



NaViSet Administrator 2™

Unified Control and Asset Management Software for NEC Desktops, Projectors and Large Screen Displays

NaViSet Administrator 2 is an all-in-one support solution compatible with a majority of NEC display devices and Windows computers. It is ideal for multidevice installations over larger infrastructures and is managed from a central location to provide monitoring, asset management and control functionality of remote displays via TCP/IP, DDC/CI or RS-232C communication.

Through an easy to use and sophisticated graphical user interface (GUI), businesses can reduce their administration effort and cut costs by remotely diagnosing, automatically monitoring and correcting technology issues with connected display devices.

Features

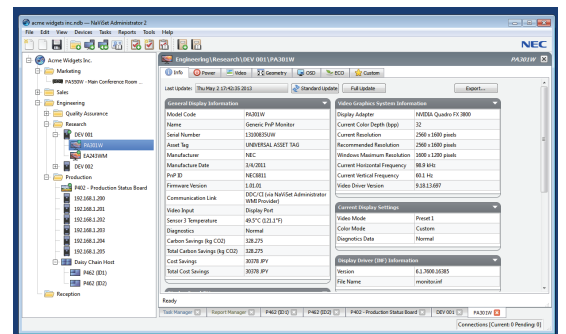
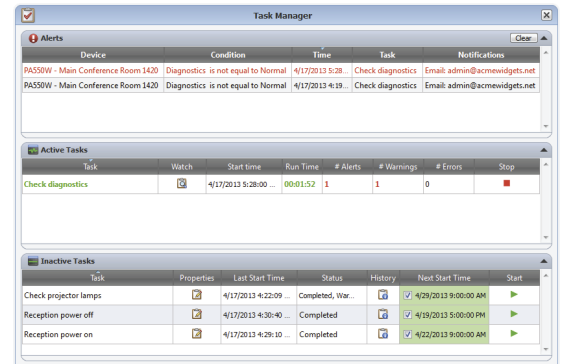
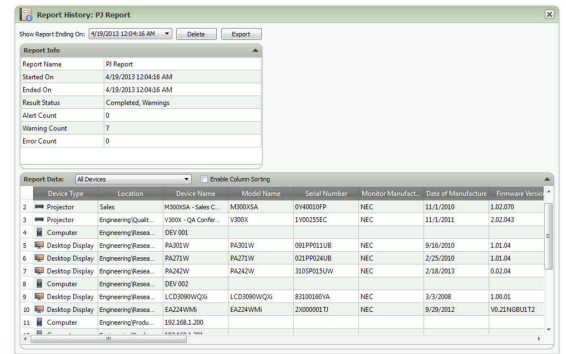
- Support the same controls found through the on screen menu for all compatible display devices such as temperature status, brightness control, IP Address, Monitor ID and Video Input.
- Poll basic or advanced information from the device at any time and export this information to the clipboard, an Excel spreadsheet or a delimited text file for later usage.
- Set a schedule to run specific tasks such as power on/off at times throughout the day or run tasks on demand such as polling internal temperatures
- Generate reports by compiling information from any connected device and manage these reports in a database within the software.
- Connect all devices to a network to create your own NEC Ecosystem.

Supported Display Devices:

- NEC desktop display models.
- NEC large-screen display models with LAN or RS232 (E Series without LAN are not supported)
- NEC projector models with a LAN or RS232 connection.
- PLink compatible devices with a LAN connection.

For FREE download of this easy-to use software, visit:

- Americas: www.sharpnecdisplays.us/navisetadministrator
- Europe, Middle East and Africa: www.sharpnecdisplays.eu/p/uk/en/products/software/details/t/Software/Displays-and-Projectors/rp/NaViSetAdmin2.xhtml



Operating System	Windows 32 or 64 bit versions: • 10 / 11 Windows Server • 2012 / 2016 / 2019 / 2022	Intel based Apple Mac with macOS version 10.13 or higher.
LAN	Standard TCP/IP LAN interface. Static IP addresses required for most displays connected directly to LAN, unless name resolution (hostname) support is provided.	
System Resources	At least 300MB available hard-disk space for installation. Approximately 100MB per 100 devices hard-disk space required for database storage. At least 4GB RAM (4GB recommended)	
Software	Adobe Reader X or higher is recommended for viewing the User's Guide. Microsoft Excel for viewing output spreadsheets (optional). "Open Hardware Monitor" (optional) for monitoring computer temperature and fan status. See Appendix C on page 146 for details.	
	Microsoft Excel or Apple Numbers for viewing output spreadsheets (optional).	