

A night-time photograph of a city skyline with several illuminated skyscrapers and a bridge over a river. The lights from the buildings and bridge are reflected in the water. A white curved line arches over the scene from the left side.

Q-SERIES FIBER OPTIC SOLUTIONS

DESIGNED TO DELIVER RELIABLE, RESILIENT,
RUGGED NETWORK PERFORMANCE.

designed to be better.™

Overview

Legrand offers the complete Building Network fiber optic solution—Q-Series. Designed to deliver reliable, resilient, rugged network performance, with a variety of connector options for maximum compatibility. Legrand's unique modular fiber solution is engineered with installation efficiency and performance in mind, providing the flexibility to design and install in any building network.

	<p>Q-Series Rack Mount Enclosures</p>	<p>M2 - Cassettes or OFP adapter panels 72 - LC connectors 216 - Fibers (12F MPO) 432 - Fibers (24F MPO) 3 - Cassettes/Adapter Panels Per RU</p>
	<p>Q-Series Wall Mount Enclosures</p>	<p>M2 - Cassettes or OFP adapter panels 72 - LC connectors 216 - Fibers (12F MPO) 432 - Fibers (24F MPO)</p>
	<p>Q-Series M2 Fiber Solutions</p>	<p>LM2 Pre-Terminated Cassettes M2 POL Solutions</p>
	<p>Q-Series OFP Adapter Panels</p>	<p>UPC / APC Duplex / Quad LC , SC, MPO OS2, OM4 Base 12 Keyed/Secure</p>
	<p>Workstation Solutions</p>	<p>HDFM Solutions, TracJack Solutions, Splice-On Connector Solutions UPC / APC Duplex / Simplex LC , SC, MPO OS2, OM4 Base 12 Keyed/Secure Wall Boxes & Face Plates</p>
	<p>Infinium Core™ Fiber Optic Solutions Infinium Cable Assembly Configurator Pre-Configured Patch Cables</p>	<p>LM2 Cassettes, Trunk, Patch Cable Solution UPC / APC Duplex / Quad LC , SC, MPO OS2, OM4 Ribbon / Single Base 12</p>

FIELD SALES ENGINEERING

FLAWLESS DEPLOYMENT OF YOUR PROJECT

There are many reasons to choose Legrand to support your critical data centers, labs, server rooms, MDF/IDF, telecommunications closets and more. Our Federal Sales team makes it easy to work with us. They are backed by an organization with:



Field Sales Engineering provides:

Design

- ✓ Detailed Planning for growth and scalability
- ✓ Layouts
- ✓ Drawings
- ✓ Situational Analysis
- ✓ RFI/RFP Review

Implementation

- ✓ Installation
- ✓ Specification Validation
- ✓ Configuration
- ✓ Specification Document Review

Support

- ✓ Warranty
- ✓ Tech Support
- ✓ Configuration Support

To engage Legrand's Field Sales Engineering team

Email: PSET@LEGRAND.US

Phone number: 1.877.717-0498

Q-Series Standard Density Rack Mount Fiber Enclosure

The Q-Series fiber enclosure system is designed to support standard density applications in building networks. The all steel chassis enables reliable protection and management of fiber optic cable patching and splicing. The enclosure also enables distribution of backbone cabling to active equipment, switching, or cross/interconnect horizontal areas. The footprint accommodates up to 72 LC fibers per RU, accepting OFP adapter panels, and M2 pre-terminated cassettes or splice cassettes.

FEATURES

- ✓ Highly Accessible: Front and rear doors, along with removable top panels, give appreciable access to the enclosure when patching and dressing cables
- ✓ Simplified Installation: The rack-mount brackets feature an open-ended ear design to allow the enclosure to rest on pre-mounted screws in the rack for a one-person installation
- ✓ Cable Knockouts: Offers rear cable knockouts for horizontal cabling entrance
- ✓ Versatile Installation: Compatible with OFP adapter panels, M2 pre-terminated cassettes and M2 splice cassettes

CAPACITY

- ✓ Max number of fibers per RU (SC) - 36
- ✓ Max number of fibers per RU (LC) - 72
- ✓ Max number of fibers per RU (12F MPO) - 288
- ✓ Max number of fibers per RU (24F MPO) - 576
- ✓ Cassette / Adapter panels per RU - 3

Q-SERIES SD RACK MOUNT FIBER ENCLOSURES

Part Number	Description
EQ01U-CHC	Q-Series 1U Standard Density (SD) Rack Mount Fiber Enclosure
EQ02U-CHC	Q-Series 2U Standard Density (SD) Rack Mount Fiber Enclosure
EQ04U-CVC	Q-Series 4U Standard Density (SD) Rack Mount Fiber Enclosure

SPLICE TRAYS

Part Number	Description
FST4-F012	Q-Series, Compact 12 Fiber Splice Tray
WQS-STB	Q-Series Compact 12 Fiber Splice Tray Mounting Bracket (Order Separately From: FST4-F012)



EQ02U-CHC

Q-Series Wall Mount Fiber Enclosure

The Q-Series Wall Mounted fiber enclosure system is designed to support standard density LAN or POL applications in building networks. The all steel chassis enables reliable protection and management of fiber optic cable patching, splicing, and connecting. The enclosure also enables distribution of backbone cabling to active equipment, switching, or cross/interconnect horizontal area. The 1 panel footprint accommodates up to 24 LC fibers, the 2 panel accommodates up to 48 LC fibers, while the 4 panel accommodates up to 96 LC fibers. Each enclosure is compatible with OFP Adapter Panels, Compact 12 Fiber Splice Trays, and LM2 Pre-terminated or M2 Splice Cassettes.

FEATURES

- ✓ Standard Density: Accepts 12 or 24 fiber LM2 pre-terminated or M2 Splice Cassettes, and OFP adapter panels
- ✓ FST4-F012C splice tray
- ✓ Low-Profile Design: Providing unobtrusive protection and management of all enclosed cabling infrastructure
- ✓ Cable Management: Protect and safely route all sensitive fibers with the included cable management system, central strength member bracket, and bend limiters
- ✓ Cable Ingress and Egress: Four ingress or egress points with rubber grommets help to protect and route all connectivity infrastructure

Q-SERIES WALL MOUNT FIBER ENCLOSURES

Part Number	Description
WQS-01P	Q-Series 1 Panel Standard Density (SD) Wall Mount Fiber Enclosure
WQS-02P	Q-Series 2 Panel Standard Density (SD) Wall Mount Fiber Enclosure
WQS-04P	Q-Series 4 Panel Standard Density (SD) Wall Mount Fiber Enclosure

SPLICE TRAYS

Part Number	Description
FST4-F012	Q-Series, Compact 12 Fiber Splice Tray
WQS-STB	Q-Series Compact 12 Fiber Splice Tray Mounting Bracket (Order Separately From: FST4-F012)



WQS-01P



WQS-04P

Q-Series M2 Fiber Solutions

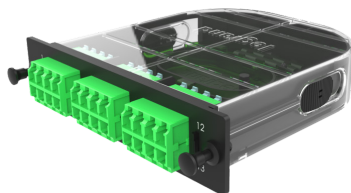
M2 SPLICE CASSETTES

M2 Splice Cassettes enable fast, field termination and provide cable management within the housing. The M2 Splice Cassette is designed for use with Single-Mode or Multimode fiber, houses 12 or 24 fibers, and provides Duplex or Quad, UPC or APC LC ports. These cassettes support fusion splicing of individual or ribbon fibers, with heat shrinks, pigtail slack and cable slack managed within the cassette. This eliminates the need for individual splice trays or housings, as well as allowing splicing to be done away from the rack housing in a suitable workspace as needed.

M2 SPLICE CASSETTES

Part Number	Connector Type	Connector Polish	Fiber Type	Fiber Count	Performance	Insertion Loss (Max)	Return Loss (Max)	Splice Type
M2LCD12-091A1R	LC Duplex	UPC	OS2	12	Infinium Core	0.40 dB	52 dB	Ribbon Fiber
M2LCD12-091A1S	LC Duplex	UPC	OS2	12	Infinium Core	0.35 dB	52 dB	Single Fiber
M2LCQ24-091A1R	LC Quad	UPC	OS2	24	Infinium Core	0.35 dB	52 dB	Ribbon Fiber
M2LCQ24-091A1S	LC Quad	UPC	OS2	12	Infinium Core	0.35 dB	52 dB	Single Fiber
M2LCD12-09A1A1R	LC Duplex	APC	OS2	12	Infinium Core	0.40 dB	52 dB	Ribbon Fiber
M2LCD12-09A1A1S	LC Duplex	APC	OS2	12	Infinium Core	0.35 dB	54.6 dB	Single Fiber
M2LCQ24-09A1A1R	LC Quad	APC	OS2	24	Infinium Core	0.40 dB	54.6 dB	Ribbon Fiber
M2LCQ24-09A1A1S	LC Quad	APC	OS2	24	Infinium Core	0.35 dB	52 dB	Single Fiber
M2LCD12-50E1A1R	LC Duplex	PC	OM4	12	Infinium Core	0.60 dB	19 dB	Ribbon Fiber
M2LCQ24-50E1A1S	LC Quad	PC	OM4	24	Infinium Core	0.55 dB	19 dB	Single Fiber
M2SCD12-091A1R	SC Duplex	UPC	OS2	12	Infinium Core	0.40 dB	52 dB	Ribbon Fiber
M2SCD12-091A1S	SC Duplex	UPC	OS2	12	Infinium Core	0.35 dB	52 dB	Single Fiber
M2SCD12-09A1A1R	SC Duplex	APC	OS2	12	Infinium Core	0.40 dB	52 dB	Ribbon Fiber
M2SCD12-09A1A1S	SC Duplex	APC	OS2	12	Infinium Core	0.35 dB	54.6 dB	Ribbon Fiber
M2SCD12-50E1A1R	SC Duplex	PC	OM4	12	Infinium Core	0.60 dB	19 dB	Single Fiber

Note: Single-Mode = (OS2) & Multimode = (OM4)



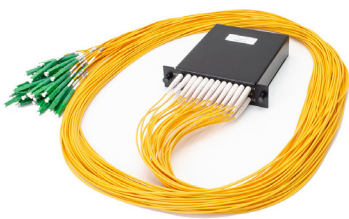
M2LCQ24-09A1A1R

M2 PASSIVE OPTICAL LAN SPLITTERS

A Passive Optical LAN (POL) Splitter is used in place of a workgroup switch, optimizing resources with a simple, space-saving installation that provides benefits such as cost reductions, greater efficiencies, scalability, and a clear upgrade path.

M2 PASSIVE OPTICAL LAN SPLITTERS

Part Number	Description
M2S1108LA092M	M2 1x8 POL Splitter, LC/APC Connectors, 2m Pigtailed
M2S1116LA092M	M2 1x16 POL Splitter, LC/APC Connectors, 2m Pigtailed
M2S1132LA092M	M2 1x32 POL Splitter, LC/APC Connectors, 2m Pigtailed
M2S2108LA092M	M2 2x8 POL Splitter, LC/APC Connectors, 2m Pigtailed
M2S2116LA092M	M2 2x16 POL Splitter, LC/APC Connectors, 2m Pigtailed
M2S2132LA092M	M2 2x32 POL Splitter, LC/APC Connectors, 2m Pigtailed
M2S1108SA092M	M2 1x8 POL Splitter, SC/APC Connectors, 2m Pigtailed
M2S1116SA092M	M2 1x16 POL Splitter, SC/APC Connectors, 2m Pigtailed
M2S1132SA092M	M2 1x32 POL Splitter, SC/APC Connectors, 2m Pigtailed
M2S2108SA092M	M2 2x8 POL Splitter, SC/APC Connectors, 2m Pigtailed
M2S2116SA092M	M2 2x16 POL Splitter, SC/APC Connectors, 2m Pigtailed
M2S2132SA092M	M2 2x32 POL Splitter, SC/APC Connectors, 2m Pigtailed
M2S1216SA092M	M2 Dual 1x16 POL Splitter, SC/APC Connectors, 2m Pigtailed



M2S2132LA092M

Adapters Panels

OFP ADAPTER PANELS

The OFP fiber adapter panels were designed to easily install into any Q-Series rack mount or wall mount enclosures or panels. Each adapter is pre-loaded with a feed-through mating sleeve that serves as the intermediate connection between the backbone and your patch cable. Simply select your connector type, then plug-and-play.

OFP ADAPTER PANELS

Part Number	Connector Style	Fiber Type	Fiber Count	Color
OFP-BLANK	NA	NA	NA	BLACK
OFP-LCD08AC	LC	OS2	8	BLUE
OFP-LCD08LC	LC	OM3/OM4	8	AQUA
OFP-LCD12AC	LC	OS2	12	BLUE
OFP-LCD12CC	LC APC	OS2	12	GREEN
OFP-LCD12MB	LC	OM1	12	BEIGE
OFP-LCD12LC	LC	OM3/OM4	12	AQUA
OFP-LCD12BC	LC	ALL	12	ORANGE
OFP-LCD12GC	LC	ALL	12	RED
OFP-LCD12IC	LC	ALL	12	YELLOW
OFP-LCD12PC	LC	ALL	12	DARK GREEN
OFP-LCQ16AC	LC	OS2	16	BLUE
OFP-LCQ16LC	LC	OM3/OM4	16	AQUA
OFP-LCQ24AC	LC	OS2	24	BLUE
OFP-LCQ24CC	LC APC	OS2	24	GREEN
OFP-LCQ24MB	LC	OM1	24	BEIGE
OFP-LCQ24LC	LC	OM3/OM4	24	AQUA
OFP-LCQ24GC	LC	ALL	24	RED
OFP-LCQ24IC	LC	ALL	24	YELLOW
OFP-LCQ24JC	LC	ALL	24	VIOLET
OFP-LCQ24PC	LC	ALL	24	DARK GREEN
OFP-SCD06AC	SC	OS2	6	BLUE
OFP-SCD06CC	SC APC	OS2	6	GREEN
OFP-SCS06AC	SC	OS2	6	BLUE
OFP-SCS06CC	SC APC	OS2	6	GREEN
OFP-SCS06MB	SC	OM1	6	BEIGE
OFP-SCD06MB	SC	OM1	6	BEIGE
OFP-SCS06LC	SC	OM3/OM4	6	AQUA
OFP-SCD06LC	SC	OM3/OM4	6	AQUA
OFP-SCD08AC	SC	OS2	8	BLUE
OFP-SCD08MB	SC	OM1	8	BEIGE
OFP-SCD08LC	SC	OM3/OM4	8	AQUA
OFP-SCD12AC	SC	OS2	12	BLUE
OFP-SCD12CC	SC APC	OS2	12	GREEN
OFP-SCD12MB	SC	OM1	12	BEIGE
OFP-SCD12LC	SC	OM3/OM4	12	AQUA
OFP-STD08AC	ST	OS2	8	BLUE
OFP-STD08MB	ST	OM1	8	BEIGE
OFP-STD08LC	ST	OM3/OM4	8	AQUA
OFP-STD12AC	ST	OS2	12	BLUE
OFP-STD12MB	ST	OM1	12	BEIGE
OFP-STD12LC	ST	OM3/OM4	12	AQUA
OFP-MPA72CA	MPO	OS2	72	GREEN
OFP-MPA72MA	MPO	OM1	72	BEIGE
OFP-MPA72LA	MPO	OM3/OM4	72	AQUA
OFP-MPA96CA	MPO	OS2	96	GREEN
OFP-MPA96MA	MPO	OM1	96	BEIGE
OFP-MPA96LA	MPO	OM3/OM4	96	AQUA

KEYED OFF ADAPTER PANELS

For critical networks – the security and integrity of your information simply cannot be compromised. To build a secure network that protects sensitive data and classified information, you need a cabling solution that will help protect computer systems and networks from outside intrusion and internal abuse. Legrand Keyed LC Fiber Solutions do just that, by preventing inadvertent or unauthorized access to optical fiber network ports.

Legrand keyed LC fiber solutions provide a simple and convenient way to physically prevent the user from making an unauthorized connection by blocking access to specific optical ports, whether they are at a workstation outlet or in a telecommunications room or data center. This is particularly important for government, finance, military and other facilities where multiple networks having different security level access requirements may be co-located.

FEATURES & BENEFITS

- ✓ Up to thirteen unique keying options/colors for a wide range of network security systems, easy identification and network management.
- ✓ Keyed workstation adapter modules are available for TracJack® and High Density Jack (HDJ) style Face plates and surface mount boxes for complete system design flexibility.
- ✓ Keyed LC adapters have the option to be keyed in the front only (user's side) or on both sides (user's and technician's) depending on the security requirements.
- ✓ All Legrand keyed LC fiber products are engineered to be compatible with other Legrand products to provide an end to end, data center to desktop solution.

Legrand keyed LC solutions provide physical separation of multiple networks for high security applications. Color-coded keys allow easy identification and facilitate network administration.

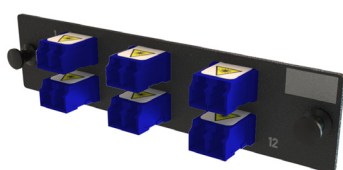
Q-SERIES, KEYED FRONT KEYED REAR, OFF ADAPTERS

Part Number	Description
OFP-LCD12ZC-x	Q-Series Keyed Front Keyed Rear OFP Adapter Panel, 6 LC Duplex Adapters, 12 Fibers
OFP-LCD16ZC-x	Q-Series Keyed Front Keyed Rear OFP Adapter Panel, 8 LC Duplex Adapters, 16 Fibers
OFP-LCD24ZC-x	Q-Series Keyed Front Keyed Rear OFP Adapter Panel, 12 LC Duplex Adapters, 24 Fibers

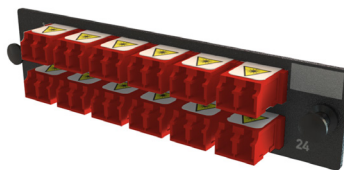
Q-SERIES, KEYED FRONT NON-KEYED REAR, OFF ADAPTERS

Part Number	Description
OFP-LCD12YC-x	Q-Series Keyed Front Non-Keyed Rear OFP Adapter Panel, 6 LC Duplex Adapters, 12 Fibers
OFP-LCD16YC-x	Q-Series Keyed Front Non-Keyed Rear OFP Adapter Panel, 8 LC Duplex Adapters, 16 Fibers
OFP-LCD24YC-x	Q-Series Keyed Front Non-Keyed Rear OFP Adapter Panel, 12 LC Duplex Adapters, 24 Fibers

x in the Part number indicates color/key configuration 'x' = A (Rose), B (White), C (Yellow), D (Red), E (Orange), F (Violet), G (Gray), H (Blue), J (Brown), K (Aqua), L (Magenta), M (Green), U (Black)



OFP-LCD12ZC-H



OFP-LCD24ZC-D

Work Station Solutions

INFINIUM HDFM ADAPTERS

HDFM modular adapter panels enable multimedia connectivity and create a quality solution for your unique workstation installation requirements.

INFINIUM HDFM ADAPTERS

Part Number	Connector Style	Fiber Type	Fiber Count	Color	Pack Count
HDFM-FLC2CA-00	LC	OS2	2	BLUE	1
HDFM25FLC2CA-00	LC	OS2	2	BLUE	25
HDFM-FLC2CC-00	LC APC	OS2	2	GREEN	1
HDFM25FLC2CC-00	LC APC	OS2	2	GREEN	25
HDFM-FLC2CM-00	LC	OM1	2	BEIGE	1
HDFM-FLC2CL-00	LC	OM3/OM4	2	AQUA	1
HDFM25FLC2CL-00	LC	OM3/OM4	2	AQUA	25
HDFM-FLC2CB-00	LC	ALL	2	ORANGE	1
HDFM25FLC2CB-00	LC	ALL	2	ORANGE	25
HDFM-FLC2CF-00	LC	ALL	2	WHITE	1
HDFM25FLC2CF-00	LC	ALL	2	WHITE	25
HDFM-FLC2CG-00	LC	ALL	2	RED	1
HDFM25FLC2CG-00	LC	ALL	2	RED	25
HDFM-FLC2CH-00	LC	ALL	2	BLACK	1
HDFM25FLC2CH-00	LC	ALL	2	BLACK	25
HDFM-FLC2CI-00	LC	ALL	2	YELLOW	1
HDFM25FLC2CI-00	LC	ALL	2	YELLOW	25
HDFM-FSC1CA-00	SC	OS2	1	BLUE	1
HDFM-FSC1CC-00	SC APC	OS2	1	GREEN	1
HDFM-FSC1CM-00	SC	OM1	1	BEIGE	1
HDFM-FSC1CL-00	SC	OM3/OM4	1	AQUA	1
HDFM-FSC1CG-00	SC	ALL	1	RED	1
HDFM-FSC1CI-00	SC	ALL	1	YELLOW	1
HDFM-FMTZNA-00	MPO	OS2	12	BLUE	1
HDFM25FMTZNA-00	MPO	OS2	12	BLUE	25
HDFM-FMTZNC-00	MPO	OS2	12	GREEN	1
HDFM-FMTZNM-00	MPO	OM1	12	BEIGE	1
HDFM-FMTZNL-00	MPO	OM3/OM4	12	AQUA	1
HDFM-FMTZNN-00	MPO	OM4+	12	VIOLET	1



HDFM-FLC2CA-00

INFINIUM, KEYED FRONT KEYED REAR, HDFM ADAPTERS

Legrand keyed LC fiber solutions provide a simple and convenient way to physically prevent the user from making an unauthorized connection by blocking access to specific optical ports, whether they are at a workstation outlet or in a telecommunications room or data center. This is particularly important for government, finance, military and other facilities where multiple networks having different security level access requirements may be co-located.

FEATURES & BENEFITS

- ✓ Up to thirteen unique keying options/colors for a wide range of network security systems, easy identification and network management.
- ✓ Keyed workstation adapter modules are available for High Density Jack (HDJ) style Face plates and surface mount boxes for complete system design flexibility.
- ✓ Keyed LC adapters have the option to be keyed in the front only (user's side) or on both sides (user's and technician's) depending on the security requirements.
- ✓ All Legrand keyed LC fiber products are engineered to be compatible with other Legrand products to provide an end to end, data center to desktop solution.

Legrand keyed LC solutions provide physical separation of multiple networks for high security applications.

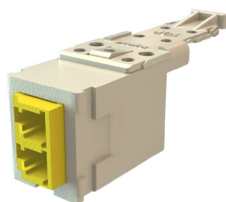
INFINIUM, KEYED FRONT KEYED REAR, HDFM ADAPTERS

Part Number	Description
HDFM-KLC2Cx-00	Infinium HD Fiber Module, Keyed Front Keyed Rear LC Duplex (2 Fibers), HDJ Insert, Black Housing
HDFM-KLC2Cx	Infinium HD Fiber Module, Keyed Front Keyed Rear LC Duplex (2Fibers),HDJ Insert, Fog White Housing

INFINIUM, KEYED FRONT NON-KEYED REAR, HDFM ADAPTERS

Part Number	Description
HDFM-HLC2Cx-00	Infinium HD Fiber Module, Keyed Front Non-Keyed Rear LC Duplex (2 Fibers), HDJ Insert, Black Housing
HDFM-HLC2Cx	Infinium HD Fiber Module, Keyed Front Non-Keyed Rear LC Duplex (2Fibers),HDJ Insert, Fog White Housing

x in the Part number indicates color/key configuration 'x' = A (Rose), B (White), C (Yellow), D (Red), E (Orange), F (Violet), G (Gray), H (Blue), J (Brown), K (Aqua), L (Magenta), M (Green), U (Black)



HDFM-HLC2CC

HDFM / HDJ WORKSTATION FACE PLATES

Faceplates accept HDFM/HDJ series jack modules.

Part Number	Description
403HDJ11	1-Port Face Plate, HDJ Jack, Single-Gang
403HDJ12	2-Port Face Plate, HDJ Jack, Single-Gang
403HDJ13	3-Port Face Plate, HDJ Jack, Single-Gang
403HDJ14	4-Port Face Plate, HDJ Jack, Single-Gang
403HDJ16	6-Port Face Plate, HDJ Jack, Single-Gang
403HDJ212	12-Port Face Plate, HDJ Jack, Dual-Gang



403HDJ14-88

HDFM / HDJ WORKSTATION PLASTIC SURFACE MOUNT BOXES

Compatible with HDJ/HDFM series jacks.

Part Number	Description
404-HDJ1-XX	1-Port HDJ Plastic Surface Mount Box, Plenum Rated
404HDJ2-XX	2-Port HDJ Plastic Surface Mount Box, Plenum Rated
404HDJ4-99	4-Port HDJ Plastic Surface Mount Box, Ivory
404HDJ4	4-Port HDJ Plastic Surface Mount Box, Fog White



404HDJ2

Note: Includes snap-in label fields. Standard color is Fog White. Replace -XX with -88 for White

TRACJACK WORKSTATION INSERTS

TracJackR footprint is front loading and supports a number of A/V and data modules. It's ideal for combining A/V with our high performance Clarity workstation products. The TracJack footprint can also be used with Series IIR through the use of an adapter bezel.

Part Number	Description
42100002-XX	TracJack Blank, 10 pack
63700011-XX	TracJack, ST, MTL
63700012-XX	TracJack, ST, CER, SM
63700013-XX	TracJack, 2/ST, MTL
63700017-XX	TracJack, SC, DX, Beige Adapter
63700026-XX	TracJack, MT-RJ, Beige Adapter
63700039-XX	TracJack, LC, DX, Beige Adapter
63700051-XX	TracJack, SC, DX, Beige Adapter
63700066-XX	TracJack, SC, DX
63700067-XX	TracJack, SC, DX, Ceramic
63700080-XX	TracJack, LC, DX, Aqua Adapter
63700081-XX	TracJack, SC, DX, Aqua Adapter
63700082-XX	TracJack, SC, DX, Aqua Adapter



63700039

NOTE: Remove -XX for Fog White, for other colors replace XX with 00 (Black), 13 (Electric Ivory), 78 (Dark Gray), 88 (White), 99 (Wiremold Ivory)

KEYED TRACJACK KTJ ADAPTERS - FOR KTJ PLATFORMS

Legrand keyed LC fiber solutions provide a simple and convenient way to physically prevent the user from making an unauthorized connection by blocking access to specific optical ports, whether they are at a workstation outlet or in a telecommunications room or data center. This is particularly important for government, finance, military and other facilities where multiple networks having different security level access requirements may be co-located.

FEATURES & BENEFITS

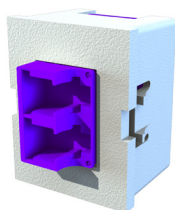
- ✓ Up to thirteen unique keying options/colors for a wide range of network security systems, easy identification and network management.
- ✓ Keyed workstation adapter modules are available for TracJack style Face plates and surface mount boxes for complete system design flexibility.
- ✓ Keyed LC adapters have the option to be keyed in the front only (user's side) or on both sides (user's and technician's) depending on the security requirements.
- ✓ All Legrand keyed LC fiber products are engineered to be compatible with other Legrand products to provide an end to end, data center to desktop solution.

Legrand keyed LC solutions provide physical separation of multiple networks for high security applications.

INFINIUM, KEYED FRONT KEYED REAR, HDFM ADAPTERS

Part Number	Description
KTJ-2FALC2CX	TracJack Module, Keyed Front Keyed Rear LC Duplex (2 Fibers), Multimode Adapters, 180 Degree Exit, Flush Mount
KTJ-2ACL2CX	TracJack Module, Keyed Front Keyed Rear LC Duplex (2 Fibers) Multimode Adapters, 45 Degree Angled Exit
KTJ-1FALC2CX	TracJack Module, Keyed Front Non-Keyed Rear LC Duplex (2 Fibers), Multimode Adapters, 180 Degree Exit, Flush Mount
KTJ-1ACL2CX	TracJack Module, Keyed Front Non-Keyed Rear LC Duplex (2 Fibers) Multimode Adapters, 45 Degree Angled Exit

NOTE: Keyed Splice-On Connectors are not available in Black (suffix U)
 For all Keyed LC Products – To choose colors replace X with the color suffix from the chart below.



KTJ-2FALC2CF

TRACJACK PLASTIC FACEPLATES

Faceplates accept TracJack series jacks with label fields and front loading TracJack modules.

Part Number	Description
40300545-XX	6-Port TracJack Single-Gang Plastic Faceplate
40300546-XX	4-Port TracJack Single-Gang Plastic Faceplate
40300547-XX	3-Port TracJack Single-Gang Plastic Faceplate
40300548-XX	2-Port TracJack Single-Gang Plastic Faceplate
40300549-XX	1-Port TracJack Single-Gang Plastic Faceplate
40300554-XX	8-Port TracJack Dual-Gang Plastic Faceplate
40300555-XX *	6-Port TracJack Dual-Gang Plastic Faceplate
40300620-XX	12-Port TracJack Dual-Gang Plastic Faceplate

NOTE: Remove -XX for Fog White, for other colors replace XX with 00 (Black), 13 (Electric Ivory), 88 (White)
*Also available in 99 (Wiremold Ivory)



40300546

TRACJACK STAINLESS STEEL FACEPLATES

Faceplates accept TracJack series jacks and front loading TracJack modules.

Part Number	Description
403STJ11	1-Port TracJack Single-Gang Stainless Steel Faceplate
403STJ12	2-Port TracJack Single-Gang Stainless Steel Faceplate
403STJ13	3-Port TracJack Single-Gang Stainless Steel Faceplate
403STJ14	4-Port TracJack Single-Gang Stainless Steel Faceplate
403STJ16	6-Port TracJack Single-Gang Stainless Steel Faceplate
403STJ28	8-Port TracJack Single-Gang Stainless Steel Faceplate
403STJ212	12-Port TracJack Double-Gang Stainless Steel Faceplate
403STJ1WP	Wall Phone TJ Stainless Steel Faceplate



403STJ12

TRACJACK WORKSTATION SURFACE MOUNT

Compatible with TracJack series jacks. Product dimensions are listed by length, width and height.

Part Number	Description
404TJ1-XX	1-Port TracJack, Plenum Rated
404TJ2-XX	2-Port TracJacks, 2.59" x 2.27" x 1.20", Plenum Rated
404TJ2X2-XX	4-Port TracJacks, 4.0" x 2.42" x 1.16", Jacks Exit from Both Sides
404TJ4-XX	4-Port TracJacks, 4.80" X 3.6" X 1.16"
404TJ6-XX	6-Port TracJacks, 7" X 4.5" X 1.16"



404TJ2

NOTE: Remove -XX for Fog White, for other colors replace XX with 00 (Black), 13 (Electric Ivory), 88 (White)

TRACJACK WORKSTATION BEZELS

LegrandR offers TracJackR plates for most furniture systems. Plates easily snap mount into furniture, requiring no special tools. Plates are ruggedly constructed from high impact thermo-plastic 94V-0 rated.

Part Number	Description
40300575-XX	6-Port for Opening Size of 1.89" x 2.99" (+0.015) for 0.063" Thick Material
40300633-XX	4-Port for Opening of 2.67-2.75" x 1.34-1.41" for 0.065" Thick Material
40800017-XX	106 Baseplate, Holds (2) TracJacks
40800019-XX	106 Baseplate, Holds (4) TracJacks
41900017-XX	Stylistic TracJack Frame, Single gang 3-Port cover, 2.75" x 4.5"
41900018-XX*	Stylistic TracJack Frame, Single gang 4-Port cover, 4.5" x 4.5"
42100009-XX	3-Port Adapter Plate, Front Loadable
42100054-XX	3-Port Adapter Plate, Rear Loadable, 5 pack
421TJ3.5-XX	3-Port Furniture Plate



40300575

NOTE: Remove -XX for Fog White, for other colors replace XX with 00 (Black), 13 (Electric Ivory), 88 (White)

Q-SERIES ANAEROBIC CONNECTORS

The anaerobic curing method for the Q-Series field terminating anaerobic connectors require no capital equipment, curing ovens, UV light sources, or expensive polishing machines. Terminate anywhere without worrying about power sources or charging batteries. The connectors feature a simple design allowing for lower unit costs, while advanced engineering helps ensure long life and saves on replacement costs.

INFINIUM HDFM ADAPTERS

Part Number	Style	Fiber Type	Jacket Size	Housing Color	Boot Color	Pack Count	Compliance
205KAN9GA-MM	LC	Multimode	900um	Beige	White	1	TAA, BAA
205KAN9FA-MM	SC	Multimode	900um	Beige	White	1	TAA, BAA
205KAN9EA-MM	ST	Multimode	900um	Metallic	Gray	1	TAA, BAA
205KAN9GA-SM	LC	Single-Mode	900um	Blue	White	1	TAA, BAA
205KAN9FA-SM	SC	Single-Mode	900um	Blue	White	1	TAA, BAA
205KAN9EA-SM	ST	Single-Mode	900um	Metallic	White	1	TAA, BAA

ACCESSORIES FOR Q-SERIES ANAEROBIC CONNECTORS

Part Number	Description
85400010	Q-Series Anaerobic Termination Kit for ST, SC, LC



205KAN9GA-SM

Infinium Core™ Fiber Solutions

Simplified Low Loss System – Infinium Core cassettes mix performance, simplified deployment and simplified ordering. The Infinium Core fiber optic pre-terminated cassette provides the fastest method of structured cabling deployment: plug it in and you're ready to go. Factory terminated and tested to guarantee low loss field performance when paired with Infinium Core fiber patch cords and trunks.

FEATURES & BENEFITS

- ✓ Low Loss System: When combined with Infinium Core Trunks and Infinium Core Patch Cords Single-mode total channel connection loss: 2.1 dB
- ✓ Single-mode total channel connection return loss: 49 dB
- ✓ Multimode total channel connection loss: 2.5 dB
- ✓ Multimode total channel connection return loss: 19 dB
- ✓ High Density: 12 or 24-fiber cassette compatible with Infinium HD M4 Enclosures
- ✓ Versatile Installation: Infinium HDJ Modular Panel enables mixed media installations
- ✓ Standard Density: 12-fiber cassette compatible with Q-Series M2 Enclosures
- ✓ Fiber Type: Supports either Single-mode OS2 or Multimode Infinium Core fiber
- ✓ Polarization: Universal

Item Number	Connector Style (Front-to-Rear)	Fiber Type	Fiber Count	Tier Level	Total Insertion Loss (Max)	Front Insertion Loss (Max)	Rear Insertion Loss (Max)	Return Loss (Min)	Polarity
LM4-LC12H-1A1UN	LC PC - MPO (M) PC	OM4	12	Core	1.25dB	0.50dB	0.75dB	19dB	Universal
LM4-LC24H-2A1UN	LC PC - MPO (M) PC	OM4	24	Core	1.25dB	0.50dB	0.75dB	19dB	Universal
LM4-LC24H-3C1UN	LC PC - 3 MPO(F) PC	OM4	24	Core	1.25dB	0.50dB	0.75dB	19dB	Universal
LM4-LC12J	LC UPC - MPO (M) APC	OS2	12	Core	1.05dB	0.30dB	0.75dB	52dB	Universal
LM4-LC24J	LC UPC - MPO (M) APC	OS2	24	Core	1.05dB	0.30dB	0.75dB	52dB	Universal
LM4-LC24J-3C1UN	LC UPC - 3 MPO(F) APC	OS2	24	Core	1.05dB	0.30dB	0.75dB	52dB	Universal
LM4-LA24J-3C1UN	LC APC - 3 MPO(F) APC	OS2	24	Core	1.15dB	0.40dB	0.75dB	54.6dB	Universal



FIBER TRUNK ASSEMBLY CONFIGURATOR

Performance Level	Connector	Connector	Polarity	Cable Type	Cable Vendor	Fiber Count	Fiber Type	Breakout A	Breakout B	Options	Length	Unit of Measure	Concatenated Part Number
PN# C -	47	47	B	10	S	7	E	M	M	2	125	F	C4747B10S7EMM2125F

Performance Level C - CORE U - ULTRA Q - QUANTUM	Connectors (MTP) 47 - MM Core/Ultra 63 - SM Core/Ultra 1E - MM Quantum 71 - SM Quantum	Connectors (MTP PRO) 84 - MM Quantum 86 - SM Quantum	Polarity (Standard) B - Universal
Cable Type 10 - (Above 12 F) 3.0mm Micro Distribution OFNP 37- 3.0mm OFNP 12F 67 - Micro Dist Interconnect 3.0mm LSZH 12F, CCA 68 - Micro Distribution LSZH 2.0mm, CCA	Cable Vendor S - SPSX	Fiber Count 7 - 12F H - 72F A - 24F N - 144F E - 48F	Polarity (Optional) A - A:1-1
Unit of Measure F - Feet	Breakout A M - MTP No Stagger	Options 0 - None 1 - Spool 2 - Spool & Pulling Eye on A	Fiber Type E - MM J - SM O - SM Quantum
Length xxx - How Long Unit of Measure F -Feet	Breakout B M - MTP No Stagger		

PATCH CABLE ASSEMBLY CONFIGURATOR

Performance Level	Connector	Connector	Polarity	Cable Diameter	Fiber Type	Jacket Color	Jacket Type	Packaging	Length	Unit of Measure	Concatenated Part Number
PN# L1 -	71	71	B	10	S	7	O	M	M	1	L1-0101B2OY21010F

Performance Level L1 - CORE L3 - ULTRA L4 - QUANTUM	Connectors 01 - LC 02 - SC 35 - SM Quantum LC	Polarity B - A-B (Clipped) Standard A - A-A (Clipped) N - Non-Clipped	Cable Diameter 2 - 2.0mm 3 - 3.0mm
Fiber Type E - OM4 D - OM3 J - OS2 Standard O - OS2 Quantum	Jacket Color A - Aqua Y - Yellow	Jacket Type 2 - Riser Duplex D - Plenum Duplex 1 - Riser Simplex S -Plenum Simplex E - LSZH Duplex Zip	Packaging 0 - Bag, NO Test Results 1 - Bag, Test Results
Unit of Measure F - Feet M - Meters			

INSTRUCTIONS

Use the applicable feature tables, select the appropriate designation code and apply to the coordinating cell in the configurator. Please Note: With hundreds of configuration options, this table has been condensed to the most common choices to simplify the trunk assembly configuration process. If you require other configuration options or assistance with designing the appropriate trunk for your application, please contact Legrand support.

1.800.934.5432 | customerservice.DAT@legrand.us

Pre-Configured Infinium Core Single-Mode Patch Cable Assemblies

INDIVIDUAL PATCH CABLE ASSEMBLY - LOW INSERTION LOSS: 0.30 dB Insertion loss

Part of a Low Loss System: When combined with Infinium Core Trunks and Infinium Core Cassettes

- ✓ Single-mode total channel connection loss: 2.1 dB
- ✓ Single-mode total channel connection return loss: 49 dB

Cable Size: All configurations below are 2mm - other configuration options available

Fiber Type: Supports Single-mode OS2 Infinium Core fiber

Polarization: A-B and is designed to pair with Infinium Core Universal Polarity Cassettes

Jacket Color: Yellow - other configuration options available

Compliance: BAA and TAA

Part Number	Description	Fiber Type	Polarity	Form Factor	Jacket Type	Length	Unit of Measure
L1-0101B2JYD0002F	Infinium Core, LC to LC	OS2	A-B	Duplex	Plenum	2	Feet
L1-0101B2JYD0003F	Infinium Core, LC to LC	OS2	A-B	Duplex	Plenum	3	Feet
L1-0101B2JYD0004F	Infinium Core, LC to LC	OS2	A-B	Duplex	Plenum	4	Feet
L1-0101B2JYD0005F	Infinium Core, LC to LC	OS2	A-B	Duplex	Plenum	5	Feet
L1-0101B2JYD0010F	Infinium Core, LC to LC	OS2	A-B	Duplex	Plenum	10	Feet
L1-0101B2JYD0015F	Infinium Core, LC to LC	OS2	A-B	Duplex	Plenum	15	Feet
L1-0102B2JYD0001F	Infinium Core, LC to SC	OS2	A-B	Duplex	Plenum	1	Feet
L1-0102B2JYD0002F	Infinium Core, LC to SC	OS2	A-B	Duplex	Plenum	2	Feet
L1-0102B2JYD0003F	Infinium Core, LC to SC	OS2	A-B	Duplex	Plenum	3	Feet
L1-0101B2JYD0001M	Infinium Core, LC to LC	OS2	A-B	Duplex	Plenum	1	Meters
L1-0101B2JYD0002M	Infinium Core, LC to LC	OS2	A-B	Duplex	Plenum	2	Meters
L1-0101B2JYD0003M	Infinium Core, LC to LC	OS2	A-B	Duplex	Plenum	3	Meters
L1-0101B2JYD0004M	Infinium Core, LC to LC	OS2	A-B	Duplex	Plenum	4	Meters
L1-0101B2JYD0005M	Infinium Core, LC to LC	OS2	A-B	Duplex	Plenum	5	Meters
L1-0101B2JYD0010M	Infinium Core, LC to LC	OS2	A-B	Duplex	Plenum	10	Meters
L1-0102B2JYD0001M	Infinium Core, LC to SC	OS2	A-B	Duplex	Plenum	1	Meters
L1-0102B2JYD0002M	Infinium Core, LC to SC	OS2	A-B	Duplex	Plenum	2	Meters
L1-0102B2JYD0003M	Infinium Core, LC to SC	OS2	A-B	Duplex	Plenum	3	Meters
L1-0101B2JY20002F	Infinium Core, LC to LC	OS2	A-B	Duplex	Riser	2	Feet
L1-0101B2JY20003F	Infinium Core, LC to LC	OS2	A-B	Duplex	Riser	3	Feet
L1-0101B2JY20004F	Infinium Core, LC to LC	OS2	A-B	Duplex	Riser	4	Feet
L1-0101B2JY20005F	Infinium Core, LC to LC	OS2	A-B	Duplex	Riser	5	Feet
L1-0101B2JY20010F	Infinium Core, LC to LC	OS2	A-B	Duplex	Riser	10	Feet
L1-0101B2JY20015F	Infinium Core, LC to LC	OS2	A-B	Duplex	Riser	15	Feet
L1-0102B2JY20001F	Infinium Core, LC to SC	OS2	A-B	Duplex	Riser	1	Feet
L1-0102B2JY20002F	Infinium Core, LC to SC	OS2	A-B	Duplex	Riser	2	Feet
L1-0102B2JY20003F	Infinium Core, LC to SC	OS2	A-B	Duplex	Riser	3	Feet
L1-0101B2JY20001M	Infinium Core, LC to LC	OS2	A-B	Duplex	Riser	1	Meters
L1-0101B2JY20002M	Infinium Core, LC to LC	OS2	A-B	Duplex	Riser	2	Meters
L1-0101B2JY20003M	Infinium Core, LC to LC	OS2	A-B	Duplex	Riser	3	Meters
L1-0101B2JY20004M	Infinium Core, LC to LC	OS2	A-B	Duplex	Riser	4	Meters
L1-0101B2JY20005M	Infinium Core, LC to LC	OS2	A-B	Duplex	Riser	5	Meters
L1-0101B2JY20010M	Infinium Core, LC to LC	OS2	A-B	Duplex	Riser	10	Meters
L1-0102B2JY20001M	Infinium Core, LC to SC	OS2	A-B	Duplex	Riser	1	Meters
L1-0102B2JY20002M	Infinium Core, LC to SC	OS2	A-B	Duplex	Riser	2	Meters
L1-0102B2JY20003M	Infinium Core, LC to SC	OS2	A-B	Duplex	Riser	3	Meters

Pre-Configured Infinium Core Multimode Patch Cable Assemblies

INDIVIDUAL PATCH CABLE ASSEMBLY - LOW INSERTION LOSS: 0.30 dB Insertion loss

Part of a Low Loss System: When combined with Infinium Core Trunks and Infinium Core Cassettes

- ✓ Multimode total channel connection loss: 2.5 dB
- ✓ Multimode total channel connection return loss: 19 dB

Cable Size: All configurations below are 2mm - other configuration options available

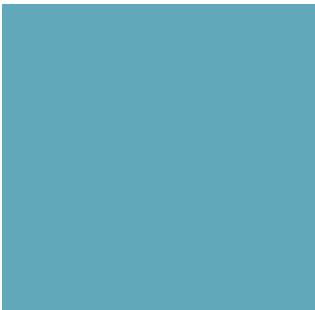
Fiber Type: Supports Multimode OM4 Infinium Core fiber

Polarization: A-B and is designed to pair with Infinium Core Universal Polarity Cassettes

Jacket Color: Aqua - other configuration options available

Compliance: BAA and TAA

Part Number	Description	Fiber Type	Polarity	Form Factor	Jacket Type	Length	Unit of Measure
L1-0101B2EAD0002F	Infinium Core, LC to LC	OM4	A-B	Duplex	Plenum	2	Feet
L1-0101B2EAD0003F	Infinium Core, LC to LC	OM4	A-B	Duplex	Plenum	3	Feet
L1-0101B2EAD0004F	Infinium Core, LC to LC	OM4	A-B	Duplex	Plenum	4	Feet
L1-0101B2EAD0005F	Infinium Core, LC to LC	OM4	A-B	Duplex	Plenum	5	Feet
L1-0101B2EAD0010F	Infinium Core, LC to LC	OM4	A-B	Duplex	Plenum	10	Feet
L1-0101B2EAD0015F	Infinium Core, LC to LC	OM4	A-B	Duplex	Plenum	15	Feet
L1-0102B2EAD0001F	Infinium Core, LC to SC	OM4	A-B	Duplex	Plenum	1	Feet
L1-0102B2EAD0002F	Infinium Core, LC to SC	OM4	A-B	Duplex	Plenum	2	Feet
L1-0102B2EAD0003F	Infinium Core, LC to SC	OM4	A-B	Duplex	Plenum	3	Feet
L1-0101B2EAD0001M	Infinium Core, LC to LC	OM4	A-B	Duplex	Plenum	1	Meters
L1-0101B2EAD0002M	Infinium Core, LC to LC	OM4	A-B	Duplex	Plenum	2	Meters
L1-0101B2EAD0003M	Infinium Core, LC to LC	OM4	A-B	Duplex	Plenum	3	Meters
L1-0101B2EAD0004M	Infinium Core, LC to LC	OM4	A-B	Duplex	Plenum	4	Meters
L1-0101B2EAD0005M	Infinium Core, LC to LC	OM4	A-B	Duplex	Plenum	5	Meters
L1-0101B2EAD0010M	Infinium Core, LC to LC	OM4	A-B	Duplex	Plenum	10	Meters
L1-0102B2EAD0001M	Infinium Core, LC to SC	OM4	A-B	Duplex	Plenum	1	Meters
L1-0102B2EAD0002M	Infinium Core, LC to SC	OM4	A-B	Duplex	Plenum	2	Meters
L1-0102B2EAD0003M	Infinium Core, LC to SC	OM4	A-B	Duplex	Plenum	3	Meters
L1-0101B2EA20002F	Infinium Core, LC to LC	OM4	A-B	Duplex	Riser	2	Feet
L1-0101B2EA20003F	Infinium Core, LC to LC	OM4	A-B	Duplex	Riser	3	Feet
L1-0101B2EA20004F	Infinium Core, LC to LC	OM4	A-B	Duplex	Riser	4	Feet
L1-0101B2EA20005F	Infinium Core, LC to LC	OM4	A-B	Duplex	Riser	5	Feet
L1-0101B2EA20010F	Infinium Core, LC to LC	OM4	A-B	Duplex	Riser	10	Feet
L1-0101B2EA20015F	Infinium Core, LC to LC	OM4	A-B	Duplex	Riser	15	Feet
L1-0102B2EA20001F	Infinium Core, LC to SC	OM4	A-B	Duplex	Riser	1	Feet
L1-0102B2EA20002F	Infinium Core, LC to SC	OM4	A-B	Duplex	Riser	2	Feet
L1-0102B2EA20003F	Infinium Core, LC to SC	OM4	A-B	Duplex	Riser	3	Feet
L1-0101B2EA20001M	Infinium Core, LC to LC	OM4	A-B	Duplex	Riser	1	Meters
L1-0101B2EA20002M	Infinium Core, LC to LC	OM4	A-B	Duplex	Riser	2	Meters
L1-0101B2EA20003M	Infinium Core, LC to LC	OM4	A-B	Duplex	Riser	3	Meters
L1-0101B2EA20004M	Infinium Core, LC to LC	OM4	A-B	Duplex	Riser	4	Meters
L1-0101B2EA20005M	Infinium Core, LC to LC	OM4	A-B	Duplex	Riser	5	Meters
L1-0101B2EA20010M	Infinium Core, LC to LC	OM4	A-B	Duplex	Riser	10	Meters
L1-0102B2EA20001M	Infinium Core, LC to SC	OM4	A-B	Duplex	Riser	1	Meters
L1-0102B2EA20002M	Infinium Core, LC to SC	OM4	A-B	Duplex	Riser	2	Meters
L1-0102B2EA20003M	Infinium Core, LC to SC	OM4	A-B	Duplex	Riser	3	Meters



designed to be better.™



Data Communications

60 Woodlawn Street
West Hartford, CT 06110
800.934.5432
www.legrand.us

9024 Keele Street,
Concord, Ontario L4K 2N2
905.738.9195
www.legrand.ca

Follow Us

