

AirMapper™ Site Survey

Wi-Fi and Bluetooth site surveys in the palm of your hand – no laptop, no dongle, and no tethered device.

Overview

Introducing the **AirMapper™ Site Survey** app for both the AirCheck™ G2 Wi-Fi Tester and EtherScope® nXG Portable Network Expert. With AirMapper, users of these portable tools can now quickly and easily gather location-based Wi-Fi and Bluetooth measurements and create visual heat maps of key performance metrics in the Link-Live Cloud Service or AirMagnet® Survey PRO**. The AirMapper app is ideal for quick site surveys of new deployments, change validation, and performance verification.

- Complete faster and easier Wi-Fi and Bluetooth site surveys with an entirely mobile platform (that also includes in-depth analysis tools).
- Perform enterprise-grade active or passive surveys without the need of a dongle or tethered device.
- Perform professional SNR and noise measurements with an easy-to-use handheld instrument.
- Examine real-world coverage and gain insight into user experience to avoid performance complaints and costly Wi-Fi network re-design—See what the user is experiencing at that moment!
- Automatically identify common Wi-Fi network problems using the InSites intelligence in Link-Live.
- Collaborate—Easily share and visualize survey data through free Link-Live Cloud Service (no operating system restrictions).

AirMapper Site Survey on AirCheck G2 or EtherScope nXG provides accurate and complete heat maps by measuring Wi-Fi and Bluetooth performance from the perspective of other mobile devices. Users can map RF signal coverage and visualize Wi-Fi and Bluetooth network performance at every location on the floor. The ease and portability of this solution enables technicians to quickly troubleshoot or validate the Wi-Fi and Bluetooth networks by measuring the real-world experience of mobile device users.

With the cloud-based Link-Live service or AirMagnet Survey PRO creating powerful visualizations of the recorded data, centralized engineers can analyze test results from far-flung remote sites without travel.

* Bluetooth site survey functionality is only available on the EtherScope nXG.

** Bluetooth site survey visualizations are only available in Link-Live.



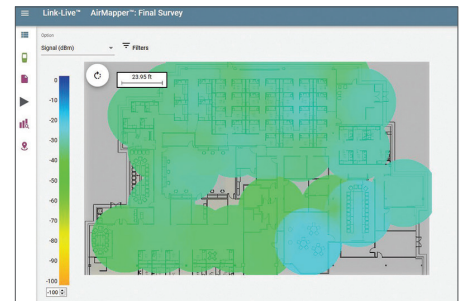
No Laptop



No Dongle



No Tethered Device



Share and visualize survey data through cloud-based Link-Live Service.



Key Features

- Measure Signal Coverage, SNR, AP Coverage, Adjacent and Co-Channel Interference, Tx/Rx Rates and much more
- Identify Wi-Fi Access Point and BLE Beacon Configurations and Properties
- Validate Wi-Fi and Bluetooth Networks from Mobile Device User Point-of-View
- Upload and Visualize Survey Results on Link-Live Cloud Service or AirMagnet Survey PRO

Note: AllyCare support required for some functionality.

Simplified Project Management and Collaboration

The AirMapper Ecosystem supports the creation and calibration of floorplans in Link-Live. Once created, the floorplan(s) can be automatically sent to any of the AirMapper collectors (AirCheck G2 or EtherScope nXG units) in the user's organization.

Comprehensive Wi-Fi Surveys, Passive and Active

AirMapper supports both passive and active surveys. Different from passive surveys, active surveys allow you to perform a site survey while being actively connected to a Wi-Fi network. Active surveys are commonly used to validate Wi-Fi network performance and roaming. With its dual radios, EtherScope nXG enables simultaneous passive and active surveys to gather critical site metrics and validate end-user device experience and roaming on a single walk through.

Bluetooth Site Surveys

Using the AirMapper Site Survey app, EtherScope nXG users can perform passive Bluetooth and BLE surveys, making it easier to validate coverage when using Bluetooth for "Real Time Location" (RTLs) or identify and locate Bluetooth devices in the area.

Address	RSSI	Name	Company Name	Company ID	Beacon Type	TX Power	Eddystone NameSpace	Eddystone Instance	URL	Beacon UUID	Beacon MajorID	Beacon MinorID	Advertisement	Alert Data
053326-00020c	-64	EVT-4			Eddystone UID	-18	0x026c75556...	0x00000000...					General Discoverable	0201040303a...
053326-00020c	-71	EVT-4	Apple, Inc.	76	iBeacon	-59				426c7563-43...	3838	4949	General Discoverable	0201040303a...
053326-00020c	-64	EVT-4			Unknown	--							General Discoverable	0201040303a...
053326-00020c	-68	EVT-4			Eddystone URL	-18			https://www.abac...				General Discoverable	0201040303a...
053326-000309	-74	EVT-3			Eddystone URL	-18			https://www.abac...				General Discoverable	0201040303a...
053326-000309	-71	EVT-3	Apple, Inc.	76	iBeacon	-59				426c7563-43...	3838	4949	General Discoverable	0201040303a...
053326-000309	-76	EVT-3			Eddystone UID	-18	0x026c75556...	0x00000000...					General Discoverable	0201040303a...

Bluetooth and BLE device information

Automatic Problem Detection

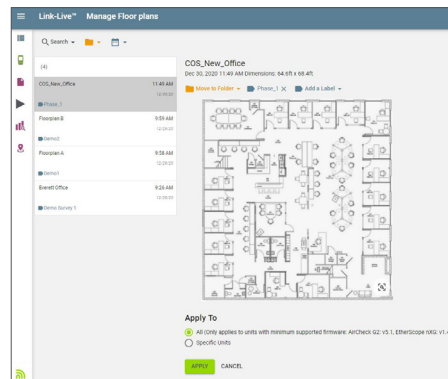
The AirMapper Site Survey app makes it easy for anyone to quickly identify Wi-Fi network problems using the InSites intelligence in Link-Live. InSites simplifies the process of Wi-Fi network troubleshooting by automatically comparing the AirMapper Site Survey data collected on-site to a set of pre-defined thresholds, providing a visual Pass or Fail indication on the heatmap.

Access Point Location

The AirMapper app simplifies the process of validating new installations or locating rogue devices by automatically triangulating the position of Access Points on a floor plan through the use of Link-Live.

Ensure Complete Record Keeping

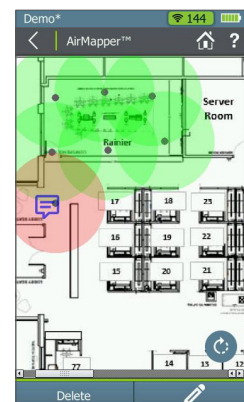
Add Comments on Floor Plan – you can document network issues and changes while performing a site survey. AirMapper allows you to add comments anywhere on the floor plan to record observations or notes, which will be visible on both Link-Live or AirMagnet Survey PRO along with the survey measurements.



Manage floorplans in Link-Live



Access point location and automatic problem area identification



Add comments on floor plans

Comprehensive Visualizations Speed Validation and Troubleshooting

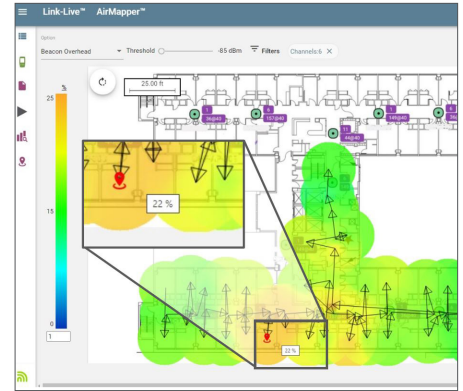
Link-Live and AirMagnet Survey PRO feature a complete set of pre-configured visualizations to help you ensure coverage, connectivity, and performance. Adjusting threshold values indicates areas where measured metrics fail to meet network requirements. The “auto-scale” feature on Link-Live provides more granularity and instant visibility in variations of key Wi-Fi metrics.

Pre-configured heatmaps:

- Signal (dBm)
- Noise (dBm), SNR (dB)
- Co-Channel Interference
- Adjacent Channel Interference
- AP Coverage
- Min Basic Rate (Mbps)
- Beacon Overhead
- Max Tx, Max Rx Rates (Mbps)
- Max, Min MCS

Simplified Wi-Fi Design Validation

AirMapper allows you to quickly and easily validate Wi-Fi designs created with AirMagnet Survey PRO. Import your AirMapper project into AirMagnet Survey PRO and use the available tool set to compare your design to the data collected with AirMapper.



Powerful visualizations for critical Wi-Fi and Bluetooth metrics

Option	Pass/Fail	Limit	Worst
First AP Coverage	Pass	-65 dBm	-59 dBm
Secondary AP Coverage	Pass	-70 dBm	-60 dBm
SNR (dB)	Pass	25 dB	32 dB
Co-Channel Interference	Pass	4 APs	1 APs
Adjacent Channel Interference	Fail	1 APs	6 APs
Beacon Overhead	Fail	15 %	19 %
Max TX Rates (Mbps)	Pass	512 Mbps	800 Mbps

Automatic problem detection with the InSites intelligence

Premium Customer Services



AllyCare is a comprehensive support and maintenance service for NetAlly's Network Tools and AirMagnet® software that offers significant value over standard warranty. Membership of AllyCare can be purchased as either a 1-year membership or the value-added 3-year membership rate.

support.netally.com



netally.com/products/airmapper-site-survey



simplicity • visibility • collaboration