

Honeywell

UEMConnect Settings

for Honeywell Mobile Devices powered by
Android™

User Guide

Disclaimer

Honeywell International Inc. (“HII”) reserves the right to make changes in specifications and other information contained in this document without prior notice, and the reader should in all cases consult HII to determine whether any such changes have been made. HII makes no representation or warranties regarding the information provided in this publication.

HII shall not be liable for technical or editorial errors or omissions contained herein; nor for incidental or consequential damages resulting from the furnishing, performance, or use of this material.

This document contains proprietary information that is protected by copyright. All rights are reserved. No part of this document may be photocopied, reproduced, or translated into another language without the prior written consent of HII.

©2025 Honeywell Group of Companies. All rights reserved.

Android is a trademark of Google Inc.

Other product names or marks mentioned in this document may be trademarks or registered trademarks of other companies and are the property of their respective owners.

Web Address: automation.honeywell.com

Patents

For patent information, please refer to www.hsmpats.com.

TABLE OF CONTENTS

Customer Support and Warranty	xix
Technical Assistance	xix
Product Service and Repair	xix
Limited Warranty	xix
Chapter 1 - About UEMConnect	1
Overview	1
What's New in UEMConnect?	1
What was added in Version 1.04.00.0182?	1
Chapter 2 - Snippet Configuration	3
How Snippet Configuration Works:	3
How to Use Snippet Configuration:	4
Chapter 3 - Profile Name	5
How to Use the UEMConnect Feedback App	5
Profile Name	5
Chapter 4 - Enterprise Browser Settings	7
Configuration	7
Show Maintenance Due Alerts	7
Show Preload License Alerts	7
Show License Outdated Alert	7
Show License Validity Completed Alert	8
Show Grace Period Alert	8
Show License Alerts for Admin	8
Block Popup	8
Allow External Windows	9
Portal Home Page Button	9
Pull Down Refresh	9
Exit Password Enable	9
Enable Clipboard	10
Appearance	10

Full Screen Mode	10
appearance auto fit	10
appearance bar mode	10
Browser Orientation Mode	11
Soft Input Adjusts Resize	11
Portal One	11
Portal one name	11
Portal one homepage	11
Enable Zoom Controls	12
Portal one use wide viewport	12
Portal Two	12
Portal Two enabled	12
Portal name	12
Portal homepage	13
Enable Zoom Controls	13
Use wide viewport	13
Portal Three	13
Portal Three enabled	13
Portal name	14
Portal homepage	14
Enable Zoom Controls	14
Use wide viewport	14
Portal Four	15
Portal Four enabled	15
Portal name	15
Portal homepage	15
Enable Zoom Controls	15
Use wide viewport	16
Keys	16
Disable back button	16
Chapter 5 - Download Files	17
Download File from Source to Destination	17
Multiple File Download	17
Prevent Repeat of Download	18
Chapter 6 - Applications	19
General Settings	19
Whitelist/Blacklist Apps	19
Operational Intelligence Settings	20
Agent Connect Direct Settings	20
SSClient Settings:	20
Enable Agent	20
Enable Discovery	20
Associated Server IP	20

Broadcast name for discovery	21
Asset Msg send interval (minutes)	21

Chapter 7 - Display Settings 23

Assist Voice Input	23
Adaptive Brightness	23
Brightness Level	24
Disable LCD Dimming	24
Display Sleep	24
Accelerometer Rotation	25
Full Accelerometer Rotation	25
User Selected Rotation	26
Density Smallest Width	26
Font Size	26
Enable WiFi Display	27
Wallpaper	27
Clear Wallpaper	27
Screen Dim Timeout	27
On Charge Screen Off Timeout	28
Hide System UI Navigation button	28
Enable Android Splitscreen	28
Enable Clipboard	28
Enable Android Clipboard Share	28
Block Installation of Packages	29
Enable Home Longpress	29
Lock Screen Accordance Size	29
Lock Screen Accordance Left	29
Lock Screen Accordance Right	29
Hide VoLTE icon and notification	30
Daydream	30
Enable Screensaver	30
Screensaver Components	30

Chapter 8 - Input and Output Settings 31

Display Dock Settings	31
Display Dock Orientation Portrait	31
Display Dock Mode Primary	31
Display Dock Mode Hdmiaudio	31
Display Dock Mode Resolution	31
Display Dock Mode Density	32
Display Dock Mode Resolution Width	32
Display Dock Mode Resolution Height	32
Display Dock Mouse Right Back	32
Allow Manual Override of USB Keyboard Layout	32
USB Keyboard Layout	32

LED Settings	33
Battery LED Mode	33
Battery Led Mix Mode	33
Power LED	34
Wi-Fi LED	34
Link LED	34
Key Remap and Wakeup Settings	34
Ignore keyRemap to PTT	34
Key Remap Settings	35
Wakeup Key Settings	35
Clear All Key Remap Settings	37
KeyRemap to Intent	37
Sticky (Keys) Options	37
Touch Settings	38
Touch Panel Mode	38
Storage Settings	38
SD Card Access Enabled	38
USB Settings	39
Lock USB Mode	39
Disable USB Pop Up	39
Enable USB Pop Up	39
Heater Settings	40
Enable Heater	40
DeltaT	40
EnableT	40
DisableT	41
DurationHeater	41
SampleTimes	41
SlowInterval	42
FastInterval	42
ChillTime	43
DurationLcd(s)	43
DurationScan	44
LowBatteryPercent	44
Power on time	44
Preemptive	45
PreemptiveDelay	45
PreemptiveDuty	46
DriverMode	46
KeyBlanking	47
Defroster Settings	47
Enable Defroster	47
Defroster Trip Point	48
Defroster Operation Mode	48
Defroster State	49
Vehicle Dock Settings	49

VDock Mode	49
Chapter 9 - Device Management Settings	51
Honeywell Launcher Placeholder	51
HLPH Password	51
Clear HLPH Password	51
Auto Install Settings	52
Auto Install	52
Auto Install Notification	52
Auto Install Upgrade UI	52
EZConfig Settings	53
Enable User Password	53
User Password	53
Honeywell Provisioning Mode Settings	54
Provisioning Mode	54
Clear Provision Password	54
Provisioning Mode Password Settings	54
Provisioning Mode Whitelist Applications	55
Provisioning Intents Unrestricted	55
Honeywell Restriction Settings	56
Hide Emergency Button	56
Disable Emergency Alerts	56
Disable Amber Alerts	57
Disable Extreme Alerts	57
Disable Severe Alerts	57
Enable Test Alerts	58
Restrictions - Network Settings	58
Restrict Network Location Provider	58
Restrict Roaming Data	59
Restrictions - Notification Settings	59
Restrict Cacert Notification	59
Restrict Notification LED	60
Restrict System Notification	60
Restrictions - Quick Menu Settings	61
Hide WiFi	61
Hide Bluetooth	61
Hide Do Not Disturb	62
Hide Cellular	62
Hide Airplane Mode	63
Hide Auto Rotate	63
Hide Flashlight	64
Hide Location	64
Hide Cast	65
Restrict Settings	65
Restrict Battery	66
Restrict Multi-User	66

Restrictions - Storage Settings	67
Restrict SD Card Access	67
Restrictions - MDM Settings	67
Restrict Factory Reset in Boot Menu	67
Disable Factory Data Reset	68
Disable Recovery Keychords Policy	68
SD card access enabled	68
Disable Android Share Option	68
Restrict Clipboard	69
Restrict Guest User	69
App Install Whitelist	69
App Install Blacklist	69
App Install WhiteBlacklist Mode	70
Restrict GMS Apps	70
USB Host WhiteList	70
Disable White Black List	70
Clear App Install WhiteBlacklist	70
Keep Setup Wizard Running	71
Clear Disabled Components List	71
Disable applications components state	71
Block Development Mode	71
Current Email Mode	72
Package Install Unknown Apps Permission	72
Show Notification On LockScreen	72
Battery Optimizations Modes Whitelist	72
Disable Certificate By Name	72
Restrict Bluetooth	73
Restrict Google Backup	73
Restrict GPS Location Provider	73
Restrict Installation from Unknown Sources	73
Restrict NFC	73
Restrict Screen Capture	74
Restrict WiFi	74
Restrict OS Upgrade	74
Restrict Nearby Share	74
Restrict GMS on device	75
Google Account FRP	75
Remove Quick Settings Policy	75
Chapter 10 - Network Settings	77
Network Settings	77
DHCP Host Name	77
Captive Portal HTTPS URL	77
Captive portal use https	77
Captive portal fallback url	78
Captive portal other fallback urls	78

Captive portal http url	78
Captive Portal Mode	78
Background Data Setting	78
Safe Mode Enabled	79
Airplane Mode On	79
Private DNS	79
Private DNS Provider Hostname	79
WiFi Domain	80
NFC Settings	80
Beam Enabled	80
NFC Enabled	80
Mobile Data Enable	81
Set Preferred Network Type	81
Default Sim for sending SMS	81
Default Sim for making Calls	81
Default Sim for Data or Internet usage	81
Enable NFC Tag detection on device lock	82
Ethernet Settings	82
Ethernet Enable	82
Ethernet Static	82
AuthSetting	83
CA Certificate	83
User Certificate	83
Identity	83
Anonymous Identity	83
Password	84
Static IP Value	84
Network Prefix Length	84
Gateway	84
DNS 1	85
DNS 2	85
Proxy Name	85
Proxy Port	86
Bypass Proxy	86
WiFi Settings	87
WiFi Frequency Band	87
WiFi ESE Enable	87
WiFi FT Enable	88
Data Stall Recovery	88
WiFi gDot11 Mode	89
WiFi Power Save	89
WiFi gP2P Enabled	90
WiFi WMM Configuration	90
WiFi Beacon Loss	90
Force WiFi Priority	91
WiFi Operating Channel Enable	91

Select the channels	92
Honeywell network stack	92
Enable MAC Randomization Support	92
MAC Randomization ON or OFF	92
RSSI Threshold	93
RSSI Difference	93
Roaming Band	94
Reset Roaming Parameters	94
WLAN Country Code	94
Clear WLAN Country Code	95
WiFi Available Notification	95
WiFi Enabled	95
Turn on Wi-Fi automatically	96
WiFi Whitelist	96
Enable WiFi Background Scan	96
WWAN Settings	97
Cellular Data Enabled	97
Roaming Data Enabled	97
Delete All APNs	97
Reset to Default Enabled	98
Preferred MCC	98
Preferred MNC	98
WWAN APN Profile	98
Name	98
APN	98
APN Proxy	99
Port	99
Username	99
APN Password	100
Server	100
MMSC	100
MMS Proxy	100
MMS Port	101
MCC	101
MNC	101
Authentication Type	102
Type	102
Protocol	102
Roaming Protocol	103
Bearer	103
MVNO Type	104
MVNO Match Data	104
VPN Profile	105
VPN Profile Name	105
VPN Type	105
VPN Server Address	105

VPN Username	105
VPN Password	105
Save Login	105
VPN Mppe	105
L2TP Secret	105
IPSec Identifier	106
IPSec Preshared Key	106
IPSec User Certificate	106
IPSec CA certificate	106
IPSec Server Certificate	106
DNS Search Domains	106
DNS Servers	106
Forwarding Routes	106
Delete WiFi by SSID	107
Delete Wi-Fi AP	107
Bluetooth Settings	107
Bluetooth Whitelist Enabled	107
Add Bluetooth Whitelist	107
Clear Bluetooth Whitelist	108
Bluetooth Device Name	108
Enable Bluetooth Silent Pairing	108
Bluetooth Enable	109
Bluetooth FTP Profile	109
Bluetooth Device SPR	109
Mobile Network	110
Set Data Warning	110
Set Data Limit	110
Set Data Limit Value	110
Voice over Wi-Fi	110
Voice over Wi-Fi mode	111
Voice over Wi-Fi Roaming mode	111
Voice over LTE	111
Voice over New Radio	111
Chapter 11 - Scanner Settings	113
Suppress Prompt for ScanHandle	113
Key Repeat Disable	113
Chapter 12 - System Settings	115
Retain app login state	115
Enable Edit Box Initial Focus	115
Change OS Mode	115
Grant Run Time Permissions	115
Disable Privacy Reminder on MDM Enrollment	116
Allow to ignore CarMode	116

Disable Quick Camera Access	116
Key Record Current Time	116
Disable android settings app	116
Disable application state	117
Disable Scan Trigger Keyguard Locked	117
Scan Handle Setting	117
Hide Provisioner Tasks UI	117
Dispatch scan keys to App	118
Scan Key Wakeup Behavior	118
Default Browser	118
Clear Previous Scan Results	118
Enhance keyboard enter option	119
Enable scan camera	119
OS SDK Setting	119
Disable Revoke App Permission if app is not used	119
Disable Settings App Components	120
Enable Network and Internet	120
Enable Connected Devices	120
Enable Apps and Notifications	120
Enable Apps	120
Enable Notifications	121
Enable Battery	121
Enable Display	121
Enable Sound	121
Enable Storage	122
Enable Privacy	122
Enable Location	122
Enable Security	122
Enable Security and Privacy	123
Enable Accounts	123
Enable Passwords and Accounts	123
Enable Accessibility	123
Enable HoneywellSettings	124
Enable Digital Wellbeing and parental controls	124
Enable Google	124
Enable System	125
Enable About Phone	125
Date and Time	125
Auto Time	125
Auto Time Zone Enabled	126
Location time zone detection enabled	126
Time Format	126
Date and Time	127
Select Time Zone	127
Update time at once	127
Ignore time sync with mobile network	128

Sets the Time from NTP	128
Show NTP Server Option	128
Doze Mode	129
Doze Mode Settings	129
Logger Settings	129
HXLogger Settings	129
HXLogger Settings	130
Logger Path	130
Max Logger Size	130
ANR Plugin	130
Tombstone Plugin	131
TCPDump Plugin	131
TCPDump Interface Value	131
Enable Snapshot Plugin	132
Snapshot Log Interval	132
Snapshot Log Keep Time	132
Enable SnapShot topcmd	133
Enable SnapShot CPUInfo	133
Enable SnapShot MemInfo	133
Enable SnapShot Diskinfo	134
Enable SnapShot ProcessInfo	134
Enable Dumpsys Plugin	134
Dumpsys Log Interval	135
Dumpsys Log KeepTime	135
Enable Dumpsys AudioInfo	135
Enable Dumpsys Battery Info	136
Enable Dumpsys Mem Info	136
Enable Dumpsys Location Info	136
Enable Dumpsys WiFi Info	137
Enable Dumpsys WiFi Scanner Info	137
Enable Dumpsys Power Info	137
Enable DiagMdLog Plugin	138
Enable Camera Plugin	138
Enable Logfilter Plugin	138
DiagMdLog CFG File	139
Language and Input Settings	139
Locale Country	139
Locale Language	139
Default Input Method	139
Show Hardware Input Method	140
Enable Keyboard Suggestion	140
EnablePublixSetting HonKeyboard	140
Autofill Service	141
Enable Google Keyboard Emoji	141
Enable Keypress Sound for Physical Keyboard	141
Vibrate on Key Press	142

Pointer Speed	142
Spell Checker Enabled	142
Selected Spell Checker	143
Enabled Input Methods	143
Toggle Virtual Keyboard	143
Text to Speech	144
TTS Default Rate	144
Location	144
WiFi Scan Always Enabled	144
Bluetooth Low Energy Scan Always Enabled	145
Location Settings	145
Printing Configuration	146
Enable Cloud Print Service	146
Screen Lock Settings	146
None	146
Saved Screen Lock Password	146
Secure Start-Up Enabled	146
Password Quality	147
Screen Lock Password	147
Clear Screen Lock Password	147
Security	147
Automatically lock	147
Lock on Power Key Press Always Enabled	148
Silently Activate Device Admin Applications	148
Show Password Enabled	148
Users	149
Add Users From Locked Screen Enabled	149
Sound and Notification Settings	149
Haptic Feedback Enabled	149
Alarm Volume	150
Music Volume	150
Ring Volume	150
Call Volume	150
Vibrate When Ringing	151
Notification Sound	151
Ringtone Sound	151
DTMF Tone Enabled	152
Sound Effects Enabled	152
Lockscreen Sounds Enabled	152
Charging Sounds Enabled	153
Disable the Notification for Packages	153
Enable the Notification for Packages	153
Global Freeze Notification	153
Freeze Notification	153
Clear Freeze Notification List	153
Clear Disable Notification List	154

Clear Enable Notification List	154
Allow Notification dots	154
Enable Led Light on ScreenOn	154
Disable Physical Keyboard Notification	154
Shortcut to prevent ringing	154
Show Notifications On Locked Screen Enabled	154
Alarm Sound Setting	155
Alarm Sound By URI	155
Alarm Sound By Name	155
Enable Sync for all volumes	156
Volume sync min	156
Volume sync max	156
Sync volume level	156
Notification sound over bt headset when voip active	156
Audio feature for Compress_VOIP	156
TTS Audio Output Mode	157
Power Mode Settings	157
Power Mode	157
Switch State to Sleep (Auto)	157
Switch State to Shutdown (Auto)	158
Switch State to Sleep (ACDC)	159
Switch State to Shutdown (ACDC)	160
Switch State to Sleep (Ignition)	161
Switch State to Shutdown (Ignition)	161
Switch State to Sleep (UPS)	162
Switch State to Shutdown (UPS)	163
Switch State to Sleep (Ignition Lost)	164
Switch State to Shutdown (Ignition Lost)	164
Unattended Mode	165
Honeywell Power Settings	166
Power Mode Disable	166
Switch Vehicle State to Sleep On	166
Switch Vehicle State to Sleep Off	166
Switch Vehicle State to Shutdown	167
Web Applications SDK	168
Port	168
Enabled	168
Accessibility	169
Accessibility Display Magnification Enabled	169
Accessibility Enabled	169
Accessibility Shortcut Enabled	169
Accessibility Shortcut Target Service	170
Accessibility Shortcut Dialog Shown	170
Accessibility Shortcut on Lock Screen	170
Enabled accessibility services	171
tts_default_synth	171

High Text Contrast Enabled	171
In-Call Power Button Behavior	172
Long Press Timeout	172
Accessibility Display Inversion	172
Accessibility Display Remove Animations	173
Accessibilty Captioning	173
Accessibility Captioning Locale	173
Accessibility Captioning Font Scale	174
Accessibility Display Daltonizer	174
Accounts	175
Data Auto-Sync	175
Battery	175
Battery Upper Limit	175
Battery Lower Limit	176
Open or Close Battery NI Check	176
UPS30BAY	176
Enable Fast Charge	177
Show Battery Percentage	177
Enable Battery Logs	177
High temperature warning threshold	177
Disable Notify Battery Saver	178
Sensors	178
Keep Device Awake on Motion Detection	178
Wake Device Up on Motion Detection	178
Suspend Device When Face Down	179
Screen Off when device is in pocket	179
Developer Settings	180
Bluetooth HCI Log	180
Bug report enabled	180
Enable Bug Report	180
Enable View Attributes	181
Enable Show Taps	181
Show Pointer Location	181
USB Audio Automatic Routing Disabled	182
Enable All ANR Visibility	182
Aggressive WiFi To Mobile Handover	182
Keep Mobile Data Always Active	183
Boot From Charger Mode	183
Enable ADB	184
Hupgrader Settings	184
HUpgrader Custom Enable	184
HUpgrader Operating Mode	184
HUpgrader Server URL	184
HUpgrader Server Downgrade URL	185
HUpgrader Downgrade Password	185
HUpgrader Del After Upgrade	185

HUpgrader Battery Threshold	185
HUpgrader Time Sharing	186
HUpgrader Check on Bootup	186
HUpgrader Check on Intent	186
HUpgrader Alarm	186
HUpgrader Reboot After OS/Software Upgrade	186
HUpgrader Defer Reboot	187
HUpgrader Maximum Reboot Deferrals	187
HUpgrader Defer Reboot Units	187
HUpgrader Defer Reboot Count (in Hours or Minutes)	187
HUpgrader Upgrade Major	187
HUpgrader Check on Interval	187
HUpgrader Check on Interval Units	188
HUpgrader Check on Interval Count (in Days or Hours)	188
HUpgrader Install Time	188
HUpgrader download network type	188
Chapter 13 - System Update Settings	189
OS Update Package URL	189
Enable OS Downgrade with Enterprise Reset	189
Chapter 14 - Data Collection Settings	191
Data Processing Settings	191
Data Editing Plugin	191
Editing Settings	191
Data Intent	192
Action	192
Category	192
Class Name	192
Data Intent	193
Package Name	193
Charset	193
Launch Browser	194
Launch EZConfig	194
Prefix	195
Scan to Intent	195
Suffix	195
Symbology Prefix	196
Wedge as keys	196
Wedge	196
Decode Settings	197
Center Decode	197
Window Bottom	197
Window Left	197
Window Right	198

Window Top	198
Decode Security	198
Decode Set	198
DPM Mode	199
Region of Interest	199
Video Mode	200
Imager Settings	200
Exposure Mode	200
Exposure (μ s)	200
Gain	201
Illumination Intensity	201
Maximum Exposure Time (μ s)	201
Maximum Gain	201
Override Recommended Values	202
Rejection Limit	202
Sampling Method	202
Target Acceptable Offset	203
Target Percentile	203
Target Value	203
Notification Settings	204
Bad Read Notification	204
Good Read Notification	204
Vibrate on Notification	205
Trigger Settings	205
Same Symbol Timeout	205
Enable Same Symbol Timeout	205
Same Symbol Timeout	206
Decode Timeout	206
Enable Scan Trigger	206
Scan Delay	207
Trigger Scan Mode	207

Customer Support and Warranty

Technical Assistance

To search our knowledge base for a solution or to log in to the Technical Support portal and report a problem, go to automation.honeywell.com.

Product Service and Repair

Honeywell International Inc. provides service for all of its products through service centers throughout the world. Go to automation.honeywell.com and select Support to find a service center near you or to get a Return Material Authorization number (RMA #) before returning a product.

Limited Warranty

For warranty information, go to automation.honeywell.com and click **Support >Productivity > Warranties**.

ABOUT UEMCONNECT

Overview

Honeywell UEMConnect enables customers to use the Google OEMConfig protocol to perform enterprise configuration and enhance the management of Honeywell Mobility Edge™ devices. It seamlessly integrates with EMM solutions to expose Honeywell management extensions directly on the EMM console. UEMConnect provides exclusive access to hundreds of advanced Honeywell proprietary settings and provides supplemental access to standard EMM features. EMM providers may also make use of generic Android APIs to provide standard EMM functionality.

Honeywell UEMConnect is available for download in the Google Play™ store.

Note: Offline mode support is also available. The UEMConnect apk can be downloaded from Honeywell's software download portal at honeywell.com/PSSsoftware-downloads. Refer to the user guide for your device for information on downloading and installing software from the download portal.

What's New in UEMConnect?

What was added in Version 1.04.00.0182?

- Enterprise Browser Settings
- Voice Over Wi-Fi
- Voice Over Wi-Fi Mode
- Voice Over Wi-Fi Roaming Mode
- Voice Over LTE
- Voice Over New Radio
- Hide System UI Navigation Button
- Delete Wi-Fi AP

SNIPPET CONFIGURATION

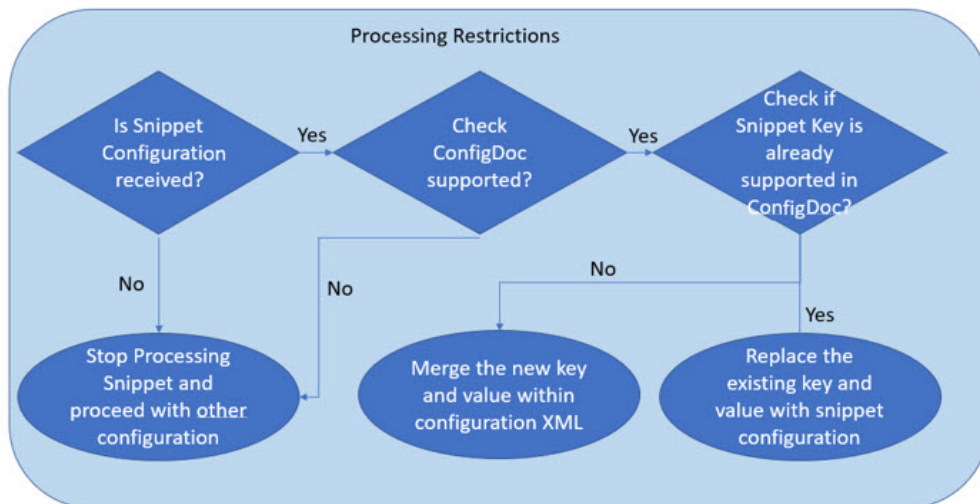
Snippet Configuration gives you the ability to send the XML snippet generated from Enterprise Provisioner to configure the settings.

In the current scenario, the list of settings (which can be configured from MDM) are displayed in the MDM UI. They are categorized into the following configurations: Display Configuration, Application Configuration, Network Configuration, DataCollection Configuration, Input and Output Configuration, etc.

The Snippet Configuration element can be used to configure any of the DataCollection, Provisioner, DeviceConfig, EZConfig, and WebInterface XML snippets separately.

For Example: The standard Enterprise Provisioner tool can be used to create the snippet for configuring the specific setting. Using the Snippet Configuration field, you can send the XML snippet to all MDM enrolled devices.

How Snippet Configuration Works:



Supported ConfigDoc: DataCollection, Device config, DeviceConfig, EZConfig, SSClient, WebInterface XML

How to Use Snippet Configuration:

Add the snippet from Enterprise Provisioner in the text box displayed.

Single snippet configuration can take only one key at a time. If you want to use multiple keys, use Add option to configure as many snippet configurations as you want. Multiple snippets can be sent at a time with this ability.

PROFILE NAME

The Profile Name setting is used with the UEMConnectFeedback app. The UEMConnectFeedback app sends information from mobile devices using Honeywell UEMConnect to your MDM console so that you can view feedback. For example, the app can report if updates pushed to a mobile device were installed successfully.

How to Use the UEMConnect Feedback App

Download the UEMConnect Feedback app from the Google Play™ store. Refer to the UEMConnectFeedback app quick start guide for more information.

Configure the Profile Name setting.

Profile Name

Enter the profile name. This profile name can be used to identify the deployment in the Honeywell UEMConnect Feedback application.

ENTERPRISE BROWSER SETTINGS

Use the settings described in this section to configure Honeywell's Enterprise Browser app.

Configuration

Show Maintenance Due Alerts

Show maintenance due alerts for users (Configurable for only perpetual license). Set to "True" to show or "False" to hide.

Default

True

(Applicable for Android 9 and higher)

Show Preload License Alerts

Show one year maintenance alerts for preloaded license. Set to "True" to show or "False" to hide.

Default

True

(Applicable for Android 9 and higher)

Show License Outdated Alert

Show license outdated alert to users. Set to "True" to show or "False" to hide.

Default

True

(Applicable for Android 9 and higher)

Show License Validity Completed Alert

Show license validity completed alert to users. Set to "True" to show or "False" to hide.

Default

True

(Applicable for Android 9 and higher)

Show Grace Period Alert

Show grace period alert to users. Set to "True" to show or "False" to hide.

Default

True

(Applicable for Android 9 and higher)

Show License Alerts for Admin

Show license alerts for admin (independent of other license configurations). Set to "True" to show or "False" to hide.

Default

True

(Applicable for Android 9 and higher)

Block Popup

Block whether JavaScript can open windows automatically. Set to "True" to block popups or "False" to allow popups.

Default

True

(Applicable for Android 9 and higher)

Allow External Windows

All configured portal settings will not be applicable for newly created external window. Set to "True" to allow external windows or "False" to not allow.

Default

False

(Applicable for Android 9 and higher)

Portal Home Page Button

Set if the Home button should appear on the action bar. Set to "True" to display the Home button or "False" to not display.

Default

False

(Applicable for Android 9 and higher)

Pull Down Refresh

Determines if swiping down on the screen refreshes the web page. Set to "True" to have swiping down refresh or "False" to not refresh.

Default

False

(Applicable for Android 9 and higher)

Exit Password Enable

Require users to enter an exit password to exit Enterprise Browser. Set to "True" to enable or "False" to disable.

Default

False

(Applicable for Android 9 and higher)

Enable Clipboard

Enable or disable the copy-paste option. Set to "True" to enable or "False" to disable.

Default

True

(Applicable for Android 9 and higher)

Appearance

Full Screen Mode

Enable removal of system bars. Set to "True" to hide the system bar or "False" to display. (Not supported in Android 11.)

Default

False

appearance auto fit

Scale windows to automatically fit the width of the display screen. Set to "True" to enable or "False" to disable.

Default

True

(Applicable for Android 9 and higher)

appearance bar mode

Configures the action bar so that it is hidden, visible, or only visible when the user swipes the screen. Set to 0 to show, 1 to hide, or 2 to require swipe.

Default

0

(Applicable for Android 9 and higher)

Browser Orientation Mode

Configures the browser orientation. Set to 0 for Default, 1 for Sensor, 2 for Portrait or 3 for Landscape.

Default

0

(Applicable for Android 9 and higher)

Soft Input Adjusts Resize

Adjust or resize the web page according to the Soft Input Keyboard. Set to "True" to enable or "False" to disable.

Default

True

(Applicable for Android 9 and higher)

Portal One

Portal one name

Name for the portal on the browser screen.

Default

Portal One

(Applicable for Android 9 and higher)

Portal one homepage

Start page for the portal.

Default

file:///android_asset/portalOneHome.html

(Applicable for Android 9 and higher)

Enable Zoom Controls

Enable Zoom controls in the portal. Set to "True" to enable or "False" to disable.

Default

True

(Applicable for Android 9 and higher)

Portal one use wide viewport

Enable Enterprise Browser to take parameters from web page meta-tags. Set to "True" to enable or "False" to disable.

Default

True

(Applicable for Android 9 and higher)

Portal Two

Portal Two enabled

Enable Portal Two in Enterprise Browser. Set to "True" to enable or "False" to disable.

Default

True

(Applicable for Android 9 and higher)

Portal name

Name for Portal Two on the browser screen.

Default

Portal Two

(Applicable for Android 9 and higher)

Portal homepage

Start page for the portal.

Default

file:///android_asset/portalTwoHome.html

(Applicable for Android 9 and higher)

Enable Zoom Controls

Enable Zoom controls in the portal. Set to "True" to enable or "False" to disable.

Default

True

(Applicable for Android 9 and higher)

Use wide viewport

Enable Enterprise Browser to take parameters from web page meta-tags. Set to "True" to enable or "False" to disable.

Default

True

(Applicable for Android 9 and higher)

Portal Three

Portal Three enabled

Enable Portal Three in Enterprise Browser. Set to "True" to enable or "False" to disable.

Default

True

(Applicable for Android 9 and higher)

Portal name

Name for Portal Three on the browser screen.

Default

Portal Three

(Applicable for Android 9 and higher)

Portal homepage

Start page for the portal.

Default

file:///android_asset/portalThreeHome.html

(Applicable for Android 9 and higher)

Enable Zoom Controls

Enable Zoom controls in the portal. Set to "True" to enable or "False" to disable.

Default

True

(Applicable for Android 9 and higher)

Use wide viewport

Enable Enterprise Browser to take parameters from web page meta-tags. Set to "True" to enable or "False" to disable.

Default

True

(Applicable for Android 9 and higher)

Portal Four

Portal Four enabled

Enable Portal Four in Enterprise Browser. Set to "True" to enable or "False" to disable.

Default

True

(Applicable for Android 9 and higher)

Portal name

Name for Portal Four on the browser screen.

Default

Portal Four

(Applicable for Android 9 and higher)

Portal homepage

Start page for the portal.

Default

file:///android_asset/portalFourHome.html

(Applicable for Android 9 and higher)

Enable Zoom Controls

Enable Zoom controls in the portal. Set to "True" to enable or "False" to disable.

Default

True

(Applicable for Android 9 and higher)

Use wide viewport

Enable Enterprise Browser to take parameters from web page meta-tags. Set to "True" to enable or "False" to disable.

Default

True

(Applicable for Android 9 and higher)

Keys

Disable back button

Enable or disable the Back button on the browser. Set to "True" to disable the Back button or "False" to enable the Back button.

Default

False

(Applicable for Android 9 and higher)

DOWNLOAD FILES

This chapter describes UEMConnect features that are used to download files.

Download File from Source to Destination

This setting allows a user to download files from the source location to the destination location and run specific intents on the device.

It can also be used to reboot the device from the UEMConnect restrictions.

Source File Path: Provide the Source File Path (specify the full path of the file from the server (http://, https://, ftp:// and file://) or device).

Destination Path: Provide the Destination Path for the device (e.g., /storage/emulated/0/honeywell/autoinstall/).

Run Intent: Run Intent activity manager commands here.

Reboot Required: Set this flag to true if reboot is required.

Prevent Repeat of Download: Set this flag to true to prevent repeat of download.

Multiple File Download

This setting enables users to download multiple files from a specified source location to a designated destination location and execute specific intents on the device.

Source File Path: Provide the full path of the file from the server (using protocols such as http://, https://, ftp://, or file://) or the device.

Destination Path: Provide the Destination Path for the device (e.g., /storage/emulated/0/honeywell/autoinstall/).

Run Intent: Enter Intent activity manager commands here.

Prevent Repeat of Download: Set this flag to true to prevent repeat of download.

Note: The "Reboot Required" option is in the "Download File from Source to Destination" feature. Enable the Reboot Required option to automatically restart the mobile device after finishing either a single file or multiple file downloads. This simplifies the process and ensures that the device reboots seamlessly once all downloads are successfully processed.

Prevent Repeat of Download

The Prevent Repeat of Download flag is used with UEMConnect download features.

Configure the flag as "True" to prevent repeat of download. The Default is False. (To continue a download, either modify the Source URL or rename the file when the flag is True.)

Follow these steps to configure this functionality:

1. Choose "True" to prevent the repeated download of the same file specified in the Source File Path setting.
2. If you need to download a different configuration file, modify the Source File Path. You can do this by changing the URL or the file name.
3. Alternatively, select "False" if you want to allow the redownload of the same configuration file.
4. The default setting is "False."

You can use this setting as a workaround to prevent the unnecessary redownload of the same file when the synchronization between the MDM system and the device occurs.

General Settings

Whitelist/Blacklist Apps

Whitelist/Blacklist Apps allows the user to configure which system applications can/cannot be used on a device.

Use colon (:) to separate multiple entries.

To add or remove applications to (from) whitelist/blacklist, select a desired option from the list.

The setting has two options:

- **0** = Add applications to White or Blacklist.
- **1** = Remove applications from White or Blacklist.

Value

To whitelist/blacklist an application, specify the value WhiteApps or BlackApps and provide the name that identifies the system application, and then specify to add or remove application.

For example:

Example 1: WhiteApps=com.android.chrome:com:1

Example 2: BlackApps=com.android.chrome:com:0

To whitelist/blacklist more applications, specify the value WhiteApps or BlackApps and provide the application names using colon(:) as a separator then specify to add or remove applications.

For example:

Example 1: WhiteApps=com.android.chrome:com.honeywell.tools.battmon:1

Example 2: BlackApps=com.android.chrome:com.honeywell.tools.battmon:0

Operational Intelligence Settings

Agent Connect Direct Settings

This setting enables the device to collect and send certain technical information (for example: Battery charge, Connectivity, and Location) concerning the device and its usage to Honeywell.

To enable or disable the Agent Connect Direct Settings, select a desired option from the drop-down list box provided.

The setting has two options:

- **Enable** will activate the Agent Connect Direct Settings on the device.
- **Disable** will deactivate the Agent Connect Direct Settings on the device.

Value

Disable

SSClient Settings:

Enable Agent

Enables the Staging Hub agent for connecting to a Staging Hub server.

Value

Default: 0 = Disabled

Enable Discovery

Enables the Staging Hub agent to be able to be discovered automatically from the Staging Hub server. The device must be on the same subnet as the server.

Value

Default: 1 = Enabled

Associated Server IP

The IP address of the Staging Hub server to connect to.

Broadcast name for discovery

The name of the Staging Hub server. Enter the name of the server to connect to.

Value

Default: INTERMEC

Asset Msg send interval (minutes)

The Staging Hub agent will send an asset msg to the Staging Hub server on this interval. The interval is in minutes.

Value

Default: 0

DISPLAY SETTINGS

Assist Voice Input

Define the assistant app used with voice input. Set NONE to disable the assistant app or set the component name of the app to enable it as an assistant. To set Google Assistant as the default assist app enter:

`com.google.android.googlequicksearchbox/com.google.android.voiceinteraction.GsaVoiceInteractionService`

Value

`com.google.android.googlequicksearchbox/com.google.android.voiceinteraction.GsaVoiceInteractionService`

(Applicable for Android 8 and higher)

Adaptive Brightness

This setting allows the device to automatically adjust the brightness of the display based on the light reaching the device's ambient light sensor.

To enable or disable Adaptive Brightness setting on the device, select a desired option from the drop-down list box.

The setting has two options:

- **Enable** will activate the Adaptive Brightness setting on the device.
- **Disable** will deactivate the Adaptive Brightness setting on the device.

Value

Disable

Brightness Level

Brightness level is the perceived intensity of light coming from the screen of the device.

This setting allows the user to set the screen brightness of the device to a desired level. The screen back light brightness ranges from 0 to 255.

You can type a desired brightness value within the range in the text box provided.

Value

255

Disable LCD Dimming

Set value 1 to disable LCD dimming and 0 to enable

Default: 0 = Disabled

Display Sleep

Display Sleep is the time limit after which the device will timeout and automatically turn the display screen off.

To select the display time out value:

Select a timeout value to be configured to the device from the display timeout list provided from the dropdown:

15 seconds, 30 seconds, 1 minute, 2 minutes, 5 minutes, 10 minutes, 30 minutes.

Value

10 minutes

Accelerometer Rotation

Accelerometer Rotation controls the rotation of the screen of the device to portrait mode or landscape mode.

You need to set the value for 'Full Accelerometer Rotation' setting to "Do not Allow" to make changes in this setting.

Note: This setting is not applicable for VM1A.

Select a desired option to be configured from the drop-down list box provided.

Reboot the device to apply the changes.

The setting has two options:

- **Stay In Portrait View**
- **Allow Accelerometer Rotation**

Value

Stay in Portrait View

Full Accelerometer Rotation

This setting is used to enable or disable Full Accelerometer Rotation on the device.

You need to set the value for 'Accelerometer Rotation' setting to "Allow Accelerometer Rotation" to make changes in this setting.

Note: This setting is not applicable for VM1A.

Select a desired option to be configured from the drop-down list box provided. Reboot the device to apply the changes.

The setting has two options:

- **Allow** will enable Full Accelerometer Rotation on the device.
- **Do not Allow** will disable Full Accelerometer Rotation on the device.

Show Rotation Suggestions: Enable/Disable Show rotation suggestions.

Value

Allow

User Selected Rotation

This setting is used to set a custom rotation for the display.

To use this setting, you need to set the value for the 'Accelerometer Rotation' setting to 0.

Select a desired option from the drop-down list box provided. Reboot the device to apply the changes.

The setting has four options:

- 0: 0 degrees
- 1: 90 degrees
- 2: 180 degrees
- 3: 270 degrees

Value

0 degrees

Density Smallest Width

This setting allows you to set the smallest width for density on the device. This value should be more than 0.

Font Size

In the font size list, select the required font size to be configured to the device from the drop-down list box provided.

The setting has four options:

- **Small**
- **Normal**
- **Large**
- **Huge**

Value

Normal

Enable WiFi Display

WiFi Display is a technology to display a device's content to another device over WiFi.

This setting is used to enable or disable WiFi Display option on the device.

Select a desired option from the drop-down list box provided.

The setting has two options:

- **Enable** will activate the WiFi Display option on the device.
- **Disable** will deactivate the WiFi Display option on the device.

Value

Enable

Wallpaper

This setting allows the user to set a desired wallpaper on the device.

You can type the path of the wallpaper in the text box provided.

Value

/data/system/users/0

Clear Wallpaper

Set 1 to set default wallpaper.

(Applicable for Android 8, 9, 11)

Screen Dim Timeout

The amount of time in milliseconds (ms) before the screen starts to dim. Select a value from the drop-down list:

- -1 (Use default Android behavior), 0 (Do not dim), 15000, 30000, 60000, 120000, 300000, 600000, 900000

Default: -1

Note: Screen Dim Timeout should always be smaller than Screen off Timeout. If Screen Dim Timeout is larger than Screen off Timeout, it will use the Android default behavior.

(Applicable for Android 10 and higher. Not applicable for VMA devices.)

On Charge Screen Off Timeout

The amount of time in milliseconds (ms) before the screen turns off when the device is put on charge.

Select a value from the drop-down list:

- -1 (Use default Android behavior), 15000, 30000, 60000, 120000, 600000, 1800000

Default: -1

(Applicable for Hon6490 with Android 12 and higher. Applicable for all devices with Android 13 and higher.)

Hide System UI Navigation button

Select Normal (Unhidden), Hide Navigation bar (Visible on Swipe Gesture), or Aggressive Hide Navigation bar (Permanent Hide).

Default: Normal (Unhidden)

(Applicable for Android 9 and higher)

Enable Android Splitscreen

Enable or Disable Android SplitScreen: 0=Disable, 1=Enable.

Default: 1 = Enable

(Applicable for Android 9, 10, 11)

Enable Clipboard

Enable or Disable Android Clipboard. 0=Disable, 1=Enable.

Default: 1 = Enable

Enable Android Clipboard Share

Enable or Disable Android Clipboard Share , 0=Disable, 1=Enable.

Default: 1 = Enable

Block Installation of Packages

Enter package names in the text box to block installation of packages. To block multiple packages separate with a colon like com.org.app1:com.org.app2.

Set to 0 to not block installation of packages.

Default: 0

(Applicable for Android 10, 11, 12)

Enable Home Longpress

Enable or Disable Home longpress. 0=Disable home longpress, 1=Enable home longpress.

Default: 1 = Enable

(Applicable for Android 10, 11)

Lock Screen Accordance Size

Set the size of apps shown on the lock screen: 0=Small, 1=Medium, 2=Big.

Default: 0 = Small

Lock Screen Accordance Left

Set all apps shown on the left side of the lock screen: 0=Disabled, 1=Phone app, 2=Google Assistant.

Default: 0 = Disabled

Lock Screen Accordance Right

Set all apps shown on the right side of the lock screen: 0=Disabled, 1=Camera

Default: 0 = Disabled

Hide VoLTE icon and notification

Enable to hide Voice over LTE (VoLTE) icon on the status bar and notifications related to VoLTE. 0=Disabled, 1=Enable

Default: 0 = Disabled

Note: Applicable for CT47 mobile computer only.

Daydream

Enable Screensaver

This setting allows the user to enable or disable the Screensaver option on the device.

Select a desired option from the drop-down list box provided.

The setting has two options:

- **Enable** will activate the Screensaver option on the device.
- **Disable** will deactivate the Screensaver option on the device.

Value

Enable

Screensaver Components

This setting allows the user to select a desired Screensaver Component on the device.

Select a desired option from the drop-down list box provided.

The setting has five options:

- **Clock**
- **Colors**
- **Photo Frame**
- **Photo Table**
- **Photo**

Note: Photo Frame and Photo Table options are not applicable for Hon4290 devices.

Value

Clock

Display Dock Settings

Display Dock Orientation Portrait

Enables or disables portrait orientation for display dock.

Default: 0 = Disabled

(Applicable for CT40 and CT45)

Display Dock Mode Primary

Enables or disables primary mode for display dock.

Default: 1 = Enabled

(Applicable for CT40 and CT45)

Display Dock Mode Hdmiaudio

Enables or disables Hdmiaudio mode for display dock.

Default: 0 = Disabled

(Applicable for CT40 and CT45)

Display Dock Mode Resolution

Set Resolution: 0 = 1920x1080, 1 = 1280x720, 2 = 1366x768.

Default: 0

(Applicable for CT40 and CT45)

Display Dock Mode Density

Set density for display dock: 0 = 160, 1 = 240, 2 = 320, 3 = 400, 4 = 480.

Default: 2

(Applicable for CT40 and CT45)

Display Dock Mode Resolution Width

Set resolution width (Default: 1920) for display dock. (Applicable for Android 8, 9)

Default: 1 = Enabled (Default: 1920)

Display Dock Mode Resolution Height

Set resolution height (Default: 1080) for display dock. (Applicable for Android 8, 9)

Default: 1 = Enabled

Display Dock Mouse Right Back

Enables or disables mouse right back.

Default: 1 = Enabled

(Applicable for CT40 and CT45)

Allow Manual Override of USB Keyboard Layout

Allow manual override of USB keyboard layout.

Default: 0 = Disabled

(Applicable for Android 10 and higher)

USB Keyboard Layout

Set the USB keyboard layout, for example, "German" or "French (Canada)".

Default: English (US)

(Applicable for Android 9 and higher)

LED Settings

Battery LED Mode

To select a Battery LED mode, click on the desired option to be configured to the device from the list.

The setting has four options:

- **0** = Default Battery LED
- **1** = HSM Battery LED
- **2** = No Battery LED
- **3** = Custom Battery LED (for RT10A tablet only; Android 9 and higher only)

Use this setting for displaying different color LED's when the device is put to charge or in low battery.

Value

1

Battery Led Mix Mode

Enable or disable Battery LED mix mode.

The setting has two options:

- **0** = Disable Led Mix Mode
- **1** = Enable LED Mix Mode

Value

0

Power LED

Enable or Disable Power LED.

The setting has two options:

- **0** = Disable Power LED
- **1** = Enable Power LED (Default)

(Applicable for RT10A rugged tablet only. Applicable on Android 9 and higher.)

Wi-Fi LED

Enable or Disable Wi-Fi LED.

The setting has two options:

- **0** = Disable Wi-Fi LED
- **1** = Enable Wi-Fi LED (Default)

(Applicable for RT10A rugged tablet only. Applicable on Android 9 and higher.)

Link LED

Enable or Disable Link LED.

The setting has two options:

- **0** = Disable Link LED
- **1** = Enable Link LED (Default)

(Applicable for RT10A rugged tablet only. Applicable on Android 9 and higher.)

Key Remap and Wakeup Settings

Ignore keyRemap to PTT

Ignore mapping a key to PTT or HEADSETPTT if the device has a dedicated PTT (Push-to-Talk) button. 1 to ignore or 0 to not ignore.

Default = 0

(Applicable for Android 11 and higher)

Key Remap Settings

This setting enables the user to configure the physical keys on the device to different functions and other behaviors.

You must specify the mapping behaviors to be mapped to the identified physical key. If any prior mappings were applied, they will be replaced by the new specified behaviors.

The added key_names can be obtained from keyremap UI on the device.

This setting allows two types of key mapping on the device:

- The old key can be mapped to new key.
- The old key can be mapped to an application.

Value

To remap a single physical key on the device, provide the physical key name and specify the value of new key or application to be configured.

Example 1: RightScan-ENTER

Example 2: LeftScan-com.honeywell.demos.scandemo

The physical key RightScan is mapped to the Enter function on the device and the key LeftScan is mapped to an application.

To remap multiple physical keys on the device, use colon(:) in between each key remap.

For example: RightScan-ENTER:LeftScan-com.honeywell.demos.scandemo

Wakeup Key Settings

This setting allows the user to configure the Key wakeup sequence on the device.

To enable a Wakeup Key sequence on the device, enter a desired value in the text box provided.

The setting has two options to configure the sequence:

- **0** = Disabled
- **1** = Enabled

Value

1000, 1010, 1001

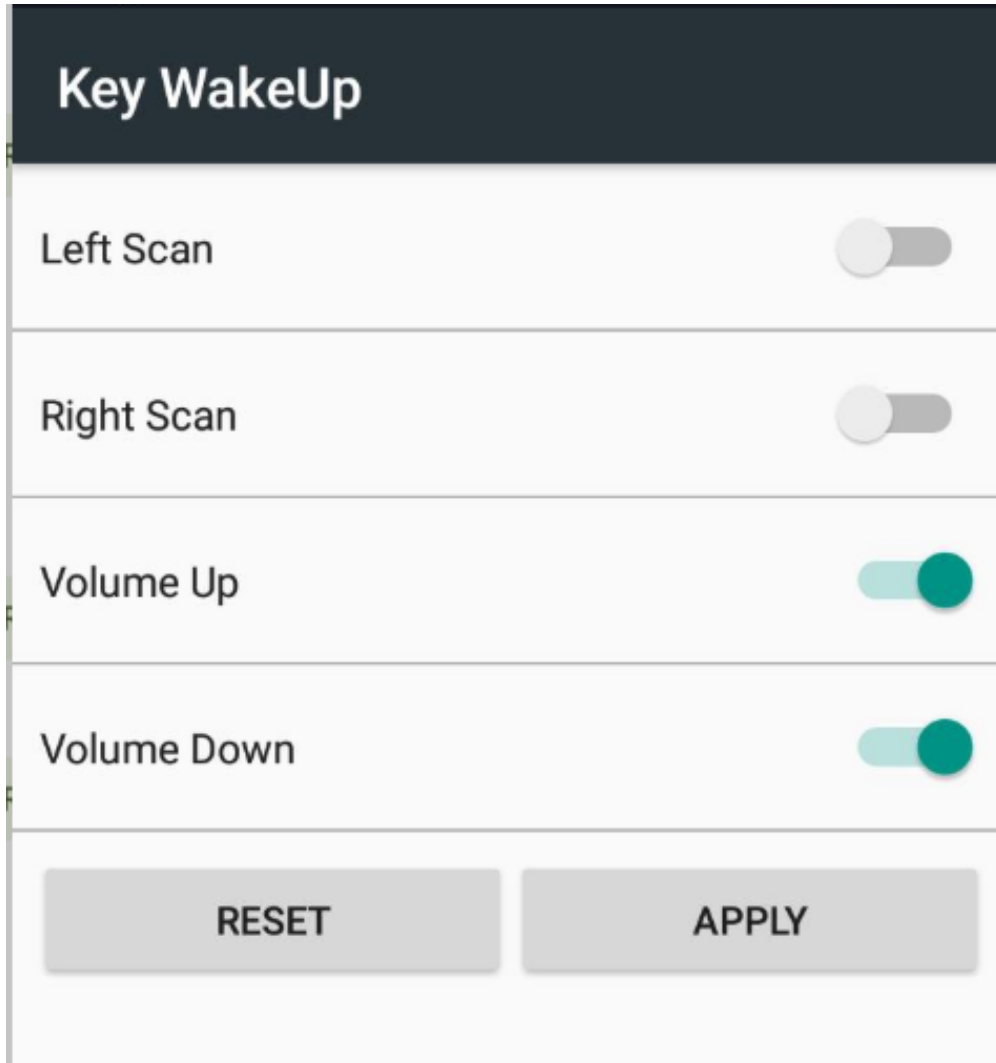
For example: The model CT40 has four Key sequences as Wakeup keys, i.e., 257, 261, 115 and 114.

If the value of the setting is set to **1000**, then only the first key sequence, i.e., 257, will behave as the wakeup key and the other three keys, i.e., 261, 115 and 114, will not work as wakeup keys.

Note: The number of Wakeup Keys that can be set for a device is specific to the device and differs from one to another.

For Example:

On a CT40 device: If this setting is set to 0011, this will Disable Left Scan, Right Scan and Enable Volume Up and Volume Down as below.



(Not applicable for VM1A devices)

Clear All Key Remap Settings

This setting allows the user to clear all existing key mappings on the device.

To enable or disable the Clear All Key Remap Settings, select a desired option from the drop-down list box provided.

- **Enable** will activate the Clear All Key Remap Settings on the device.
- **Disable** will deactivate the Clear All Key Remap Settings on the device.

Value

Enable

KeyRemap to Intent

Remap a key to an intent or broadcast. For example, to start an Intent, enter `com.android.settings/com.android.settings.wifi.WifiSettings`.

(Applicable for Android 8 and higher)

Sticky (Keys) Options

This setting makes yellow/orange, blue/green, and caps key sticky after one key press.

Select a desired option to be configured to the device using the drop-down list box provided.

Value

[caps:disable, blue/green:disable, yellow/orange:disable]
[caps:disable, blue/green:disable, yellow/orange:enable]
[caps:disable, blue/green:enable, yellow/orange:disable]
[caps:disable, blue/green:enable, yellow/orange:enable]
[caps:enable, blue/green:disable, yellow/orange:disable]
[caps:enable, blue/green:disable, yellow/orange:enable]
[caps:enable, blue/green:enable, yellow/orange:disable]
[caps:enable, blue/green:enable, yellow/orange:enable]

Touch Settings

Touch Panel Mode

The setting allows the user to select the touch panel mode to be configured to the device.

The setting has four options:

- **0** = Default
- **1** = Stylus enhanced
- **2** = Glove use enhanced
- **3** = Touch enhanced

Value

1

Storage Settings

SD Card Access Enabled

This setting is used to allow or restrict the SD Card access on the device.

Select a desired option to be configured to the device from the drop-down list box provided.

The setting has two options:

- **Enable** will allow the SD Card access on the device.
- **Disable** will restrict the SD Card access on the device.

Value

Enable

USB Settings

Lock USB Mode

This setting is used to lock USB Mode for a particular functionality on the device.

Select a desired option to be configured to the device from the drop-down list box provided.

The setting has four options:

- **Not Locked**
- **Lock USB Charging**
- **Lock USB MTP**
- **Lock USB PTP**

Value

Not Locked

Disable USB Pop Up

This setting is used to enable a customer application to access a USB port without prompting the user.

Enable USB Pop Up

Set Disable to disable the USB pop-up or Enable to allow it.

Value

Enable

(Applicable for Android 10 and higher)

Heater Settings

Use these settings to set the heater configurations of the device.

Enable Heater

Select whether to enable the Heater or not.

The setting has two options:

- **Enable** will allow the Heater access on the device.
- **Disable** will restrict the Heater access on the device.

Value

Enable

DeltaT

This setting is used to determine how many degrees of temperature must change before the heater is allowed to turn on.

Switch on the heater when the temperature has changed by 0.5, (0.5 ~ 5.0), for each step from 0.5.

Value

0.5

EnableT

The Enable Temperature is the setting that determines when the heater is turned on as it rises above the set value.

Set the temperature at which the heater should get enabled, Range: -20 ~ 0, 1 for each step.

Value

-20

DisableT

Set the temperature at which the heater should get disabled. Range: 10 ~ 30, 1 for each step.

If the ambient temperature exceeds the Disable Temperature when the heater is switched on, then the heater must be turned off and the driver must switch to the slow sampling.

Disable temperature, 10 ~ 30, 1 for each step.

Value

20

DurationHeater

This is the amount of time that the heater will stay on once the heater has been enabled.

The heater remains at 100% power unless the user switches it off by tapping on the heater icon or presses the Disable Heater Hotkey or the temperature reading indicates that the device is warm enough.

This setting can be set from 1 to 10 minutes.

Value

5 min

SampleTimes

This is the number of DeltaT temperature samples that are taken to determine if the heater should be activated.

Set the Sample Window. Range: 3 ~ 10, 1 for each step.

Value

10

SlowInterval

The heater driver will monitor the ambient temperature using slow or fast sampling interval or the heater on mode.

The heater must start by using the Slow Sampling Interval. During slow sampling, when the ambient temperature falls below the Enable Temperature, the driver must be switched to the Fast Sampling Interval and start the Chill Time.

Set the slow monitoring interval (minutes). Range: 1 ~ 10, 1 for each step.

Value

3 min

FastInterval

During slow sampling, when the ambient temperature falls below the Enable Temperature, then the driver must switch to the Fast Sampling Interval and start the Chill Time.

During fast sampling, the heater driver must request the device to be in unattended mode instead of suspend. This is because the sample interval may be less than the suspend or resume time. When the device goes to unattended mode, the display must remain off but the sampling will continue.

While in fast sampling after the Chill time expires, if the rise in ambient temperature over an interval exceeds Delta T, the heater must be turned on and the Heater Duration shall be started.

Value

2 sec

ChillTime

This setting is to ensure that the device is really cold enough for the heaters to be turned on.

The Chill Time temperature must remain same or below the Enable Temperature for the heaters to turn on. This is used to save the battery if the user is in the freezer for brief periods of time.

Once the device is in the freezer for the Chill Time (if any), a cold storage icon will appear on the task bar. The icon displayed will be either the snowflake or the heater symbol. One of the icons will be present for remaining time in the freezer.

The snowflake icon indicates that the device is cold enough to need defrosting. The heater icon indicates that the heaters are currently on (regardless of how or when it was turned on).

Chill time (minutes), 1 ~ 60, 1 for each step.

This setting can be set from 0 – 60 minutes.

Value

5 min

DurationLcd(s)

When the heaters are switched on, they alternate between heating the LCD display and heating the Scan Window.

Running both scanner heater element and LCD heater elements simultaneously can put the system at risk of browning out. To prevent this, the driver will alternatively enable the scanner heater element or the LCD heater element.

The scanner heater element and LCD heater element will have different programmable durations.

Duration: LCD heater (seconds), 5 ~ 60, 5 seconds for each step.

Value

10 sec

DurationScan

When the heaters are switched on, they alternate between heating the LCD display and heating the Scan Window.

Running both scanner heater element and LCD heater elements simultaneously can put the system at risk of browning out. To prevent this, the driver will alternatively enable the scanner heater element or the LCD heater element.

The scanner heater element and LCD heater element will have different programmable durations.

Duration: Scanner heater (seconds), 5 ~ 60, 5 seconds for each step.

Value

20 sec

LowBatteryPercent

The low battery threshold will force the heater to be turned off if the battery level drops below the set value in the utility.

Low battery threshold (%), 5 ~ 75, 5 for each step.

Value

25%

Power on time

Set Power on time (ms). Range: 0 ~ 50, 10 for each step and 50 ~ 750, 50 for each step.

Value

10 ms

Preemptive

This setting allows the user to enable or disable Preemptive Heating on the device.

This setting has two options:

- **Enable (1)** - Preemptive Delay Timer is used.
- **Disable (0)** - Preemptive Delay Timer is not used and preemptive heating is not automatically started.

It starts when the Chill Time expires (if any). While the Preemptive Delay Timer is running, the snowflake icon is displayed.

When the Preemptive Delay Timer expires, the heaters are turned on at the Preemptive Mode Duty Cycle, and the snowflake icon is replaced by the heater icon.

The device must stay in preemptive mode until a freezer exit is detected. The Duty Cycle allows the user to reduce the battery used while in preemptive mode.

The Preemptive Delay Timer allows the user to save battery during automatic pre-heating. If the user is typically in the freezer for 30 minutes at a time, then the Preemptive Delay Timer must be set to around 25 minutes.

When the heaters are switched on, it alternates between heating the display and heating the scan window.

To detect the freezer exit, it looks for a quick rise in temperature delta over a brief period of time.

This value can be adjusted to make it more or less sensitive.

Value

Disable

PreemptiveDelay

This setting allows the user to enable or disable Preemptive Delay on the device.

This setting has two options:

- **Enable (1)** - Preemptive Delay Timer is used.
- **Disable (0)** - Preemptive Delay Timer is not used and preemptive heating is not automatically started.

It starts when the Chill Time expires (if any). While the Preemptive Delay Timer is running, the snowflake icon is displayed.

When the Preemptive Delay Timer expires, the heaters are turned on at the Preemptive Mode Duty Cycle, and the snowflake icon is replaced by the heater icon.

The device must stay in preemptive mode until a freezer exit is detected. The Duty Cycle allows the user to reduce the battery used while in preemptive mode.

The Preemptive Delay Timer allows the user to save battery while still getting automatic pre-heating. If the user is typically in the freezer for 30 minutes at a time, then the Preemptive Delay Timer must be set to around 25 minutes.

When the heaters are switched on, it alternates between heating the display and heating the scan window.

To detect the freezer exit, it looks for a quick rise in temperature delta over a brief period of time.

This value can be adjusted to make it more or less sensitive.

Preemptive Delay (min), 0 ~ 240, 10 min for each step.

Value

30 min

PreemptiveDuty

The Duty Cycle allows the user to reduce the battery used while in preemptive mode.

This is performed by allowing the heater to reduce the duty time that is turned on.

Set Preemptive Duty_cycle (%). Range: 10 ~ 100, 10 for each step.

Value

50%

DriverMode

This setting is used to set Manual or Automatic mode.

This setting has two options:

- **Manual (1)** - Manual mode requires keys to be mapped to enable and disable the heater via a keypress.
- **Automatic (0)** - Automatic mode will monitor the temperature values to enable and disable the heater automatically.

Automatic mode can be used optionally for Preemptive Mode to pre-heat the LCD and scan window.

Value

Manual

KeyBlanking

This setting allows the user to enable or disable KeyBlanking on the device.

This setting has two options:

- **Enable (1)**
- **Disable (0)**

When a barcode scan is performed, the heater must be “blanked” for the duration of the scan to avoid a possible brown out condition.

The scanner driver must initiate a handshake before it turns on the scan illumination.

The heater driver must acknowledge the handshake and turn off the heater if it is currently on. The heater driver must prevent turning the heater to on until the end of scan handshake is received or one minute elapses.

Value

Enable

Defroster Settings

Enable Defroster

This setting allows the user to enable or disable the Defroster Setting on the device.

Note: Defroster Setting is applicable only for VM1A.

Select a desired option to be configured to the device from the drop-down list box provided.

The setting has two options:

- **Enable**
- **Disable**

Value

Enable

Defroster Trip Point

This setting is used to set the Defroster Trip Point value on the device.

The supported values from device config ranges between -10 and 50.

Note: Defroster Trip Point Setting is applicable only for VM1A.

You can type a desired Defroster Trip Point value in the text box provided.

Value

0

Defroster Operation Mode

This setting is used to set Defroster Operation Mode on the device.

Note: Defroster Operation Mode Setting is applicable only for VM1A.

Select a desired option to be configured to the device from the drop-down list box provided.

The setting has two options:

- **Automatic**
- **Manual**

Value

Manual

Defroster State

This setting is used to set Defroster State on the device.

Note: Defroster State is applicable only for VM1A.

Note: This setting can be applied only when Defroster Mode is in Manual mode; For Automatic mode, the State will be always OFF.

Select the desired option to be configured to the device from the drop-down list box provided.

The setting has two options:

- **0** = OFF
- **1** = ON

Value

1

Vehicle Dock Settings

VDock Mode

This setting is used to set the VDock Mode on the device.

Select the desired option to be configured to the device from the drop-down list box provided.

The setting has two options:

- **VDock Mode**
- **Scan Handle Mode**

Value

VDock Mode

DEVICE MANAGEMENT SETTINGS

Honeywell Launcher Placeholder

HLPH Password

This setting is used to provide password for HLPH Password on the device. The correct HLPH password grants access to the device following a reboot. You can type the HLPH password in the text box provided.

Note: The HLPH password supports up to Android 10.

Value

SampleHLPH#1

Clear HLPH Password

This setting allows the user to enable or disable Clear HLPH Password option on the device.

Select a desired option to be configured to the device from the drop-down list box provided.

The setting has two options:

- **Enable** will activate the Clear HLPH Password on the device.
- **Disable** will deactivate the Clear HLPH Password on the device.

Value

Disable

Auto Install Settings

Auto Install

This setting allows the device to automatically install the applications without user interference.

Select a desired option to be configured to the device from the drop-down list box provided.

The setting has two options:

- **Enable** will allow the Auto Install function on the device.
- **Disable** will disallow the Auto Install function on the device.

Value

Disabled

Auto Install Notification

This setting allows the user to enable or disable Auto Install Notifications on the device.

Select a desired option to be configured to the device from the drop-down list box provided.

The setting has two options:

- **Enable** will activate the Auto Install Notifications on the device.
- **Disable** will deactivate the Auto Install Notifications on the device.

Value

Enable

Auto Install Upgrade UI

This setting allows the user to enable or disable the Auto Install OTA pop-up.

Value

Enable

(Applicable for Android 11)

EZConfig Settings

Enable User Password

This setting is used to enable password protection for the EZConfig.

Select a desired option to be configured to the device from the drop-down list box provided.

The setting has two options:

- **Enable** will enable the User Password option for EZConfig.
- **Disable** will disable the User Password option for EZConfig.

Value

Disabled

User Password

This setting is used to provide the password for encrypting the EZConfig Barcode.

Note: The same password must be provided while generating the EZConfig Barcode as well.

You can type a desired user password in the text box provided.

Value

EZconfig#1

Honeywell Provisioning Mode Settings

Provisioning Mode

Provisioning mode is set when provisioning configurations have unrestricted access.

Note: The Provisioning Mode will be 'Off' by default, but it can be turned 'On' manually in the settings.

Select the Provisioning Mode to be configured to the device.

The setting has three options:

- **Auto**
- **Always Enabled**
- **Always Disabled**

Value

Auto

Clear Provision Password

Enable to clear the Provisioning mode password.

Value

0 - Disable

(Applicable for Android 8 and higher)

Provisioning Mode Password Settings

By providing the Provisioning Mode Password, the user will be prompted to enable the Provisioning Mode.

You can type a desired provisioning mode password in the text box provided.

Value

Provisionpassword#1

Provisioning Mode Whitelist Applications

This setting enables the user to add the package names to the provisioning mode white list. The whitelisted packages will have continuous access to Honeywell Provisioning folders.

Use comma (,) to separate multiple entries.

Note: A maximum of three packages can be whitelisted at a time.

Use the text box provided to enter the package names.

Value

org.example.demo

Provisioning Intents Unrestricted

This setting allows the user to enable or disable the Provisioning Intents Unrestricted option on the device.

Select a desired option to be configured to the device from the drop-down list box provided.

The setting has two options:

- **Enable** will enable the Provisioning Intents Unrestricted setting on the device.
- **Disable** will disable the Provisioning Intents Unrestricted setting on the device.

Value

Enable

Honeywell Restriction Settings

Restrictions - Emergency Settings:

Hide Emergency Button

This setting allows the user to hide or show the Emergency Button on the device.

Select a desired option to be configured to the device from the drop-down list box provided.

The setting has two options:

- **Yes** will hide the Emergency Button on the device.
- **No** will show the Emergency Button on the device.

Value

Yes

Disable Emergency Alerts

This setting allows the user to enable or disable the Emergency Alerts on the device.

Select a desired option to be configured to the device from the drop-down list box provided.

The setting has two options:

- **Enable** will allow the Emergency Alerts on the device.
- **Disable** will disallow the Emergency Alerts on the device.

Value

Enable

Disable Amber Alerts

This setting allows the user to enable or disable the Amber Alerts on the device.

Select a desired option to be configured to the device from the drop-down list box provided.

The setting has two options:

- **Enable** will allow the Amber Alerts on the device.
- **Disable** will disallow the Amber Alerts on the device.

Value

Enable

Disable Extreme Alerts

This setting allows the user to enable or disable the Extreme Alerts on the device.

Select a desired option to be configured to the device from the drop-down list box provided.

The setting has two options:

- **Enable** will allow the Extreme Alerts on the device.
- **Disable** will disallow the Extreme Alerts on the device.

Value

Enable

Disable Severe Alerts

This setting allows the user to enable or disable the Severe Alerts on the device.

Select a desired option to be configured to the device from the drop-down list box provided.

The setting has two options:

- **Enable** will allow the Severe Alerts on the device.
- **Disable** will disallow the Severe Alerts on the device.

Value

Enable

Enable Test Alerts

This setting allows the user to enable or disable the Test Alerts on the device.

The setting has two options:

- **Enable** will allow the Test Alerts on the device.
- **Disable** will disallow the Test Alerts on the device.

Value

Disable

(Applicable for Android 11 and higher; not applicable for Hon660)

Restrictions - Network Settings

Restrict Network Location Provider

Network Location Provider allows the user to determine the location of the device by using the mobile connectivity.

This setting provides option to enable or disable the Restrict Network Location Provider setting on the device.

Select a desired option to be configured to the device from the drop-down list box provided. The setting has two options:

- **Enable** will activate the Restrict Network Location Provider setting on the device.
- **Disable** will deactivate the Restrict Network Location Provider setting on the device.

Value

Enable.

Selecting Enable will activate the Restrict Network Location Provider setting, i.e., Network Location Provider option will be restricted (inaccessible to user) and Disable will do the opposite.

Restrict Roaming Data

Roaming Data controls the accessibility to data usage on the device outside the registered region.

This setting provides option to enable or disable Restrict Roaming Data setting on the device.

Select a desired option to be configured to the device from the drop-down list box provided.

The setting has two options:

- **Enable** will activate the Restrict Roaming Data on the device.
- **Disable** will deactivate the Restrict Notification LED on the device.

Value

Enable.

Selecting Enable will activate the Restrict Roaming Data setting, i.e., Roaming Data will be restricted (inaccessible to user) and Disable will do the opposite.

Restrictions - Notification Settings

Restrict Cacert Notification

This setting provides option to enable or disable Restrict Cacert Notification on the device.

Select a desired option to be configured to the device from the drop-down list box provided.

The setting has two options:

- **Enable** will activate the Restrict Cacert Notification on the device.
- **Disable** will deactivate the Restrict Cacert Notification on the device.

Value

Enable

Selecting Enable will activate the Restrict Cacert Notification, i.e., Cacert Notification option will be restricted (inaccessible to user) and Disable will do the opposite.

Restrict Notification LED

Notification LED allows or restricts the LED notification pop-up on the device.

This setting provides option to enable or disable Restrict Notification LED on the device.

Select a desired option to be configured to the device from the drop-down list box provided.

The setting has two options:

- **Enable** will activate the Restrict Notification LED on the device.
- **Disable** will deactivate the Restrict Notification LED on the device.

Value

Enable

Selecting Enable will activate the Restrict Notification LED, i.e., Notification LED option will be restricted (inaccessible to user) and Disable will do the opposite.

Restrict System Notification

This setting provides option to allow or restrict the System Notifications on the device.

Select a desired option to be configured to the device from the drop-down list box provided.

The setting has two options:

- **Enable** will allow the System Notifications on the device.
- **Disable** will restrict the System Notifications on the device.

Value

Enable

Restrictions - Quick Menu Settings

Hide WiFi

This setting is used to configure the device to allow or restrict the WiFi option in the Quick Settings menu.

Select a desired option to be configured to the device from the drop-down list box provided.

The setting has two options:

- **Enable** will activate the Hide WiFi option in the Quick Settings menu.
- **Disable** will deactivate the Hide WiFi option in the Quick Settings menu.

Value

Enable

Selecting Enable will activate the Hide WiFi, i.e., WiFi will be restricted (inaccessible to user) in the Quick Settings menu and Disable will do the opposite.

Hide Bluetooth

This setting is used to configure the device to allow or restrict the Bluetooth option in the Quick Settings menu.

Select a desired option to be configured to the device from the drop-down list box provided.

The setting has two options:

- **Enable** will activate the Hide Bluetooth option in the Quick Settings menu.
- **Disable** will deactivate the Hide Bluetooth option in the Quick Settings menu.

Value

Enable

Selecting Enable will activate the Hide Bluetooth, i.e., Bluetooth will be restricted in the Quick Settings menu (inaccessible to user) and Disable will do the opposite.

Hide Do Not Disturb

This setting is used to configure the device to allow or restrict the Do Not Disturb option in the Quick Settings menu.

Select a desired option to be configured to the device from the drop-down list box provided.

The setting has two options:

- **Enable** will activate the Hide Do Not Disturb option in the Quick Settings menu.
- **Disable** will deactivate the Hide Do Not Disturb option in the Quick Settings menu.

Value

Enable

Selecting Enable will activate the Hide Do Not Disturb, i.e., Do Not Disturb setting will be restricted in the Quick Settings menu (inaccessible to user) and Disable will do the opposite.

Hide Cellular

This setting is used to configure the device to allow or restrict the Cell Settings in the Quick Settings menu.

Select a desired option to be configured to the device from the drop-down list box provided.

The setting has two options:

- **Enable** will activate the Hide Cellular option in the Quick Settings menu.
- **Disable** will deactivate the Hide Cellular option in the Quick Settings menu.

Value

Enable

Selecting Enable will activate the Hide Cellular, i.e., Cellular setting will be restricted in the Quick Settings menu (inaccessible to user) and Disable will do the opposite.

Hide Airplane Mode

This setting is used to configure the device to allow or restrict the Airplane Mode option in the Quick Settings menu.

Select a desired option to be configured to the device from the drop-down list box provided.

The setting has two options:

- **Enable** will activate the Hide Airplane Mode in the Quick Settings menu.
- **Disable** will deactivate the Hide Airplane Mode in the Quick Settings menu.

Value

Enable

Selecting Enable will activate the Hide Airplane Mode, i.e., Airplane Mode will be restricted in the Quick Settings menu (inaccessible to user) and Disable will do the opposite.

Hide Auto Rotate

This setting is used to configure the device to allow or restrict the Auto Rotate option in the Quick Settings menu.

Select a desired option to be configured to the device from the drop-down list box provided.

The setting has two options:

- **Enable** will activate the Hide Auto Rotate in the Quick Settings menu.
- **Disable** will deactivate the Hide Auto Rotate in the Quick Settings menu.

Value

Enable

Selecting Enable will activate the Hide Auto Rotate, i.e., Auto Rotate will be restricted in the Quick Settings menu (inaccessible to user) and Disable will do the opposite.

Hide Flashlight

This setting is used to configure the device to allow or restrict the Flashlight option in the Quick Settings menu.

Select a desired option to be configured to the device from the drop-down list box provided.

The setting has two options:

- **Enable** will activate the Hide Flashlight in the Quick Settings menu.
- **Disable** will deactivate the Hide Flashlight in the Quick Settings menu.

Value

Enable

Selecting Enable will activate the Hide Flashlight setting, i.e., Flashlight setting will be restricted in the Quick Settings menu (inaccessible to user) and Disable will do the opposite.

Hide Location

This setting is used to configure the device to allow or restrict the Device Location option in the Quick Settings menu.

Select a desired option to be configured to the device from the drop-down list box provided.

The setting has two options:

- **Enable** will activate the Hide Location in the Quick Settings menu.
- **Disable** will deactivate the Hide Location in the Quick Settings menu.

Value

Enable

Selecting Enable will activate the Hide Location setting, i.e., Device Location will be restricted in the Quick Settings menu (inaccessible to user) and Disable will do the opposite.

Hide Cast

This setting is used to configure the device to allow or restrict the Cast Setting in the Quick Settings menu.

Select a desired option to be configured to the device from the drop-down list box provided.

The setting has two options:

- **Enable** will activate the Hide Cast in the Quick Settings menu.
- **Disable** will deactivate the Hide Cast in the Quick Settings menu.

Value

Enable

Selecting Enable will activate the Hide Cast setting, i.e., Cast setting will be restricted in the Quick Settings menu (inaccessible to user) and Disable will do the opposite.

Restrict Settings

This setting is used to configure the device to allow or restrict the Restrict Settings icon in the Quick Settings menu.

Select a desired option to be configured to the device from the drop-down list box provided.

The setting has two options:

- **Enable** will activate the Restrict Settings in the Quick Settings menu.
- **Disable** will deactivate the Restrict Settings in the Quick Settings menu.

Value

Enable Selecting Enable will activate the Restrict Settings, i.e., Settings option will be restricted in the Quick Settings menu (inaccessible to user) and Disable will do the opposite.

Restrict Battery

This setting is used to configure the device to allow or restrict the Restrict Battery Settings in the Quick Settings menu.

Select a desired option to be configured to the device from the drop-down list box provided.

The setting has two options:

- **Enable** will activate the Restrict Battery setting in the Quick Settings menu.
- **Disable** will deactivate the Restrict Battery setting in the Quick Settings menu.

Value

Enable

Selecting Enable will activate the Restrict Battery setting, i.e., Battery option will be restricted in the Quick Settings menu (inaccessible to user) and Disable will do the opposite.

Restrict Multi-User

This setting is used to configure the device to allow or restrict the Multi-User Settings in the Quick Settings menu.

Select a desired option to be configured to the device from the drop-down list box provided.

The setting has two options:

- **Enable** will activate the Restrict Multi-User in the Quick Settings menu.
- **Disable** will deactivate the Restrict Multi-User in the Quick Settings menu.

Value

Enable

Selecting Enable will activate the Restrict Multi-User, i.e., Multi-User option will be restricted in the Quick Settings menu (inaccessible to user) and Disable will do the opposite.

Restrictions - Storage Settings

Restrict SD Card Access

This setting provides option to enable or disable Restrict SD Card Access on the device.

Select a desired option to be configured to the device from the drop-down list box provided.

The setting has two options:

- **Enable** will activate the Restrict SD Card Access on the device.
- **Disable** will deactivate the Restrict SD Card Access on the device.

Value

Enable

Selecting Enable will activate the Restrict SD Card Access, i.e., SD Card Access will be restricted (inaccessible to user) and Disable will do the opposite.

Restrictions - MDM Settings

Restrict Factory Reset in Boot Menu

This setting provides option to enable or disable provision of Restrict Factory Reset in boot menu.

Note: Restrict Factory Reset in Boot Menu is supported on Android 8 and higher.

Select a desired option to be configured to the device from the drop-down list box provided.

The setting has two options:

- **Enable** will show the Factory Reset option in boot menu.
- **Disable** will hide the Factory Reset option in boot menu.

Value

Enable

Disable Factory Data Reset

Select 1 to disable factory data reset. Select 0 to enable it.

Value

Enable

(Applicable for Android 8 and higher)

Disable Recovery Keychords Policy

Enable or disable recovery keychords policy.

Value

Disable

(Applicable for Android 8 and higher)

SD card access enabled

Enable or disable SD card mount.

Value

Disable

(Applicable for Android 8 and higher)

Disable Android Share Option

This setting provides option to allow or disallow Android Share option on the device.

Note: This setting is applicable only for CN80G.

Select a desired option to be configured to the device from the drop-down list box provided.

The setting has two options:

- **Enable** will allow Android Share option on the device.
- **Disable** will disallow Android Share option on the device.

Value

Enable

Restrict Clipboard

This setting allows the user to enable or disable Clipboard on the device.

Select a desired option to be configured to the device from the drop-down list box provided.

The setting has two options:

- **Enable** will allow Clipboard on the device.
- **Disable** will disallow Clipboard on the device.

Value

Enable

Restrict Guest User

This setting allows the user to enable or disable Guest User on the device.

Select a desired option to be configured to the device from the drop-down list box provided.

The setting has two options:

- **Enable** will allow Guest User on the device.
- **Disable** will disallow Guest User on the device.

Value

Enable

App Install Whitelist

Package name domains whitelist.

Example: "org.chromium.chrome,com.honeywell.systemtool".

(Not applicable for Android 7.)

App Install Blacklist

Package name domains blacklist.

Example: "com.qualcomm.svi,com.redbend.app"

(Not applicable for Android 7.)

App Install WhiteBlacklist Mode

App install whitelist/blacklist mode.

Mode:

app_install_none_mode = 0;

app_install_black_list_mode = 1;

app_install_white_list_mode = 2;

Default: 0 = APP_INSTALL_NONE_MODE

(Not applicable for Android 7.)

Restrict GMS Apps

Restrict the GMS apps: 1=Chrome, 2=Youtube, 3=Map, 4=Contact, 5=Calculator, 6=Photo, 7=Calender, 8=Youtube Music, 9=PlayStore, 10=Gmail, 11=Drive, 12=Duo, 13=Google Music, 14=Google TV, 15=Google Search.

(Not applicable for Android 7.)

USB Host WhiteList

The USB Host WhiteList feature allows select USB devices to connect to the device.

- Usb_flags_no_restrict = -1
- usb_flags_allow_flash_devices = 2
- usb_flags_allow_hid (mouse and keyboard) = 4

(Applicable for CN80G devices only)

Disable White Black List

Enable or disable white/black list function.

Default: 0 = Disable

(Applicable for Android 8 and higher)

Clear App Install WhiteBlacklist

Clear all package name domains for app install whitelist and blacklist.

Keep Setup Wizard Running

If enabled, the initial Setup Wizard will not exit after scanning a provisioning barcode. This must be enabled for automating Wi-Fi connections to Android Zero Touch Enrollment servers.

- **HonSetupKeepRunning:** Keeps the Google Setup Wizard running after a provisioning barcode is scanned.
- **StayInSameScreen:** Device stays on the same screen after scanning a provisioning barcode.
- **None:** The initial Setup Wizard will exit after scanning a provisioning barcode and proceed into the Android OS.

(Applicable for Android 8 and higher)

Clear Disabled Components List

Clear the list of disabled components.

Default: 0 = Disabled

(Applicable for Android 8 and higher)

Disable applications components state

Set the state of app components like `/::0` or `/::0,/::1`, where 0 = enable and 1 = disable.

This setting does not work for the settings application from Android 10 onwards.

(Applicable for Android 8 and 9 only)

Block Development Mode

Turn setting on to disable development mode or off to enable development mode.

Default: Enabled

(Applicable for Android 8 and higher)

Current Email Mode

Select the current email mode.

- 0 = None (Default)
- 1 = Email blacklist mode
- 2 = Email whitelist mode

(Applicable for Android 8 and higher)

Package Install Unknown Apps Permission

Update a package's install permissions. Enter a value like:
com.android.chrome:com.honeywell.systemtools.autoinstall:1,com.android.chrome:
com.system.autocts:0

Where 1 = Allow and 0 = Not Allowed

(Applicable for Android 8 and higher)

Show Notification On LockScreen

Show notification on lock screen, same as modify the setting item: Settings - Apps & notifications -- Notifications -- On the lock screen set the value to Show all notification content or Don't show notifications at all.

Battery Optimizations Modes Whitelist

A system API for system user can call to add package name to "Battery optimizations modes Whitelist". Check the result here: Settings > Battery > Option menu > Battery optimization in "Not optimized" list.

(Not applicable for Android 7)

Disable Certificate By Name

Disable a certificate by the certificate name.

List certificate names separated by a comma, for example: VISA,WISeKey.

(Applicable for Android 8 and higher.)

Restrict Bluetooth

Restrict Bluetooth in system setting.

- **Enable** will allow access to Bluetooth.
- **Restricted** will restrict Bluetooth access.

Default: 0 = Enable

Restrict Google Backup

Restrict Google backup. Applicable only for GMS devices.

- **Enable** will allow access to Google Backup.
- **Restricted** will restrict Google Backup.

Default: 0 = Enable

Restrict GPS Location Provider

Restrict GPS location service.

- **Enable** will allow access to GPS location service.
- **Restricted** will restrict GPS location service.

Default: 0 = Enable

Restrict Installation from Unknown Sources

Restrict installation from unknown sources.

- **Enable** will allow access to installation from unknown sources.
- **Restricted** will restrict installation from unknown sources.

Default: 0 = Enable

Restrict NFC

Restrict NFC.

- **Enable** will allow access to NFC.
- **Disable** will restrict NFC access.

Default: 0 = Enable

Restrict Screen Capture

Restrict screen capture.

- **Enable** will allow access to screen capture.
- **Disable** will restrict screen capture.

Default: 0 = Enable

Restrict WiFi

Restrict WiFi in system setting.

- **Enable** will allow access to WiFi
- **Disable** will restrict WiFi access.

Default: 0 = Enable

Restrict OS Upgrade

Restrict OS upgrade. 0=Enabled, 1=Restricted

- **Enable** will allow OS upgrade.
- **Disable** will restrict OS upgrade.

Default: 0 = Enable

(Not applicable for Android 7.)

Restrict Nearby Share

Select Disable to allow the Nearby Share option in both Settings and Quick Settings. Set Enable to restrict.

- **Enable** restricts Nearby Share option.
- **Disable** allows Nearby Share option.

Default: 0 = Disable

(Applicable for Hon6490m on Android 12 and A13 and Hon4290 on A14)

Restrict GMS on device

Restrict GMS on device (only for GMS devices). 0=Enabled, 1=Restricted

- **Enable** will allow the access GMS on device (only for GMS devices).
- **Restricted** will restrict GMS on device (only for GMS devices).

Default: 0 = Enable

(Applicable for Android 9, 10, 11)

Google Account FRP

Enable or disable Google account factory reset protection (FRP). 1= Enable, 0=Disable.

Default: 1 = Enable

Remove Quick Settings Policy

Enable or disable the quick settings menu.

Default: 0 = Disabled

Network Settings

DHCP Host Name

DHCP (Dynamic Host Configuration Protocol) is a standardized networking protocol used primarily for assigning dynamic IP addresses.

This optional parameter can be passed to the DHCP server with a DHCP request to provide additional information about the client.

The length of the DHCP host name is restricted to 35 characters and cannot include blank spaces.

Value

00:00:00:a1:2b:cc

Captive Portal HTTPS URL

This setting allows the user to set the Captive Portal Server Address on the device.

You can type a desired value in the text box provided.

Value

None

Captive portal use https

Set 0 to not use HTTPS for network validation and none to clear this setting. By default, HTTPS will be used for network validation.

Captive portal fallback url

Set captive portal fallback url, set 'none' to empty the value.

Captive portal other fallback urls

Set captive portal other fallback url, set 'none' to empty the value.

Captive portal http url

Set captive portal http url, set 'none' to empty the value.

Captive Portal Mode

Set captive portal mode, 0 - to not detect captive portals, 1 - to detect a captive portal and prompt a sign-in notification.

Value

Default: 1 = Enabled

Background Data Setting

This setting is used to allow or restrict usage of cellular data for applications running in the background.

You can define which application in the background can use cellular data.

Use semicolon (;) to separate multiple values.

The setting has two options:

- 0 = Allow
- 1 = Restrict

Value

For example: com.android.chrome:1; com.google.android.youtube:0

In this example, Google Chrome in the background is restricted to use cellular data and YouTube is allowed to use cellular data in background.

Safe Mode Enabled

Enable or disable safe mode.:

- 0 = Disabled
- 1 = Enabled

Value

Disabled

(Applicable for Android 8 and higher)

Airplane Mode On

Airplane Mode controls the option to cut off all wireless connections to the device.

Use this setting to enable or disable Airplane Mode on the device.

Select a desired option to be configured to the device from the drop-down list box provided.

The setting has two options:

- **Enable** will activate the Airplane Mode on the device.
- **Disable** will deactivate the Airplane Mode on the device.

Value

Disable

Private DNS

Set 0 for DNS off, 1 for Automatic, 2 for provide DNS HOSTNAME.

Default: 1 = Automatic . (Applicable for Android 9, 10, 11)

Private DNS Provider Hostname

Set Private DNS provider hostname.

(Applicable for Android 9, 10, 11)

WiFi Domain

Set the Wi-Fi domain name.

(Applicable for Android 12, 13, 14)

NFC Settings

Beam Enabled

Android beam is a device-to-device data transfer tool that uses Near-Field Communication (NFC) and Bluetooth to send photos, videos, contact information, links to webpages, navigation directions and more from one device to another just by bumping them together.

Select a desired option to be configured to the device from the drop-down list box provided.

The setting has two options:

- **Enable** will activate the Android Beam on the device.
- **Disable** will deactivate the Android Beam on the device.

Value

Disable

NFC Enabled

Near Field Communications (NFC) is a set of standards for portable devices. It allows the devices to establish peer-to-peer radio communications, passing data from one device to another by touching or putting the devices very close together.

Select a desired option to be configured to the device from the drop-down list box provided.

The setting has two options:

- **Enable** will activate the Near Field Communication (NFC) on the device.
- **Disable** will deactivate the Near Field Communication (NFC) on the device.

Value

Disable

Mobile Data Enable

Enable/Disable Mobile Data. This has two options:

- **Enable** – Enables the Mobile Data.
- **Disable** – Disables the Mobile Data.

Set Preferred Network Type

Set the preferred network type. Valid values are 0-33. No default value. Applicable for WWAN devices only.

Default Sim for sending SMS

Define the SIM card to use for sending SMS: SIM 1, SIM 2, or None.

Value

None

(Applicable for Android 12 only.)

Default Sim for making Calls

Define the SIM card to use for making calls: SIM 1, SIM 2, or None.

Value

None

(Applicable for Android 12 only.)

Default Sim for Data or Internet usage

Define the SIM card to use for data or internet usage: SIM 1, SIM 2, or None.

Value

SIM 1

(Applicable for Android 12 only.)

Enable NFC Tag detection on device lock

Select Enable to allow NFC Tag detection when the device is resumed from a suspended state (i.e., when screen is turn on) but the device is locked (screen lock set to swipe, PIN, or password). Disable to do not detect in this case.

Value

Disable

(Applicable for Hon4290 Android 11, 12, 13 and Hon6490 Android 12, 13)

Ethernet Settings

Ethernet Enable

This setting allows the user to configure the Ethernet settings on the device.

To enable or disable the operation of the Ethernet Adapter on the device, select a desired option from the drop-down list box provided.

The setting has two options:

- **Enable** will activate the Ethernet settings on the device.
- **Disable** will deactivate the Ethernet settings on the device.

Value

Enable

Ethernet Static

This setting is used to enable or disable the Ethernet Static/DHCP on the device.

If Dynamic (DHCP) is selected, an IP Address for the Ethernet adapter will be automatically fetched from the DHCP Server.

If Static is selected, an IP Address for the Ethernet adapter will be assigned based on the values selected for IP Address, Gateway Address, Network Mask, Primary DNS and Secondary DNS.

To enable or disable the Ethernet Static/DHCP, select a desired option from the drop-down list box provided.

This setting has two options:

- **Enable** will activate the Ethernet static on the device.
- **Disable** will activate the DHCP on the device.

Value

Enable

AuthSetting

NONE = 0, PEAP-MSCHAPv2 = 1, TLS = 2

(Applicable for Android 10, 11)

CA Certificate

CA certificates are any certificates created by certified authority (CA).

(Applicable for Android 10, 11)

User Certificate

User certificates are any certificates created by user. (Enter the name of the installed Certificate.)

(Applicable for Android 10, 11)

Identity

Enter the Identity. This ID creates a tunnel through which the real ID (as entered in the Identity field) can pass. For additional security, make this ID different than the one entered in the Identity field.

(Applicable for Android 10, 11)

Anonymous Identity

Enter the Anonymous id. This ID creates a tunnel through which the real ID (as entered in the Identity field) can pass. For additional security, make this ID different than the one entered in the Identity field.

(Applicable for Android 10, 11)

Password

This is the password used for MD5-Challenge or LEAP authentication. It may contain up to 63 ASCII characters and is case-sensitive. Asterisks appear instead of characters for enhanced security.

(Applicable for Android 10, 11)

Static IP Value

This setting allows the user to set the Static IP value on the device.

Type the Static IP in the format xxx.xxx.xxx.xxx in the text box provided.

Value

192.168.12.34

Network Prefix Length

Network Prefix Length is the leftmost contiguous bits of an address which identifies the network portion of the address.

It is also used with uni-cast addresses to separate the prefix portion of the address from the Interface ID.

Value

In the Address: 2001:0db8:0000:0000:0000:0000:0001, 2001:0db8 is the prefix.

Gateway

This setting allows the user to set the Static Gateway on the device.

Type the Static Gateway in the format xxx.xxx.xxx.xxx in the text box provided.

Value

192.168.1.1

DNS 1

This setting allows the user to set the primary DNS server address to be assigned on the device.

Type the Static DNS 1 in the format xxx.xxx.xxx.xxx in the text box provided.

Value

192.168.12.31

DNS 2

This setting allows the user to set the secondary DNS server address to be assigned on the device.

Type the Static DNS 2 in the format xxx.xxx.xxx.xxx in the text box provided.

Value

192.168.12.212

Proxy Name

This setting allows the user to manually enter the proxy server's details to gain the internet access via the Ethernet.

You can enter the address of the proxy in the text box provided.

Value

proxy.example.com

192.168.1.100

Proxy Port

This setting allows the user to manually enter the proxy server's details to gain the internet access via The Ethernet.

You should specify Port, Proxy Server and Bypass List whenever Ethernet Proxy Server configuration is performed to help ensure that all three values are synchronized.

Complete IP address will be the combination of Proxy hostname and Proxy port details.

Value

6060

Bypass Proxy

The setting is used to provide access to any addresses that should bypass the Proxy Server to gain internet access on the device via the Ethernet.

Enter the Bypass Proxy address in the text box separated by commas.

Proxy URL: Set URL for proxy auto-config.

Proxy Type: Select proxy type.

This settings has 3 options.

- None
- Manual
- Proxy_auto config.

Value

localhost, 127.0.0.1, bescom-mo.gov

WiFi Settings

WiFi Frequency Band

WiFi Frequency Band is a range of frequency values the device can connect to.

Select the WiFi frequency band to be configured to the device.

The setting has three options:

- **0 = Auto** will automatically connect the device to the valid frequency band.
- **1 = 5 GHz** will only connect the device to 5GHz frequency band.
- **2 = 2.4GHz** will only connect the device to 2.4GHz frequency band.

Value

1

WiFi ESE Enable

The ESE (Embedded Secure Element) is a tamper-proof chip embedded in the device. It ensures the data is stored in a safe place and authorization is maintained to fetch the information.

To enable or disable the WiFi ESE, select a desired option from the drop-down list box provided.

The setting has two options:

- **Enable** will activate the WiFi ESE on the device.
- **Disable** will deactivate the WiFi ESE on the device.

Note: WiFi will be automatically disabled during the setting change and then restored back.

Value

Enable

WiFi FT Enable

WiFi FT (Fast Transition) allows the device to roam quickly in environments implementing WPA2 Enterprise security by ensuring that the device does not need to re-authenticate to the server every time it roams from one access point to another.

To enable or disable the WiFi FT, select a desired option from the drop-down list box provided.

The setting has two options:

- **Enable** will activate the WiFi Fast Transition on the device.
- **Disable** will deactivate the WiFi Fast Transition on the device.

Note: WiFi will be automatically disabled during the setting change and then restored back.

Value

Enable

Data Stall Recovery

Select Enable/Disable for Data Stall Recovery. To apply this setting, WiFi will be disabled and restored back.

This has two options:

- **Enable** – Enables the Data Stall Recovery.
- **Disable** – Disables the Data Stall Recovery.

WiFi gDot11 Mode

Dot 11 is a fast, secure, and reliable WiFi service which delivers seamless network connectivity.

Select the desired option to be configured to the device. The valid value ranges from 0-9.

- 0 = auto
- 1 = abg
- 2 = 11b
- 3 = 11g
- 4 = 11n
- 5 = 11g only
- 6 = 11n only
- 7 = 11b only
- 8 = 11ac only
- 9 = 11ac

Value

7

WiFi Power Save

WiFi Power Save will analyze patterns in WiFi traffic and adjusts the wireless connection accordingly thereby reducing battery usage.

To enable or disable WiFi Power Save, select a desired option from the drop-down list box provided.

The setting has two options:

- **Enable** will activate the WiFi Power Save on the device.
- **Disable** will deactivate the WiFi Power Save on the device.

Note: WiFi will be automatically disabled during the setting change and then restored back.

Value

Enable

WiFi gP2P Enabled

Peer-to-peer (P2P) computing or networking is a distributed application architecture that partitions tasks or workloads between peers.

To enable or disable WiFi gP2P feature on the device, select a desired option from the drop-down list box provided.

The setting has two options:

- **Enable** will activate the P2P feature on the device.
- **Disable** will deactivate the P2P feature on the device.

Value

Enable

WiFi WMM Configuration

WiFi Multimedia is a specification that enhances Quality Of Service (QoS) on a network by prioritizing data packets according to the categories: Voice, Video, Best effort and Background.

Select the WMM configuration to be applied to the device.

The setting has three options:

- 0 = Auto join any AP
- 1 = Enable QoS only
- 2 = Enable but QoS

Value

1

WiFi Beacon Loss

Set the Beacon loss of the device to a desired level. The valid value ranges from 10 to 200.

To adjust the Beacon loss of the device, you can type a value in the text box provided.

Value

63

Force WiFi Priority

The Force WiFi Priority lets you set WiFi connection priority on the device. It periodically monitors for signal strength and switches between WiFi networks accordingly.

To enable or disable Force WiFi Priority on the device, select a desired option from the drop-down list box provided.

The setting has two options:

- **Enable** will activate the Force WiFi Priority on the device.
- **Disable** will deactivate the Force WiFi Priority on the device.

Note: WiFi will be automatically disabled during the setting change and then restored back.

Value

Enable

WiFi Operating Channel Enable

This setting enables WLAN subsystem to operate on the selected channels.

To enable or disable this setting on the device, select a desired option from the dropdown list box provided.

The setting has two options:

- 0 = Disable
- 1 = Enable

Note: WiFi will be automatically disabled during the setting change and then restored back.

Value

1

Select the channels

This setting allows the user to enter the channels over which the WLAN will operate on the device.

The setting "WiFi Operating Channel Enable" needs to be enabled prior to selection of channels here.

This function allows the user to select the desired channel for the WiFi.

Note: WiFi will be automatically disabled during the setting change and then restored back.

Value

1-14, 36, 40, 44, 48, 52, 56, 60, 64, 100, 104, 108, 112, 116, 120, 124, 128, 132, 136, 140, 149, 153, 157, 161, 165.

Honeywell network stack

Enable or disable the Honeywell network stack. Select "True" to enable or "False" to disable.

Value

False

Enable MAC Randomization Support

Enable or disable MAC randomization support. This is a global setting. It is applicable for all Wi-Fi profiles and will reveal MAC privacy settings in the GUI.

Value

Disable

(Applicable for hon660 devices on Android 12 and higher)

MAC Randomization ON or OFF

Select Disable to use device MAC and Enable to use randomized MAC for this profile. Enable `enable_mac_randomization_support` under WiFi settings for this setting to take effect.

Value

Enable

(Applicable for hon660 devices on Android 12 and higher)

RSSI Threshold

RSSI (Received Signal Strength Indicator) Threshold is a measure of maximum power level that a RF client device can receive from an access point or router.

Set the Roaming RSSI threshold to a desired level. The valid value ranges from -90 to -40.

To adjust the Roaming RSSI threshold on the device, you can type a value in the text box provided.

Value

-72

RSSI Difference

Set the Roam RSSI (Received Signal Strength Indicator) difference to a desired level. The valid value ranges from 5 to 50.

Note: WiFi will be automatically disabled during the setting change and then restored back.

To adjust the Roam RSSI difference on the device, you can type a value in the text box provided.

Value

24

Roaming Band

WiFi Roaming is the process of a client moving an established WiFi network association from one access point to another access point within the same Extended Service Set (ESS) without losing connection.

Roaming Band defines the range of the network up to which the device can connect.

To enable or disable the Roaming band setting on the device, select a desired option from the drop-down list box provided.

The setting has two options:

- **Enable** will activate the Roaming Band setting on the device.
- **Disable** will deactivate the Roaming Band setting on the device.

Note: WiFi will be automatically disabled during the setting change and then restored back.

Value

Disable

Reset Roaming Parameters

This setting allows the user to reset the existing roaming parameters on the device.

To enable or disable Reset Roaming Parameters on the device, select a desired option from the drop-down list box provided.

Note: WiFi will be automatically disabled during the setting change and then restored back.

Value

Enable

WLAN Country Code

This setting is used to set WLAN Country Code on the device.

You can type a desired value in the text box provided.

Value

BE/ Belgium

Clear WLAN Country Code

This setting allows to clear WLAN Country Code on the device.

Select a desired option from the drop-down list box provided.

The setting has two options:

- **Enable** will activate the Clear WLAN Country Code on the device.
- **Disable** will deactivate the Clear WLAN Country Code on the device.

Value

Enable

WiFi Available Notification

This option controls the notification of open WiFi networks on the device.

Select a desired option to be configured to the device from the drop-down list box provided.

The setting has two options:

- **Enable** will activate the notification of open WiFi networks.
- **Disable** will deactivate the notification of open WiFi networks.

Value

Disable

WiFi Enabled

This setting provides options to configure the WiFi function on the device.

Select a desired option to be configured to the device from the drop-down list box provided.

The setting has two options:

- **Enable** will activate the WiFi function on the device.
- **Disable** will deactivate the WiFi function on the device.

Value

Disable

Turn on Wi-Fi automatically

Set 1 to turn on WiFi automatically and 0 to turn off.

WiFi Whitelist

Set multiple SSID separated by semicolon for wifi_white_list.

- **Enable** will whitelist the SSID.
- **Disable** will remove the whitelist SSID.

Value

Default: Disable (Not applicable for Android 7.)

Enable WiFi Background Scan

Set 0 to disable background scan or 1 to enable background scan. Set an interval value in seconds between 5–600, for example, 30, which means a background scan is performed with a 30 second interval.

- **Enable** turns on background scan.
- **Disable** turns off background scan.

Value

Default: Disable

(Applicable for Android 9 and 10 only.)

WWAN Settings

Cellular Data Enabled

This setting allows the user to enable or disable Cellular Data on the device.

Select a desired option to be configured to the device from the drop-down list box provided.

The setting has two options:

- **Enable** will activate the Cellular Data on the device.
- **Disable** will deactivate the Cellular Data on the device.

Value

Disable

Roaming Data Enabled

Roaming Data controls the accessibility to data usage on the device outside the registered region.

Select a desired option to be configured to the device from the drop-down list box provided.

The setting has two options:

- **Enable** will activate the Roaming Data on the device.
- **Disable** will deactivate the Roaming Data on the device.

Value

Disable

Delete All APNs

1 to delete all APNs, 0 to not delete

Default: 0 = Disabled (Not applicable for Android 7.)

Reset to Default Enabled

Enable or disable reset APNs to default.

Default: 0 = Disabled

Preferred MCC

Enter the preferred Mobile Country Code (MCC).

(Applicable for Android 11 and higher)

Preferred MNC

Enter the preferred Mobile Network Code (MNC).

(Applicable for Android 11 and higher)

WWAN APN Profile

Name

This setting provides option to enter the APN (Access Point Name) to be used on the device.

Type the required APN in the text box provided.

Value

Smart Internet

APN

An APN (Access Point Name) is the name of a gateway between a GSM, GPRS, 3G or 4G mobile network and another computer network, frequently the public Internet.

This setting specifies the web address of the service provider.

Value

vodafone-service-provider

APN Proxy

This setting specifies the address of the proxy server. This may be given as an IP address (for example, numbers connected with dots or colons such as 10.0.0.1) or as a hostname.

You can type the desired APN Proxy in the text box provided.

Many carriers do not require a proxy.

Value

192.168.12.101

Port

This field relates to the Proxy field, and if a proxy is being used, both must be set. There is no default value for this field and leaving it blank will disable use of the proxy.

Consult your carrier's recommended APN settings to see what port number you need to use if you are using an HTTP proxy. If you do not need to use an HTTP proxy this should remain empty.

Value

7070

Username

This setting allows the user to enter a user name that can be used to authenticate to an APN.

A network accessed via an APN may or may not require authentication (Authentication is done using a username and a password).

Value

beeline.username

APN Password

This setting allows the user to authenticate to an APN using a password in order to access a network.

A network accessed via an APN may or may not require authentication (Authentication is done using a username and a password).

Value

beeline-password-beeline

Server

This setting allows the user to enter a WAP Gateway Server address to be used for an APN.

This field is usually left blank.

Value

192.168.12.1

MMSC

This setting allows the user to enter the Multimedia Messaging Service Center (MMSC) address required to send and receive MMS messages over the network accessed via an APN.

Value

<http://mmsc.proxy.com>

MMS Proxy

This setting refers to the address or name of an HTTP proxy to be used only for communicating with the MMSC (Multimedia Messaging Service Center) to send and receive MMS messages over the network accessed via an APN.

If an MMS Proxy is required, an MMS Port is also generally required.

Value

Testproxy name

MMS Port

This setting refers to the port number of an HTTP proxy to be used only for communicating with the MMSC (Multimedia Messaging Service Center) to send and receive MMS messages over the network accessed via an APN.

If an MMS Proxy is required, an MMS Port is also generally required.

Value

8080

MCC

MCC stands for Mobile Country Code. This option specifies the carrier network that the APN configuration should be used for.

The MCC generally matches the SIM Card being used or the APN will not be usable.

Value

404

MNC

MNC Stands for Mobile Network Code. This option specifies the carrier network that the APN configuration should be used for.

The MNC generally matches the SIM Card being used or the APN will not be usable.

Value

49

Authentication Type

Authentication Type is a method used to establish a data connection on the device.

Select authentication type to be configured to the device.

The setting has four options:

- **0** = None
- **1** = PAP
- **2** = CHAP
- **3** = PAP / CHAP

Value

3

Type

This feature specifies which types of data communication should use this APN configuration. Different types of communication may use different configurations.

Value

MMS

Protocol

This setting specifies whether to enable IPv4, IPv6 or both.

This can be set independently for home and roaming networks.

Select the option to be configured to the device.

The setting has three options:

- **0** = IPV4
- **1** = IPV6
- **2** = IPV4 / IPV6

Value

2

Roaming Protocol

This setting specifies whether to enable IPv4, IPv6 or both on the device.

This can be set independently for home and roaming networks.

Select the option to be configured to the device.

The setting has three options:

- **0** = IPV4
- **1** = IPV6
- **2** = IPV4 / IPV6

Value

1

Bearer

This is an optional field allowing you to exclude this APN configuration based on the communication technology.

Select the option to be configured to the device.

The setting has three options:

- **0** = LTE
- **1** = eHRPD
- **2** = Unspecified (default)

Value

2

MVNO Type

This setting allows the user to select a desired MVNO (Mobile Virtual Network Operator) Type on the device. It also restricts use of the APN to certain MVNOs or subscriber accounts.

Select the MVNO Type to be configured to the device.

The setting has four options:

- **0** = None, No MVNO will be used to configure for the APN.
- **1** = SPN, the MVNO will be specified via an SPN (Service Provider Name) value for the APN.
- **2** = IMSI, the MVNO will be specified via an IMSI (International Mobile Subscriber Identity) value for the APN.
- **3** = GID, the MVNO will be specified via a GID (Group Identifier) value for the APN.

Value

3

MVNO Match Data

This setting allows the device to match the APN (Access Point Name) on the MVNO (Mobile Virtual Network Operator) and the carrier to allow data transmission through the connected channel.

The exact value to be specified depends on the MVNO Type specified. Consult your MVNO carrier for information on the MVNO Type and MVNO Match Data value to be used.

If no APN is provided in the MVNO match data, device will automatically fetch the default APN on the device.

Value

4E, 302720x94, BEN NL

VPN Profile

VPN Profile Name

Set VPN profile name.

VPN Type

Set VPN profile type.

VPN Server Address

Set VPN server address xxx.xxx.xxx.xxx

VPN Username

Set VPN Username

VPN Password

Set VPN Password

Save Login

Select 'Save' to save username and password or 'Do not save' to not save

Default: 1 = Save

VPN Mppe

Enable or disable PPP encryption

Default: 1 = Enable

L2TP Secret

Set L2TP secret.

IPSec Identifier

Set IP secret identifier.

IPSec Preshared Key

Set IP secret pre-shared key.

IPSec User Certificate

Set IP secret user certificate.

IPSec CA certificate

Set IP secret CA certificate.

IPSec Server Certificate

Set IP secret server certificate.

DNS Search Domains

Set VPN search domains.

DNS Servers

Set DNS servers xxx.xxx.xxx.xxx

Forwarding Routes

Set forwarding routers xxx.xxx.xxx.xxx

Delete WiFi by SSID

Delete Wi-Fi AP

Enter SSID to delete Wi-Fi Access Point.

(Applicable for Android 9 and higher)

Bluetooth Settings

Bluetooth Whitelist Enabled

This setting allows the user to enable or disable the Bluetooth Whitelist functionality on the device.

Select a desired option to be configured to the device from the drop-down list box provided.

The setting has two options:

- **Enable** will activate the Bluetooth Whitelist functionality on the device.
- **Disable** will deactivate Bluetooth Whitelist functionality on the device.

Value

Enable

Add Bluetooth Whitelist

This setting is used to provide the OUI (Organizationally Unique Identifier) information to Bluetooth Whitelist.

You can type a desired value in the text box provided.

Use semicolon (;) to separate the OUIs.

Value

00:11:22;11:22:33

Clear Bluetooth Whitelist

This setting allows the user to clear the Bluetooth Whitelist values on the device.

Select a desired option to be configured to the device from the drop-down list box provided.

The setting has two options:

- **Enable** will activate the Clear Bluetooth Whitelist functionality on the device.
- **Disable** will deactivate Clear Bluetooth Whitelist functionality on the device.

Value

Enable

Bluetooth Device Name

This setting allows the user to provide a name for the device's Bluetooth network.

You can type a desired value in the text box provided.

Value

CT60

Enable Bluetooth Silent Pairing

This setting controls whether the device will be permitted to pair with remote Bluetooth devices without requiring user confirmation.

Note: This feature is different from auto-pairing; it skips the confirmation step after device pairing has been initiated by the user.

Select a desired option to be configured to the device from the drop-down list box provided.

The setting has two options:

- **Enable** will activate the Bluetooth Silent Pairing functionality on the device.
- **Disable** will deactivate the Bluetooth Silent Pairing functionality on the device.

Value

Enable

Bluetooth Enable

This setting allows the user to enable or disable Bluetooth function on the device.

Select a desired option to be configured to the device from the drop-down list box provided.

The setting has two options:

- **Enable** will activate the Bluetooth function on the device.
- **Disable** will deactivate Bluetooth function on the device.

Value

Enable

Bluetooth FTP Profile

The Bluetooth FTP profiles provide standards which allow devices to use Bluetooth in the intended manner.

This setting allows the user to enable or disable Bluetooth FTP Profile on the device.

Select a desired option to be configured to the device from the drop-down list box provided.

The setting has two options:

- **Enable** will activate the Bluetooth FTP Profile on the device.
- **Disable** will deactivate Bluetooth FTP Profile on the device.

Value

Enable

Bluetooth Device SPR

Set Bluetooth device SPR. In format 'Name1,UAP,PIN#Name2,UAP,PIN', Separate two values with '#'.

Value

Default: Granit,00:10:20,0#1991iSR,B0:91:22,0

Mobile Network

Set Data Warning

Enable or disable the data warning. This setting must be configured for each profile.

Value

Disable

(Applicable for WWAN devices only. Applicable for Android 11, 12, and 13.)

Set Data Limit

Enable or disable the data limit. This setting must be configured for each profile.

Value

Disable

(Applicable for WWAN devices only. Applicable for Android 11, 12, and 13.)

Set Data Limit Value

Set the data limit value in MB or GB., for example, 4.2 MB or 3.2 GB. This setting must be configured for each profile.

Value

Disable

(Applicable for WWAN devices only. Applicable for Android 11, 12, and 13.)

Voice over Wi-Fi

Enable or disable Voice Over Wi-Fi. Set "0" to disable or "1" to enable.

Value

0

(Applicable for WWAN devices only.)

(Applicable for Android 13 and 14 for all platforms)

Voice over Wi-Fi mode

Set the user's preference for Voice Over Wi-Fi calling mode: WIFI_ONLY, CELLULAR_PREFERRED, WIFI_PREFERRED, or IMS_PREFERRED.

Value

WIFI_ONLY

(Applicable for WWAN devices only.)

(Applicable for Android 13 and 14 for all platforms)

Voice over Wi-Fi Roaming mode

Set the user's preference for Voice Over Wi-Fi calling Roaming mode: WIFI_ONLY, CELLULAR_PREFERRED, WIFI_PREFERRED, or IMS_PREFERRED.

Value

WIFI_ONLY

(Applicable for WWAN devices only.)

(Applicable for Android 13 and 14 for all platforms)

Voice over LTE

Enable or disable Voice Over LTE.. Set "0" to disable or "1" to enable.

Value

0

(Applicable for WWAN devices only.)

(Applicable for Android 13 and 14 for all platforms)

Voice over New Radio

Enable or disable Voice Over New Radio. Set "0" to disable or "1" to enable.

Value

0

(Applicable for WWAN devices only.)

(Applicable for Android 13 and 14 for all platforms)

Suppress Prompt for ScanHandle

This setting is used to suppress the prompt whether scan handle is attached or not.

Select the option to be configured to the device from the drop-down list box provided.

The setting has two options:

- **Yes** = Hide
- **No** = Display Value Hide

Value

Hide

Key Repeat Disable

This setting is used to enable or disable Key Repeat on long press (supported on Oreo and Pie).

This has two options:

- **Enable** – Enable Key Repeat on long press.
- **Disable** – Disable Key Repeat on long press.

Retain app login state

Enable this property to retain the app login state when charging. Disable if not required.

Default: 0 = Disabled

(Applicable for Android 9 and higher or Android 12 for Hon660 and Hon6490 only)

Enable Edit Box Initial Focus

Select Enable to enable Edit Box Initial focus or Disable to disable Edit Box Initial focus.

Default: 0 = Disabled

(Applicable for Android 9 and higher)

Change OS Mode

Change the OS mode. Applicable for GMS devices only. 1 = GMS and 0=non-GMS.

Default: 1 = GMS

(Applicable for Android 9 and higher)

Grant Run Time Permissions

Set the Grant Run Time Permissions like
packagename1:permission1,permission2,permission3,permission4;packagename2:
permission1,permission2,permission3.

(Applicable for Android 9, 10, 11)

Disable Privacy Reminder on MDM Enrollment

Enable to turn off the privacy reminder during MDM enrollment. 0=Disabled, 1=Enabled.

Default: 0 = Disabled

(Applicable for Android 10 and higher)

Allow to ignore CarMode

Enable to allow the mobile device to ignore CarMode. 0=Disabled, 1=Enabled.

Default: 0 = Disabled

(Applicable for Android 11 and higher)

Disable Quick Camera Access

Enable to allow launching the camera by double-tapping the Power button. 0=Disabled, 1=Enabled.

Default: 1 = Enabled

(Applicable for Android 11 and higher)

Key Record Current Time

When the value is set to Disabled, the system will show the last shutdown time. When the value is set to Enabled, the system will show the build date and time. 0=Disabled, 1=Enabled.

Default: 0 = Disabled

(Applicable for Hon4290 CT45XP mobile computer only.)

Disable android settings app

Enable or disable Android settings app.

Default: 0 = Disabled

(Applicable for Android 9 and higher)

Disable application state

Set the state of an application where 0 is Enabled and 1 is Disabled.
For example, set `com.android.settings:0,com.example.application:1` where 0 = enable and 1 = disable.

To disable an application in cross profile give a value like (userId)-
`com.android.settings:0,com.example.application:1`.

Note: (userId) is 0 for personal and 10 for worker profile.

(Applicable for Android 11 and higher)

Disable Scan Trigger Keyguard Locked

Select Enable to disable the scan trigger when the keyguard is locked. Select Disable to enable the scan trigger when the keyguard is locked.

Value

Enable

(Applicable for Android 11 and 12)

Scan Handle Setting

Configure scan handle in camera preview. Set Disable to not remove the scan handle in camera preview or enable to remove the scan handle from camera preview.

Value

Disable

(Applicable for Android 9 and higher for CK65 devices)

Hide Provisioner Tasks UI

Enable to hide provisioner tasks in the UI. Disable to show tasks.

Value

Disable

(Applicable for Android 8 and higher)

Dispatch scan keys to App

Set dispatch scan key to app. 0 = do not dispatch scan keys to app. 1 = dispatch scan keys to app.

Value

0

(Applicable for Android 8 and higher)

Scan Key Wakeup Behavior

Set the Scan button behavior on wake-up. 0 = wakeup only (default), 1 = wakeup and scan.

Value

0

(Applicable for Android 8 and higher)

Default Browser

The package name of the default browser app to set, for example, com.android.chrome.

(Applicable for Android 8 and higher)

Clear Previous Scan Results

Enable to clear the previous scanning result or set Disable to default.

Value

Disable

(Applicable for Android 8 and higher)

Enhance keyboard enter option

Select Disable for the default IME option. Select Enable to force enter key, ignore next action.

Value

Disabled

(Applicable for Android 10 and higher)

Enable scan camera

Select Enable to enable the scan camera option or Disable to disable the scan camera option.

Value

Disabled

(Applicable for Android 11 and higher)

OS SDK Setting

OS SDK Setting will whitelist the application packages allowed to perform sensitive operations provided by the Honeywell SDK.

Use comma (,) as separator in between Package names.

Set to 0 to clear whitelist [Requires FW: 86.xx.06+].

Value

com.package.name1,com.package.name2

Disable Revoke App Permission if app is not used

Disable Revoke App Permission if an app is not used. Enter a package name in the format packagename:0 or packagename:1, where 0 is disable and 1 is enable.

Use a comma (,) as a separator between Package names, for example:
packagename1:1,packagename2:0.

Value

packagename1:1

(Applicable for Android 11 only)

Disable Settings App Components

Enable Network and Internet

Turn the Network and Internet menu item on or off in the Settings app. Select Enable to show the menu item or Disable to hide it.

Value

Enable

(Applicable for Android 9 and higher)

Enable Connected Devices

Turn the Connected Devices menu item on or off in the Settings app. Select Enable to show the menu item or Disable to hide it.

Value

Enable

(Applicable for Android 9 and higher)

Enable Apps and Notifications

Turn the Apps and Notifications menu item on or off in the Settings app. Select Enable to show the menu item or Disable to hide it.

Value

Enable

(Applicable for Android 10 and 11)

Enable Apps

Turn the Apps menu item on or off in the Settings app. Select Enable to show the menu item or Disable to hide it.

Value

Enable

(Applicable for Android 12 and higher)

Enable Notifications

Turn the Notifications menu item on or off in the Settings app. Select Enable to show the menu item or Disable to hide it.

Value

Enable

(Applicable for Android 12 and higher)

Enable Battery

Turn the Battery menu item on or off in the Settings app. Select Enable to show the menu item or Disable to hide it.

Value

Enable

(Applicable for Android 9 and higher)

Enable Display

Turn the Display menu item on or off in the Settings app. Select Enable to show the menu item or Disable to hide it.

Value

Enable

(Applicable for Android 10 and higher)

Enable Sound

Turn the Sound menu item on or off in the Settings app. Select Enable to show the menu item or Disable to hide it.

Value

Enable

(Applicable for Android 10 and higher)

Enable Storage

Turn the Storage menu item on or off in the Settings app. Select Enable to show the menu item or Disable to hide it.

Value

Enable

(Applicable for Android 10 and higher)

Enable Privacy

Turn the Privacy menu item on or off in the Settings app. Select Enable to show the menu item or Disable to hide it.

Value

Enable

(Applicable for Android 10 and higher)

Enable Location

Turn the Location menu item on or off in the Settings app. Select Enable to show the menu item or Disable to hide it.

Value

Enable

(Applicable for Android 10 and higher)

Enable Security

Turn the Security menu item on or off in the Settings app. Select Enable to show the menu item or Disable to hide it.

Value

Enable

(Applicable for Android 9 and higher)

Enable Security and Privacy

Turn the Security and Privacy menu item on or off in the Settings app. Select Enable to show the menu item or Disable to hide it.

Value

Enable

(Applicable for Android 14 and higher)

Enable Accounts

Turn the Accounts menu item on or off in the Settings app. Select Enable to show the menu item or Disable to hide it.

Value

Enable

(Applicable for Android 9, 10, and 11)

Enable Passwords and Accounts

Turn the Passwords and Accounts menu item on or off in the Settings app. Select Enable to show the menu item or Disable to hide it.

Value

Enable

(Applicable for Android 12 and higher)

Enable Accessibility

Turn the Accessibility menu item on or off in the Settings app. Select Enable to show the menu item or Disable to hide it.

Value

Enable

(Applicable for Android 10 and higher)

Enable HoneywellSettings

Turn the Honeywell Settings menu item on or off in the Settings app. Select Enable to show the menu item or Disable to hide it.

Value

Enable

(Applicable for Android 10 and higher)

Enable Digital Wellbeing and parental controls

Turn the Digital Wellbeing & parental controls menu item on or off in the Settings app. Select Enable to show the menu item or Disable to hide it.

Value

Enable

(Applicable for Android 10 and higher)

Enable Google

Turn the Google menu item on or off in the Settings app. Select Enable to show the menu item or Disable to hide it.

Value

Enable

(Applicable for Android 10 and higher)

Note: Disabling the Google settings fragment can disrupt the functionality of various apps and settings that depend on them. This includes critical services such as location services, push notifications, and authentication, which are integral to the operation of many apps. Disabling Google in settings may result in apps malfunctioning or not working altogether, as they rely on these services for core functionalities. It's important to consider the dependencies and potential impacts before disabling Google in Settings on your device.

Enable System

Turn the System menu item on or off in the Settings app. Select Enable to show the menu item or Disable to hide it.

Value

Enable

(Applicable for Android 10 and higher)

Enable About Phone

Turn the About Phone menu item on or off in the Settings app. Select Enable to show the menu item or Disable to hide it.

Value

Enable

(Applicable for Android 9 and higher)

Date and Time

Auto Time

This setting provides option to fetch the date, time, and time zone automatically from the network.

To enable or disable the Auto Time option, select a desired option from the drop-down list box provided.

The setting has two options:

- **Enable** will activate the Auto Time setting on the device.
- **Disable** will deactivate the Auto Time setting on the device.

Value

Enable

Auto Time Zone Enabled

This setting provides option to automatically fetch the time zone from the network (NITZ).

The setting has two options:

- **Enable** will activate the Auto Time Zone setting on the device.
- **Disable** will deactivate the Auto Time Zone setting on the device.

Value

Enable

(Applicable for Android 7 and higher.)

Location time zone detection enabled

Specify if the user prefers location time zone detection (LTZP). Auto Time Zone must be enabled to take effect.

Value

Disable

(Applicable for Android 14 - WWAN devices only)

Time Format

This setting controls the Time Format in which time will be displayed on the device.

The setting has two options:

- **12** hour clock runs from 1 am to 12 noon and then from 1 pm to 12 midnight.
- **24** hour clock uses the numbers 00:00 to 23:59 (midnight is 00:00).

Value

12

Date and Time

This setting enables the user to set the appropriate date and time on the device and to set the display style of Date and Time on the device.

Set date and time in the format yyyy-mm-dd, hh:mm.

Value

2019-09-12, 10:52

Select Time Zone

This setting allows the user to select whether time zone configuration will be performed manually or automatically by connecting to a NITZ (Network Identity and Time Zone) source.

Select the desired time zone from the drop-down list box.

Value

America/Los_Angeles

Update time at once

This setting allows the user to define the time to sync with the NTP server.

The setting options are:

- **0** 30 minutes
- **1** 1 hour
- **2** 6 hours
- **3** 12 hours
- **4** 24 hours

Value

4

(Not applicable for Android 8)

Ignore time sync with mobile network

Enable or disable time sync with a mobile network.

Value

Disabled

(Applicable for Android Hon6490 12 and 13)

Sets the Time from NTP

This setting allows the user to enter the address of the Network Time Protocol (NTP) Server to be used to perform automatic date and time configuration on a device when the Auto Time mode is configured on the device.

Value

us.pool.ntp.org

Show NTP Server Option

This setting controls whether to show or hide the NTP Server option in the device UI in settings.

The setting has two options:

- **On** = Show
- **Off** = Hide

Value

Off

Doze Mode

Doze Mode Settings

Doze Mode prevents certain tasks from running when the device is in idle state to reduce power consumption.

To enable or disable the Doze Mode Settings, select a desired option from the drop-down list box provided.

The setting has two options:

- **Enable** will activate the Doze Mode Settings on the device.
- **Disable** will deactivate the Doze Mode Settings on the device.

Value

Enable

Logger Settings

HXLogger Settings

HXLogger enables the logging option on the device. The logs will be placed in a folder structure in the internal storage of the device and the reports related to applications or errors or other information will be logged here.

This setting allows the user to enable or disable the HX Logger setting on the device.

Select a desired option from the drop-down list box provided.

The setting has two options:

- **Enable** will activate the HXLogger Settings on the device.
- **Disable** will deactivate the HXLogger Settings on the device.

Value

Enable

HXLogger Settings

Logger Path

This setting is used to set the path of the logger folder on the device.

You can type a desired value in the text box provided.

Value

Default path = /storage/IPSM/logger

Max Logger Size

Set the HXLogger maximum file size in Gigabytes (GB) from 1 to 10.

You can type a desired value in the text box provided.

Value

4

(Applicable for Android 8, 9, 10, 11, 12, 13)

ANR Plugin

This setting allows the user to enable or disable ANR Plugin on the device.

Select a desired option from the drop-down list box provided.

The setting has two options:

- **Enable** will activate the ANR Plugin on the device.
- **Disable** will deactivate the ANR Plugin on the device.

Value

Enable

Tombstone Plugin

This setting allows the user to enable or disable Tombstone Plugin on the device.

Select a desired option from the drop-down list box provided.

The setting has two options:

- **Enable** will activate the Tombstone Plugin on the device.
- **Disable** will deactivate the Tombstone Plugin on the device.

Value

Enable

TCPDump Plugin

This setting allows the user to enable or disable TCPDump Plugin on the device.

Select a desired option from the drop-down list box provided.

The setting has two options:

- **Enable** will activate the TCPDump Plugin on the device.
- **Disable** will deactivate the TCPDump Plugin on the device.

Value

Enable

TCPDump Interface Value

This setting is used to set TCPDump Interface Value on the device.

You can type a desired value in the text box provided.

Value

12

Enable Snapshot Plugin

This setting is used to set whether to enable Snapshot Plugin or not on the device.

Select a desired option from the drop-down list box provided.

The setting has two options:

- **Enable** will activate the Snapshot Plugin on the device.
- **Disable** will deactivate the Snapshot Plugin on the device.

Value

Enable

Snapshot Log Interval

This setting is used to set log interval in seconds on the device.

You can type a desired value in the text box provided.

Value

10

Snapshot Log Keep Time

This setting is used to set log keep time in seconds on the device.

You can type a desired value in the text box provided.

Value

50

Enable SnapShot topcmd

This setting is used to set whether to enable Top Command or not on the device.

Select a desired option from the drop-down list box provided.

The setting has two options:

- **Enable** will activate the Top Command on the device.
- **Disable** will deactivate the Top Command on the device.

Value

Enable

Enable SnapShot CPUInfo

This setting is used to set whether to enable SnapShot CPUInfo or not on the device.

Select a desired option from the drop-down list box provided.

The setting has two options:

- **Enable** will activate the SnapShot CPUInfo on the device.
- **Disable** will deactivate the SnapShot CPUInfo on the device.

Value

Enable

Enable SnapShot MemInfo

This setting is used to set whether to enable SnapShot MemInfo or not on the device.

Select a desired option from the drop-down list box provided.

The setting has two options:

- **Enable** will activate the SnapShot MemInfo on the device.
- **Disable** will deactivate the SnapShot MemInfo on the device.

Value

Enable

Enable SnapShot DiskInfo

This setting is used to set whether to enable SnapShot DiskInfo or not on the device.

Select a desired option from the drop-down list box provided.

The setting has two options:

- **Enable** will activate the SnapShot DiskInfo on the device.
- **Disable** will deactivate the SnapShot DiskInfo on the device.

Value

Enable

Enable SnapShot ProcessInfo

This setting is used to set whether to enable SnapShot ProcessInfo or not on the device.

Select a desired option from the drop-down list box provided.

The setting has two options:

- **Enable** will activate the SnapShot ProcessInfo on the device.
- **Disable** will deactivate the SnapShot ProcessInfo on the device.

Value

Enable

Enable Dumpsys Plugin

This setting is used to set whether to enable Dumpsys Plugin or not on the device. Select a desired option from the drop-down list box provided.

The setting has two options:

- **Enable** will activate the Dumpsys Plugin on the device.
- **Disable** will deactivate the Dumpsys Plugin on the device.

Value

Enable

Dumpsys Log Interval

This setting is used to set Dumpsys Log Interval in seconds on the device. You can type a desired value in the text box provided.

Value

50

Dumpsys Log KeepTime

This setting is used to set Dumpsys Log KeepTime in seconds on the device. You can type a desired value in the text box provided.

Value

50

Enable Dumpsys AudioInfo

This setting is used to set whether to enable Dumpsys AudioInfo or not on the device.

Select a desired option from the drop-down list box provided.

The setting has two options:

- **Enable** will activate the Dumpsys AudioInfo on the device.
- **Disable** will deactivate the Dumpsys AudioInfo on the device.

Value

Enable

Enable Dumpsys Battery Info

This setting is used to set whether to enable Dumpsys Battery Info or not on the device.

Select a desired option from the drop-down list box provided.

The setting has two options:

- **Enable** will activate the Dumpsys Battery Info on the device.
- **Disable** will deactivate the Dumpsys Battery Info on the device.

Value

Enable

Enable Dumpsys Mem Info

This setting is used to set whether to enable Dumpsys Mem Info or not on the device.

Select a desired option from the drop-down list box provided.

The setting has two options:

- **Enable** will activate the Dumpsys Mem Info on the device.
- **Disable** will deactivate the Dumpsys Mem Info on the device.

Value

Enable

Enable Dumpsys Location Info

This setting is used to set whether to enable Dumpsys Location Info or not on the device.

Select a desired option from the drop-down list box provided.

The setting has two options:

- **Enable** will activate the Dumpsys Location Info on the device.
- **Disable** will deactivate the Dumpsys Location Info on the device.

Value

Enable

Enable Dumpsys WiFi Info

This setting is used to set whether to enable Dumpsys WiFi Info or not on the device.

Select a desired option from the drop-down list box provided.

The setting has two options:

- **Enable** will activate the Dumpsys WiFi Info on the device.
- **Disable** will deactivate the Dumpsys WiFi Info on the device.

Value

Enable

Enable Dumpsys WiFi Scanner Info

This setting is used to set whether to enable Dumpsys WiFi Scanner Info or not on the device.

Select a desired option from the drop-down list box provided.

The setting has two options:

- **Enable** will activate the Dumpsys WiFi Scanner Info on the device.
- **Disable** will deactivate the Dumpsys WiFi Scanner Info on the device.

Value

Enable

Enable Dumpsys Power Info

This setting is used to set whether to enable Dumpsys Power Info or not on the device.

Select a desired option from the drop-down list box provided.

The setting has two options:

- **Enable** will activate the Dumpsys Power Info on the device.
- **Disable** will deactivate the Dumpsys Power Info on the device.

Value

Enable

Enable DiagMdLog Plugin

This setting is used to set whether to enable DiagMdLog Plugin or not on the device.

Select a desired option from the drop-down list box provided.

The setting has two options:

- **Enable** will activate the DiagMdLog Plugin on the device.
- **Disable** will deactivate the DiagMdLog Plugin on the device.

Value

Enable

Enable Camera Plugin

This setting is used to set whether to enable Camera Plugin or not on the device.

Select a desired option from the drop-down list box provided.

The setting has two options:

- **Enable** will activate the Camera Plugin on the device.
- **Disable** will deactivate the Camera Plugin on the device.

Value

Enable

Enable Logfilter Plugin

This setting is used to enable or disable the Logfilter Plugin.

The setting has two options:

- **Enable** will activate the Logfilter Plugin on the device.
- **Disable** will deactivate the Logfilter Plugin on the device.

Value

Enable

(Applicable for Android 10 and 11 only)

DiagMdLog CFG File

Select CFG file value as "Default," "Full," or "GPS."

(Applicable for Android 11, 13, and 14)

Language and Input Settings

Locale Country

This setting allows the user to set the country code on the device, like 'US'.

You can select the appropriate country code from the drop-down list provided.

Value

US

Locale Language

This setting allows the user to select the language of preference for navigation on the device.

You can select a desired language from the drop-down list provided.

Value

English

Default Input Method

This setting enables the user to set the Default Input Method on the device.

You can type a desired default input method in the text box provided.

Value

com.android.hsm.sip/.SIPSoftKeyboard

Show Hardware Input Method

This setting is used to configure the device whether to show or hide the virtual keyboard when physical keyboard is active.

Select a desired option from the drop-down list box provided.

The setting has two options:

- **Enable** will show the Hardware Input Method on the device.
- **Disable** will hide the Hardware Input Method on the device.

Value

Enable

Enable Keyboard Suggestion

This setting is used to set whether to enable Keyboard Suggestion or not on the device.

Select a desired option from the drop-down list box provided.

The setting has two options:

- **Enable** will activate the Keyboard Suggestion on the device.
- **Disable** will deactivate the Keyboard Suggestion on the device.

Value

Enable

EnablePublixSetting HonKeyboard

This setting is used to set whether to enable Publix setting in Honeywell Keyboard or not on the device.

Select a desired option from the drop-down list box provided.

The setting has two options:

- **Enable** will activate the Publix setting in Honeywell Keyboard.
- **Disable** will deactivate the Publix setting in Honeywell Keyboard.

Value

Enable

Autofill Service

This setting is used to set whether to enable Autofill Service or not on the device.

Select a desired option from the drop-down list box provided.

The setting has two options:

- **Google Autofill Service**
- **None**

Value

None

Enable Google Keyboard Emoji

This setting is used to enable or disable Google keyboard emoji.

- **0 = Disable**
- **1 = Enable**

Enable Keypress Sound for Physical Keyboard

This setting is used to set whether to enable Keypress Sound for physical keyboard or not on the device.

Select a desired option from the drop-down list box provided.

The setting has two options:

- **Enable** will activate the Keypress Sound for physical keyboard on the device.
- **Disable** will deactivate the Keypress Sound for physical keyboard on the device.

Value

Enable

Vibrate on Key Press

This setting is used to set whether to keep vibration enabled on keypress on the device or not.

Select a desired option from the drop-down list box provided.

The setting has two options:

- **Enable** will activate vibration on keypress on the device.
- **Disable** will deactivate vibration on keypress on the device.

Value

Enable

Pointer Speed

This setting allows the user to change the speed at which mouse pointer moves.

Valid value ranges between -7 and +7.

You can type a desired value in the text box provided.

Value

0

Spell Checker Enabled

This setting allows the user to know when words are misspelled and corrects misspelled words as you type.

Select a desired option from the drop-down list box provided.

The setting has two options:

- **Enable** will activate the Spell Checker on the device.
- **Disable** will deactivate the Spell Checker on the device.

Value

Enable

Selected Spell Checker

Selected Spell Checker service is one of the services managed by the text service manager and helps to check the spelling for a selected text.

You can type the package name of the spell checker service that you want to enable for spell checking.

Value

Sample Package

Enabled Input Methods

This setting enables the user to set input method list.

Use colon as a separator for multiple entries.

For example:

com.android.hsm.sip/.SIPSoftKeyboard:com.android.inputmethod.pinyin/.PinyinIME.

Value

com.android.hsm.sip/.SIPSoftKeyboard:com.android.inputmethod.pinyin/.PinyinIME.

Toggle Virtual Keyboard

Enable this setting to switch to toggle virtual keyboard.

Value

Disable

(Applicable for Android 9, 10, 11, 12, 13 on CT60/CT60XP, CT40/CT40XP, CT45/CT45XP, and CT30 XP devices)

Text to Speech

TTS Default Rate

Set the Text to Speech (TTS) default rate of the device to a desired level.

The text to speech default rate ranges from 0 to 8.

Select a desired value from the drop-down list box provided.

- 0 - Very slow
- 1 - Slow
- 2 - Normal
- 3 - Fast
- 4 - Faster
- 5 - Very Fast
- 6 - Rapid
- 7 - Very Rapid
- 8 - Fastest

Value

2

Location

WiFi Scan Always Enabled

This setting controls the device to always keep scanning for available WiFi networks.

Select a desired option from the drop-down list box provided.

The setting has two options:

- **Enable** will activate the WiFi Scan Always Enabled on the device.
- **Disable** will deactivate the WiFi Scan Always Enabled on the device.

Value

Enable

Bluetooth Low Energy Scan Always Enabled

This setting allows the user to set whether to keep Bluetooth Low Energy Scan always enabled or not.

Select a desired option from the drop-down list box provided.

The setting has two options:

- **Enable** will activate the Bluetooth Low Energy Scan Always Enabled on the device.
- **Disable** will deactivate the Bluetooth Low Energy Scan Always Enabled on the device.

Value

Enable

Location Settings

Select the Location Mode. These options are available in Android N and O. The three options other than "off" will make the Location Mode on in Android 9.

There are 4 options available for this setting.

- Off
- Sensors only
- Location providers allowed
- High accuracy

Printing Configuration

Enable Cloud Print Service

This setting is used to set whether to enable cloud print service or not.

Select a desired option from the drop-down list box provided.

The setting has two options:

- **Enable** will activate the Enable Cloud Print Service on the device.
- **Disable** will deactivate the Enable Cloud Print Service on the device.

Value

Enable

Screen Lock Settings

Use these options to set Screen Lock related settings.

None

Enter 1 to set screen lock to None.

Note: For 9 and above Android versions, enter 'Saved Screen Lock Password' to make this setting take effect.

Saved Screen Lock Password

Set current saved password, default is 0000. (Supported on 9 and above Android versions).

Secure Start-Up Enabled

Set whether to enable Secure start-up or not. If enabled, screen lock PIN is required to start your device. (Supported on 10 and above Android versions).

Password Quality

Set password quality.

Screen Lock Password

Set screen lock pin, at least 4 numbers.

Note: For 9 and above Android versions, enter 'Saved Screen Lock Password' to set new PIN.

Clear Screen Lock Password

Enter 1 to clear the Screen Lock.

Note: For 9 and above Android versions, enter 'Saved Screen Lock Password' to make this setting take effect.

Security

Automatically lock

Use this setting to lock the device in the configured amount of time in milliseconds (ms) after the screen goes off.

The setting has the following options:

- 0
- 5000
- 15000
- 30000
- 60000
- 120000
- 300000
- 600000
- 1800000

Value

5000

Lock on Power Key Press Always Enabled

This setting enables the device to lock on pressing power key on the device.

Select a desired option from the drop-down list box provided.

The setting has two options:

- **Enable** will activate the Lock on Power Key Press Always Enabled on the device.
- **Disable** will deactivate Lock on Power Key Press Always Enabled on the device.

Value

Enable

Silently Activate Device Admin Applications

Set the application package names where the packages can be enabled as device admin without user intervention. Packages are separated by a colon (:), for example, <com.application1:com.application2>.

Show Password Enabled

This setting is used to enable or disable to show password characters in text editors or not.

Select a desired option from the drop-down list box provided.

The setting has two options:

- **Enable** will activate Show Password Enabled on the device.
- **Disable** will deactivate Show Password Enabled on the device.

Value

Enable

Users

Add Users From Locked Screen Enabled

This setting is used to determine whether users are allowed to add more users or guest from lockscreen or not.

Select a desired option from the drop-down list box provided.

The setting has two options:

- **Enable** will activate Add Users From Lock Screen Enabled on the device.
- **Disable** will deactivate Add Users From Lock Screen Enabled on the device.

Value

Enable

Sound and Notification Settings

Haptic Feedback Enabled

This setting is used to enable vibration on the device when soft keys are pressed and on certain UI (User Interface) interactions.

Select a desired option to be configured to the device from the drop-down list box provided.

The setting has two options:

- **Enable** will activate the Haptic Feedback on the device.
- **Disable** will deactivate the Haptic Feedback on the device.

Value

Enable

Alarm Volume

This setting enables the user to set the Alarm Volume on the device to a desired level.

You can type a desired value in the text box provided. The valid alarm volume ranges from 0 to 7.

Value

5

Music Volume

This setting enables the user to set the Music Playback Volume on the device to a desired level. The valid alarm volume ranges from 0 to 7.

You can type a desired value in the text box provided.

Value

5

Ring Volume

This setting enables the user to set the Ring Volume on the device to a desired level. The valid alarm volume ranges from 0 to 7.

You can type a desired value in the text box provided.

Value

5

Call Volume

This setting enables the user to set the Call Volume on the device to a desired level. The valid volume ranges from 0 to 5.

You can type a desired value in the text box provided.

Value

3

Vibrate When Ringing

This setting controls the vibration option on the device during an incoming call.

Select a desired option to be configured to the device from the drop-down list box provided.

The setting has two options:

- **Enable** will activate the Vibrate When Ringing option on the device.
- **Disable** will deactivate the Vibrate When Ringing option on the device.

Value

Enable

Notification Sound

This setting is used to set the Notification Sound on the device.

The system supports the Notification sound in two formats:

- Format 1 starts with "**content://**" which indicates system-wide default sound.
- Format 2 starts with "**file://**" which indicates the audio file from storage area.

Value

For example:

1. content://media/internal/audio/media/96
2. file://volume/audio/1.mp3

Ringtone Sound

This setting is used to set the Ring Tone on the device.

The system supports the Ring tone in two formats:

- Format 1 starts with "**content://**" which indicates system-wide default sound.
- Format 2 starts with "**file://**" which indicates that audio file from storage area.

Value

For example:

1. content://media/internal/audio/media/174
2. file://volume/audio/12.mp3

DTMF Tone Enabled

This setting is used to turn on the sounds for dial pad on the device.

Select a desired option to be configured to the device from the drop-down list box provided.

The setting has two options:

- **Enable** will activate the DTMF Tone on the device.
- **Disable** will deactivate the DTMF Tone on the device.

Value

Enable

(Applicable for Android 7 and higher.)

Sound Effects Enabled

This setting is used to turn on the sounds for screen selections on the device.

Select a desired option to be configured to the device from the drop-down list box provided.

The setting has two options:

- **Enable** will activate the Sound Effects on the device.
- **Disable** will deactivate the Sound Effects on the device.

Value

Enable

Lockscreen Sounds Enabled

This setting is used to turn on the sound for screen lock on the device.

Select a desired option to be configured to the device from the drop-down list box provided.

The setting has two options:

- **Enable** will activate the Lockscreen Sounds on the device.
- **Disable** will deactivate the Lockscreen Sounds on the device.

Value

Enable

Charging Sounds Enabled

This setting enables the sound notification when the device is plugged for charging.

Select a desired option to be configured to the device from the drop-down list box provided.

The setting has two options:

- **Enable** will activate the Charging Sounds on the device.
- **Disable** will deactivate the Charging Sounds on the device.

Value

Enable

Disable the Notification for Packages

Blocks the notification for specified packages. For multiple packages separate like com.org.app1:com.org.app2.

(Not applicable for Android 7)

Enable the Notification for Packages

Enables the notification for specified packages and disables all the other notifications. For multiple packages separate like com.org.app1:com.org.app2.

(Applicable for Android 9, 10, 11)

Global Freeze Notification

Freezes the notification for all packages, set 1 to freeze all notifications, set 0 to use Freeze Notification configuration.

Freeze Notification

Freeze notification for packages. For multiple packages separate like com.org.app1:com.org.app2.

Clear Freeze Notification List

Set 1 to clear all current freeze notification configurations.

Clear Disable Notification List

Set 1 to clear all current disabled notification configurations.

Clear Enable Notification List

Set 1 to clear all current enabled notification configurations.

Default: 0 = Disabled

Allow Notification dots

Set value (1 or 0) to activate/deactivate allow notification dots.

Default: 1 = Enabled

Enable Led Light on ScreenOn

Set 1 to enable LED notification light on ScreenOn and 0 to disable.

Default: 0 = Disabled

Disable Physical Keyboard Notification

Set 1 to disable physical keyboard notification and 0 to enable.

Default: 0 = Disabled

Shortcut to prevent ringing

Set value for Shortcut to prevent ringing. 0-Off, 1-Vibrate, 2-Mute.

Default: 1 = Vibrate

Show Notifications On Locked Screen Enabled

This setting allows the user to enable or disable the display of notifications on the screen when the device screen is locked.

Select a desired option from the drop-down list box provided.

The setting has two options:

- **Enable** will activate the Show Notifications on Locked Screen option on the device.
- **Disable** will deactivate the Show Notifications on Locked Screen option on the device.

Value

Enable

Alarm Sound Setting

Set alarm sound By Name or By URI.

Default: By Name

Alarm Sound By URI

Use an alarm sound from an audio file on the device. Enter a URI that points to the audio file, for example, `\file://volume/audio/1.mp3\`. The URI begins with `\file://\` to indicate that the audio file is from the storage area, e.g., volume=ipsm,internal,sdcard.

Note: Set Alarm Sound Setting to "By URI."

(Not applicable for Android 8.)

Alarm Sound By Name

Define the alarm tone using the name of the alarm sound, for example, Carbon, Cesium, Oxygen, etc.

Note: Set Alarm Sound Setting to "By Name."

(Not applicable for Android 8.)

Enable Sync for all volumes

Enable or disable to all sync of all volumes (Notification, Media, etc.).

(Applicable for hon4290 and hon660 devices on Android 11.)

Volume sync min

Set the minimum volume sync value. Value should be from 0 to 3.

(Applicable for hon4290 and hon660 devices on Android 11.)

Volume sync max

Set the maximum volume sync value. Value should be from 3 to 7.

(Applicable for hon4290 and hon660 devices on Android 11.)

Sync volume level

Set the volume value in the range of Volume sync min and Volume sync max..

(Applicable for hon4290 and hon660 devices on Android 11.)

Notification sound over bt headset when voip active

Enable to allow notification sound over a Bluetooth headset during a VoIP call.

Value

Disable

(Applicable for hon4290 and hon660 devices on Android 11 or higher.)

Audio feature for Compress_VOIP

Select Enable to turn on Audio feature for Compress_VOIP or Disable to turn off.

Value

Disable

(Applicable for hon4290 devices on Android 11 or 13)

TTS Audio Output Mode

When Disable is selected, the audio mode will automatically change from Communication mode to Normal mode after six seconds. When Enable is selected, the audio mode will not automatically change.

Value

Disable

(Applicable for Hon660 devices on Android 11 or 12 and Hon6490 devices on Android 13 or 14)

Power Mode Settings

Power Mode

Set the Power mode.

Note: Applicable only for VM devices (VM1A, VM3A).

The setting has five options:

- Auto
- AC or DC Mode
- Ignition Control Mode
- UPS Mode
- Ignition Control Losing Mode

Value

Auto

Switch State to Sleep (Auto)

This setting is used to set the inactivity timeout for sleep mode. The device will go into sleep mode after the defined amount of inactivity.

Note: Applicable only for VM devices (VM1A, VM3A).

Select a desired Timeout Value to be configured to the device from the drop-down list box provided.

The setting has ten options:

- Never
- 5 seconds
- 15 seconds
- 30 seconds
- 1 minute
- 2 minutes
- 5 minutes
- 10 minutes
- 30 minutes
- 1 hour

Value

30 minutes

Switch State to Shutdown (Auto)

This setting is used to set the inactivity timeout to shut down. The device will shut down after the defined amount of inactivity.

Note: Applicable only for VM devices (VM1A, VM3A).

Select a desired Timeout Value to be configured to the device from the drop-down list box provided.

The setting has sixteen options.

- Never
- 1 minute
- 2 minutes
- 3 minutes
- 5 minutes
- 10 minutes
- 15 minutes
- 20 minutes
- 25 minutes
- 30 minutes
- 45 minutes
- 1 hour
- 2 hours
- 3 hours

- 4 hours
- 5 hours

Value

Never

Switch State to Sleep (ACDC)

This setting is used to set the inactivity timeout for sleep mode. The device will go into sleep mode after the defined amount of inactivity.

Note: Applicable only for VM devices (VM1A, VM3A).

Select a desired Timeout Value to be configured to the device from the drop-down list box provided.

The setting has ten options:

- Never
- 5 seconds
- 15 seconds
- 30 seconds
- 1 minute
- 2 minutes
- 5 minutes
- 10 minutes
- 30 minutes
- 1 hour

Value

30 minutes

Switch State to Shutdown (ACDC)

This setting is used to set the inactivity timeout to shut down. The device will shut down after the defined amount of inactivity.

Note: Applicable only for VM devices (VM1A, VM3A).

Select a desired Timeout Value to be configured to the device from the drop-down list box provided.

The setting has sixteen options.

- Never
- 1 minute
- 2 minutes
- 3 minutes
- 5 minutes
- 10 minutes
- 15 minutes
- 20 minutes
- 25 minutes
- 30 minutes
- 45 minutes
- 1 hour
- 2 hours
- 3 hours
- 4 hours
- 5 hours

Value

Never

Switch State to Sleep (Ignition)

This setting is used to set the inactivity timeout for sleep mode. The device will go into sleep mode after the defined amount of inactivity.

Note: Applicable only for VM devices (VM1A, VM3A).

Select a desired Timeout Value to be configured to the device from the drop-down list box provided.

The setting has ten options:

- Never
- 5 seconds
- 15 seconds
- 30 seconds
- 1 minute
- 2 minutes
- 5 minutes
- 10 minutes
- 30 minutes
- 1 hour

Value

30 minutes

Switch State to Shutdown (Ignition)

This setting is used to set the inactivity timeout to shut down. The device will shut down after the defined amount of inactivity.

Note: Applicable only for VM devices (VM1A, VM3A).

Select a desired Timeout Value to be configured to the device from the drop-down list box provided.

The setting has sixteen options.

- Never
- 1 minute
- 2 minutes
- 3 minutes
- 5 minutes
- 10 minutes

- 15 minutes
- 20 minutes
- 25 minutes
- 30 minutes
- 45 minutes
- 1 hour
- 2 hours
- 3 hours
- 4 hours
- 5 hours

Value

Never

Switch State to Sleep (UPS)

This setting is used to set the inactivity timeout for sleep mode. The device will go into sleep mode after the defined amount of inactivity.

Note: Applicable only for VM devices (VM1A, VM3A).

Select a desired Timeout Value to be configured to the device from the drop-down list box provided.

The setting has ten options:

- Never
- 5 seconds
- 15 seconds
- 30 seconds
- 1 minute
- 2 minutes
- 5 minutes
- 10 minutes
- 30 minutes
- 1 hour

Value

30 minutes

Switch State to Shutdown (UPS)

This setting is used to set the inactivity timeout to shut down. The device will shut down after the defined amount of inactivity.

Note: Applicable only for VM devices (VM1A, VM3A).

Select a desired Timeout Value to be configured to the device from the drop-down list box provided.

The setting has sixteen options.

- Never
- 1 minute
- 2 minutes
- 3 minutes
- 5 minutes
- 10 minutes
- 15 minutes
- 20 minutes
- 25 minutes
- 30 minutes
- 45 minutes
- 1 hour
- 2 hours
- 3 hours
- 4 hours
- 5 hours

Value

Never

Switch State to Sleep (Ignition Lost)

This setting is used to set the inactivity timeout for sleep mode. The device will go into sleep mode after the defined amount of inactivity.

Note: Applicable only for VM devices (VM1A, VM3A).

Select a desired Timeout Value to be configured to the device from the drop-down list box provided.

The setting has ten options:

- Never
- 5 seconds
- 15 seconds
- 30 seconds
- 1 minute
- 2 minutes
- 5 minutes
- 10 minutes
- 30 minutes
- 1 hour

Value

30 minutes

Switch State to Shutdown (Ignition Lost)

This setting is used to set the inactivity timeout to shut down. The device will shut down after the defined amount of inactivity.

Note: Applicable only for VM devices (VM1A, VM3A).

Select a desired Timeout Value to be configured to the device from the drop-down list box provided.

The setting has sixteen options.

- Never
- 1 minute
- 2 minutes
- 3 minutes
- 5 minutes
- 10 minutes

- 15 minutes
- 20 minutes
- 25 minutes
- 30 minutes
- 45 minutes
- 1 hour
- 2 hours
- 3 hours
- 4 hours
- 5 hours

Value

Never

Unattended Mode

This setting is used to set whether to enable or disable unattended mode on the device.

Select a desired option to be configured to the device from the drop-down list box provided.

The setting has two options:

- **Enable** will activate the Unattended Mode on the device.
- **Disable** will deactivate the Unattended Mode on the device.

Note: It is depreciated. Please use Doze mode for recent releases.

Value

Enable

Honeywell Power Settings

Honeywell Power Settings are applicable for RT10A tablets only.

Power Mode Disable

Set Power Mode Disable. Select Enable to enable the setting or disable to disable it.

Note: Applicable only for RT10A.

Value

Disable

Switch Vehicle State to Sleep On

This setting is used to set the inactivity timeout for sleep mode. The device will go into sleep mode after the defined amount of inactivity.

Note: Applicable only for RT10A.

Select a desired Timeout Value to be configured to the device from the drop-down list box provided.

The setting has ten options:

- Never
- 5 seconds
- 15 seconds
- 30 seconds
- 1 minute
- 2 minutes
- 5 minutes
- 10 minutes
- 30 minutes
- 1 hour

Value

30 minutes

Switch Vehicle State to Sleep Off

This setting is used to set the inactivity timeout for sleep mode. The device will go into sleep mode after the defined amount of inactivity.

Note: Applicable only for RT10A.

Select a desired Timeout Value to be configured to the device from the drop-down list box provided.

The setting has ten options:

- Never
- 5 seconds
- 15 seconds
- 30 seconds
- 1 minute
- 2 minutes
- 5 minutes
- 10 minutes
- 30 minutes
- 1 hour

Value

30 minutes

Switch Vehicle State to Shutdown

This setting is used to set the inactivity timeout to shut down. The device will shut down after the defined amount of inactivity.

Note: Applicable only for RT10A.

Select a desired Timeout Value to be configured to the device from the drop-down list box provided.

The setting has ten options.

- Never
- 1 minute
- 2 minutes
- 5 minutes
- 10 minutes
- 30 minutes
- 45 minutes
- 1 hour
- 2 hours
- 5 hours

Value

Never

Web Applications SDK

Port

This setting is used to provide the Port Number on the device.

You can type a desired value in the text box provided.

Value

6060

Enabled

This setting is used to enable or disable the Web Interface Settings.

Select a desired option to be configured to the device from the drop-down list box provided.

The setting has two options:

- **Enable** will activate the Web Interface Settings on the device.
- **Disable** will deactivate the Web Interface Settings on the device.

Value

Enable

Accessibility

Accessibility Display Magnification Enabled

This setting is used to enable or disable Accessibility Display Magnification on the device.

Select a desired option from the drop-down list box provided.

The setting has two options:

- **Enable** will activate the Accessibility Display Magnification on the device.
- **Disable** will deactivate the Accessibility Display Magnification on the device.

Value

Enable

Accessibility Enabled

This setting is used to enable or disable setting accessibility.

The setting has two options:

- **Enable** will allow setting accessibility.
- **Disable** will deactivate setting accessibility.

Value

Disable

(Applicable for Android 9 and higher.)

Accessibility Shortcut Enabled

This setting is used to specify if the accessibility shortcut is enabled.

The setting has two options:

- **Enable** will activate the accessibility shortcut.
- **Disable** will deactivate the accessibility shortcut.

Value

Disable

(Applicable for Android 9 and higher.)

Accessibility Shortcut Target Service

Specifies the accessibility service to be toggled via the accessibility shortcut.

Enter a value like:

com.google.android.marvin.talkback/com.google.android.accessibility.selecttospeak.

SelectToSpeakService

(Applicable for Android 9 and higher.)

Accessibility Shortcut Dialog Shown

Setting specifying if the accessibility shortcut dialog has been shown to this user.

The setting has two options:

- **Enable** indicates the accessibility shortcut dialog has been shown to this user.
- **Disable** indicates the accessibility shortcut dialog has not been shown to this user.

Value

Disable

(Applicable for Android 9 and higher.)

Accessibility Shortcut on Lock Screen

Setting to allow feature shortcut to turn on from the lock screen.

The setting has two options:

- **Enable** allow the accessibility shortcut from the lock screen.
- **Disable** will deactivate the accessibility shortcut from the lock screen.

Value

Disable

(Applicable for Android 9 and higher.)

Enabled accessibility services

List of the enabled accessibility providers.

The setting has two options:

- **Enable** allows list of enabled accessibility providers.
- **Disable** will deactivate list of accessibility providers.

Value

Disable

(Applicable for Android 9 and higher.)

tts_default_synth

Default text-to-speech engine.

Enter a value like: com.google.android.tts.

(Applicable for Android 9 and higher.)

High Text Contrast Enabled

This setting enables or disables whether to draw text with high contrast while in accessibility mode. Select a desired option from the drop-down list box provided.

The setting has two options:

- **Enable** will activate the High Text Contrast on the device.
- **Disable** will deactivate the High Text Contrast on the device.

Value

Enable

In-Call Power Button Behavior

This setting controls the behavior of the power button while on call and the screen is on. Pressing the power button while on call will end the call.

Select a desired option from the drop-down list box provided.

The setting has two options:

- **Enable** will activate the In-Call Power Button Behavior on the device.
- **Disable** will deactivate the In-Call Power Button Behavior on the device.

Value

Enable

Long Press Timeout

This setting provides options to increase or decrease the time duration for a touch on the screen to register as a touch and hold action.

Select a desired option from the drop-down list box provided.

The setting has two options:

- Short
- Medium
- Long

Value

Short

Accessibility Display Inversion

This setting is used to enable or disable Accessibility Display Inversion on the device.

Select a desired option from the drop-down list box provided.

The setting has two options:

- **Enable** will activate the Accessibility Display Inversion on the device.
- **Disable** will deactivate the Accessibility Display Inversion on the device.

Value

Enable

Accessibility Display Remove Animations

This setting is used to enable or disable the Remove Animations option on the Accessibility menu.

- **1** Enable - Makes Remove Animations available on the menu.
- **0** Disable - Hides Remove Animations option on the menu.

Value

0

(Not applicable for Android 8)

Accessibilty Captioning

This feature provides option whether to enable Caption (Timed text) on video content or not.

Select a desired option from the drop-down list box provided.

The setting has two options:

- **Enable** will activate the Accessibility Captioning on the device.
- **Disable** will deactivate the Accessibility Captioning on the device.

Value

Enable

Accessibility Captioning Locale

This setting is used to select a valid input for Caption Locale on the device.

Select a desired option from the drop-down list box provided.

Value

Bodo (India)

Accessibility Captioning Font Scale

This setting is used to select valid input for Accessibility Captioning Font Scale on the device.

Select a desired option from the drop-down list box provided.

The setting has five options:

- 0.25
- 0.5
- 1
- 1.5
- 2

Value

0.25

Accessibility Display Daltonizer

Accessibility Display Daltonizer is a color correction setting which is used to modify color space adjustment on the device.

Select a desired option from the drop-down list box provided.

The setting has two options:

- **Enable** will activate the Accessibility Display Daltonizer on the device.
- **Disable** will deactivate the Accessibility Display Daltonizer on the device.

Value

Enable

Accounts

Data Auto-Sync

Data Auto-Sync enables to synchronize app data across multiple devices automatically. In other words, you open an app in one device and pick up exactly where you left on another.

This setting is used to enable or disable Data Auto-Sync on the device.

Select a desired option from the drop-down list box provided.

The setting has two options:

- **Enable** will activate the Data Auto-Sync on the device.
- **Disable** will deactivate the Data Auto-Sync on the device.

Value

Enable

Battery

Battery Upper Limit

This setting is used to provide the value of Upper Limit for Battery on the device as a percentage. You can type a desired value in the text box provided.

When you charge your device, as soon as battery actually reaches the Upper Limit %, it will show 100% in the view.

Value

100

Battery Lower Limit

This setting is used to provide the value of Lower Limit for Battery on the device as a percentage. You can type a desired value in the text box provided.

When you remove device from the charge, the battery percentage will be according to the lower limit and upper limit as per this formula:

If $(A \geq UL)$ $R = 100 \%$ else if $(A \leq LL)$ $R = A$ else $R = (100-LL) * (A-LL) / (UL-LL) + LL$

where ,

A - Actual battery

UL - Upper Limit

LL - Lower Limit

Value

10

Open or Close Battery NI Check

Set "true" to open or "false" to close.

Value

For CK65 and CT60 mobile devices, the default is true. For all other devices, the default is false.

(Applicable for Android 9 and higher)

UPS30BAY

This setting is used to show or hide UPS30BAY. Show power as always on when in the 30bay and Hide to show actual power state.

This setting has two options:

- **Show** – Show UPS30BAY.
- **Hide** – Hide UPS30BAY.

This is only applicable for the wireless 30Bay.

(Applicable only for CN85 devices with Android 11, Android 13 and higher)

Enable Fast Charge

This setting is used to enable or disable fast charge (supported on Android 9).

This setting has two options.

- **Enable** – Enable fast charge.
- **Disable** – Disable fast charge.

Show Battery Percentage

Set 1 to show battery percentage in the status bar and 0 to hide it.

Default: 0 = Disabled

(Not applicable for Android 7)

Enable Battery Logs

Select Enable to enable the battery logs and Disable to disable the logs. Stop service to disable the battery service. In order for the option to stop service to take effect, a reboot is required.

Default: Disabled

(Applicable only for CN85 devices with Android 11, Android 13 and higher)

High temperature warning threshold

Set threshold device battery temperature in degrees Celsius (C) so that a warning dialog will pop up when the device battery temperature reaches the defined threshold value. Thereafter, a warning dialog will pop up for every 1°C increase in battery temperature. Range is 45 to 60. Usually if the device battery temperature reaches 60°C, a warning dialog does not show up because the device is powered off.

Default: 57

(Applicable only for Hon6490)

Disable Notify Battery Saver

Select to enable or disable the Notify Battery Saver option..

Default: Disable

(Applicable for Android 10, 11, 12)

Sensors

Keep Device Awake on Motion Detection

This setting enables to keep the display of the device ON when motion is detected.

Select a desired option from the drop-down list box provided.

Note: This setting is not applicable for VM1A.

The setting has two options:

- **Yes** will enable the Keep Device Awake on Motion Detection option on the device.
- **No** will disable the Keep Device Awake on Motion Detection option on the device.

Value

Yes

Wake Device Up on Motion Detection

This setting enables to wake up when any motion on the device is detected.

Note: This setting is not applicable for VM1A.

Select a desired option from the drop-down list box provided.

The setting has two options:

- **Yes** will enable the Wake Device Up on Motion Detection option on the device.
- **No** will disable the Wake Device Up on Motion Detection option on the device.

Value

Yes

Suspend Device When Face Down

This setting turns the screen off automatically when you put the device into your pocket or onto a table. The feature helps to improve battery life by turning off the display when not in use.

Note: This setting is not applicable for VM1A.

Select a desired option from the drop-down list box provided.

The setting has two options:

- **Yes** will enable the Suspend Device When Face Down option on the device.
- **No** will disable the Suspend Device When Face Down option on the device.

Value

Yes

Screen Off when device is in pocket

Select Enable to turn the screen off and select Disable to ignore.

The setting has two options:

- **Yes** - The screen will turn off when the user puts the device in their pocket.
- **No** - The screen will not turn off when the user puts the device in their pocket.

Value

No

(Applicable only for Hon6490)

Developer Settings

Bluetooth HCI Log

This setting enables Bluetooth HCI snoop log configuration on the device.

Select a desired option from the drop-down list box provided.

The setting has two options:

- **Enable** will activate the Bluetooth HCI Log option on the device.
- **Disable** will deactivate the Bluetooth HCI Log option on the device.

Value

Enable

Bug report enabled

Enable or disable the option to have a bug report command in the power menu.

- **1** - enable the Bug Report command.
- **0** - disable the Bug Report command.

Value

Disable

(Applicable for Android 8 and higher)

Enable Bug Report

This setting allows the user to enable or disable bug reporter service on the device.

Note: This setting is not applicable for VM1A.

Select a desired option from the drop-down list box provided. The setting has two options:

- **Enable** will activate the Bug Report option on the device.
- **Disable** will deactivate the Bug Report option on the device.

Value

Enable

Enable View Attributes

This setting controls whether views are allowed to save their attribute data or not.

Select a desired option from the drop-down list box provided. The setting has two options:

- **Yes** will enable the Enable View Attributes option on the device.
- **No** will disable the Enable View Attributes option on the device.

Value

Yes

Enable Show Taps

This setting controls whether to show touch positions on screen or not.

Select a desired option from the drop-down list box provided.

The setting has two options:

- **Yes** will enable the Enable Show Taps option on the device.
- **No** will disable the Enable Show Taps option on the device.

Value

Yes

Show Pointer Location

This setting controls whether to show pointer locations onscreen or not.

Select a desired option from the drop-down list box provided.

The setting has two options:

- **Yes** will enable the Show Pointer Location option on the device.
- **No** will disable the Show Pointer Location option on the device.

Value

Yes

USB Audio Automatic Routing Disabled

This setting allows the user to set whether automatic routing of system audio to USB audio peripheral should be disabled or not. Select a desired option from the drop-down list box provided.

The setting has two options:

- **Yes** will enable the Anonymous Identity setting on the device.
- **No** will disable the Anonymous Identity setting on the device.

Value

Yes

Enable All ANR Visibility

This setting enables the device to show all invisible Application Not Responding (ANRs) running in the background in a dialog box.

Select a desired option from the drop-down list box provided.

- **Enable** will activate the Enable All ANR Visibility feature on the device.
- **Disable** will deactivate the Enable All ANR Visibility feature on the device.

Value

Enable

Aggressive WiFi To Mobile Handover

This setting allows the user to set whether to enable aggressive handover of WiFi to cellular data connection when WiFi signal is low or not.

Note: This setting is supported on operating systems below Android 9.

Select a desired option from the drop-down list box provided.

The setting has two options:

- **Enable** will activate the Aggressive WiFi To Mobile Handover option on the device.
- **Disable** will deactivate the Aggressive WiFi To Mobile Handover option on the device.

Value

Enable

Keep Mobile Data Always Active

This setting is used to set whether to keep cellular data always active or not on the device.

Select a desired option from the drop-down list box provided.

The setting has two options:

- **Yes** will enable the Keep Mobile Data Always Active option on the device.
- **No** will disable the Keep Mobile Data Always Active option on the device.

Value

Yes

Boot From Charger Mode

This setting is used to set whether to enable boot from charger mode or not on the device.

Select a desired option from the drop-down list box provided.

The setting has two options:

- **Enable** will activate the Boot From Charger Mode on the device.
- **Disable** will deactivate the Boot From Charger Mode on the device.

Value

Disable

(Applicable for Android 8 and higher)

Enable ADB

This setting is used to control your device over USB from a computer, copy files back and forth, install and uninstall apps, run shell commands and more.

Select a desired option from the drop-down list box provided.

The setting has two options:

- **Enable** will activate the Enable ADB on the device.
- **Disable** will deactivate the Enable ADB on the device.

Value

Enable

Hupgrader Settings

HUpgrader Custom Enable

Set value 1 to enable or 0 to disable Hupgrader custom mode.

Default: 0 = Disabled

HUpgrader Operating Mode

Set the operating mode to 1 for Upgrade or 0 for Downgrade.

Default: 1 = Upgrade

HUpgrader Server URL

The URL of the server to connect to for OTA updates. Both “http” and “https” are supported.

If the URL ends with a “.zip” extension, HUpgrader interprets the URL as the OTA upgrade to apply to the device.

If the URL ends with an “.html” extension, HUpgrader interprets the URL as a manifest file. HUpgrader will download and parse the manifest file looking for HTML anchor tags with the format href="example_ota.zip" or href="next.html". “.zip” extension anchor tags are interpreted as a candidate OTA. “.html” extension anchor tags are interpreted as the next manifest to download and parse looking for more HTML anchor tags.

If the URL ends with “directory.json”, HUpgrader interprets the URL as another type of manifest file. HUpgrader will download the file directory.json and look for the

newest OTA version to apply to the device. If the Upgrade Major setting is enabled, only full OTAs that will upgrade the device to the next major Android version are applied. If the Hupgrader Custom Enable setting is disabled, full and incremental OTAs that will upgrade the device's current Android version are considered.

HUpgrader Server Downgrade URL

The downgrade URL HUpgrader checks for OS/Software to download. http and https schemes are supported. The downgrade URL must be an absolute URL. That is, the URL contains both the domain name and the directory/page path. For example, http://www.example.com/path/to/downgrade_ota.zip.

HUpgrader Downgrade Password

The password to allow an OS downgrade.

Both the HUpgrader Downgrade Password and HUpgrader Server Downgrade URL must be configured. If only the password is configured, HUpgrader will display an error. If only the downgrade URL is configured, the Downgrade option will not be active in Settings.

HUpgrader Del After Upgrade

Set a value to keep or delete the OTA file after the upgrade is completed. Select 1 to delete the OTA file or 0 to keep the OTA file.

Default: 0 = Disabled

HUpgrader Battery Threshold

Installs the upgrade only when the battery charge is above the specified percentage. Valid values are between 0 to 100.

Default: 20

HUpgrader Time Sharing

The time in minutes that HUpgrader will wait to begin to download the OS from the server after an upgrade is detected.

Valid values are from 0 to 180 minutes.

Default: 0

HUpgrader Check on Bootup

Check for available OS updates on every boot up of the device.

Default: 0 = Disabled

HUpgrader Check on Intent

Check for available OS updates when an intent is sent to the device.

The command to send the intent is:

```
adb shell am broadcast -a com.honeywell.action.INTENT_CHECK -f 0x01000000
```

Where:

The -f parameter 0x01000000 is the value of

`android.content.Intent.FLAG_RECEIVER_INCLUDE_BACKGROUND`

Default: 0 = Disabled

HUpgrader Alarm

Sets an HUpgrader alarm to specific times such as 8:00 or 14:00. When the alarm time is reached, HUpgrader will check if OS/Software is available for download from the custom server. Alarm times use the 24-hour clock and the UTC time zone.

HUpgrader Reboot After OS/Software Upgrade

Allow HUpgrader to reboot the device after the upgrade is completed.

Default: 0 = Disabled

HUpgrader Defer Reboot

When this setting is enabled, the mobile computer user will be allowed to defer the reboot of the device.

Default: 0 = Disabled

HUpgrader Maximum Reboot Deferrals

The maximum number of times the user will be allowed to defer rebooting the mobile computer after an OS update.

Default: 3

HUpgrader Defer Reboot Units

Set the defer reboot unit to Hours or Minutes.

Default: 0 = Hours.

HUpgrader Defer Reboot Count (in Hours or Minutes)

When the defer reboot unit is Minutes, set the reboot interval from 1 to 59 minutes. When the defer reboot unit is Hours, set the reboot interval from 1 to 8 hours.

Default: Minutes = 30; Hours = 1

HUpgrader Upgrade Major

When this setting is turned on, the Android OS on the device can only be upgraded to the next major version (i.e., from 11 to 12). When this setting is turned off, the device will install both major and incremental upgrades to the existing version (i.e., from 11 to 12 or from 11.1 to 11.2).

0=Disable, 1=Enable

Default: 1 = Enabled

HUpgrader Check on Interval

Check for available OS updates based on a configured interval.

Default: 0 = Disabled

HUpgrader Check on Interval Units

Set the check on interval unit to either Days or Hours.

Default: 0 = Days

HUpgrader Check on Interval Count (in Days or Hours)

The number of hours or days for the check interval. Valid values are 1 to 7 for Days or 1 to 24 for Hours.

Default: Days =1; Hours = 8

HUpgrader Install Time

Sets the install window time during which the OS installation takes place. Even if the OS package is downloaded at the time set by hupgrader_alarm, the installation will only occur during this install window. The start time must be earlier than the end time. Install window times use the 24-hour clock and the UTC time zone, with time values separated by a semicolon. For example, if the value is set to 06:27-07:31, the installation of the OS/software will start only between 06:27 and 07:31.

(Applicable for Android 11, 12, 13)

HUpgrader download network type

Sets the value to specify network options to allow download of OS/Software.

- 0 - Wi-Fi only
- 1- Mobile only
- 2- Ethernet only
- 3- Wi-Fi+Mobile
- 4- Wi-Fi+Ethernet
- 5- Mobile+Ethernet
- 6- All types.

(Applicable for Android 11, 12, 13)

SYSTEM UPDATE SETTINGS

OS Update Package URL

Specify a URL with a specific OS firmware update package to download and install. The OTA (Over-The-Air) package filename in the URL must be the same as that provided by Honeywell and cannot be changed.

Value

URL Protocols supported - File, HTTP, HTTPS, FTP and SFTP.

Enable OS Downgrade with Enterprise Reset

This setting will allow or disallow the system firmware downgrades on the device.

Select a desired option from the drop-down list box provided.

The setting has two options:

- **Yes** will allow the system firmware downgrades on the device.
- **No** will disallow the system firmware downgrades on the device.

Note: On some devices, the downgrade operation will also perform a enterprise reset (user storage will be wiped) [Requires FW: 86.xx.13+].

Value

Yes

Data Processing Settings

Data Editing Plugin

Data Editing Plugin specifies the plugin to manipulate the barcode data.

The data editing plug-in interface will display a list of plug-ins (broadcast receivers with EDIT_DATA action) that are installed on the device.

Data Collection Service will obtain all these plugins by querying for receivers that can handle "com.honeywell.decode.intent.action.EDIT_DATA" intent.

Value

None.

A "None" plugin can be selected in case user requires no plugin.

Editing Settings

This setting will navigate the user to the Edit Settings activity in the plugin.

Value

None.

Data Collection Service will check if there exists an activity in the selected plugin to edit the plugin settings.

If edit settings activity is present, then the "Edit Settings" preference is enabled on the device otherwise this option will be disabled.

Data Intent

Action

Action is a string that specifies the generic action to perform. The action determines how the rest of the intent is structured—particularly the information that is contained in the data and extras.

Value

```
ACTION_VIEW = "com.example.action.view"
```

You should use this in an intent when you have some data to view through another app, such as a photo to view in a gallery app, or an address to view in a map app.

Category

Category is a string containing additional information about the kind of component that should handle the intent. Any number of category descriptions can be placed in an intent, but most intents do not require a category.

Value

```
CATEGORY_LAUNCHER
```

Class Name

This setting allows the user to provide a class name on the device.

Enter the Class Name in the text box provided.

Value

```
Democlass
```

Data Intent

The Barcode Data Intent enables the reception and processing of barcode data without using an SDK or library.

To enable or disable the Data Intent settings, select a desired option from the drop-down list box provided.

The setting has two options:

- **True** will activate the Data Intent Settings on the device.
- **False** will deactivate the Data Intent Settings on the device.

Value

False

Package Name

This setting allows the user to provide a package name on the device.

Value

org.example.demo

Charset

Charset controls the Character Set that is supported to interpret barcode binary data on the device.

The user is allowed to select a desired charset from the available list on the device.

Value

ISO-8859-1

Launch Browser

This setting enables the device to launch a browser when barcode data begins with http:// or https://.

If the barcode starts with http:// or https://, the browser opens using the barcode data as a URL.

To enable or disable the Launch Browser setting on the device, select a desired option from the drop-down list box.

The setting has two options:

- **True** will activate the Launch Browser setting on the device.
- **False** will deactivate the Launch Browser setting on the device.

Value

True

Launch EZConfig

This setting allows the user to enable or disable special handling of EZConfig barcodes.

This setting applies to EZConfig barcodes that are encoded with the Aztec symbology and contain specific header data.

To enable or disable Launch EZConfig on the device, select a desired option from the drop-down list box.

The setting has two options:

- **True** will activate Launch EZConfig on the device.
- **False** will deactivate Launch EZConfig on the device.

Value

True

Prefix

This setting allows the user to set the Prefix, which is the text that is prepended to the barcode data.

The user is allowed to set a desired value for prefix which is added to the scanned barcode data automatically.

Value

Examples : \n, \t.

For instance the barcode data scanned by the device is 1DANA#%12 and the prefix set on the device is \n, then the final data that appears in the edit box will be the combination of the prefix and the Scanned data. i.e. \n1DANA#%12.

Scan to Intent

This setting enables the device to launch an app specified by a barcode when data begins with //.

To enable or disable Scan to Intent setting on the device, select a desired option from the drop-down list box.

The setting has two options:

- **True** will activate the Scan to Intent setting on the device.
- **False** will deactivate the Scan to Intent setting on the device.

Value

True

Suffix

This setting allows the user to set the Suffix, which is the text that is appended to the barcode data.

Value

Examples : \n, \t.

For instance the barcode data scanned by the device is 1DANA#%12 and the suffix set on the device is \n, then the final data that appears in the edit box will be the combination of the suffix and the Scanned data. i.e. 1DANA#%12\n.

Symbology Prefix

This setting determines the symbology identifier to be used if any prefix needs to be added to the barcode data.

Select the setting to be configured to the device from the drop-down list box.

The setting has three options:

- **None**
- **Honeywell**
- **AIM**

Value

None

Wedge as keys

This is a list of character values to wedge as keys, represented as a common-separated list of decimal values.

Value

9, 10

Wedge

This setting allows the user to enable or disable the wedge option in the data processing settings.

To enable or disable the Wedge Setting on the device, select a desired option from the drop-down list box.

The setting has two options:

- **True** will activate the Wedge setting on the device.
- **False** will deactivate the Wedge setting on the device.

Value

True

Decode Settings

Center Decode

Center decode setting enables bias decoding to the center window on the device.

This setting is useful in situations where several barcodes may be very close together in the imager field-of-view.

Value

50

This value defines the "center" area of the barcode.

Window Bottom

This setting allows the user to set the Window Bottom value on the device to a desired level. The Window Bottom value ranges from 0 to 100.

You can type a desired Window Bottom value within the range in the text box provided.

Value

50

Window Left

This setting allows the user to set the Window Left value on the device to a desired level. The Window Left value ranges from 0 to 100.

You can type a desired Window Left value within the range in the text box provided.

Value

50

Window Right

This setting allows the user to set the Window Right value on the device to a desired level. The Window Right value ranges from 0 to 100.

You can type a desired Window Right value within the range in the text box provided.

Value

50

Window Top

This setting allows the user to set the Window Top value on the device to a desired level. The Window Top value ranges from 0 to 100.

You can type a desired Window Top value within the range in the text box provided.

Value

50

Decode Security

This setting controls the reading tolerance of the decoder. Lower setting values will be more lenient when reading low quality barcodes while higher values will be stricter.

You can type a desired Decode Security value within the range in the text box provided.

Value

2

Decode Set

This setting allows the user to adjust the decode set properties on the device.

Select the value to be configured to the device from the drop-down list box provided.

Value

None

DPM Mode

This setting specifies whether DPM decoding is enabled during the execution of decode.

Select the DPM mode to be configured to the device from the drop-down list box.

The setting has three options:

- **No DPM Optimization**
- **Dotpeen DPM decoding**
- **Reflective DPM decoding**

Value

No DPM optimization

Region of Interest

This setting allows the user to set the Region of Interest (ROI) that is processed by the decoder.

Select the Region of Interest to be set for decoding.

The setting has five options:

- **Disable** ROI is disabled and the entire original image is sent to the decoder.
- **Standard** Use the aimer position to weight activity. Activity calculated on the row and the column in the middle of each cell. The ROI window may not include the aimer.
- **Standard, aimer centered** Activity calculated on the row and the column in the middle of each cell. The ROI window will always include the aimer.
- **DPM, aimer centered** Activity calculated on 4 rows and 2 columns in each cell. The ROI window will always include the aimer.
- **Kiosk/Presentation application** Ignore aimer position, no weight activity. Activity calculated on the row and the column in the middle of each cell. The ROI window may not include the aimer.

Value

Disable

Video Mode

Video Mode specifies whether normal or inverse decoding for linear symbologies is enabled during the execution of decode.

Select the Video Mode to be configured to the device from the drop-down list box.

The setting has three options:

- **Normal**
- **Inverse**
- **Normal and Inverse**

Value

Normal

Imager Settings

Exposure Mode

This setting configures the device to automatically update exposure to improve image quality.

Select the desired exposure mode to be configured to the device using the drop-down list box.

Value

Context Sensitive Exposure

Exposure (μ s)

This setting determines the exposure time in microseconds when fixed exposure setting is being enabled on the device.

Select an exposure time value to be configured to the device using the up and down arrows inside the spin box provided or the user can also type a valid value within the range.

Value

4800

Gain

This setting determines the sensitivity of image sensor when fixed exposure is enabled on the device.

Select a gain value to be configured to the device using the up and down arrows inside the spin box provided or the user can also type a valid value within the range.

Value

1024

Illumination Intensity

This setting allows the user to set intensity of imager light on the device.

You can type a desired Illumination Intensity value within the range in the text box provided.

Value

100

Maximum Exposure Time (μ s)

This setting determines the Maximum Exposure time in microseconds when automatic exposure is enabled on the device.

You can type a desired Maximum Exposure Time in the text box provided.

Value

60000

Maximum Gain

This setting determines the maximum sensitivity of image sensor when automatic exposure is enabled.

You can type a desired Maximum Gain value within the range in the text box provided.

Value

1024

Override Recommended Values

This setting allows the user to set custom image on the device.

To enable or disable the Override Recommended Values setting on the device, select a desired option from the drop-down list box.

The setting has two options:

- **True** will activate the Override Recommended Values setting on the device.
- **False** will deactivate the Override Recommended Values setting on the device.

Value

False

Rejection Limit

This setting determines the maximum number of images to ignore because of unacceptable exposure result. The valid value ranges from 0 to 100.

You can type a desired Rejection Limit value within the range in the text box provided.

Value

5

Sampling Method

This setting defines how image quality is determined by software controlled exposure modes.

To adjust the Sampling Method on the device, select the desired sampling method to be configured using the drop-down list box provided.

Value

Center Weighted Sampling

Target Acceptable Offset

This setting determines the acceptable difference from target calculated value of image during automated exposure control. The valid value ranges from 0 to 255.

You can type a desired Target Acceptable Offset value within the range in the text box provided.

Value

40

Target Percentile

This setting determines the target percentile of target value for the automatic exposure mode on the device. The valid value ranges from 0 to 100.

You can type a desired Target Percentile value within the range in the text box provided.

Value

97

Target Value

This setting determines the target calculated value of image during automated exposure control. The valid value ranges from 0 to 255.

You can type a desired Target value within the range in the text box provided.

Value

100

Notification Settings

Bad Read Notification

This setting allows the user to enable or disable bad read notification on the device.

The bad read notification consists of a red blink of the Scan Status LED, an error beep, and an optional short vibration.

To enable or disable the Bad Read Notification setting on the device, select a desired option from the drop-down list box.

The setting has two options:

- **True** will activate the Bad Read Notification setting on the device.
- **False** will deactivate the Bad Read Notification setting on the device.

Value

False

Good Read Notification

This setting allows the user to enable or disable good read notification on the device.

The good read notification consists of a green blink of the Scan Status LED, a short beep, and an optional short vibration.

To enable or disable the Good Read Notification setting on the device, select a desired option from the drop-down list box.

The setting has two options:

- **True** will activate the Good Read Notification setting on the device.
- **False** will deactivate the Good Read Notification setting on the device.

Value

True

Vibrate on Notification

This setting allows the user to enable or disable vibration on the device when there is a good or bad read notification.

To enable or disable the Vibrate on Notification setting on the device, select a desired option from the drop-down list box.

The setting has two options:

- **True** will activate the Vibrate on Notification setting on the device.
- **False** will deactivate the Vibrate on Notification setting on the device.

Value

False

Trigger Settings

Same Symbol Timeout

This sets the time period (ms) before the scanner can reread the same barcode in continuous trigger scan mode.

Value

Default: 1000 range 0 to 65535

Enable Same Symbol Timeout

This setting allows the scanner to reread the same barcode after a time interval during continuous scanning.

To enable or disable the Same Symbol Timeout setting on the device, select a desired option from the drop-down list box.

The setting has two options:

- **True** will activate the Same Symbol Timeout setting on the device.
- **False** will deactivate the Same Symbol Timeout setting on the device.

Value

False

Same Symbol Timeout

This setting allows the user to set the time period in seconds before the scanner can reread the same barcode in continuous trigger scan mode.

This can be adjusted to prevent inadvertent scans of the same barcode if the code is left in the scan field longer than the Decode Timeout limit.

You can type a desired Same Symbol Timeout value within the range in the text box provided.

Value

1000 seconds

Decode Timeout

This setting allows the user to set the timeout value in seconds after which the scanner automatically turns off if the scan button is pressed and nothing has successfully decoded.

You can type a desired Decode Timeout value within the range in the text box provided.

Value

20 seconds

Enable Scan Trigger

This setting allows the user to enable or disable activating the imager by pressing the side scan buttons or the virtual scan button in the Scan Demo app.

To enable or disable the Scan Trigger setting on the device, select a desired option from the drop-down list box.

The setting has two options:

- **True** will activate the Scan Trigger setting on the device.
- **False** will deactivate the Scan Trigger setting on the device.

Value

True

Scan Delay

This setting allows the user to set the minimum amount of time in seconds before the scanner can read another barcode.

You can type a desired Scan Delay value within the range in the text box provided.

Value

0

Trigger Scan Mode

This setting allows the user to set the trigger scan mode to allow continuous or normal scanning.

To adjust the Trigger Scan Mode on the device, select a desired option from the drop-down list box.

The setting has four options:

- **One shot**
- **Continuous**
- **Read on release**
- **Read on second trigger press**

Value

One Shot

Honeywell
855 S. Mint St.
Charlotte, NC 28202

automation.honeywell.com