

ControlBridge Wired Desktop Touch Panel

User Manual

Control and Manage Critical Systems using the ControlBridge Wired Desktop Touch Panel along with the ControlBridge Processor.



Regional Tech Support and Contact Information

Regional Tech Support and Contact Information

Visit blackbox.com/discover-bb/global-presence for regional technical support and contact information.



Federal Communications Commission and Industry Canada Radio Frequency Interference Statements

This equipment generates, uses, and can radiate radio-frequency energy, and if not installed and used properly, that is, in strict accordance with the manufacturer's instructions, may cause interference to radio communication. It has been tested and found to comply with the limits for a Class A computing device in accordance with the specifications in Subpart B of Part 15 of FCC rules, which are designed to provide reasonable protection against such interference when the equipment is operated in a commercial environment. Operation of this equipment in a residential area is likely to cause interference, in which case the user at his own expense will be required to take whatever measures may be necessary to correct the interference.

Changes or modifications not expressly approved by the party responsible for compliance could void the user's authority to operate the equipment.

This digital apparatus does not exceed the Class A limits for radio noise emission from digital apparatus set out in the Radio Interference Regulation of Industry Canada.

Le présent appareil numérique n'émet pas de bruits radioélectriques dépassant les limites applicables aux appareils numériques de la classe A prescrites dans le Règlement sur le brouillage radioélectrique publié par Industrie Canada.

Instrucciones de Seguridad (Normas Oficiales Mexicanas Electrical Safety Statement)

1. Todas las instrucciones de seguridad y operación deberán ser leídas antes de que el aparato eléctrico sea operado.
2. Las instrucciones de seguridad y operación deberán ser guardadas para referencia futura.
3. Todas las advertencias en el aparato eléctrico y en sus instrucciones de operación deben ser respetadas.
4. Todas las instrucciones de operación y uso deben ser seguidas.
5. El aparato eléctrico no deberá ser usado cerca del agua—por ejemplo, cerca de la tina de baño, lavabo, sótano mojado o cerca de una alberca, etc.
6. El aparato eléctrico debe ser usado únicamente con carritos o pedestales que sean recomendados por el fabricante.
7. El aparato eléctrico debe ser montado a la pared o al techo sólo como sea recomendado por el fabricante.
8. Servicio—El usuario no debe intentar dar servicio al equipo eléctrico más allá a lo descrito en las instrucciones de operación. Todo otro servicio deberá ser referido a personal de servicio calificado.
9. El aparato eléctrico debe ser situado de tal manera que su posición no interfiera su uso. La colocación del aparato eléctrico sobre una cama, sofá, alfombra o superficie similar puede bloquea la ventilación, no se debe colocar en libreros o gabinetes que impidan el flujo de aire por los orificios de ventilación.
10. El equipo eléctrico deber ser situado fuera del alcance de fuentes de calor como radiadores, registros de calor, estufas u otros aparatos (incluyendo amplificadores) que producen calor.
11. El aparato eléctrico deberá ser conectado a una fuente de poder sólo del tipo descrito en el instructivo de operación, o como se indique en el aparato.
12. Precaución debe ser tomada de tal manera que la tierra física y la polarización del equipo no sea eliminada.
13. Los cables de la fuente de poder deben ser guiados de tal manera que no sean pisados ni pellizcados por objetos colocados sobre o contra ellos, poniendo particular atención a los contactos y receptáculos donde salen del aparato.
14. El equipo eléctrico debe ser limpiado únicamente de acuerdo a las recomendaciones del fabricante.
15. En caso de existir, una antena externa deberá ser localizada lejos de las líneas de energía.
16. El cable de corriente deberá ser desconectado del cuando el equipo no sea usado por un largo periodo de tiempo.
17. Cuidado debe ser tomado de tal manera que objetos líquidos no sean derramados sobre la cubierta u orificios de ventilación.
18. Servicio por personal calificado deberá ser provisto cuando:
 - A: El cable de poder o el contacto ha sido dañado; u
 - B: Objetos han caído o líquido ha sido derramado dentro del aparato; o
 - C: El aparato ha sido expuesto a la lluvia; o
 - D: El aparato parece no operar normalmente o muestra un cambio en su desempeño; o
 - E: El aparato ha sido tirado o su cubierta ha sido dañada.

Table of Contents

- 1. Specifications 8
- 2. Overview 9
 - 2.1 Introduction..... 9
 - 2.2 Features 9
 - 2.3 What's Included 10
 - 2.4 Hardware Description 10
 - 2.4.1 ControlBridge 7" Wired Desktop Touch Panel (CB-TOUCH7-T) 10
 - 2.4.2 ControlBridge 10" Wired Desktop Touch Panel (CB-TOUCH10-T) 11
- 3. Installation 12
 - 3.1 Mounting 12
 - 3.2 Cleaning the Touch Panel 12
 - 3.3 Connection..... 13
 - 3.3.1 Ethernet 13
 - 3.3.2 Direct PC Connection 14
- 4. Windows Local Network Settings..... 15
- 5. Download User Application..... 17
 - 5.1 Overview 17
 - 5.2 Using ControlBridge Builder 17
 - 5.3 Using Admin Control Panel 18
- 6. Factory Default and System Default Settings..... 19
- 7. On Screen Display 20
 - 7.1 Access On Screen Display 20
 - 7.2 Startup Menu 20
 - 7.3 Settings..... 20
 - 7.4 Status 21
 - 7.5 IP Settings..... 21
 - 7.6 Date/Time 22
 - 7.7 Applications 22
 - 7.8 Exit 23
- 8. Admin Control Panel 24
 - 8.1 Login 24
 - 8.2 Configuration..... 24
 - 8.2.1 Identification..... 24
 - 8.2.2 Web 25
 - 8.3 IP Settings..... 26
 - 8.4 Network 27
 - 8.5 IPv4 27
 - 8.6 IPv6 28
 - 8.7 802.1X..... 28
 - 8.8 Proxy..... 29
 - 8.9 Current Date and Time 30
 - 8.10 Time Zone..... 30
 - 8.11 Internet Clock 31
 - 8.12 Applications 31
 - 8.13 Licenses..... 32
 - 8.14 File Storage..... 32
 - 8.15 SMTP..... 33
 - 8.16 Email Addresses 33

Table of Contents

8.17 FTP	34
8.18 Certificates	34
8.19 System Trusted CA.....	35
8.20 Users Trusted CA	35
8.21 Users.....	36
8.22 Settings.....	37
8.23 On Screen Display.....	37
8.24 Firmware.....	38
8.25 Information	39
8.26 Factory Default	39
8.27 Screenshot.....	40
8.28 Backup	40
8.29 Restore.....	41
8.30 Reset.....	42
8.31 License.....	42
8.32 Contact Support.....	43

Disclaimer:

Black Box Network Services shall not be liable for damages of any kind, including, but not limited to, punitive, consequential or cost of cover damages, resulting from any errors in the product information or specifications set forth in this document and Black Box Network Services may revise this document at any time without notice.

Chapter 1: Specifications

1. Specifications

Product code	CB-TOUCH7-T	CB-TOUCH10-T
Display size	7" (177.8 mm) diagonal	10.1" (256.5mm) diagonal
Display type	IPS transmissive color active matrix TFT LCD with LED backlight	
Resolution	1280 x 800 pixels	
Viewing angle	±80° horizontal, ±80° vertical	
Touch overlay	Projected capacitive, edge-to-edge glass	
Sensors	Light and proximity	
Audio	Microphone and speakers	
Memory	2 GB RAM, 16GB NAND Flash	
Network	Wired 10/100/1000BaseT Ethernet	
Power supply	PoE, IEEE 802.3af/Class 0	
Enclosure	Aluminium, glass Integrated tabletop stand	
Dimensions	4.5" x 7.8" x 3.8" (115 x 199 x 97 mm)	6.1" x 10.6" x 4.8" (155 x 268 x 121 mm)
Weight	1.8 lb. (0.8 kg)	2.9 lb. (1.31 kg)

2. Overview

2.1 Introduction

The ControlBridge® Wired Touch Panels models include 7" and 10" screen sizes. Both models provide multimedia integration, lighting automation, security monitoring, entertainment integration, and meeting and presentation control. The active matrix touch screen display supports 1280 x 800 pixels resolution for 7" and 10" screen sizes. Both models produce stunning, true-color images. A wired Ethernet connection provides easy network integration. The touch panels are equipped with Power over Ethernet (PoE)—technology enabling an Ethernet network cable to deliver both data and power. Fully compatible with ControlBridge controllers, these touch panels provide the ultimate one-touch solution for meeting rooms, conference rooms, boardrooms, and high-tech homes.

Table 2-1. Available models.

Product Code	Description
CB-TOUCH7-T	Wired tabletop touch panel 7"
CB-TOUCH10-T	Wired tabletop touch panel 10"

2.2 Features

- Wired tabletop and built-in touch panels
- 7" and 10" active matrix touch screen displays
- Resolution: 1280 x 800 pixels for 7" and 10"
- Colors: 32-bit (True-Color), transparency 8-bit Alpha blending
- Wired Ethernet communication
- Power over Ethernet power supply
- Built-in microphone and speakers
- Built-in light and proximity sensors
- Real time clock (RTC) for scheduling applications
- Aluminium enclosure and aluminium front panel for built-in models
- Bi-directional control of any IP enabled products through Ethernet port
- Web server and Admin Control Panel for setup through a standard web browser
- Programmable

NOTE: CB-TOUCH-T panels must be programmed using the ControlBridge Builder software.

2.3 What's Included

Table 2-2. Package contents.

	CB-TOUCH7-T	CB-TOUCH10-T
PoE Adapter	1	1
Ethernet cable	1	1
Power cable	1	1
Cleaning tissue	1	1
Declaration of Conformity	1	1
ControlBridge® System Connector Wiring	1	1

2.4 Hardware Description

2.4.1 ControlBridge 7" Wired Desktop Touch Panel (CB-TOUCH7-T)

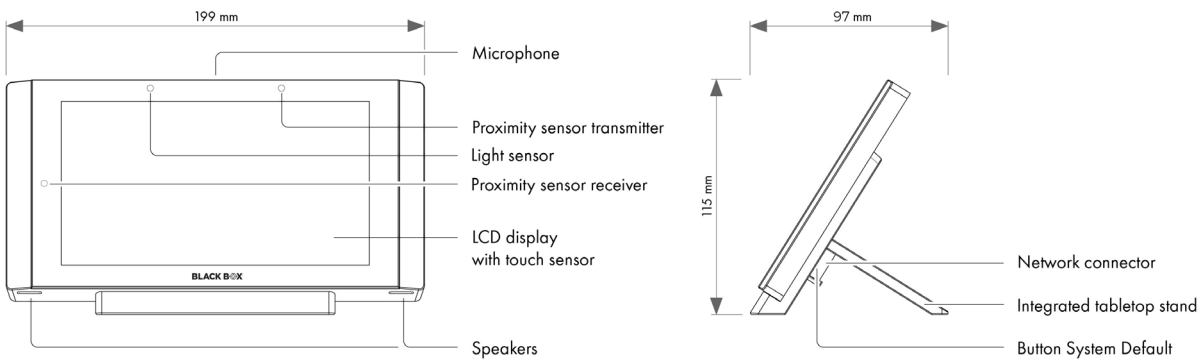


Figure 2-1. CB-TOUCH7-T.

2.4.2 ControlBridge 10" Wired Desktop Touch Panel (CB-TOUCH10-T)

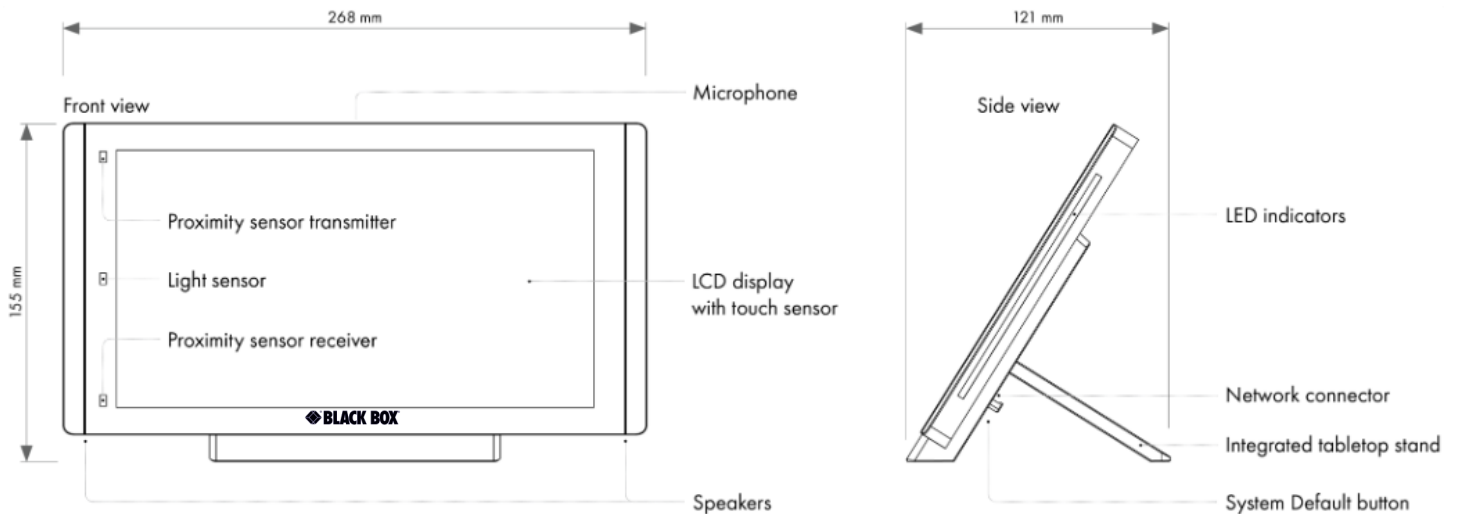


Figure 2-2.CB-TOUCH10-T.

Table 2-3. CB-TOUCH7-T and CB-TOUCH10-T components.

Component	Description
Microphone	The microphone is for future use. The functionality depends upon a firmware revision.
Proximity sensor	The motion sensor resumes the touch panel from Backlight Saver mode. Enable or disable this function using the On-Screen Display or the Admin Control Panel.
Light Sensor	The light sensor automatically adjusts the display backlight according to the ambient light level. This function must be enabled using the On-Screen Display or the Admin Control Panel.
Touch-screen display	The touch-screen display includes an active matrix color LCD and a resistive touch membrane overlay.
Speakers	Use the built-in stereo speakers to play sounds stored in the touch panels.
System Default Button	When you press this button, the system resets to factory default settings. For details, see the Factory Default and System Default chapter. You will need to use a thin screwdriver to press this button.
Network Connector	The 10/100/1000BASE-T LAN is a standard network connection equipped with Power over Ethernet (PoE) using a RJ-45 connector. For more details, see the Connection chapter.

Chapter 3: Installation

3. Installation

3.1 Mounting

Desktop models can be placed on any flat surface.

To install:

1. Prepare the proper bushing for the cable including a standard connector. The bushing should have a minimum diameter of approximately 20 mm for the Ethernet connector.
2. Install the network cable as shown in Figure 3-1, and connect the network connector.

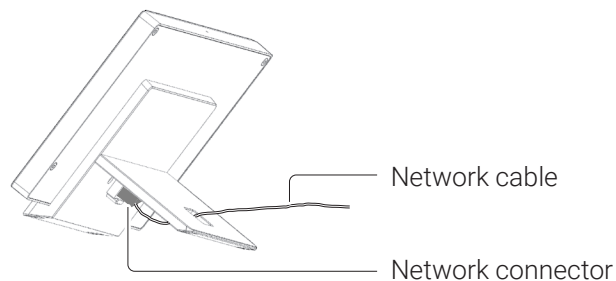


Figure 3-1. Connecting the ControlBridge® WIred Touch Panel to the network.

3. Place the touch panel on a table.

3.2 Cleaning the Touch Panel

Clean the touch panel screen overlay after each day's use.

Items required for cleaning:

- Two clean, soft texture cloths (cotton).
- Spray bottle of cleaning solution without alcohol (window cleaner).
- Special cleaning solution for aluminum parts.

To clean the touch panel:

1. Turn the touch panel off.
2. Spray a small amount of the cleaning solution onto one of the cloths.
3. Clean the touch panel overlay with the damp cloth.
4. Wipe the touch panel overlay with the dry cloth.

3.3 Connection

3.3.1 Ethernet

The standard 10/100/1000BASE-T LAN uses an RJ-45 connector. It does not autosense polarity, which means it does not recognize straight-through cable or cross-over cable. To connect directly to the PC, you must use cross-over cable; to connect directly to an Ethernet switch, use straight-through cable. The length of the Ethernet cable that connects the touch panel to the network must not exceed 328 feet (100 meters).

Power over Ethernet (PoE) integrates data and power on the same wires. It keeps the structured cabling safe, and it does not interfere with concurrent network operation.

Power over Ethernet needs compatible Ethernet switches or injectors. You can order these from Black Box or another equipment manufacturer.

Power over Ethernet is fully compatible with:

- IEEE 802.3af (PoE) standard for 7" and 10" models

Ethernet without PoE Infrastructure

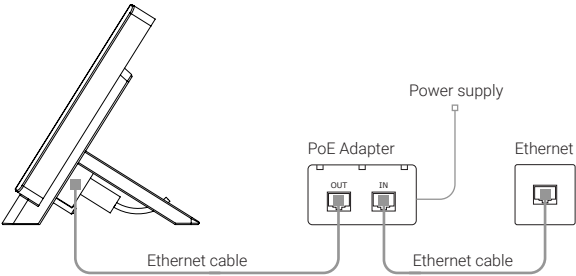


Figure 3-2. Installing the ControlBridge® Touch Panel in an environment without PoE infrastructure.

Ethernet with PoE Infrastructure

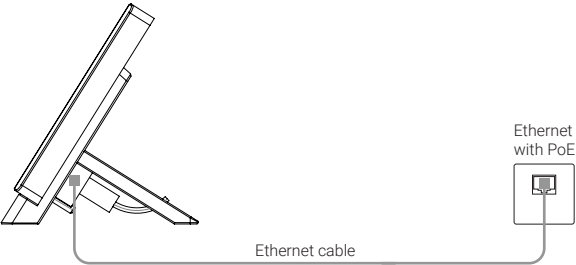
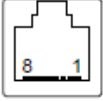


Figure 3-3. Installing the ControlBridge Touch Panel in an environment with PoE infrastructure.

Table 3-1. PoE/PoE+ connector pinout.

RJ-45	Pin	Signal	CAT5 Cable Color
	1	TX_D1+ and PoE	White / Orange
	2	TX_D1- and PoE	Orange
	3	RX_D2+ and PoE	White / Green
	4	PoE +/- 48 V	Blue
	5		White / Blue
	6	RX-D2- and PoE	Green
	7	PoE Common	White / Brown
	8		Brown

3.3.2 Direct PC Connection

The touch panel models are equipped with a PoE power supply. That means one CATx cable is used for both power supply and for data.

Use:

- PoE Adapter

To establish a connection:

1. Attach one end of an RJ-45 Ethernet straight-through cable to the LAN port on the ControlBridge® touch panel, and attach the other end of this cable to the OUT port of a PoE Adapter.
2. Attach one end of an RJ-45 Ethernet straight-through cable to the IN port of the PoE Adapter, and attach the other end of this cable to the LAN port of your computer.
3. Attach the power supply to the PoE adapter.

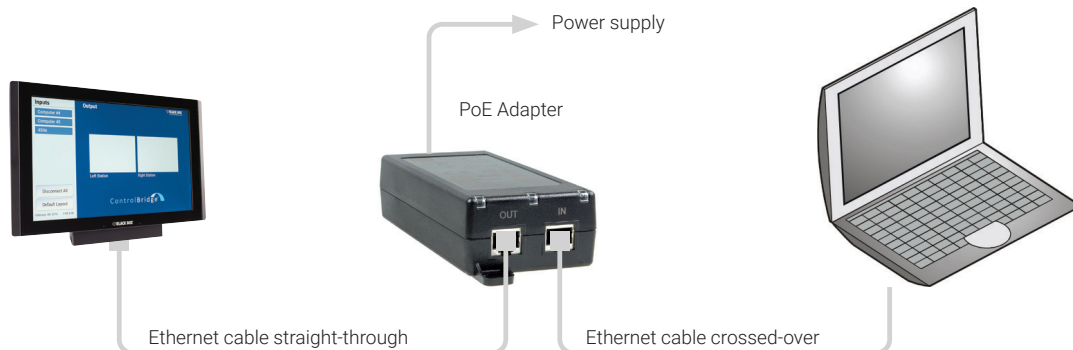


Figure 3-4. Direction PC connection.

4. Windows Local Network Settings

For Windows®:

1. Start Windows 10 or 11.
2. Enter **Network Connections** in the search bar.
3. Right-click on the network adapter used to connect to the touch panel.

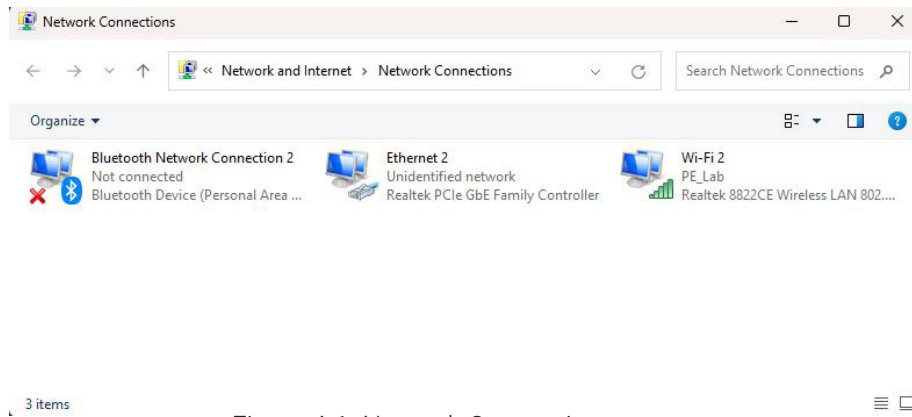


Figure 4-1. Network Connections screen

4. Select **Properties**.
5. Select Internet Protocol (**TCP/IP**). Then click on the **Properties** button.
6. Select the **Use the following IP address** option. Set the IP address to 192.168.1.1 (or another address different from 192.168.1.127 and from 192.168.1.128) and the Subnet mask to 255.255.255.0. Leave other options unchanged. Then click on the **OK** button.

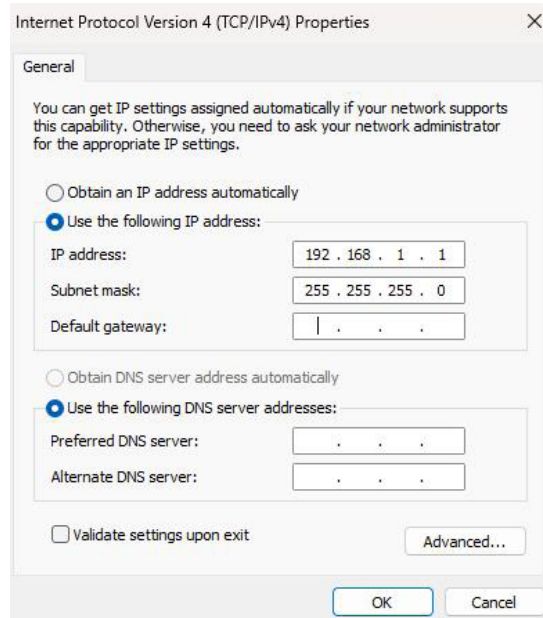


Figure 4-2. IPv4 Properties screen.

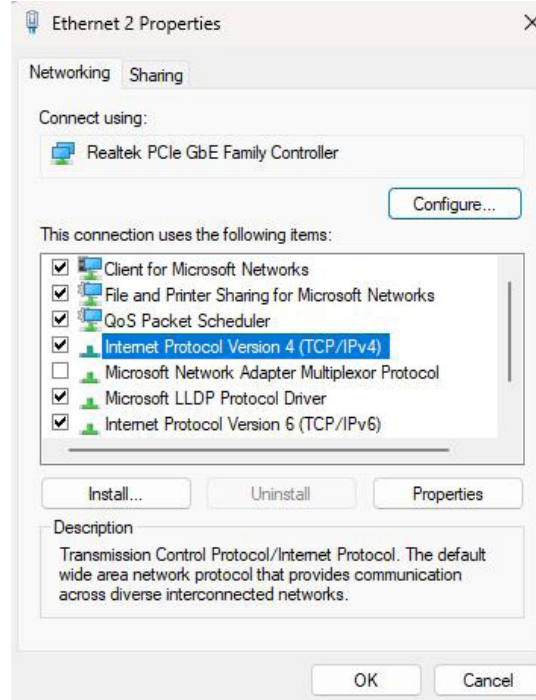


Figure 4-3. Properties screen.

5. Download the User Application

5.1 Overview

A user control application is dedicated to control, and it is programmed by ControlBridge® Builder programming tools.

5.2 Using ControlBridge Builder

To use the ControlBridge Builder:

1. Connect the touch panel to your computer as described in the PC Connection chapter.
2. Run ControlBridge Builder on your PC.
3. Open the appropriate project in ControlBridge Builder. Confirm that the touch panel is properly connected and configured.
4. Use the **Final** button on the tool bar to open the **Upload and Export Application** dialog box.

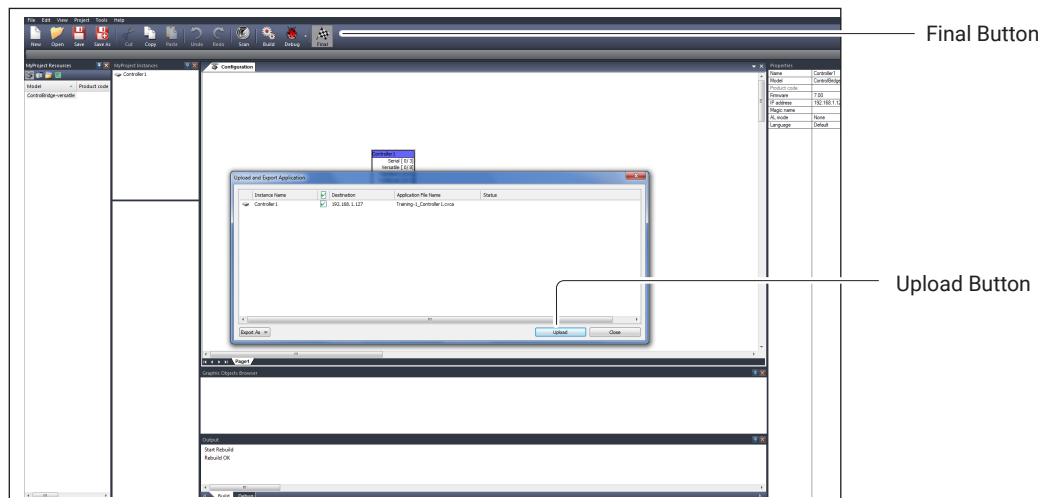


Figure 5-1. Upload and Export Application dialog box.

5. Verify that your touch panel is checked.
6. Use the **Upload** button to start the application upload.
7. If touch panel firmware isn't installed, it will be uploaded automatically. Then the application upload will finish.

Chapter 5: Download the User Application

5.3 Using Admin Control Panel

To use the Admin Control Panel:

1. Connect the touch panel to your computer as described in the PC Connection chapter.
2. Run ControlBridge® Builder on your PC.
3. Open the appropriate project in ControlBridge Builder. Confirm that the touch panel is properly connected and configured.
4. Use the **Final** tool bar button to open the **Upload and Export Application** dialog box.

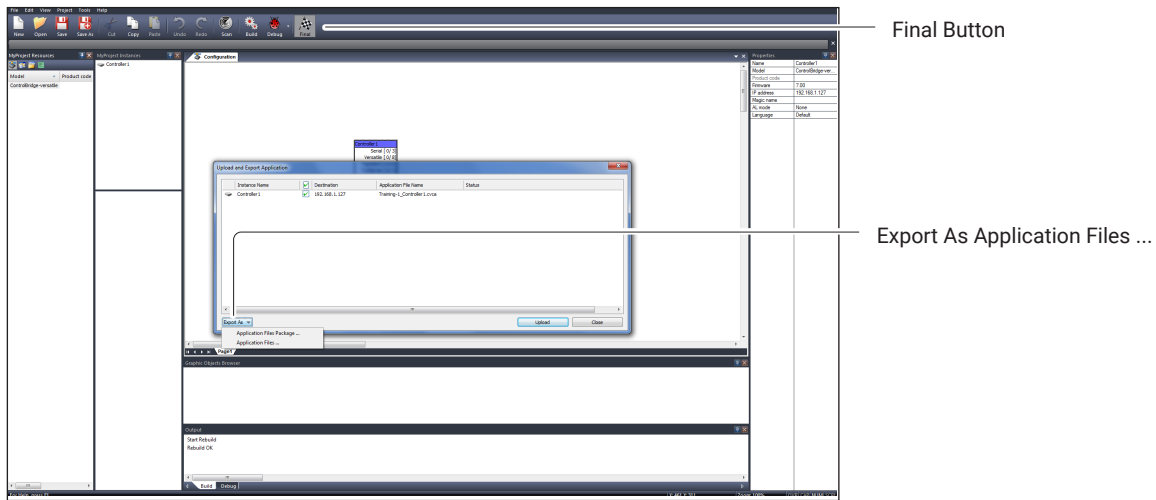


Figure 5-2. Admin Control Panel screen.

5. Verify that your touch panel is checked.
6. Use the **Export All...** button to export the application and store it in the file *.cvca.
7. Open an Internet browser on your PC. Then type in the same touch panel IP address that you see in the ControlBridge Builder project, window Properties/IP address.
8. Go to the **System** page and check the current firmware version. If there is no actual firmware version in touch panel, upload the firmware version that corresponds to the firmware version in the ControlBridge Builder project.
9. Go to the **Applications** page and upload the application file *.cvca.
10. To start the uploaded application, press the **Start** button.

6. Factory Default and System Default Settings

Every device shipped from the factory is set according to Factory Default column in Table 6-1.

When you press the **System Default** button, the system default function is performed according to the System Default column in Table 6-1. This enables you to regain connection to the touch panel in case you lose the password or do not know the IP settings.

Table 6-1. Factory default and system default settings.

			Factory Default	System Default
Configuration	Identification	Name	Empty	Not changed
		IP settings	Host name	Empty
	IP address		192.168.1.128	192.168.1.128
	Subnet mask		255.255.255.0	255.255.255.0
	Default gateway		192.168.1.1	192.168.1.1
	DNS	Primary DNS server	Empty	Not changed
		Secondary DNS server	Empty	Not changed
Date and time	Date and Time	Day, month, year	Real	Not changed
		Hour, minute, second	Real	Not changed
		Time zone	(GMT+1:00 CET/CEST Belgrade, ..., Prague)	Not changed
	Internet clock	Use Internet clock	Not	Not changed
		Primary NTP server	Empty	Not changed
		Secondary NTP server	Empty	Not changed
Applications			Empty	Not changed
File storage			Empty	Not changed
System	Firmware		Current version	Not changed
Password			Empty	Empty

7. On-Screen Display

7.1 Access On Screen Display

The multifunctional button located on front panel shows the On-Screen Display. The startup menu is displayed automatically if no application is running.

7.2 Startup Menu

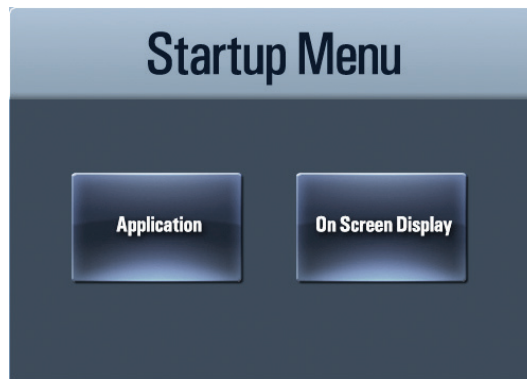


Figure 7-1. Startup Menu.

Press the **Application** button to download the application.

Press the **On Screen Display** button to launch the Settings menu described in Section 7.3 below:

7.3 Settings

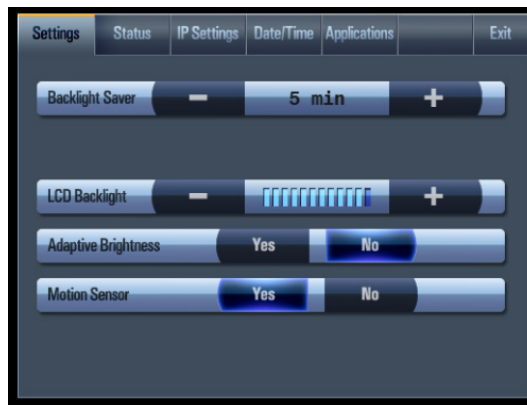


Figure 7-2. Settings menu.

The **Backlight Saver** automatically switches off the display backlight. Set the time in minutes, using the - and + buttons. Time set to 0 indicates that Backlight Saver is disabled.

LCD Backlight sets the display's backlight level.

If **Adaptive Brightness** is set to **Yes**, the light sensor automatically adjusts the display backlight according to the ambient light level.

If **Motion Sensor** is set to **Yes**, the motion sensor automatically resumes touch panel operation from Backlight Saver mode.

7.4 Status

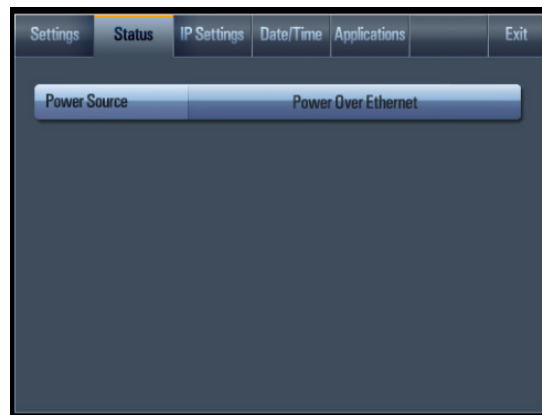


Figure 7-3. Status screen.

This page shows the touch panel's current status.

7.5 IP Settings



Figure 7-4. IP settings screen.

Use this page to set the touch panel's communication parameters. The touch panel uses standard internet protocol (IP) communication parameters, and you can reset certain parameters.

On start up, this page will display the current IP address. Record this address information (and any changes you elect to make to the IP address, subnet mask, or default gateway). Enter this information into the ControlBridge® Builder program written for your specific application. For control systems with more than one unit, a unique IP address must be given to each ControlBridge unit.

Select the appropriate field using the **Edit** button. Then use the numeric keypad.

Press the **Apply** button to confirm and apply the changes.

7.6 Date/Time

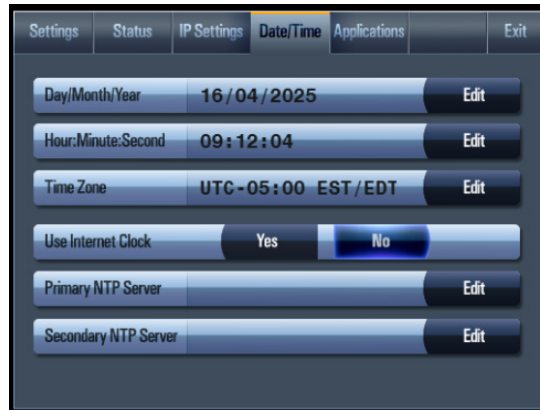


Figure 7-5. Date/Time screen.

Use this page to set the Date/Time parameters.

You can set the current date and time. Select appropriate field using the **Edit** button. Then use the numeric keypad.

Select the time zone from the drop-down box.

The rest of the page is used for to synchronize the ControlBridge® Unit's date and time with an internet clock. Select **Yes** to Use Internet clock. Next, enter the IP addresses (or complete address name) of the primary and secondary NTP servers.

7.7 Applications

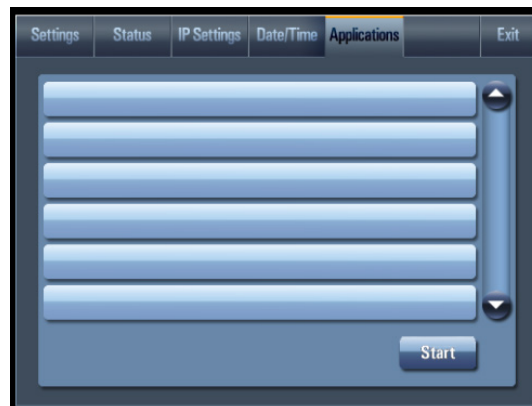


Figure 7-6. Applications screen.

Use this screen to select, start, and stop uploaded applications. All uploaded applications are listed on this page.

Select the application and press the **Start** button. A “running flag” denotes the active application. The active application starts automatically after you switch on the unit. You can stop the running application by pressing the **Stop** button.

Files are uploaded from a personal computer to the touch panel using ControlBridge Builder software or using the Admin Control Panel.

7.8 Exit



Figure 7-7. Exit screen.

8. Admin Control Panel

8.1 Login

Open an Internet browser on your PC and type in the touch panel's IP address. (The factory default IP address is 192.168.1.128.)

The default password is empty.



Figure 8-1. Login screen.

NOTE: This screen isn't displayed if the password is empty (factory default status).

If the password isn't empty, you have to log in first to use these web pages with your ControlBridge® Unit.

Enter your password into the **Password** box. Then press the **Login** button to enter the ControlBridge Unit's web pages.

NOTE: The password is case-sensitive. To change the password, use the **Password** menu after you are logged in.

8.2 Configuration

8.2.1 Identification

Every unit can be identified by a unique Magic name. Magic names are most useful in applications requiring more than one unit or when a unit obtains an IP address from a DHCP server. This enables programmers and installers to reference units with logical, user-friendly names, such as “boardroom” or “lobby.”

Steps:

- Select **Configuration** from the menu on the left side of the screen.
- The Configuration menu opens with the **Identification** tab selected and the following screen displayed:

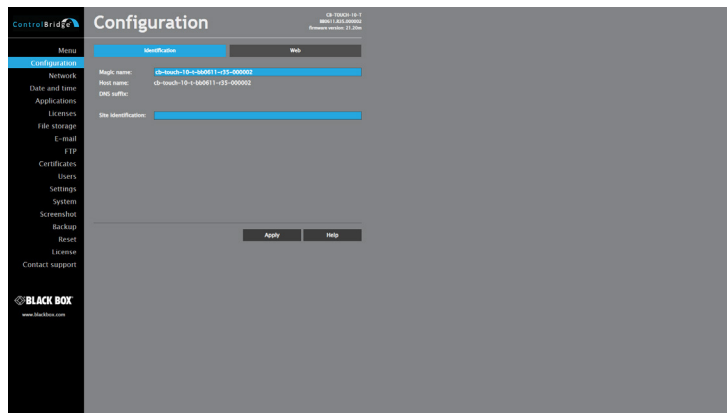


Figure 8-2. Configuration Identification.

- You can change the "Magic name." "Magic name" is a unique name of a unit used in communication between reservation suite units. There is usually no need to change the factory-set name. If you need to change it, however, you must ensure that the new name is unique in the specific local network.
- The Host name is also automatically derived from the magic name to match the syntax rules for the host name and DNS.
- The host name and DNS suffix are displayed under the magic name.
- Entering site identification is optional. It can be used to provide more information about where the unit is installed.
- Press the **Apply** button to confirm and apply the changes.

8.2.2 Web

Select the **Web** tab at the top of the screen. This allows you to choose the level of security for the admin Web page.

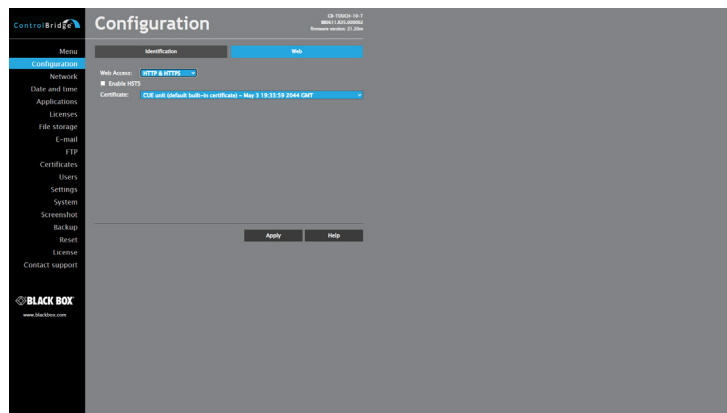


Figure 8-3. Web configuration.

Chapter 8: Admin Control Panel

In the **Web Access** field you can enable the following options:

- Unsecured HTTP access (port 80)
- Secure HTTPS access (port 443) using the "HTTP & HTTPS".
- If you choose **HTTPS only**, websites will only be accessible through secure HTTPS.

For HTTPS access, a self-signed certificate named "CUE unit (default built-in certificate)" is installed by default.

At present, self-signed certificates are not considered secure. Therefore, you can use your own certificates for the HTTPS admin web server in this unit. Certificate, private key, and intermediate certificate in PEM format are supported. You can upload certificates on the page **Certificates**.

Then, in the field **Certificate**, select the certificate used for HTTPS access to the Admin Web pages.

In the checkbox **Enable HSTS** you can enable HTTP Strict Transport Security (HSTS) web security policy mechanism. HSTS is disabled by default. Web access must be set to HTTPS only for the functioning of the mechanism.

Press the **Apply** button to confirm and apply the changes.

8.3 IP Settings

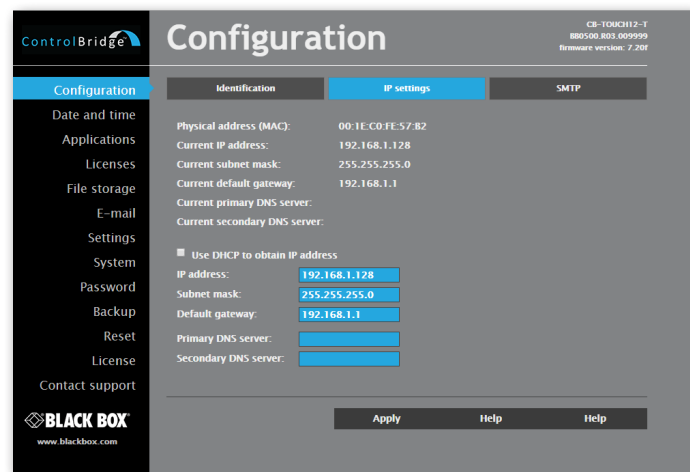


Figure 8-3. Configuration screen.

This page is used for establishing the communication parameters for your ControlBridge® Unit.

The ControlBridge Unit uses standard internet protocol (IP) communication parameters. Certain parameters can be reset by the user. On start up, this page will display the ControlBridge Unit's given Physical address (MAC) and Current IP address. Record this addressing information (and any changes you elect to make to the IP address, subnet mask, or default gateway). This information must be entered into the ControlBridge Builder program written for your specific application. For control systems with more than one ControlBridge Units, a unique IP address must be given to each ControlBridge Unit.

Some control systems are "standalone" and not part of a larger network. For such "stand alone" systems, the Host name is optional. For control systems that are connected to a larger network, however, obtain the Host name from the network administrator, and enter it into the corresponding box. DHCP is not supported in this release.

Press the **Apply** button to confirm and apply the changes.

8.4 Network

Select **Network** from the menu on the left side of the screen.

The Network menu opens to the **Network** tab and displays the “Connected via ethernet” status message.

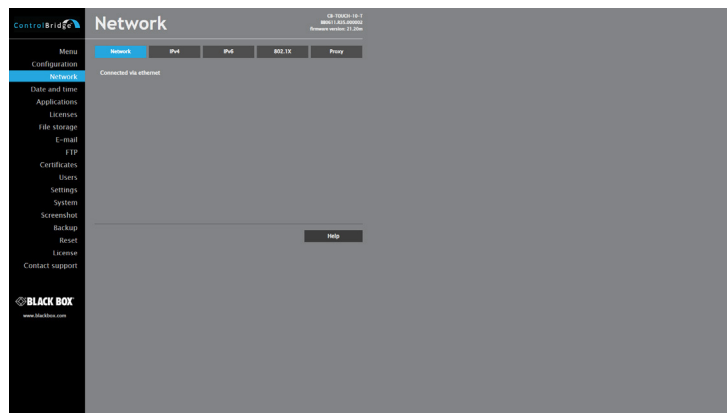


Figure 8-4. Network screen.

8.5 IPv4

The IPv4 menu page is used for establishing the unit's communication parameters. The unit uses standard internet protocol (IP) communication parameters. Certain parameters can be reset by the user.

On start-up, this page will display the unit's:

- Physical address (MAC)
- Current IP address
- Current subnet Mask
- Current default gateway
- Current DNS server
- Current secondary DNS Server.

Record this address information (and any changes you make to the IP address, subnet mask, default gateway, or primary and secondary DNS server).

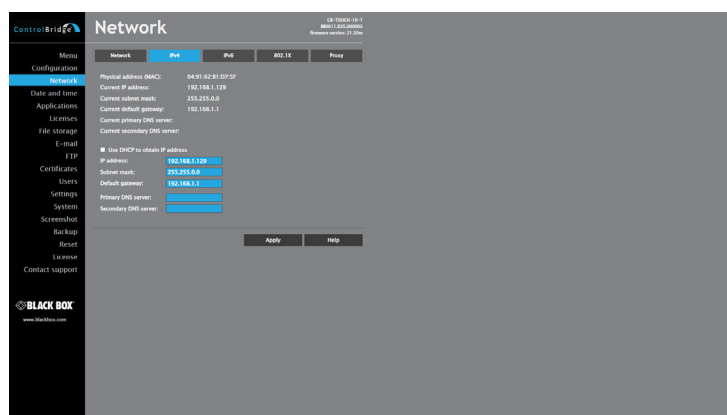


Figure 8-5. IPv4 screen.

Chapter 8: Admin Control Panel

- The current settings are displayed in the upper part of the page.
- By selecting the checkbox **Use DHCP to obtain IP address**, you enable automatic assignment of an IP address and DNS server through the DHCP server.
- If you do not enable the automatic assignment of DNS server addresses, you need to set them in the fields: **Primary DNS server** or **Secondary DNS server**.
- You can also enter the IP address, the subnet mask, and the default gateway, as well as the primary and secondary server DNS of your network.

If the assignment of IP address through DHCP is enabled, the entered setting of the IP address, mask, etc. is taken as alternate configuration, for example, the configuration used in case the DHCP server is not available. If you are not using DHCP to assign the IP address, all items (IP address, subnet mask, default gateway, and the primary and secondary DNS servers) have to be set for your network.

- Press the **Apply** button to confirm and apply the changes.
- In changing the IP settings, you need to reset the CB-TOUCH unit. Confirm the changes in the setup by pressing the **Yes** button on the next page. This will also initiate the reset.

8.6 IPv6

- The IPv6 options are **OFF** and **AUTO**.
- The physical address (MAC) of the unit is also shown.

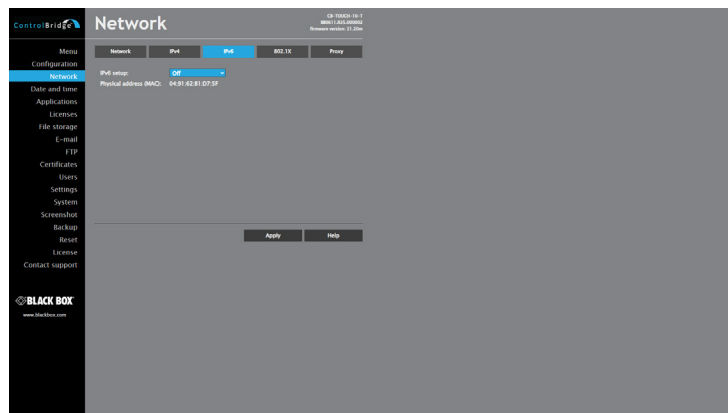


Figure 8-6. IPv6 screen.

8.7 802.1X

In the **Authentication type** field select the required authentication method or **Disabled** if 802.1X is not used. This setting must be made for all units in the system.

The Authentication Type options are:

- Disabled
- MD5
- EAP-TLS.

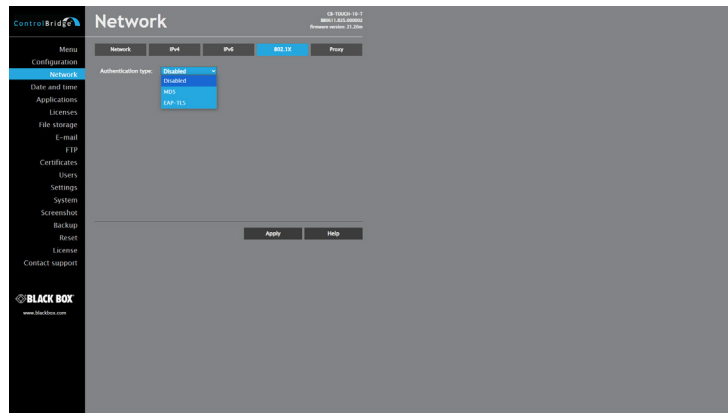


Figure 8-7. Network screen.

If you are using MD5 authentication, enter:

- "Device identity"
- Password for MD5 authentication.

If you are using EAP-TLS authentication using a certificate, enter:

- "Device identity".
- Select the certificate used for authentication. The certificate can be uploaded on the **Certificates** page. The following certificate types are supported: PKCS #12 and x509 (PEM, DER).

Press the **Apply** button to confirm and apply the changes.

8.8 Proxy

If the proxy server is mandatory to access HTTPS servers on your network, select the **Proxy** tab via the horizontal menu.

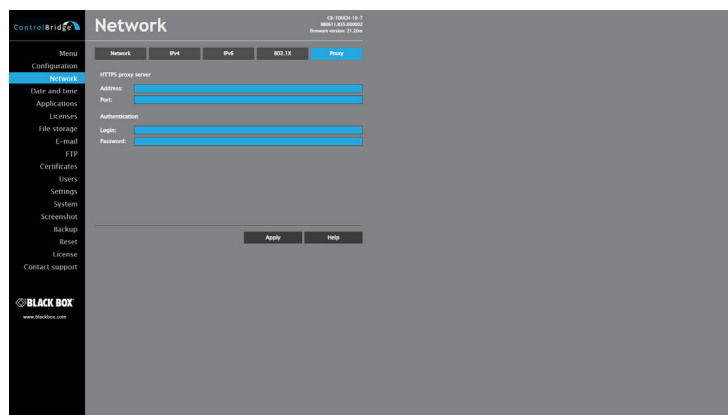


Figure 8-8. Network proxy screen.

- Enter the proxy server's **Address** and **Port**.
- If the proxy server requires authentication, enter the proxy server's **Login** and **Password** credentials.

Chapter 8: Admin Control Panel

- Press the **Apply** button to confirm and apply the changes. This setting must be made for all units of the reservation system.

If your proxy server first decrypts secure communication with remote servers and re-encrypts it with its certificate after checking, you must upload the root certificate of the trusted CA that signed the proxy server certificate to the User's trusted CA list on the **Certificates** page.

8.9 Current Date and Time

Select **Date and time** from the menu on the left side of the screen.

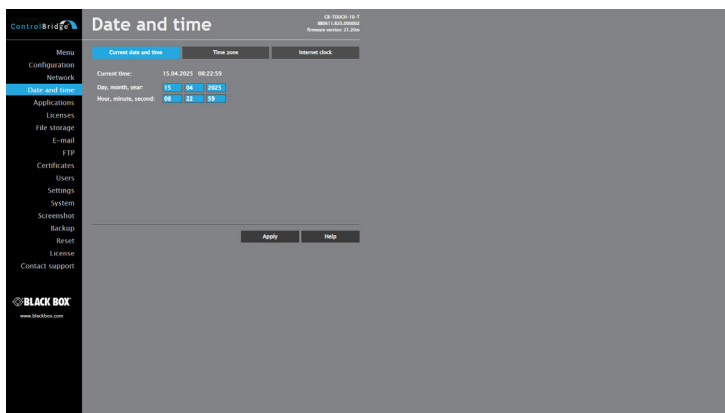


Figure 8-9. Date and time screen.

The menu opens with the **Current date and time** tab selected.

You can update the date and time using the available fields:

- Day/month/year
- Hour minute second.

Press the **Apply** button to confirm and apply the changes.

8.10 Time Zone

To set the time zone, select the **Time zone** tab.

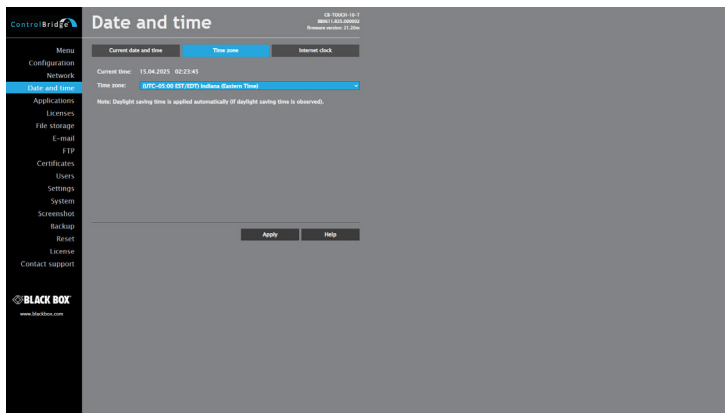


Figure 8-10. Time zone screen.

- The Time zone box can be selected to enter changes to the time zone.
- Press the **Apply** button to confirm and apply the changes.

8.11 Internet Clock

To use Internet Time Servers, select the **Internet Clock** tab.

This page is used for the synchronization of the unit date and time with an internet clock. Begin by selecting the check box for **Use Internet clock**. Next, enter the IP addresses (or complete address names) of the primary and secondary NTP servers. Use the Primary NTP server and Secondary NTP server boxes for this purpose.

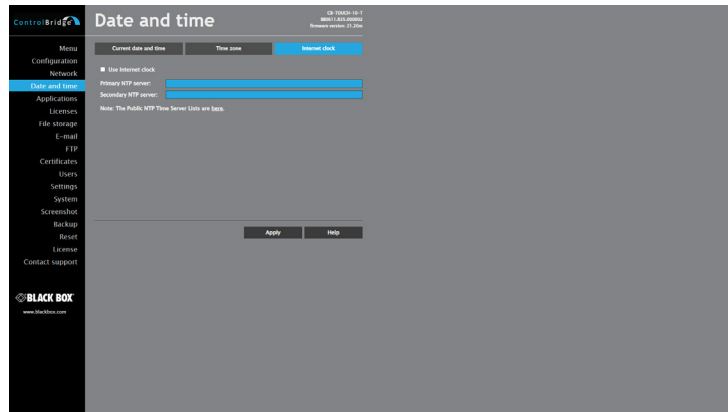


Figure 8-11. Internet clock screen.

- Here you can change the **names** or **IP addresses** of the primary NTP server and the secondary NTP server. The default setting of the servers is "time.nist.gov" and "tak.cesnet.cz".
- Press the **Apply** button to confirm and apply the changes.

The reservation unit requires automatic synchronization of its clock with the internet time (NTP) servers.

8.12 Applications

This page is used for uploading compiled ControlBridge® Builder programs to your CB-TOUCH unit.

Select **Applications** from the menu on the left side of the screen.

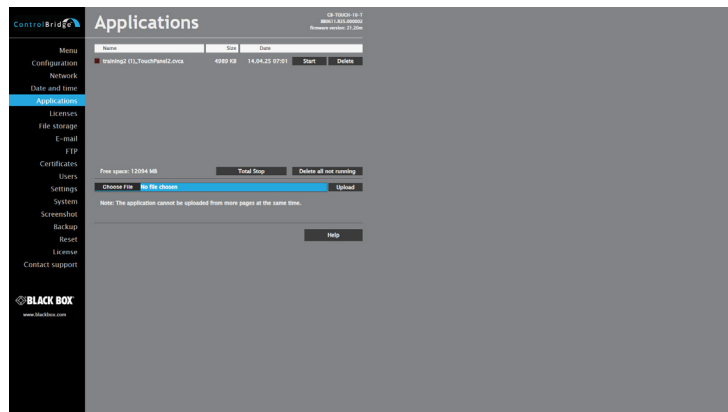


Figure 8-12. Applications screen.

Chapter 8: Admin Control Panel

All uploaded applications are listed on this page, along with their file properties: file name/file size/date.

The CB-TOUCH unit's unused free space is shown at the bottom of this page. CB-TOUCH also permits other service functions, such as deleting files, downloading programs back to a personal computer, and starting/stopping specific applications.

A "running flag" denotes the active application. The running application can be stopped via the **Start/Stop** button.

Likewise, a stopped application can be restarted with the **Start/Stop** button.

Files are uploaded from a personal computer to the CB-TOUCH unit by selecting the desired application program and then pressing the **Upload** button. Files are downloaded from the CB-TOUCH unit to a personal computer by clicking on the File name. Files are easily deleted with the **Delete** button. The **Total stop** button stops a running application. The application will not be automatically started after reset.

8.13 Licenses

Select **Licenses** from the menu on the left side of the screen.

License keys to enable additional CB-TOUCH functions can be entered here.

Currently enabled Licenses will be shown.

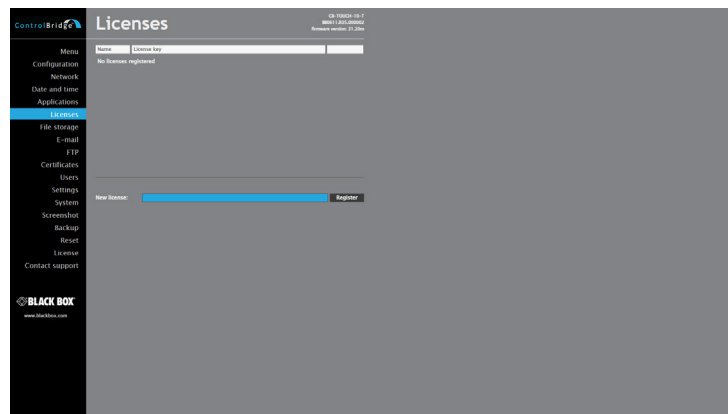


Figure 8-13. Licenses screen.

8.14 File Storage

The CB-TOUCH unit's memory can be used for auxiliary file storage. This allows you to store presets, archive electronic manuals, pdf files, and other support documentation.

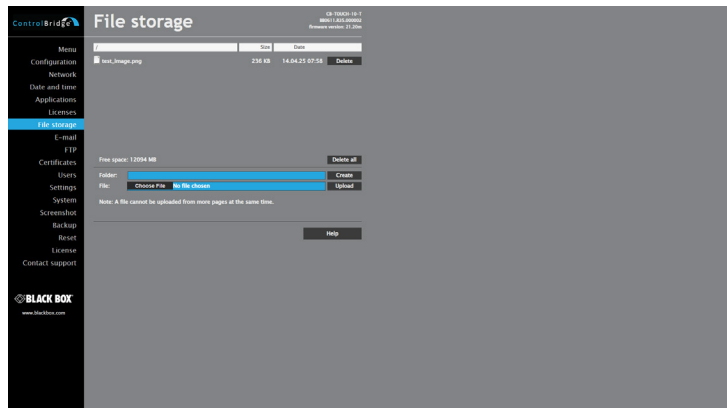


Figure 8-14. File storage screen.

A list of existing files, folders, and their properties is shown. To delete a file or a folder, press the **Delete** button on the corresponding line. To delete all files and folders from the current folder, press the **Delete All** button.

To create a new folder, enter a name for the new folder, and press the **Create** button. To upload a file, select the desired file, and then press the **Upload** button.

Note: Files are automatically compressed for the CB-TOUCH unit's internal file system. Accordingly, the size of your uncompressed file before restoring may not match the decrease of free space shown on the CB-TOUCH unit.

8.15 SMTP

Select **E-mail** from the menu on the left side of the screen.

The E-mail menu opens to the SMTP tab. This page is used for setting the parameters of the SMTP server. Set a name or an address and the port of your SMTP server.



Figure 8-15. E-mail SMTP screen.

8.16 Email Addresses

Select the **E-mail addresses** tab.

This page is used for setting parameters of e-mail parameters and recipients' addresses.

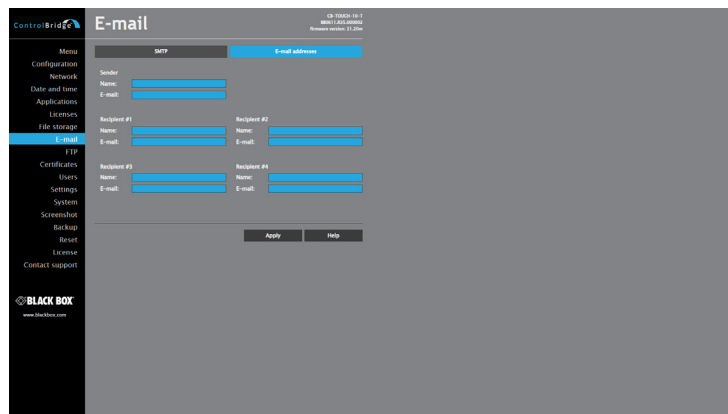


Figure 8-16. Email Addresses screen.

8.17 FTP

Select **FTP** from the menu on the left side of the screen.

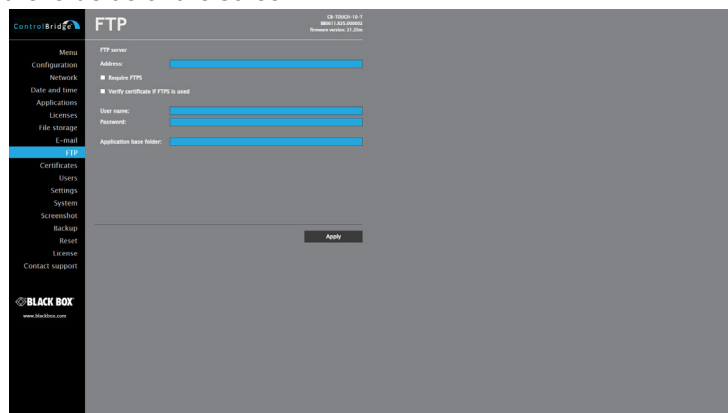


Figure 8-17. FTP screen.

8.18 Certificates

Select **Certificates** from the menu on the left side of the screen.

The **Certificates** menu opens to the **Certifications** tab.

Here you can manage certificates for secure unit communication.

You can use the certificates inserted in this way for the secure connection using 802.1X protocol and as the SSL certificate for the Web Admin pages. Certificate settings for this purpose are performed on the "Configuration/802.1X" and "Configuration/Web" pages.

On this page, you can manage the certificates required for the secure operation of the reservation system. This setting must be made for all units in the system.



Figure 8-18. Certificates screen.

8.19 System Trusted CA

Select the **System Trusted CA** tab.

On this tab, you can view a list of trusted public root certificate authorities that are built into the firmware.

This list is read-only, and it is regularly updated in newer firmware versions.

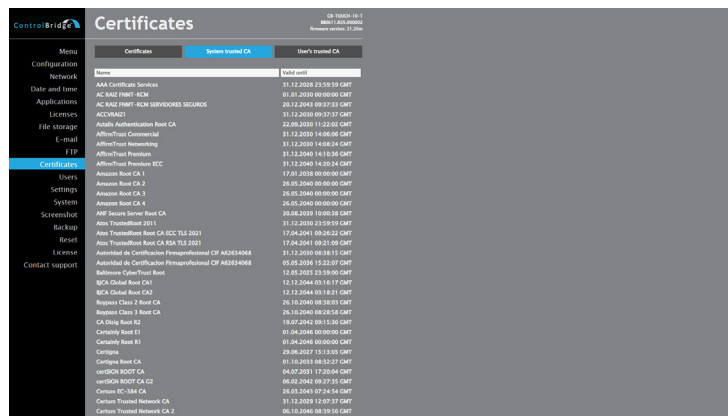


Figure 8-19. Systems Trusted CA screen.

8.20 Users Trusted CA

Select the **Users Trusted CA** tab.

On the **User's trusted CA** tab, you can upload the certificate of your own trusted certification authority to the unit. If you need to access HTTPS services from servers that do not have a certificate signed by the authorities embedded into the firmware and you need to verify these servers' certificates, you can use this page to upload the certificates of your own trusted root certification authorities.

This can be useful, for example, if you use a proxy server that re-encrypts the data using a custom certificate that is signed by your own certification authority. Further details are described in Section 8.8: Proxy.

The trusted root CA certificate must be in PEM format.

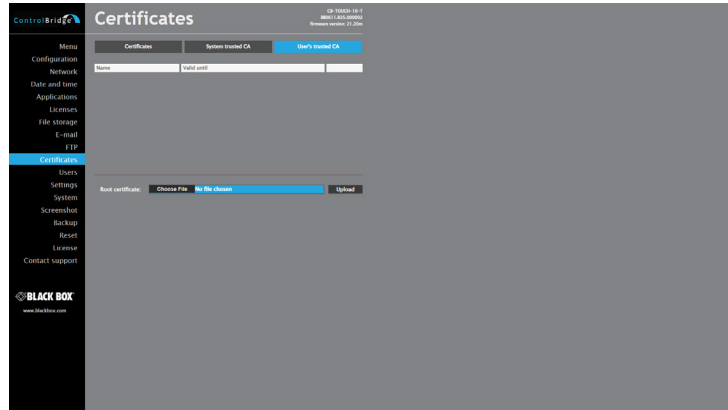


Figure 8-20. Users Trusted CA screen.

8.21 Users

Select **Users** from the menu on the left side of the screen.

The page lists all existing users in the unit, and it allows you to add and remove users. There are two types of users: **admin** and **user**.

The **admin** user has full access to all of the unit's websites.

A **user** type user only has access to the websites that are part of the ControlBridge® application.

The admin user type exists in the unit automatically, and it has a fixed name: **administrator**. Users of type admin cannot be added or deleted. A password can be set for the admin user.

A maximum of 10 users can exist on the unit. This includes the Admin accounts. A user can be created using the **New user form** and pressing **Create**. To delete a user, use the **Delete** button. To change a user's password, use the **Edit** button.

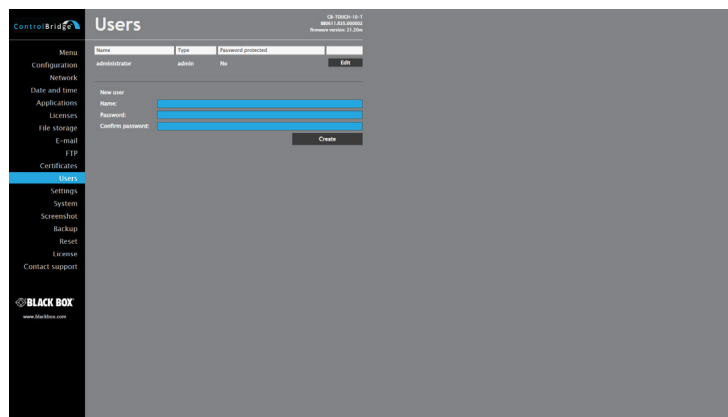


Figure 8-21. Users screen.

8.22 Settings

Select **Settings** from the menu on the left side of the screen.

The Settings menu opens to the **Settings** tab. This tab allows you to change the display settings listed below:

- Backlight saver (in minutes)
- LCD Backlight intensity (0-100)
- Adaptive brightness (On/Off)
- Motion sensor (Yes/No)

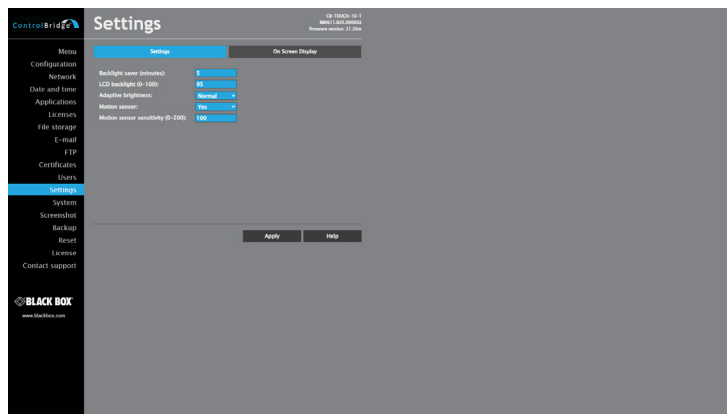


Figure 8-22. Settings screen.

The **Backlight Saver** will switch off automatically and display the backlight. Time can be set in minutes. Time set to 0 means that Backlight Saver is disabled.

LCD Backlight sets the display's backlight level.

If **Adaptive Brightness** is set to **Yes**, the light sensor automatically adjusts the display backlight according to the ambient light level.

If **Motion Sensor** is set to **Yes**, the Motion Sensor resumes the touch panel from Backlight Saver mode automatically.

8.23 On Screen Display

Select the **On Screen Display** tab.

There are two On Screen display Mode options: **Basic** and **Advanced**.

If basic mode is selected, each option below is individually set. In Advanced mode, all options are enabled.

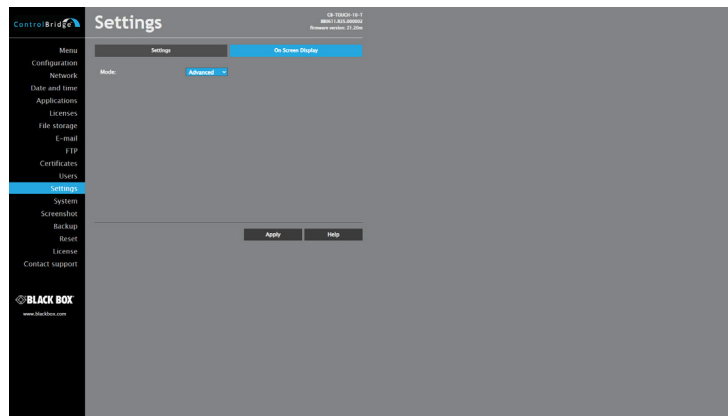


Figure 8-23. On Screen Display screen.

8.24 Firmware

Select **System** from the menu on the left side of the screen. The System menu opens to the **Firmware** tab.

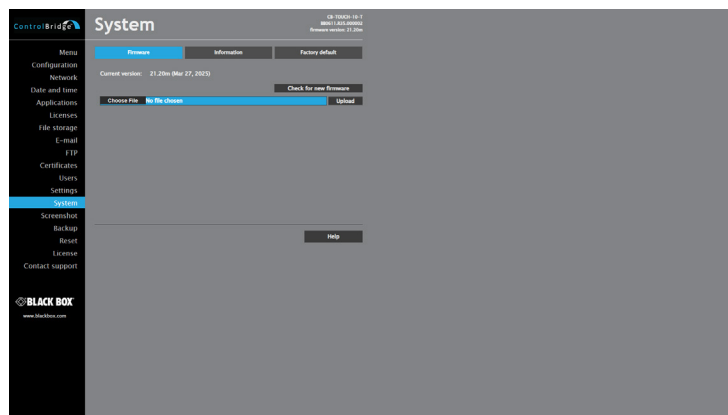


Figure 8-24. Firmware screen.

If your computer network is connected to the internet, you can check for new firmware by pressing the **Check for new firmware** button.

The CB-TOUCH unit verifies whether newer firmware is available on the update server and downloads it, when available.

8.25 Information

Select the **Information** tab.

This page shows basic information about your CB-TOUCH unit's hardware. The CPU type, CPU frequency, and both flash and RAM sizes are displayed.

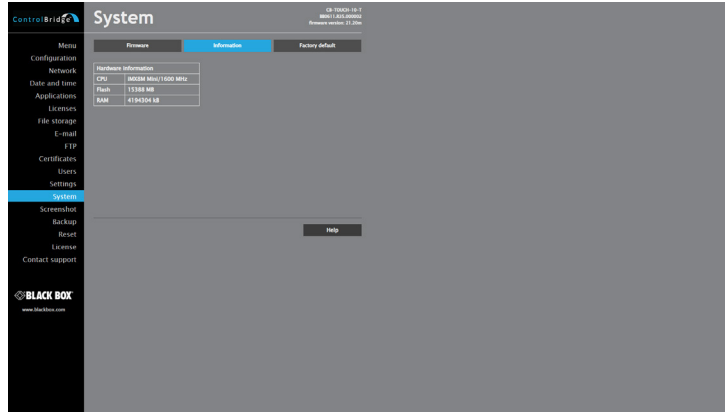


Figure 8-25. Information screen.

8.26 Factory Default

Select the **Factory default** tab.

To completely clear all data and restore factory default settings, press the **Set factory default** button.

This will remove all data, including applications and files. The configuration will be cleared, including IP address, password, and touch-screen calibration values. DHCP will be enabled, and the IP address will be obtained from DHCP server.

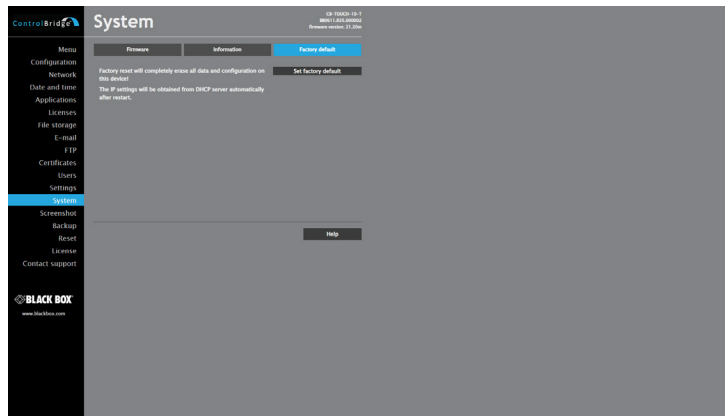


Figure 8-26. Factory default screen.

Steps:

- If you need to put the reservation unit into the factory default mode, delete all user settings, and leave the reservation suite, choose **System** from the left menu. Then choose **Factory default** from the horizontal menu bar.

Chapter 8: Admin Control Panel

- Press the **Set factory default** button.
- Confirm the deletion by pressing the **Yes** button, or cancel it by pressing the **Cancel** button.

8.27 Screen Shot

Select **Screenshot** from the menu on the left side of the screen. This page will show a snapshot of the image being displayed on the CB-TOUCH unit.

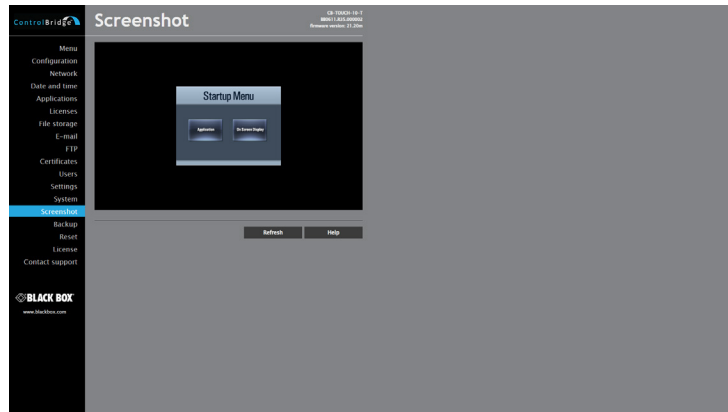


Figure 8-27. Screenshot screen.

8.28 Backup

Select **Backup** from the menu on the left side of the screen.

The Backup menu opens to the **Backup** tab.

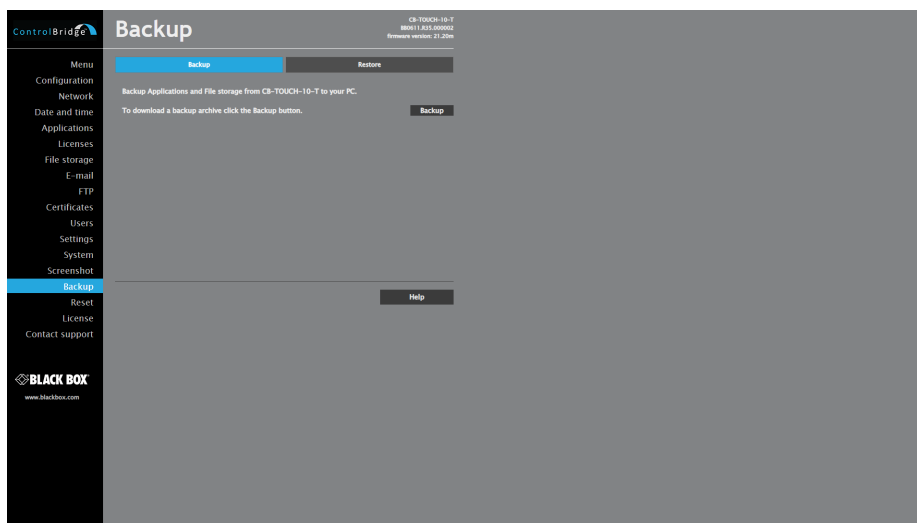


Figure 8-28. Backup screen.

The page is used to back up storage applications, files, and folders. The backup copies all Applications, Application data, File storage, and Web storage to one archive. This archive is saved to the PC.

To start the backup process, press the **Backup** button.

Note: To see the backed-up/restored applications, use the **Applications** menu. To see backed-up/restored files and folders, use the **File Storage** menu. The page is used to back up all applications, files, and folders.

8.29 Restore

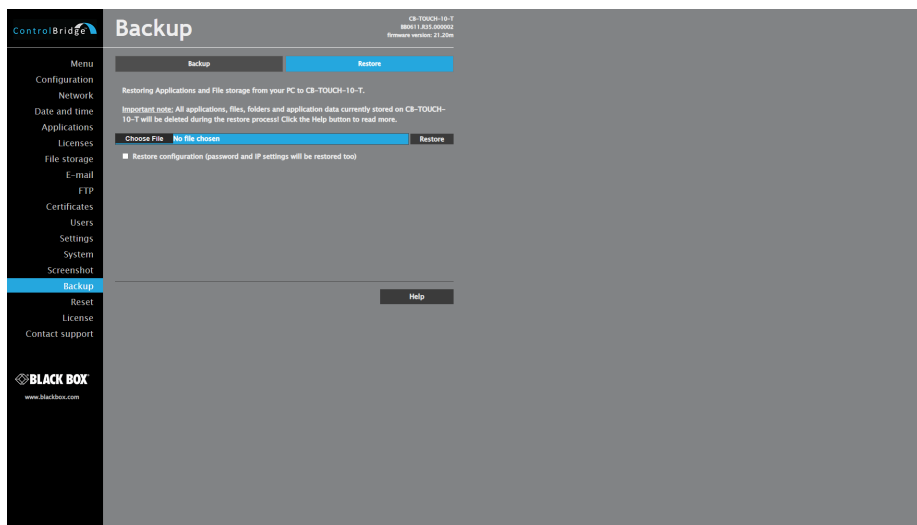


Figure 8-29. Restore screen.

Select the **Restore** Tab.

READ ALL NOTES THAT FOLLOW BEFORE USING THIS OPERATION!

This page is used to restore applications, files, and folders. Restore copies of all applications, files, and folders from a backup archive on the PC to their corresponding locations on the CB-TOUCH unit.

To start the restore process, select the desired backup archive. Then click on the **Restore** button. The restore process can take up to 10 minutes, depending on the size of the files being restored. If you also want the CB-TOUCH unit's settings to be restored, check the **Restore configuration** check box.

The CB-TOUCH unit's settings are accessible via the **Configuration**, **Date and time**, and **Password** menus.

8.30 Reset

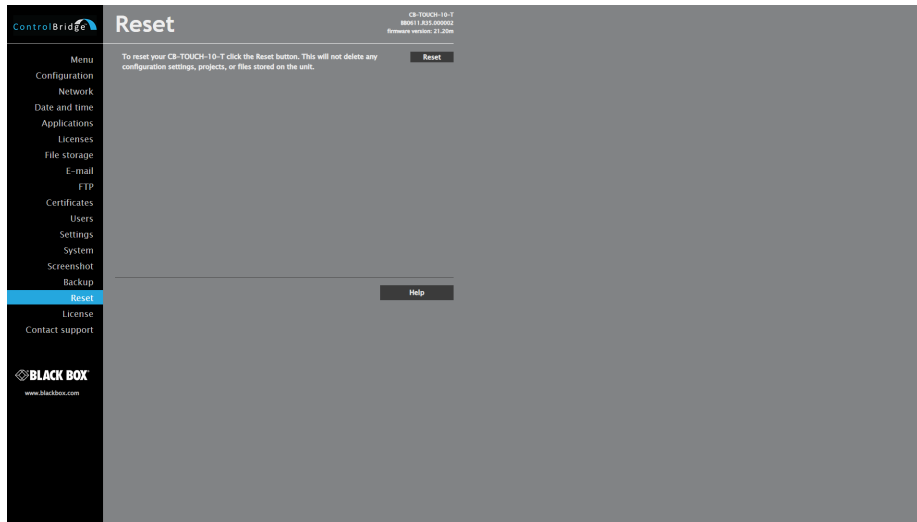


Figure 8-30. Reset screen.

Select **Reset** from the menu on the left side of the screen.

If you need to reset the unit, choose **Reset** from the left menu, and then click on **Reset** in the right part of the screen.

8.31 License



Figure 8-31. License screen.

Select **License** from the menu on the left side of the screen.

This page displays the EULA Software license.

8.32 Contact Support

Select **Contact Support** from the menu on the left side of the screen. This opens an email addressed to the Black Box support team.

When contacting Technical Support, provide as much detail as possible about the issue you're experiencing.



About Black Box

Black Box is a trusted IT solutions provider delivering cutting-edge technology products and world-class consulting services to businesses across the globe in every industry. The breadth of our global reach and depth of our expertise accelerate customer success by bringing people, ideas, and technology together to solve real-world business problems.

© Copyright 2016, 2025. Black Box Corporation. All rights reserved. Black Box® and the Double Diamond logo are registered trademarks of BB Technologies, Inc.

Any third-party trademarks appearing in this manual are acknowledged to be the property of their respective owners.

EN_IoT_Manual_CB-Touch_Rev2_2506

LEARN MORE | blackbox.com