

LDS138-151

All-in-One Direct View LED Display Solution Kit

Quick Start Guide

快速入門指南

Guide de démarrage rapide

Schnellstartanleitung

Guía rápida de inicio

FCC Compliance Statement

This device complies with part 15 of FCC Rules. Operation is subject to the following two conditions: (1) this device may not cause harmful interference, and (2) this device must accept any interference received, including interference that may cause undesired operation.

Industry Canada ICES-003 Compliance: CAN ICES (B) / NMB (B)

CE Conformity for European Countries

The device complies with the EMC Directive 2014/30/EU and Low Voltage Directive 2014/35/EU and Radio Equipment Directive 2014/53/EU.

Declaration of RoHS2 Compliance

This product has been designed and manufactured in compliance with Directive 2011/65/EU of the European Parliament and the Council on restriction of the use of certain hazardous substances in electrical and electronic equipment (RoHS2 Directive) and is deemed to comply with the maximum concentration values issued by the European Technical Adaptation Committee (TAC).



LDS138-151



Support Center



www.viewsonic.com



ViewSonic Europe Limited
Haaksbergweg 75
1101 BR Amsterdam
Netherlands



+31 (0) 650608655



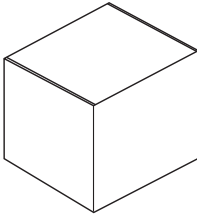
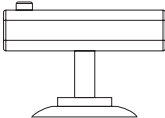
EPREL@viewsoniceurope.com



<https://www.viewsonic.com/eu/>

Package Contents

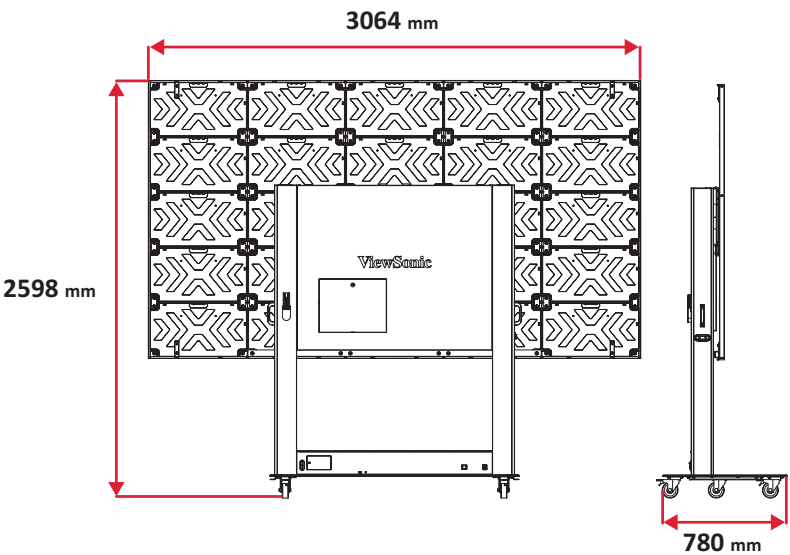
| Item | Quantity | Note |
|---|----------|---|
| LED Display with Motorized Trolley Cart | 1 | |
| Quick Start Guide | 1 | |
| Accessory Box | 1 | <ul style="list-style-type: none"> • Hand Tool Set x 2 • Remote Control x 1 • Batteries x 2 • Anti Static Gloves x 2 • USB Flash Drive x 1 • C8365 Chips x 15 • Bebug Network Cable x 1 • Power Cord x1 |
| Spare LED Modules | 14 | The quantity will vary by country |

| | Item | Quantity | Note |
|-----------------------------|---|----------|------|
| 3 in 1 Boards |  | 3 | |
| LED Module Maintenance Tool |  | 1 | |

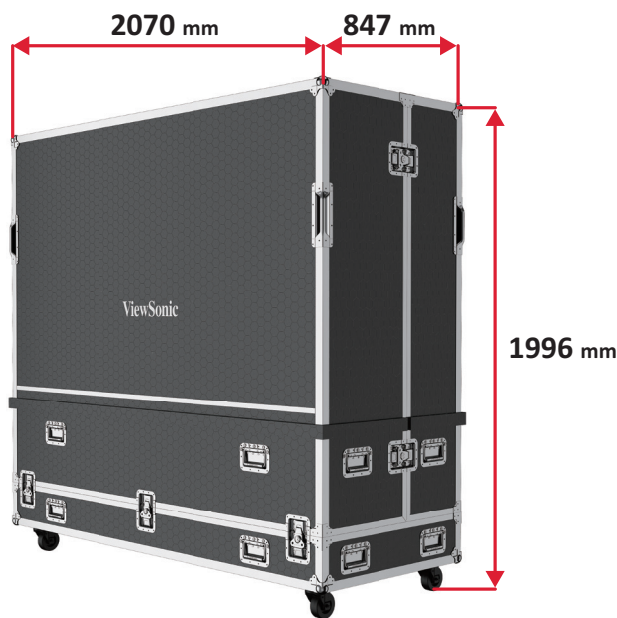
NOTE:

- This product is packed in a flight case.
- Due to the size and weight, it is recommended that two or more people handle it.

Physical Dimensions for the Display



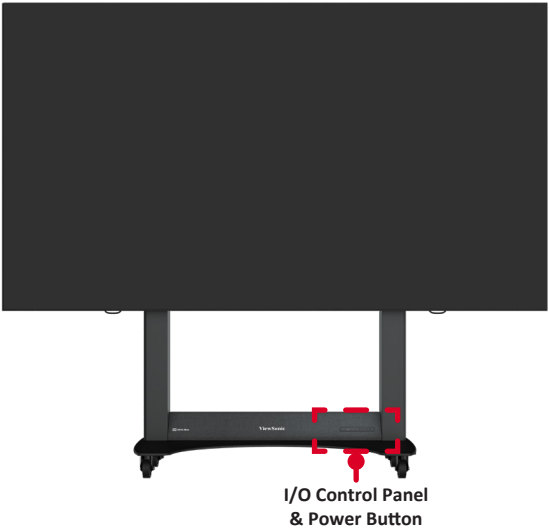
Physical Dimensions for the Flight Case



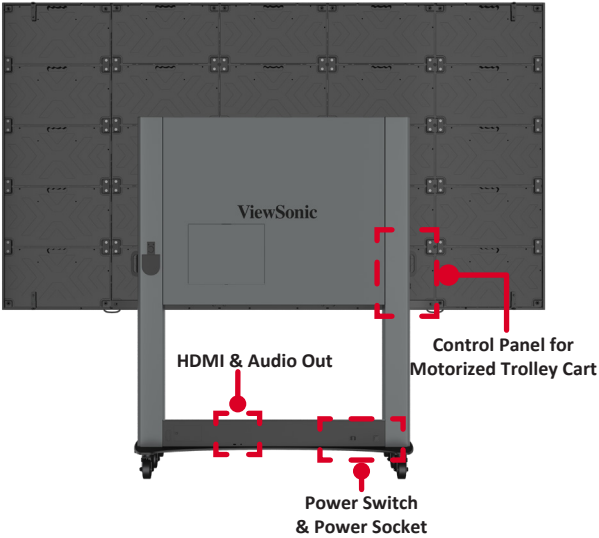
Product Overview

ENGLISH

Front View



Rear View



Control Panel for Motorized Trolley Cart



- **Use the "Up" (▲) key to lift the display.** The lift will automatically stop upon reaching the height limit. Please note, the "Up" key is a "click to act" key, i.e., upon releasing the key the lift will not immediately stop. Instead, it will slow down for a short distance then stop.
- **Use the "Down" (▼) key to lower the display.** The lift will automatically stop upon reaching the height limit. Please note, the "Down" key is a "click to act" key, i.e., upon releasing the key the lift will not immediately stop. Instead, it will slow down for a short distance then stop.

Before Turning the LED Display On

Conduct a visual walkaround inspection for any uneven LED modules. If uneven modules are found, please wear the included anti-static gloves and gently press the LED modules back into place.

NOTE: Make sure to use minimal force, and do not press hard on the LED modules. Applying undue force may damage the modules and, possibly, the Cabinets.



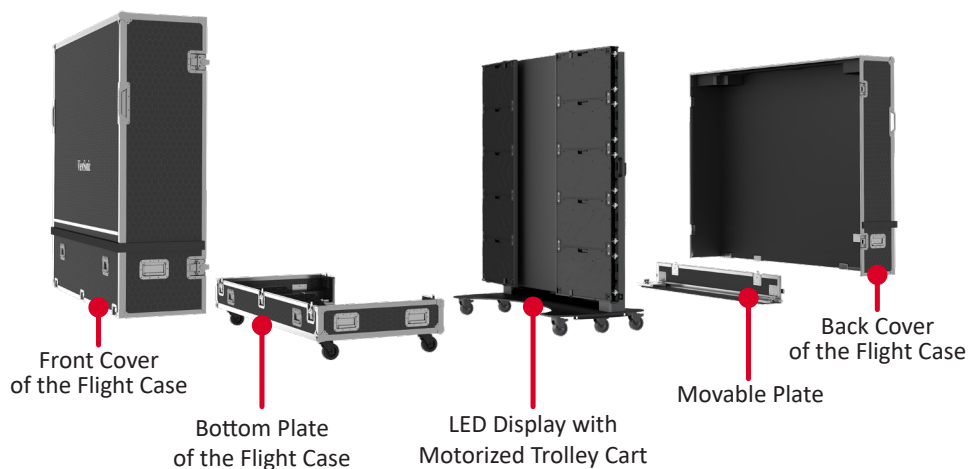
IMPORTANT

If your LED Display has been stored in a low temperature (below 0° C [32° F]) location, move the Display to a location with an ambient temperature within the Operating Temperature range (0° C~40° C [32° F~104° F]) first. Leave the Display off there for **at least 30 minutes** before turning it on. Once the Display temperature has warmed up enough, turn the LED Display on and let it run for **20 minutes**.

NOTE: Before pressing the **Power** button, make sure the power cord is connected, plugged into a power outlet, and the Power Switch is in the “on” position.

If the normal operation of your LED Display does not resume or the Display temperature remains low after you followed the instructions, contact ViewSonic® for technical support.

Schematic Diagram of Components



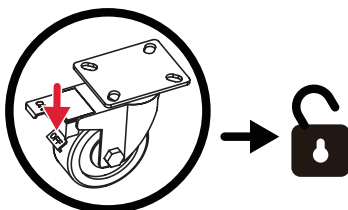
I. Handling and Moving Flight Cases

! IMPORTANT

If your LED Display has been stored in a low temperature (below 0° C [32° F]) location, please visit our website to download the latest version of the User Guide for detailed directions to properly warm up the Display.

1. Before moving the flight case, press down the "OFF" foot pedal on the rollers at the bottom to unlock them.

NOTE: There are four of the six rollers with brakes to unlock.



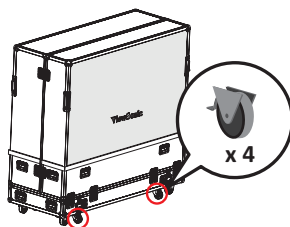
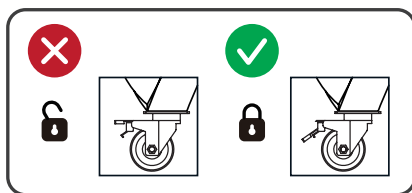
2. Make sure that the group is level, with the height difference less than 1.5 cm, and the ground can comfortably hold more than the weight of the entire equipment.
3. During moving, at least two adults are needed.

! Note: When storing the flight case, make sure the ground is level and that all rollers are locked.

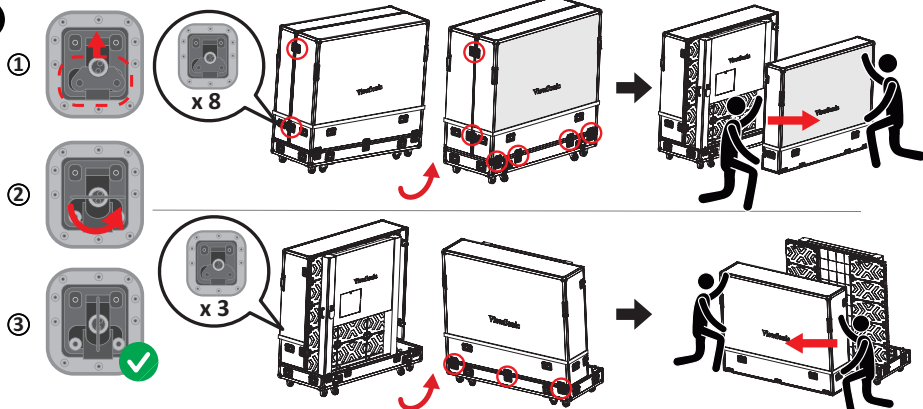
! Note: For detailed instructions on the Display, please see the User Guide.

II. Unpacking Operation

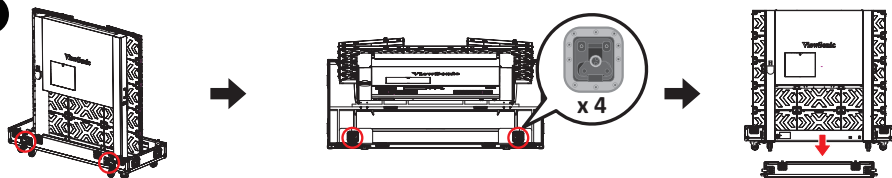
1



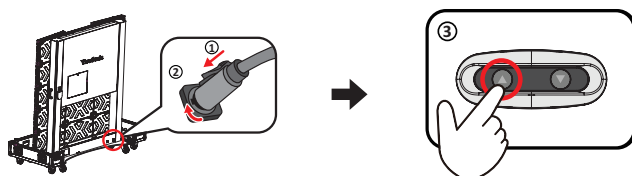
2



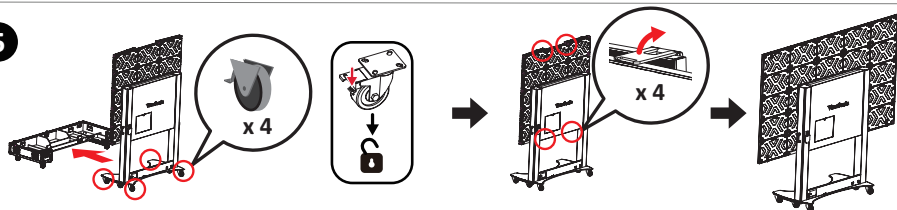
3



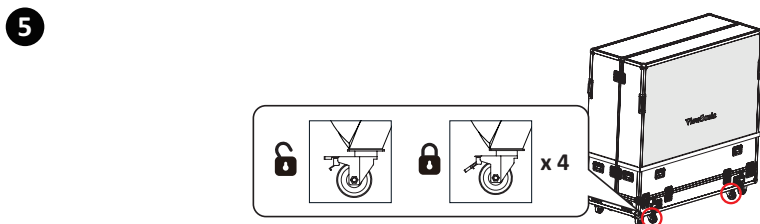
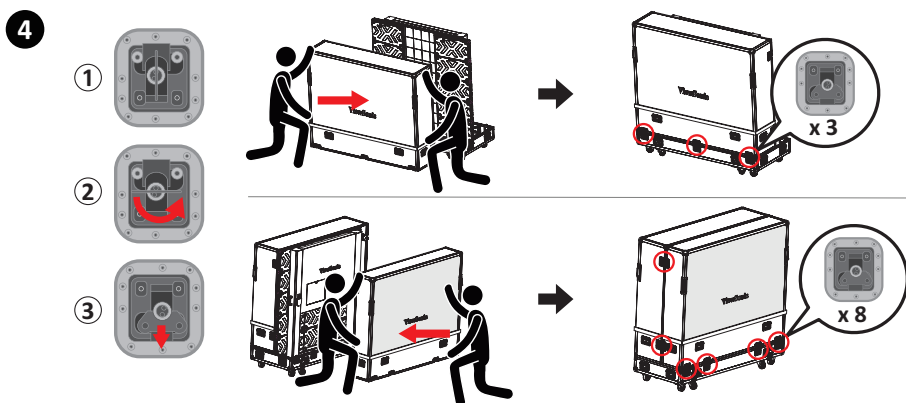
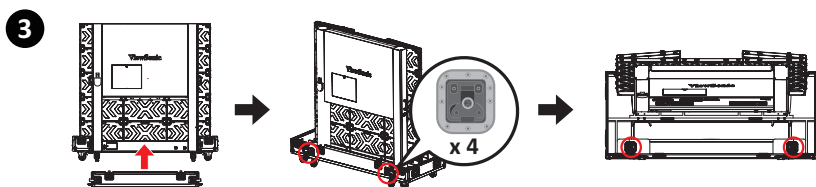
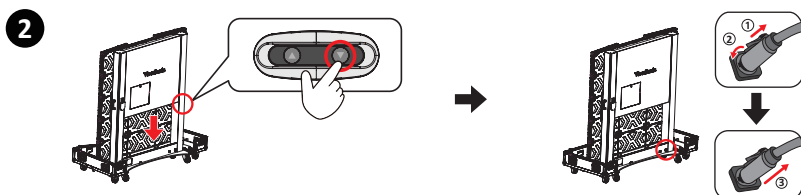
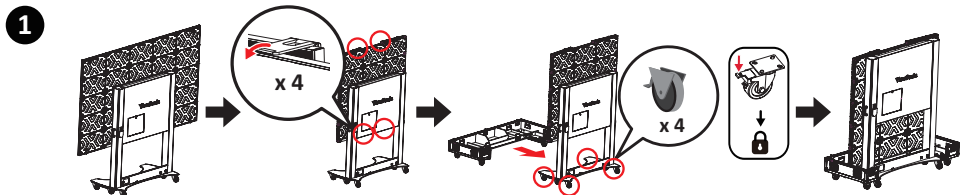
4



5



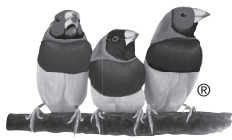
III. Packing and Handling Operation



Specifications

| Item | Category | Specifications |
|----------------|------------------------|---|
| Model | | LDS138-151 |
| LED Screen | Type | Direct View LED Display |
| | Size | 138" |
| | Active Size (H x V) | 3,050 mm x 1,715 mm |
| | | 120.08" x 67.52" |
| | Pitch Size | 1.58 mm |
| | Resolution | FHD, 1920 x 1080 |
| | Refresh Frequency | 3840 Hz |
| | Contrast Ratio | 6500:1 (Typical) |
| | Brightness | 100-600 cd/m2 (100 levels of adjustment) |
| | LED Lifespan | 100,000 hours |
| Input Signal | | 4 x HDMI (v. 2.0; HDCP 2.2) |
| | | 2 x USB Type A (2.0) |
| | | 1 x USB Type A (3.0) |
| | | 1 x LAN (RJ45) |
| | | 1 x IR in |
| | | 1 x USB Type C (data only) |
| | | 1 x RS-232 (for control) |
| | | 1 x RJ45 (for LAN control) |
| | | 1 x Wi-Fi Input (2.4 G/5 G Hz) |
| | | |
| Output Signal | | 1 x HDMI Out |
| | | 2 x Audio Out (1 x 3.5 mm internal; 1 x 3.5 mm external) |
| | | 1 x USB Type A (Shared) [5V/2A] |
| Speaker Output | | 2 x 30W |
| RS-232 | | RS-232 Serial Control |
| Power | Voltage | 100-120V/20A ~ 50/60Hz 220-240V/10A ~ 50Hz (will vary by country) |

| Item | Category | Specifications |
|------------------------------------|---------------------|--|
| Operating Conditions | Altitude | ≤ 5,000 m |
| | | ≤ 16,404 ft |
| | Relative Humidity | 10%~80% non-condensing |
| | Temperature | 0° C to 40° C |
| | | 32° F to 104° F |
| Storage Conditions | Altitude | ≤ 5,000 m |
| | | ≤ 16,404 ft |
| | Relative Humidity | 10%~85% non-condensing |
| | Temperature | -10° C to 60° C |
| | | 14° F to 140° F |
| Physical Dimensions (W x H x D) | Without Flight Case | 1,851~3,064 x 1,948~2,598 x 780 mm |
| | | 72.88"~120.63" x 76.70"~102.29" x 30.71" |
| | With Flight Case | 2,070 x 1,996 x 847 mm |
| | | 81.50" x 78.58" x 33.35" |
| Weight | Physical | 250 kg |
| | | 551 lb |
| Power Consumption | On | 581W (Normal) 1745W (Max) |
| | Off | < 0.5W |



ViewSonic®