

HP EliteBook X G1i 14 inch Next Gen AI PC

HP EliteBook X Flip G1i 14 inch Next Gen AI PC

Drive strategy with the efficiency and power of next-gen AI.

Discover what you can do with AI applications⁴, advanced collaboration features, four use modes (X Flip), and optimized battery life on the HP EliteBook X G1i Series.



Optimize time and streamline your effort with next-gen AI

Accelerate work with 48 TOPS and AI for transcribing meetings and building presentations that quickly bring your strategies to life. Built-in AI performance management helps extend battery life so you can focus.^{3,4}



Protect your sensitive information from prying eyes

Using the new AI-enhanced ISP+ webcam sensor, your PC will notify you when an onlooker is behind you and automatically turn on Sure View³⁶ to prevent your onscreen content from being seen.

Intel® powers next-gen AI PCs

Free up time to focus on what matters with the latest Intel® Core™ Ultra processor with an NPU^{2,3} purposely built for the next era of AI software.⁴ Three compute engines manage AI workloads, help improve video conferencing, and allow for advanced content creation.

Flexible and versatile Flip design

Four versatile use modes of the x360 Flip design let you get work done, take notes, share content, and enjoy some downtime, bringing new life to collaboration, productivity, and relaxation. Capture ideas and annotate documents with inking sensitivity and low activation force of the optional HP Rechargeable Active Pen.⁴⁴ It even sends a proximity alert if it's left behind.

Connect and engage effortlessly with dynamic AI adjustments

With AI Companion¹⁰ you can discover information, advice, creative ideas, or just conversation. Ensure that you and your ideas take the main stage in every collaborative session with Poly Camera Pro's⁸ AI background adjustments, automatic framing, and spotlight.⁸

Robust security against quantum computing attacks

Fortify your workforce against quantum threats with the built-in HP Endpoint Security Controller (ESC).⁶ The latest ESC protects firmware against quantum computer attacks and helps ensure the integrity of sensitive and regulated data.

Help protect our shared future

With over 70% of major parts⁴² containing recycled materials⁴³, including recycled fishing nets⁴⁹ in the keyboard, the HP EliteBook X G1i/Flip G1i provide power data tracking and suggestions to reduce energy use representing the latest in design from HP.⁹

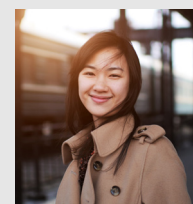


 Copilot+PC⁵⁰

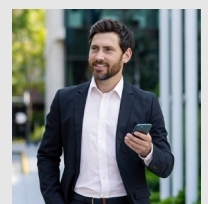
intel.

 Windows 11

Designed for



Modern
Leaders



Road
Warriors

Recommended ecosystem³⁹



Poly Voyager Focus
2 USB-A Headset &
charge stand



HP Series 7 Pro 31.5"
4K Thunderbolt 4
Monitor



HP Rechargeable
Active Pen G3



HP 925 Ergonomic
Wireless Mouse

HP EliteBook X Flip G1i



| | |
|----------------------------|--|
| Form Factor/ Design | x360 Flip Design Atmospheric Blue & Glacier Silver Aluminum chassis |
| OS | Windows 11 Home ¹ ; Windows 11 Pro ¹ |
| Processor/Chipset | Latest generation Intel® Core™ Ultra 5 and 7 processors ² with NPU ⁹ |
| Display/Graphics | 14.0 in diagonal, WUXGA (1920 x 1200), Touch ¹² , UWVA, BrightView, Low Blue Light, 800 nits, Low-Power, sRGB 100%, HP Sure View ³⁶ LCD Panel 14.0 in diagonal, WUXGA (1920 x 1200), Touch ¹² , UWVA, Anti-Glare, Low Blue Light, 800 nits, Low-Power, sRGB 100%, HP Sure View ³⁶ LCD Panel 14.0 in diagonal, WUXGA (1920 x 1200), Touch ¹² , UWVA, BrightView, WLED+ Low Blue Light, 400 nits, Low-Power, sRGB 100%, LCD Panel 14.0 in diagonal, WUXGA (1920 x 1200), Touch ¹² , UWVA, Anti-Glare, WLED+ Low Blue Light, 400 nits, Low-Power, sRGB 100%, LCD Panel 14.0 in diagonal, 2.5K (2560 x 1600), Touch ¹² , 120Hz (VRR), UWVA, Anti-Glare, WLED+ Low Blue Light, 400 nits, DCI-P3 100% + Adobe 100%, LCD Panel Integrated Intel® Graphics |
| Dimensions/ Weight | 313.9 mm (W) x 219.9 mm (D) x 10.5mm (front) / 14.7mm (rear) Maximum height: 17.45mm ¹⁹ 12.36 in (W) x 8.66 in (D) x 0.41 in (front) / 0.58 in (rear), Maximum height: 0.68 in ¹⁹ Starting at 1.39 kg, 3.06 lb (Weight will vary by configuration. Does not include power adapter.) |
| System Memory | 16 GB up to 32 GB LPDDR5x-8533MT/s RAM, Memory on Package ¹¹ |
| Storage Options | 512 GB up to 2 TB PCIe® Gen4x4 NVMe™ M.2 SSDTLC ⁴¹ , 512 GB PCIe® Gen4x4 NVMe™ M.2 SED SSDTLC ⁴¹ 256GB ¹⁵ PCIe® NVMe™ M.2 SSD ⁴¹ |
| Battery/Adapters | HP Long Life 3-cell, 56 Wh polymer; HP Long Life 6-cell, 68 Wh polymer HP 65 W USB Type-C® slim adapter; HP 65 W USB Type-C® adapter; HP 65 W USB Type-C® Halogen Free adapter; HP 100 W USB Type-C® slim adapter; HP 65 W USB Type-C® GaN slim adapter ³⁹ |
| Input/Output | 2 Thunderbolt™ 4 with USB Type-C® 40 Gbps signaling rate (USB Power Delivery, DisplayPort™ 2.1) ²⁰ ; 1 USB Type-C® 10 Gbps signaling rate (USB Power Delivery, DisplayPort™ 1.4); 1 USB Type-A 5 Gbps signaling rate ²⁰ (1 powered); 1 HDMI 2.1 ³⁷ ; 1 stereo headphone/microphone combo jack; (HDMI cable sold separately.); Optional Ports; 1 nano SIM |
| Connectivity Options | HP Module with NXP NFC Controller NPC300 I2C NCI (optional); 4G LTE Advanced Pro Cat 16; Intel® 5G Solution 5000 ³⁰ ; Intel® Wi-Fi 7 BE201 (2x2) ^{13,40} and Bluetooth® 5.4 wireless card, vPro®; Intel® Wi-Fi 7 BE201 (2x2) ^{13,40} and Bluetooth® 5.4 wireless card, non-vPro® |
| Multimedia | 5 MP camera; IR Camera; AI ISP Camera Audio by Poly Studio, four stereo speakers, dual microphones enhanced by AI noise reduction ⁵ |
| Keyboard & pad | HP Premium Keyboard – backlit keyboard with spill-resistant; Clickpad with multi-touch gesture support, taps enabled as default; Microsoft Precision Touchpad; |
| Manageability/ Software | HP Client Management Script Library (download); HP Driver Packs (download); HP Client Catalog (download); HP Manageability Integration Kit Gen4 (download) ²⁶ ; HP Image Assistant Gen5 (download); HP Patch Assistant (download); HP Cloud Recovery; HP Connect for Microsoft Endpoint Manager HP Connection Optimizer; HP Hotkey Support; HP Support Assistant; HP Power Manager; ³³ myHP; ²¹ HP Privacy Settings; HP Notifications; HP PC Hardware Diagnostics Windows; HP Smart Support; HP Services Scan; Buy Microsoft Office (Sold separately); HP AI Companion; ¹⁰ Poly Camera Pro ⁵ |
| Security | Wolf Security for Business ⁷ includes: BIOSphere; Endpoint Security Controller (Gen5) ⁶ ; Sure Start ²² ; Sure Admin ²³ ; Sure Recover (Cloud) ²⁴ ; Sure Click (Basic) ²⁵ ; Sure Sense (Basic) ²⁷ ; Secure Erase; Privacy Camera ¹⁴ ; Tamper Lock ⁴⁸ ; Seamless Firmware Updates, Sure Run. ³² Additional Wolf Security attach solutions: Wolf Pro Security Edition PC ⁴⁶ ; Sure Click Enterprise ⁴⁷ ; Other Security Features: Absolute persistence module; BIOS Update via Network; TPM 2.0 embedded security chip (Common Criteria EAL4+ and FIPS 140-2 Level 2 Certified); HP Wake on WLAN; Secured-Core PC Enable; Security lock slot |
| Sustainability | At least 70% of the major parts contain recycled material including up to 75% recycled Aluminum in the cover ²⁹ + 20% recycled cooking oil in the bezel ^{16,29} , 30% Ocean-bound plastic in speaker ^{34,29} , 30% Post-consumer plastic + recycled fishing net materials in keyboard ^{29,31} , 100% recycled or certified sustainable sourced packaging ¹⁷ Low Halogen; Bulk packaging available; ENERGY STAR® certified; CECP; IT ECO Declaration; EPEAT Climate+™ Gold registered in the U.S. ²⁸ ; SEPA; Taiwan Green Mark; Japan PC Green Label; KOECO; TCO Certified; FEMP; Power Consumption Measurement ³⁵ |



HP EliteBook X G1i



| | |
|----------------------------|--|
| Form Factor/ Design | Clamshell Atmospheric Blue & Glacier Silver Magnesium chassis |
| OS | Windows 11 Home ¹ ; Windows 11 Pro ¹ |
| Processor/Chipset | Latest generation Intel® Core™ Ultra 5 and 7 processors ² with NPU ⁹ |
| Display/Graphics | 14.0 in diagonal, WUXGA (1920 x 1200), UWVA, Anti-Glare, WLED + Low Blue Light, 800 nits, sRGB 100%, HP Sure View ³⁶ LCD Panel 14.0 in diagonal, WUXGA (1920 x 1200), Touch ¹² , UWVA, Anti-Glare, WLED + Low Blue Light, 800 nits, sRGB 100%, HP Sure View ³⁶ LCD Panel 14.0 in diagonal, WUXGA (1920 x 1200), UWVA, Anti-Glare, WLED + Low Blue Light, 400 nits, low power, sRGB 100%, LCD Panel 14.0 in diagonal, 2.5K (2560 x 1600), 120Hz (VRR), UWVA, Anti-Glare, WLED+ Low Blue Light, 400 nits, DCI-P3 100% + Adobe 100%, LCD Panel 14.0 in diagonal, WUXGA (1920 x 1200), Touch ¹² , UWVA, Anti-Glare, LED, 500 nits, sRGB 100%, LCD Panel Integrated Intel® Graphics |
| Dimensions/ Weight | 313.9 mm (W) x 219.9 mm (D) x 10.5mm (front)/14.9mm (rear). Maximum height 17.55mm ¹⁹ 12.36 in (W) x 8.66 in (D) x 0.41 in (front) / 0.59 in (rear). Maximum height: 0.69 in ¹⁹ Starting at 1.18 kg, 2.60 lb (Weight will vary by configuration. Does not include power adapter.) |
| System Memory | 16 GB up to 32 GB LPDDR5x-8533MT/s RAM, Memory on Package ¹¹ |
| Storage Options | 512 GB up to 2 TB PCIe® Gen4x4 NVMe™ M.2 SSDTLC ⁴¹ ; 512 GB PCIe® Gen4x4 NVMe™ M.2 SED SSDTLC ⁴¹ 256 GB up to 1 TB PCIe® NVMe™ M.2 SSD ⁴¹ |
| Battery/Adapters | HP Long Life 3-cell, 56 Wh polymer; HP Long Life 6-cell, 68 Wh polymer HP 65 W USB Type-C slim adapter; HP 65 W USB Type-C adapter; HP 65 W USB Type-C Halogen Free adapter; HP 100 W USB Type-C slim adapter; HP 65 W USB Type-C GaN slim adapter ³⁹ |
| Input/Output | 2 Thunderbolt™ 4 with USB Type-C® 40Gbps signaling rate ²⁰ (USB Power Delivery, DisplayPort™ 2.1) ²⁰ ; 1 USB Type-C® 10Gbps signaling rate ²⁰ (USB Power Delivery, DisplayPort™ 1.4); 1 USB Type-A 5Gbps signaling rate ²⁰ (1 powered); 1 HDMI 2.1 ³⁷ ; 1 stereo headphone/microphone combo jack ; (HDMI cable sold separately.); Optional Ports; 1 nano SIM |
| Connectivity Options | HP Module with NXP NFC Controller NPC300 I2C NCI (optional); 4G LTE Advanced Pro Cat 16; Intel® 5G Solution 5000 ³⁰ ; Intel® Wi-Fi 7 BE201 (2x2) ^{13,40} and Bluetooth® 5.4 wireless card, vPro®; Intel® Wi-Fi 7 BE201 (2x2) ^{13,40} and Bluetooth® 5.4 wireless card, non-vPro® |
| Multimedia | 5 MP camera; IR Camera; AI ISP Camera Audio by Poly Studio, four stereo speakers, dual microphones enhanced by AI noise reduction ⁵ |
| Keyboard & pad | HP Premium Keyboard – backlit keyboard with spill-resistant; Clickpad with multi-touch gesture support, taps enabled as default; Microsoft Precision Touchpad; |
| Manageability/ Software | HP Client Management Script Library (download); HP Driver Packs (download); HP Client Catalog (download); HP Manageability Integration Kit Gen4 (download) ²⁶ ; HP Image Assistant Gen5 (download); HP Patch Assistant (download); HP Cloud Recovery; HP Connect for Microsoft Endpoint Manager HP Connection Optimizer; HP Hotkey Support; HP Support Assistant; HP Power Manager; ³³ myHP; ²¹ HP Privacy Settings; HP Notifications; HP PC Hardware Diagnostics Windows; HP Smart Support; HP Services Scan; Buy Microsoft Office (Sold separately); HP AI Companion; ¹⁰ Poly Camera Pro ⁵ |
| Security | Wolf Security for Business ⁷ includes: BIOSphere; Endpoint Security Controller (Gen5) ⁶ ; Sure Start ²² ; Sure Admin ²³ ; Sure Recover (Cloud) ²⁴ ; Sure Click (Basic) ²⁵ ; Sure Sense (Basic) ²⁷ ; Secure Erase; Privacy Camera ¹⁴ ; Tamper Lock ⁴⁸ ; Seamless Firmware Updates, Sure Run. ³² Additional Wolf Security attach solutions: Wolf Pro Security Edition PC ⁴⁶ ; Sure Click Enterprise ⁴⁷ ; Other Security Features: Absolute persistence module; BIOS Update via Network; TPM 2.0 embedded security chip (Common Criteria EAL4+ and FIPS 140-2 Level 2 Certified); HP Wake on WLAN; Secured-Core PC Enable; Security lock slot |
| Sustainability | At least 70% of the major parts contain recycled material including up to 90% recycled Magnesium ³⁸ + 20% recycled cooking oil in the bezel ^{16,29} 30% Ocean-bound plastic in speaker; ^{34,29} 30% Post-consumer plastic + recycled fishing net materials in keyboard; ^{29,31} 100% recycled or certified sustainable sourced packaging ¹⁷ ; Low Halogen; Bulk packaging available; ENERGY STAR® certified; CECP; IT ECO Declaration; EPEAT Climate+™ Gold registered in the U.S. ²⁸ ; SEPA; Taiwan Green Mark; Japan PC Green Label; KOECO; TCO Certified; FEMP; Power Consumption Measurement ³⁵ |



HP EliteBook X & Flip G11

1. Not all features are available in all editions or versions of Windows. Systems may require upgraded and/or separately purchased hardware, drivers, software or BIOS update to take full advantage of Windows functionality. Windows 11 is automatically updated, which is always enabled. High speed internet and Microsoft account required. ISP fees may apply and additional requirements may apply over time for updates. See <http://www.windows.com>.
2. Multicore is designed to improve performance of certain software products. Not all customers or software applications will necessarily benefit from use of this technology. Performance and clock frequency will vary depending on application workload and your hardware and software configurations. Intel's numbering, branding and/or naming is not a measurement of higher performance.
3. Features and software that require a NPU may require software purchase, subscription or enablement by a software or platform provider, and third party software may have specific configuration or compatibility requirements. Potential NPU inferencing performance varies by use, configuration, and other factors.
4. ISV solutions are sold separately and may require a subscription and NPU.
5. Requires myHP application and Windows OS.
6. Requires Windows 10 or higher. For supported HP PCs with the latest HP Endpoint Security Controller (Gen 5). See <https://h20195.www2.hp.com/v2/GetDocument.aspx?docname=4AA8-3644ENW>.
7. HP Wolf Security for Business requires Windows 10 or 11 Pro and higher, includes various HP security features and is available on HP Pro, Elite, Workstation, and RPOS products. See product details for included security features.
8. Requires Windows OS and setup through Windows Hello.
9. AI applications that require an NPU may require software purchase, subscription or enablement by a software or platform provider, and third-party software may have specific configuration or compatibility requirements. Potential NPU inferencing performance varies by use, configuration, and other factors.
10. HP AI Companion is available preloaded on select HP next gen AI PCs or is available for download from the Microsoft store and requires a HP next gen AI PC with a NPU supporting 40-60 TOPS and requires Windows 11. Perform requires account set up within 30 days of PC boot or enrollment through the HP AI Companion app. Some features require customer upload of local data. Five (5) library 100MB limit each, supported files may vary and at launch include pdf, .txt, .docx files.
11. For systems configured with more than 3 GB of memory and a 32-bit operating system, all memory may not be available due to system resource requirements. Addressing memory above 4 GB requires a 64-bit operating system. Memory modules support data transfer rates up to 2666 MT/s, 2933 MT/s or 3200 MT/s as depending on processor config; with 1 DIMM per channel. Additional DIMM loading on any channel may impact maximum memory speed. Actual data rate is determined by the system's configured; See processor specifications for supported memory data rate.
12. Touch will reduce actual brightness
13. Wireless access point and Internet service required and sold separately. Availability of public wireless access points limited. Wi-Fi 7 (802.11BE) functionality requires compatible Windows 11 OS, compatible processor, and separately purchased Wi-Fi 7 router to support backwards compatibility with prior 802.11 specs. Available in countries where Wi-Fi 7 is supported. The specification for 802.11BE is a draft specification and is not final. If the final specification differs from the draft specification, it may affect the ability of the device to communicate with other 802.11BE devices.
14. HP Privacy Camera only available PCs equipped with HD or IR camera and must be installed at the factory
15. Applies to HP PCs, Workstations, and Displays manufactured after January 2019. Based on most Gold and Silver (including Climate+) EPEAT® registrations and according to IEEE 1680.1-2018 EPEAT®. Status varies by country. Visit www.epeat.net for more information.
16. Recycled metal is expressed as a percentage of the total weight of the metal according to ISO 14021 definitions for metal parts over 25 grams
17. HP paper and fiber based packaging for PCs, displays, home and office print, and supplies is reported by suppliers as recycled or certified, with a minimum of 97% by volume verified by HP. Packaging is the box that comes with the product and all paper-based materials inside the box. Packaging for commercial, personal systems accessories, and spare parts is not included.
18. Recycled plastic is expressed as a percentage of the total weight plastic. Post-consumer recycled is based on the definition set in the EPEAT standard for computers, IEEE 1680.1-2018 standard. Percent of recycled material varies by product.
19. Front height measurement is near the front edge where the chassis bottom cover taper begins. Back height measurement is near the back edge where the chassis bottom cover taper ends, excluding transition area to rubber feet. Maximum height is measured at 17.45mm (flip) 17.55mm (clamshell).
20. Actual throughput may vary
21. Requires Windows OS.
22. HP Sure Start Gen7 is available on select HP PCs and requires Windows 10 Pro and higher
23. HP Sure Admin requires Windows 10 and HP BIOS.
24. HP Sure Recover is available on select HP PCs and requires Windows 10 and an open network connection. You must back up important files, data, photos, videos, etc. before using HP Sure Recover to avoid loss of data. Network based recovery using Wi-Fi is only available on PCs with Intel Wi-Fi Module.
25. HP Sure Click requires Windows 10 and higher. See https://bit.ly/2PrLT6A_SureClick for complete details.
26. HP Manageability Integration Kit can be downloaded from <http://www8.hp.com/us/en/ads/client-management/overview.html>.
27. HP Sure Sense is available on select HP PCs with Windows 10 Pro, Windows 10 Enterprise, Windows 11 Pro, or Windows 11 Enterprise OS.

28. Based on US EPEAT® registration according to IEEE 1680.1-2018 EPEAT®. EPEAT® status varies by country. Visit www.epeat.net for more information.
29. Percent of recycled material varies by product.
30. Intel® 5G module is optional and must be configured at the factory. Module designed for 5G SA (standalone), and 5G NR NSA (non-standalone) networks as carriers deploy Evolved-Universal Terrestrial Radio Access New Radio Dual Connectivity (ENDC) with both 100MHz of 5G NR and LTE channel bandwidth, using 256QAM 4x4 as defined by 3GPP. Module requires activation and separately purchased service contract. Check with service provider for coverage and availability in your area. Data connection, upload and download speeds will vary due to network, location, environment, network conditions, and other factors. Backwards compatible to 4G LTE and 3G HSPA technologies. 5G module planned to be available in select platforms and select countries, where carrier supported.
31. Percentage of recycled fishing net plastic contained in each component varies by product. Recycled fishing net plastic is expressed as a percentage of the total weight plastic.
32. HP Sure Run Gen5 is available on select HP PCs and requires Windows 10.
33. HP Power Manager requires Windows 10 and higher and can be downloaded from the Microsoft Store.
34. Speakerbox made with at least 30% ocean bound plastic.
35. Power Consumption Measurement with real-time total power usage tracking will release in 2024 on our commercial notebook line. The energy consumption data is planned to be available to end users within myHP and ITDMs via HP Proactive Insights in May 2024. Fleet management within HP Proactive Insights requires Windows 10 or higher and registration for the Workforce Experience platform at <https://admin.hp.com>. Some features and capabilities may require additional purchase of HP services and/or commercial hardware capable of supporting the HP Insights agent for Windows, Mac, & Android. Activation and restrictions may apply. Select HP Workforce Solutions require an HP Insights agent for Windows, Mac, & Android, available for download at <https://admin.hp.com/software>. For full system requirements and services that require the agent, please visit <https://admin.hp.com/requirements>. The agent collects telemetry and analytics around devices and applications that integrate into the Workforce Experience platform and is not sold as a standalone service. Internet access with connection to the Workforce Experience platform is required. HP follows stringent GDPR privacy regulations, and the platform is ISO27001, ISO27701, ISO27017 and SOC2 Type2 certified for Information Security.
36. HP Sure View integrated privacy screen is an optional feature that must be configured at purchase and is designed to function in landscape orientation.
37. HDMI 2.1 Support resolution up to 4K @60 Hz
38. 90% recycled magnesium by weight: Covers includes top cover, palm rest cover, and bottom cover.
39. Optional feature must be configured at time of purchase.
40. Wi-Fi® supporting gigabit data rate is achievable with Wi-Fi 7 (802.11BE) when transferring files between two devices connected to the same router. Requires a wireless router, sold separately, that supports 160MHz channels.
41. For storage drives, GB = 1 billion bytes, TB = 1 trillion bytes. Actual formatted capacity is less. Portion of internal storage is reserved for preloaded content.
42. Major parts do not include screws, cables, inner frame, SSD, memory, and sub PCBs.
43. Recycled materials is expressed as a percentage of the total recycled plastic and metal over the total weight of the product.
44. Sold separately or as an optional feature.
45. Energy Consumption Meter requires Window 10 and registration for the Workforce Experience platform at <https://admin.hp.com>. Some features and capabilities may require additional purchase of HP services and/or commercial hardware capable of supporting the HP Insights agent for Windows, Mac, & Android. Activation and restrictions may apply. Select HP Workforce Solutions require an HP Insights agent for Windows, Mac, & Android, available for download at <https://admin.hp.com/software>. For full system requirements and services that require the agent, please visit <https://admin.hp.com/requirements>. The agent collects telemetry and analytics around devices and applications that integrate into the Workforce Experience platform and is not sold as a standalone service. Internet access with connection to the Workforce Experience platform is required. HP follows stringent GDPR privacy regulations, and the platform is ISO27001, ISO27701, ISO27017 and SOC2 Type2 certified for Information Security. Fleet management requires HP Proactive Insights.
46. Wolf Pro Security Edition: HP Wolf Pro Security Edition (including HP Sure Click Pro and HP Sure Sense Pro) is available preloaded on select SKUs and, depending on the HP product purchased, includes a paid 1-year or 3-year license. The HP Wolf Pro Security Edition software is licensed under the license terms of the HP Wolf Security Software - End User license Agreement (EULA) that can be found at https://support.hp.com/us-en/document/ish_3875769-3873014_16 as that EULA is modified by the following: "7. Term. Unless otherwise terminated earlier pursuant to the terms contained in this EULA, the license for the HP Wolf Pro Security Edition (HP Sure Sense Pro and HP Sure Click Pro) is effective upon activation and will continue for either a twelve (12) month or thirty-six (36) month license term ("Initial Term"). At the end of the Initial Term you may either (a) purchase a renewal license for the HP Wolf Pro Security Edition from HP.com, HP Sales or an HP Channel Partner, or (b) continue using the standard versions of HP Sure Click and HP Sure Sense at no additional cost with no future software updates or HP Support.
47. Sure Click Enterprise: HP Sure Click Enterprise is sold separately and requires Windows 10 or higher and Microsoft Internet Explorer, Google Chrome, Chromium or Firefox are supported. Supported attachments include Microsoft Office (Word, Excel, PowerPoint) and PDF files, when Microsoft Office or Adobe Acrobat are installed.
48. HP Tamper Lock must be enabled by the customer or your administrator.
49. Percentage of recycled fishing net plastic contained in each component varies by product. Recycled fishing net plastic is expressed as a percentage of the total weight plastic.
50. On some devices, Copilot+ PC experiences require free updates available starting later this year and continuing into 2025. Timing varies by device and region. See aka.ms/copilotpluspcs.

© Copyright 2025 HP Development Company, L.P. The information contained herein is subject to change without notice. The only warranties for HP products and services are set forth in the express warranty statements accompanying such products and services. Nothing herein should be construed as constituting an additional warranty. HP shall not be liable for technical or editorial errors or omissions contained herein.

Microsoft®, Windows® 11, and Windows® 11 Pro are registered trademarks or trademarks of Microsoft Corporation in the United States and/or other countries. Intel, Intel Core™, Intel vPro and Intel Optane are trademarks of Intel Corporation or its subsidiaries in the U.S. and/or other countries. Thunderbolt is a trademark of Intel Corporation or its subsidiaries in the U.S. and/or other countries. Bluetooth is a trademark owned by its proprietor and used by HP Inc. under license. USB Type-C® and USB-C® are registered trademarks of USB Implementers Forum. DisplayPort™ and the DisplayPort™ logo are trademarks owned by the Video Electronics Standards Association (VESA®) in the United States and other countries.

