

It is recommended that use the supplied components.



**+** Depending on country

[www.lg.com](http://www.lg.com)

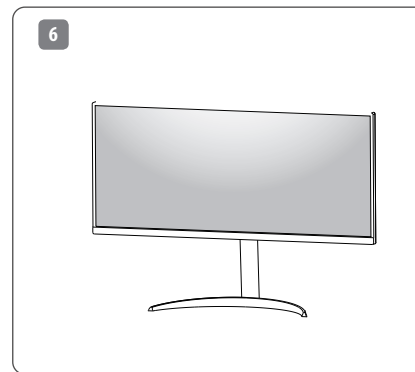
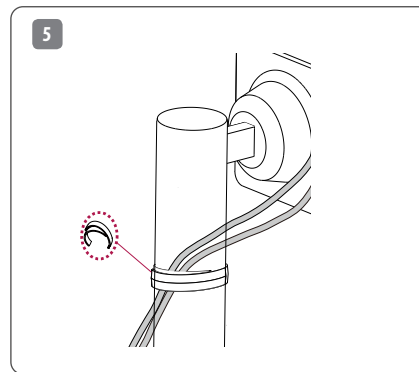
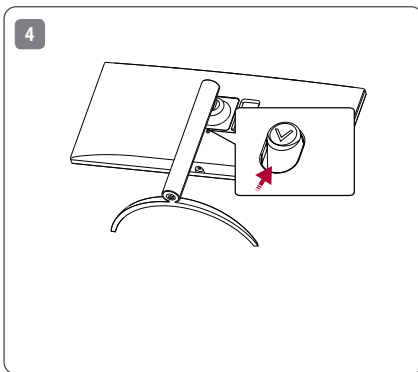
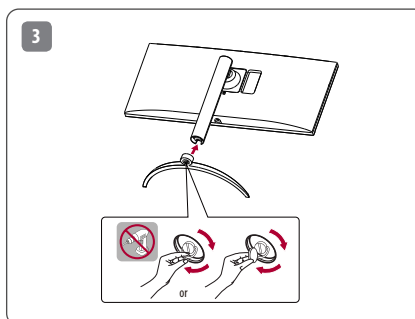
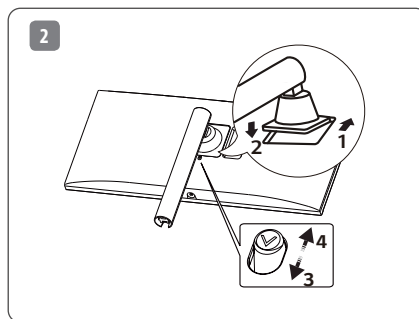
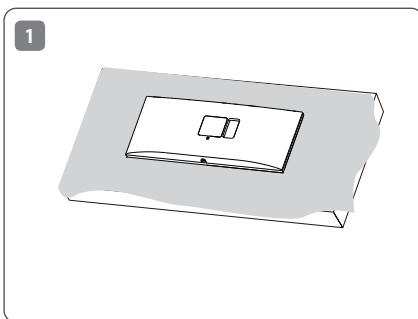
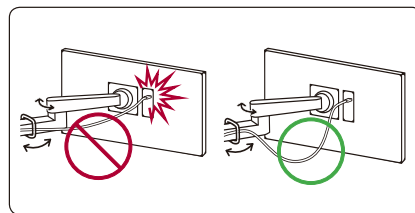
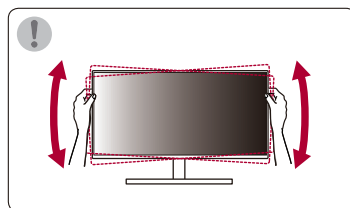
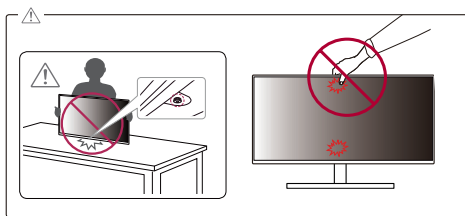


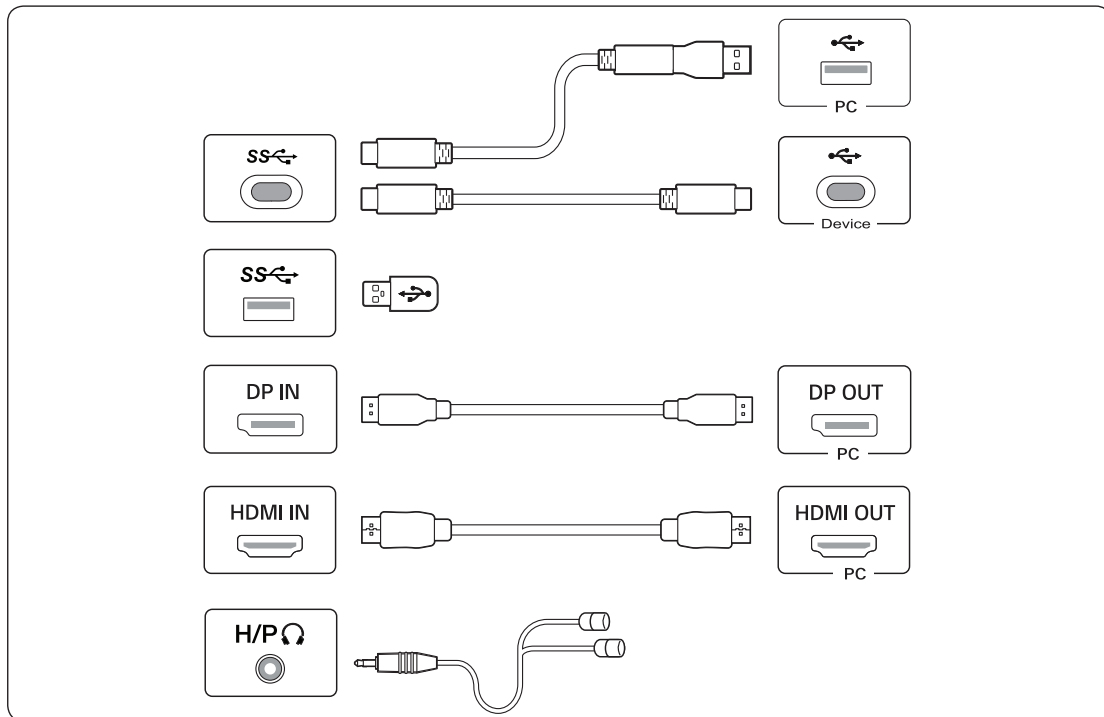
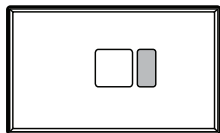
You can download manuals from the LGE website.  
OWNER'S MANUAL AND REGULATORY INFO. are available at <https://www.lg.com/au/support/manuals>.  
PLEASE READ SAFETY INFORMATION BEFORE INSTALLATION AND USE. SCAN QR CODE TO ACCESS.



\* M B M 6 5 3 4 9 8 2 4 \*

(2410-REV03)





- Using a DVI to HDMI / DP (DisplayPort) to HDMI cable may cause compatibility issues.
- The USB port on the product functions as a USB hub.
- Make sure to use the supplied cable. Otherwise, this may cause the device to malfunction.

