

SonicWall® TZ80

Quick Start Guide

For product information, go to SonicWall Technical Documentation for the TZ series.

Regulatory Model Number	Product Name
APL69-11B	TZ80



Copyright © 2024 SonicWall Inc. All rights reserved.

SonicWall is a trademark or registered trademark of SonicWall Inc. and/or its affiliates in the U.S.A. and/or other countries. All other trademarks and registered trademarks are property of their respective owners.

The information in this document is provided in connection with SonicWall Inc. and/or its affiliates' products. No license, express or implied, by estoppel or otherwise, to any intellectual property right is granted by this document or in connection with the sale of SonicWall products. EXCEPT AS SET FORTH IN THE TERMS AND CONDITIONS AS SPECIFIED IN THE LICENSE AGREEMENT FOR THIS PRODUCT, SONICWALL AND/OR ITS AFFILIATES ASSUME NO LIABILITY WHATSOEVER AND DISCLAIMS ANY EXPRESS, IMPLIED OR STATUTORY WARRANTY RELATING TO ITS PRODUCTS INCLUDING, BUT NOT LIMITED TO, THE IMPLIED WARRANTY OF MERCHANTABILITY, FITNESS FOR A PARTICULAR PURPOSE, OR NON-INFRINGEMENT. IN NO EVENT SHALL SONICWALL AND/OR ITS AFFILIATES BE LIABLE FOR ANY DIRECT, INDIRECT, CONSEQUENTIAL, PUNITIVE, SPECIAL OR INCIDENTAL DAMAGES (INCLUDING, WITHOUT LIMITATION, DAMAGES FOR LOSS OF PROFITS, BUSINESS INTERRUPTION OR LOSS OF INFORMATION) ARISING OUT OF THE USE OR INABILITY TO USE THIS DOCUMENT, EVEN IF SONICWALL AND/OR ITS AFFILIATES HAVE BEEN ADVISED OF THE POSSIBILITY OF SUCH DAMAGES. SonicWall and/or its affiliates make no representations or warranties with respect to the accuracy or completeness of the contents of this document and reserves the right to make changes to specifications and product descriptions at any time without notice. SonicWall Inc. and/or its affiliates do not make any commitment to update the information contained in this document.

Legend

- WARNING:** A WARNING icon indicates a potential for property damage, personal injury, or death.
- CAUTION:** A CAUTION icon indicates potential damage to hardware or loss of data if instructions are not followed.
- IMPORTANT, NOTE, TIP, MOBILE, OR VIDEO:** icon indicates supporting information.

To access the Support Portal, go to <https://www.sonicwall.com/support>.

SonicWall TZ80 Quick Start Guide
Updated - August 2024
232-006137-52 Rev A



Package Contents



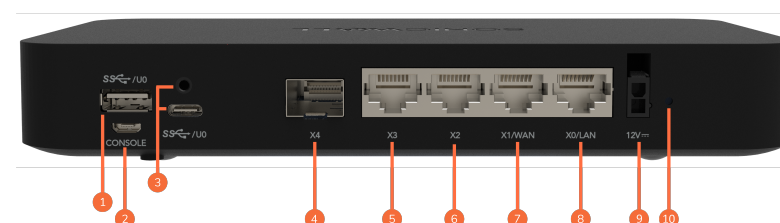
- 1 TZ80 Series appliance
- 2 12VDC/36W Power adapter
- 3 Power cord
- 4 Ethernet cable
- 5 Screws (2) M3 x 4mm
- 6 DIN bracket
- 7 SonicWall TZ80 Quick Start Guide
- 8 Safety, Regulatory and Legal Information document
- 9 Safety, Environmental, and Regulatory Information document

NOTE: The included power cord is approved for use only in specific countries or regions. Before using a power cord, verify that it is rated and approved for use in your location. The power cord is for AC mains installation only. Refer to the Series Safety, Regulatory, and Legal Information document for minimum power cord rating and additional safety information.

メモ: 添付の電源コードに関して電気安全を確保するために、弊社製品にご使用いただく電源コードは必ず製品同梱の電源コードをご使用ください。この電源コードは他の製品では使用できません。

Content missing? Contact SonicWall Technical Support at: <https://www.sonicwall.com/support/contact-support>

Back Panel



- 1 **SS³/U0** **U0 SS USB-A 3.0 Port:** For configuration, recovery, re-imaging, and WWAN.
- 2 **CONSOLE** **Micro-USB Console Port**
- 3 **SS³/U0** **U0 SS USB-C port with screw lock:** For configuration, recovery, re-imaging, and WWAN.
- 4 **X4** **X4 SFP Port:** 1 Gbps
- 5 **X3** **X3 RJ45 Port:** 1 Gbps
- 6 **X2** **X2 RJ45 Port:** 1 Gbps
- 7 **X1/WAN** **X1 WAN RJ45 Port:** 1 Gbps
- 8 **X0/LAN** **X0 LAN RJ45 Port:** 1 Gbps
- 9 **12V⁼⁼** **Power Input:** 36W 100~240VAC - 12VDC power adapter
- 10 **SafeMode** (located adjacent to power supply connector) **Pin-button** (Use a pin to press the button).*

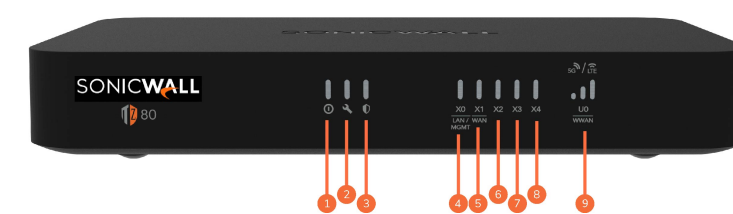
* Enter SafeMode or RECOVERY.

While the system is operational, press the SafeMode button. System gracefully reboots and enters SafeMode or RECOVERY.

While the system is powered down, press and hold the SafeMode button while connecting the power supply. Release the SafeMode button when you see the TEST/WRENCH LED blinking YELLOW three times to acknowledge the action.

NOTE: Only one USB port can be used at a time.

Front Panel

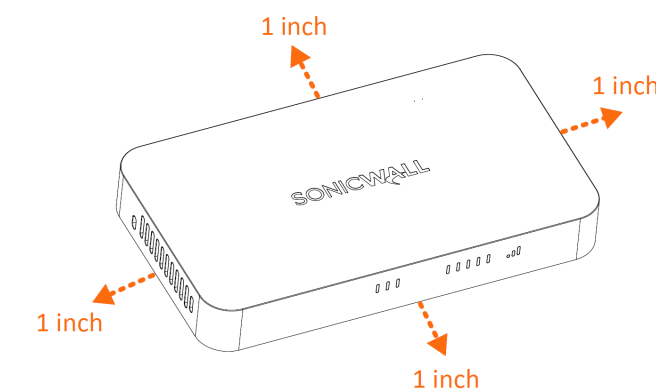


- 1 **Power LED:** Blue = Powered on
- 2 **Test LED:** Yellow = Initializing, blinking yellow = SafeMode
- 3 **Security LED:** Green = All security services licensed, blinking yellow = Security services license expired
- 4 **X0 LAN/MGMT X0 Port LED:** Solid green = link up, blinking green = link activity
- 5 **X1 WAN X1 Port LEDs:** Solid green = link up, blinking green = link activity
- 6 **X2 RJ45 Port LEDs:** Solid green = link up, blinking green = link activity
- 7 **X3 RJ45 Port LEDs:** Solid Green = link up, Blinking Green = link activity
- 8 **X4 SFP Port LEDs:** Solid Green = link up, Blinking Green = link activity
- 9 **U0 WWAN LEDs for USB 5G/LTE:** Green = 5G/LTE signal strength

Mounting Options

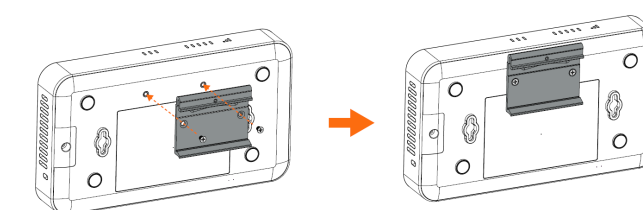
Flat Surface Option

Place the TZ80 on a flat surface. Allow unrestricted airflow around the unit, leaving at least one inch (25.44 mm) clearance on all sides.

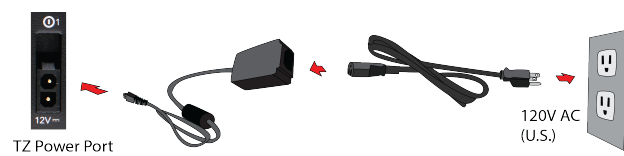


Alternate Mounting Option

Instead of using a rack mount tray to mount your TZ80 and power adapter in a standard 19-inch rack, you can mount a DIN bracket to the bottom of your TZ80 using the two M3*4mm screws provided and hang it from one of the rails in your rack.



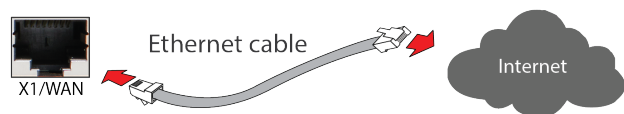
Connect Power



CAUTION: Only use the power adapter included with this device. Do not use a power adapter that is damaged or from another device.

Connect Interfaces

Connect the WAN interface (X1) on the back of the TZ80 to the Internet.



Setup and Registration

IMPORTANT: The TZ80 must be licensed before it can be configured or used.

IMPORTANT: The TZ80 must always be connected to the Internet. It cannot be used in a closed network environment.

SonicExpress App

Use SonicWall SonicExpress on your smart phone to register and configure your TZ80.

NOTE: After initial setup, be sure to download the latest firmware from MySonicWall and upgrade your TZ80.

1. Download and launch the SonicExpress App on your iOS or Android device.
2. Tap **Login** and log in with your MySonicWall credentials, then select the tenant for the . Tenants can contain multiple SonicWall appliances.
3. Connect your iOS or Android device to the TZ80 with your smartphone USB cable (not supplied with the TZ80).



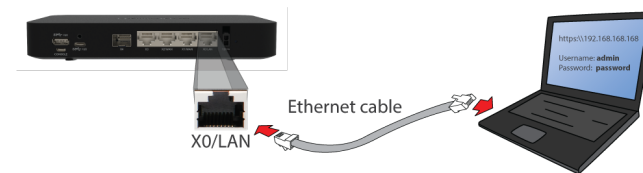
NOTE: Use your mobile device USB cable.

4. Use the SonicExpress **Setup Guide** to register the TZ80, synchronize service licenses, change the password, and configure essential interface settings.

Local Management

Set up and manage your TZ80 by connecting it to a management computer with an Ethernet cable.

To minimize scrolling, set your screen resolution to at least 1920 x 1080 pixels.



1. Connect the TZ80 LAN interface (X0) to your computer. Your computer should be configured to accept DHCP addressing.
2. Navigate to <https://192.168.168.168> in your web browser and log in with the default credentials:
 - Username: **admin**
 - Password: **password**
3. On successful login using the default password, you are then prompted to change the password.
NOTE: The default password must be changed at the time of your first log in and the new password to be used for future login attempts.
4. Launch the **Setup Guide** wizard or manually configure to complete initial configuration.
5. Using SonicOS, click **Register** and log in with your MySonicWall credentials to register your TZ80.

Your TZ80 is now initialized and ready for use!

Cloud Management

Use SonicWall Capture Security Center (CSC) with Zero Touch to manage and configure your TZ80.

NOTE: This option requires a Cloud Management license.

1. Log into CSC at cloud.sonicwall.com using your MySonicWall credentials.
2. Select the **MySonicWall** tile to register your TZ80.
3. Enable Zero Touch and NSM licensing on your TZ80 in MySonicWall.
4. Select the Network Security Manager tile in CSC to manage your TZ80 from the cloud.

