



ThinkPad P1 Gen 7



# Get started



\* Lenovo USB-C to VGA Adapter



\* Lenovo USB-C to DisplayPort Adapter

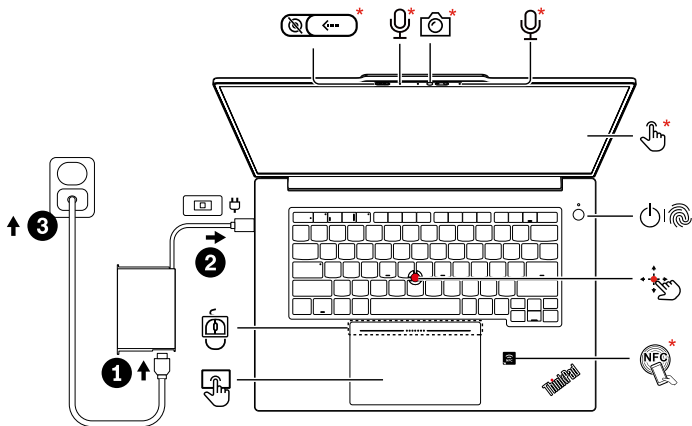


\* Lenovo HDMI to VGA Adapter

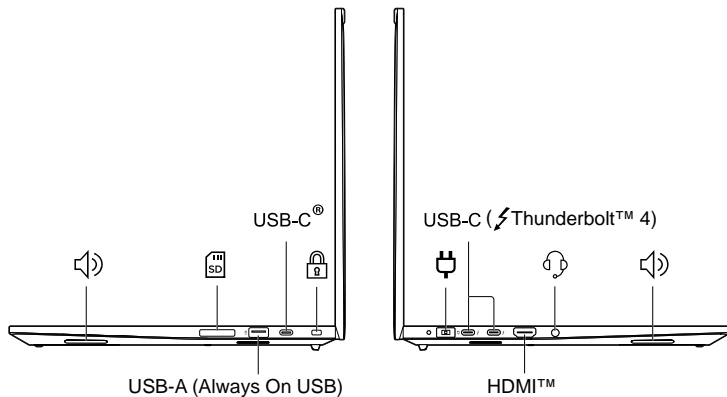


\* Lenovo USB-C to 2.5G Ethernet Adapter

\* For selected models

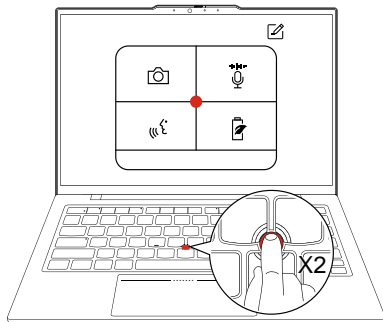


## Overview



Read the statement on USB transfer rate in the *User Guide*. To access the *User Guide*, refer to methods mentioned on the back cover.

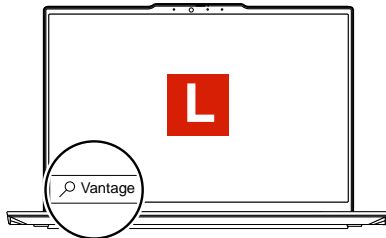
## TrackPoint Quick Menu



Launch TrackPoint Quick Menu by double tapping<sup>1</sup> for quick configuration of some device settings.

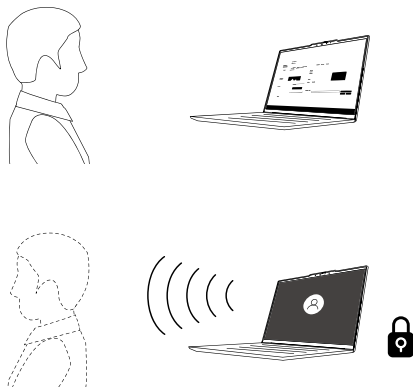
<sup>1</sup> It can be set to single tapping.

## Lenovo Commercial Vantage\*



Access Commercial Vantage to adjust device settings and check for system updates.

## Lock on leave<sup>2</sup>



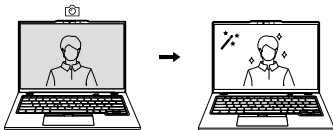
Protect your privacy and improve battery life.

<sup>2</sup> For infrared camera models only

# Lenovo View\*



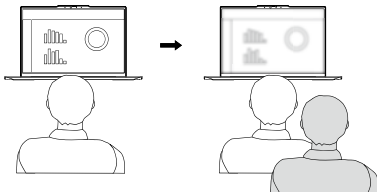
Video Enhancer



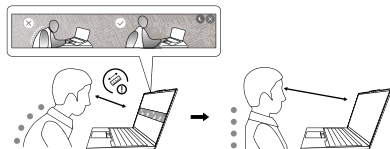
Background Removal\*



Privacy Guard



Posture Warning



[English]

## Specific absorption rate (SAR)

YOUR DEVICE MEETS INTERNATIONAL GUIDELINES FOR EXPOSURE TO RADIO WAVES.

Refer to the following for 10g SAR limit and maximum reported SAR values:

10g SAR limit: 2 W/kg (body-worn SAR); 4 W/kg (limb SAR)

Maximum SAR with 0 mm separation distance: 0.419 W/kg (body-worn SAR); 0.837 W/kg (limb SAR)

For more information about SAR, refer to the *Safety and Warranty Guide* that came with your device.

## European Union (EU) / United Kingdom (UK) — radio frequency and power

This radio equipment operates with the following frequency bands and maximum radio-

frequency power:

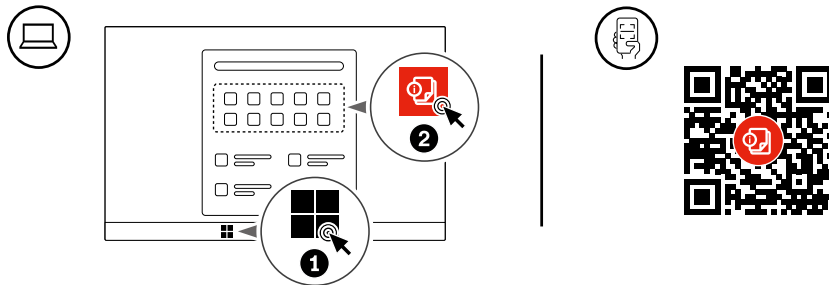
Technology	Frequency [MHz] / band	Maximum transmit power
WLAN 802.11b/g/n/ax/be Bluetooth BR/EDR/LE	2400 - 2483.5	< 20 dBm
WLAN 802.11a/n/ac/ax/be	5150 – 5350; 5470 - 5725	< 23 dBm
WLAN 802.11a/n/ac/ax/be	5725 - 5875	< 13.98 dBm
WLAN 802.11ax/be	5945 - 6425	< 22.9 dBm
NFC	13.56	< -5.31 dBμA/m@10m

Note: Not all wireless bands may be enabled depending on your product configuration. Usage of this device is limited to indoor locations in the bands 5150 - 5350 MHz and 5945 - 6425 MHz.





## Access User Guide



First Edition (May 2024)

© Copyright Lenovo 2024

**LIMITED AND RESTRICTED RIGHTS NOTICE:** If data or software is delivered pursuant to a General Services Administration "GSA" contract, use, reproduction, or disclosure is subject to restrictions set forth in Contract No. GS-35F-05925.

Lenovo, Lenovo logo, ThinkPad, and ThinkPad logo are trademarks of Lenovo. Thunderbolt is the trademark of Intel Corporation or its subsidiaries in the U.S. and/or other countries. The terms HDMI and HDMI High-Definition Multimedia Interface are trademarks or registered trademarks of HDMI Licensing LLC in the United States and other countries. USB-C® is a registered trademark of USB Implementers Forum. All other trademarks are the property of their respective owners.



Reduce  
Reuse  
Recycle

For FSC Mix logo only