

HP EliteBook 645 G11

Customize configurations to suit business needs.

Make the most of resources with the wide range of configurable features on the HP EliteBook 645.



Performance improvements

More vertical content in a surprisingly small footprint on the 16:10 ratio display that reduces the need to scroll. Enjoy port arrangements, including two USB-C® ports, in user friendly locations that allow for a thin chassis design.



Easy battery management

Manage and monitor your battery's performance and condition and customize charging options with the easy-to-use HP Power Manager dashboard.⁷

Commanding AMD processor²

Take on your work with the latest efficient and reliable AMD processor² that provides a highly responsive experience with connected modern standby.

HP Recommends Windows 11 Pro for business⁶

Work anywhere without compromising on performance with Windows 11⁶ and HP collaboration, security, and connectivity technology.

Make connections that matter

Let your audience see you clearly with a hybrid work-ready optional 5MP IR camera² with automatic framing.³ Enjoy crystal-clear audio from AI Noise Reduction⁷, and speakers tuned by Poly Studio.

Speed up the basics of IT management

Help speed up image creation and the management of hardware, BIOS, and security when managing devices through Microsoft Endpoint Manager with the HP Manageability Integration Kit.²³

Protected by HP Wolf Security

HP Wolf Security for Business creates a hardware-enforced, always-on, resilient defense. From the BIOS to the browser, above, in, and below the OS, these constantly evolving solutions help protect your PC from modern threats.⁷

Help protect our shared future.

This PC contains at least 30% post-consumer recycled plastic in the bezel, at least 50% post-consumer recycled plastic in the keycaps⁸ and provides power data tracking⁹ and suggestions to reduce energy use representing the latest in responsible design from HP.

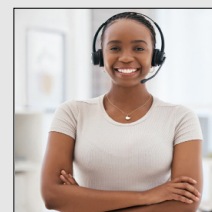


Microsoft Copilot key³⁰

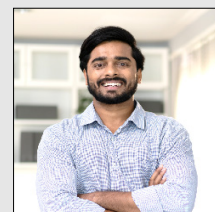
opens the prompt window so your AI assistant is at your fingertips.



Designed for



Support pros



Office collaborators

Recommended ecosystem¹⁰



Poly Blackwire 5220



HP Series 5 Pro - 527pm



Poly Studio P5 Webcam



HP USB-C G5 Dock



HP EliteBook 645 G11



Processor/Chipset	AMD Ryzen™ 7000 Series R3/R5/R7 non PRO and R3 Pro/R5 Pro/R7 Pro
Dimensions	318.6 mm x 224.4 mm x 10.9 mm (front) / 17.0 mm (rear) 12.54 in x 8.83 in x 0.43 in (front) / 0.67 in (rear) (Dimensions may vary by configuration)
Weight	Starting at 3.08 lbs/ 1.398 kg (weight may vary by configuration)
Display	14 inch diagonal WUXGA (1920 x 1200) Anti-Glare, UWVA , 300 nits (Touch Optional ¹); 14 inch diagonal WUXGA (1920 x 1200) Anti-Glare UWVA WLED+LBL sRGB NB2X 400 nits; 14 inch diagonal WUXGA (1920 x 1200) Anti-Glare UWVA WLED+LBL sRGB NB2Y 1000 nits, HP Sure View ¹² integrated privacy screen with HP Eye Ease.
Available Graphics	Integrated: AMD® UMA Graphics; No discrete option
Maximum Memory	Up to 64 GB DDR5-4800 SDRAM ¹³
Internal Storage	512 GB/1 TB/ 2 TB PCIe® Gen4x4 NVMe™ M.2 SSD TLC; 256 GB/512 GB PCIe® 2280 NVMe™ Value M.2 SSD 256 GB/512 GB/ 1 TB PCIe® Gen4x4 NVMe™ SED OPAL2 TLC; Optional 2nd SSD 256 GB PCIe® 2230 Gen3 NVMe™ Value M.2 SSD
Input Devices	Spill-resistant Keyboard; Non-Backlit/Non-DuraKey standard; Backlit/DuraKey option (no PS); Mylar Clickpad
Ports & Connectors	2x USB-A 3.2 Gen1 (1xcharging port, 1/side), 2 x USB4®, 1x RJ-45, 1x HDMI 2.1, 1x Combo Audio, Smart Card/NFC option, 1xnano SIM slot External
Communications	Realtek 8852CE Wi-Fi 6E ¹⁴ + Bluetooth® 5.3 wireless card M.2 2230 PCI-e+USB WW WLAN Mediatek RZ616 Wi-Fi 6E ¹⁴ + Bluetooth® 5.3 wireless card M.2 2230 AIM-T Optional HP 4000 4G LTE ¹⁵ Advanced Pro WWAN
Camera	FHD Camera / 5 MP camera + IR Camera
Audio	Audio by Poly Studio, dual stereo speakers, dual microphones enhanced by AI noise reduction ⁷
Battery Type	56Whr ¹⁶ Long Life Polymer Fast Charge 3 cell Battery ¹⁷
Power	AC Adapter 65 Watt nPFC Standard USB Type-C® Straight 1.8m
Security Management	Absolute persistence module; HP DriveLock and Automatic DriveLock; HP Secure Erase; HP Sure Click ¹⁸ ; HP Sure Sense ¹⁹ ; BIOS Update via Network; Optional Hardened Touch Fingerprint Sensor (FPS) ² ; HP Sure Admin ²⁰ ; HP BIOSphere; HP Client Security Manager ; TPM 2.0 embedded security chip (Common Criteria EAL4+ and FIPS 140-2 Level 2 Certified); HP Sure Start; HP Wake on WLAN; HP Tamper Lock ²¹ HP Sure Run; HP Sure Recover; Secured-Core PC Enable;
Management Features	HP Manageability Integration Kit ²³ ; HP Driver Packs; BIOS Config Utility (BCU); HP Client Catalog, HP Image Assistant; HP Connect for Microsoft Endpoint Manager
Software	HP Connection Optimizer; HP Hotkey Support; HP MAC Address Manager; HP Support Assistant; HP Power Manager ²⁴ ; MyHP; HP Privacy Settings; Touchpoint Customizer for Commercial; HP Notifications; HP PC Hardware Diagnostics Windows; Buy Office (Sold separately)
Sustainability	Recycled aluminum cover; Keycaps made from 85% post-consumer recycled plastics (DVDs) ²⁵ ; Speakerbox with ocean-bound plastic; Outer box packaging is 100% sustainably sourced ²⁶ ; Bulk packaging; EPEAT® Gold Registered in US ²⁷ ; ENERGY STAR® Certified; TCO Certified; GS Mark Certified; HP Planet Partners; HP Device Recovery ²⁹ ; Power Consumption Measurement ²⁸ .



HP EliteBook 645 G11

Footnotes

1. Actual brightness will be lower with touchscreen or HP Sure View.
2. Optional feature must be configured at time of purchase.
3. Automatic framing is a feature of Windows Studio and requires Windows 11 OS and a processor equipped with an NPU.4.
4. Sold separately or as an optional feature.
5. For storage drives, GB = 1 billion bytes. TB = 1 trillion bytes. Actual formatted capacity is less. Up to 30GB (for Windows) of disk is reserved for system recovery software.
6. Not all features are available in all editions or versions of Windows. Systems may require upgraded and/or separately purchased hardware, drivers, software or BIOS update to take full advantage of Windows functionality. Windows is automatically updated and enabled. High speed internet and Microsoft account required. ISP fees may apply and additional requirements may apply over time for updates. See <http://www.windows.com>.
7. Requires the myHP application and Windows OS
8. Recycled plastic content percentage is based on the definition set in the IEEE 1680.1-2018 standard.
9. Power data tracking expected in May 2023
10. Displays and peripherals sold separately.
11. Features and software that require an NPU may require software purchase, subscription or enablement by a software or platform provider, and third-party software may have specific configuration or compatibility requirements. Performance varies by use, configuration, and other factors.
12. HP Sure View Reflect integrated privacy screen is an optional feature that must be configured at purchase and is designed to function in landscape orientation.
13. For systems configured with more than 3 GB of memory and a 32-bit operating system, all memory may not be available due to system resource requirements. Addressing memory above 4 GB requires a 64-bit operating system. Memory modules support data transfer rates up to 2666 MT/s, 2933 MT/s or 3200 MT/s as depending on processor config; with 1 DIMM per channel. Additional DIMM loading on any channel may impact maximum memory speed. Actual data rate is determined by the system's configured ; See processor specifications for supported memory data rate.
14. Wi-Fi 6E requires a Wi-Fi 6E router, sold separately, to function in the 6GHz band. Availability of public wireless access points limited. Wi-Fi 6E is backwards compatible with prior 802.11 specs. And available in countries where Wi-Fi 6E is supported.
15. Gigabit class Category 16 4G LTE module is optional and must be configured at the factory. Module designed for up to 1 Gbps download speeds as carriers deploy 5 carrier aggregation and 100Mhz channel bandwidth, requires activation and separately purchased service contract. Backwards compatible to HSPA 3G technologies. Check with service provider for coverage and availability in your area. Connection, upload and download speeds will vary due to network, location, environment, network conditions, and other factors. 4G LTE not available on all products, in all regions.
16. Actual battery Watt-hours (Wh) will vary from design capacity. Battery capacity will naturally decrease with shelf life, time, usage, environment, temperature, system configuration, loaded apps, features, power management settings and other factors.
17. Recharges up to 50% within 30 minutes when the system is off or in standby mode when used with the power adapter provided with the notebook. Power adapter minimum of 65 watts required for battery capacities 56Whr or less. Power adapter minimum of 100 watts required for battery capacities greater than 56Whr and less than 83Whr. Power adapter minimum of 120 watts required for battery capacities greater than 83Whr and less than 100Whr. After charging has reached 90% capacity, charging speed will return to normal. Charging time may vary +/-10% due to System tolerance.
18. HP Sure Click requires Windows 10. See https://bit.ly/2PrLT6A_SureClick for complete details.
19. HP Sure Sense is available on select HP PCs and is not available with Windows10 Home.
20. HP Sure Admin requires Windows 10 and HP BIOS
21. HP Tamper Lock requires a supervisor password be established prior to use.
- 22.
23. HP Manageability Integration Kit can be downloaded from <http://www8.hp.com/us/en/ads/clientmanagement/overview.html>.
24. HP Power Manager requires Windows 10 and higher and can be downloaded from the Microsoft Store.
25. Percent of recycled material varies by product.
26. 100% outer box packaging made from sustainably sourced certified and recycled fibers. Fiber cushions made from 100% recycled wood fiber and organic material. Any plastic cushions are made from >90% recycled plastic.
27. Based on US EPEAT® registration according to IEEE 1680.1-2018 EPEAT®. EPEAT® status varies by country. Visit www.epeat.net for more information.
28. Power tracking data expected in May 2024. Energy Consumption Meter planned to be available to end-users within myHP. Fleet management requires HP Proactive Insights. Energy Consumption Meter requires Windows 10 or higher and registration for the Workforce Experience platform at <https://admin.hp.com>. Some features and capabilities may require additional purchase of HP services and/or commercial hardware capable of supporting the HP Insights agent for Windows, Mac, & Android. Activation and restrictions may apply. Select HP Workforce Solutions require an HP Insights agent for Windows, Mac, & Android, available for download at <https://admin.hp.com/software>. For full system requirements and services that require the agent, please visit <https://admin.hp.com/requirements>. The agent collects telemetry and analytics around devices and applications that integrate into the Workforce Experience platform and is not sold as a standalone service. Internet access with connection to the Workforce Experience platform is required. HP follows stringent GDPR privacy regulations, and the platform is ISO27001, ISO27701, ISO27017 and SOC2 Type2 certified for Information Security.
29. HP Device Recovery: HP Services are sold separately. HP Services are governed by the applicable HP terms and conditions of service provided or indicated to Customer at the time of purchase. Customer may have additional statutory rights according to applicable local laws, and such rights are not in any way affected by the HP terms and conditions of service or the HP Limited Warranty provided with your HP Product.
30. Requires Windows 11 and an NPU. Timing of feature delivery and availability varies by market and device. Requires Microsoft account to log in. Where Copilot in Windows is not available, the Copilot key will lead to the Bing search engine. See <http://aka.ms/WindowsAIFeatures>

© Copyright 2024 HP Development Company, L.P. The information contained herein is subject to change without notice. The only warranties for HP products and services are set forth in the express warranty statements accompanying such products and services. Nothing herein should be construed as constituting an additional warranty. HP shall not be liable for technical or editorial errors or omissions contained herein. Microsoft®, Windows® 11, and Windows® 11 Pro are registered trademarks or trademarks of Microsoft Corporation in the United States and/or other countries.

Advanced Micro Devices, AMD, the AMD and AMD Arrow logo, EPYC™, the EPYC logo, AMD Instinct, Infinity Fabric™, AMD Radeon™, ROCm™, the ROCm Logo and combinations thereof are trademarks of Advanced Micro Devices, Inc. Bluetooth is a trademark owned by its proprietor and used by HP Inc. under license. USB Type-C® and USB-C® are registered trademarks of USB Implementers Forum. DisplayPort™ and the DisplayPort™ logo are trademarks owned by the Video Electronics Standards Association (VESA®) in the United States and other countries. Members of Wi-Fi Alliance® are bound to follow the requirements of the Brand Style guide pursuant to the Certification Mark License Agreement. Please contact brandusage@wi-fi.org if you have any questions about Wi-Fi Alliance mark usage requirements.

