



Recycle Disassemble Instruction (Dismantled Information)

Requirements according to ANNEX VII of DIRECTIVE 2012/19/EU
on waste electrical and electronic equipment (WEEE)

Materials and components with hazardous content

LCDs may contain hazardous substances like Pb and BFRs which are covered by exemptions under the RoHS directive. However, the majority is present in the printed circuit boards assembly. In order to reduce emissions as much as possible, a complete disposal of the old appliance is required. This treatment may only be performed in authorized handling plants.








Product Name: LCD Monitor

Model No.: BL2790,BL2790T,GW2790,GW2790E,GW2790T





1. Disassembly Tools

Tool	picture
Philips Screwdriver for M3 Screw	
Nosed Pliers	
Diagonal Cutting Pliers	
Slotted screwdriver	
Six Point Sockets	
Philips Screwdriver for M2.5 Screw	
Knife	



2.Product exploded view

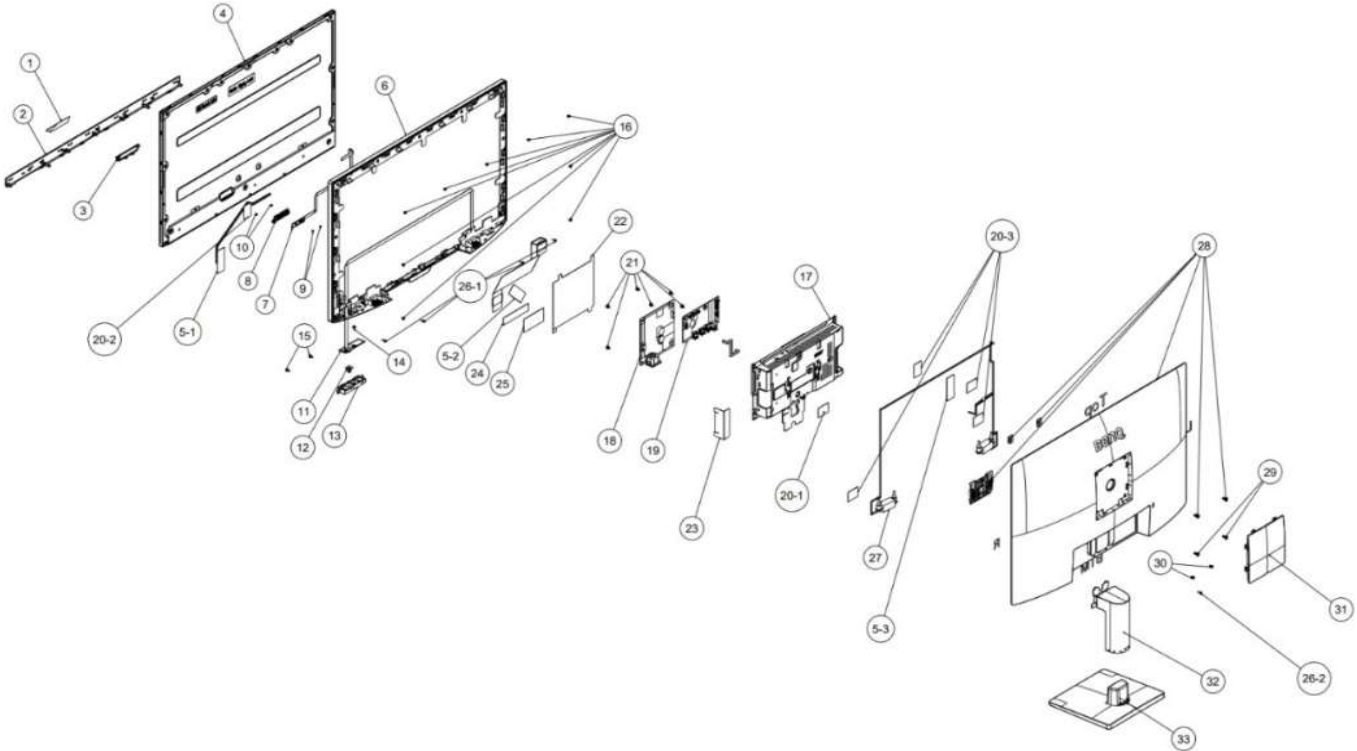
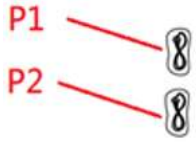


Table 1 Disassembly parts list

Item	Description	Item	Description
1	FILM PROTE ALS	21	#SCRW M PH INT/TOO M3*9L ZN
2	DECO ABS GA85 DBB0A	22	MYLAR SAFETY 143*143
3	LENS AMB PC	23	MYLAR SAFETY CONN 74*48
4	PANEL	24	#TAPE KAPTON 0.05*19*33M
5	#TAPE ADHESIVE 60*25*0.2T BLK	25	#TAPE CONDUCT 70*35*0.1 2010I
6	MF ABS GA85 DBB0A	26	#SCRW TP-P FPH M3*8(5/1.2)BZN
7	PCBA SENSOR BD MI	27	#SPK 2.5W 4OHM 940/310MM
8	HOLDER AMB ABS GA85	28	ASSY RC ABS GA85 DBB0A
9	#SCRW TP-B FPH M2*2.4L ZN	29	#SCRW MACH BH M4*10L B-ZN NYL
10	#SCRW TP-B FPH M2*4L B-ZN	30	#SCRW MACH FLAT M4*7L B-ZN NYL
11	PCBA CTRL BD MI	31	CVR VESA ABS GA85 DBB0A
12	BTN-5D ABS GA85 DBB0A	32	ASSY CLMN GA85 DBB0A
13	BTN OSD+PWR ABS GA85	33	ASSY BASE GA85 DBB0A
14	SCRW TAP CAP M3*6L B-ZN		
15	SCRW TAP PH W/FL M2.5*6L W-ZN		
16	#SCRW MACH FLATM3*0.5P*4.5L ZN		
17	ASSY SHD SECC TUV MAIN		
18	PCBA SPS BD MI		
19	PCBA IF BD MI		
20	#TAPE ADHESIVE 35*25 BLK 7651F		



3.External cable



External cable			
Item	Description	Qty	Unit
P1	Power cable	1	PCS
P2	HDMI cable	1	PCS



4.Product Disassembly

1. Remove ASSY Stand

1.1 Remove base by pushing release button.

1.2 Remove Base from ASSY Stand by hand.



2. Remove ASSY Rear Cover

2.1 Remove Vesa CVR by Slotted screwdriver.

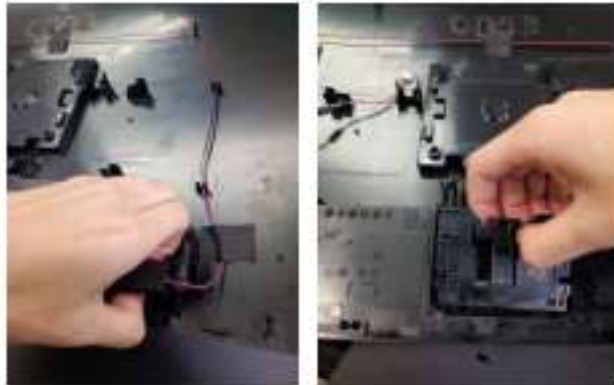
2.2 Remove screws x7 by Screwdriver .



2.3 Remove Assy RC by hand

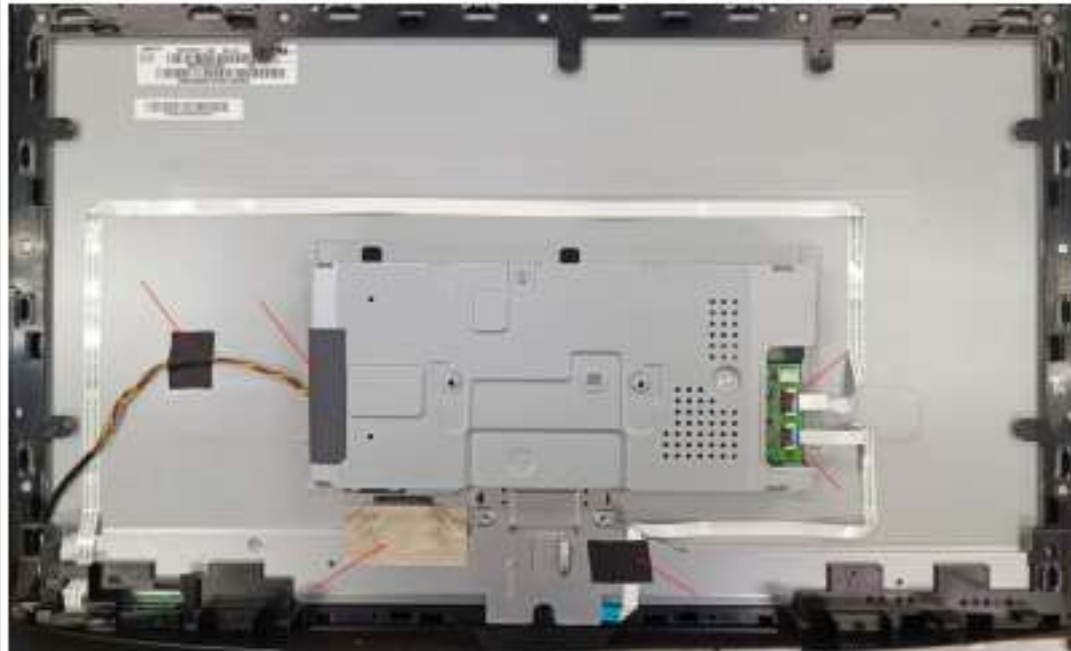


2.4 Remove SPK and release Button by hand



3. Remove SHD and PCB.

3.1 Remove acid tape and lamp wire and connector.



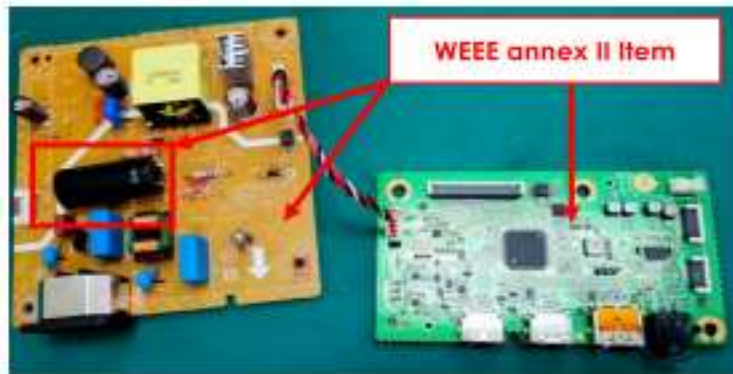
3.2 Remove Safety Mylar.



3.3 Then, remove screw by screwdriver.

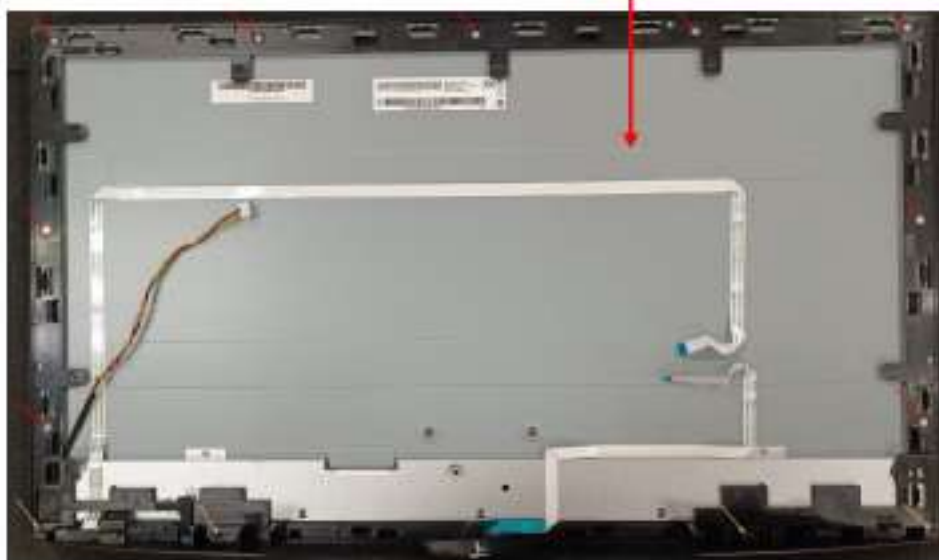


3.3 Remove wire by hand.



4. Remove MF, Deco from PANEL

4.1 Remove MF, Deco by screwdriver.

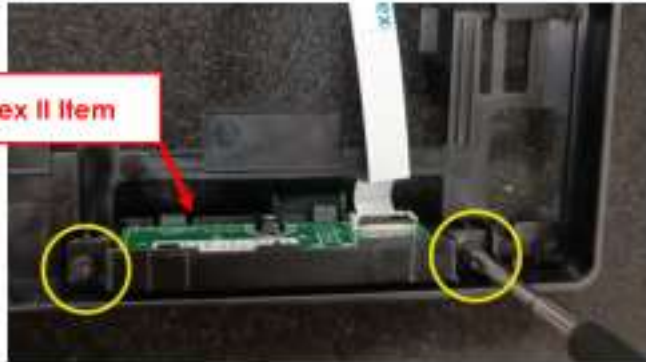


4.2 Remove sensor holder , sensor PCB by screwdriver.



4.3 Remove OSD Button , CTRL BD, 5D button by screwdriver and hand.

WEEE annex II Item





5. Recycle characteristics

Recycle characteristics Part	No.
Reuse	-
Recycle	1,2,3,5,6,8,9,10,12,13,14,15,16,17,20,21,22,23, 24,25,26,27,28,29,30,31,32,33
WEEE annex VII	4,7,11,18,19, P1~P2
Recovery	-
Disposal	-

6. Disassembly Time

Total time: 30 minutes