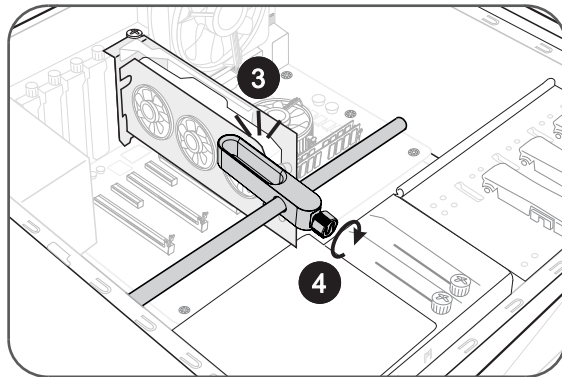
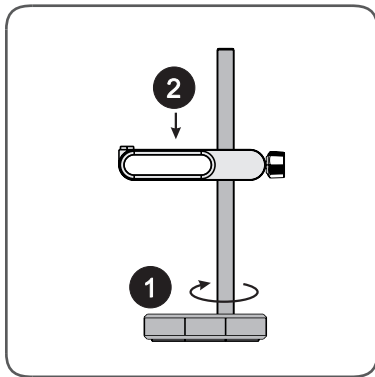
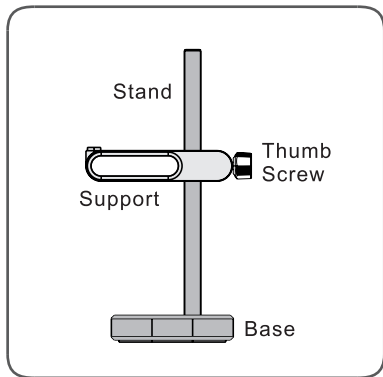


## GRAPHICS CARD STAND INSTALLATION GUIDE

1. Screw the stand into the base.
2. Slide the support onto the stand.
3. Position the support to touch the graphics card slightly. (Make sure it does not touch the fan.)
4. Secure the support in place with the thumb screw.



NOTE: To avoid potential damage, please do not use the Graphics Card Stand when transporting your system.