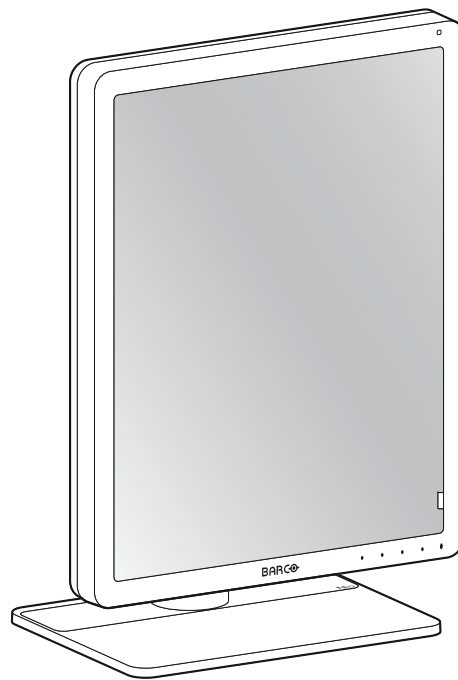


Nio LED Display



WEEE Recycling Passport

MDNC-3321, MDNC-3421, MDNG-3421, MDNC-6121, MDNG-6221

Barco NV
Beneluxpark 21, 8500 Kortrijk, Belgium
www.barco.com/en/support
www.barco.com

WEEE Recycling Passport for Nio LED Display

1

About this document

The Barco Recycling Passport has the aim of providing information to treatment facilities about the different components and materials that are present in the product, according to the Directive 2012/19/EU on waste electrical and electronic equipment (WEEE).

This document has also the objective to indicate the location of possible dangerous preparations and substances within the EEE. This document applies to Barco products only and it is not intended to be used as a disassembly instruction.

Original Equipment Manufacturer (OEM) products are identified where applicable. If you need more information about the OEM products included in this document, please contact directly the OEM for selective treatment information.

1.1 Product Identification

General Information

| | |
|------------------------|-----------------|
| WEEE Category: | Medical devices |
| Producer: | Barco NV. |
| Product Family: | Displays |

Covered Products

Nio LED Display (MDNC-3321, MDNC-3421, MDNG-3421, MDNC-6121, MDNG-6221)

1.2 Reportable Materials

Materials

This product is compliant with Directive 2011/65/EU on the restriction of the use of certain hazardous substances in electrical and electronic equipment (RoHS Directive). For information regarding the materials contained in this product, please contact our Environmental Compliance Office at green.compliance@barco.com.

WEEE Selective Treatment

The table below lists the WEEE selective treatment categories. Each reference number used in this document refers to this table.

| WEEE selective treatment category | Types / Materials Substances | Quantity of items included in the product |
|--|---|--|
| 1 | Capacitors containing Polychlorinated biphenyls (PCB) or Polychlorinated terphenyls (PCY/PCT) | |
| 2 | Components containing Mercury - e.g. switches, circuit breakers, lamps | (*) |
| 3 | Batteries | |
| 4 | Printed Circuit Boards - Area greater than 10 square centimeters | 3 |
| 5 | Toner cartridges from printers | |
| 6 | Plastic containing brominated flame retardants | (*) |
| 7 | Components containing Asbestos | |
| 8 | Cathode Ray Tubes | |
| 9 | Refrigerants - Chlorofluorocarbons (CFC), Hydrochlorofluorocarbons (HCFC) or hydrofluorocarbons (HFC), and hydrocarbons (HC) | |
| 10 | Gas discharge lamps | |
| 11 | Liquid crystal displays (together with their casing where appropriate) of a surface area greater than 100 square centimeters and all back-lighted with gas discharge lamps | |
| 12 | External electrical cables | 7 |
| 13 | Components containing refractory ceramic fibers | |
| 14 | Components containing radioactive substances | |
| 15 | Electrolyte capacitors containing substances of concern — greater than 25 mm diameter or height or similar volume | |
| 16 | Lead | (*) |
| 17 | Cadmium | (*) |

| WEEE selective treatment category | Types / Materials Substances | Quantity of items included in the product |
|-----------------------------------|------------------------------|---|
| 18 | Fluids | |
| 19 | Hexavalent Chromium | |

(*) Quantities in compliance with RoHS 2011/65/EU

1.3 Location of Reportable Materials



Each of the concerning modules of the device is indicated with the appropriate WEEE selective treatment category in the illustrations of this section.

Part location



Image 1-1

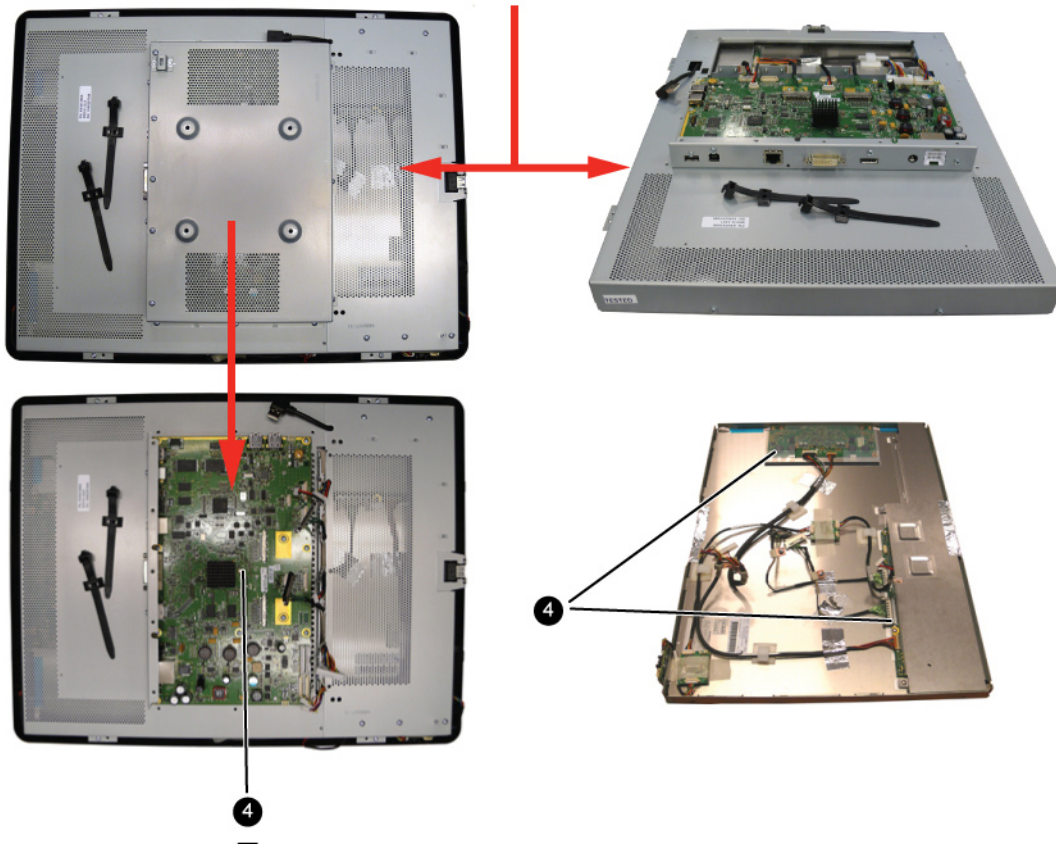


Image 1-2

