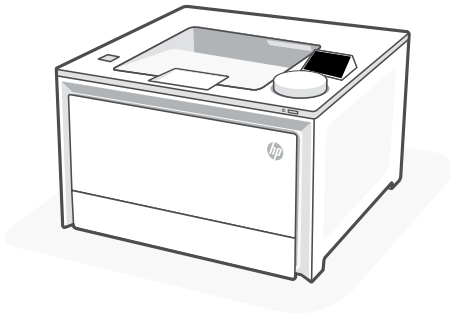




# Setup Guide

---

设置指南



**HP Color LaserJet Pro**  
4203cdn

1

## Setup overview

EN

### Prepare printer

#### Choose setup option

##### Option 1: Basic setup

Use for basic printing without Internet

- USB
- Ethernet for network capability

OR

##### Option 2: Full-feature setup

Get advanced cloud management features with HP Smart Admin.

## 设置概述

ZHCN

### 准备打印机

#### 选择设置选项

##### 选项 1：基本设置

在未连接至 Internet 的情况下使用基本的打印功能

- USB
- 通过以太网使用网络功能

或

##### 选项 2：完整功能设置

通过 HP Smart Admin 使用高级云管理功能。

### Get help with setup

Find setup information and videos online.



[hp.com/support/colorlj4201-4203](https://hp.com/support/colorlj4201-4203)



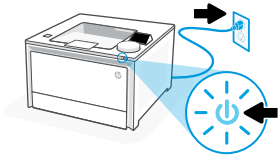
### 获取有关设置的帮助

在线查找设置信息和视频。

1

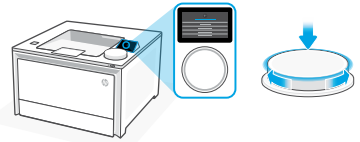
EN

Plug in and power on. On the control panel, choose your language and country/region by turning the dial. Press dial down to select.

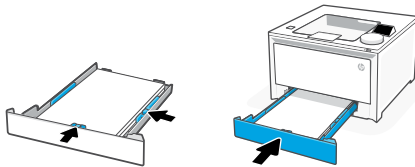
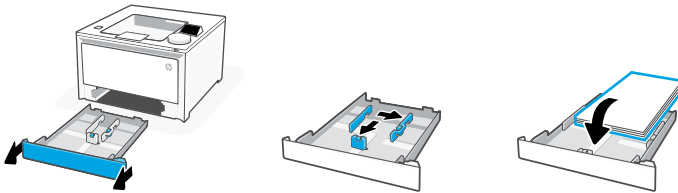


ZHCN

插上电源并开机。在控制面板上，通过转动表盘选择您的语言和国家/地区。按下表盘进行选择。



2



EN

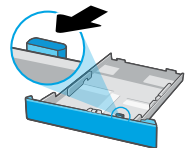
Load paper and adjust the guides.

**Note:** If loading legal paper, squeeze the side latch at the front of the tray and pull forward. When inserted, the tray will extend from the front of the printer approximately 2 inches (50.8 mm).

ZHCN

装入纸张并调整导轨。

**注意：**如果装入 Legal 纸张，请捏紧纸盒正面的侧面卡销并向前拉动。插入后，纸盒将从打印机的正面伸出大约 2 英寸（50.8 毫米）。

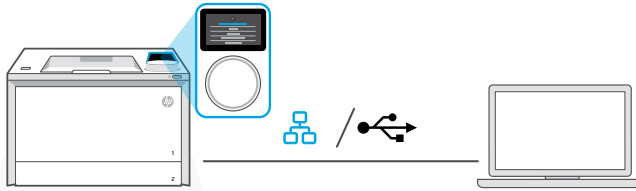


**EN** **OPTION 1: Basic setup**

Choose Basic setup for printing on a local network or USB connection.

**ZHCN** **选项 1：基本设置**

选择基本设置，即可在本地网络上打印或使用 USB 连接进行打印。



- EN** 1. On the control panel, choose your connection method:


**Ethernet** 

- i. Connect an Ethernet cable from the printer to the same network as the computer.
- ii. Press “Continue” on the control panel to confirm the IP address. Then continue with the steps on the control panel until you reach the home screen.

**USB** 

- i. Connect the USB cable to the port on the back of the printer and to the computer.
  - ii. Continue with the steps on the control panel until you reach the home screen.
2. Install printer software.
- i. Go to [hpsmart.com/download](https://hpsmart.com/download) to download the HP software and print drivers.
  - ii. Install the software and complete setup.

- ZHCN** 1. 在控制面板上，选择连接方法：


**以太网** 

- i. 使用以太网连接线将打印机连接到计算机所在的网络。
- ii. 按控制面板上的“继续”确认 IP 地址。然后继续执行控制面板上的步骤，直到进入主屏幕。

**USB** 


- i. 将 USB 连接线的两端分别连接到打印机背面的端口和计算机。
  - ii. 继续执行控制面板上的步骤，直到进入主屏幕。
2. 安装打印机软件。
- i. 访问 [hpsmart.com/download](https://hpsmart.com/download) 下载 HP 软件和打印机驱动程序。
  - ii. 安装软件并完成设置。

 **Setup Complete for Option 1**

 **选项 1 设置完成**


**EN** **OPTION 2: Full-feature setup**

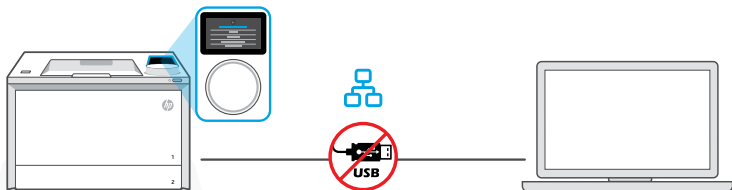
Provides cloud-based tools to manage the printer in a multi-user, multi-printer environment.

 Do not use USB cable. The printer must be on a network with access to the Internet.

**ZHCN** **选项 2：完整功能设置**

提供基于云的工具，可用于管理多用户、多打印机环境中的打印机。

 不使用 USB 连接线。打印机必须连接至可以访问 Internet 的网络。



## 1 Connect printer to network

## 将打印机连接到网络

- EN**
1. Connect an Ethernet cable from the printer to the same network as the computer.
  2. Go to [hpsmart.com/setup](https://hpsmart.com/setup) on a computer to install HP Easy Start software.
  3. Follow the steps in the software to add the printer to your network.
  4. Choose the option for full-feature setup and to generate a pairing code.

- ZHCN**
1. 使用以太网连接线将打印机连接到计算机所在的网络。
  2. 在计算机上访问 [hpsmart.com/setup](https://hpsmart.com/setup) 以安装 HP Easy Start 软件。
  3. 按照软件中的步骤，将打印机添加到网络。
  4. 选择完整功能设置选项，并生成配对代码。

## 2 Pair printer to HP Smart Admin

## 将打印机与 HP Smart Admin 配对



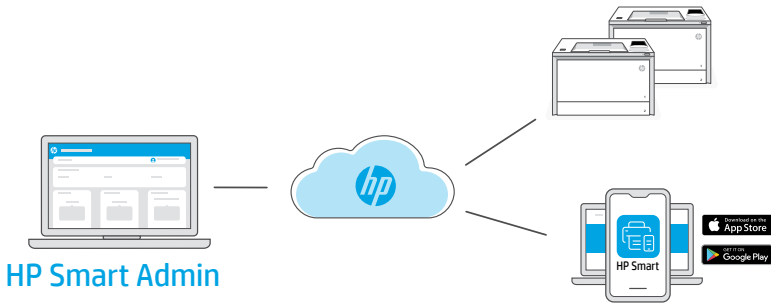
[hpsmart.com/connect](https://hpsmart.com/connect)

- EN**
1. Record the pairing code that displays on the control panel. The pairing code will expire after a limited time. If code expires, generate a new code in HP Easy Start.
  2. Continue with HP Smart Admin setup. If the admin setup window is not open, go to [hpsmart.com/connect](https://hpsmart.com/connect). After creating or signing in to an HP account, you will:
    - Choose to set up the printer for a company/organization or for personal use.
    - Enter the pairing code to link the printer to your HP account.
    - Sign up for Instant Ink for hassle-free, toner delivery service (optional).
    - Install print drivers and print a test page.

- ZHCN**
1. 记录控制面板上显示的配对代码。配对代码将在有限时间后过期。如果代码过期，请在 HP Easy Start 中生成新的代码。
  2. 继续进行 HP Smart Admin 设置。如果管理员设置窗口未打开，请访问 [hpsmart.com/connect](https://hpsmart.com/connect) 创建或登录 HP 帐户后，您将能：
    - 选择打印机设置方式：是供公司/组织使用，还是供个人使用。
    - 输入配对代码，将打印机关联到您的 HP 帐户
    - 注册 Instant Ink 即可享受便捷的碳粉配送服务（可选）。
    - 安装打印驱动程序并打印测试页。

### 3 Manage printer with HP Smart Admin

### 利用 HP Smart Admin 管理打印机



EN

After completing initial setup, manage the printer from a cloud-connected dashboard.



The dashboard URL differs based on how the printer was configured during setup:

#### Personal use: [hpsmart.com](https://hpsmart.com)

- Monitor printer status and supplies
- Share printer with friends and family
- Enable mobile printing (requires HP Smart)
- View warranty status

#### Company/organization use: [hpsmart.com/admin](https://hpsmart.com/admin)

- Manage the printer, toner, users, and more
- Enable mobile printing (requires HP Smart)
- Keep your printing private with Private Pickup

ZHCN

完成初始设置后，可从云连接仪表板管理打印机。



根据打印机在设置期间的配置方式，仪表板 URL 会有所不同：

#### 个人使用：[hpsmart.com](https://hpsmart.com)

- 监控打印机状态和耗材
- 与朋友和家人共享打印机
- 启用移动打印（需要 HP Smart）
- 查看保修状态

#### 公司/组织使用：[hpsmart.com/admin](https://hpsmart.com/admin)

- 管理打印机、碳粉、用户等
- 启用移动打印（需要 HP Smart）
- 利用私人取件功能确保打印的私密性



---

© Copyright 2023 HP Development Company, L.P.

The Apple logo is a trademark of Apple Inc., registered in the U.S. and other countries.

App Store is a service mark of Apple Inc.

Android, Google Play, and the Google Play logo are trademarks of Google Inc.

Printed in xxxxx

Printed in xxxxx

**EN**

**ZHCN**



**5HH53-90009**