



PMR & Critical Communications

PRODUCT CATALOGUE

Almost 75 Years of Experience

Panorama Antennas is a privately owned family business, now in its third generation, and leading designer and manufacturer of antennas for wireless communication. Established in London in 1947, Panorama started life as a manufacturer of consumer products and buoyed by huge demand in 1952, began manufacturing TV components and antennas. With the transistor radio trend of the 1960s, Panorama's expert knowledge swiftly led the company into the manufacturing of communication antennas.

Throughout the 1970s and 80s, Panorama evolved to become the first specialised communication antenna manufacturer in the UK, developing a range of cellular antennas to coincide with the launch of the mobile phone network in Britain. 1990 was a year of huge change as Panorama found itself revolutionising cellular glass mount antenna technology, filing a patent application for the first ever solid state coupling circuit. Through creating a new benchmark for quality in the production of components and leading technology development, Panorama has grown side by side with the cellular telecommunications industry.

Today Panorama produces antennas for the world's leading communication companies and has grown to include over 100 staff in 5 international sales offices, as well as operating 4 fully owned subsidiaries. Manufacturing, design and development remain located in London less than a mile from the original factory. Our network of international sales representatives means that all customers get the attention and advice they require, providing local support on a global scale.

Antennas for Next Generation

Panorama's constant cutting-edge research ensures that our antennas meet the demands of the very latest technology. With almost 75 years' experience in delivering world-class antenna products, Panorama's current product range reflects our unparalleled expertise in providing high-quality performance antennas.



Certificate Number:
10216908



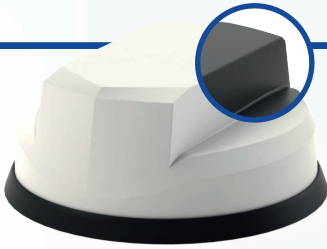
Certificate Number:
0315 662833



Certificate Number:
1345 662834



**IP69K
RATED**



Great White® 5G MiMo Antenna

FEATURES

2x2 MiMo 5G/4G LTE
617-960 / 1710-6000MHz
Optional Integrated GPS/GNSS
Up to 6x6 MiMo WiFi 2.4/5.0GHz
ECE 118.03 Compliant Cables
IK10 Rated

The LPMM/LGMM range provides effective 2x2 MiMo LTE operation with excellent isolation and low correlation coefficient. Available in Black or White. Optional GPS/GNSS module incorporates advanced filtering.

Part no.	MiMo LTE	GPS/ GNSS	MiMo WiFi
LPMM-6-60	2x2		
LGMM-6-60	2x2	●	
LGMDM-6-60-24-58	2x2	●	2x2
LGMTM-6-60-24-58	2x2	●	3x3
LGMQM-6-60-24-58	2x2	●	4x4
LGMHM-6-60-24-58	2x2	●	6x6

*Part numbers refer to the white version only

** Part number represents antenna only. Please contact your local sales representative for kit part numbers with full cable assemblies supplied

Multifunction Antenna

MAKO® 5G MiMo Antenna

FEATURES

4x4 MiMo 5G/4G LTE
617-960 / 1710-6000MHz
Optional Integrated GPS/GNSS
Up to 6x6 MiMo WiFi 2.4/5.0GHz
ECE 118.03 Compliant Cables
IK10 Rated

The LPMM4/LGMM4 enables multiple antenna functions to be fitted using a single hole mount. Designed for use with Advance Pro routers that require a 4x4 5G/4G LTE MiMo antenna system. Available in Black or White. Optional GPS/GNSS module incorporates advanced filtering.

**IP69K
RATED**



Part no.	MiMo LTE	GPS/ GNSS	MiMo WiFi
LPMM4-6-60	4x4		
LGMM4-6-60	4x4	●	
LGMDM4-6-60-24-58	4x4	●	2x2
LGMTM4-6-60-24-58	4x4	●	3x3
LGMQM4-6-60-24-58	4x4	●	4x4
LGMHM4-6-60-24-58	4x4	●	6x6

*Part numbers refer to the white version only

** Part number represents antenna only. Please contact your local sales representative for kit part numbers with full cable assemblies supplied

Multifunction Antenna



**IP69K
RATED**

4G/5G MiMo Sharkee® 5G

FEATURES

2x2 MiMo 5G/4G LTE
617-960 / 1710-6000MHz
Optional Integrated GPS/GNSS
Up to 4x4 MiMo WiFi 2.4/5GHz
ECE 118.03 Compliant Cables

The SHKG Sharkee® range has become a byword for industry leading technology in a discrete OEM sharkfin housing. The 6-60 brings 5G capability to the Sharkee® family.

Part no.	MiMo LTE	GPS/ GNSS	MiMo WiFi	External Whip
GPSD-6-60	2x2	•		•
GPSD-6-60-DW	2x2	•	2x2	•
GPSD-6-60-TW	2x2	•	3x3	•
GPSD-6-60-QW	2x2	•	4x4	•
SHKG-6-60	2x2	•		
SHKG-6-60-DW	2x2	•	2x2	
SHKG-6-60-TW	2x2	•	3x3	
SHKG-6-60-QW	2x2	•	4x4	

*Part numbers refer to the black version only
** Antenna kit supplied with 5m / 17ft of cable assembly with SMA male (cellular & GNSS) and reverse polarity SMA male (WiFi).
***Other lengths cables and connectors available upon request.

Multifunction Antenna

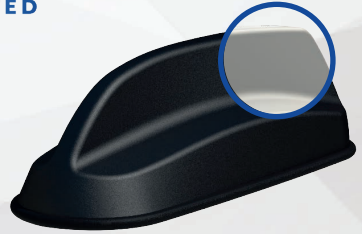
SHK MiMo Sharkee®

FEATURES

2x2 MiMo 5G/4G/3G/2G LTE
Optional 2x2 or 3x3 MiMo WiFi
Optional Integrated GPS/GNSS
Available in Black or White

The SHK range provides multiple functions in a single hole mounting, reducing vehicle damage, install time and visual impact. The SHK has OEM sharkfin styling and allows fast installation of multiple antennas. Available in Black or White.

**IP66
RATED**



Part no.	MiMo LTE	GPS/ GNSS	MiMo WiFi
SHK-7-27	2x2		
SHKG-7-27	2x2	•	
SHKG-7-27-24-58	2x2	•	2x2
SHKG-7-27-T24-58	2x2	•	3x3

*Part numbers refer to the black version only
** Antenna kit supplied with 5m / 17ft of cable assembly with SMA male (cellular & GNSS) and reverse polarity SMA male (WiFi).
***Other lengths cables and connectors available upon request.

Multifunction Antenna

GPSD MiMo Sharkee®

FEATURES

- 2x2 MiMo 5G/4G/3G/2G LTE
- Integrated GPS/GNSS
- Optional 2x2 MiMo WiFi 2.4/5.0GHz

The GPSD range has a sharkfin housing with a built in whip mounting boss and can support a range of Panorama Antennas' VHF/ UHF whips.

Requiring only a single hole fixing, the GPSD reduces vehicle damage, visual impact and cost of installation, whilst protecting vehicle resale value.



**IP66
RATED**

Part no.	MiMo LTE	GPS/ GNSS	MiMo WiFi
GPSD-7-27	2x2		
GPSD-7-27-24-58	2x2	•	2x2

Multifunction Antenna

**IP66
RATED**



GPSB Sharkee®

FEATURES

- 4G/3G/2G LTE
- Dualband 2.4/4.9-6GHz WiFi
- Integrated GPS/GNSS
- Optional antenna whip

The GPSB 'Sharkee' is an automotive multi-function antenna, which has a mounting stud for a whip antenna. A wide range of whips (single, dual or tri-band) are available for VHF/UHF and 700/800MHz band operation.

The GPSB reduces visual impact and only requires a single 19mm (3/4") hole, which results in reduced installation time/cost whilst helping to maintain vehicle resale value.

Part no.	LTE	GPS/ GNSS	WiFi
GPSB	•	•	•

Multifunction Antenna

**IP65
RATED**



GPS/GNSS & Whip Combination

FEATURES

- Flexible UHF, cellular or WiFi whip
- Integrated GPS/GNSS
- Single 15mm hole mount
- Whip mounting stud

The GPSK antenna is a rugged combination base with a whip mounting stud. A wide range of antenna whips are available to fit the GPSK, including UHF, Cellular and WiFi types.

The GPSK is an ideal solution for vehicle mounted terminals and Mobile Data equipment. It can also be supplied as a complete 'plug and play' kit.

Part no.	Whip
GPSK-TET	380-430MHz
GPSK-C3G	900, 1800, 1900, 2100MHz
GPSK-W24	2400MHz

Covert MiMo Antenna

FEATURES

- 2x2 MiMo 5G/4G LTE
- 617-960 / 1710-6000MHz
- Optional Integrated GPS/GNSS
- Optional SiSo or 2x2 MiMo WiFi 2.4/5GHz
- ECE 118.03 Compliant Cables

The Panorama BAT range is an ideal 2x2 MiMo 4G/5G antenna for Covert installations with fall back capability to 3G/2G. It can also incorporate a GPS/GNSS antenna and Single or 2x2 MiMo dual band WiFi antenna(s).



Part no.	MiMo LTE	GPS/ GNSS	WiFi	MiMo WiFi
BATM-7-60	2x2			
BATGM-7-60	2x2	•		
BATGM-7-60-S24-58	2x2	•	•	
BATGM-7-60-24-58	2x2	•		2x2

Multifunction Antenna

Multifunction Antenna

Stingray SiSo Antenna

FEATURES

- Cellular, WiFi and GPS/GNSS included
- Dashboard or windshield mount
- Suitable for M3 category vehicles
- ECE 118.03 Compliant Cables

This internal antenna offers a “3 in 1” solution ideal for telematics or other vehicle communications, where the antenna needs to be fitted discretely or for a “no hole” installation. The compact housing incorporates antennas for LTE / Cellular, Dual Band WiFi and GPS/GNSS.

Meeting the requirements of UNECE Regulation R 118, the antenna is suitable for use in M3 Category vehicles (Transportation). The antenna housing is UV resistant and flame retardant, while the integrated coax cables are flame retardant, low smoke specification.



Part no.	Termination
GPSCO-7-27-24-58	SMA
GPSCOF-7-27-24-58	FAKRA

Multifunction Antenna

IP69K RATED



The Fez 5G Antenna

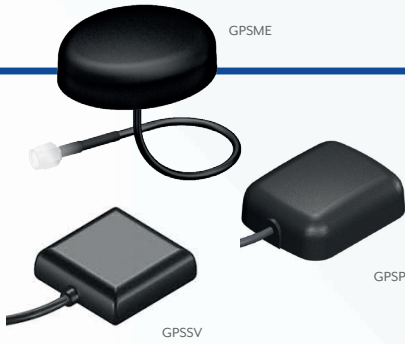
FEATURES

- 5G/4G/3G/2G LTE
- 617-6000MHz
- Optional 1x, 2x2 or 4x4 MiMo WiFi
- Optional integrated GPS/GNSS antenna
- Ground plane independent

The Fez 5G antenna series is a range of low profile antennas incorporating a combination of wideband cellular element covering 617-6000MHz frequencies along with an active GPS/GNSS antenna and a single or dual band WiFi element all in a robust compact housing.

Part no.	LTE	GPS/ GNSS	WiFi	MiMo WiFi
LPE-6-60	•			
LGE-6-60	•	•		
LGE-6-60-DW	•	•		2x2
LGE-6-60-QW	•	•		4x4

Multifunction Antenna



GPS / GNSS Antennas

FEATURES

GPS / GNSS Antennas

Vehicle positioning is an intrinsic part of vehicle and fleet management and is achieved by use of GPS/GNSS technology. An effective antenna with high performance filtering is required to provide reliable operation.

The GPSP offers a permanent, panel mounted option, whilst the GPSME provides the convenience and flexibility of a temporary, no holes solution with a tough magnetic fixing.

The GPSSV type is ideal for covert installation and is supplied with both adhesive and hook/loop pad fixings. A 3m coax cable is supplied as standard, but a version with a 30cm fly lead is available which can be used with an extension coax cable where required.

Part no.

GPSME | GPSSV | GPSP

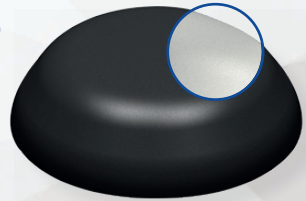
LowProfile UHF Antenna

FEATURES

- 380-520 (Banded) / 800MHz
- Rugged design for heavy duty applications
- Easy installation
- Ground plane Independent

The Panorama low profile UHF antenna range has been designed to perform under extreme pressure. The radome is designed to withstand high impacts while maintaining its functionality.

**IP65
RATED**



Part no.	Frequency (MHz)
LP390	380-400
LP420	410-430
LP440	430-450
LP460	450-470
LPL-S5	806-870

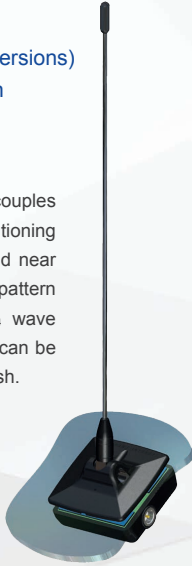
*LG versions available with GPS/GNSS
 ** White version upon request

Glass Mount Antenna

FEATURES

- Excellent performance
- No hole installation
- Solid state coupling (GM versions)
- Quick and easy installation
- Windscreen or rear window mounting

The antenna capacitive couples through glass and its high positioning gives it good performance and near omni-directional radiating pattern similar to a roof-mounted ¼ wave (For GM versions). The whip can be easily removed for the car wash.



**IP65
RATED**

Part no.	Frequency (MHz)
AOG143	138-148
AOG151	142-160
AOG161	156-160
GM390	380-400
GM420	410-430
GM435	425-455
GM455	445-470
GMG-S5	806-870

Special Application Antenna

Half-Wave UHF Antenna

FEATURES

- Flexible whip
- Ground plane independent
- Moulded coaxial cable
- Suitable for vehicles or fixed site applications

The HM range of antennas can be mounted on any surface. The antenna is ideal for motorcycles but can also be used on other vehicles, boats or fixed sites. The HM antenna range has a rugged design with a flexible nylon covered whip. The base features a moulded cable entry and an M14 mounting bolt.



Part no.	Frequency (MHz)	Part no.	Frequency (MHz)
HM-S1	380-400	HM-S4	450-470
HM-S2	410-430	HM-480	470-490
HM-TET	380-430	HM-495	480-510
HM-433	430-440	HM-S5	806-870
HM-451	438-472	HM-D	896-960

Special Application Antenna

UHF Marine Antenna

FEATURES

- Various UHF frequencies
- Optional GPS/GNSS
- Ratchet or deck mount option
- Constructed from marine grade materials
- Optional GPS element

The NA Series antenna fits standard 1"x14TPI marine mounting systems. Can also be supplied with custom extension coaxial cable sets to meet the customer's specific installation requirements.

Ratchet Mount NDRS-SL

Constructed from polished stainless steel, Panorama's NDRS-SL Ratchet Mount is designed to endure the harshest marine environments.



Part no.	Frequency (MHz)	Part no.	Frequency (MHz)
NA-S1-GPS	380-400	NA-S1	380-400
NA-S2-GPS	410-430	NA-S2	410-430
NA-440-GPS	430-450	NA-440	430-450
NA-S4-GPS	450-470	NA-S4	450-470
NA-S5-GPS	806-870	NA-S5	806-870

Special Application Antenna

Heavy Duty SiSo Transit Antenna

FEATURES

- 5G/4G/3G/2G LTE, GSM-R or UHF
- 698-6000MHz or 380-520MHz (Banded)
- Optional integrated GPS / GNSS
- Fully Rail Industry Certified

The TRNC series antenna has been designed specifically to meet railway engineering standards and features a DC grounded radiating element.

The TRNC antenna has a heavy duty cast aluminium base and is housed in a high impact, flame retardant radome moulded in Ultem which provides ingress protection to IP69K.

IP69K RATED



Part no.	LTE/ GSM-R	GPS/ GNSS	WIFI	UHF
TRNC-7-60	•		•	
TRNCG-7-60	•	•	•	
TRNC-TET/S4				•
TRNCG-TET/S4		•		•

Special Application Antenna

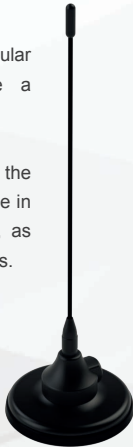
Magnetic Mount Antenna

FEATURES

- Available in VHF + UHF bands
- Temporary fit
- Easy removal
- Strong magnetic retention

The MD range of antennas is a popular choice for vehicles that require a temporarily fixed antenna.

The tough magnetic base will retain the antenna to the roof or boot. Available in all standard VHF and UHF bands, as well as customer-specific frequencies.



Part no.	Frequency (MHz)	Part no.	Frequency (MHz)
MD146-5	141-151	MD420-5	410-430
MD161-5	156-164	MD-TET-5	380-430
MD168-5	162-174	MD-451-5	430-472
MD390-5	380-400	MD-S5-5	806-870

Special Application Antenna

Rapid Deployment Clip Dipole

(CDV/CDU Series)



FEATURES

- Rugged construction
- Fast installation
- Moulded in coaxial cable

The 'Clip Dipole' range is designed for quick and easy assembly and installation on remote sites. An ideal product for temporary use at a public or sports event.

Part no.	Frequency (MHz)		
CDV-E3	67-74		
CDV-E4	74-81		
CDV-E5	81-88		
CDV-H3	132-143		
CDV-JRC	139-157		
CDV-H4	141-151	CDU-S1	380-400
CDV-H5	149-159	CDU-S2	410-430
CDV-H6	156-162	CDU-TET	380-430
CDV-H7	162-174	CDU-U1	410-470
CDV-K5	174-192	CDU-T2	420-456
CDV-K6	192-208	CDU-U	430-472
CDV-K7	208-225	CDU-U2	450-512

Special Application Antenna

Rapid Deployment ½ Wave

(CD Series)

FEATURES

- Groundplane independent
- Fast 'clip on' installation
- Moulded coaxial cable

The performance and scope of portable equipment can often be considerably improved by elevating the antenna to a more effective height. Clip antennas provide an easy way to do this. The CD series features a rugged single end fed ½ wave element.

The jaws of the spring clip are moulded in nylon and are adjustable for any angle. The clip mount features a fully moulded coaxial connection for weather protection and resilience.



Part no.	Frequency (MHz)
CD390	380-400
CD420	410-430
CD433	430-450
CD458	445-470
CD800	806-870
CD900	870-960

UHF / VHF Elevated Antenna

FEATURES

- Mast mount
- VHF, UHF and Tri-Band versions
- Ideal for fixed radio terminal applications
- Quick assembly and installation

Quick and easy to assemble and deploy in the field, this is a unique antenna solution that is ideal where coverage needs to be improved.



UHF Versions

Part no.	Frequency (MHz)
BSU-TET	380-430
BSU-TETG5	380-430 (5dB)
BSU-UT	406-472
BSU-U	430-472
BSU-S4	450-470
BSU-W	470-512
BS800	804-870 (5dB)

VHF Versions

Part no.	Frequency (MHz)
BSV-E3	67-74
BSV-E4	74-81
BSV-E5	81-88
BSV-H3	132-143
BSV-H4	141-151
BSV-H5	149-159
BSV-H6	156-162
BSV-H7	162-174

Tri-Band Versions

Part no.	Frequency (MHz)
BSV-155-S4-821	145-174 / 420-480 / 764-894
BSV-155-UI-BI	150-160 / 410-470 / 746-806
BSV-155-UI-SI	150-160 / 410-470 / 806-870

Special Application Antenna

Special Application Antenna

Panel Mount SiSo Antenna

FEATURES

- Covers 5G/4G/3G/2G LTE 600-6000MHz
- Low Profile, compact design
- High impact resistant housing

The Panorama LPB 5G low profile antenna range has been designed to perform in harsh environments with a robust high impact radome only 82mm (3.2") high. When installed on a 400 x 400mm (15.7" x 15.7") ground plane, the LPB covers global LTE and cellular frequencies in the range 600-6000MHz making it an extremely versatile product.

IP66 RATED



Part no.	Termination	Cable Length
LPB-6-60-05SP	SMA Male	0.5m (1.6')
LPB-6-60-2SP	SMA Male	2m (6.6')
LPB-6-60-2F	FME Male	2m (6.6')
LPB-6-60-5SP	FME Female	5m (16.4')
LPB-6-60-5F	FME Female	5m (16.4')

Cellular Antenna for Mobile Router



4G/5G Bracket Mount Antenna

FEATURES

- Cost Effective 2G/3G/4G/5G coverage 617-960 / 1710-6000MHz
- Wall, mast or panel mount
- Integrated low loss cable

The B4BE antenna is a cost effective omni-directional broad band antenna for 5G/4G/3G and 2G devices from 617-960/1710-6000MHz and is suitable for external or internal installation. The omni-directional radiation pattern allows easy placement of the antenna in an elevated position.

Part no.	Termination	Cable Length
B4BE-6-60-05SP	SMA Plug	0.5m (1.6')
B4BE-6-60-2SP	SMA Plug	2m (6.6')
B4BE-6-60-5SP	SMA Plug	5m (17')

Cellular Antenna for Mobile Router



Magnetic Mount Antenna

FEATURES

Magnetic mount for 'no hole' installation
698-960 / 1710-2700MHz range
Covers 4G/3G/2G LTE

The LPBEM-7-27 is a new generation, high performance magnetic mount antenna that covers all global cellular & LTE frequencies.

The MAR-7-21 is a whip type compact magnetic cellular antenna for temporary mount use. It covers six of the main GSM/LTE bands supporting 2G, 3G and 4G technologies. The stylish flexible design of the antenna whip gives a discreet appearance and resistance to damage.

Part no.	Termination
LPBEM-6-60-2SP	SMA Male 2m (6.6') Cable Length
MAR-7-21-2SP	SMA Male 2m (6.6') Cable Length

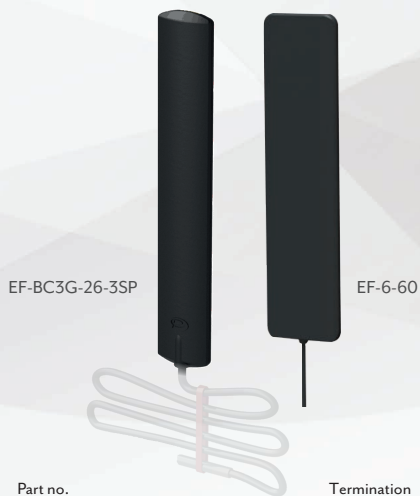
Cellular Antenna for Mobile Router

Internal SiSo LTE Antenna

FEATURES

5G/4G/3G/2G LTE
698-2700MHz
600-6000MHz (EF-6-60 Version)
Simple adhesive pad fitment
Can be fitted on glass or plastic panel

The EF antenna is a low cost single 5G/4G/3G/2G product that can be fitted on any non-conductive surface. It is typically fitted on a window and with correct spacing, a pair can be installed to provide a covert 2x2 MiMo antenna system.



Part no.	Termination
EF-BC3G-26-3SP	SMA Male
EF-6-60-3FAKDJ	FAKRA D Jack
EF-6-60-3SP	SMA Male

Cellular Antenna for Mobile Router

Low Profile Internal MiMo WiFi

FEATURES

Up to 4x4 MiMo WiFi 2.4/5.0GHz

Ceiling mount

Low profile, robust housing

EN50155, EN45545-2 & ECE 118.03

The CM(x)-24-58 range provides a compact, robust internal WiFi antenna with up to 4x4 MiMo function. It is ground plane independent and has integral ultra-low loss coax cables with pre-fitted connectors. The antenna compliance ensures that it is suitable for use in buildings, railway rolling stock and other transportation modes.



Part no.	MiMo WiFi
CM2-24-58	2x2
CM3-24-58	3x3
CM4-24-58	4x4

WiFi Antenna for Mobile Router

Internal On-Glass WiFi Antenna



FEATURES

Dual band 2.4 / 5.0GHz WiFi

Compact dipole antenna

Integral sealed coaxial cable

Ideal for connection to in-vehicle router

The EF-24-58 antenna is a flexible dipole type, suitable for covert or discrete installations. The antenna is supplied with an adhesive pad and can be fixed on a vehicle window glass or plastic trim panel.

Part no.	Termination
EF-24-58-3SP	SMA Male
EF-24-58-3RPSP	Reverse Polarity SMA Male

WiFi Antenna for Mobile Router



Dipole Antenna

FEATURES

- Dipole construction
- Covert bumper mounting
- Flexible wire elements for easy positioning

The covert vehicle dipole antenna is specifically designed for installations where the presence of an antenna must be undetectable.

This specialist antenna is available in versions for VHF or UHF bands and requires tuning during installation to achieve optimal VSWR match. The antenna feed incorporates a 'Bazooka' balun to improve the frequency stability.

Part no.	Frequency (MHz)
VCD-VL-5F	68-88
VCD-VH-5F	130-175
VCD-SI-5F	380-400
VCD-S2-5F	410-430
VCD-S4-5F	450-470

Covert Antenna

Bodyworn Dipole

FEATURES

- Dipole antenna
- Tuning optimised to individuals body
- Flexible wire elements
- Features fully molded T-piece

This antenna can be incorporated in clothing or body armour/stab vests and should be oriented with elements on a vertical plane.

Once in position, the antenna can be tuned to achieve the optimum VSWR/match.



Part no.	Frequency (MHz)	Part no.	Frequency (MHz)
BWDT-H3	132-143	BWDT-T2	420-450
BWDT-H4	141-151	BWDT-S4	450-470
BWDT-H5	149-159	BWDT-495	470-520
BWDT-H6	156-162	BWDT-815	806-870
BWDT-H7	162-174	BWDT-24	2400
BWDT-HTET	380-430		

Covert Antenna

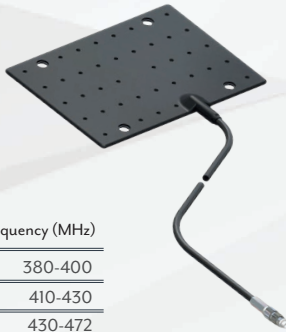
Bumper Antenna

FEATURES

- Fully covert application
- Mounted behind plastic bumper
- Flexible construction
- Does not require any tuning

The Panorama Bumper Mount Antenna is designed for covert operations and other applications which require a vehicle antenna that is effectively invisible.

For optimum performance two bumper antennas can be used, one at the front of the vehicle and one at the rear, to help create a more omni-directional pattern around the vehicle and enable better network coverage. The BMP2 kits come complete with a power divider and 2 bumper mount antennas.



Part no.	Frequency (MHz)	
BMPI-S1	380-400	
BMPI-S2	410-430	
BMPI-U	430-472	
BMPI-S4	450-470	
BMPI-7-27	700-2700	
		Dual Version
BMP2-DPD-S1	380-400	
BMP2-DPD-S2	410-430	
BMP2-DPD-S4	450-470	

Covert Antenna

**IP65
RATED**



Internal On-Glass Antenna

FEATURES

- Semi covert window mount antenna
- Install with no vehicle damage
- Flexible moulding to allow fitting to curved glass

The EF 'easy fit' antennas provide an effective low-visibility 'no-hole' solution.

With their secure but easy to fit adhesive pad mountings, the EF antenna provide a huge range of possibilities for the installer and is ideal for temporary installation in short-term use vehicles.

Part no.	Frequency (MHz)	Part no.	Frequency (MHz)
EF-S1	380-400	EF-W	470-512
EF-S2	410-430	EFBAD	698-960
EF-S3	380-420	EF-S5	806-870
EF-S4	450-470		

Covert Antenna



Offset Dipole

FEATURES

- Improves range
- Easy installation
- Light weight solution
- External & Internal use



The ODP wall mount antenna range is a simple and cost efficient way of providing an fixed antenna for fixed terminals.

Part no.	Frequency (MHz)
ODP-H5	149-159 (2dBi)
ODP-H6	156-162 (2dBi)
ODP-H7	162-174 (2dBi)
ODP-TET	380-430 (2dBi)
ODP-433	410-450 (2dBi)
ODP-HS4	450-470 (2dBi)
ODP-SIG6-4B	380-400 (6dBi)
ODP-S2G6-4B	410-430 (6dBi)
ODP-S4G6-4B	450-470 (6dBi)

InBuilding Antenna

High-gain UHF Directional

FEATURES

- 8dBi peak gain
- Directional panel antenna
- Wall or mast mount

The WM8-TET is a directional panel antenna. The heavy duty ASA radome is resistant to weathering and suitable for outdoor use in challenging environments. The enclosure is vented by a high performance GORE® gland which allows it to breathe while keeping moisture and contaminants out, further increasing service life.

IP65 RATED



Part no.	Frequency (MHz)
WM8-TET	380-400
WM8-U2	450-520

Circularly Polarised	Frequency (MHz)	Polarisation
WM8LCP-TET-NJ	380-400	RHCP
WM8LCP-TET-NJ	450-520	LHCP

InBuilding Antenna

Ceiling Mount UHF Antenna

FEATURES

- Easy installation
- In building UHF coverage
- Suitable for airports and stadiums

The Panorama UHF ceiling antenna can be used to provide network coverage in large buildings for the public services. Used in airports, large campus sites and shopping centres, the antenna can help to reduce holes in coverage and improve signal strength.



Part no.	Frequency (MHz)
CM-S1-08NJ	380-400
CM-S2-08NJ	410-430
CM-S4-08NJ	450-470

InBuilding Antenna



Bracket Mount

FEATURES

- Used with fixed radio terminals
- Wall mount or mast mount
- Improves range

The bracket mount antenna range is an easy to install solution, ideal for a fixed radio terminal in an office.

Part no.	Frequency (MHz)
BM390	380-400
BM420	410-430
BM451	430-472
BM460	450-470
BM-S5	806-872
BM900	890-960

InBuilding Antenna



Bracket Mount

FEATURES

- Panel mount
- Rugged design
- Modular stud fitting
- Interchangeable whips

The M8 is the “industry standard” panel mount base. It incorporates stainless steel earthing teeth and a fully moulded construction with high quality coaxial cable for low loss and long term reliability.

The base is easy to fit and can be installed from above or below the panel. With the modular stud fitting, almost any antenna in the Panorama range can be fitted to the base.

Part no.	Panel Thickness
M8	0-4mm
M8A	4-6mm

Modular Base

MMR

FEATURES

- Temporary mount
- Rugged magnetic mount
- Modular stud fitting

The MMR is large secure magnetic base for professional use that supports a full range of antenna whips. It features a fully moulded construction with high quality coaxial cable.



Part no.	Cable Length
MMR-5	5m (16.5’’)

Modular Base

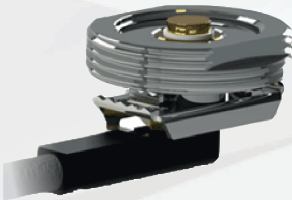
NMO Panel Mount Base

FEATURES

- Panel mount
- Suitable for various whips
- Stainless steel earthing teeth

The Panorama 'NMO' 3/4 inch panel mount antenna base combines compatibility with NMO style antennas with rugged engineering and high quality construction.

This quality panel mount is made from nickel plated brass to resist corrosion, and the earthing teeth are stainless steel to provide excellent earthing with every installation.



SAB-181

The NMO fitting can be converted to Panorama modular stud with the SAB-181 accessory. This allows use with the full modular antenna range. The fitting can be used with both products.

Modular Base



Panel Mount Base With GPS

FEATURES

- Panel mount
- Rugged low profile design
- NMO fitting
- Interchangeable whips

The GPSNMO is a GPS combination antenna that features a low-profile NMO mount and a high-performance GPS element with 26dB gain LNA.

This base fits on panels up to 6.5mm thick with a single hole, and is supplied with 5m length cables.



Modular Base

AQB
Non-Hinged



AQHB
Hinged



Rigid 1/4 Wave

FEATURES

- 1/4 wave whip
- Removable for car wash
- Hinged & non-hinged versions

The AQB & AQHB are Panorama's standard single frequency 1/4 wave rigid whips. These antennas feature a 17-7 PH stainless steel rod with a plated brass terminal protected by black nylon moulding.

Hinged	Non-Hinged	Frequency (MHz)
AQHB-H4A	AQB-H4A	138-155
AQHB-H6A	AQB-H6A	155-174
AQHB-TET	AQB-TET	380-430
AQHB-U	AQB-U	430-472
AQHB-W	AQB-W	470-512
AQHB-S5	AQB-S5	806-870

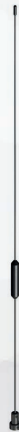
Modular Base

High-gain Whips

FEATURES

- High gain
- Removable for car wash
- Hinged & non-hinged versions

The A5G series is a 5dBi broadband colinear antenna. The phasing coil is over-moulded to provide a rugged antenna for demanding applications. The ACU series is a 7dBi gain antenna for use where network coverage is poor.



ACUB



A5GH



ACUHB

Hinged	Non-Hinged	Frequency (MHz)
A5GM-TET	A5GH-TET	380-430
A5GM-S4	A5GH-S4	450-470
ACUB-S1	ACUHB-S1	380-400
ACUB-S2	ACUHB-S2	410-430
ACUB-U	ACUHB-U	430-472
ACUB-460	ACUHB-460	450-470
	ACUHB-W	470-512

Modular Base

Medium Gain Whips

FEATURES

- Gain whips
- Rugged construction
- Hinged base and removable whip

The AVGHB/AUGHB range is a durable solution for vehicle installations requiring a medium gain antenna. The antennas feature a fully encapsulated impedance matching coil and a 17-7PH stainless steel whip.

AVGHB
5dBi Gain



AUGHB
3.5 dBi Gain



Part no.	Frequency (MHz)	Part no.	Frequency (MHz)
AVGHB-H4	141-151	AUGHB-S1	380-400
AVHGB-H5	149-159	AUGHB-S2	410-430
AVGHB-H6	156-162	AUGHB-TET	380-430
AVGHB-H7	162-174	AUGHB-U	430-472

Modular Base

VHF Wideband Antenna



FEATURES

- Wideband VHF antenna
- Integrated shock mount

The AVWB is a rugged wide band VHF antenna, suitable for users who operate over the full range of VHF frequencies.

The AVWB is compatible with all of the modular bases in the Panorama range.

Supplied with an integrated shock mount, the antenna is protected from impact and damage in low clearance situations.

Part no.	Frequency (MHz)
AVWB-SM-39-68	138-169
AVWB-SM-51-74	151-174

Modular Base

VHF ¼ Wave Flexible Whip

FEATURES

- OEM bee-sting style
- Wideband ¼ wave
- Flexible overmoulded base

The AFBQ is a rugged VHF ¼ wave whip for use on GPSK & GPSB base types. This antenna whip is styled to resemble an OEM 'bee sting' type design and is both discrete and durable, featuring an overmoulded shock spring and stainless steel rod.

Part no.	Frequency (MHz)
AFBQ-H4A	138-155
AFBQ-H6A	155-174
AFBQ-H5	149-159
AFBQ-H7	162-174

Combination Base Whip

5dBi Gain Flexible Whips

FEATURES

- OEM bee-sting style
- High peak gain
- Flexible overmoulded construction

The AFGB offers omni-directional performance with 5dBi peak gain. The antenna whip is styled like an OEM 'bee-sting' type antenna and is both discrete and durable featuring an overmoulded coil and stainless steel rod.

The antenna base is flexible for added damage resistance and can be mounted on a range of Panorama GPS combination bases.

Part no.	Frequency (MHz)
AFGB-395	380-410
AFGB-S2	410-430
AFGB-S4	450-470
AFGB-832	760-870
AFGB-B1	745-806
AFGB-S5	806-870

Combination Base Whip

¼ Wave Flexible Whips

FEATURES

- 1/4 wave whip 2dBi Gain
- Removable for car wash
- Rugged and flexible

AFB type features a multi-wire elements within a black nylon tube.

AFNT type features a nickel titanium wire for ultra flexibility and low visibility.



Part no.	Frequency (MHz)	Part no.	Frequency (MHz)
		AFB-S1	380-400
		AFB-S2	410-430
AFNT-H4A	138-155	AFB-TET	380-430
AFNT-H6A	155-174	AFB-U	430-472
AFNT-TET	380-430	AFB-UT	406-472
AFNT-U430	450-470	AFB-S4	450-470
AFNT-U2	450-512	AFB-W	470-520

Combination Base Whip



Tri-Band Whips

FEATURES

- Tri band function
- Flexible rod with wound element
- Fits Panorama GPS combination bases

The ASF whips are stylish, discrete and durable, featuring a flexible overmoulded base section and a black jacketed flexible wound rod element.

Designed to be mounted on the GPSB, GPSD and GPSK range of bases, and used with a Panorama Triplexer.

Part no.	Frequency (MHz)
ASF-155-U2-B1	150-160 / 450-512 / 745-806
ASF-155-U2-S5	150-160 / 450-512 / 806-876
ASF-155-S4-821	150-160 / 450-470 / 764-896

*Base sold separately

Combination Base Whip

VHF / UHF Diplexer

FEATURES

Allows dual band antenna to be used with 2 radios or dual band radio with separate VHF and UHF antennas

The Panorama VHF/UHF diplexer is housed in a compact, robust die cast case for reliability and easy mounting.

The Diplexer uses a stripline design to provide low insertion loss with high port to port isolation and high power handling capability.



Part no.	Frequency (MHz)	
	DPX-210-270	VHF
UHF		270-1000

Accessories

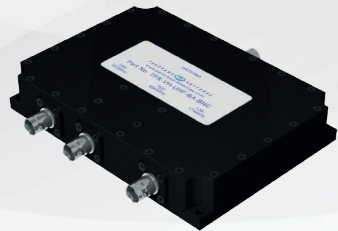
VHF / UHF / 7-800MHz Triplexer

FEATURES

Low insertion loss, high port-to-port isolation
Use one antenna for 3 radios or vice versa
VHF, UHF, 7/800MHz

The Panorama triplexer, TPX-VH-UHF-BA-TNC can either combine the signals from three antennas to a single multiband radio or split the signal from a tri-band antenna to three separate radios. Each port provides a low insertion loss passband for the respective frequency range. The unit is available with TNC female connector type on each port

This compact unit requires no power and can easily be installed in the roof lining of any vehicle or mounted next to the radio.



Part no.	Frequency (MHz)	
	TPX-VH-UHF-BA-TNC	VHF
UHF		380-520
7/800		760-896

Accessories

VHF / UHF With 7-800MHz Diplexer

FEATURES

- Use one antenna for 2 radios
- Splits VHF & UHF from 7/800MHz & cellular
- Easy to install

The DPX-500-700 offers the opportunity to utilise a single multiband antenna with two radios. This conserves valuable vehicle real estate and saves on antenna installation costs.

The diplexer has low loss characteristics and is perfect for splitting a single antenna to a VHF or UHF radio and a 7/800MHz radio.

The diplexer is compact enough to locate in a vehicle headliner and is fitted with FME (m) connectors.



Part no.	Frequency (MHz)	
	DPX-500-700	VHF/UHF
700-2500		700-2500

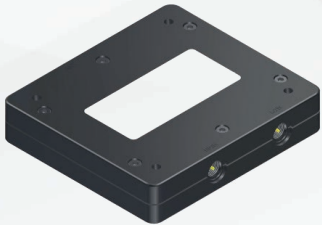
Low / High Pass Filter

FEATURES

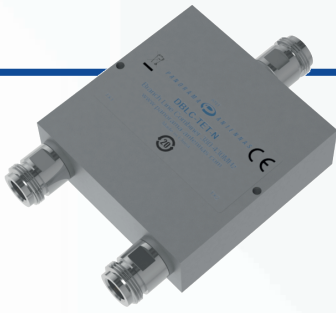
- Low insertion loss
- High out of band rejection
- F-HP270-F (High Pass Filter)
- F-LP270-F (Low Pass Filter)

The F-HP270-F offers an ideal solution for protecting UHF radios from out of band interference. The F-HP270-F can be used with the F-LP210-F to protect co-located VHF / UHF systems from interfering with each other.

The filter is compact enough to locate in a vehicle headliner and is fitted with FME (m) connectors on all ports.



Part no.	Frequency (MHz)
	F-LP210-F
F-HP270-F	270-1000



UHF Antenna Combiner

FEATURES

Combines two UHF radios to one

When you can only fit one antenna on a vehicle, then this combiner is the solution providing > 26dB isolation over 380-430MHz with an antenna match at 1.2:1 and low insertion loss.

Technical Note:

The isolation provided by this device is dependent on the antenna VSWR. An antenna match of 1.5:1 VSWR will result in a reduction of isolation to 20dB. Higher VSWR on the antenna port will result in a further reduction in isolation between the TX ports. does not exceed 1.5:1.

Part no.	Frequency (MHz)
DBLC-TET-N	380-430

GPS Splitter

FEATURES

- Reduce installation costs
- Run two GPS receivers from a single antenna
- DC block on one port

The Panorama DPD-GPS allows you to run two GPS receivers from a single antenna. The DPD-GPS splits the received signal from the antenna to two receivers while only allowing one of the receivers to feed voltage to the antenna, ensuring that the antenna is able to function correctly.

The DPD-GPS allows both GPS receivers to use an optimally located antenna, thereby reducing clutter and installation costs.



Part no.	Frequencies (MHz)
DPD-GPS	1562-1614

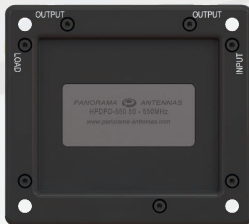
VHF/UHF Splitter/ Combiner

FEATURES

Optimise antenna performance
Connect two antennas to one radio

The HPDPD-550 series is a range of power dividers designed to split the power from a radio to distribute it to two separate antennas. Designed to support Panoramas' covert VCD (VHF) and BMP (UHF) bumper / fender mount antennas the HPDPD-550 range comes in three variants for up to 15W, 60W and 150W Input Power respectively,

Covering a frequency range from 50-550MHz the HPDPD efficiently distributes power to two antennas with low insertion loss allowing users to install covert antennas at opposite ends of a vehicle to ensure maximal coverage.



Part no.	Frequencies (MHz)
HPDPD-550	50-550



MTP850 Adapter

FEATURES

Remote antenna adaptor for Motorola
MTP850 radio
Spring loaded contact pin
Sturdy quick release lock

A 'one of a kind product' the ADPT-85-05SJ is specifically designed for use with the Motorola MTP850 TETRA radio. With spring loaded contact pin and durable quick fit/release feature, it is both simple to connect and reliable to use. Designed for use with any antennas from Panoramas' temporary, vehicle and body worn ranges the ADPT unlocks the full potential of the MTP850 radio for covert, surveillance and other tactical applications.

Note: The standard belt clip cannot be used in conjunction with this adaptor.

Termination	
Cable Length	50cm (19.6")
Cable Type	RG316
Connector	SMA Jack (f)

Accessories

Specialist Antenna

Ultra-flexible UHF Portable Antenna

FEATURES

- Radio specific ¼ wave whip
- Ultra-flexible multi strand wire whip
- Fully moulded connector
- Ideal for covert/bodyworn applications

This antenna features an ultra-flexible ¼ wave whip. Tuned to match the radio characteristics, it will provide consistent performance across the full operating frequency range.

Part no.	Compatibility
SFQ-SC21-TET	Sepura SC21
SFQ-SRP2-TET	Sepura SRP/SRH
SFQ-MT8-TET	Motorola MTP850



VHF / UHF Portable Antennas



MXK



PXK



MFX



MFXU



MVQ



MQ



PUG

Description	moulded compressed helical	moulded compressed helical	moulded VHF helical	moulded UHF helical	moulded UHF quarterwave	moulded UHF quarterwave	UHF halfwave
Freq. (MHz)	67-88	141-225	141-366	330-512	141-336	330-512, 698-960	350-512

*Various connector / radio types available. Check Panorama website.

Coaxial Adapters

Panorama has an extensive range of coaxial adaptors for different applications. Our most popular types are listed here – enquire if you don't see what you need.

Part no. CA-BP-FP

BNC Plug (m) to FME Plug (m)



Part no. CA-TP-FP

TNC Plug (m) to FME Plug (m)



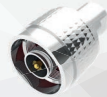
Part no. CA-SP-FP

SMA Plug (m) to FME Plug (m)



Part no. CA-NP-FP

N Plug (m) to FME Plug (m)



Part no. CA-FP-FP

FME Plug (m) to FME Plug (m)



Part no. CA-PLP-FP

PL259 Plug (m) to FME Plug (m)



Part no. CA-MP-FP

Mini-UHF Plug (m) to FME Plug (m)



Part no. CA-NP-SAJ

N Plug (m) to SMA Jack adapter (f)



PANORAMA ANTENNAS

Head Office - United Kingdom
sales@panorama-antennas.com
+44 (0)20 8877 4444

Australia
sales.apac@panorama-antennas.com
+61 (08) 9314 1381

France
fr.sales@panorama-antennas.com
+33 554 070 436

Germany
de.sales@panorama-antennas.com
+49 2303 902 88 00

Singapore
sales.sea@panorama-antennas.com
+65 9155 4194

USA
sales.nam@panorama-antennas.com
+1 817-539-1888