

UNPACKING

The Vess box contains the following items:

- Vess J3600s Storage Enclosure
- 1.5m (4.9 ft) Power cord
- Sliding rail assembly for rack mounting
- SFF-8644 external SAS cable
- DB9-to-RJ11 serial data cable
- This Quick Start Guide



Caution

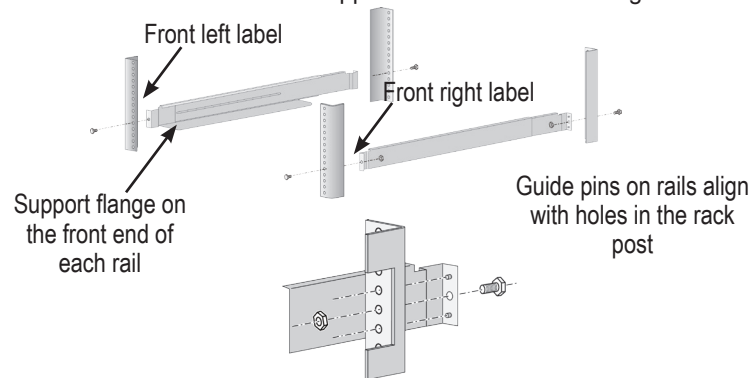
To lighten the enclosure, remove all hard drive carriers. Replace the drive carriers after the unit is mounted in your rack.

INSTALL IN RACK

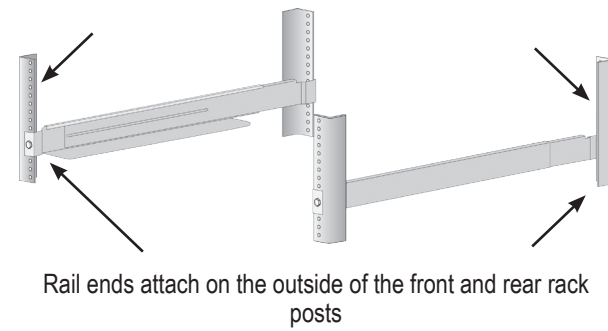
Before installing the Vess J3600s 3U enclosure in the rack, first remove the drive carriers with the hard disks installed to reduce the weight of the enclosure.

To install the Vess J3600s subsystem into a rack with the supplied mounting rails:

1. Check the fit of the mounting rails in your rack system.
2. Adjust the length of the mounting rails as needed.
 - The rear rail slides inside the front rail. The rail halves are riveted together and use no adjustment screws.
 - The front-left and front-right mounting rail ends are labeled.
 - Be sure the front rail support is on the bottom facing inward.



- All rail ends, front and rear, attach at the outside of the rack posts.
- The guide pins at the rail ends align with the holes in the rack posts.
- Use the attaching screws and flange nuts from your rack system. Tighten the screws and nuts according to instructions for your rack system. Place the empty Vess J3600s enclosure onto the rails.



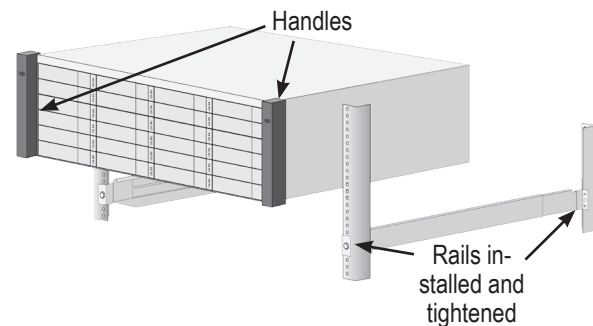
Rail ends attach on the outside of the front and rear rack posts



Caution

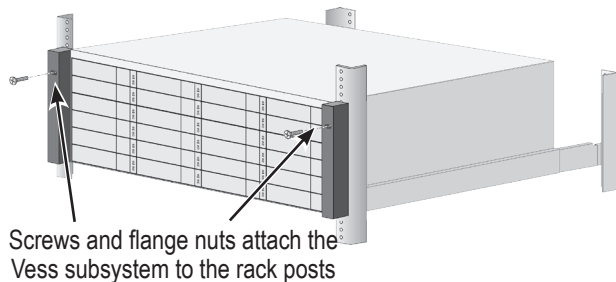
Two persons are needed to safely place the unit onto the rails.
DO NOT lift the unit by the handles

- At least two persons are required to safely lift the subsystem.
- Lift the Vess J3600s itself. Do not lift the subsystem by its handles.



3. Secure the Vess J3600s to the rack.

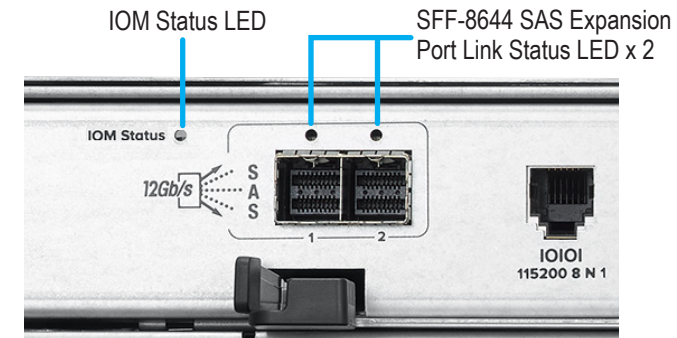
- The unit attaches to the rack posts using the included screws and flange nuts. One screw each side, in the upper hole only.
- Use the attaching screws and flange nuts that came with the Vess J3600s



Screws and flange nuts attach the Vess subsystem to the rack posts

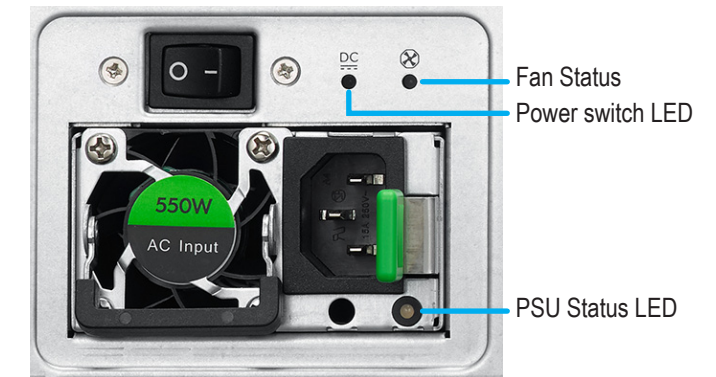
LEDs ON BACK

Controller LEDs



LED name	Status	Description
IOM status LED	Off	Off
	Green	Ready
	Red	FW is not Ready
SFF-8644 SAS Expansion Port Link status LED	Off	Link down
	On (Steady Green)	Link up
	Blinking Green	Activity

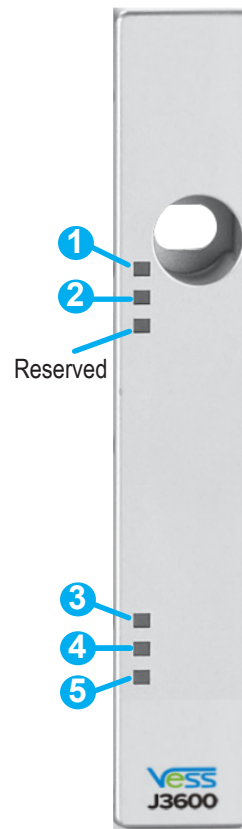
Power supply LEDs



LED name	Status	Description
PSU Status	Off	Not detected
	On (Steady Green)	Normal
	Flashing Green	Power off and in standby mode
Power Switch	Off	Not detected
	Green	Normal
	Red	Failed
Fan Status	Off	Not detected
	Green	Normal
	Red	Failed

LEDs ON FRONT

Front LED on right handler



	LED name	Status	Description
1	Power	OFF	System Power Off
		Blue	System Power On
2	Global Enclosure Status	Off	System Power Off
		Green	OK/Healthy
		Amber	Malfunction
		Red	Critical
3	I/O module 1 activity	Off	No I/O
		Steady Blue	No I/O and SAS expansion port is linked
		Blink Blue	I/O Running
4	I/O module 2 activity	Off	No I/O
		Steady Blue	No I/O and SAS expansion port is linked
		Blink Blue	I/O Running
5	Heartbeat	Off	System Power Off
		Blink Blue	IOM FW works. (Dual IOM blink every 2 sec, single IOM blink every 4 sec)

Drive carrier LEDs



LED name	Status	Description
Disk Status	OFF	Drive is not configured
	Steady Green	Drive is configured
	Blinking Green	Locator feature
	Amber	Drive is rebuilding
	Red	Drive error or failure
Power/Activity	Off	No drive present
	Steady Blue	Drive present
	Flashing Blue	Activity on drive

JBOD EXPANSION SETUP

JBOD expansion requires one SFF-8644 to SFF-8644 external SAS cable for each JBOD unit. The Vess J3600s is intended for use with the Vess A6000 Series and Vess A7000 Series models. Up to 12 Vess J3600s unit can be used with each Vess R3600; up to 5 Vess J3600sS can be used with each Vess A6000 or Vess A7000 unit. Note that Vess R3600s is available with dual controllers can be connected to dual controller Vess J3600sD. See examples below.

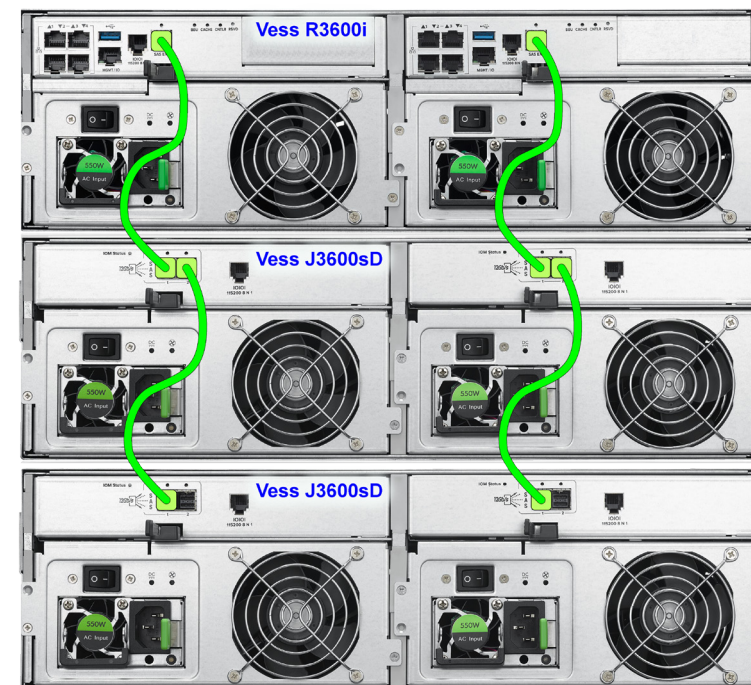
For a cascading SAS connection to Vess R3600, Vess A6000 or Vess A7000 models, use SFF-8644 external SAS cables to perform these tasks:

DUEL CONTROLLER EXPANSION (Vess R3600sD)

To setup a redundant JBOD cascading connection:

1. Use the SFF-8644 external SAS cable supplied with the Vess J3600sD to connect the SAS port in left controller of the Vess R3600sD to a SAS port 1 of left controller on the uppermost Vess J3600sD in the rack.
2. Connect SAS Port 2 of the left controller on the same Vess J3600sD to the SAS Port 1 of the left controller on the next Vess J3600sD in the stack.
3. In the same manner, connect the SAS ports of the right controllers on the Vess R3600sD to the right controllers of the Vess J3600sD in the stack.
4. Connect the remaining Vess J3600sD enclosures in the same manner.

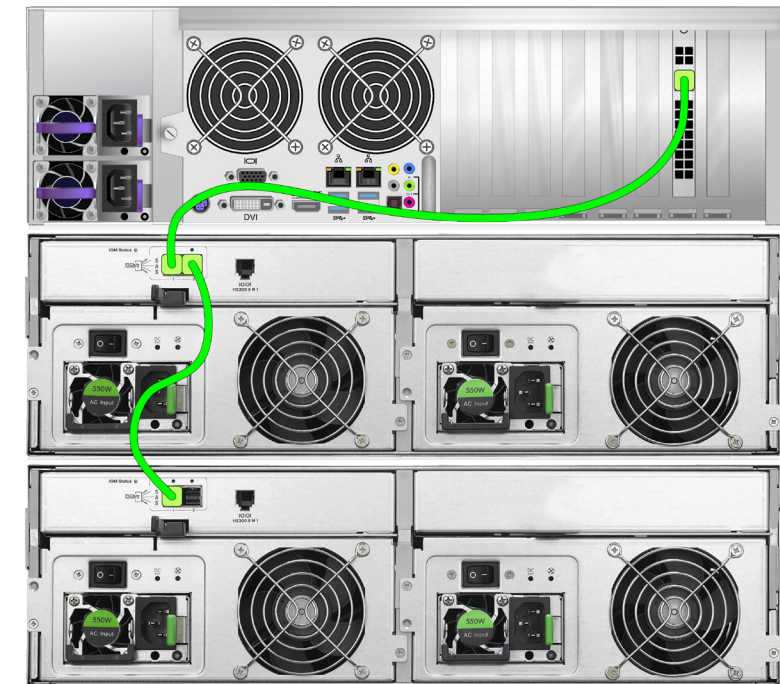
Vess R3600 with Vess J3600sD JBOD expansion



SINGLE CONTROLLER EXPANSION

1. Connect the SFF-8644 SAS port in the host Vess R3600, Vess A6000 or Vess A7000 system to SAS Port 1 on the uppermost Vess J3600sS unit in the rack.
2. Connect SAS Port 2 on the same Vess J3600sS to the SAS Port 1 on the next Vess J3600sS in the stack.
3. Connect the remaining Vess J3600sS enclosures in the same manner.

Vess A6000 with Vess J3600sS JBOD expansion



CONNECTING THE POWER

Insert the female end of one of the supplied power cables in to a power cable receptacle on each of the power supply units, and plug the other end in to a suitable power outlet. There are two power supplies on each Vess J3600s.

Important
Always power on the JBOD subsystems first.