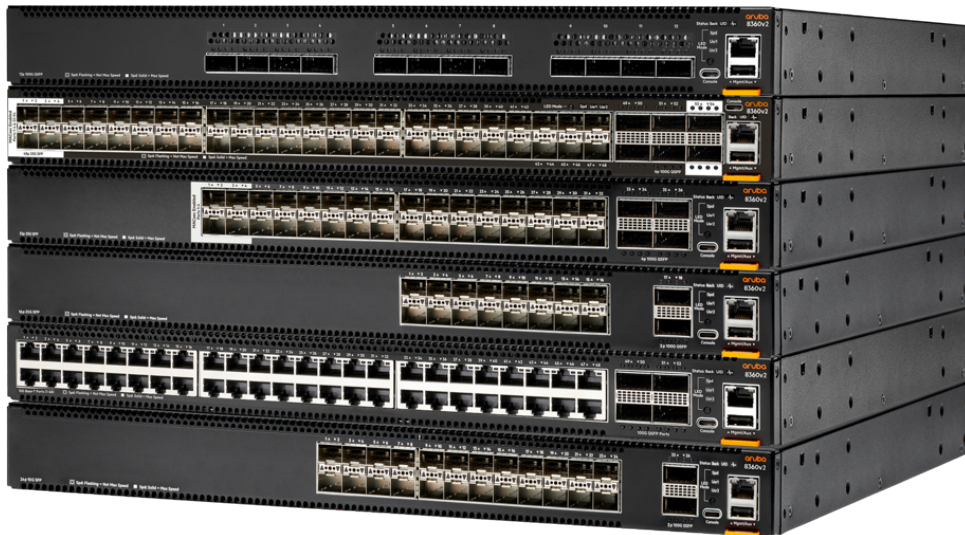


HPE Aruba Networking CX 8360 v2 Switch Series



What's new

- 48-port 1/10/25G with 4 MACsec, 6-port of 40/100G with 2 MACsec.
- MACsec secured connectivity over untrusted domains.
- Intelligent monitoring and visibility with Aruba Network Analytics Engine.
- High availability with industry leading VSX redundancy.

Overview

The Aruba CX 8360 v2 Switch Series offers a flexible and innovative approach to addressing the application, security, and scalability demands of the mobile, cloud, and IoT era. These switches serve the needs of the next generation core and aggregation layer of campuses, as well as virtual and cloud data center environments. The first switch in this series is the Aruba CX 8360-48Y6C v2 switch.

Features

Modular Cloud-Native Architecture

The Aruba CX 8360 v2 Switch Series AOS-CX simplify the complexities of managing data center networks with automation options to match your IT organization's operating model.

Proactively detect issues and speed troubleshooting with actionable insights provided by an analytics engine embedded in every switch. Always-on infrastructure designed for resiliency and upgrades with zero downtime.

REST APIs and Python scripting provide fine-grained microservices architecture enabling full integration with other workflow systems and services.

Continual state synchronization provides superior fault tolerance and high availability. Always-on infrastructure designed for resiliency and upgrades with zero downtime.

Aruba Network Analytics Engine

The Aruba Network Analytics Engine (NAE) for advanced telemetry and automation. NAE is an industry-first monitoring and troubleshooting system, providing greatly improved network operations. NAE uniquely provides the ability to monitor and easily troubleshoot network health and congestion issues.

Customers can use data from The Time Series Database (TSDB) to store configuration and operational state to write software modules to troubleshoot problems. This data may also be used to analyze trends, identify anomalies, and predict future capacity requirements.

High Availability and Resiliency

All software processes in the Aruba CX 8360 v2 Switch Series run as microservices that communicate via the state database of the switch; there is no direct communication between microservices. Should a software process crash, the impact of that failure will be limited.

The ability of ArubaOS-CX to maintain synchronous state across dual control planes allows a unique high availability solution called Aruba Virtual Switching Extension (VSX).

Aruba VSX provides a robust, yet simple solution for high availability with a unique design for control plane synchronization and an architecture that is redundant in both hardware and software by deploying two chassis with an inter-switch link, maintaining its independent control.

Software-Defined Automation

The Aruba CX 8360 v2 Switch Series is supported by Aruba Fabric Composer, a software-defined orchestration solution that simplifies and accelerates leaf-spine network provisioning and day-to-day operations across rack-scale compute and storage infrastructure.

Orchestrate a discrete set of switches as a single networking fabric to simplify operations and troubleshooting. This infrastructure and application-aware solution also automates various configuration and lifecycle events.

Technical specifications

HPE Aruba Networking CX 8360 v2 Switch Series

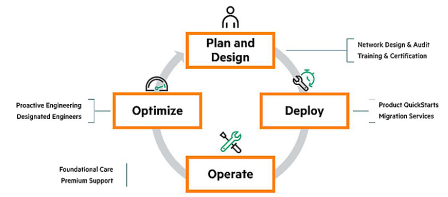
Ports	Depends on the model: 12 ports of 40GbE/100GbE (QSFP+/QSFP28) (optional 4x10G/25G breakout cables supported); 24 ports of 1GbE/10GbE (SFP/SFP+) 2 ports of 40GbE/100GbE (QSFP+/QSFP28) (optional 1GBASE-T SFP and 10GBASE-T SFP+ transceivers and 4x10G/25G breakout cables supported); 48 ports of 100M/1GbE/10GBASE-T 4 ports of 40GbE/100GbE (QSFP+/QSFP28)
Memory and processor	CPU: 1.8 GHz 4-core 64-bit RAM: 16 GB Flash/Storage: 32 GB Packet Buffer: 32 MB
Throughput	2,678 Mpps
Routing/switching capacity	From 1.2 Tbps to 4.8 Tbps depends on the model
Switch fabric speed	From 1.2 Tbps to 4.8 Tbps depends on the model
Switching capacity	From 1.2 Tbps to 4.8 Tbps depends on the model
Routing capabilities	Static (IPv4/IPv6): RIPv2 RIPng OSPF OSPFv3 BGP-4 MP-BGP with IPv6 PBR ECMP GRE, MPLS
Management features	RJ-45 serial and USB-C console RJ-45 Ethernet port USB-Type A
Power supply name	2 field-replaceable and hot-swappable power supplies depends on the model
Power consumption	From 110W to 230W (Idle Power), from 350W to 725W (Max Power) depends on the model
Heat dissipation	From 1,109 to 1,450 BTU/hr depends on the model
Product dimensions (metric)	From 4.40 x 4.42 x 40.6 cm to 4.40 x 4.42 x 55.9 cm
Weight	From 7.71 kg to 10.73 kg depends on the model

For additional technical information, available models and options, please reference the QuickSpecs

HPE Aruba Networking Services

HPE Aruba Networking services simplify and accelerate the network technology lifecycle, enabling your network to scale with better predictability and cost-effectiveness. Whether you operate your own network and need to improve your IT efficiencies, or you want to offload some of the burden, we have the services you need to reach your goals.

Learn more about what HPE Services - Aruba Networking has to offer at: arubanetworks.com/services/



Support Services from HPE Aruba Networking

Our support portfolio provides the essential support elements as well as proactive and preventive features to help you improve your team's productivity and get the most from your network. Our support customers benefit from faster issue resolution, simplified operations and efficiencies, and reduced network issues.

Professional Services from HPE Aruba Networking

With deep intellectual capital and purpose-built tools, our team delivers a range of standard and custom professional services designed to accelerate your value from HPE Aruba Networking technology.

Project based services

include:

- Planning, audit, and assessment
- Architecture review and design
- Deployment, migration, and knowledge transfer

Annual subscription services include:

- Network optimization
- Intelligent Operations
- Customer Experience Management

Make the right purchase decision. Contact our presales specialists.

[Find a partner](#)



Chat now (sales)



Call now



Buy now



Share now



Get updates

Our [Education Services](#) allow your team to come up to speed quickly.

HPE Aruba Networking Network as-a-Service (NaaS)

Our NaaS solution, HPE Aruba Networking Managed Connectivity Services, part of the HPE GreenLake services family, simplifies network operations, accelerates equipment handling, and increases the value of your HPE Aruba Networking network. If you need expert guidance and automation-based operations for your team, please explore the NaaS approach from HPE Aruba Networking [here](#).

© Copyright 2023 Hewlett Packard Enterprise Development LP. The information contained herein is subject to change without notice. The only warranties for Hewlett Packard Enterprise products and services are set forth in the express warranty statements accompanying such products and services. Nothing herein should be construed as constituting an additional warranty. Hewlett Packard Enterprise shall not be liable for technical or editorial errors or omissions contained herein.

Parts and Materials: HPE will provide HPE-supported replacement parts and materials required to maintain the covered hardware.

Parts and components that have reached their maximum supported lifetime and/or the maximum usage limitations as set forth in the manufacturer's operating manual, product quick-specs, or the technical product data sheet will not be provided, repaired, or replaced as part of these services.

Image may differ from the actual product PSN1014578434BEEN, December, 2023.