

RP2f/ RP4f SERIES RUGGED MOBILE PRINTER

Configuration Guide



VEHICLE DOCKS



QUAD DOCKS



RP4f 4-INCH

RP2f 2-INCH

THE
FUTURE
IS
WHAT
WE
MAKE IT

Honeywell

TABLE OF CONTENTS

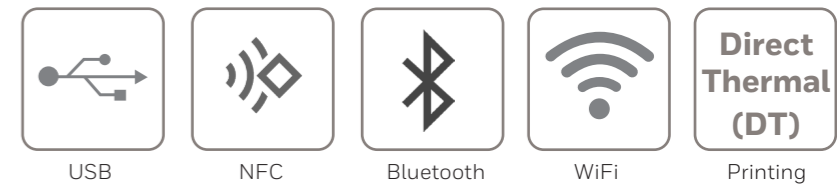
- 1 TABLE OF CONTENTS**
- 2 RP2f FEATURE OVERVIEW**
2-INCH - 203 DPI - DIRECT THERMAL
- 3 RP4f FEATURE OVERVIEW**
4-INCH - 203 DPI - DIRECT THERMAL
- 4 RP SERIES CONFIGURATION MAP**
MOBILE PRINTER
- 5 RPF SERIES MEDIA**
SPECIFICATIONS
- 6 RPF SERIES SOFTWARE**
PRINTSET MC
- 7 HONEYWELL EDGE SERVICES**
GOLD REPAIR SERVICES - 3 YEAR
PLATINUM REPAIR SERVICES - 3 YEAR
GOLD REPAIR SERVICES - 5 YEAR
PLATINUM REPAIR SERVICES - 5 YEAR
RPF SERIES - REPAIR SERVICES COVERAGE
- 10 RPF SERIES CHARGING AND COMMUNICATION**
AC CHARGING AND USB CONFIGURATION
- 11 RPF SERIES CHARGING OPTIONS**
OPTION 1 - SINGLE WALL MOUNT CHARGER
OPTION 2 - MULTIPLE WALL CHARGER
OPTION 3 - RP2F QUAD CHARGER
OPTION 4 - RP4F QUAD CHARGER
- 13 RP2f SERIES VEHICLE INSTALL**
OPTION 1 - RP2F PORTABLE VEHICLE DOCK CHARGER
OPTION 2 - RP2F FIXED VEHICLE DOCK CHARGER
- 14 RP4f SERIES VEHICLE INSTALL**
OPTION 1 - RP4F PORTABLE VEHICLE DOCK CHARGER
OPTION 2 - RP4F FIXED VEHICLE DOCK CHARGER

- 15 RP SERIES BATTERY OPTIONS**
OPTION 1 - 4-BAY BATTERY CHARGER
OPTION 2 - BATTERY ELIMINATOR
- 16 RP SERIES BATTERY**
SPARE BATTERY OPTIONS
- 17 ACCESSORIES**
RP2F ENVIRONMENT SOFT CASE
RP4F ENVIRONMENT SOFT CASE
CONSUMABLES AND CABLES
- 19 MISCELLANEOUS**
AC CORDS



RP2f FEATURE OVERVIEW

2-inch - 203 DPI - Direct Thermal



Included in the box:

- RP2f Mobile Printer
- RP Series Regulatory Sheet (SPS-PPR-RP234-ML-RS-01)
- Smart Battery - 2,500mAh (50166632-001)



- Belt Clip (280797-000-SP)



RP2f - WiFi/ Bluetooth - 203 DPI



RP2f - Bluetooth Only - 203 DPI



PART NUMBER	MEDIA	REGION	DESCRIPTION
RP2F0000D10	RECEIPT & LABELS	NORTH AMERICA	RP2f, USB, NFC, Bluetooth 5.0 + LE, 802.11a/b/g/n/ac, US, Battery
RP2F0000D20	RECEIPT & LABELS	REST OF WORLD	RP2f, USB, NFC, Bluetooth 5.0 + LE, 802.11a/b/g/n/ac, ROW, Battery
RP2F0001D10	LINERLESS	NORTH AMERICA	RP2f, USB, NFC, Bluetooth 5.0 + LE, 802.11a/b/g/n/ac, US, Linerless , Battery
RP2F0001D20	LINERLESS	REST OF WORLD	RP2f, USB, NFC, Bluetooth 5.0 + LE, 802.11a/b/g/n/ac, ROW, Linerless , Battery

PART NUMBER	MEDIA	REGION	DESCRIPTION
RP2F0000B10	RECEIPT & LABELS	GLOBAL	RP2f, USB, NFC, Bluetooth 5.0 + LE, Battery
RP2F0001B10	LINERLESS	GLOBAL	RP2f, USB, NFC, Bluetooth 5.0 + LE, Linerless , Battery

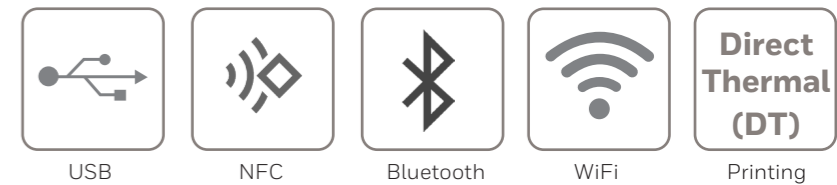
Note: Not all printer combinations are available in every region. Check your local Price Book to see which part numbers are available for sale.

Honeywell Repair Services

SVCRP2-SG3N	RP2, Edge Service, Gold Maintenance Contract, 3 Year, New Contract
ADD SVCREPLACE-PRN3	AddOn, Edge Service, Device Replacement, Printer, 3 Year
ADD SVCACC-PRN3	AddOn, Edge Service, Accessory Service, Printer, 3 Year

RP4f FEATURE OVERVIEW

4-inch - 203 DPI - Direct Thermal



Included in the box:

- RP4f Mobile Printer
- RP Series Regulatory Sheet (SPS-PPR-RP234-ML-RS-01)
- Smart Battery - 4,900mAh (50138010-001)



- Belt Clip (280797-000-SP)



RP4f - WiFi/ Bluetooth - 203 DPI



RP4f - Bluetooth Only - 203 DPI



PART NUMBER	MEDIA	REGION	DESCRIPTION
RP4F0000D12	RECEIPT & LABELS	NORTH AMERICA	RP4f, USB, NFC, Bluetooth 5.0 + LE, 802.11a/b/g/n/ac, US, Battery
RP4F0000D22	RECEIPT & LABELS	REST OF WORLD	RP4f, USB, NFC, Bluetooth 5.0 + LE, 802.11a/b/g/n/ac, ROW, Battery
RP4F0010D22	RECEIPT & LABELS	INDIA, CHINA	RP4f, USB, NFC, Bluetooth 5.0 + LE, 802.11a/b/g/n/ac, INDIA/ CHINA, Battery
RP4F0001D12	LINERLESS	NORTH AMERICA	RP4f, USB, NFC, Bluetooth 5.0 + LE, 802.11a/b/g/n/ac, US, Linerless , Battery
RP4F0001D22	LINERLESS	REST OF WORLD	RP4f, USB, NFC, Bluetooth 5.0 + LE, 802.11a/b/g/n/ac, ROW, Linerless , Battery
RP4F0011D22	LINERLESS	INDIA, CHINA	RP4f, USB, NFC, Bluetooth 5.0 + LE, 802.11a/b/g/n/ac, INDIA/ CHINA, Linerless , Battery

PART NUMBER	MEDIA	REGION	DESCRIPTION
RP4F0000B12	RECEIPT & LABELS	GLOBAL	RP4f, USB, NFC, Bluetooth 5.0 + LE, Battery
RP4F0010B12	RECEIPT & LABELS	INDIA, CHINA	RP4f, USB, NFC, Bluetooth 5.0 + LE, INDIA/ CHINA, Battery
RP4F0001B12	LINERLESS	GLOBAL	RP4f, USB, NFC, Bluetooth 5.0 + LE, Linerless , Battery
RP4F0011B12	LINERLESS	INDIA, CHINA	RP4f, USB, NFC, Bluetooth 5.0 + LE, Linerless , INDIA/ CHINA, Battery

Note: Not all printer combinations are available in every region. Check your local Price Book to see which part numbers are available for sale.

Honeywell Repair Services

SVCRP4-SG3N	RP4, Edge Service, Gold Maintenance Contract, 3 Year, New Contract
ADD SVCREPLACE-PRN3	AddOn, Edge Service, Device Replacement, Printer, 3 Year
ADD SVCACC-PRN3	AddOn, Edge Service, Accessory Service, Printer, 3 Year

RP SERIES CONFIGURATION MAP

Mobile Printer

MODEL	VERSION	CUSTOMIZATION	REGION	MEDIA HANDLING	COMMUNICATION	BATTERY OPTION	DESCRIPTION	NOTES
RP								
	2						2-inch	RP2: Dimensions (H x W x D): 160 mm x 116 mm x 77 mm (6.3 in x 4.6 in x 3.0 in) Printer Weight: 0.72 kg (1.5 lb) with battery, no media
	4						4-inch	RP4: Dimensions (H x W x D): 187 mm x 164 mm x 77 mm (7.36 in x 6.46 in x 3.0 in) Printer Weight: 1.02 kg (2.24 lb) with battery, no media
		A					Datamax-O'Neil CEE Platform	Printer Command Languages: Line Printer Mode, Easy Print, DPL (Datamax Printer Language), ZPL II (Zebra Printer Language), CPCL, IPL (Intermec Printer Control Language), XML (limited) - NETira Configuration Tool
		F					Honeywell Printer Edge Platform	Printer Command Languages: FP/DP (Fingerprint / Direct Protocol), DPL (Datamax Printer Language), ZPL II (Zebra Printer Language), IPL (Intermec Printer Control Language), XML Printing, C# Smart Printing, PDF, CPCL, EZ-Print - PrintSet 5 Configuration Tool and PrintSet MC
			00				Standard	
				0			Global	Made in China
				1			India, Israel, China	Made in China
				N			Mexico	Made in Mexico
					0		Standard Platen Roller	Tags, receipt paper, labels, lined with black mark or gap sensing
					1		Linerless Platen Roller	Linerless media
					00		USB Only	
					B0		USB, Bluetooth 4.0 + LE	Only for RP2A/RP4A CEE Platform
					B1		USB, Bluetooth 5.0 + LE	Only for RP2F/RP4F Honeywell Printer Edge Platform
					C0		USB, Bluetooth 4.0 + LE & WiFi 802.11a/b/g/n - North America	Only for RP2A/RP4A CEE Platform
					C1		USB, Bluetooth 4.0 + LE & WiFi 802.11a/b/g/n - Rest Of World	Only for RP2A/RP4A CEE Platform
					C2		USB, Bluetooth 4.1 + LE & WiFi 802.11a/b/g/n/ac - North America	Only for RP2A Enhanced/RP4A Enhanced CEE Platform
					C3		USB, Bluetooth 4.1 + LE & WiFi 802.11a/b/g/n/ac - Rest Of World	Only for RP2A Enhanced/RP4A Enhanced CEE Platform
					D1		USB, Bluetooth 5.0 + LE & WiFi 802.11a/b/g/n/ac - North America	Only for RP2F/RP4F Honeywell Printer Edge Platform
					D2		USB, Bluetooth 5.0 + LE & WiFi 802.11a/b/g/n/ac - Rest Of World	Only for RP2F/RP4F Honeywell Printer Edge Platform
					0		Battery 2,500mAh	RP2 only
					2		Battery 4,900mAh	RP4 only
					D		Disinfectant Ready Housing	
					E		No Battery	Includes Battery Eliminator



ID = Inside Diameter
OD = Outside Diameter

RPf SERIES MEDIA

Specifications

The RPf Series printer prints 25.4 mm (1 in) to 104.1 mm (4.1 in) labels/receipts and can accommodate a wide variety of media, including the heavy stock necessary for hang tags and specialty label needs.

Media Roll Minimum Width

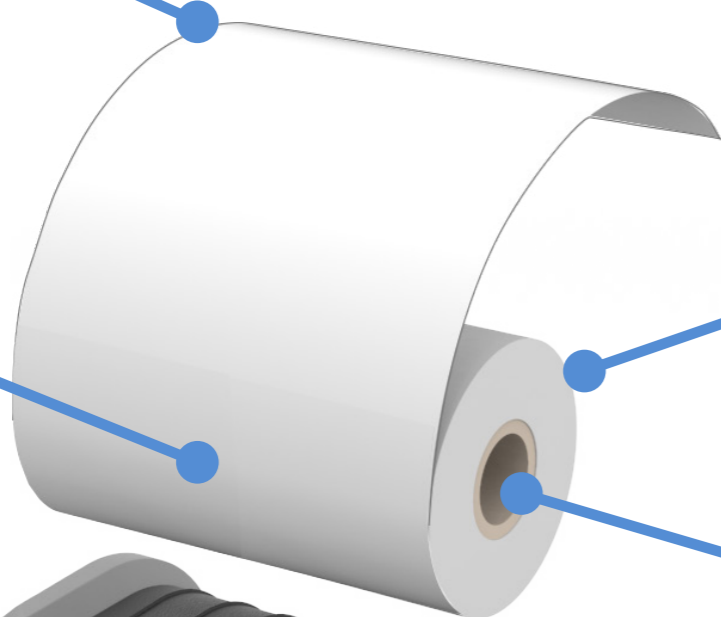
51 mm (2.0 in)

Media Roll Maximum Width

111 mm (4.4 in)

Maximum Print Width

203 dpi: 104 mm (4.1 in)



Media Roll Maximum OD

58 mm (2.25 in)

Media Roll Core ID

10.16 mm (0.4 in)

19 mm (0.75 in)

25.4 mm (1.0 in)



RP4f 4-INCH

Media Roll Minimum Width

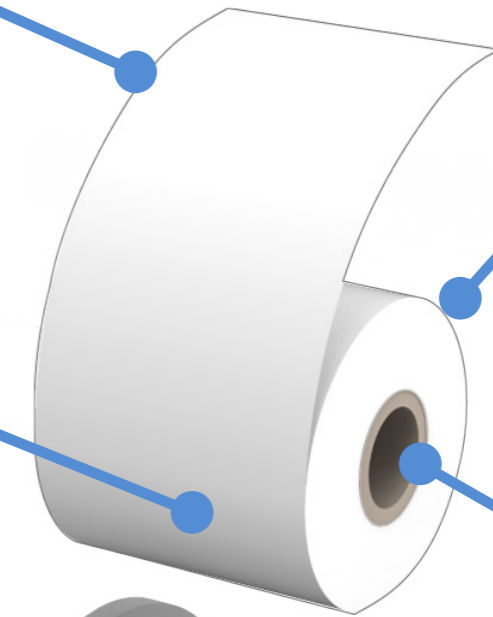
25 mm (1.0 in)

Media Roll Maximum Width

57 mm (2.25 in)

Maximum Print Width

203 dpi: 48 mm (1.89 in)



Media Roll Maximum OD

58 mm (2.25 in)

Media Roll Core ID

10.16 mm (0.4 in)

19 mm (0.75 in)

25.4 mm (1.0 in)



RP2f 2-INCH

RPf SERIES SOFTWARE

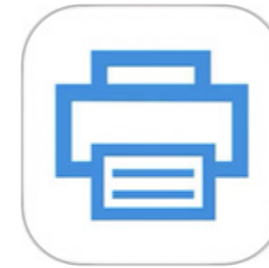
PrintSet MC

PrintSet MC is an application for configuring Honeywell printers from an iOS or Android device. The application communicates with the printer via Bluetooth or Network connection, reading and writing printer configuration information. PrintSet MC is compatible with all Honeywell Printer Edge platform printers including RP2f, RP4f, PD45, PD45S, PM45, PM45C, PX940, PX45, PX65 and others.



Near Field Communications (NFC)

Align NFC logos to touch pair via Bluetooth between your smartphone and RPf printer.



PrintSet MC Features

- Communications: Configure Serial, Ethernet, WiFi, Bluetooth
- Printing: Set Media Settings
- System Settings: Languages, Services, Display
- Install Configurations: XML Settings, Fonts, Images
- Print test print scripts for any supported print language
- Update Firmware
- Print Quality Wizard
- Wireless Setup Wizard



Bluetooth

Quickly setup your WiFi and printer settings over Bluetooth.



HONEYWELL EDGE SERVICES

RPf Series – Repair Services

Honeywell Edge Services give you the confidence of having leading-class technologies combined with service and support plans that are designed to keep you operational for longer.

For a full description of maintenance services, including terms and conditions, please see <https://automation.honeywell.com/us/en/services/productivity-solutions/support-services/maintenance-services>

Gold Repair Services – 3 Year

The most flexible contract in the industry. The Edge Services Gold Support contract allows you to select the right coverage for your organization, including 5-Day Depot Repairs and:

Service Overview

- Repair or replacement of damaged components, wear and tear, and accidental damage.
- Flexibility to add any Add-On Service

PART NUMBER	DESCRIPTION
SVCRP2-SG3N	RP2, Edge Service, GOLD Maintenance Contract, 5 Day Turnaround, 3 Year , New Contract, includes replacement Printheads and Platen Rollers
SVCRP4-SG3N	RP4, Edge Service, GOLD Maintenance Contract, 5 Day Turnaround, 3 Year , New Contract, includes replacement Printheads and Platen Rollers

Add-On Battery Replacement Service

Provides replacement batteries every 18 months after purchase.

ADD SVCBATTERY-PRN3	AddOn, Edge Service, Battery Service, Printer, 3 Year , 1 Replacement Battery over life of the contract.
----------------------------	-----------------------------------------------------------------------------------------------------------------

Add-On Accessory Replacement Service

Provides replacement cables, chargers or power supplies.

ADD SVCACC-PRN3	AddOn, Edge Service, Accessory Service , Printer, 3 Year
------------------------	-----------------------------------------------------------------

Add-On Device Replacement Service

Replacement devices should a device be damaged beyond repair.

ADD SVCREPLACE-PRN3	AddOn, Edge Service, Device Replacement, Printer, 3 Year
----------------------------	-----------------------------------------------------------------

Add-On Spare Management Service

Manages every aspect of your spare pool.

ADD SVCSPAREMGMT-PRN3	AddOn, Edge Service, Advanced Exchange, Printer, 3 Year . Customer owned spare pool, Minimum Purchase required, contact your local Honeywell Service Representative for more information.
------------------------------	--------------------------------------------------------------------------------------------------------------------------------------------------------------------------------------------------

Add-On 2-Day Turnaround Depot Upgrade

Upgrade your Gold Maintenance Contract from 5-Day to 2-Day turnaround at the repair depot.

ADD SVC2DAYDEPOT-PRN3	AddOn, Edge Service, 2-Day Depot Upgrade, 3-Year Agreement, Requires purchase of a 3 Year Gold Maintenance Contract.
------------------------------	-----------------------------------------------------------------------------------------------------------------------------

Platinum Repair Services – 3 Year

The Edge Services Platinum Support contract is the only total support contract in the industry today offering 2-Day Depot Repairs or Spare Pool Management with 3-year contract, that includes:

Service Overview

- Repair or replacement of damaged components
- SVCBATTERY-PRN3 - Battery replacement service
- SVCREPLACE-PRN3 - Replacement devices should a device be damaged beyond repair
- SVCACC-PRN3 - Accessory replacement service
- SVCSPAREMGMT-PRN3 - Spare pool management (optional, minimum quantity required)
- Telephone-based technical support

PART NUMBER	DESCRIPTION
SVCRP2-SP3N	RP2, Edge Service, PLATINUM, 2 Day Turnaround, 3 Year, New Contract includes replacement Printheads and Platen Rollers
SVCRP4-SP3N	RP4, Edge Service, PLATINUM, 2 Day Turnaround, 3 Year, New Contract includes replacement Printheads and Platen Rollers



HONEYWELL EDGE SERVICES

RPf Series – Repair Services

Honeywell Edge Services give you the confidence of having leading-class technologies combined with service and support plans that are designed to keep you operational for longer.

For a full description of maintenance services, including terms and conditions, please see <https://automation.honeywell.com/us/en/services/productivity-solutions/support-services/maintenance-services>

Gold Repair Services – 5 Year

The most flexible contract in the industry. The Edge Services Gold Support contract allows you to select the right coverage for your organization, including 5-Day Depot Repairs and:

Service Overview

- Repair or replacement of damaged components, wear and tear, and accidental damage.
- Flexibility to add any Add-On Service

PART NUMBER	DESCRIPTION
SVCRP2-SG5N	RP2, Edge Service, GOLD Maintenance Contract, 5 Day Turnaround, 5 Year , New Contract, includes replacement Printheads and Platen Rollers
SVCRP4-SG5N	RP4, Edge Service, GOLD Maintenance Contract, 5 Day Turnaround, 5 Year , New Contract, includes replacement Printheads and Platen Rollers

Add-On Battery Replacement Service

Provides replacement batteries every 18 months after purchase.

ADD SVCBATTERY-PRN5	AddOn, Edge Service, Battery Service, Printer, 5 Year , 2 Replacement Batteries over life of the contract.
----------------------------	-------------------------------------------------------------------------------------------------------------------

Add-On Accessory Replacement Service

Provides replacement cables, chargers or power supplies.

ADD SVCACC-PRN5	AddOn, Edge Service, Accessory Service , Printer, 5 Year
------------------------	-----------------------------------------------------------------

Add-On Device Replacement Service

Replacement devices should a device be damaged beyond repair.

ADD SVCREPLACE-PRN5	AddOn, Edge Service, Device Replacement, Printer, 5 Year
----------------------------	-----------------------------------------------------------------

Add-On Spare Management Service

Manages every aspect of your spare pool.

ADD SVCSPAREMGMT-PRN5	AddOn, Edge Service, Advanced Exchange, Printer, 5 Year . Customer owned spare pool, Minimum Purchase required, contact your local Honeywell Service Representative for more information.
------------------------------	--------------------------------------------------------------------------------------------------------------------------------------------------------------------------------------------------

Add-On 2-Day Turnaround Depot Upgrade

Upgrade your Gold Maintenance Contract from 5-Day to 2-Day turnaround at the repair depot.

ADD SVC2DAYDEPOT-PRN5	AddOn, Edge Service, 2-Day Depot Upgrade, 5-Year Agreement, Requires purchase of a 5 Year Gold Maintenance Contract.
------------------------------	-----------------------------------------------------------------------------------------------------------------------------

Platinum Repair Services – 5 Year

The Edge Services Platinum Support contract is the only total support contract in the industry today offering 2-Day Depot Repairs or Spare Pool Management with 5-year contract, that includes:

Service Overview

- Repair or replacement of damaged components
- SVCBATTERY-PRN5 - Battery replacement service
- SVCREPLACE-PRN5 - Replacement devices should a device be damaged beyond repair
- SVCACC-PRN5 - Accessory replacement service
- SVCSPAREMGMT-PRN5 - Spare pool management (optional, minimum quantity required)
- Telephone-based technical support

PART NUMBER	DESCRIPTION
SVCRP2-SP5N	RP2, Edge Service, PLATINUM, 2 Day Turnaround, 5 Year, New Contract includes replacement Printheads and Platen Rollers
SVCRP4-SP5N	RP4, Edge Service, PLATINUM, 2 Day Turnaround, 5 Year, New Contract includes replacement Printheads and Platen Rollers



HONEYWELL REPAIR SERVICES

RPf Series – Repair Services Coverage

For Best-In-Class Service



RP2f



RP4f

Warranty Cover Against Product Defect

BASIC Service

Gold Coverage:

- Accidental Damage
- Wear & Tear

Includes Replacement of:

- Platen Roller
- Printhead
- Belt Clip





Flexible GOLD Add-Ons ordered separately

- SVCACC-PRN3 Accessories
- SVCBATTERY-PRN3 Battery Replacement
- SVCREPLACE-PRN3 Device Replacement
- SVCSPAREMGMT-PRN3 Advanced Exchange

GOLD Service

Platinum Coverage

- Battery Replacement
- Coverage for Cables and Chargers
- Accessory Replacement

- Accidental Damage
- Device Replacement
- Wear & Tear



Battery
(3 Year – 1 replacement battery)
(5 Year – 2 replacement batteries)



Vehicle Dock



Chargers

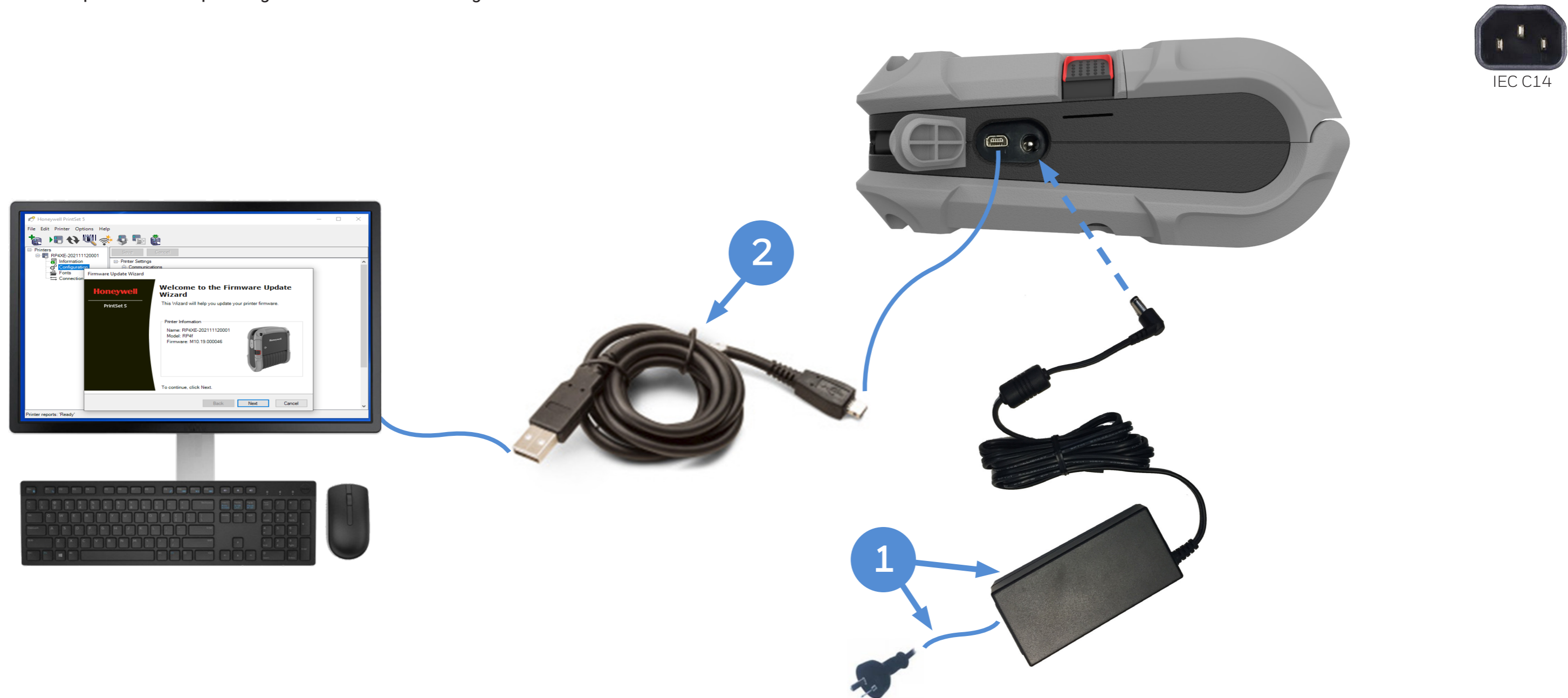
PLATINUM Service

MODEL	COVERAGE	PART NUMBER	DESCRIPTION
RP2f	BASIC	SVCRP2A-EXW3	RP2A, BASIC, 10-15 Day Turnaround, 3 Years (2 Year Factory Warranty + 1 Year Extended)
RP4f	BASIC	SVCRP4A-EXW3	RP4A, BASIC, 10-15 Day Turnaround, 3 Years (2 Year Factory Warranty + 1 Year Extended)
RP2f	GOLD	SVCRP2-SG3N	RP2, Edge Service, GOLD Maintenance Contract, 5 Day Turnaround, 3 Year, New Contract
RP4f	GOLD	SVCRP4-SG3N	RP4, Edge Service, GOLD Maintenance Contract, 5 Day Turnaround, 3 Year, New Contract
	ADD	SVCACC-PRN3	AddOn, Edge Service, Accessory Service , Printer, 3 Year.
	ADD	SVCBATTERY-PRN3	AddOn, Edge Service, Battery Service, Printer, 3 Year, 1 Replacement Battery over life of the contract.
	ADD	SVCREPLACE-PRN3	AddOn, Edge Service, Device Replacement, Printer, 3 Year
	ADD	SVCSPAREMGMT-PRN3	AddOn, Edge Service, Advanced Exchange, Printer, 3 Year. Customer owned spare pool, Minimum Purchase required.
RP2f	PLATINUM	SVCRP2-SP3N	RP2, Edge Service, PLATINUM, 2 Day Turnaround, 3 Year, New Contract
RP4f	PLATINUM	SVCRP4-SP3N	RP4, Edge Service, PLATINUM, 2 Day Turnaround, 3 Year, New Contract

RPf SERIES CHARGING AND COMMUNICATION

AC Charging and USB Configuration

Charging one RPf Series printer and setup/ configuration via PrintSet 5 Configuration Tool.



	PART NUMBER	REGION	DESCRIPTION
1	220515-100	NORTH AMERICA	AC Adapter for Charging with US plug (130063 IEC C13 AC Power Cord) for OC,MFte, RLe, RP mobile printers
OR	220516-100	EUROPE	AC Adapter for Charging with EU plug (586267 IEC C13 AC Power Cord) for OC,MFte, RLe, RP mobile printers
OR	220517-100	UNITED KINGDOM	AC Adapter for Charging with UK plug (32-2025-01 IEC C13 AC Power Cord) for OC,MFte, RLe, RP mobile printers
OR	220518-100	AUSTRALIA / NEW ZEALAND	AC Adapter for Charging with AU plug (510112-004 IEC C13 AC Power Cord) for OC,MFte, RLe, RP mobile printers
OR	220521-100	SWITZERLAND	AC Adapter for Charging with Swiss plug (32-2375-01 IEC C13 AC Power Cord) for OC,MFte, RLe, RP mobile printers
2	210304-100-SP		Cable, USB-A to Mini-B, 4

RPf SERIES CHARGING OPTIONS

Option 1 - Single Wall Mount Charger

Single printer settlement room or a depot mounting bracket enables a single charger to be mounted on the wall or as a desktop application. The printer may be charged in an organized manner with the charging dock removed from busy work areas. Compatible with both RP2f and RP4f mobile printers. Regional power supply needs to be ordered separately.



RP4 shown in the Wall Mount



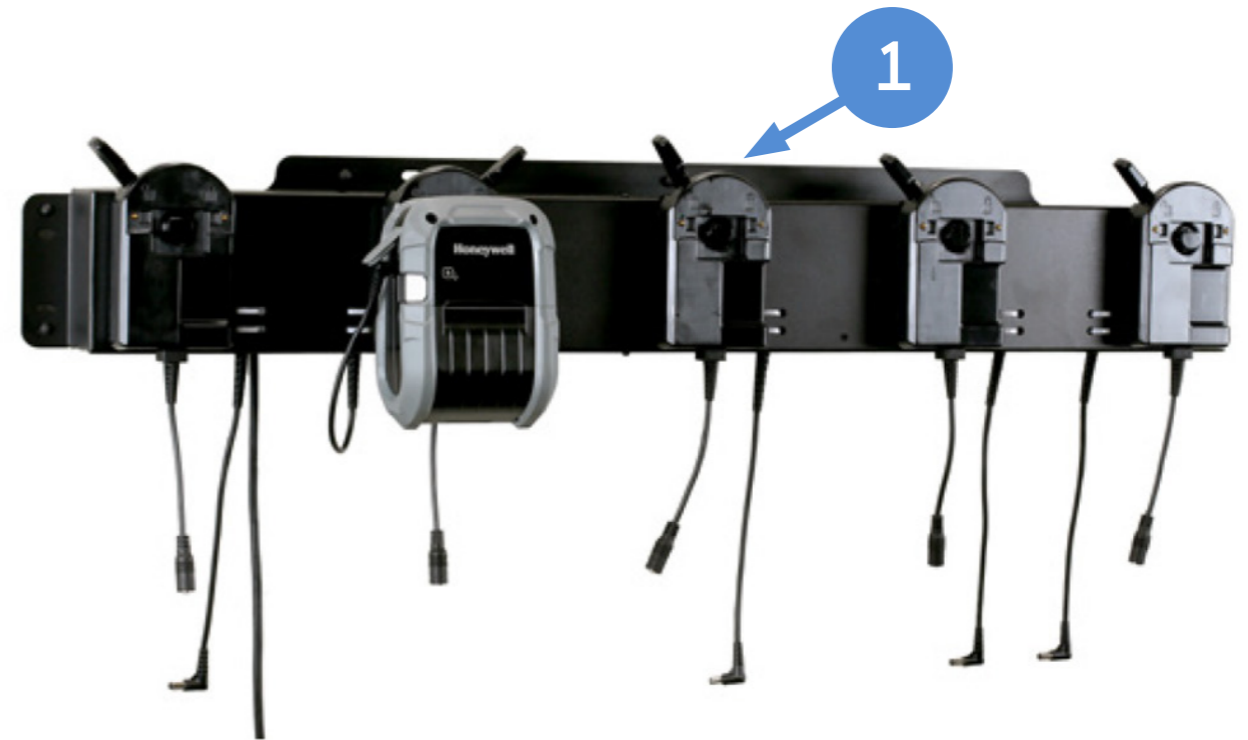
PART NUMBER

DESCRIPTION

1	229042-000	Charger with single Wall Adapter Plate Kit for RP2, RP4
2	220515-100	AC Adapter for Charging with US plug (IEC C13 AC Power Cord) for RP mobile printers
OR	220516-100	AC Adapter for Charging with EU plug (IEC C13 AC Power Cord) for RP mobile printers
OR	220517-100	AC Adapter for Charging with UK plug (IEC C13 AC Power Cord) for RP mobile printers
OR	220518-100	AC Adapter for Charging with AU plug (IEC C13 AC Power Cord) for RP mobile printers
OR	220521-100	AC Adapter for Charging with Swiss plug (IEC C13 AC Power Cord) for RP mobile printers

Option 2 - Multiple Wall Charger

Multi-charger settlement room or a depot mounting bracket enables up to five RPf printers to be mounted on the wall or as a desktop application. They may be charged in an organized manner with the charging dock. The power supply is integrated, only a regional power cord needs to be ordered.



PART NUMBER

DESCRIPTION

1	229043-000	Multi charger 5-up Settlement Room Kit for RP2, RP4 Includes Power Supply. IEC C13 AC Power Cord must be ordered separately.
	**	IEC C13 AC Power Cord – See Page 19 for Country Specific Power Cords

RPf SERIES CHARGING OPTIONS

Option 3 – RP2f Quad Charger

The four-bay charging dock charges up to four RP2f mobile printers. Power supply is included.



RP2 Quad Charger with one printer charging.



RP2 Quad Charger with four printers charging.

PART NUMBER

DESCRIPTION

1 RP2-QD-0

RP2 Quad Dock - Kit includes Dock and Power Supply
IEC C13 Power cord must be ordered separately.

**

IEC C13 AC Power Cord – See Page 19 for Country Specific Power Cords

Option 4 – RP4f Quad Charger

The four-bay charging dock charges up to four RP4f mobile printers. Power supply is included.



RP4 Quad Charger with one printer charging.



RP4 Quad Charger with four printers charging.

PART NUMBER

DESCRIPTION

1 RP4-QD-0

RP4 Quad Dock - Kit includes Dock and Power Supply,
IEC C13 Power cord must be ordered separately.

**

IEC C13 AC Power Cord – See Page 19 for Country Specific Power Cords

RP2f SERIES VEHICLE INSTALL

Option 1 - RP2f Portable Vehicle Dock Charger

Portable Vehicle Dock with RAM mounting hardware included.

Power Option: Connects to vehicle accessory port / cigarette lighter port)



RP2 shown in the Vehicle Mount



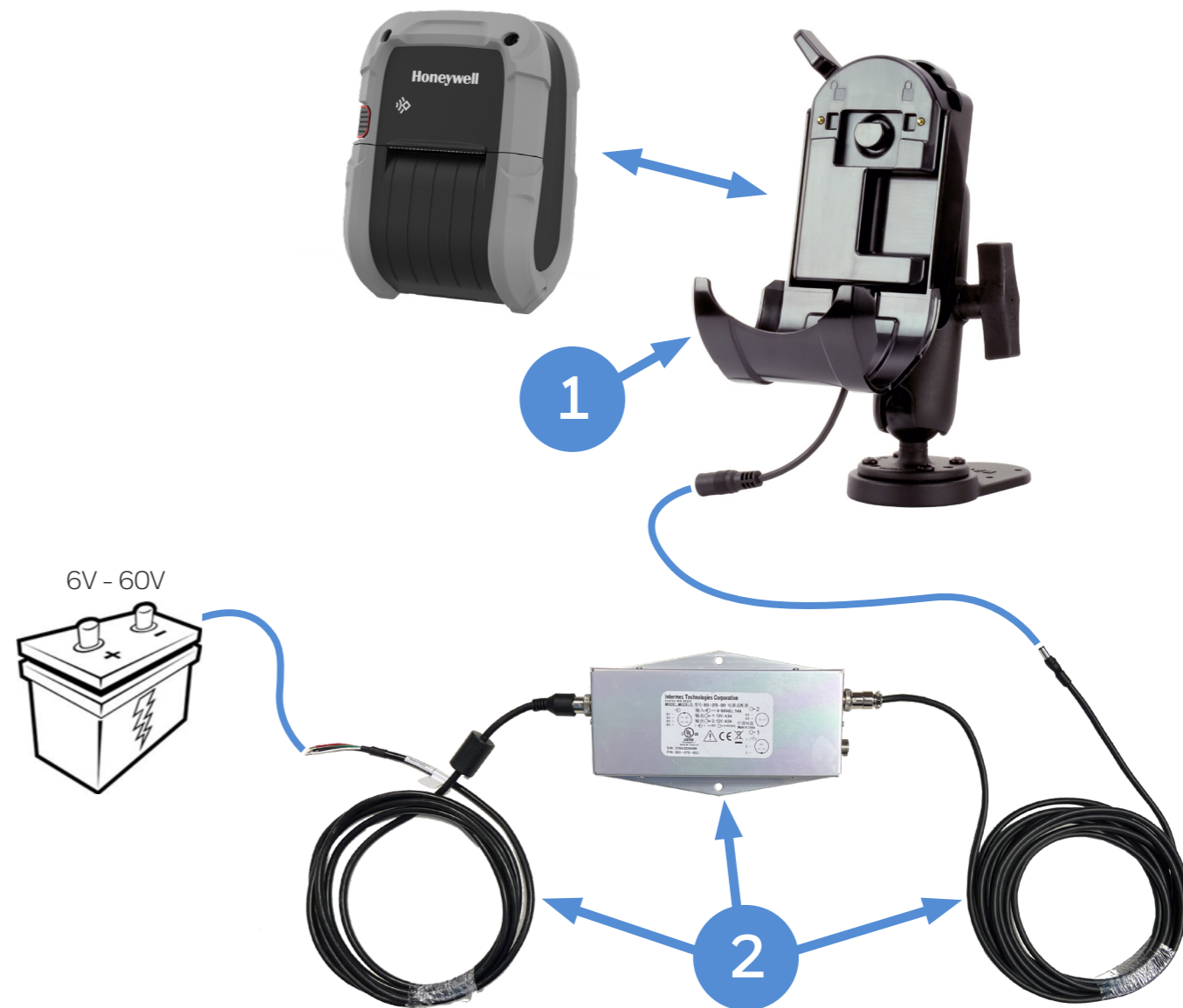
	PART NUMBER	DESCRIPTION
1	229045-000	RP2 Vehicle-Mounted Bracket Charger (RAM mount included)
2	510116-001-SP	Cigarette lighter power cable. 12V Only

Option 2 - RP2f Fixed Vehicle Dock Charger

Best used when the vehicle input voltage varies, 12, 24, 36, 48V.

Product Update Notice (PUN) 23-15 issued APR-2023

220282-000 has been updated to a new DC converter, see PUN for more details.



	PART NUMBER	DESCRIPTION
1	229045-000	RP2 Vehicle-Mounted Bracket Charger (RAM mount included)
2	220282-000	RP, RLe, MFte DC/DC Voltage converter (6V-60V)

RP4f SERIES VEHICLE INSTALL

Option 1 - RP4f Portable Vehicle Dock Charger

Portable Vehicle Dock with RAM mounting hardware included.

Power Option: Connects to vehicle accessory port / cigarette lighter port)



	PART NUMBER	DESCRIPTION
1	229044-000	RP4 Vehicle-Mounted Bracket Charger (RAM mount included)
2	510116-001-SP	Cigarette lighter power cable. 12V Only

Option 2 - RP4f Fixed Vehicle Dock Charger

Best used when the vehicle input voltage varies, 12, 24, 36, 48V.

Product Update Notice (PUN) 23-15 issued APR-2023

220282-000 has been updated to a new DC converter, see PUN for more details.



	PART NUMBER	DESCRIPTION
1	229044-000	RP4 Vehicle-Mounted Bracket Charger (RAM mount included)
2	220282-000	RP, RLe, MFte DC/DC Voltage converter (6V-60V)

RP SERIES BATTERY OPTIONS

Option 1 - 4-Bay Battery Charger

Charge up to 4 batteries simultaneously

Supports Batteries: 50133975-001 - Battery, RP2e (2,500mAh)

50181461-001 - Battery, RP2e / RP2f (2,500mAh)

50166632-001 - Battery, RP2e / RP2f (2,500mAh)

550053-000 - Battery, RP4 (5,200mAh)

50180329-001 - Battery, RP4e / RP4f (4,900mAh)

50138010-001 - Battery, RP4e / RP4f (4,900mAh)

Discontinued JAN 2023

Discontinued DEC 2024

Discontinued JAN 2019

Discontinued DEC 2024



PART NUMBER

DESCRIPTION

1	220540-000	4-bay Smart Battery charger RP2/4.
2	50121667-001	Power Adapter,12V 7A, No Power Cord, (Requires IEC C13 AC Power Cord)
3	**	IEC C13 AC Power Cord - See Page 19 for Country Specific Power Cords

Option 2 - Battery Eliminator

For tabletop applications where the printer does not need a battery, use the battery eliminator accessory.

Product Update Notice (PUN) 2025

211289-000 is replaced by 211289-100



PART NUMBER

DESCRIPTION

1	211288-000	RP2 Battery Eliminator
2	211289-100	RP4 Battery Eliminator

RP SERIES BATTERY

Spare Battery Options

Charge up to 4 batteries simultaneously

50133975-001 - Battery, RP2e (2,500mAh)

Discontinued JAN 2023

50181461-001 - Battery, RP2e / RP2f (2,500mAh)

Discontinued DEC 2024

50166632-001 - Battery, RP2e / RP2f (2,500mAh)

550053-000 - Battery, RP4 (5,200mAh)

Discontinued JAN 2019

50180329-001 - Battery, RP4e / RP4f (4,900mAh)

Discontinued DEC 2024

50138010-001 - Battery, RP4e / RP4f (4,900mAh)



RP2 / RP2e
RP2Axxxxxxx

RP2f
RP2Fxxxxxxx



RP4
RP4Axxxx00x
RP4AxxxxB0x
RP4AxxxxC0x
RP4AxxxxC1x

RP4e
RP4AxxxxC2x
RP4AxxxxC3x

RP4f
RP4FxxxxB1x
RP4FxxxxD1x
RP4FxxxxD2x

	PART NUMBER	DESCRIPTION
1	50166632-001	RP2e/ RP2f Smart Battery with LED, 2,500 mAh
2	50138010-001	RP4e/RP4f Smart Battery with LED 4,900 mAh

ACCESSORIES

RP2f Environment Soft Case

Thermal soft case used in harsher environments to provide dust and cold protection. Compatible with Shoulder Strap, must be ordered separately.



PART NUMBER

DESCRIPTION

1	50134863-001	RP2 Environmental Soft Case. Shoulder strap not included, order 210302-000 separately
2	210312-000	Shoulder Strap

RP4f Environment Soft Case

Thermal soft case used in harsher environments to provide dust and cold protection. Compatible with Shoulder Strap, must be ordered separately.



PART NUMBER

DESCRIPTION

1	750336-000	RP4 Environmental Soft Case. Shoulder strap not included, order 210302-000 separately
2	210312-000	Shoulder Strap

ACCESSORIES

Consumables and Cables



PART NUMBER **DESCRIPTION**

210302-000 Shoulder Strap (Only compatible with RP4 models when connecting directly to the printer)



PART NUMBER **DESCRIPTION**

210305-000 Velcro Belt Mount (RL Style)



Rear View

Front View

PART NUMBER **DESCRIPTION**

280797-000 Standard Belt Clip, included in the box with both the RP Series and RL Series.



PART NUMBER **DESCRIPTION**

210323-000 HAND STRAP, METAL CLIP



PART NUMBER **DESCRIPTION**

510116-001-SP Cigarette lighter power cable. 12V Only



PART NUMBER **DESCRIPTION**

1-110501-00 Cleaning Card, 4.5"x6", box of 25 (use with RP4)

1-110101-00 Cleaning Card, 2"x6", box of 25 (use with RP2)

MISCELLANEOUS

AC Cords

Regional Power Cords



AC Power - C13 Type Connector

PART NUMBER	TYPE	DESCRIPTION
3013-1460-001	C13	AC Power Cord, 1.5m, Argentina
3013-1457-001	C13	AC Power Cord, 1.5m, Australia/ New Zealand
3013-1452-001	C13	AC Power Cord, 1.5m, Brazil
3013-1454-001	C13	AC Power Cord, 1.5m, Europe (EU)
3013-1456-001	C13	AC Power Cord, 1.5m, India
3013-1458-001	C13	AC Power Cord, 1.5m, Israel
3013-1455-001	C13	AC Power Cord, 1.5m, Korea
3013-1462-001	C13	AC Power Cord, 1.5m, South Africa
3013-1459-001	C13	AC Power Cord, 1.5m, UK
3013-1453-001	C13	AC Power Cord, 1.5m, USA

MISCELLANEOUS

Disclaimer

Disclaimer

Honeywell International Inc. (“HII”) reserves the right to make changes in specification and other information contained in this document without prior notice, and the reader should in all cases consult HII to determine whether any such changes have been made. The information in this publication does not represent a commitment on the part of HII.

HII shall not be liable for technical or editorial errors or omissions contained herein; nor for incidental or consequential damages resulting the furnishing, performance, or use of this material.

This document contains proprietary information that is protected by copyright. All rights are reserved. No part of this document may be photocopied, reproduced, or translated into another language with-out prior written consent of HII.

Web Address: www.honeywellaidc.com

The Bluetooth trademarks are owned by Bluetooth SIG, Inc., U.S.A and licensed to Honeywell.

Apple, iOS, iPod touch and iPhone are trademarks of Apple Inc., registered in the U.S. and other countries. App Store is a service mark of Apple Inc.

Android is a trademark or registered trademark of Google Inc. in the United States and/or other countries. Windows is a trademark or registered trademark of Microsoft Corporation.

Other product names mentioned in the manual may be trademarks of registered trademarks of their respective companies and are the property of their respective owners.

All rights reserved.

For more information

automation.honeywell.com

Honeywell Industrial Automation

855 S Mint St
Charlotte, NC 28202
800-582-4263
www.honeywell.com