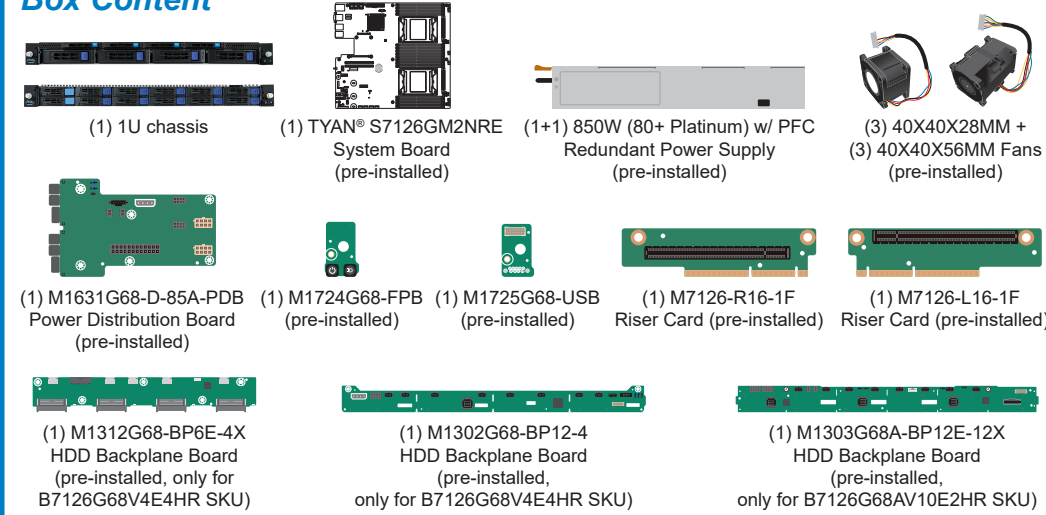


1 General Information

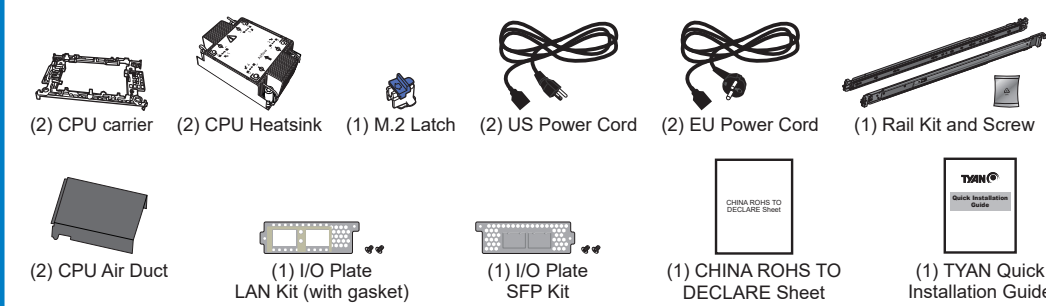
Read Me First

- The Barebone User's Manual is available for download from our Web site at <http://www.tyan.com>. Make sure to read all precautions and instructions before you start installing the server system.
- Refer all servicing to qualified personnel to avoid the risk of damage to the server system.
- Exercise normal ESD (Electrostatic Discharge) procedures during system integration. TYAN/MITAC recommends wearing gloves and an anti-static wrist strap to avoid possible damage to the equipment.
- Current processor socket design places the pins on the motherboard instead of the processor itself. Exercise caution when installing the processors as the manufacturer's warranty does not cover damage inflicted upon the motherboard, including damage to the CPU sockets.

Box Content



Accessories



Required Hardware Components

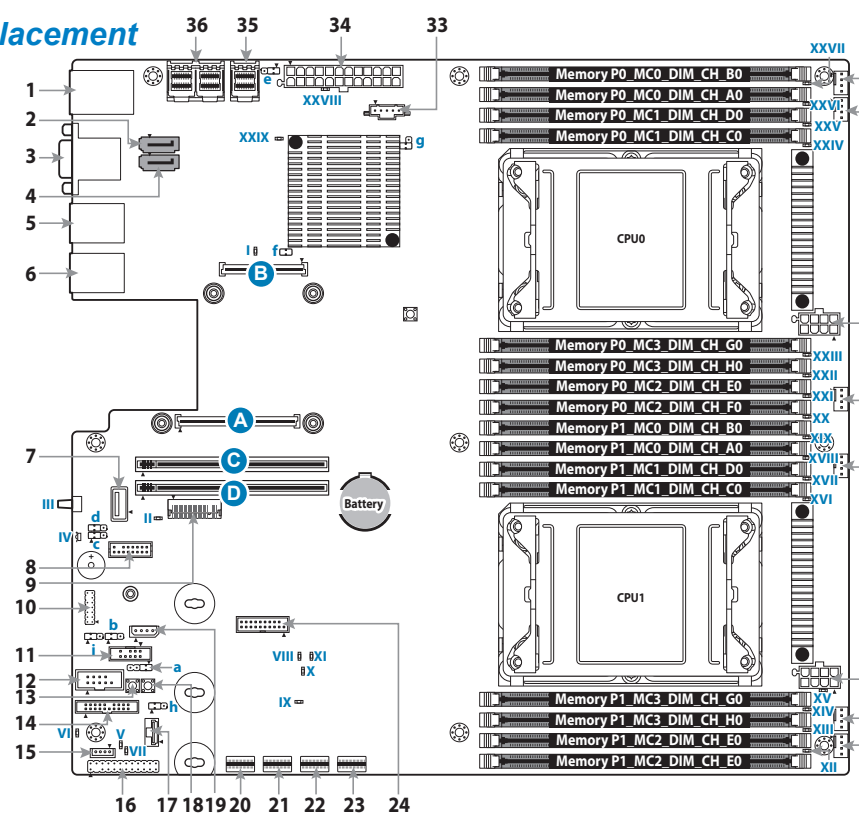
- Minimum Hardware Requirements**
To avoid integration difficulties and possible board damage, your system must meet the following minimum requirements:
- Processor: (2) 3rd Gen Intel Xeon Scalable processor with TDP 205W
 - Memory Type:
 - (16) DIMM slots support DDR4-3200/2933 RDIMM/LRDIMM
 - (8) memory channels per CPU
 - (1) DIMM slot per CPU channel
 - Hard Disk Drives:
 - (4) 2.5" hot-swap NVMe U.2 (7mm) + (4) hot-swap 3.5"/2.5" SAS/SATA devices (B7126G68V4E4HR SKU)
 - (2) 2.5" hot-swap SAS/SATA/NVMe + (10) 2.5" hot-swap SAS/SATA devices (B7126G68AV10E2HR SKU)
 - Rack Mount Kit (Industry 19" rack-mountable)
- NOTE:** Please refer to the product user guide posted on <https://www.tyan.com> for product details.

Tools Required



2 Motherboard Placement

Motherboard Placement



CONNECTORS

- | | | |
|---|--|--|
| 1 Dedicated IPMI port + USB3.0x2 (J112) | 14 FAN Pin Header (FAN_HD1) | 28 CPU1_FAN (CPU1_FAN) |
| 2 sSATA connector (sSATA4) | 15 Intel VROC RAID KEY Connector (J51) | 29 CPU0_FAN (CPU0_FAN) |
| 3 VGA + COM PORT (VGA_COM1) | 16 Front Panel Pin Header (FPIO_1) | 30 SSI 8-pin CPU0 Power Connector (PW1) |
| 4 sSATA connector (sSATA5) | 17 NVMe hot plug function (HDR_3) | 31 FRONT_FAN_2 (SYS_FAN_2) |
| 5 I210 LAN connector (LAN2) | 18 Reset BTN (RST_BTN1) | 32 FRONT_FAN_1 (SYS_FAN_1) |
| 6 I210 LAN connector (LAN1) | 19 IPMB Pin Header (IPMB_HD1) | 33 PSMI Pin Header (PSMI_HD1) |
| 7 Vertical Type A USB Connector (TYPEA_USB3) | 20 Vertical SLMISAS Connector (SLMISAS1) | 34 ATX Power Connector (24P) (PWWR1) |
| 8 TYAN Module Header (DBG_HD1) | 21 Vertical SLMISAS Connector (SLMISAS2) | 35 36-pin Vertical Mini SAS Connector (SATA 3.0 signals) (PCH_SSATA_0_3) |
| 9 M.2 22x80mm connector (NGFF1) | 22 Vertical SLMISAS Connector (SLMISAS3) | 36 72-pin Vertical Mini SAS Connector (SATA 3.0 signals) (PCH_SSATA_0_7) |
| 10 VGA Header (FPIO_VGA3) | 23 Vertical SLMISAS Connector (SLMISAS4) | |
| 11 sSATA SGPIO Pin Header for SATA 4-5 (sSATA_SGPIO1) | 24 FPB USB2.0/USB3.0 * 2 (USB3_FPIO1) | |
| 12 COM2 Header (HD_COM2) | 25 REAR_IO_FAN 1 (SYS_FAN_4) | |
| 13 Power BTN (PWR_BTN1) | 26 REAR_IO_FAN 2 (SYS_FAN_3) | |
| | 27 SSI 8-pin CPU1 Power Connector (PW2) | |

LEDS

- | | | |
|---|-------------------------------------|--|
| I BMC Debug LED (BMC_LED1) | IX CPU ERROR LED (CAT_LED1) | XX Memory Error LED-CPU0 (LED64) |
| II M.2 LED (LED75) | X CPU ERROR LED (ERR_LED0) | XXI Memory Error LED-CPU0 (LED63) |
| III REAR IO ID LED BTN (IDLED_BTN1) | XI CPU ERROR LED (ERR_LED2) | XXII Memory Error LED-CPU0 (LED66) |
| IV REAR IO LED (ID_LED1) | XII Memory Error LED-CPU1 (LED72) | XXIII Memory Error LED-CPU0 (LED65) |
| V On board BMC IPMI ALERT LED (IPMI_LED1) | XIII Memory Error LED-CPU1 (LED71) | XXIV Memory Error LED-CPU0 (LED61) |
| VI BMC Heartbeat LED (BMC_LED4) | XIV Memory Error LED-CPU1 (LED74) | XXV Memory Error LED-CPU0 (LED62) |
| VII On board HDD Active LED (HDD_LED1) | XV Memory Error LED-CPU1 (LED73) | XXVI Memory Error LED-CPU0 (LED59) |
| VIII CPU ERROR LED (ERR_LED1) | XVI Memory Error LED-CPU1 (LED69) | XXVII Memory Error LED-CPU0 (LED60) |
| | XVII Memory Error LED-CPU1 (LED70) | XXVIII PSU_ALERT_N LED (PSMI_LED1) |
| | XVIII Memory Error LED-CPU1 (LED67) | XXIX Platform RESET LED (SYS_RST_LED1) |
| | XIX Memory Error LED-CPU1 (LED68) | |

SLOTS

- | | | |
|---------------------------|--------------------------------|------------------------------------|
| A OCP A Slot (J28) | a PC BEEP Jumper (J120) | e ME Recovery Jumper (J113) |
| B OCP B Slot (J31) | b PSU Throttling jumper (J125) | f Select PECL to BMC or PCH (J133) |
| C Mini PCIe SLOT x32 (J3) | c BMC COM PORT jumper (J118) | g Security Override Jumper (J114) |
| D Mini PCIe SLOT x32 (J4) | d BMC COM PORT jumper (J119) | h System reset jumper (J136) |
| | | i SMBus select jumper (3PHD8) |

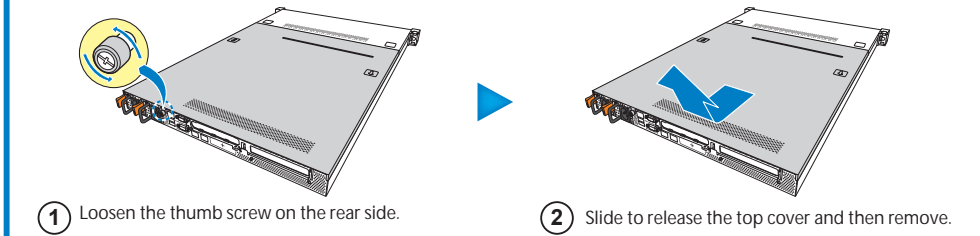
3 System Installation

Open the Chassis

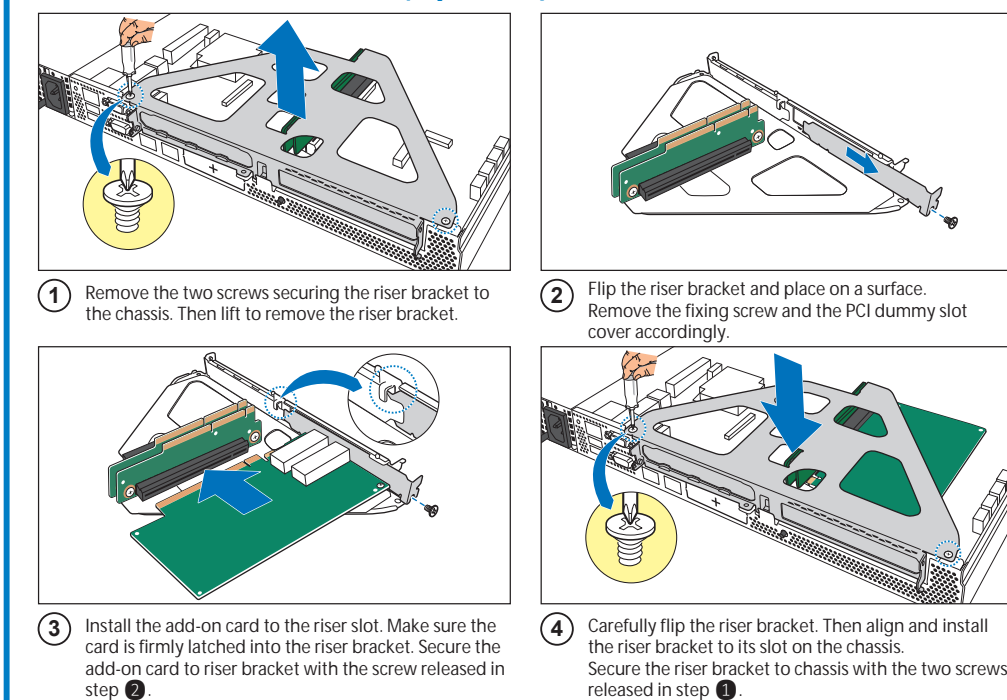
Preparing the Chassis

Read normal ESD (Electrostatic Discharge) procedures.

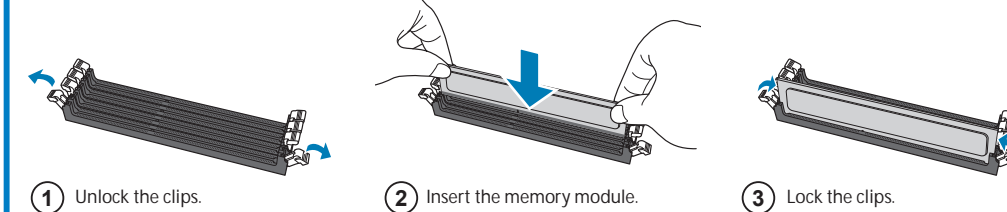
Place your TYAN® Server Chassis on a flat anti-static surface to perform the following integration procedures. Read ESD procedures before reaching inside to install components.



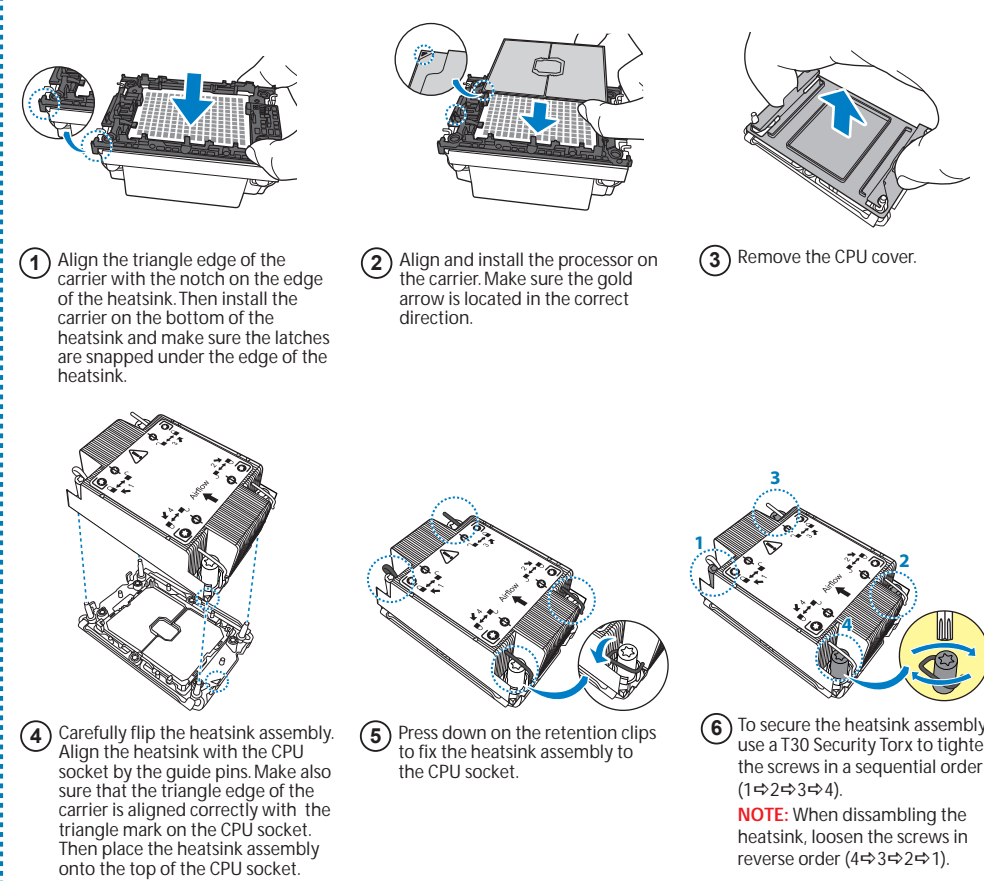
Install the Add-On Card (Optional)



Install the Memory

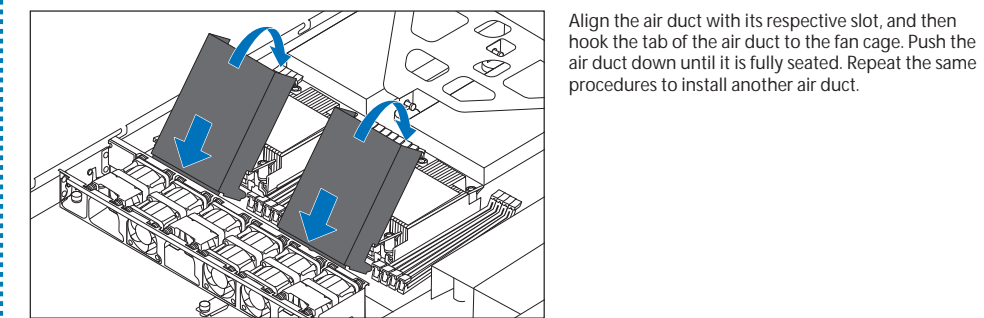


Install the Processor

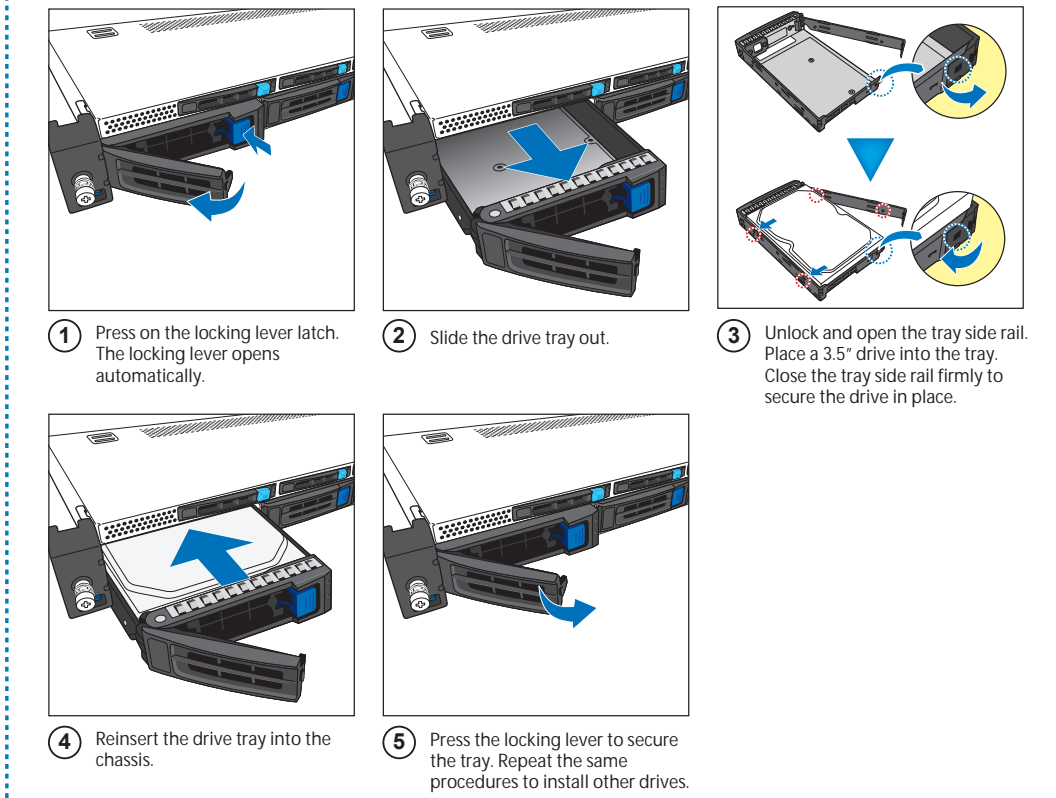


NOTE: A new heatsink comes with pre-applied thermal grease. Once the heatsink has been removed from the processor, you need to clean the processor and heatsink using an alcohol solvent. Then apply new thermal grease before reinstalling the heatsink.

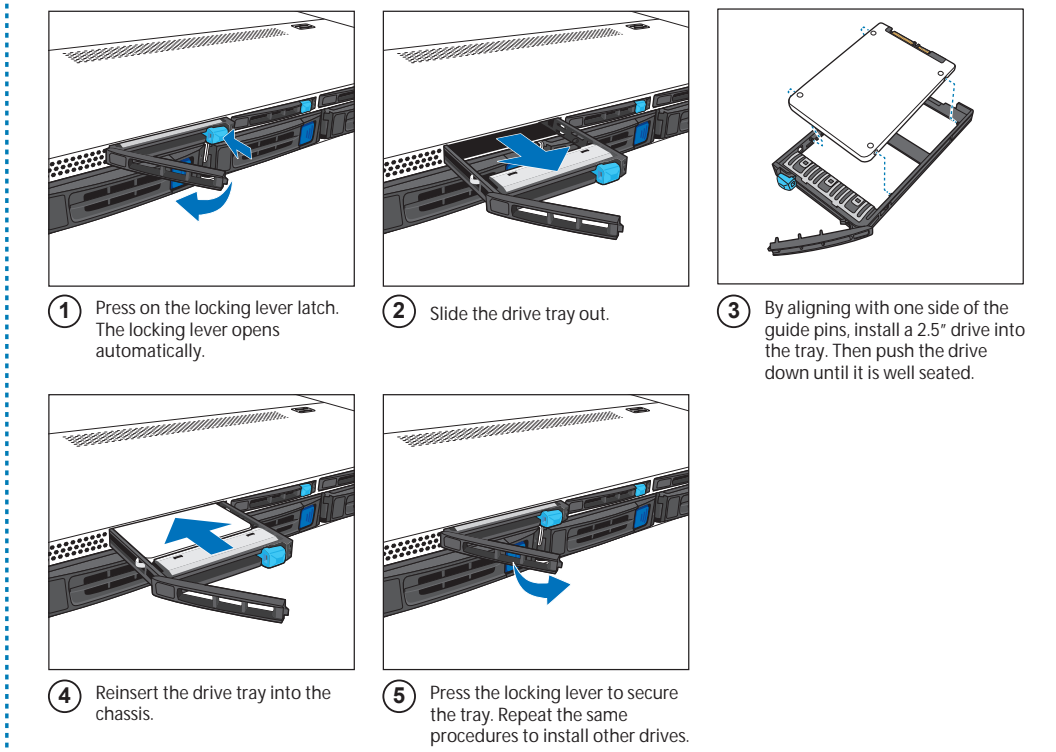
Install the Air Ducts



Install the Hard Disk Drives (3.5") for B7126G68V4E4HR SKU

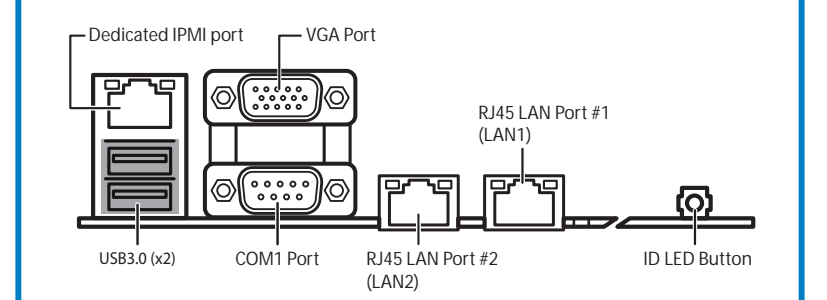


Install the Hard Disk Drives (2.5" 7mm) for B7126G68V4E4HR SKU



4 I/O Ports

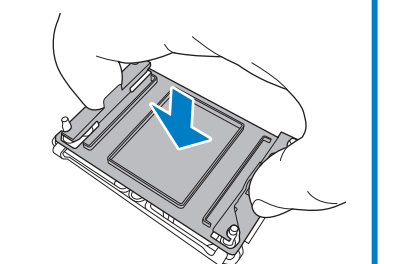
Locate the External I/O Port



5 Caution

DOA/RMA Reminder

NOTE: Please save and replace the CPU cover when returning the server board for service.



Install the Hard Disk Drives (2.5") for B7126G68AV10E2HR SKU

