







**SEEN IN THIS PHOTO:**

**RAM-GDS-DOCK-D2C-NDU**

GDS® Desktop Dock with USB Type-C for Next Gen IntelliSkin®

**RAM-GDS-HUB-TYPEC-02**

GDS® Hub™ With USB Type-C For Desktop

**RAM-GDS-SKIN-SAM74-NG**

IntelliSkin® Next Gen for Samsung Tab Active3

## TABLE OF CONTENTS

### 04 WHAT IS GDS®?

---

### 05 HOW IT WORKS

05 GDS® TECH™

---

### 07 GDS® ECOSYSTEM™

07 TURN TO DISTINCTIVE GDS® GREEN™ FOR ANY VERTICAL

---

### 09 INTELLISKIN® & INTELLISKIN® NEXT GEN

---

### 13 GDS® TOUGH-DOCK™ & GDS® COOL-DOCK™

---

### 19 BUILD YOUR OWN GDS® TOUGH-DOCK™ & GDS® COOL-DOCK™

---

### 21 SINGLE & DUAL PERIPHERAL SUPPORT

---

### 23 UNIVERSAL VEHICLE DOCKS

23 TABLET DOCKS FOR INTELLISKIN® NEXT GEN

25 GDS® VEHICLE PHONE DOCKS





27	<b>GDS® DESKTOP DOCKS</b>
29	<b>MULTI-PORT CHARGING DOCKS</b>
31	<b>GDS® SLIDE DOCK™</b>
33	<b>PHONE CABINET MODULE</b>
35	<b>GDS® ERGO™</b>
37	<b>DESKTOP EXPERIENCE ON THE GO</b>
39	<b>GDS® VIEW™</b>
41	<b>GDS® TOUGH-HUB™</b>
42	<b>GDS® ECOSYSTEM™</b>
43	<b>GDS® KEYBOARD™</b>
45	<b>GDS® AUDIO™</b>
47	<b>GDS® CHARGE™</b>
49	<b>POWER DELIVERY DOCKS</b>
51	<b>BUNDLES</b>
53	<b>GDS® VEHICLE DOCKS™</b>
53	<b>FUTURE PROOF</b>
55	<b>LEGACY GDS® &amp; INTELLISKIN® PRODUCTS</b>



**SEEN IN THIS PHOTO:**

---

**RAM-GDS-SKIN-SAM62-NG**

IntelliSkin® Next Gen for Samsung Tab Active2

**RAM-GDS-DOCKL-V9-OMT1U**

GDS® Type-C Vehicle Dock for IntelliSkin® Next Gen Tablets

**RAM-101U-B**

RAM® Universal Double Ball Mount with Two Round Plates







## NATIONAL PRODUCTS INC. (NPI)

Introduced in 1995, National Products Inc. (NPI) quickly became the leading manufacturer of rugged and versatile mounting solutions. RAM® Mounts has grown to offer approximately 5,000 modular components—the most innovative product line of its kind for nearly any application and device, including phones, tablets, GPS systems, laptops, marine electronics, printers, radios, and much more.

In addition to RAM® Mounts, NPI is also the creator of award-winning IntelliSkin® sleeves and GDS® Technology™ products. IntelliSkin® sleeves ruggedize a wide range of consumer phones and tablets, while the GDS® Ecosystem™ provides users the ability to securely charge, dock, and sync devices in the most demanding environments. Backed by more than 400 employees, NPI is proudly located in Seattle, Washington in the same neighborhood where the company was started.

## WHAT IS GDS®?

### ALWAYS PROTECTED. ALWAYS CONNECTED.® WITH GDS® TECHNOLOGY™

It's not just a tagline—it's a promise. When you see the distinctive, recognizable GDS® Green™ color while shopping for chargers, docks, and skins, you know you can count on quality and reliability.

The GDS® platform provides protection, charging, and data sync capabilities across a wide range of phones and tablets, making it a perfect solution for business applications like agriculture, fleet transportation, material handling, retail, and much more.

With GDS® Compatible™ IntelliSkin® protective sleeves and GDS® Tech™ pogo pin technology-enabled docks and accessories, simplify the process of upgrading devices while taking advantage of a standardized charging ecosystem.





**SEEN IN THIS PHOTO:**

**RAM-GDS-SKIN-SAM54-NG**

IntelliSkin® Next Gen for Samsung  
Tab Active Pro

**RAM-GDS-DOCKLF-SAM54CU**

Locking GDS® Cool-Dock™ with USB Type-C  
for Samsung Tab Active Pro

**RAM-VB-138**

RAM® No-Drill™ Vehicle Base for '05-21  
Toyota 4Runner & Tacoma

**RAM-VP-SW1-89**

RAM® Tele-Pole™ with 8" & 9" Poles, Double  
Swing Arms & Round Plate



# HOW IT WORKS

## GDS® TECH™

The GDS® platform provides protection, charging, and data sync capabilities across a wide range of phones and tablets, making it a perfect solution for fleet transportation. With GDS® Compatible™ IntelliSkin® protective sleeves, GDS® Docks™, and GDS® Ecosystem™ accessories, simplify the process of scaling and upgrading devices while taking advantage of a standardized charging and data transfer ecosystem.

1

**SELECT YOUR INTELLISKIN®  
FOR YOUR DEVICE**

2

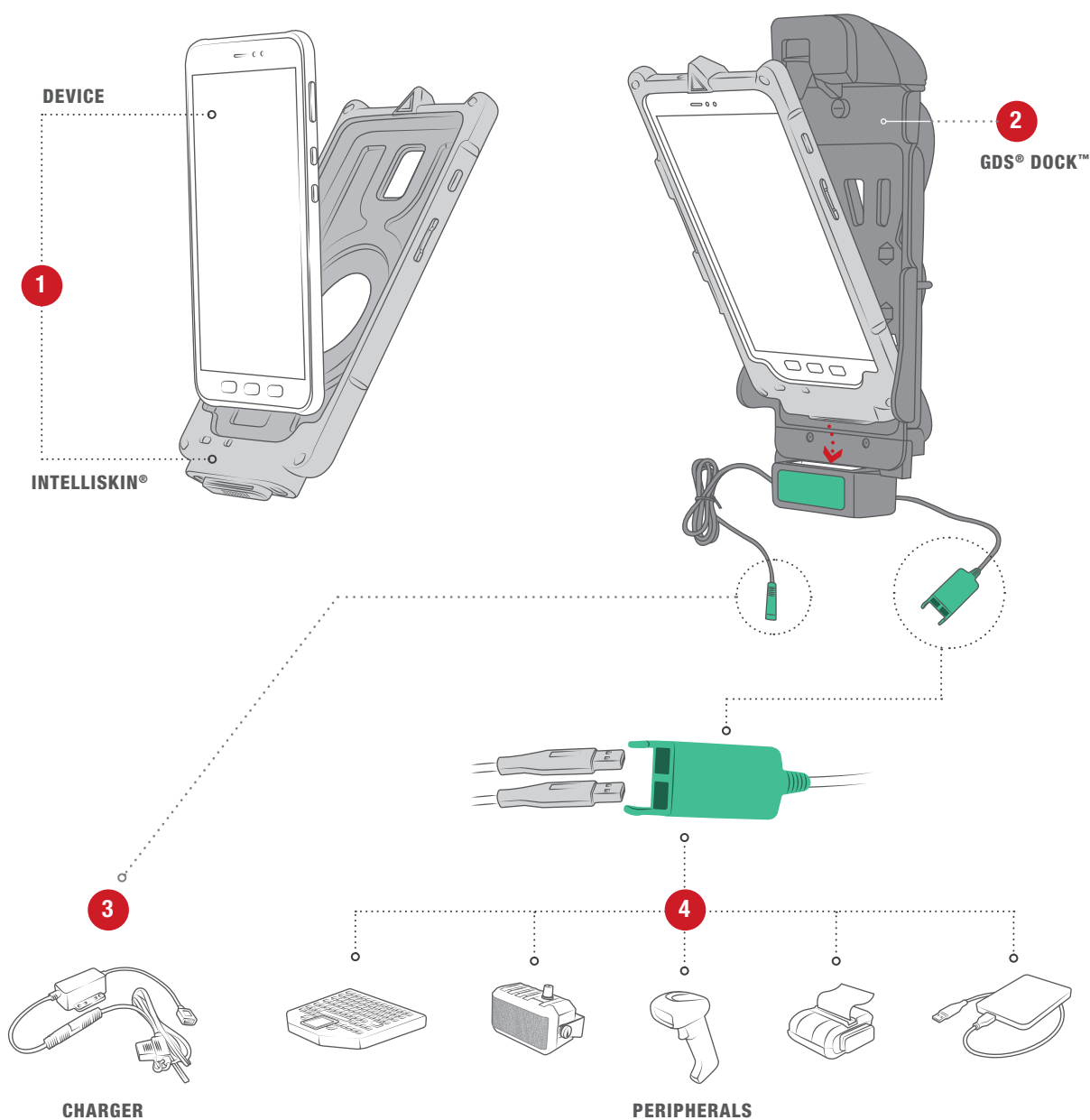
**SELECT YOUR GDS® DOCK™  
FOR YOUR INTELLISKIN®**

3

**SELECT YOUR  
CHARGER**

4

**ADD YOUR  
PERIPHERALS**







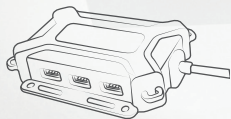
## **GDS® ECOSYSTEM™**

### **TURN TO DISTINCTIVE GDS® GREEN™ FOR ANY VERTICAL**

The GDS® Ecosystem™ offers everything to keep your devices protected, connected, and charged in nearly any application. Ruggedized GDS® Technology™ pogo pins ensure compatibility across IntelliSkin® sleeves and GDS® Docks™, adapters, chargers, keyboards, speakers, monitors, and more. And most products in the GDS® Ecosystem™ are RAM® Mounts Compatible™, so you can rely on the RAM® double ball and socket system for adjustability, durability, and vibration damping.



1	Multi-Port Charging Docks .....	P. 27
2	GDS® Desktop Docks .....	P. 26
3	GDS® Vehicle Phone Docks .....	P. 24
4	GDS® Hand-Stand™ .....	P. 34
5	GDS® View™ Mobile Display Monitor .....	P. 38
6	GDS® Tough-Hub™ .....	P. 45
7	GDS® Audio™ Amplifier Speaker .....	P. 40
8	GDS® Vehicle Phone Docks .....	P. 24
9	GDS® Keyboard™ Rugged USB Keyboard .....	P. 42



With the GDS® Tough-Hub™, keep a wide range of devices, docks, and peripherals charged and connected in nearly any vehicle. Each GDS® Tough-Hub™ includes numerous ports—USB, HDMI, RJ45, and more.



## VERTICALS WE SERVE



Agriculture



Aviation



Construction



Field Service



Healthcare



Government



Material Handling



Public Safety



Retail



Transportation



**SEEN IN THIS PHOTO:**

**RAM-GDS-SKIN-SAM54-NG**

IntelliSkin® Next Gen for Samsung Tab Active Pro

**RAM-GDS-SS1U**

GDS® Shoulder Strap Accessory for IntelliSkin® Products





# INTELLISKIN® & INTELLISKIN® NEXT GEN

IntelliSkin® is a protective sleeve for phones and tablets featuring GDS® Tech™ with pogo pin technology and military-grade drop protection. With an integrated GDS® connector molded directly into each skin and ruggedized docking contacts on each skin's exterior, IntelliSkin® is designed to extend the life of devices by preventing damage to the charging port from repetitive docking. IntelliSkin® Next Gen sleeves feature flat docking contacts that are easier to clean, as well as a design that combines the hard plastic shell with soft, shock-absorbing rubber.



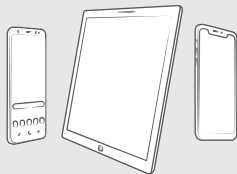
**RAM-GDS-SKIN-SAM54-NG**  
IntelliSkin® Next Gen for Samsung Tab Active Pro

## FEATURES



### DROP PROTECTION

Having passed rigorous military-grade spec tests for withstanding shock and impact.



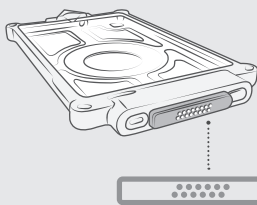
### UNIVERSAL DOCKING

Supports various phones and tablets including Samsung and Apple.



### PERIPHERAL ENABLEMENT

Secure your device and peripherals in any rugged environment; on site or on the go.



### POGO PIN TECHNOLOGY

Protects your device ports from constant plugging and unplugging.



**RAM-GDS-SKIN-SAM67-NG**  
IntelliSkin® Next Gen for Samsung Tab A 8.4 SM-T307



**RAM-GDS-SKIN-SAM39**  
IntelliSkin® for Samsung Galaxy S9



**PHONES**

MAKE	MODEL	INTELLISKIN®
Samsung	Galaxy A10 SM-A105	RAM-GDS-SKIN-SAM56
	Galaxy A20	RAM-GDS-SKIN-SAM61
	Galaxy J3 (2018)	RAM-GDS-SKIN-SAM44
	Galaxy J7 (2018)	RAM-GDS-SKIN-SAM45
	Galaxy Note 9	RAM-GDS-SKIN-SAM42
	Galaxy S9	RAM-GDS-SKIN-SAM39
	Galaxy S10	RAM-GDS-SKIN-SAM46
	Galaxy S10+	RAM-GDS-SKIN-SAM48
	Galaxy S10e	RAM-GDS-SKIN-SAM47
	Galaxy S20 5G	RAM-GDS-SKIN-SAM69
	Galaxy S20 FE 5G SM-G781	RAM-GDS-SKIN-SAM77
	Galaxy S20 Ultra 5G	RAM-GDS-SKIN-SAM71
	Galaxy S20+ 5G	RAM-GDS-SKIN-SAM70
	Galaxy XCover Pro	RAM-GDS-SKIN-SAM59

**TABLETS**

MAKE	MODEL	INTELLISKIN®
Apple	iPad 5th Gen	RAM-GDS-SKIN-AP15
	iPad 6th Gen	RAM-GDS-SKIN-AP15
	iPad 7th Gen	RAM-GDS-SKIN-AP31
	iPad 8th Gen	RAM-GDS-SKIN-AP31
	iPad Air 3	RAM-GDS-SKIN-AP16
	iPad Air 4	RAM-GDS-SKIN-AP32-NG
	iPad Air 4	RAM-GDS-SKIN-AP32-NG-LED
	iPad mini 4	RAM-GDS-SKIN-AP27
	iPad mini 5	RAM-GDS-SKIN-AP27
	iPad Pro 10.5	RAM-GDS-SKIN-AP16
	iPad Pro 11" 1st Gen	RAM-GDS-SKIN-AP32-NG
	iPad Pro 11" 1st Gen	RAM-GDS-SKIN-AP32-NG-LED
	iPad Pro 11" 2nd Gen	RAM-GDS-SKIN-AP32-NG
	iPad Pro 11" 2nd Gen	RAM-GDS-SKIN-AP32-NG-LED
	iPad Pro 12.9" 3rd Gen	RAM-GDS-SKIN-AP24
	iPad Pro 12.9" 4th Gen	RAM-GDS-SKIN-AP24-A
Samsung	Galaxy Tab A 10.1 SM-T510 & SM-T515	RAM-GDS-SKIN-SAM65-NG
	Galaxy Tab A 10.5 SM-T590 & SM-T597	RAM-GDS-SKIN-SAM66-NG
	Galaxy Tab A 8.0 (2018) SM-T387	RAM-GDS-SKIN-SAM63-NG
	Galaxy Tab A 8.0 (2018) SM-T387	
	Galaxy Tab A 8.0 (2019) SM-T290 & SM-T295	RAM-GDS-SKIN-SAM55-NG
	Galaxy Tab A 8.4 SM-T307	RAM-GDS-SKIN-SAM67-NG
	Galaxy Tab A 8.4 SM-T307	RAM-GDS-SKIN-SAM67-NG-LED
	Galaxy Tab A7 10.4	RAM-GDS-SKIN-SAM75-NG
	Galaxy Tab A7 10.4	RAM-GDS-SKIN-SAM75-NG-LED
	Galaxy Tab Active Pro	RAM-GDS-SKIN-SAM54-NG
	Galaxy Tab Active2	RAM-GDS-SKIN-SAM62-NG
	Galaxy Tab Active3	RAM-GDS-SKIN-SAM74-NG
	Galaxy Tab E 8.0 SM-T377 & SM-T378	RAM-GDS-SKIN-SAM64-NG
	Galaxy Tab S7 11" SM-T870	RAM-GDS-SKIN-SAM76-NG
	Galaxy Tab S7+ 12.4" SM-T970	RAM-GDS-SKIN-SAM78-NG


**SEE PAGE 55 FOR LEGACY DEVICES & INTELLISKINS®**



## INTELLISKIN® & INTELLISKIN® NEXT GEN CONTINUED

### RAM-GDS-SKIN-AP32-NG

IntelliSkin® Next Gen for Apple  
iPad Air 4 & iPad Pro 11" 1<sup>st</sup>  
& 2<sup>nd</sup> Gen



### RAM-GDS-SKIN-SAM78-NG

IntelliSkin® Next Gen for Samsung  
Tab S7+ 12.4" SM-T970

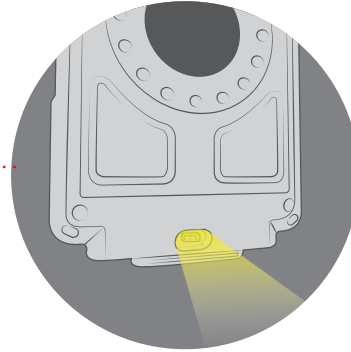


### RAM-GDS-SKIN-SAM63-NG-LED

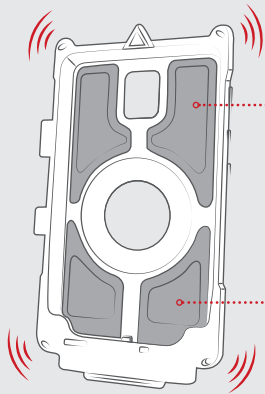
IntelliSkin® Next Gen with LED  
Light for Samsung  
Tab A 8.0 (2018)



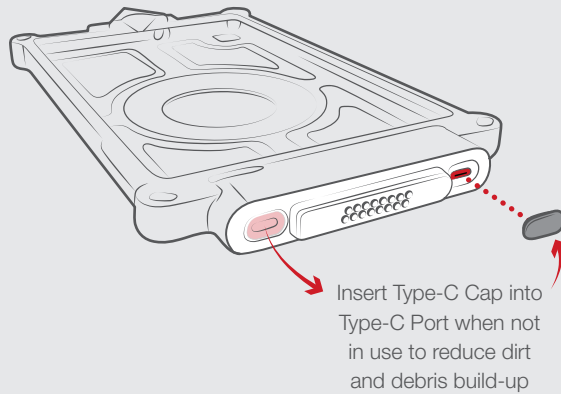
Built-in external  
LED Light with a  
button on the front of  
the IntelliSkin®



## FEATURES



Hard plastic  
shell with shock  
absorbing rubber

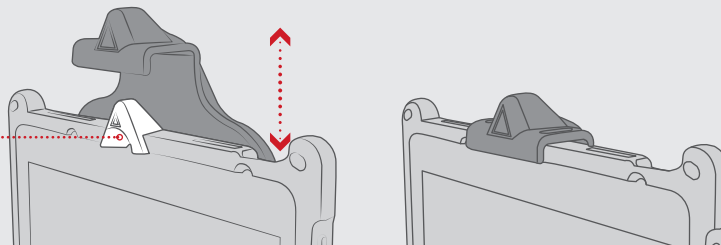
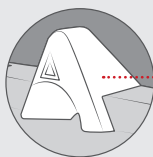


Insert Type-C Cap into  
Type-C Port when not  
in use to reduce dirt  
and debris build-up



Type-C Cap      Pogo Pins      Type-C Port

Positioning marker provides  
universal compatibility across  
IntelliSkin® Next Gen protective  
sleeves and GDS® top cups







#### SEEN IN THIS PHOTO:

**RAM-GDS-SKIN-SAM67-NG-LED**  
IntelliSkin® Next Gen with LED Light  
for Samsung Tab A 8.4 SM-T307

**RAM-GDS-DOCK-SAM67CU**  
GDS® Tough-Dock™ + Data Sync  
for Samsung Tab A 8.4 SM-T307

## GDS® TOUGH-DOCK™ & GDS® COOL-DOCK™

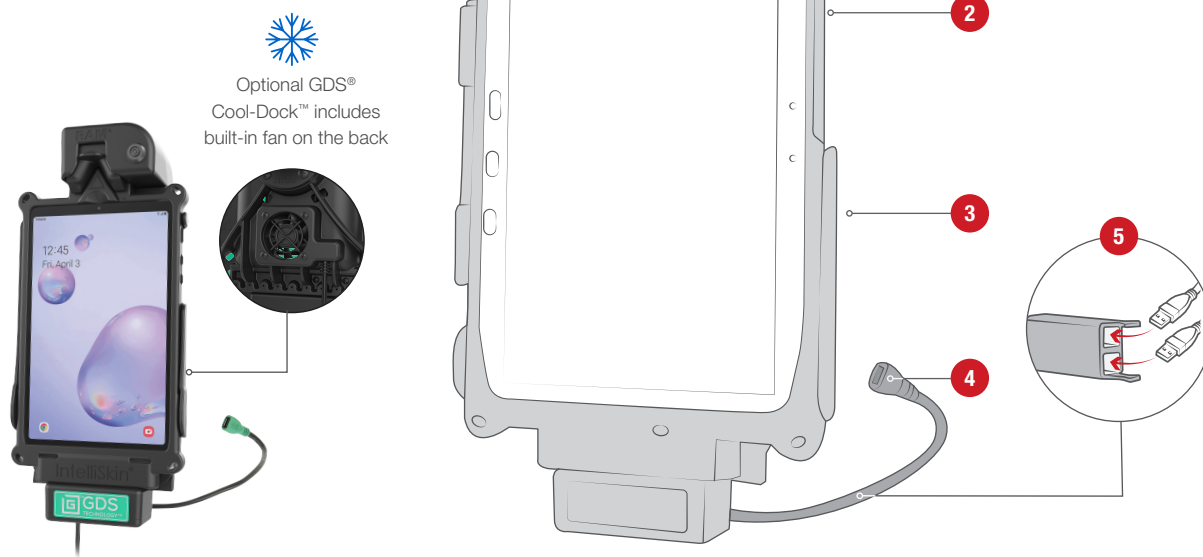
The GDS® Tough-Dock™ and GDS® Cool-Dock™ are the newest vehicle docks in the GDS® Tech™ line of vehicle docks designed to support select Samsung Galaxy tablets in an IntelliSkin® Next Gen protective sleeve for your fleet. Take advantage of a USB Type-C connector, supporting data sync and fast charging capabilities.



**RAM-GDS-DOCKLF-SAM54U**  
Locking GDS® Cool-Dock™ for  
Samsung Tab Active Pro



## GDS® TOUGH-DOCK™ & GDS® COOL-DOCK™ CONTINUED



### RAM-GDS-DOCKLF-SAM67U

Locking GDS® Cool-Dock™ for  
Samsung Tab A 8.4 SM-T307

## FEATURES

1



### LOCKING & NON-LOCKING

Secure your device for theft deterrence with a key locking option available for all GDS® Tough-Dock™ and GDS® Cool-Dock™ models.

2



### GDS® HAND-STAND™ COMPATIBLE

The GDS® Tough-Dock™ and GDS® Cool-Dock™ have integrated space for GDS® Hand-Stand™ attachments on the back of your IntelliSkin® Next Gen-wrapped device.

3



### BUILT-IN FAN

12-VDC Axial cooling fan with 2.2m long hardwire cable and SAE quick disconnect plugs available as an upgrade, or standard with all GDS® Cool-Dock™ models.

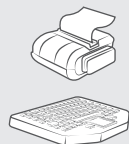
4



### STANDARD & HIGH SPEED POWER OPTIONS

All GDS® Tough-Dock™ and GDS® Cool-Dock™ models are available and support both mUSB and USB Type-C connections.

5



### CONNECT YOUR KEYBOARD & OTHER PERIPHERALS

Customize your mobile workstation with peripheral add-ons that help improve your workflow. Our GDS® Ecosystem™ makes it easy to choose different peripherals designed to work perfectly with the GDS® Tough-Dock™ and GDS® Cool-Dock™.



**GDS® TOUGH-DOCK™ & GDS® COOL-DOCK™ CONTINUED**



**RAM-GDS-SKIN-SAM74-NG**  
SAMSUNG TAB ACTIVE3



**RAM-GDS-SKIN-SAM62-NG**  
SAMSUNG TAB ACTIVE2

PART NUMBER	POWER mUSB	POWER USB TYPE-C + DATA SYNC	POWER USB TYPE-C	KEY- LOCKING	COOLING FAN GDS® COOL-DOCK™	SINGLE USB TYPE A PORT PERIPHERAL SUPPORT	DUAL USB TYPE A PORTS PERIPHERAL SUPPORT
RAM-GDS-DOCK-SAM62U	•						
RAM-GDS-DOCKF-SAM62U	•				•		
RAM-GDS-DOCKL-SAM62U	•			•			
RAM-GDS-DOCKLF-SAM62U	•			•	•		
RAM-GDS-DOCK-SAM62CU		•					
RAM-GDS-DOCKF-SAM62CU		•			•		
RAM-GDS-DOCKL-SAM62CU		•		•			
RAM-GDS-DOCKLF-SAM62CU		•		•	•		
RAM-GDS-DOCK-SAM62CPU			•				
RAM-GDS-DOCKF-SAM62CPU			•		•		
RAM-GDS-DOCKL-SAM62CPU			•	•			
RAM-GDS-DOCKLF-SAM62CPU			•	•	•		
RAM-GDS-DOCK-SAM62CDU			•			•	
RAM-GDS-DOCKF-SAM62CDU			•		•	•	
RAM-GDS-DOCKL-SAM62CDU			•	•		•	
RAM-GDS-DOCKLF-SAM62CDU			•	•	•	•	
RAM-GDS-DOCK-SAM62CD2U			•				•
RAM-GDS-DOCKF-SAM62CD2U			•		•		•
RAM-GDS-DOCKL-SAM62CD2U			•	•			•
RAM-GDS-DOCKLF-SAM62CD2U			•	•	•		•



**RAM-GDS-SKIN-SAM54-NG**  
SAMSUNG TAB ACTIVE PRO

PART NUMBER	POWER mUSB 2.0	POWER USB TYPE-C + DATA SYNC	POWER USB TYPE-C	KEY-LOCKING	COOLING FAN GDS® COOL-DOCK™
RAM-GDS-DOCK-SAM54U	•				
RAM-GDS-DOCKF-SAM54U	•				•
RAM-GDS-DOCKL-SAM54U	•			•	
RAM-GDS-DOCKLF-SAM54U	•			•	•
RAM-GDS-DOCK-SAM54CU		•			
RAM-GDS-DOCKF-SAM54CU		•			•
RAM-GDS-DOCKL-SAM54CU		•		•	
RAM-GDS-DOCKLF-SAM54CU		•		•	•
RAM-GDS-DOCK-SAM54CPU			•		
RAM-GDS-DOCKF-SAM54CPU			•		•
RAM-GDS-DOCKL-SAM54CPU			•	•	
RAM-GDS-DOCKLF-SAM54CPU			•	•	•





**RAM-GDS-SKIN-SAM67-NG**  
SAMSUNG TAB A 8.4  
SM-T307



**RAM-GDS-SKIN-SAM67-NG-LED**  
SAMSUNG TAB A 8.4  
SM-T307

PART NUMBER	POWER mUSB 2.0	POWER USB TYPE-C + DATA SYNC	POWER USB TYPE-C	KEY- LOCKING	COOLING FAN GDS® COOL-DOCK™	SINGLE USB TYPE A PORT PERIPHERAL SUPPORT
RAM-GDS-DOCK-SAM67U	•					
RAM-GDS-DOCKF-SAM67U	•				•	
RAM-GDS-DOCKL-SAM67U	•			•		
RAM-GDS-DOCKLF-SAM67U	•			•	•	
RAM-GDS-DOCK-SAM67CU		•				
RAM-GDS-DOCKF-SAM67CU		•			•	
RAM-GDS-DOCKL-SAM67CU		•		•		
RAM-GDS-DOCKLF-SAM67CU		•		•	•	
RAM-GDS-DOCK-SAM67CPU			•			
RAM-GDS-DOCKF-SAM67CPU			•		•	
RAM-GDS-DOCKL-SAM67CPU			•	•		
RAM-GDS-DOCKLF-SAM67CPU			•	•	•	
RAM-GDS-DOCK-SAM67CDU			•			•



**RAM-GDS-SKIN-SAM63-NG**  
SAMSUNG TAB A 8.0 (2018)  
SM-T387



**RAM-GDS-SKIN-SAM63-NG-LED**  
SAMSUNG TAB A 8.0 (2018)  
SM-T387

PART NUMBER	POWER mUSB 2.0	KEY- LOCKING	COOLING FAN GDS® COOL-DOCK™
RAM-GDS-DOCK-SAM63U	•		
RAM-GDS-DOCKF-SAM63U	•		•
RAM-GDS-DOCKL-SAM63U	•	•	
RAM-GDS-DOCKLF-SAM63U	•	•	•





**RAM-GDS-SKIN-SAM55-NG**  
SAMSUNG TAB A 8.0 (2019)  
SM-T290 & SM-T295



PART NUMBER	POWER mUSB 2.0	POWER USB TYPE-C	KEY- LOCKING	COOLING FAN GDS® COOL-DOCK™	SINGLE USB TYPE A PORT PERIPHERAL SUPPORT
RAM-GDS-DOCK-SAM55U	•				
RAM-GDS-DOCKF-SAM55U	•			•	
RAM-GDS-DOCKL-SAM55U	•		•		
RAM-GDS-DOCKLF-SAM55U	•		•	•	
RAM-GDS-DOCK-SAM55CDU		•			•




**GDS® TOUGH-DOCK™ & GDS® COOL-DOCK™ CONTINUED**


 <p><b>RAM-GDS-SKIN-SAM65-NG</b> SAMSUNG TAB A 10.1" SM-T510 &amp; SM-T515</p>	PART NUMBER	POWER mUSB 2.0	POWER USB TYPE-C + DATA SYNC	POWER USB TYPE-C	KEY- LOCKING	COOLING FAN GDS® COOL-DOCK™
	RAM-GDS-DOCK-SAM65U	•				
	RAM-GDS-DOCKF-SAM65U	•				•
	RAM-GDS-DOCKL-SAM65U	•			•	
	RAM-GDS-DOCKLF-SAM65U	•			•	•
	RAM-GDS-DOCK-SAM65CU		•			
	RAM-GDS-DOCKF-SAM65CU		•			•
	RAM-GDS-DOCKL-SAM65CU		•		•	
	RAM-GDS-DOCKLF-SAM65CU		•		•	•
	RAM-GDS-DOCK-SAM65CPU			•		
	RAM-GDS-DOCKF-SAM65CPU			•		•
	RAM-GDS-DOCKL-SAM65CPU			•	•	
	RAM-GDS-DOCKLF-SAM65CPU			•	•	•



 <p><b>RAM-GDS-SKIN-SAM66-NG</b> SAMSUNG TAB A 10.5" SM-T590 &amp; SM-T597</p>	PART NUMBER	POWER mUSB 2.0	POWER USB TYPE-C + DATA SYNC	POWER USB TYPE-C	KEY- LOCKING	COOLING FAN GDS® COOL-DOCK™
	RAM-GDS-DOCK-SAM66U	•				
	RAM-GDS-DOCKF-SAM66U	•				•
	RAM-GDS-DOCKL-SAM66U	•			•	
	RAM-GDS-DOCKLF-SAM66U	•			•	•
	RAM-GDS-DOCK-SAM66CU		•			
	RAM-GDS-DOCKF-SAM66CU		•			•
	RAM-GDS-DOCKL-SAM66CU		•		•	
	RAM-GDS-DOCKLF-SAM66CU		•		•	•
	RAM-GDS-DOCK-SAM66CPU			•		
	RAM-GDS-DOCKF-SAM66CPU			•		•
	RAM-GDS-DOCKL-SAM66CPU			•	•	
	RAM-GDS-DOCKLF-SAM66CPU			•	•	•

<div><p><b>RAM-GDS-SKIN-SAM75-NG</b> SAMSUNG TAB A7 10.4” SM-T500 &amp; SM-T505</p></div> <div><p><b>RAM-GDS-SKIN-SAM75-NG-LED</b> SAMSUNG TAB A7 10.4” SM-T500 &amp; SM-T505</p></div>	PART NUMBER	POWER mUSB 2.0	POWER USB TYPE-C	KEY- LOCKING	COOLING FAN GDS® COOL-DOCK™
	RAM-GDS-DOCK-SAM75U	•			
	RAM-GDS-DOCKF-SAM75U	•			•
	RAM-GDS-DOCKL-SAM75U	•		•	
	RAM-GDS-DOCKLF-SAM75U	•		•	•
	RAM-GDS-DOCK-SAM75CPU			•	
	RAM-GDS-DOCKF-SAM75CPU			•	•
	RAM-GDS-DOCKL-SAM75CPU			•	•
	RAM-GDS-DOCKLF-SAM75CPU			•	•



 <p><b>RAM-GDS-SKIN-SAM76-NG</b> SAMSUNG TAB S7 11" SM-T870</p>	PART NUMBER	POWER USB TYPE-C + DATA SYNC	POWER USB TYPE-C	KEY- LOCKING	COOLING FAN GDS® COOL-DOCK™
	RAM-GDS-DOCK-SAM76CU	•			
	RAM-GDS-DOCKF-SAM76CU	•			•
	RAM-GDS-DOCKL-SAM76CU	•		•	
	RAM-GDS-DOCKLF-SAM76CU	•		•	•
	RAM-GDS-DOCK-SAM76CPU		•		
	RAM-GDS-DOCKF-SAM76CPU		•		•
	RAM-GDS-DOCKL-SAM76CPU		•	•	
	RAM-GDS-DOCKLF-SAM76CPU		•	•	•

 <p><b>RAM-GDS-SKIN-SAM78-NG</b> SAMSUNG TAB S7+ 12.4" SM-T970</p>	PART NUMBER	POWER USB TYPE-C + DATA SYNC	POWER USB TYPE-C	KEY- LOCKING	COOLING FAN GDS® COOL-DOCK™
	RAM-GDS-DOCK-SAM78CU	•			
	RAM-GDS-DOCKF-SAM78CU	•			•
	RAM-GDS-DOCKL-SAM78CU	•		•	
	RAM-GDS-DOCKLF-SAM78CU	•		•	•
	RAM-GDS-DOCK-SAM78CPU		•		
	RAM-GDS-DOCKF-SAM78CPU		•		•
	RAM-GDS-DOCKL-SAM78CPU		•	•	
	RAM-GDS-DOCKLF-SAM78CPU		•	•	•

 <p><b>RAM-GDS-SKIN-AP32-NG</b> APPLE IPAD AIR 4 APPLE IPAD PRO 11" 1<sup>ST</sup> &amp; 2<sup>ND</sup> GEN</p>  <p><b>RAM-GDS-SKIN-AP32-NG-LED</b> APPLE IPAD AIR 4 APPLE IPAD PRO 11" 1<sup>ST</sup> &amp; 2<sup>ND</sup> GEN</p>	PART NUMBER	POWER USB TYPE-C + DATA SYNC	POWER USB TYPE-C	KEY- LOCKING	COOLING FAN GDS® COOL- DOCK™
	RAM-GDS-DOCK-AP32U				
	RAM-GDS-DOCKF-AP32U				•
	RAM-GDS-DOCKL-AP32U			•	
	RAM-GDS-DOCKLF-AP32U			•	•
	RAM-GDS-DOCK-AP32CU	•			
	RAM-GDS-DOCKF-AP32CU	•			•
	RAM-GDS-DOCKL-AP32CU	•		•	
	RAM-GDS-DOCKLF-AP32CU	•		•	•
	RAM-GDS-DOCK-AP32CPU		•		
	RAM-GDS-DOCKF-AP32CPU		•		•
	RAM-GDS-DOCKL-AP32CPU		•	•	
	RAM-GDS-DOCKLF-AP32CPU		•	•	•

# BUILD YOUR OWN GDS® TOUGH-DOCK™ & GDS® COOL-DOCK™

1

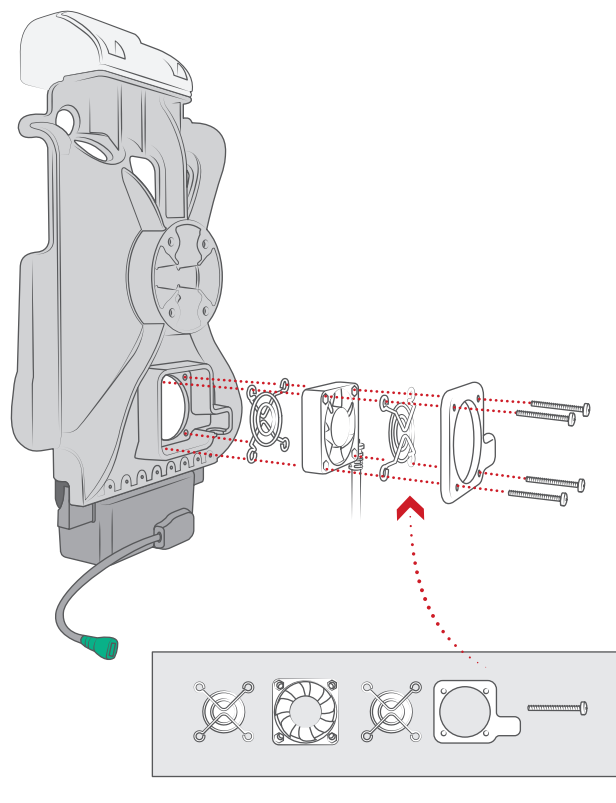
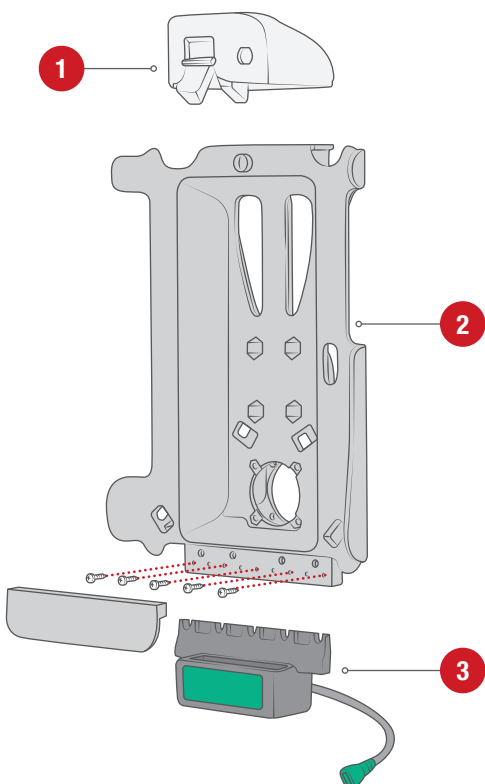
SELECT TOP LATCH  
(LOCKING OR UNLOCKING)

2

SELECT BODY

3

SELECT  
DOCKING CUP



## RAM-GDS-FAN1U

Add GDS® Fan to any Dock Body to create  
GDS® Cool-Dock™

## 1 TOP LATCH



### RAM-GDS-DOCKKHU

GDS® Tough-Dock™ Non-Locking Top



### RAM-GDS-DOCKLHU

GDS® Tough-Dock™ Key-Locking Top



## 2 BODY

MAKE	MODEL	GDS® DOCK BODY
Apple	iPad Air 4	RAM-GDS-DOCKB-AP32U
	iPad Pro 11" 1st Gen	RAM-GDS-DOCKB-AP32U
	iPad Pro 11" 2nd Gen	RAM-GDS-DOCKB-AP32U
Samsung	Tab A 10.1" (SM-T510 & SM-T515)	RAM-GDS-DOCKB-SAM65U
	Tab A 10.5" (SM-T590 & SM-T597)	RAM-GDS-DOCKB-SAM66U
	Tab A 8.0 (2018) (SM-T387)	RAM-GDS-DOCKB-SAM63U
	Tab A 8.0 (2019) (SM-T290 & SM-T295)	RAM-GDS-DOCKB-SAM55U
	Tab A 8.4 (SM-T307)	RAM-GDS-DOCKB-SAM67U
	Tab A7 10.4" (SM-T500 & SM-T505)	RAM-GDS-DOCKB-SAM75U
	Tab Active Pro	RAM-GDS-DOCKB-SAM54U
	Tab Active2	RAM-GDS-DOCKB-SAM62U
	Tab Active3	RAM-GDS-DOCKB-SAM62U
	Tab S7 11" (SM-T870)	RAM-GDS-DOCKB-SAM76U
	Tab S7+ 12.4" (SM-T970)	RAM-GDS-DOCKB-SAM78U



**RAM-GDS-DOCKB-SAM62U**  
GDS® Vehicle Dock Base for  
Samsung Tab Active2 & 3



**RAM-GDS-DOCKB-AP32U**  
GDS® Vehicle Dock Base for iPad  
11" 1<sup>st</sup> and 2<sup>nd</sup> Gen & Air 4<sup>th</sup> Gen

## 3 DOCKING CUP

DOCKING CUP	CONNECTOR	OUTPUT VOLTAGE	POWER OUTPUT	DATA TRANSFER	USB TYPE-A PERIPHERAL SUPPORT
RAM-GDS-DOCK-V9BU	mUSB Female	5V - 12V @ 2A	15W	-	
RAM-GDS-DOCK-V9BCU	USB Type-C Female	5V - 20V @ 3A	60W	5Gbps	
RAM-GDS-DOCK-V10PU	USB Type-C Female	Type-C Tablets: 5V - 12V @ 3A mUSB Tablets: 5V @ 1.5A	15W	-	
RAM-GDS-DOCK-V10PDU	USB Type-C Female	Type-C Tablets: 5V - 12V @ 3A mUSB Tablets: 5V @ 1.5A	15W	-	Single Peripheral
RAM-GDS-DOCK-V10PD2U	USB Type-C Female	Type-C Tablets: 5V - 12V @ 3A mUSB Tablets: 5V @ 1.5A	15W	-	Dual Peripheral



**RAM-GDS-DOCK-V10PU**  
GDS® Powered Dock Cup for  
IntelliSkin® Next Gen Tablets



**RAM-GDS-DOCK-V10PDU**  
GDS® Power + Data Dock Cup for  
IntelliSkin® Next Gen Tablets



**RAM-GDS-DOCK-V10PD2U**  
GDS® Power + Dual USB Data Dock Cup for  
IntelliSkin® Next Gen Tablets





**SEEN IN THESE PHOTOS:**

**RAM-GDS-SKIN-SAM74-NG**

IntelliSkin® Next Gen for Samsung Tab Active3

**RAM-GDS-DOCKL-SAM62CD2U**

Locking GDS® Tough-Dock™ + Dual USB for Samsung Tab Active3 & 2

**RAM-KB2-USB**

GDS® Keyboard™ with Track Pad

**RAM-DIS-103-2U**

RAM® Standard Accessory/Display Bracket

**RAM-D-101U-C-247-4**

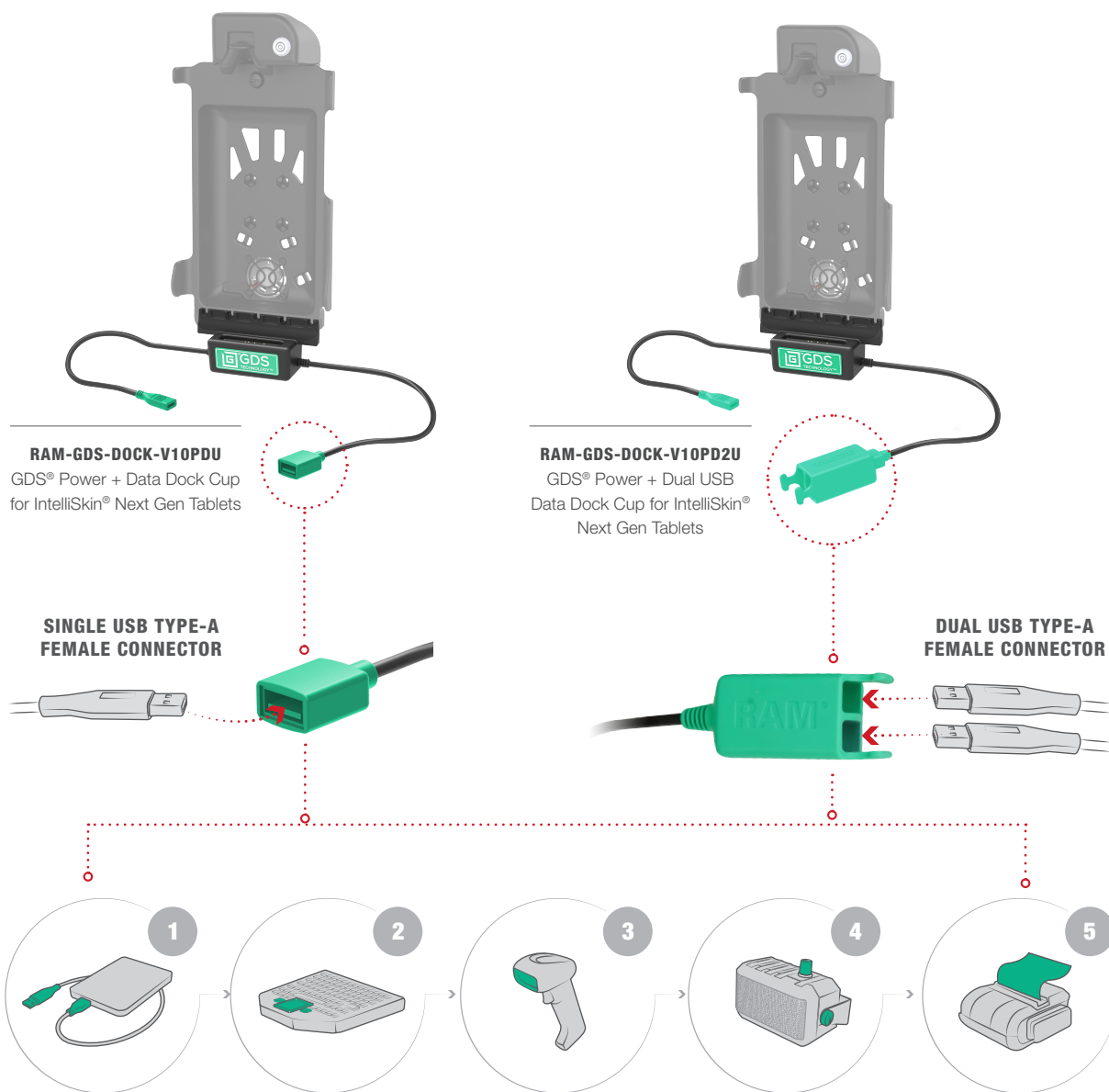
RAM® 4" Square Post Clamp Mount with Round AMPS Plate



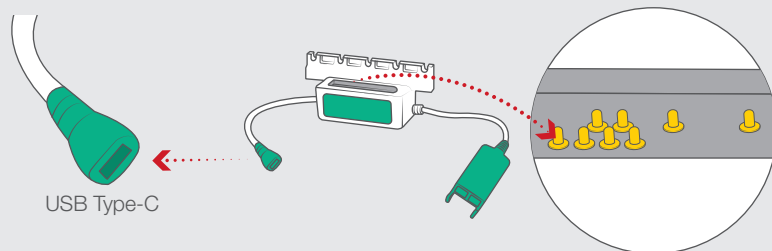


# SINGLE & DUAL PERIPHERAL SUPPORT

Customize your mobile workstation with peripheral add-ons that help improve your workflow. Our GDS® Ecosystem™ makes it easy to choose different peripherals designed to work perfectly with the GDS® Tough-Dock™ and GDS® Cool-Dock™. GDS® Tech™ offers two types of docking cups to support these peripherals—single and dual USB Type A ports. Depending on how many peripherals you plan on adding, the docking cups are available a la carte making it easy to swap in and out of your GDS® Tough-Dock™ or Cool-Dock™.



## FEATURES



Upgrade your existing GDS® vehicle dock to enable high speed charging capabilities for devices using IntelliSkin® Next Gen sleeves, using an 8-pin connection



#### SEEN IN THIS PHOTO:

##### **RAM-GDS-SKIN-SAM54-NG**

IntelliSkin® Next Gen for Samsung Tab Active Pro

##### **RAM-GDS-DOCKL-V9-OMT1U**

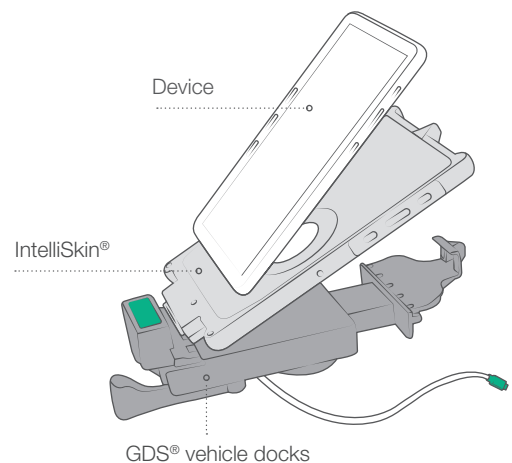
GDS® Type-C Vehicle Dock for IntelliSkin® Next Gen Tablets

##### **RAM-VB-195-SW2**

RAM® No-Drill™ Mount for '17-21 Ford F-250 - F-550 + More

## UNIVERSAL VEHICLE DOCKS TABLET DOCKS FOR INTELLISKIN® NEXT GEN

GDS® vehicle docks with GDS® Technology™ offer a universal charging platform for any device wrapped in an IntelliSkin® sleeve. IntelliSkin® offers drop protection and uses ruggedized external contacts to allow for repetitive docking, with no need to deal with charging cables.





## FOR SAMSUNG TAB A 8.0 (2019) AND TAB A 8.4



**RAM-GDS-DOCKL-V9-SAM67U**  
mUSB 2.0



**RAM-GDS-DOCKL-V10-SAM67CPU**  
USB Type-C



**RAM-GDS-DOCKL-V9-SAM67CU**  
USB Type-C + Data Sync

## FOR ALL OTHER TABLET MODELS



**RAM-GDS-DOCKL-V9-OMT2U**  
mUSB 2.0



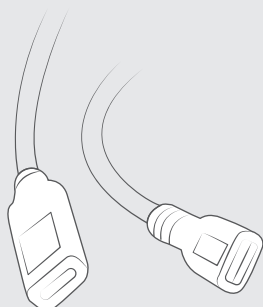
**RAM-GDS-DOCKL-V10-OMT1U**  
USB Type-C



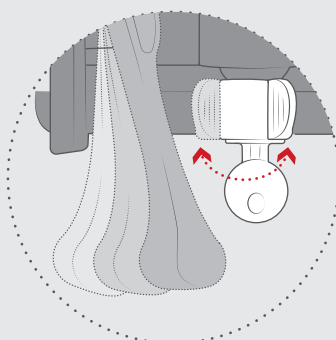
**RAM-GDS-DOCKL-V9-OMT1U**  
USB Type-C + Data Sync

**BEST  
SELLER**

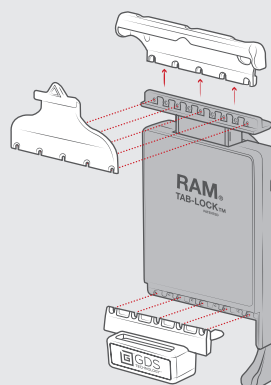
## FEATURES



mUSB and USB Type-C docks  
provide fast charging



Key locking



Interchangeable docking cups





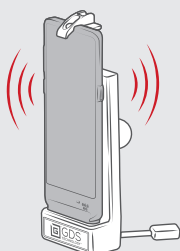
SEEN IN THIS PHOTO:

**RAM-GDS-DOCKL-V3U**

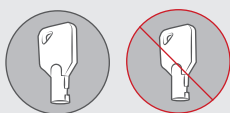
GDS® Locking Vehicle Phone  
Dock with mUSB for IntelliSkin®



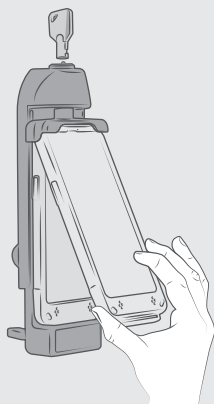
## FEATURES



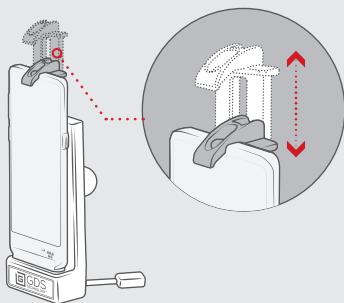
The integrated GDS® Technology™ platform enables charging of the mounted device and safely secures the phone in a variety of vibration application



Locking & non-locking options available



One-handed operation to secure your IntelliSkin®-wrapped phone

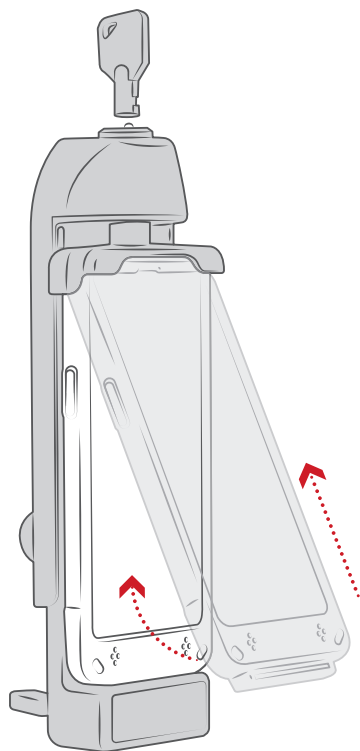


Spring loaded, quick release cradle that offers a secure fit with easy access to the mounted phone or phablet.

## UNIVERSAL VEHICLE DOCKS CONTINUED

### GDS® VEHICLE PHONE DOCKS

GDS® phone docks contain the same integrated pogo pin technology as all GDS® Docks™ to support device charging while docked, as well as data transfer capabilities. Keep all of your files stored on your IntelliSkin®-wrapped Samsung smartphone and transfer to a desktop dock to upload to your computer—no additional cords or data storage devices



Compatible with all RAM® phone mounts



**RAM-GDS-DOCKL-V3CU**  
USB Type-C 3.1  
Key Locking



**RAM-GDS-DOCK-V1U**  
mUSB 2.0  
Non-Locking



**RAM-GDS-DOCKL-V3U**  
mUSB 2.0  
Key Locking



**RAM-GDS-DOCK-V1CU**  
USB Type-C 3.1  
Non-Locking

**SEEN IN THIS PHOTO:**

---

**RAM-GDS-DOCK-D2CU**

GDS® Desktop Dock with USB Type-C  
for IntelliSkin® Products

**RAM-GDS-SKIN-SAM46**

IntelliSkin® for Samsung Galaxy S10





# GDS® DESKTOP DOCKS

Perfect for office environments, GDS® desktop docks can support any device equipped with an IntelliSkin® sleeve to deliver full-time charging as well as data transfer capabilities. Docks ranging from single to multi-device support keep phones and tablets protected and at the ready. GDS® desktop docks support a number of phones and tablets as well as power and data communication.



**RAM-GDS-DOCK-D2CMU**  
GDS® Desktop Dock with Power Delivery USB Type-C



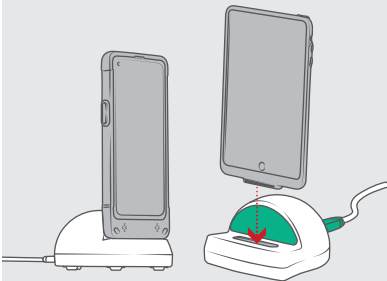
**RAM-GDS-DOCK-D2CM-NDU**  
GDS® Desktop Dock with Power Delivery for IntelliSkin® Next Gen



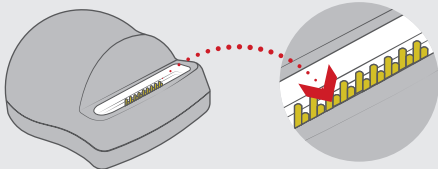
Provides scalability as mobile electronics evolve. Enabling users to minimize expense for future electronics by its modular design and easy upgrades.

PART ID	PORT	CABLE	PHONE INTELLISKINS®	TABLET INTELLISKINS®	SUPPORTS POWER DELIVERY (PD)	SAMSUNG DEX COMPATIBLE
RAM-GDS-DOCK-D2CU	USB Type-C	USB Type A Male	•			
RAM-GDS-DOCK-D2CMU	USB Type-C	USB Type-C Male	•		•	•
RAM-GDS-DOCK-D2U	mUSB	USB Type A Male	•			
RAM-GDS-DOCK-D2C-NDU	USB Type-C	USB Type A Male		•		
RAM-GDS-DOCK-D2C-NDCU	USB Type-C	-		•	•	•
RAM-GDS-DOCK-D2CM-NDU	USB Type-C	USB Type-C Male		•	•	•

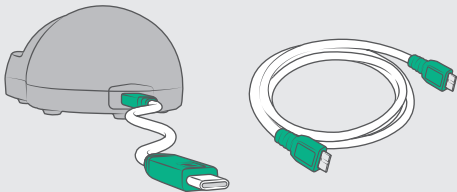
## FEATURES



Low-profile docking station for phones and tablets equipped with an IntelliSkin® protective case.



The Desktop Dock features pogo pin contacts designed to match the pogo pads on IntelliSkin®-wrapped devices supporting USB Type-C data transfer and charging profiles.



Power Delivery docks include a male to male USB Type-C cord which plugs directly into the back of the dock and to a Power Delivery charging source, or external hub.



SEEN IN THIS PHOTO:

**RAM-GDS-DOCK-6G9PU**

GDS® 6-Port Desktop Charger for  
Phones with IntelliSkin®

## MULTI-PORT CHARGING DOCKS

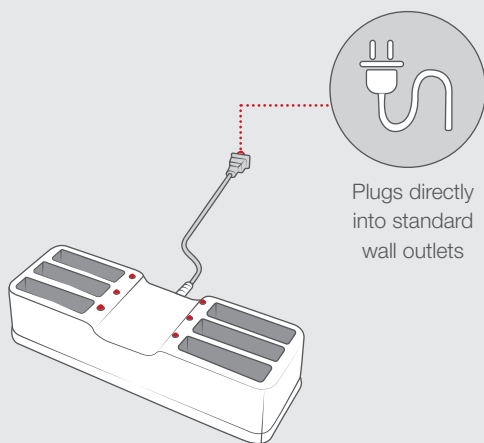
Perfect for office and manufacturing environments, GDS® desktop docks can support any device equipped with an IntelliSkin® sleeve to deliver full-time charging and data transfer. Docks ranging from single to multi-device support keep phones and tablets protected and at the ready. GDS® desktop docks support a number of phones and tablets as well as power and data communication.



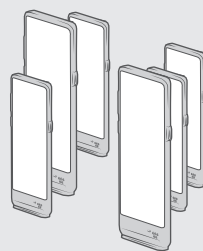
**RAM-GDS-DOCK-6G9PU**

GDS® 6-Port Desktop Charger for  
Phones with IntelliSkin®

### FEATURES



Plugs directly  
into standard  
wall outlets



Simultaneously charges  
up to six smartphone  
devices in an IntelliSkin®  
protective sleeve

IntelliSkin®  
protective sleeve  
with a maximum  
width of 3.25"





## SEEN IN THIS PHOTO:

**RAM-GDS-DOCK-6G1P-NGU**

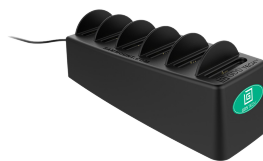
GDS® 6-Port Desktop Charger  
for IntelliSkin® Next Gen



**RAM-GDS-DOCK-6G1PU**  
GDS® 6-Port Desktop Charger  
for IntelliSkin® Products



**RAM-GDS-DOCK-6G1P-NGU**  
GDS® 6-Port Desktop Charger for  
IntelliSkin® Next Gen

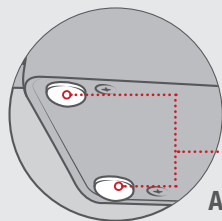


**RAM-GDS-DOCK-6G1PD-NGU**  
GDS® 6-Port Power Delivery Desktop Charger  
for IntelliSkin® Next Gen

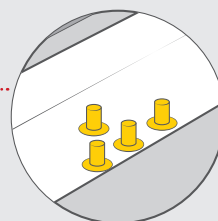
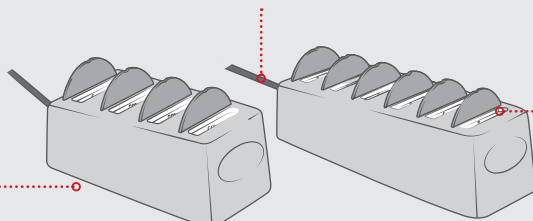
## FEATURES

**SINGLE CORD POWER SUPPLY**

With one plug in the back, power is supplied to all  
docked devices at the same time

**ANTI-SLIP PADS**

Friction pads to  
prevent slipping and  
sliding around your  
desk or workbench

**GDS® POGO PIN TECHNOLOGY**

Utilizing GDS® pogo pin technology, this  
multiport-charging station charges any  
IntelliSkin®-wrapped device



**SEEN IN THIS PHOTO:**

**RAM-GDS-DOCK-G7M-NGU**

GDS® Slide Dock™ with Magnetic  
Attachment for IntelliSkin® Next Gen





# GDS® SLIDE DOCK™

## MASS CHARGING SOLVED

Designed to solve charging issues in a variety of applications, the GDS® Slide Dock™ is a scalable solution for charging multiple devices at the same time. It can be integrated into any flat surface, charging carts, and more. Each GDS® Slide Dock™ includes an LED indicator light that lets you know whether or not it's connected to power, and is available as both a drill-down attachment or a magnetic base.



PART NUMBER	DESCRIPTION
RAM-GDS-DOCK-G7-NGU	Drill-Down
RAM-GDS-DOCK-G7M-NGU	Magnetic
RAM-GDS-DOCK-G7B-NGU	Module only

### FEATURES

The GDS® Slide Dock™ has a USB Type-A male output that can plug into an existing USB port on a cart or into the GDS® 6-port USB charger.

There is an LED indicator light that turns red when your dock is connected to power.

Adjustable height accommodates a variety of different devices

SEEN IN THIS PHOTO:

**RAM-GDS-DOCK-6G10PU**

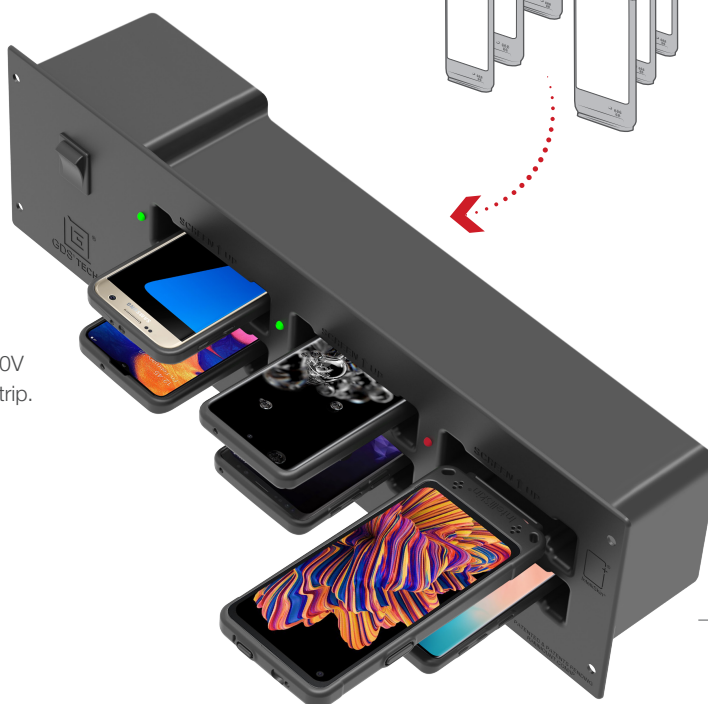
GDS® 6-Port Charging Module for  
IntelliSkin® Phones in Cabinets





# PHONE CABINET MODULE

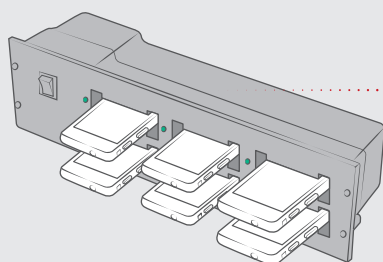
This charging module supports up to 6 devices with IntelliSkin® protective sleeves and can be installed along multiple modules in a cabinet with 19" industry standard racks, creating the ideal mass charging solution for a variety of use cases involving a large inventory of usable smart phones, such as museums, tours, warehouses, retail and more. Utilizing the 78W power supply, this charging module delivers 12.5W of power simultaneously to each device drawing from any standard 120V or 220V wall outlet or power strip.



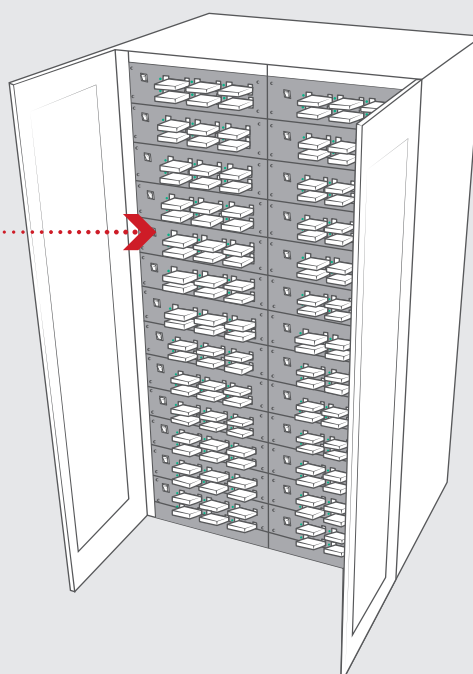
6-Port charging module for any phone with an IntelliSkin® protective case; charges up to 6 devices simultaneously

**RAM-GDS-DOCK-6G10PU**  
GDS® 6-Port Charging  
Module for IntelliSkin®  
Phones in Cabinets

## FEATURES



Designed to be installed in 19" industry standard cabinet racks using 4-hole mounting pattern (18.312" x 3.75")





**SEEN IN THIS PHOTO:**

---

**RAM-GDS-SKIN-SAM63-NG-LED**

IntelliSkin® Next Gen with LED Light for  
Samsung Tab A 8.0 (2018)

**RAM-GDS-HS1U**

GDS® Hand-Stand™ Hand Strap and Kick  
Stand for Tablets





# GDS® ERGO™

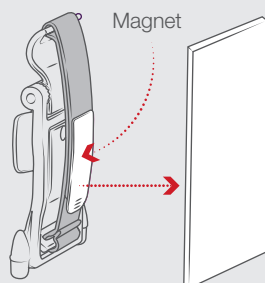
## ACCESSORIES THAT GET THE JOB DONE

Take advantage of GDS® Ergo™ accessories like the GDS® Hand-Stand™ and shoulder strap to enable your tablet for field use. The GDS® Hand-Stand™ is a combination hand strap and kick stand that allows you to easily take your device from the warehouse to the office—and everywhere in between. With the shoulder strap accessory, quickly attach various IntelliSkin® sleeves using the snap hooks to comfortably carry your tablet.

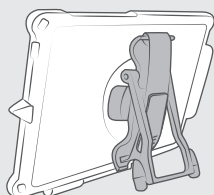
In addition, the IntelliSkin® contact brush can be used to clean debris build-up on the GDS® contacts of IntelliSkin® sleeves. Performing routine cleaning of the GDS® contacts helps to maintain excellent performance and prevent any loss in functionality. An included adhesive pad can be attached to a variety of surfaces.

PART NUMBER	DESCRIPTION
RAM-GDS-HS1U	GDS® Hand-Stand™
RAM-GDS-HS1MU	GDS® Hand-Stand™ with Magnetic Hand Strap
RAM-GDS-SS1U	GDS® Shoulder Strap Accessory
RAM-GDS-BRUSH-01U	IntelliSkin® Contact Brush
RAM-GDS-STU	GDS® Wrist Strap for IntelliSkin®

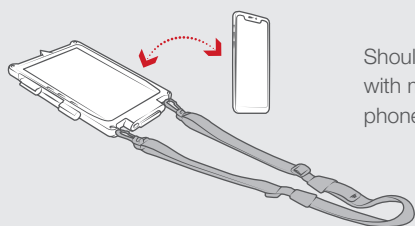
### FEATURES



Magnetic GDS® Hand-Stand™ connects to any ferro-magnetic surface



GDS® Hand-Stand™ compatible with most IntelliSkin® wrapped tablets



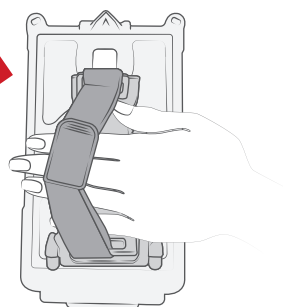
Shoulder strap compatible with most IntelliSkin® wrapped phones & tablets



**BEST  
SELLER**

#### RAM-GDS-HS1U

GDS® Hand-Stand™ Hand Strap and Kick Stand for Tablets



Enhances comfort and convenient for any phone or tablet on the go



#### RAM-GDS-HS1MU

GDS® Hand-Stand™ Magnetic Hand Strap and Kick Stand for Tablets

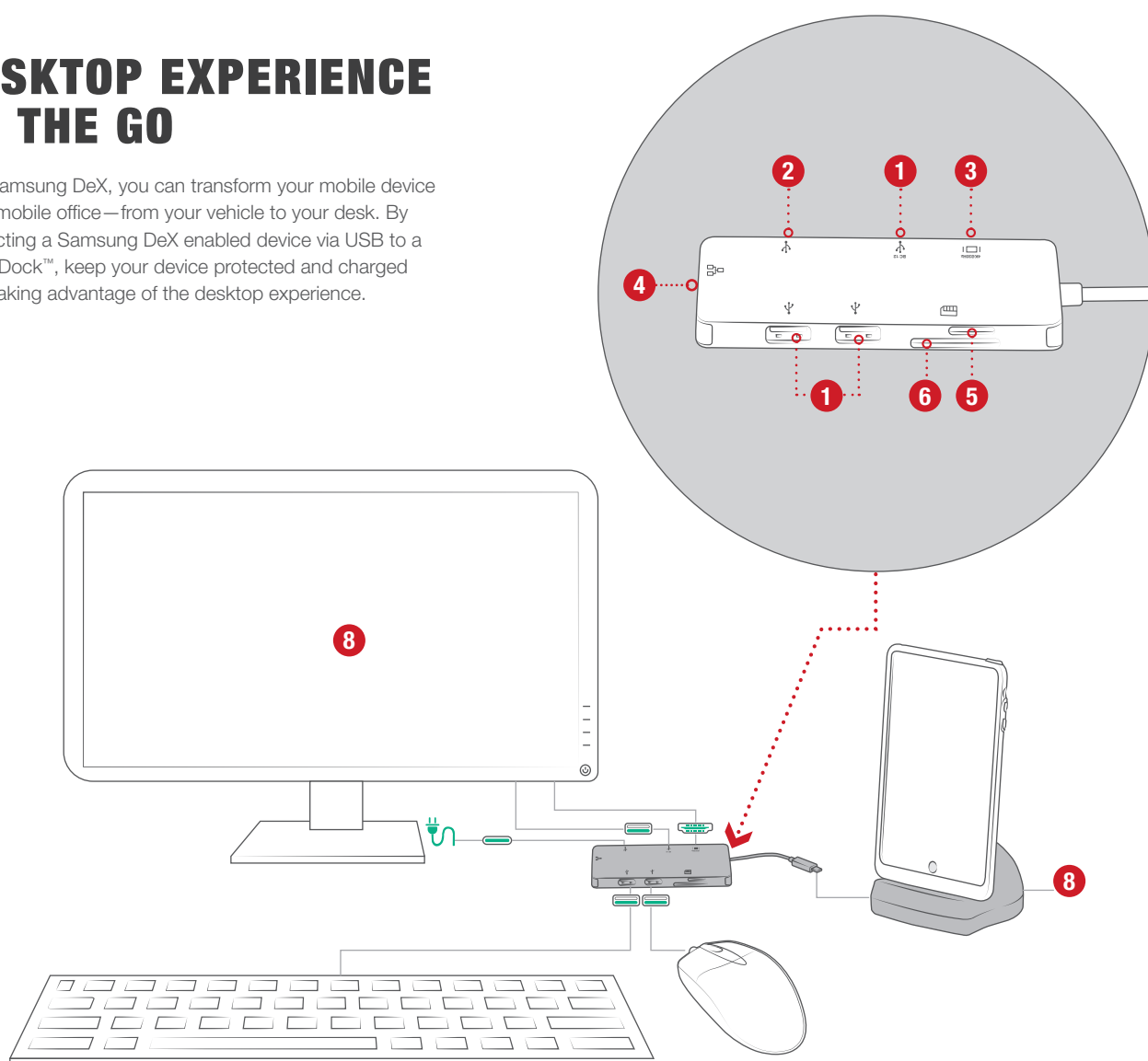


#### RAM-GDS-SS1U

GDS® Shoulder Strap Accessory for IntelliSkin® Products

# DESKTOP EXPERIENCE ON THE GO

With Samsung DeX, you can transform your mobile device into a mobile office—from your vehicle to your desk. By connecting a Samsung DeX enabled device via USB to a GDS® Dock™, keep your device protected and charged while taking advantage of the desktop experience.



## RAM-GDS-HUB-TYPEC-02 / GDS® HUB™ WITH USB TYPE-C FOR DESKTOP

### AVAILABLE CONNECTIONS

1	2	3	4	5	6	7
<b>USB TYPE-A</b> Female X 3	<b>USB TYPE-C</b> Female	<b>HDMI</b> Female	<b>RJ45</b> Ethernet	<b>MICRO SD</b> Card Reader	<b>SD</b> Card Reader	<b>USB TYPE C</b> Male

### DEVICE ENABLEMENT





## SEEN IN THIS PHOTO:

### RAM-GDS-DOCK-D2C-NDCU

GDS® Desktop Dock with USB Type-C for IntelliSkin® Next Gen (No Cable)

### RAM-GDS-HUB-TYPEC-02

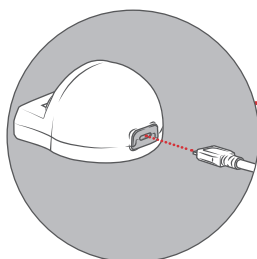
GDS® Hub™ With USB Type-C For Desktop

### RAM-GDS-SKIN-SAM74-NG

IntelliSkin® Next Gen for Samsung Tab Active3



Includes a USB Type-C port to connect to the GDS® Hub™



### RAM-GDS-DOCK-D2C-NDCU

GDS® Desktop Dock with USB Type-C for IntelliSkin® Next Gen (No Cable)

## FEATURES



This desktop dock is also Samsung DeX compatible when using a DeX-compatible device wrapped in IntelliSkin®.





**SEEN IN THIS PHOTO:**

**RAM-VB-196-GDS-EC01**

GDS® Ecosystem™ Vehicle Bundle with Monitor, Keyboard & Phone Mount

**RAM-HOL-TABL-KBU**

RAM® Tab-Lock™ Locking Holder for GDS® Keyboard™



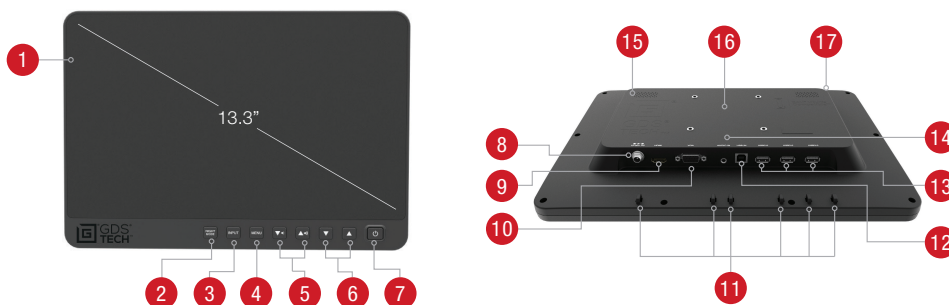
# GDS® VIEW™

## EXPAND THE CAPABILITIES OF YOUR WORKSTATION

The GDS® View™ 13.3" touchscreen monitor lets you take the PC experience on the road. Featuring VESA hole patterns compatible with the RAM-2461U and RAM-D-2461U mounting plates, create a mobile workstation that takes advantage of the GDS® Ecosystem™ for data sync and charging capabilities. The GDS® View™ monitor has undergone MIL-STD-810G 514.5 vibration and MIL-STD810G 516.5 shock testing, ensuring performance in the most demanding environments. This two-point capacitive touchscreen monitor allows you to pinch, zoom, and select—and includes an anti-glare and anti-fingerprint treatment. Control buttons on the front of the monitor are easy to access, while a red monochrome night mode helps to reduce eyestrain. In addition, two integrated 2W speakers allow for audio. Includes HDMI, VGA, and USB Type-B to USB Type-A cables.



**RAM-GDS-MON-13-1**  
GDS® View™ 13.3" Touch  
Screen Monitor



### FEATURES

- |   |  |
|---|--|
| <b>1 AMBIENT LIGHT SENSOR</b>   | <b>10 VGA</b>                         |
| <b>2 NIGHT MODE</b><br>(ON/OFF)   | <b>11 CABLE TIE-DOWNS</b>  |
| <b>3 INPUT SELECTION</b><br>(HDMI, PC)  | <b>12 USB TYPE-B</b><br>(Host input)  |
| <b>4 MENU</b><br>(on screen display)  | <b>13 USB TYPE-A</b>                  |
| <b>5 VOLUME UP/DOWN</b><br>(or navigate in menu)  | <b>14 AUDIO IN</b>                    |
| <b>6 VOLUME UP/DOWN</b><br>(or navigate in menu)  | <b>15 SPEAKER</b><br>(Left)  |
| <b>7 POWER</b><br>(ON/OFF)  | <b>16 VESA 75 MOUNTING</b><br>(#10-24 Thread)  |
| <b>8 POWER</b><br>(10-30V DC)  | <b>17 SPEAKER</b><br>(Right)   |
| <b>9 HDMI</b>                  |  |

### RAM-VB-196-GDS-EC01

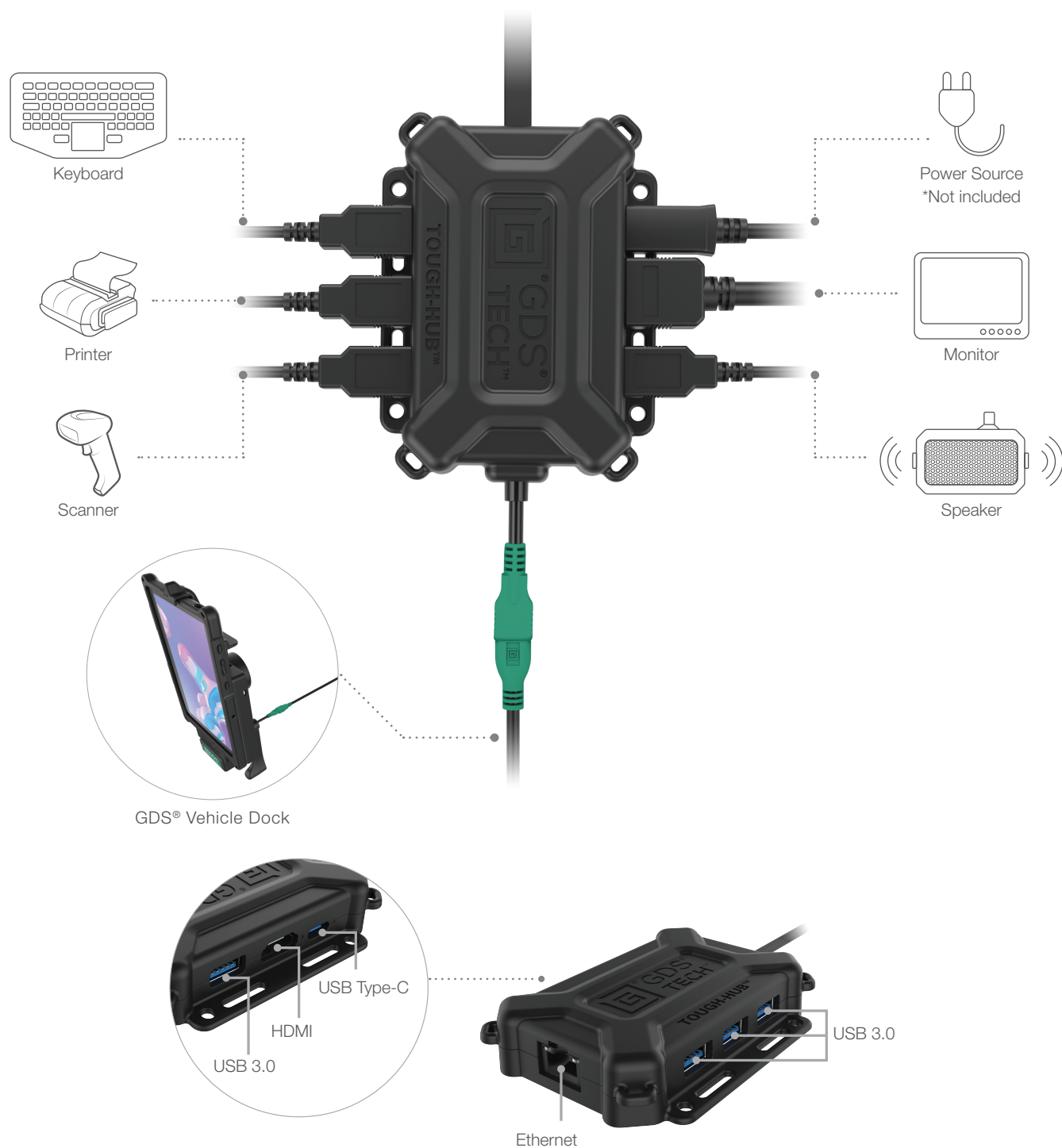
#### GDS® ECOSYSTEM™ VEHICLE BUNDLE WITH MONITOR, KEYBOARD & PHONE MOUNT



# GDS® TOUGH-HUB™

## EXPAND YOUR WORKFLOW

With the GDS® Tough-Hub™, keep a wide range of devices, docks, and peripherals charged and connected in nearly any vehicle. Each GDS® Tough-Hub™ includes numerous ports—USB, HDMI, RJ45, and more.



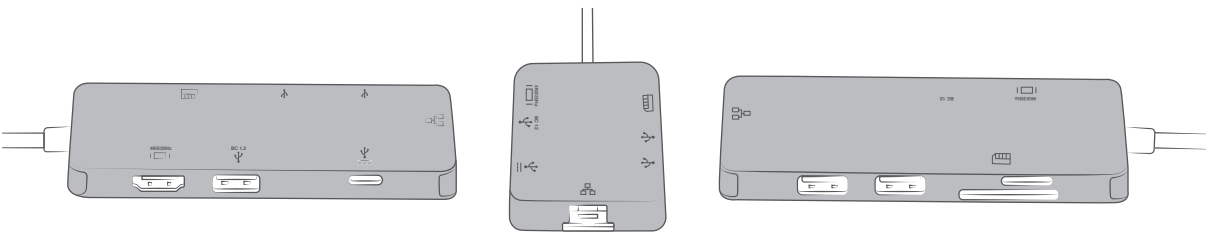
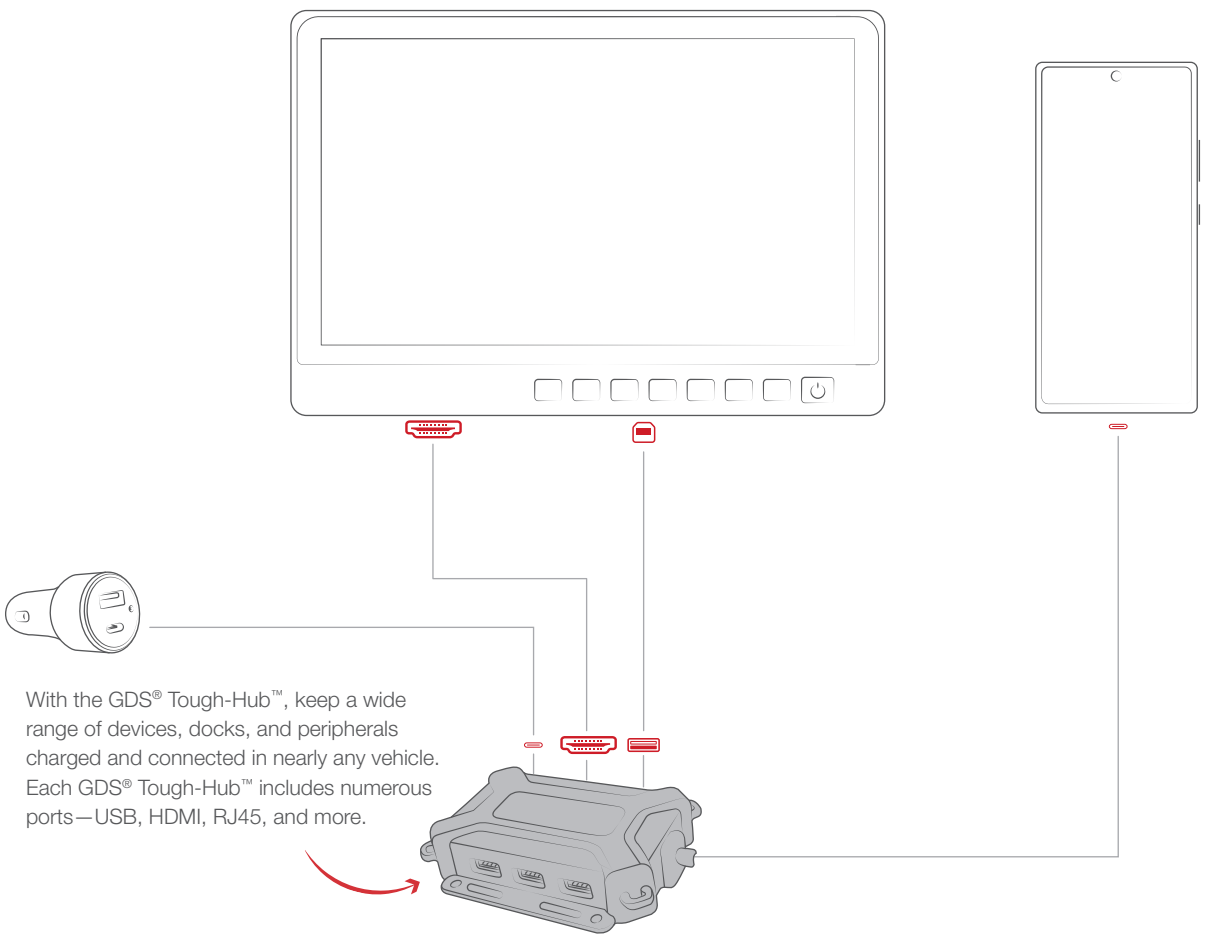
### RAM-GDS-HUB-TYPEC-01

GDS® Tough-Hub™ with USB Type-C for Vehicles



# GDS® ECOSYSTEM™

The GDS® Ecosystem™ offers everything to keep your devices protected, connected, and charged in nearly any application. Ruggedized GDS® Technology™ pogo pins ensure compatibility across IntelliSkin® sleeves, GDS® Docks™, adapters, chargers, keyboards, speakers, monitors, and more. Most products in the GDS® Ecosystem™ are RAM® Mounts Compatible™, so you can rely on the RAM® double ball and socket system for adjustability, durability, and vibration damping.



**RAM-GDS-HUB-TYPEC-02**  
GDS® Hub™ With USB Type-C For Desktop

TABLE OF CONTENTS

WHAT IS GDS®?

INTELLISKIN®

GDS® TOUGH-DOCK™

UNIVERSAL VEHICLE DOCKS

GDS® DESKTOP DOCKS

MULTI-PORT CHARGING DOCKS

GDS® ERGO™

**SEEN IN THESE PHOTOS:**

**RAM-HOL-ZE10PDCLU**

GDS® Combo Locking Power +  
Data Dock for Zebra ET5x 8.3"  
& 8.4" Series

**RAM-KB2-USB**

GDS® Keyboard™  
with Track Pad

**RAM-101U**

RAM® Double Ball Mount  
with Two Round Plates

**RAM-DIS-103-2U**

RAM® Standard  
Accessory/Display Bracket

**RAM-D-2461U-C-247-4**

RAM® 4" Square Post Clamp  
Mount with 75x75mm VESA Plate





# GDS® KEYBOARD™

## RUGGED AND DURABLE KEYBOARD SOLUTION

Featuring AMPS and VESA hole patterns for attachment to a variety of brackets, these rugged GDS® Keyboard™ solutions are RAM® Mounts Compatible™. With the RAM® Tab-Tite™ and RAM® Tab-Lock™ holders, easily secure either wired keyboard into place for use in vehicles and other mobile workstations. Choose between two keyboard versions: one featuring a 10-key numeric pad and the other featuring a track pad.

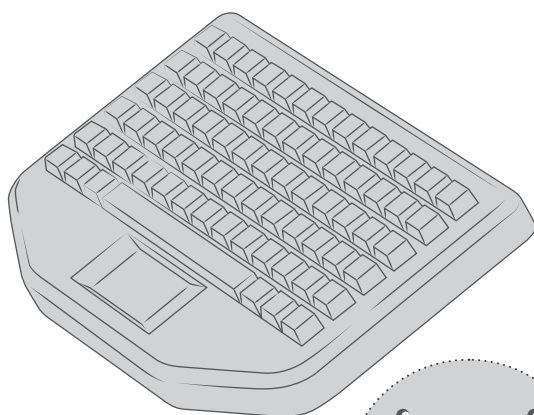


**BEST  
SELLER**

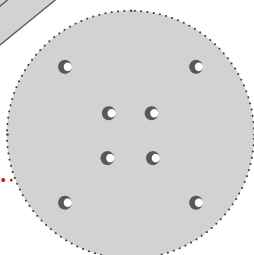
**RAM-KB2-USB**  
GDS® Keyboard™ with Track Pad



**RAM-KB4-USB**  
GDS® Keyboard™ with 10-Key  
Numeric Pad



Back view of the  
GDS® Keyboard™



AMPS & VESA  
hole patterns for  
any RAM® Mount



**RAM-HOL-TAB-KBU**  
RAM® Tab-Tite™ Holder for  
GDS® Keyboard™

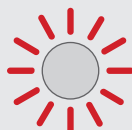


**RAM-HOL-TABL-KBU**  
RAM® Tab-Lock™ Locking Holder for  
GDS® Keyboard™

### FEATURES



Track pad & 10-Key  
options available



Backlit with red illumination to  
reduce eyestrain at night



IP65 rated to protect  
against dust and spills



**SEEN IN THIS PHOTO:**

**RAM-SPEAK-A02**

GDS® Audio™ Amplified Speaker  
with PTT Breakout Feature

**RAM-GDS-101LB-OMT2-SAM67U**

GDS® Locking Vehicle Dock  
Bundle for Samsung Tab A 8.4

**RAM-101-MIC1U**

RAM® Short Bracket Adapter for  
Speakers & Microphones



**SEEN IN THIS PHOTO:**

**RAM-101B-225B-SAM60PD-AUD-V7BU**

RAM® Powered Mount for Samsung Tab Active3 and Tab Active2 with Speaker

**RAM-GDS-SS1U**

GDS® Shoulder Strap Accessory for IntelliSkin® Products

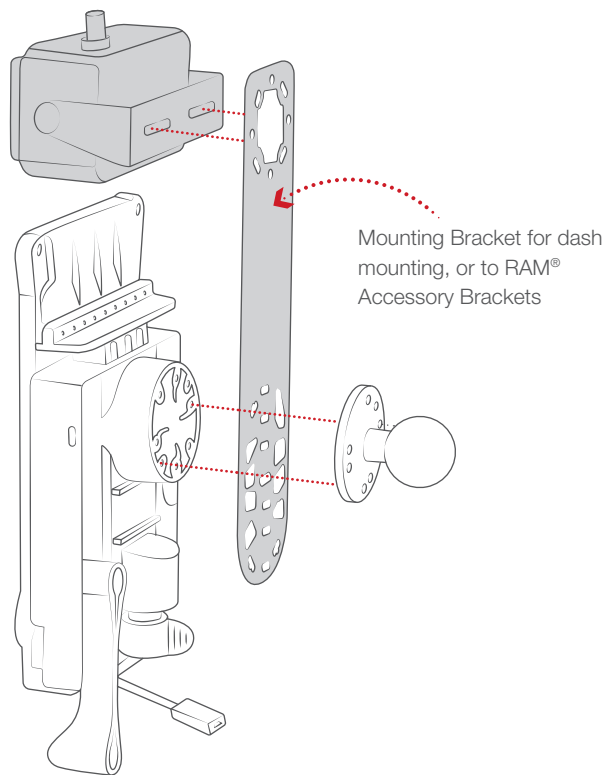




# GDS® AUDIO™

## AMPLIFIED AUDIO ON THE GO

This amplified wired speaker can be efficiently adjusted to an ideal position, and includes a knob to quickly change the volume. The speaker is RAM® Mounts Compatible™ —making it easy to secure wherever it's needed.



**RAM-SPEAK-A01**  
GDS® Audio™ Amplified Speaker



**RAM-SPEAK-A02**  
GDS® Audio™ Amplified Speaker  
with PTT Breakout Feature

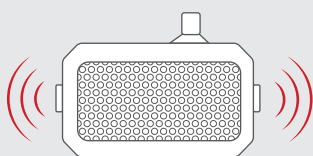


**RAM-101-MIC1U**  
RAM® Short Bracket Adapter for  
Speakers & Microphones

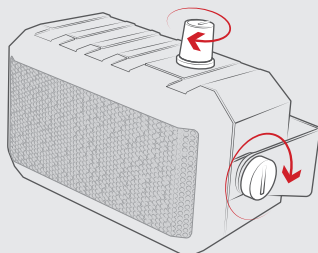


**RAM-101-MIC2U**  
RAM® Standard Bracket Adapter  
for Speakers & Microphones

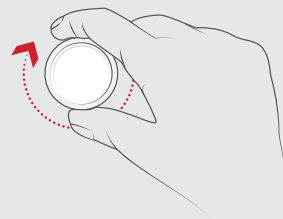
### FEATURES



8Ω / 10W rated speaker



Independently adjustable volume knob



Max volume range: 93dB

# GDS® CHARGE™

## CHARGERS FOR ANY SITUATION

A wide variety of GDS® Charge™ accessories help to power GDS® devices and docks. Choose from cigarette, hardwire, and wall chargers for a variety of USB types. See the list below to find the charger that's compatible with your device.

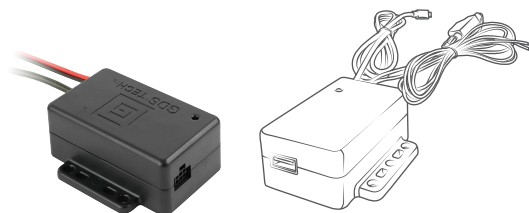
### WALL AND VEHICLE CHARGERS

PART NUMBER	CHARGER TYPE	INPUT RANGE	OUTPUT	OUTPUT CONNECTOR TYPE	COMPATIBLE DEVICES
RAM-GDS-CHARGE-USB2QCCIG	2 port cig charger with Quick Charge support	12-18VDC	Port 1: Quick Charge 3.0(18W) Port 2: 36W Max 5V/2.4A (12W)	2 Qty USB-A Female	Any 5V/9V device with a current requirement of 2.4A or less. Includes support of Apple iOS 2.1/2.4A devices and support for Qualcomm® Quick Charge™ 2.0/3.0 devices
RAM-GDS-CHARGE-V7BU	USB Type-A hardwire	8-40VDC	5VDC & 9VDC (QC only) 2.5A Max	.2M cable with USB-A Female	Any 5V/9V device with a current requirement of 2.5A or less. Includes support of Apple iOS 2.1/2.4A devices and support for Qualcomm® Quick Charge™ 2.0/3.0 devices
RAM-GDS-CHARGE-V7-M55U	DC cable hardwire	8-40VDC	5VDC 2.5A Max	1.2M cable with DC plug	Any 5V device with a current requirement of 2.5A or less
RAM-GDS-CHARGE-V7-MUSBU	mUSB hardwire	8-40VDC	5VDC & 9VDC (QC only) 2.5A Max	1.2M cable with Micro-B USB Male	Any 5V/9V device with a current requirement of 2.5A or less. Includes support of Apple iOS 2.1/2.4A devices and support for Qualcomm® Quick Charge™ 2.0/3.0 devices
RAM-GDS-CHARGE-USBCU	USB Type-C hardwire	8-40VDC	5VDC & 9VDC (QC only) 2.5A Max	1.2M cable with USB-C Male	Any 5V/9V device with a current requirement of 2.5A or less. Includes support of Apple iOS 2.1/2.4A devices and support for Qualcomm® Quick Charge™ 2.0/3.0 devices
RAM-GDS-CHARGE-USB6	6 port charger	100-240V 50/60Hz	5V/2.4A Per Port (Max) 60W Max, 12A	6 Qty USB-A Female	Any 5V device with a current requirement of 2.4A or less
RAM-GDS-CHARGE-V3CU	USB Type-C hardwire	12-24VDC	5V/3A; 9V/3A; 12V/3A; 15V/2.5A 37.5W Max	1 M cable with USB-C Male	Any device supporting Power Delivery 2.0 up to 36W
RAM-GDS-CHARGE-USBCW	GDS® Type-C 18W Mini Wall Charger	100-240V 50/60Hz	Type C/QC 3.0 Output: 5V/3A, 9V/2A 18W 12V/1.5A	Type-C Female	Devices supporting USB 3.1 Power Delivery 3.0 and Qualcomm Quick Charge 3.0 up to 15V/1.2A
RAM-GDS-CHARGE-USBC2W	GDS® Type-C and Type-A 48W Premium 2-Port Wall Charger	100V-240V 50/60Hz	USB-A Output : 5V/3A, 9V/2A, 12V/1.5A USB-C Output: 5V/3A, 9V/3A, 15V/2A, 20V/1.5A 48W Total	1 QTY Type-C Female (Power Delivery) & 1 QTY Type-A Female (QC 3.0)	USB-C: Devices supporting USB 3.1 Power Delivery 3.0 up to 20V/1.5A Type-A: Any 5V/9V device with a current requirement of 2.5A or less
RAM-GDS-CHARGE-CIGC	GDS® Type-C and Type A 2-Port Cigarette Charger	12-24V DC	USB-A Output : 5V/3A, 9V/2A, 12V/1.5A. USB 2.0 BC 1.2 5V/1.67A, Type C Power Delivery 5V/3A, 9V/3A, 12V/3A, 15V/3A, 20V/2.25A Max 63W (45W for Type-C & 18W for Type-A)	1 QTY Type-C Female (Power Delivery) & 1 QTY Type-A Female (QC 3.0)	USB-C: Devices supporting USB 3.1 Power Delivery 3.0 up to 20V/2A. Type-A: Any 5V/9V device with a current requirement of 2.5A or less
RAM-GDS-CHARGE-V3CAU	GDS® Hardwire Charger with USB Type C Male Connector and USB Type A Port for peripherals	12V - 24V DC	5V/3A; 9V/3A; 12V/3A; 15V/2.5A 37.5W Max	Male Type-C with Female Type-A for peripheral support	Supports any USB-C Device that uses the USB 3.1 PD2.0 standard or higher, with max power up to 36W (5V/3A, 9V/3A, 12V/3A, 15V/2.5A)

### USB CABLES

PART NUMBER	LENGTH	CABLE TYPE
RAM-GDS-CAB-MUSB2-1	1.2 Meters	USB Type-A male to mUSB 2.0 male
RAM-GDS-CAB-MUSB290-1	1.2 Meters	USB Type-A male to 90-Degree mUSB 2.0 male
RAM-GDS-CAB-USBC-AMCMU	1 Meter	USB Type-A male to USB Type C 3.0 male
RAM-GDS-CAB-MUSB3-1	1.2 Meters	USB Type-A male to mUSB 3.0 male
RAM-GDS-CAB-USBA-DC90-1U	1 Meter	USB Type-A male to 5.5mm DC Connector
RAM-GDS-CAB-USBC-CMCMU	0.5 Meter	USB Type-C 3.1 Gen 1 male to USB Type-C 3.1 Gen 1 male



**RAM-GDS-CHARGE-RS232U**

GDS® Hardwire Charger with mUSB Plug and Serial adapter

**INPUT****6 PIN MOLEX**

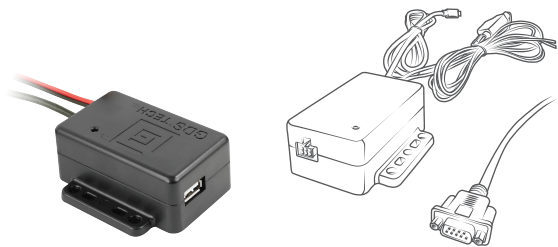
Female with DB 9 Cable

**HARDWIRE POWER SUPPLY**

Built-in

**OUTPUT****USB MICRO-B**

Male

**RAM-GDS-CHARGE-OTGAU**

GDS® Hardwire Charger with mUSB Plug and type-A PORT

**INPUT****USB TYPE-A**

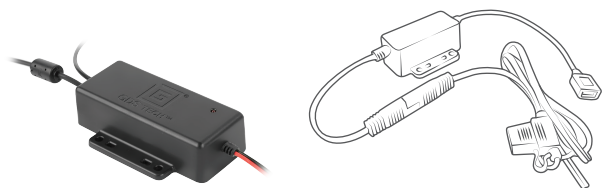
Female

**HARDWIRE POWER SUPPLY**

Built-in

**OUTPUT****USB MICRO-B**

Male

**RAM-GDS-CHARGE-V3CAU**

GDS® Hardwire Charger with USB type-C PLUG

**INPUT****USB TYPE-A**

Female

**HARDWIRE POWER SUPPLY**

Built-in

**OUTPUT****USB TYPE-C POWER DELIVERY**

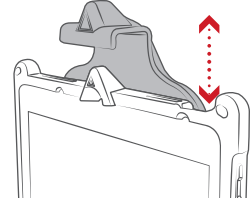
Male

# POWER DELIVERY DOCKS

MAKE	MODEL	POWER DELIVERY (PD) SUPPORTED	POWER DELIVERY (PD) REQUIRED
Apple	iPad 5th Gen	No	No
	iPad 6th Gen	No	No
	iPad 7th Gen	Yes	No
	iPad 8th Gen	Yes	Yes
	iPad Air 2	No	No
	iPad Air 3	No	No
	iPad Air 4	Yes	No
	iPad mini 2	No	No
	iPad mini 3	No	No
	iPad mini 4	No	No
	iPad mini 5	No	No
	iPad Pro 9.7"	No	No
	iPad Pro 10.5"	No	No
	iPad Pro 11" 1st Gen	Yes	Yes
	iPad Pro 11" 2nd Gen	Yes	Yes
	iPad Pro 12.9" 1st Gen	No	No
	iPad Pro 12.9" 2nd Gen	No	No
	iPad Pro 12.9" 3rd Gen	Yes	Yes
	iPad Pro 12.9" 4th Gen	Yes	Yes
Samsung	Note 10	Yes	No
	Note 20	Yes	No
	Note 9	Yes	No
	S10	Yes	No
	S20 5G	Yes	No
	S20 Ultra 5G	Yes	No
	S20+ 5G 6.7" (2020)	Yes	No
	S8	Yes	No
	S9	Yes	No
	Tab A 8.0 (2018)	No	No
	Tab A 8.0 (2019)	No	No
	Tab A 10.1 (2019)	Yes	No
	Tab A7 10.4" (2020)	Yes	No
	Tab Active Pro	Yes	No
	Tab Active2	Yes	No
	Tab Active3	Yes	No
	Tab S6 lite 10.4" (2020)	Yes	No
	Tab S7 11" (2020)	Yes	No
	Tab S7+ 12.4" (2020)	Yes	No
	XCover 4S	Yes	No
	XCover Pro	Yes	No

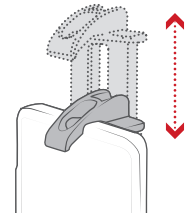
## POWER DELIVERY VEHICLE DOCKS

### RAM-GDS-DOCKL-V10-0MT1U



Easy, quick release of your tablet for on-the-go applications

### RAM-GDS-DOCK-V1CU

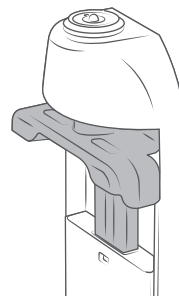


Spring loaded, quick release cradle that offers a secure fit with easy access to the mounted phone or phablet.

### RAM-GDS-DOCKL-V3CU



Compatible with all RAM® phone mounts

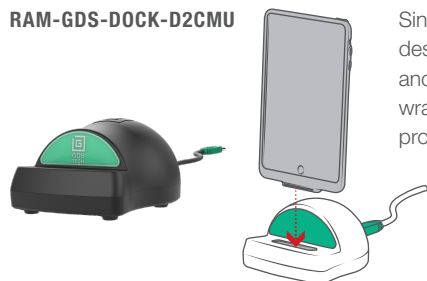


Height adjustable key locking bracket for multiple phone sizes



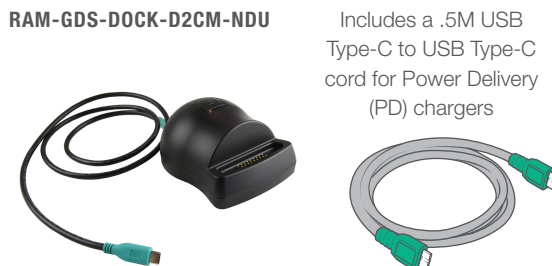
## POWER DELIVERY DESKTOP DOCKS

### RAM-GDS-DOCK-D2CMU



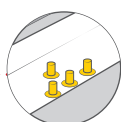
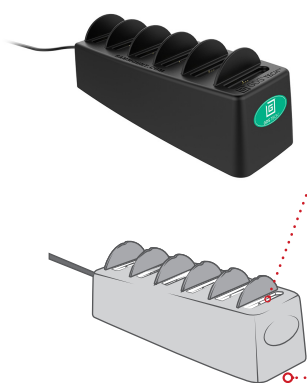
Single desktop dock designed for docking and charging devices wrapped in IntelliSkin® protective sleeves

### RAM-GDS-DOCK-D2CM-NDU

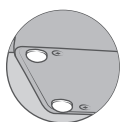


Includes a .5M USB Type-C to USB Type-C cord for Power Delivery (PD) chargers

### RAM-GDS-DOCK-6G1PD-NGU



Utilizing GDS® Pogo Pin Technology, this multiport charging station charges any IntelliSkin®-wrapped device

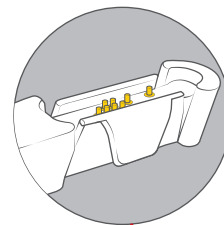


Friction pads to prevent slipping and sliding around your desk or workbench

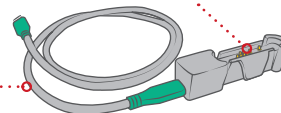
### RAM-GDS-AD3CMU



Provides charging and data sync capabilities to IntelliSkin®-wrapped devices



Power Delivery capable through an integrated 1M male to male USB Type-C cable



## POWER DELIVERY CHARGERS

### RAM-GDS-CHARGE-V3CU



USB Type-C Male

### RAM-GDS-CHARGE-V3CAU



USB Type-C Male

### RAM-GDS-CHARGE-USBC2W



USB Type-A

USB Type-C

### RAM-GDS-CHARGE-USBCW



USB Type-C

### RAM-GDS-CHARGE-CIGC

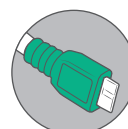


USB Type-A

USB Type-C

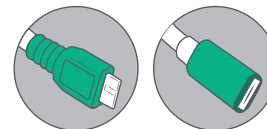
## POWER DELIVERY USB CABLES

### RAM-GDS-CAB-USBC-CMCM-20-10



USB cable with USB Type-C male to USB Type-C male

### RAM-GDS-CAB-USBC-CMCFU



USB Type C 3.1 Male to female extension cable



**SEEN IN THIS PHOTO:**

**RAM-GDS-DOCKLF-SAM67U**

Locking GDS® Cool-Dock™ for  
Samsung Tab A 8.4 SM-T307






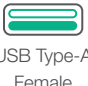




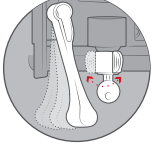
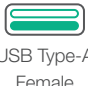

# BUNDLES

The ELD (Electronic Logging Device) mandate requires that every commercial truck operating on US or Canadian highways and roads must have an electronic logging device record HOS (Hours of Service). RAM® Mounts provides turnkey solutions to this mandate by offering complete bundles for ELD compliance.

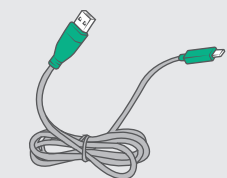
## SAMSUNG GALAXY TAB A 8.4 & TAB A 8.0 (2019)

Designed specifically for the Tab A 8.4 & Tab A 8.0 (2019), these bundles are all you need to become ELD compliant. Equipped with locking and non-locking features these bundles include a non-locking GDS® Tough-Dock™, IntelliSkin® Next Gen, hardwire charger, low-profile double ball mount with C size (1.5") ball & socket components, USB extension cable, backing plate adapter and two cable clamps. For added security and theft deterrence, the RAM® Pin-Lock™ socket arm is available.

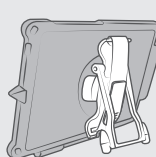
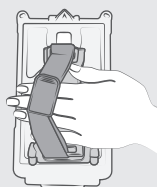
 <p>Non-Locking</p>  <p>USB Type-A Female</p>  <p><b>RAM-GDS-101B-SAM67U</b> GDS® Tough-Dock™ Locking Vehicle Bundle for Samsung Tab A 8.4</p>	 <p>Non-Locking</p>  <p>USB Type-C Female</p>  <p><b>RAM-GDS-101B-SAM67CU</b> GDS® Tough-Dock™ USB Type-C Vehicle Bundle for Samsung Tab A 8.4</p>	 <p>Locking</p>  <p>USB Type-A Female</p>  <p><b>RAM-GDS-101LB-SAM67U</b> GDS® Tough-Dock™ Locking Vehicle Bundle for Samsung Tab A 8.4</p>	 <p>Locking</p>  <p>USB Type-A Female</p>  <p><b>RAM-GDS-101LB-OMT2-SAM67U</b> GDS® Locking Vehicle Dock Bundle for Samsung Tab A 8.4</p>
---	---	---	--

 <p>Non-Locking</p>  <p>USB Type-A Female</p>  <p><b>RAM-GDS-101B-SAM55U</b> GDS® Tough-Dock™ Vehicle Bundle for Samsung Tab A 8.0 (2019)</p>	 <p>Locking</p>  <p>USB Type-A Female</p>  <p><b>RAM-GDS-101LB-SAM55U</b> GDS® Tough-Dock™ Locking Vehicle Bundle for Samsung Tab A 8.0 (2019)</p>	 <p>Locking</p>  <p>USB Type-A Female</p>  <p><b>RAM-GDS-101LB-OMT2-SAM55U</b> GDS® Locking Vehicle Dock Bundle for Samsung Tab A 8.0 (2019)</p>
--	---	--

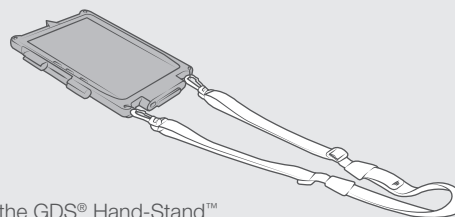
## FEATURES



1.2m cable and mUSB port to connect to power



Compatible™ with the GDS® Hand-Stand™ Hand Strap and Kick Stand attachment



**SEEN IN THIS PHOTO:**

---

**RAM-GDS-SKIN-SAM67-NG**

IntelliSkin® Next Gen for Samsung Tab A 8.4 SM-T307

**RAM-GDS-DOCKL-V9-SAM67U**

GDS® mUSB Vehicle Dock for Samsung Tab A 8.4 & Tab A 8.0 (2019)

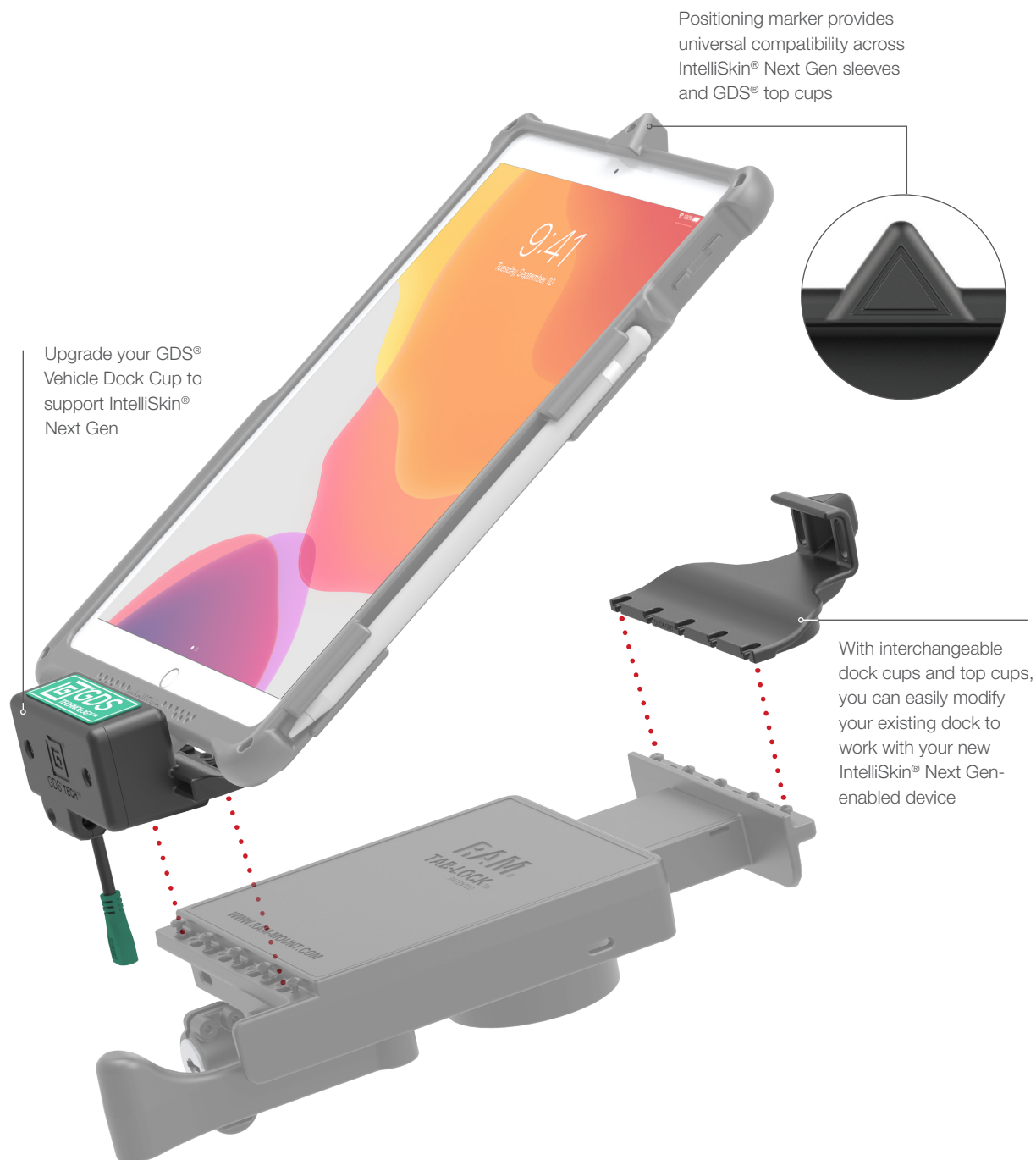




# GDS® VEHICLE DOCKS™

## FUTURE PROOF

The modularity of GDS® vehicle docks provide the highest quality and most cost-effective solutions for your tablet, including future device upgrades. The GDS® Ecosystem™ and universal GDS® pogo pins provide compatibility across multiple devices.



# LEGACY GDS® & INTELLISKIN® PRODUCTS

## TABLET INTELLISKINS®

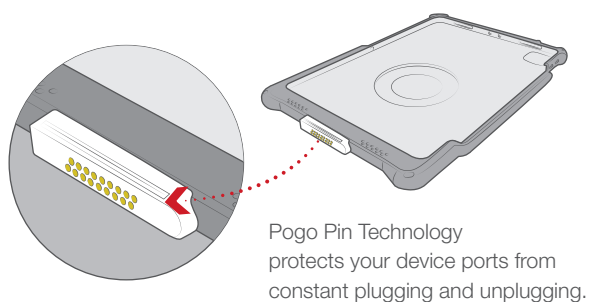
MAKE	MODEL	1 INTELLISKIN®	2 VEHICLE DOCK
Apple	iPad mini 2	RAM-GDS-SKIN-AP2	RAM-GDS-DOCKL-V2-AP2U
	iPad mini 3	RAM-GDS-SKIN-AP2	RAM-GDS-DOCKL-V2-AP2U
	iPad Pro 11" 1st Gen	RAM-GDS-SKIN-AP23	RAM-GDS-DOCKL-V2-AP23U
	iPad Pro 11" 2nd Gen	RAM-GDS-SKIN-AP23-A	RAM-GDS-DOCKL-V2-AP23U
LG	G Pad F 8.0	RAM-GDS-SKIN-LG2	RAM-GDS-DOCKL-V2-LG2U
Samsung	Galaxy Tab 4 10.1	RAM-GDS-SKIN-SAM13U	RAM-GDS-DOCKL-V2-SAM13U
	Galaxy Tab 4 7.0	RAM-GDS-SKIN-SAM11U	RAM-GDS-DOCKL-V2-SAM11U
	Galaxy Tab 4 8.0	RAM-GDS-SKIN-SAM12U	RAM-GDS-DOCKL-V2-SAM12U
	Galaxy Tab A 10.1 SM-T580	RAM-GDS-SKIN-SAM23	RAM-GDS-DOCKL-V2-SAM23U
	Galaxy Tab A 10.1 with S Pen SM-P580	RAM-GDS-SKIN-SAM26	RAM-GDS-DOCKL-V2-SAM23U
	Galaxy Tab A 7.0	RAM-GDS-SKIN-SAM24	RAM-GDS-DOCKL-V2-SAM24U
	Galaxy Tab A 8.0 (2015) SM-T350 & SM-T355	RAM-GDS-SKIN-SAM16U	RAM-GDS-DOCKL-V2-SAM16U
	Galaxy Tab A 8.0 (2017) SM-T380 & SM-T385	RAM-GDS-SKIN-SAM35	RAM-GDS-DOCKL-V2-SAM35U
	Galaxy Tab A 8.0 (2018) SM-T387	RAM-GDS-SKIN-SAM40	RAM-GDS-DOCKL-V2-SAM40U
	Galaxy Tab A 9.7	RAM-GDS-SKIN-SAM15U	RAM-GDS-DOCKL-V2-SAM15U
	Galaxy Tab Active2	RAM-GDS-SKIN-SAM29H	RAM-GDS-DOCKL-V2-SAM29CU
	Galaxy Tab E 8.0 SM-T377 & SM-T378	RAM-GDS-SKIN-SAM21	RAM-GDS-DOCKL-V2-SAM21U
	Galaxy Tab E 9.6	RAM-GDS-SKIN-SAM20U	RAM-GDS-DOCKL-V2-SAM20U
	Galaxy Tab S 10.5	RAM-GDS-SKIN-SAM10U	RAM-GDS-DOCKL-V2-SAM10U
	Galaxy Tab S 8.4	RAM-GDS-SKIN-SAM9U	RAM-GDS-DOCKL-V2-SAM9U
	Galaxy Tab S2 8.0	RAM-GDS-SKIN-SAM18U	RAM-GDS-DOCKL-V2-SAM18U
	Galaxy Tab S2 9.7	RAM-GDS-SKIN-SAM19U	RAM-GDS-DOCKL-V2-SAM19U
	Galaxy Tab S3 9.7	RAM-GDS-SKIN-SAM27	RAM-GDS-DOCKL-V2-SAM27U
	Galaxy Tab S4 10.5" SM-T830, SM-T835, SM-T837	RAM-GDS-SKIN-SAM41	RAM-GDS-DOCKL-V2-SAM41U
	Galaxy Tab S5e SM-T720 & SM-T725	RAM-GDS-SKIN-SAM49	RAM-GDS-DOCKL-V2-SAM49U
	Galaxy Tab A 10.1 (2019) SM-T510 & SM-T515	RAM-GDS-SKIN-SAM50	RAM-GDS-DOCKL-V2-SAM49U
	Galaxy Tab A 10.5 SM-T590 & SM-T597	RAM-GDS-SKIN-SAM43	RAM-GDS-DOCKL-V2-SAM43U

## PHONE INTELLISKINS®

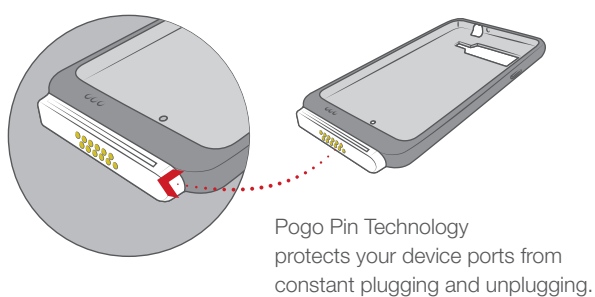
MAKE	MODEL	3 INTELLISKIN®	4 VEHICLE DOCK
Samsung	Galaxy J3 (2016)	RAM-GDS-SKIN-SAM25	RAM-GDS-DOCK-V1U
	Galaxy J3 (2017)	RAM-GDS-SKIN-SAM31	
	Galaxy J7 (2017)	RAM-GDS-SKIN-SAM32	
	Galaxy S6	RAM-GDS-SKIN-SAM14U	
	Galaxy S7	RAM-GDS-SKIN-SAM22	
	Galaxy S8	RAM-GDS-SKIN-SAM28	
	Galaxy S8+	RAM-GDS-SKIN-SAM30	
	Galaxy XCover 4	RAM-GDS-SKIN-SAM37	
	Galaxy XCover 4s	RAM-GDS-SKIN-SAM51	



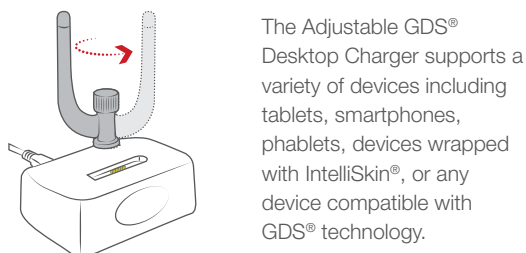
## 1 TABLET INTELLISKINS®



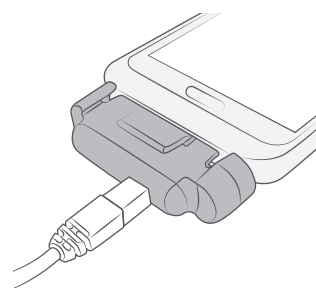
## 3 PHONE INTELLISKINS®



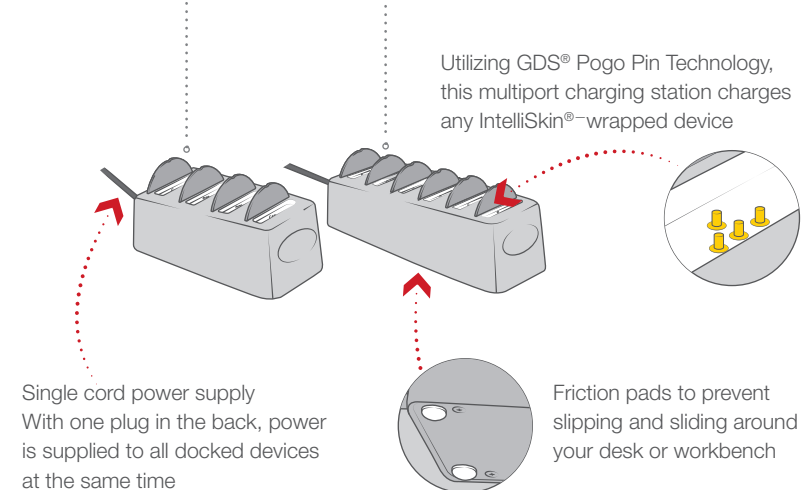
## 5 RAM-GDS-DOCK-D1AU



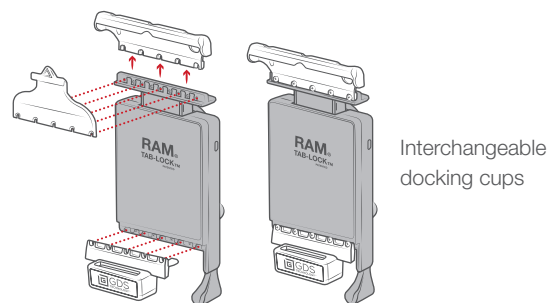
## 7 RAM-GDS-AD1U



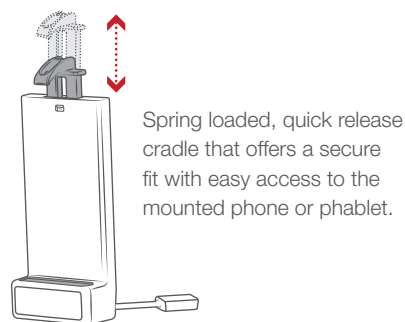
## 8 RAM-GDS-DOCK-4G1PU 9 RAM-GDS-DOCK-6G1PU



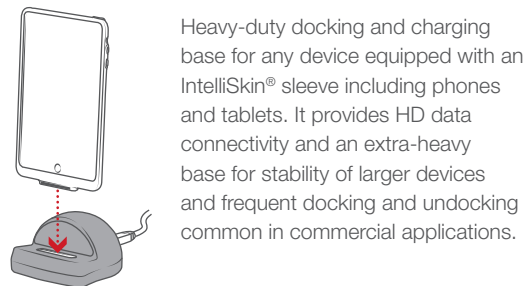
## 2 TABLET VEHICLE DOCK



## 4 PHONE VEHICLE DOCK



## 6 RAM-GDS-DOCK-D1U





## Device Protection & Charging, Solved



RAM® double socket arms with their distinctive Hourglass Shape are recognized globally as a symbol of the reliability, quality and durability of this line of products. The Hourglass Shape is a registered trademark of National Products Inc.



The distinctive RAM® "X-Grip®" product shape is a trademark of National Products Inc.

gdstech.com  
1.800.497.7479  
sales@rammount.com

### NATIONAL PRODUCTS INC. PRODUCTS DISCLAIMER & LEGAL INFO

NEVER USE MOBILE COMPUTING OR COMMUNICATION EQUIPMENT WHILE A VEHICLE IS IN MOTION

RAM® Mounts are designed for dynamic mounting applications but are not intended to be used in excess of reasonable load limits. National Products Inc., maker of RAM® Mounts, expressly denies any liability for a product failure and assumes no responsibility for lost or damaged mounting systems. National Products Inc. assumes no liability for injuries or any other losses sustained while using these products. RAM® Mounts should not be used in such a manner as to distract the operator from the operation of vehicles or other devices, or to create any safety hazards.

D® product shape, "Hourglass" product shape, 3-D Float, Adapt-A-Post, Adapt-To-RAM, Add-A-Ball, Adjust-A-Pole, Always Protected, Always Connected, Aqua Box, Aqua-Box, Bond-A-Base, D Shape, Dock-N-Lock, Drop-N-Lock, EZ-On/Off, EZ-Roll'r, EZ-Strap, EZ-Mount, Finger-Grip, Flex-Arm, Flex-Base, Flex-Lens, Flex-Rod, GDS, GDS Audio, GDS Case, GDS Charge, GDS Compatible, GDS Cradle, GDS Cup, GDS Dock, GDS Ecosystem, GDS Ergo, GDS Green, GDS Hub, GDS Keyboard, GDS Service, GDS Skin, GDS Sleeve, GDS Tech, GDS Technology, GDS View, Go-Dock, Hand-Track, HandStand, Hand-Case, IntelliSkin, IntelliSkin Compatible, IntelliSkin HD, Just RAM It!, Latch-N-Lock, Level Cup, Level-Base, Light-Speed, LJ Buddy, MDT-Mate, Meri-Nut, Meri-Rivet, Mighty-Buddy, Mirror-Mate, Multi-Pad, No-Drill, Power Caddy, Power Plate, Power-Grip, Press-N-Lock, Quick-Snap, Quick-Draw, Quick-Grip, RAM, RAM "X-Grip" product shape, RAM Bow-Cam, RAM Compatible, RAM Mount, RAM Mounting Systems, RAM Mounts, RAM Mounts Compatible, RAM Pin-Lock, RAM Pod, RAM Pod HD, RAM ROD, RAM Ratchet, RAM Ratchet Arm, RAM Ratchet Swing Arm, RAM Tube, RAM Tube Jr, RAM X-Grip, RAM-A-CAN, RAM-A-SNACK, Remove-A-Pole, Roller-Ball, Foto-View, Round-A-Mount, Safe-N-Secure, Safe-T-Charge, Seat-Mate, Seat-Mate, Secure-N-Motion, Shock-Buster, Slide Dock, Slide-N-Lock, Snap-Con, Snap-Link, Stack-N-Stow, Stubby, Tab-Lock, Tab-Tite, Team RAM, Tele-Mount, Tele-Pole, Tilt-N-Turn, Torque, Torque-Track, Tough-Ball, Tough-Box, Tough-Clamp, Tough-Claw, Tough-Cleat, Tough-Clip, Tough-Dock, Tough-Hub, Tough-Pole, Tough-Tap, Tough-Track, Tough-Tray, Tough-Tube, Tough-Wedge, Track-Ball, Track-Node, Twist-Lock, Twist-N-Tilt, Twist-N-Turn, Uni-Conn, Wedge-Lock, Your Best Connection, are either registered trademarks or trademarks of National Products Inc. in the United States and/or other countries.

RAMMOUNT.COM/IP

Printed in the USA. Please recycle.