



APC NetBotz Series

Monitor and protect your IT infrastructure with certainty.

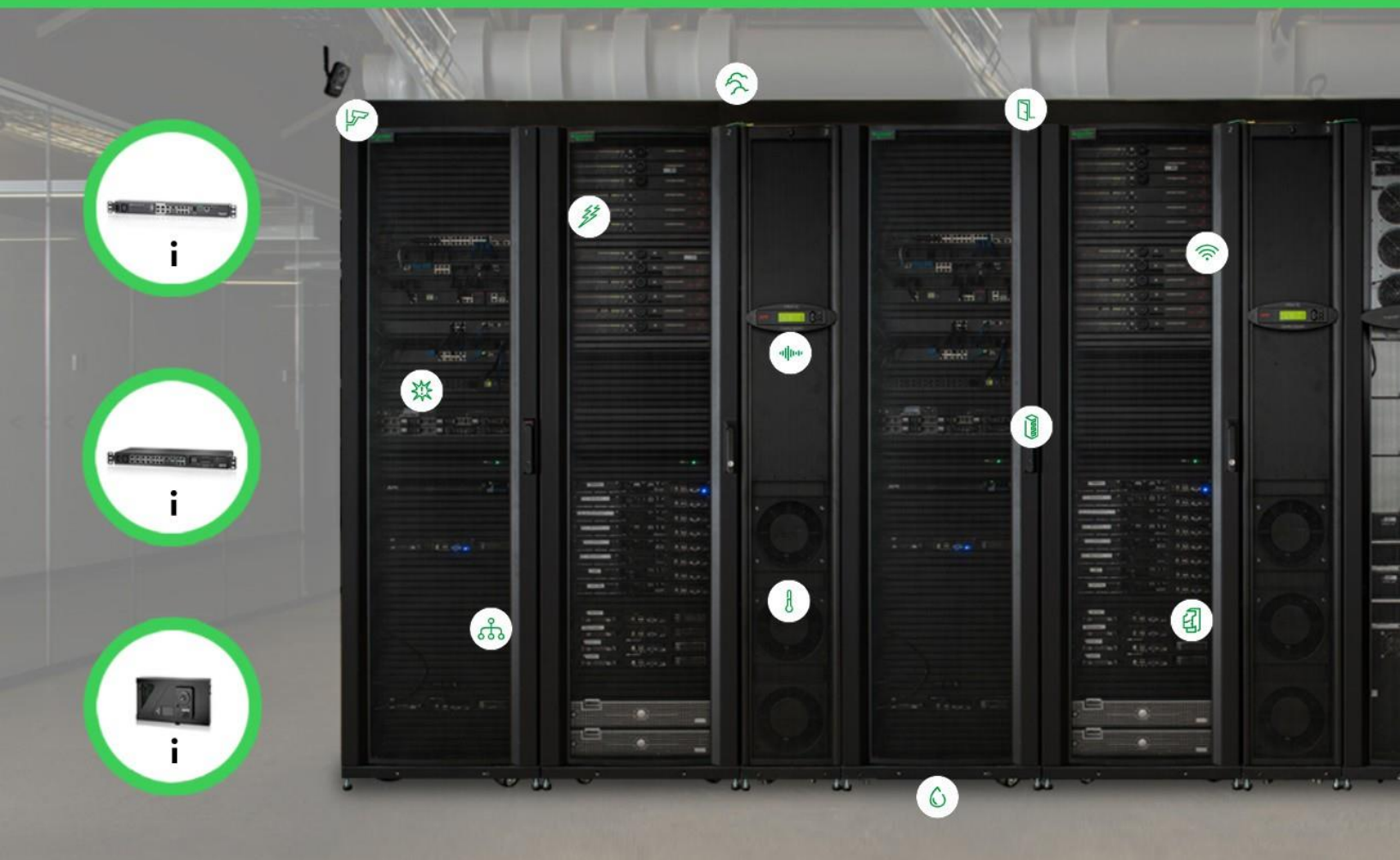
apc.com/netbotz

Life Is On

APC
by Schneider Electric



NetBotz Solution in Action



Monitor and protect your IT infrastructure with certainty

In today's world, with the heavy reliance on IT infrastructure to maintain business continuity, it is more essential than ever for a business to protect its IT assets and avoid downtime.

Intentional or accidental access events and environmental factors such as temperature, humidity, smoke and water leaks pose a significant threat to the company's IT infrastructure. Regulatory and compliance requirements require organizations to limit physical access to information systems, equipment and the operating environments only to authorized individuals.

APC's security and environmental monitoring solution - NetBotz can help tackle all these challenges at once so businesses can focus on growth.

The industry's most comprehensive solution for your IT security and environmental monitoring needs

APC™ NetBotz™ is designed to protect your IT infrastructure against environmental threats and unauthorized access risks that can cause unexpected downtime.

Compute is quickly moving closer to where it is used at the Edge, increasing the risks of water damage, high temperature & humidity, fire or other conditions bringing down business-critical applications. Intentional or malicious access events not only threaten compute availability, but also leave enterprises vulnerable to costly compliance violations.

NetBotz series provides integrated sensing, surveillance¹ and badged rack-access control to help mitigate these risks through a wide array of intelligent sensors, camera¹ clip captures, configurable alerts and robust management options.

Why should you consider NetBotz?



4MP HD camera support with video storage¹



Badged access control



Wide array of intelligent sensors



Instant, highly customizable user-defined alerts



Highly scalable with expansion pods



Remote management with built-in network management



Seamless 3rd party IT infrastructure integration



Enhanced cyber security



Easy to deploy and configure

1. Camera pod is only available on the NetBotz 750 and 755 series models.

NetBotz Portfolio Overview

NetBotz 250



The cost-effective and essential sensing, access control and instant alerting for IT environments of all sizes where IT rack space is available. Supports up to 78 wired sensors, 47 wireless sensors and badged access for up to 26 rack doors.

Ideal environment: Data Center and Edge

NetBotz 750



Integrated surveillance, sensing, access control and instant alerting for IT environments of all sizes where IT rack space is available.

Supports up to 4 HD cameras, 78 wired sensors, 47 wireless sensors and badged access for 26 rack doors.

Ideal environment: Data Center and Edge

NetBotz 755



Integrated surveillance, sensing, access control and instant alerting for IT environments of all sizes where IT rack space is unavailable.














Supports up to 4 HD cameras, 16 wired sensors, 47 wireless sensors and badged access for 2 rack doors.

Ideal environment: Edge

	NetBotz 250	NetBotz 755 ⁴	NetBotz 750 ⁴
Product series	NetBotz Rack Monitor	NetBotz Room Monitor	NetBotz Rack Monitor
Plug and play sensors	•	•	•
Embedded network management	•	•	•
Email/SNMP based instant alerts	•	•	•
EcoStruxure ready	•	•	•
Enhanced web UI experience		•	•
True private network support		•	•
3rd party IT integration		•	•
Pricing	\$	\$\$	\$\$\$
Sensors and pods (maximum number supported)			
HD camera pod 165	-	4	4
Integrated rack access handles	2	-	2
Universal wired sensors	78	16	78
Wireless sensors	47	47	47
Rack access pod 175	12	1	12
Sensor pod 150	12	2	12

4. NetBotz 750 and 755 appliances shipped to EU regions under enforcement of 2014/53/EU do not support wireless

Sensors and Pods Overview

Sensors		
Type		Description
	Temperature	Provides real-time temperature data
	Humidity	Provides real-time humidity data
	Wireless	Available for temperature and humidity sensing (helps reduce the clutter and expense of cabling)
	Spot and Rope Leak	Provides early detection of fluid in your data center or network closet
	Door Switch	Monitors access to a room or rack
	Smoke	Detects smoke in IT spaces (supplements the existing fire safety system)
	Dry Contact	Connects to 3 rd party devices to provide critical monitoring
	Vibration	Detects vibration in racks that may indicate movement of IT assets
	0-5V	Connects to 3 rd party pressure sensors to help monitor liquids and gasses
Pods		
Type		Description
	Camera	Provides high definition surveillance with motion detection
	Rack Access	Provides badged access control for a rack
	Rack Sensor	Supports 6 additional sensors (rackmount)
	Room Sensor	Supports 4 additional sensors (wallmount)

For detailed sensor and pod compatibility information please refer to the compatibility chart on any NetBotz product page.

NetBotz Management Solutions



Built-in network management

For remote access and management

Connect to your network and gain instant control

Built-in network management allows for secure connection and control of an individual NetBotz unit via web browser, command-line interface or SNMP. The configurable and highly customizable notification feature keeps you informed about problems as they occur.



EcoStruxure IT

Connecting hybrid IT environments for advanced insights

Cloud-based vendor-neutral monitoring with EcoStruxure™ IT

EcoStruxure IT monitors and protects your critical equipment, providing 24/7 visibility through live data, smart alarming and data-driven insights on the health of your connected assets directly to your smartphone.

When you upgrade to EcoStruxure™ Asset Advisor, remote troubleshooting is provided by the experts monitoring your connected assets 24x7.



3rd party infrastructure solution

For better user experience and flexibility

Connect to your 3rd party central management software with ease¹

APC NetBotz 750 and 755 series now provides simplest integrations into third party systems via REST API so you can manage your NetBotz without any roadblocks.

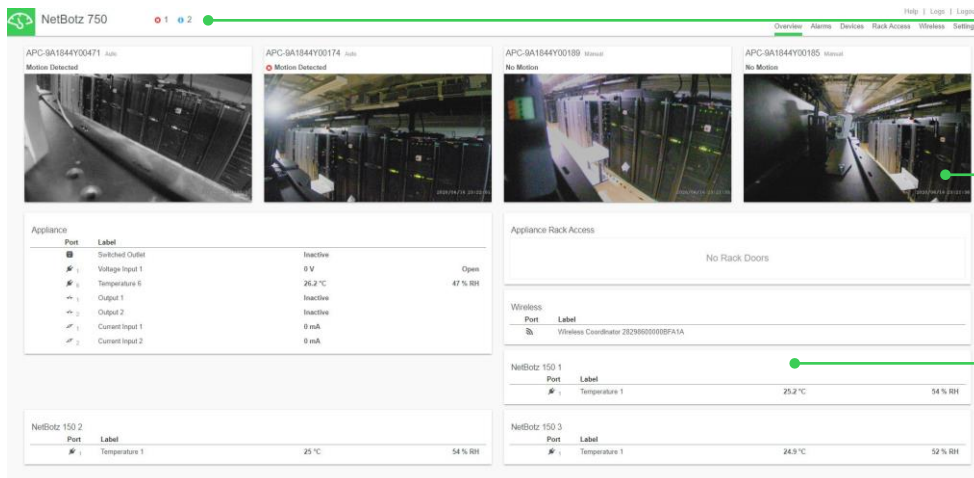
3rd party camera support¹

APC NetBotz 750 and 755 series now allows you to pull in camera feeds from many third party vendors that support ONVIF².

1. 3rd party integration and camera support is only available on the NetBotz 750 and 755 series models.

2. ONVIF Profile S cameras will not have full functionality of NetBotz 165 camera, including motion detection; learn more at www.onvif.com

Web Interface Overview

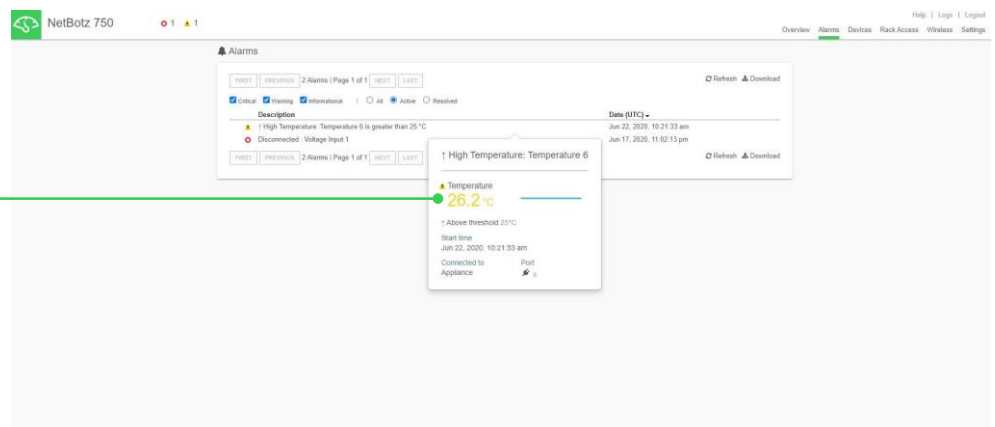


Real-time alerts overview

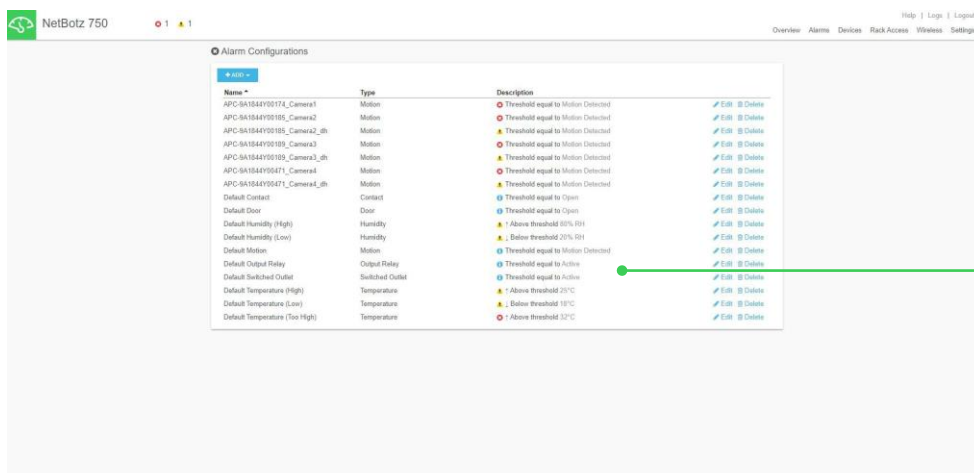
Multiple camera feeds on a single screen

Real-time sensor data overview

View active alarms in real-time to quickly respond to emergencies



User-configurable extensive alarm threshold options



SKU Technical Specifications

	NBRK0250A	NBRK0750 ⁴	NBWL0755 ⁴ NBWL0756 ¹
Product Series	NetBotz Rack Monitor	NetBotz Rack Monitor	NetBotz Room Monitor
Hardware			
Includes	NBRK0250A Device, Power Cord, Micro USB Cable, Mouting Gear, A-Link Terminator, Wireless Coordinator, Wireless Temperature Sensor, Wired Temperature & Humidity Sensor	NBRK0750 Device, Power Cord, Micro USB Cable, Mounting Gear, A-Link Terminator, Wireless Coordinator, Wireless Temperature Sensor, Wired Temperature & Humidity Sensor	NBWL0755/NBWL0756 Device, HD Camera Pod 165, Micro USB Cable, Wall Anchor, Mounting Gear, POE Injector NBAC0303NA2 ¹
External cameras supported	None	NetBotz Camera Pod 165, ONVIF Profile S Cameras ²	
Universal wired sensors supported	Temp, Temp/Humidity, Door Contact, Smoke, Spot Leak, Rope Leak, Vibration, Dry Contact, 0-5V		
Wireless sensors supported	Wireless Temp, Wireless temp/humidity, Wireless Coordinator/Router (NBWC100U only)		
Expansion pods supported	Rack Sensor Pod 150, Room Sensor Pod 155, Rack Access Pod 175		
Communications and management			
Connectors and ports	(1)10/100 Base-T Public LAN, (6) APC Universal Sensor, (2) Access Control Handles, (2) Door Contact, (1) 12/24V control IO, (1) voltage relay, (1) USB ports, (2) A-link ports, (1) Wireless Coordinator Port, (1) Beacon Port, (1) Switched Outlet, (1) Mini-USB Console Port	(1) 10/100/1000 Base-T Public LAN, (6) APC Universal Sensor, (2) Access Control Handles, (2) Door Contact, (4) PoEPrivate Network Ports for Camera, (2) 4-20mA Sensor, (2) 12/24V relay IO, (2) USB ports, (2) Rope Leak, (2) A-link ports, (1) Wireless Coordinator Port, (1) Beacon Port, (1) Switched Outlet, (1) Micro-USB Console Port	(1) 10/100/1000 Base-T public LAN, (4) APC Universal Sensor, (1) PoE Private Network Ports for Camera, (2) 12/24V relay IO, (1) USB ports, (1) Rope Leak, (1) A-link ports, (1) Wireless Coordinator Port, (1) Micro-USB Console Port
Indicators	Power, Network Link		Power, Network Link, Temp and Humidity OLED screen
Protocols	A-Link, DHCP, DNS, HTTPS, SMTP, SNMP v1 and v3, SSHv2, TCP/IP, TLS 1.2		
Management interface	Google Chrome, Mozilla Firefox, EcoStruxure Data Center Expert ³	Google Chrome, Mozilla Firefox, REST API, EcoStruxure Data Center Expert ³	
Physical			
Dimensions H x W x D, inches (mm)	1.72 x 17.0 x 2.33 (44.0 x 432.0 x 59.0)	1.7 x 17.0 x 7.0 (43.5 x 432.0 x 178.0)	5.5 x 9.6 x 3.6 (140 x 244 x 91.28)
Shipping dimensions H x W x D, inches (mm)	2.6 x 17.8 x 8.9 (67 x 450 x 225)	4.75 x 21.0 x 12.5 (121.0 x 533.0 x 318.0)	4.75 x 21.0 x 12.5 (121.0 x 533.0 x 318.0)
Net weight, lb (kg)	2.80lbs (1.26kg)	5.40lbs (2.45kg)	3.44lbs (1.56kg)
Shipping weight, lb (kg)	6.50lbs (3.00kg)	9.20lbs (4.17kg)	8.20lbs (3.72kg)
Environmental			
Operating temperature	32 - 113 °F (0 - 45 °C)		
Storage temperature	5 - 149 °F (-15 - 65 °C)		
Relative humidity	10 - 95%		
Operating elevation	0 -10,000 ft (0-3,000 meters)		
Storage elevation	0-50,000 ft (0-15,000 meters)		
Conformance			
Regulatory approvals	CE; FCC 47 CFR Part 15 Class A, ICES-003 Class A, AS/NZS CISPR 22, VCCI Class A, Low Voltage Directive 2014/35/EC, EMC Directive 2014/30/EC, RoHS Directive 2011/65/EU, UL 60950-1, CAN/CSA No. 60950-1-03		
Standard warranty	2 years		

1. NetBotz Room Monitor 756 is NetBotz Room Monitor 755 with 120/240V PoE Injector

2. Motion detection and other features may be limited when using non-NetBotz ONVIF cameras. Learn more at www.onvif.org

3. Data Center Expert v7.7 or higher is required for video surveillance functionality with NetBotz 750 and 755

4. NetBotz 750 and 755 appliances shipped to EU regions under enforcement of 2014/53/EU do not support wireless

Life Is On



Visit apc.com/netbotz to learn more
and explore the configurator tool.

132 Fairgrounds Rd
West Kingston, RI 02892
Phone: + 01 (401) 789-5735
www.apc.com

© 2025 Schneider Electric. All Rights Reserved. Schneider Electric | Life Is On, APC, and NetBotz are trademarks and the property of Schneider Electric SE, its subsidiaries, and affiliated companies. All other trademarks are the property of the respective owners.