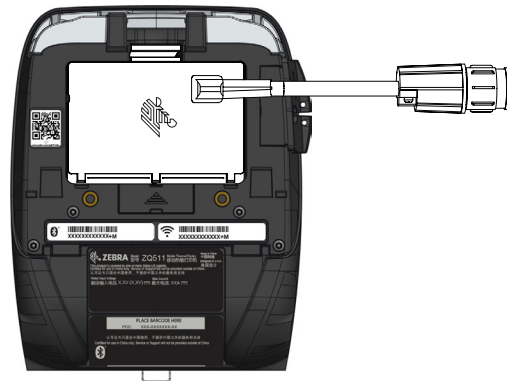


ZQ500 & ZQ600 Series Battery Eliminator



February, 2021

Zebra Technologies | 3 Overlook Point | Lincolnshire, IL 60069 USA
www.zebra.com

ZEBRA and the stylized Zebra head are trademarks of Zebra Technologies Corp., registered in many jurisdictions worldwide. All other trademarks are the property of their respective owners. © 2021 Zebra Technologies Corp. and/or its affiliates. All rights reserved.



1 - Safety, Cautions, & Regulatory

General Warnings and Cautions

- Caution: Read the following installation instructions before you connect the system to its power source.
- Note: Zebra Technologies Corporation is not liable for personal injury or damage to any equipment caused by the improper installation of this equipment to any power source.
- Caution: Only trained and qualified personnel should be allowed to install, replace, or service this equipment.
- Caution: Do not install the battery eliminator kit where it will be exposed to precipitation, extreme temperatures or excessive condensation.
- Caution: Ensure that the Power Supply has proper cooling. Do not place any padding or cushioning material under the unit or next to the back of the unit.

Regulatory Information

Regulatory Markings

Type-approval labels indicate compliance with country regulations. This product carries country-specific labels to indicate compliance.

Radio Frequency Interference Regulations

This device complies with Part 15 of the FCC Rules. Operation is subject to the following two conditions: 1) This device may not cause harmful interference and; 2) This device must accept any interference received including interference that may cause undesired operation.

Notification of Canadian Requirements

This Class B digital apparatus complies with Canadian ICES-003.

Cet appareil numérique de classe B est conforme à la norme NMB-003 du Canada.

2 - Specifications

Input Electrical Characteristics

Input Voltage Range	Input Frequency	Input Current
100~240Vac	50~60Hz	100Vac 50Hz

Output Electrical Characteristics

Output Voltage	Max. Over Voltage	Regulation	Min. Current	Rated Current
+8.0V	+12V	7.6-8.4V	0.0A	6.5A

Environmental Requirements

	Temperature	Humidity
Operating	0°C to +40°C (32°F to +104°F)	From 10% to 90% relative humidity (non-condensing)
Storage	-10°C to +55°C (14°F to +131°F)	From 10% to 95% relative humidity (non-condensing)

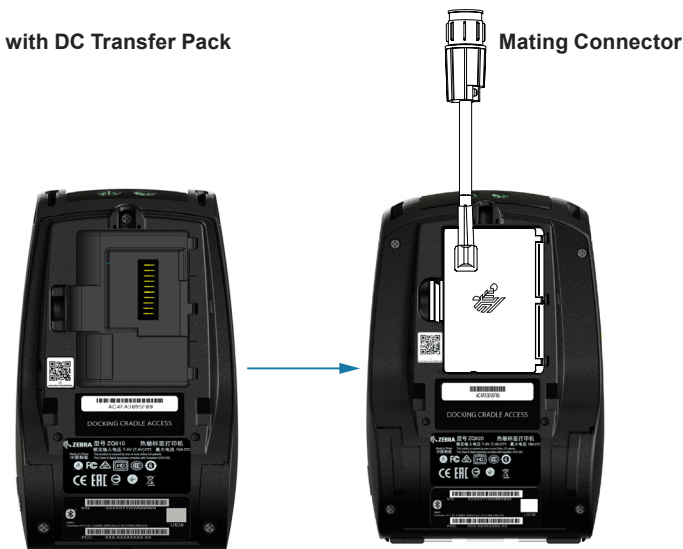
3 - Installing DC Transfer Pack

Installing the DC Transfer Pack in the Printer

The following instructions detail the installation for the components listed above, which will allow a ZQ500 and ZQ600 printer to run from a DC power source.

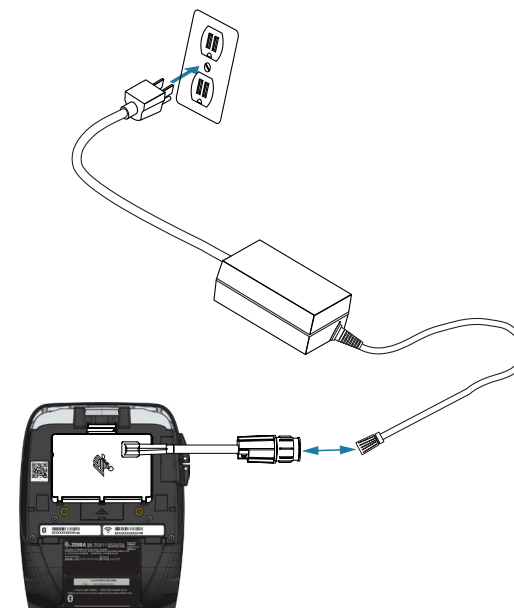
- Turn off the printer and remove the battery pack.
- Insert the DC Transfer Pack assembly into the printer. The DC transfer pack assembly installs like a normal battery.

ZQ610 with DC Transfer Pack

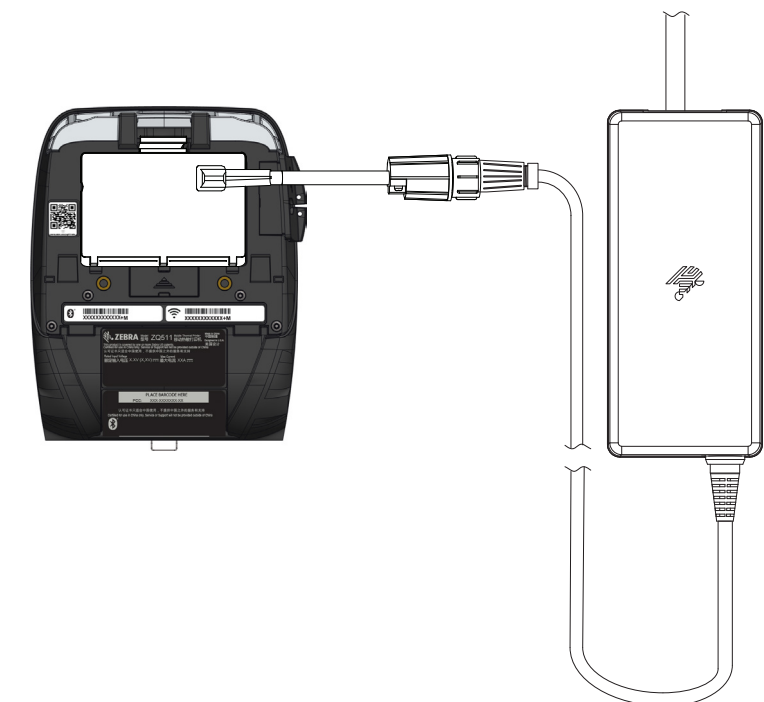


4 - Connecting to Power Supply

- Plug the DC cable from the Power Supply into the mating connector from the DC Transfer Pack. The plugs are polarized to ensure correct installation, meaning they can only be connected one way. Do not attempt to force a connection. Secure the connection by turning the locking ring on the DC cable connector until it clicks into place.
- Plug one end of the AC input cable into the Power Supply and the other end to AC wall outlet.



ZQ511 with Battery Eliminator



Note: The Battery Eliminator solution is only supported on the ZQ500 and ZQ600 Series printers.