



**ThinkSystem ST50
Type 7X48 and 7X49
Quick Start**



PN: SP47A37122
Printed in China

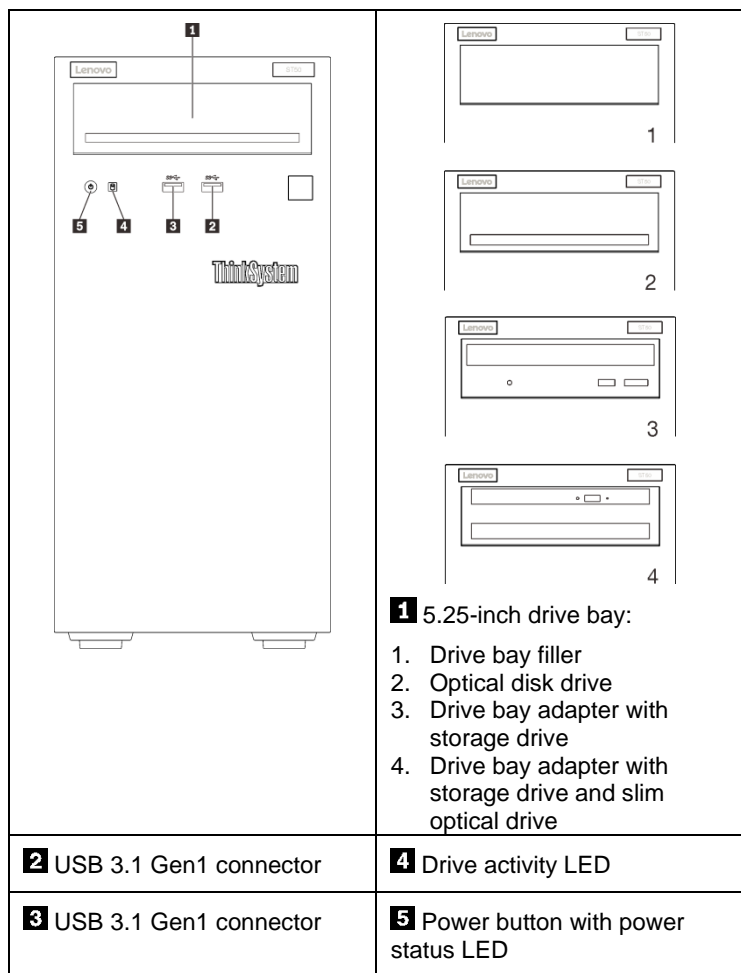
Your shipping box contains the following items:

- ST50
- Material box, including printed documentation

If any item is missing or damaged, contact your place of purchase. Ensure that you retain your proof of purchase and packing material. They might be required to receive warranty service.

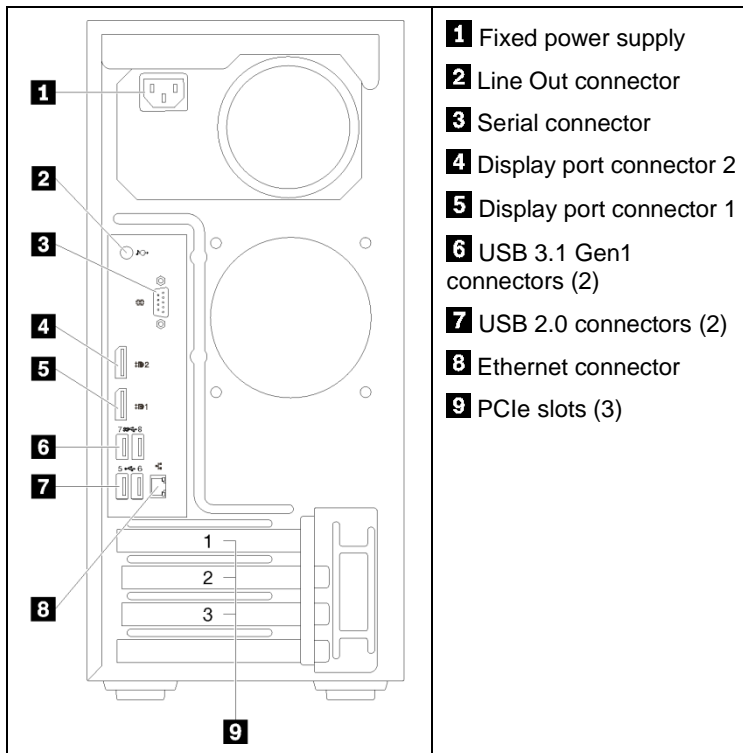
First glance

Server front view:



Note:
Depending on the configuration, the illustration above might differ slightly from your server.

Server rear view:



Setting up the System

1. Install the required server components.
2. Install the server into the rack if necessary. See the *Tower-to-rack Conversion Kit Installation Instructions* that was provided with the Tower-to-rack conversion kit.
3. Connect the cables.
4. Power on the server.
5. Configure the system.

For detailed information about installing hardware options and configuring the system, see the following website:
<http://thinksystem.lenovofiles.com/help/topic/ST50/introduction.html>



Reduce | Reuse | Recycle



Technical specifications

Dimensions and weight

- Height: 375 mm (14.76 inches)
- Width: 175 mm (6.89 inches)
- Depth: 407 mm (16.02 inches)
- Weight (depending upon configuration):
 - Maximum: 11.2 kg (24.69 lbs)

Processor

This server comes with the latest Intel® processor family, up to one processor from:

- Xeon® E3-21XX
- Xeon® E3-22XX
- Core i3
- Pentium Gold
- Celeron G

Memory

- Minimum: 8 GB
- Maximum: 64 GB
- DIMM types:
 - PC4-19200 (single-rank, dual-rank), 2400 MT/s, double-data-rate 4 (DDR4) unregistered DIMM (UDIMM)
 - PC4-21300 (single-rank, dual-rank), 2666 MT/s, double-data-rate 4 (DDR4) unregistered DIMM (UDIMM)
- Slots: four DIMM slots

Storage bays (depending on the model):

Supports up to four 2.5/3.5-inch SATA/SAS drive bays

- Up to three 2.5/3.5-inch non hot-swap SATA/SAS hard-disk or solid-state drives
- One 5.25-inch drive bay that supports one of the following options:
 - One 5.25-inch optical disk drive
 - One LTO/RDX tape drive
 - One 5.25-inch drive bay adapter with one storage drive
 - One 5.25-inch drive bay adapter with one storage drive and one slim optical drive

Where to go for support

Link	QR Code
 <p>Lenovo Press (Product guides and white papers)</p> <p>https://lenovopress.com/</p>	
 <p>Lenovo Datacenter Systems Forums</p> <p>https://forums.lenovo.com/t5/Datacenter-Systems/ct-p/sv_eg</p>	
 <p>Lenovo Support – ST50 (including drivers and software)</p> <p>https://datacentersupport.lenovo.com/products/servers/thinksystem/st50?linkTrack=QR</p>	
 <p>Lenovo Product Security Advisories</p> <p>http://support.lenovo.com/us/en/product_security/home</p>	
 <p>Lenovo Server Proven (Compatibility information)</p> <p>https://static.lenovo.com/us/en/serverproven/index.shtml</p>	

Third Edition (January 2021)

© Copyright Lenovo 2021.

LIMITED AND RESTRICTED RIGHTS NOTICE: If data or software is delivered pursuant to a General Services Administration (GSA) contract, use, reproduction, or disclosure is subject to restrictions set forth in Contract No. GS-35F-05925.