

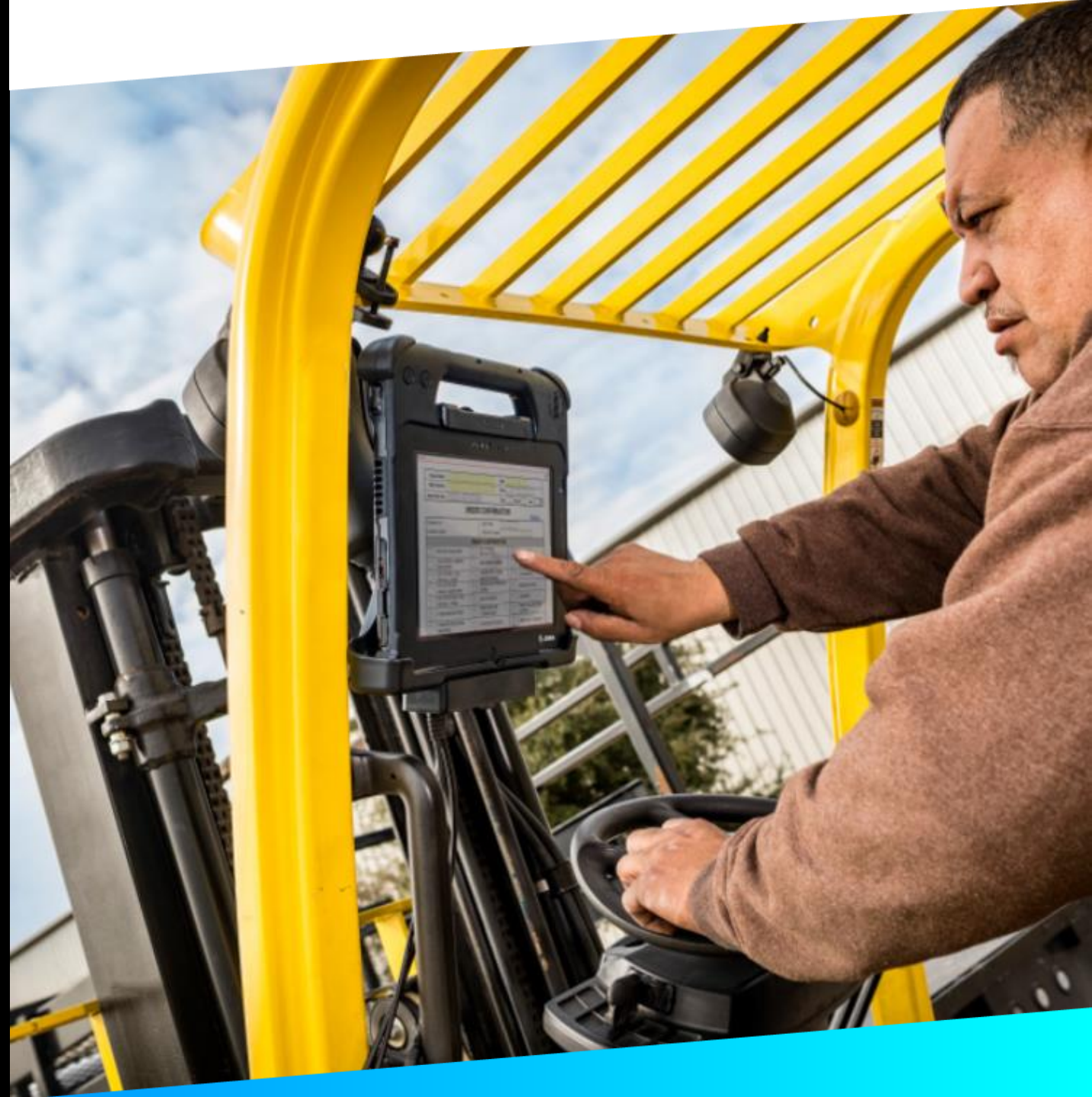


L10 Rugged Tablet Platform

Accessory & Options Guide

One Tablet Platform.
Many Accessories.
Countless Applications.

© 2021 ZIH Corp. and/or its affiliates. All rights reserved.



ACCESSORY & OPTIONS GUIDE INSTRUCTIONS

With the versatility of the L10 rugged tablet platform, there are as many opportunities as there are combinations of accessories and applications.

Use this guide to identify which accessories and options apply to your needs and assemble a lineup that will work perfectly for your unique workflow requirements.



TABLET OF CONTENTS

- Docking Solutions ----- 04
- Power ----- 09
- Vehicle Solutions ----- 16
- Input Devices ----- 25
- Carrying Cases ----- 35
- Other ----- 40

L10 Rugged Tablet Accessories

Docking Solutions

L10 Docking Solutions

L10 Industrial Dock



Part Numbers:

- CRD-L10-IND02 (with North America AC Line Cord)
- CRD-L10-IND03 (with Australia/New Zealand AC Line Cord)
- CRD-L10-IND04 (with EU AC Line Cord)
- CRD-L10-IND05 (with UK AC Line Cord)
- CRD-L10-IND06 (with Taiwan Line Cord)
- CRD-L10-IND07 (with Japan Line Cord)

The Industrial Dock combines the L10 Vehicle Cradle and a sturdy desk stand to hold your Zebra rugged tablet in place. Perfect for touch applications in the plant, warehouse, or office. The dock provides power to the tablet and has two USB ports for expanded connectivity. Add on an optional 4K port replicator to gain four USB 3.0 and 2 USB 2.0 ports, DVI, DisplayPort or HDMI, Gigabit Ethernet, microphone in, Stereo speaker out, and security lock slot.

Key Features:

- Sturdy industrial dock holds the rugged tablet in place while protecting it against drops and other tough usage
- Includes xDIM G3 Docking Interface Module, which provides power to the tablet, and two USB ports for attaching a keyboard or other peripherals
- 4K port replicator sold separately
- 1-year warranty

L10 Docking Solutions

L10 Industrial Dock



Part Numbers:

- CRD-L10-IND02 (with North America AC Line Cord)
- CRD-L10-IND03 (with Australia/New Zealand AC Line Cord)
- CRD-L10-IND04 (with EU AC Line Cord)
- CRD-L10-IND05 (with UK AC Line Cord)
- CRD-L10-IND06 (with Taiwan Line Cord)
- CRD-L10-IND07 (with Japan Line Cord)

Specifications:

INDUSTRIAL DOCK:

- Dimensions (L x W x H): 9.25 x 11.9 x 14.1 in (23.5 x 30.0 x 35.8 cm)
- Weight: 4.8 lb (2.18 kg)

L10 Docking Solutions

L10 Office Dock



Even mobile workers need to be in the office at some point. With the Office Dock, it is easy to transform your Zebra L10 rugged tablet into a full desktop configuration complete with HDMI and VGA video connections; 2 USB 3.0 ports, 2 USB 2.0, headphone, mic, and Gigabit Ethernet. Charge a spare standard battery or extended battery in the optional battery charger. The 120 watt AC adapter ensures both the tablet battery and the spare battery charge simultaneously. The L10 office dock has tablet alignment features designed for easy, one-handed insertion into the dock, and the dock can be securely mounted to the desk. (Compatible with Windows L10 Platform models and Android** models)

Key Features:

- Attractive desktop profile
- Wide array of connectivity options
- Keep a spare battery charged and ready to extend the day
- Dock can be securely mounted to surfaces
- 1-year warranty

Part Numbers:

Dock with Spare Battery Charger

- 300148 (with North America AC Line Cord)
- 300162 (with Australia/New Zealand AC Line Cord)
- 300163 (with EU AC Line Cord)
- 300164 (with UK AC Line Cord)

Part Numbers:

Dock without Spare Battery Charger

- 300147 (with North America AC Line Cord)
- 300159 (with Australia/New Zealand AC Line Cord)
- 300160 (with EU AC Line Cord)
- 300161 (with UK AC Line Cord)

** Android Compatibility:

- Must have Zebra Android update 06 (01-23-18.00-OG-U06-STD)
- Ethernet on dock will not function
- USB 3.0 in dock only run at USB 2.0 speeds
- Must use Displaylink Android application for external video, accommodates only one external display, HDMI takes precedence

L10 Docking Solutions

L10 Office Dock



Back view showing optional battery charger (top) and I/O connectivity (bottom)

Part Numbers:

Dock with Spare Battery Charger

- 300148 (with North America AC Line Cord)
- 300162 (with Australia/New Zealand AC Line Cord)
- 300163 (with EU AC Line Cord)
- 300164 (with UK AC Line Cord)

Part Numbers:

Dock without Spare Battery Charger

- 300147 (with North America AC Line Cord)
- 300159 (with Australia/New Zealand AC Line Cord)
- 300160 (with EU AC Line Cord)
- 300161 (with UK AC Line Cord)

Specifications:

- Available with or without **battery charging bay**
 - **Connectivity:**
 - 2 USB 3.0 Dock Powered
 - 2 USB 2.0 Tablet Powered
 - **Video:**
 - Dual monitor Support
 - HDMI Type A - Full HD
 - VGA - Full HD
 - Headphone Out - 3.5 mm
 - Mic In - 3.5 mm
 - RJ45 Gigabit Ethernet
 - DB9 Serial
 - Optional Battery Charging Bay for standard battery or extended battery
 - Kensington® Lock Slot
- **Secure Installation Option:**
 - 4 threaded inserts on bottom (M3 screw type)
 - **Weight and Dimensions:**
 - Dock:** 249 Deep (±2.0) x 323.5 W (±2.0) x 236 H (±2.0)(mm); 2.10 (±0.20) kg
 - Charger:** 142.51Deep (±0.50) x 181.6 W (±0.50) x 34.8 H (±0.30)(mm); .250 (±0.025) kg

** Android Compatibility:

- Must have Zebra Android update 06 (01-23-18.00-OG-U06-STD)
- Ethernet on dock will not function
- USB 3.0 in dock only run at USB 2.0 speeds
- Must use Displaylink Android application for external video, accommodates only one external display, HDMI takes precedence

L10 Rugged Tablet Accessories

Power

L10 Power

L10 Extended Life Battery: 98Whr



Part Numbers:

450149 (L10 Extended life battery, 98 WHr)

The **Extended Life Battery** is ideal for workers who are in the field for long periods of time, or for rugged tablets utilized around-the-clock for shift work. It powers L10 rugged tablets **up to 25 hours on a single charge**. This battery pack attaches to the tablet using the battery bracket kickstand.

Key Features:

- Large 98 Whr Lithium-ion battery keeps tablet powered for up to 25 hours (Mobilemark 14)
- External LED indicates approximate remaining battery life
- Hot swappable

Specifications:

- Requires battery bracket kickstand
- Dimensions contained within kickstand; kickstand increases thickness increase 0.78 in (0.2cm)
- 1-year warranty

L10 Power

L10 Standard Battery: 36 Whr



Part Numbers:

450148 (L10 36 Whr Standard Battery)

450173 (L10 36 Whr ATEX IECEx Standard Battery)

Never be caught without power when you need it most. An **additional battery** is the perfect companion when working in the field. This hot-swappable battery can be charged while in the rugged tablet or while in the battery charging slot provided in the L10-Series Docking Station. The battery's handy power meter takes the guesswork out of determining available battery life. The tablet's hot-swappable battery capability allows you to continue with your mission-critical application without shutting down the system to change the battery.

Key Features:

- Lithium-ion battery with 36 WHr capacity keeps tablet powered for up to 9.5 hours (Mobilemark 14).
- External LED indicates approximate remaining battery life
- Hot-swappable 36 Whr battery 0.36 lb (0.17 kg)
- ATEX-certified option available
- 1-year warranty

L10 Power

L10 Kickstand / Extended Battery Bracket



Part Numbers:

410056 (L10 Kickstand Extended Battery Bracket kit)

The kickstand conveniently holds your Zebra L10 rugged tablet upright for easy reading and touch while in the field and when using the Companion Keyboard . When you are ready to start walking, the kickstand folds away. An integrated battery bracket holds the extended battery for when you need up to 27 hours of battery life. The kickstand/bracket does not need to be removed when docking in the Vehicle, Office, or Industrial docks. It can also be used in combination with the optional Soft Handle and Stylus pen accessory set.

Key Features:

- Holds tablet upright for easy reading and touch interactions and easy use with Companion Keyboard
- Compatible with all L10 docks
- Easily stowed for convenience while on the move
- Excludes standard onboard stylus
- Compatible with top handle and top handle stylus accessory options
- 90-day warranty

L10 Power

L10 Kickstand / Extended Battery Bracket



Specifications:

- Weight: 0.64 lb (0.29 kg)
- Thickness increase 0.78 in (0.2cm)
- Adjustable viewing angle
- **Compatible** with Extended battery, Keyboard, Office Dock, Vehicle Dock, Industrial Dock
- **Not Compatible** with KickStrap, Pass-Through Antenna

Part Numbers:

410056 (L10 Kickstand Extended Battery Bracket kit)

L10 Power

L10 Single Bay Spare Battery Charger



Part Numbers:

Dock with Spare Battery Charger

- 450150 (Power, L10 Battery Charger with AC Adapter US)
- 450170 (Power, L10 Battery Charger with AC Adapter AU)
- 450171 (Power, L10 Battery Charger with AC Adapter EU)
- 450172 (Power, L10 Battery Charger with AC Adapter UK)

Ensure maximum power and uptime for your most critical mobile technology tool: your Zebra L10 rugged tablet. This Single Bay Battery Charger will keep your battery powered up for maximum performance. Compatible with both Standard (36 Whr) and Extended Life (98 Whr) L10 Platform Batteries.

Key Features:

- Rugged design stands up to the critical demands of industrial use
- Can be integrated into the office dock or used as a stand-alone charger.
- Charges either Standard 36 WHr or Extended Life 98 Whr
- Standard Battery charge time: 2.75 Hrs
- Extended Life Battery charge time: 3.25 Hrs
- Includes power adapter
- LED Indicator light for charging status
- 1-year warranty

L10 Power

Power Adapter



Part Numbers

450154 (Tablet / Battery charger Power Supply)
450020 (Industrial Dock Power Supply)
450165 (Office Dock Power Supply)

Avoid forgetting your AC Power Adapter and power cord (IEC 320 C5) when traveling or working from home! A second AC Power Pack provides the convenience of working from multiple locations without the fuss of packing up the power sources for your rugged tablet PC. The AC Power Pack is great for travel.

Note: All L10 Android devices ship with a US Line Cord (450040). Order an additional country specific AC Line Cord when using L10 Android devices in other countries.

Part Numbers

AC Line Cord for Tablet / Battery Charger (450154) and Industrial Dock Power Supply (450020) only

450040 (US)
450047 (AU/NZ)
450042 (EU)
450041 (UK)
ACC-L10LINECORD-CN
ACC-L10LINECORD-TW
ACC-L10LINECORD-JP
ACC-L10LINECORD-IN

Part Numbers

AC Line Cord for Office Dock Power Supply (450165) only

450043 (US)
450046 (AU)
450044 (EU)
450045 (UK)
50-16000-669R (India)

L10 Rugged Tablet Accessories

Vehicle Solutions

L10 Docking Solutions

L10 Vehicle Dock - Cradle



Cradle Only

Part Numbers:

- 300139 (Cradle only)
- 300140 (xDIM Module G3, Cigarette Lighter Adapter)
- 300142 (L10 Vehicle Dock - Cradle, xDIM, CLA)
- 300144 (L10 Vehicle Dock - Cradle, RF Pass Through, xDIM, CLA)
- 350025 (RAM Forklift Mounting Kit)
- 241372 (ProClip Keyboard Mount – Must order direct from ProClip)

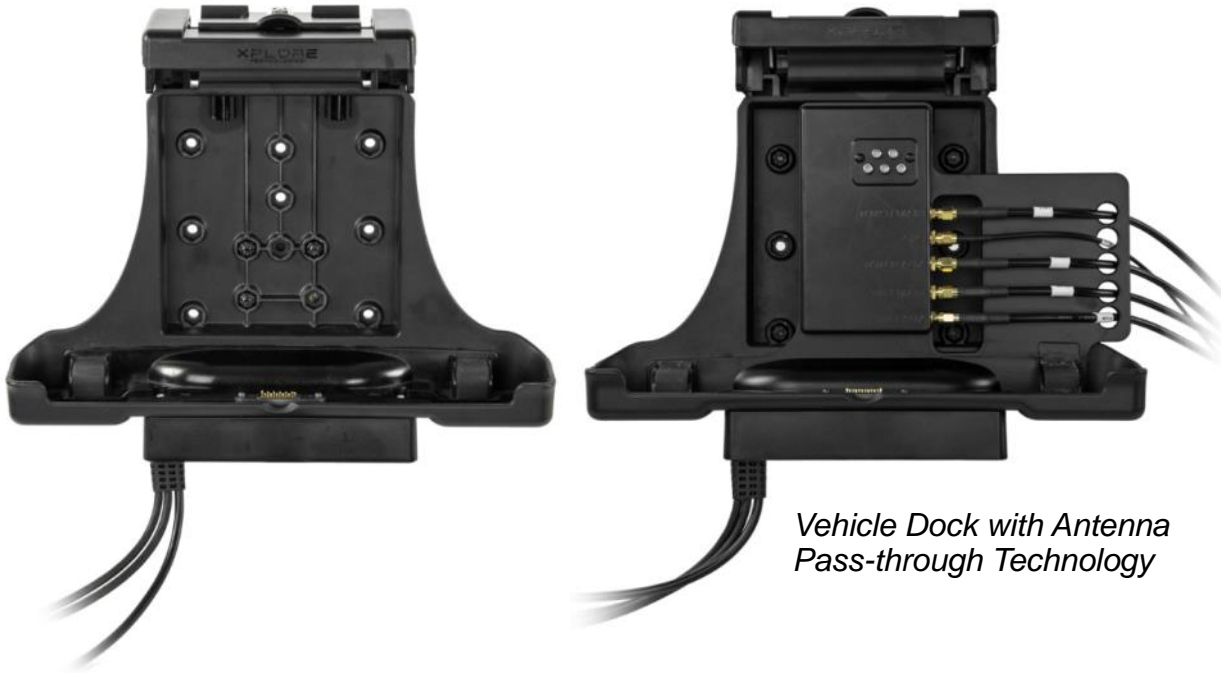
The L10 Vehicle Dock protects and secures the XBOOK L10 2-in-1 laptop / tablet, XSLATE L10 slate tablet, and XPAD hard-handle tablet under heavy shock and vibration. This rugged, lightweight vehicle cradle also withstands the bumps and turns of the road while keeping the tablet steady for navigational use. Once workers reach their destination, the “Grab and Go” design allows for quick, one-handed tablet undocking. The optional xDIM G3 Docking Interface Module powers the tablet via a cigarette lighter port or optional hard-wired connection. xDIM G3 has 2 USB 2.0 ports to connect peripheral devices to the tablet. (Cradle is compatible with L10 rugged tablet models only)

Key Features:

- Holds rugged tablet in place under extreme vibration and stress
- Barrel-style keylock used to lock tablet into place for secure vehicle docking, two keys included, all keyed alike
- 4 each 10-32 X 1.5” bolts and Nylock nuts included, VESA 100 X 100, 100 X 50 and AMP 38 X 30 mounting hole patterns
- Easy one-hand release allows for fast “grab and go” transitions between the vehicle, field, and office
- Resistant to water and dust ingress
- 1-year warranty

L10 Docking Solutions

L10 Vehicle Dock - Cradle



Vehicle Dock with Antenna Pass-through Technology

Part Numbers:

- 300139 (Cradle only)
- 300142 (L10 Vehicle Dock - Cradle, xDIM, CLA)
- 300144 (L10 Vehicle Dock - Cradle, RF Pass Through, xDIM, CLA)
- 350025 (RAM Forklift Mounting Kit)
- 241372 (ProClip Keyboard Mount – Must order direct from ProClip)

Specifications:

- **Water/Dust-Resistant Dock:** IP55 (Rating applies when tablet is installed and xDIM G3 is in vertical position)
- **Shock and Vibration:** Minimum Integrity Vibration: Category 24 | Unit is not operating (Tablet with Dock and Vehicle Kit) | MIL-STD-810G, Method 514.6, Procedure I
- **Vehicle Vibration:** Unit is operating (Tablet with Dock and Vehicle Kit) | MIL-STD-810G, US Highway Truck and Composite Wheel, Method 514.6C-1 and 514.6C-3
- **Functional Shock:** 40 g operating (peak); 11 ms, saw tooth 6+/- shocks x 3-axis=18 shocks | MIL-STD-810G, Method 516.6, Procedure I
- **Dimensions:** (L x W x H): 3.0 x 11.9 x 9.7 in (7.6 x 30.1 x 24.7 cm)
- **Weight:** 2.0 lb (0.94 kg)
- **MIMO WWAN, MIMO WLAN, GPS antenna pass-through** for improved in-vehicle throughput (PN: 300144)

L10 Docking Solutions

xDIM G3 Docking Interface Module



Part Numbers:

300139 (Cradle only)

300140 (xDIM Module G3, Cigarette Lighter Adapter)

Purpose-built for harsh, demanding environments, the xDIM G3 docking interface module provides power and connectivity to the L10 Vehicle Dock and rugged tablet. (xDIM G3 is compatible with L10, Bobcat, B10, D10 rugged tablet models)

Key Features:

- The xDIM G3 uses the rugged tablet to power the dock's built-in USB ports. Two xDIM USB ports continue to function if external power is lost.
- Extremely durable resin enclosure
- Water resistant (IP55) for use outdoors or any wet environment
- Docking connector protected by perimeter gasket
- Can be hard wired to vehicles using optional power cable kit
- Cigarette Lighter Adapter included, runs directly on 12-volt system, no need for DC to DC converter
- USB cables can be terminated in dry area of the vehicle
- xDIM USB 2.0 ports have increased power for transient events to support peripherals that exceed USB 2.0 power consumption. Supports 1.6 amps on 1 USB port for no more than 1 second.
- 2 USB 2.0 ports to connect peripheral devices
- 1-year warranty

L10 Docking Solutions

xDIM G3 Docking Interface Module



Part Numbers:

- 300139 (Cradle only)
- 300140 (xDIM Module G3, Cigarette Lighter Adapter)
- 300142 (L10 Vehicle Dock - Cradle, xDIM, CLA)
- 300144 (L10 Vehicle Dock - Cradle, RF Pass Through, xDIM, CLA)

Specifications:

- **Meet high vibration environments** - MIL-STD-810G Composite Wheel and US Truck
- Operating -20° to 60°C / -4° to 140°F
- DC IN (12-14VDC), CLA included to connect direct to 12 volt vehicle system, no DC converter required, save 100\$ of dollars in installation cost
- Dimensions (L x W x H): 1.7 x 5.9 x 1.5 in (4.3 x 15.0 x 3.8 cm)
- Weight: 0.75 lb (0.34 kg)
- 1-year warranty

Tests & Descriptions:

- **Minimum Integrity Vibration**
 - Category 24
 - Unit is not operating (Tablet with Dock and Vehicle Kit)
 - MIL-STD-810G, Method 514.6, Procedure I
- **Vehicle Vibration Testing**
 - Unit is operating (Tablet with Dock and Vehicle Kit)
 - MIL-STD-810G, US Highway Truck and Composite Wheel, Method 514.6C-1 and 514.6C-3
- **Functional Shock**
 - 40G (peak), 11 ms, saw tooth, 6+/- shocks x 3-axis= 18 shocks
 - 40G not operating (Tablet and Dock)
- **E-mark 12 V system**
 - ECE Radiated Emissions
 - E-Mark Immunity Pulse transient certified

L10 Vehicle Power

In-Vehicle Power Supplies for Tablet Only



Whether a standard or a custom mobile power solution, you can trust a Lind solution to be designed and manufactured to industry-leading standards. Lind products boast a failure rate of .02% — the best in the industry.

Also, see other various accessory part numbers below to fully enable and optimize your In-Vehicle Computing Solution.

Part Numbers:

- 450140 Lind Cigarette Lighter Adapter (CLA) Kit for 12-16V (Used for Tablet Only)
- 450141 Lind Cigarette Lighter Adapter (CLA) Kit for 12-32V (Used for Tablet Only)
- 450151 Direct Wire Power Adapter Kit for 20-60V (Used for Tablet Only)
- 450139 Direct Wire Power Cable, with inline fuse
- 450134 Direct Wire Power Cable
- 450142 Lind Replacement Cigarette Lighter Adapter (CLA) Cable
- XP2035-2396 Lind Cigarette Lighter Adapter (CLA) Kit for 12-32V (3rd party)

L10 Power

In-Vehicle Power Converters for Connecting Vehicle Cradles



*Vehicle Power DC Converter
(50-150V or 9-60V)*



Direct Wire Power Cable Kit



*Havis Charge-Guard
Auto Shutoff Timer*

Features:

- Typically used with electric forklifts
- Accepts vehicle power and converts to 13.2V output
- IEC 60068 Vibration, Shock, Bump, and Salt Mist tested
- Requires Direct Wire Power Cable Kit (300039)
- Automatic Power Shutoff Timer Available

Part Numbers:

- 450012 Auto Shut-down Timer
- 450019 Cigarette Lighter Adapter (CLA) 12-32V (Used for Vehicle Dock Only)
- 450134 Direct Wire Power Cable
- 300039 Direct Wire Power Cable Kit to Vehicle Docks
- 450083 Vehicle Power DC Converter 9-60V (Used for Vehicle Dock Only)
- 450084 Vehicle Power DC Converter 50-150V (Used for Vehicle Dock Only)
- CG-X (3rd Party) Havis Charge-Guard Auto Shutoff Timer

L10 Docking Solutions

Gamber-Johnson Vehicle Cradles



Docking solutions for customers who need multiple I/O ports for their vehicle installation.

Features:

- Operating Temperature -20° to 60°C / -4° to 148°F
- Docking Station design accommodates the L10 Extended battery, Smart Card/CAC Reader module, True Serial (RS232) module, Hard handle, Soft handle, and Shoulder Strap
- LED indicator lights show when "tablet is docked" and "dock is powered"
- RS232 pin 9 function switch, activate switch to power pin 9 (5V)
- VESA 75mm and 50 x 100mm mounting patterns
- Keyed alike lock for security and theft deterrence

Connectivity

The docking stations provide multiple ports which are different for L10 Android and L10 Windows.

	Serial RS232	HDMI	VGA	Power In	USB 2.0	USB 3.0	Ethernet RJ45	Pass Through Antenna	Audio Out	Audio In
Windows	•	•	•	•	3	2	•	Option	•	•
Android	•	-	-	•	3	2	-	Option	•	•

Part Numbers:

Cradles

- CRD-L10W-XVEHCOMS11-01 (L10 Windows)
- CRD-L10W-XVEHCOMS21-01 (L10 Windows with 5x RF-SMA)
- CRD-L10A-XVEHCOMS11-01 (L10 Android)
- CRD-L10A-XVEHCOMS21-01 (L10 Android with 5x RF-SMA)

Part Numbers:

Power Supplies

- PWRS-L10GJ-12.32VDC-1-01 (12-32 VDC isolated power adapter)
- PWRS-L10GJ-20.60VDC-1-01 (20-60 VDC isolated power adapter)
- PWRS-L10GJ-12.16VDC-1-01 (12-16 VDC auto power adapter - not for fork trucks)

Note: These products are not warranted, supported or serviced by Zebra.

L10 Antenna

LTM502 Antenna by Mobile Mark



Mag-Mount Option (Magnetic)

Part Numbers

For L10 Windows

LTM502-3C3C3C3C2C-BLK-180

MLTM502-3C3C3C3C2C-BLK-180 (Mag-Mount)

For L10 Android

LTMG9313C3C3CW3CG2CWHT180SP580

MLTMG9313C3C3CW3CG2CWT180SP580 (Mag-Mount)

LTM502 5-cable - Global LTE MIMO, WiFi MIMO & GPS Antenna

Recommended for Antenna Pass-Through Configurations: Mobile Mark's LTM502 Series Multiband Diversity/MIMO antenna contains five separate antennas, all in one compact antenna housing. The broadband LTE/Cellular element covers all LTE frequencies worldwide, from 694-3700 MHz.

The LTM502 antenna is ideal for installations on trucks where closed cabins shield the radio wave.

Key Features

- Five Antennas
 - L10 Windows:** two for Global Cellular/LTE, two for WiFi, and one for GPS
 - L10 Android:** three for Global Cellular/LTE, one for WiFi, and one for GPS
- Covers all Cellular & LTE frequencies worldwide, from 694 MHz to 3700 MHz
- Easy installation: single mounting hole or magnetic mount.

Visit **Mobile Mark** for [more information](#).

Note: This products is available from Mobile Mark and is not directly sold, warranted, supported or serviced by Zebra.

L10 Rugged Tablet Accessories

Input Devices

L10 Input Devices

Rugged L10 Companion Keyboard



Rugged IP65 keyboard with backlighting

420095 (Rugged Companion Keyboard – US)
420096 (Rugged Companion Keyboard – UK)
420097 (Rugged Companion Keyboard – DE)
420098 (Rugged Companion Keyboard – FR)
420099 (Rugged Companion Keyboard – ES)

Submitting reports from the vehicle or job site is a snap with this full travel, tactile feedback, IP65 protected and backlit keyboard. The touchpad supports two-finger and three-finger gestures. The Companion Keyboard closes over the display glass like a laptop. When it's time to snap your Zebra tablet into a dock, the keyboard detaches easily.

Key Features:

- The Companion Keyboard offers a 2-in-1 laptop / tablet experience so that you can enjoy both the mobility of a tablet and notebook-style support for data-intensive tasks
- Easily removable keyboard when docked
- Full travel tactile feedback keyboard
- No need to charge the keyboard; it is powered by the Zebra tablet
- Fully sealed with IP65
- Closes to cover tablet display glass for added protection and convenience
- 1-year warranty

L10 Input Devices

L10 Companion Keyboard and Rugged (IP65) Backlit Companion Keyboard



Specifications:

- Weight 0.92 lb (0.42 kg)
- 10.7 x 7.2 x 0.32 in (27.2 x 18.3 x 0.8 cm)
- **Available in the following languages:**
 - US English
 - UK English
 - German
 - French
 - Spanish

Part Numbers:

- 420095 (Rugged Companion Keyboard – US)
- 420096 (Rugged Companion Keyboard – UK)
- 420097 (Rugged Companion Keyboard – DE)
- 420098 (Rugged Companion Keyboard – FR)
- 420099 (Rugged Companion Keyboard – ES)



Keyboard in closed position via magnets, protecting display glass

L10 Input Devices

L10 Optional Modules: Smart Card / CAC Reader



Note: Must be ordered at the time of tablet purchase (factory installed)

Part Numbers:

210117, 210123, 210132, 210417, 210436, 210377, 210376

Available as an enclosed module FIPS 140-2 compliant – ideal for government, military, and other security-conscious organizations
Supports the following asynchronous and synchronous smart card interfaces:

- Complies with all sections of ISO7816 (both T=0 and T=1 asynchronous card supported)
- EMV2000 (EMV 4.1) compatible
- Complies with PC Smart Card industry standard: PC/SC1.0 and PC/SC 2.0
- Supports 2-wire, 3-wire, or I2C Interface synchronous card
- Atmel: AT88sc1608, AT88sc153
- Atmel: AT24c128, AT24c256
- ST: M14C16, M14C04
- Siemens 2-wire link protocol: sle4432/42
- Siemens serial 3-wire bus: sle4418/28
- Configurable hardware auto error detection
- Supply Voltage for Card: 5V, 3V, 1.8V
- Supports Class A/Class B/Class C operating class as defined in ISO/IEC 7816-3:1997 and ISO/IEC 7816-3:1997/Amd 1:2002.

L10 Input Devices

L10 Windows Optional Modules: True Serial (RS232)



Note: Must be ordered at the time of tablet purchase (factory installed)

Part Numbers:

210146, 210147, 210149, 210124,
210133, 210134, 210135, 210136, 210125

This module adds True Serial capability to your Zebra L10 rugged tablet. It connects from the multi-function port to your legacy Serial equipment using a DB9 adapter. For L10 Windows only.

L10 Input Devices

L10 Optional Modules: UHF RFID Reader (AEI)



Part Numbers:

210496
210386

Note: Must be ordered at the time of tablet purchase (factory installed)

The UHF RFID Reader is a mobile solution designed specifically for Zebra L10 rugged tablets. This solution delivers the mobility and productivity of a handheld RFID Reader device with the flexibility and functionality of a powerful computer. The UHF RFID (AEI) reader meets safe distance requirements for rail while adding mobility advantages over fixed readers.

Key Features:

- Adds UHF RFID functionality to the Zebra L10 rugged tablet
- Lightweight
- No external power supply required
- APIs available for custom software development

Specifications:

- Read range up to 3m (Tag Dependent)
- Two frequency ranges
 - 866.7MHz (Supports ISO 18000-6B, -6C)
 - 912-925MHz (Supports AEI, EPC Class 1 Gen 1, EPC Class 1 Gen 2, ISO 18000-6B, -6C)
- Operating Temperature: -20 °C to 60 °C (-4 °F to 140 °F)
- Storage Temperature: -30 °C to 70 °C (-22 °F to 158 °F)
- Device peak power consumption: 4w
- RF max power: .05w

L10 Input Devices

L10 Digitizer Pens - Long



Long Active Pen:

This compact digitizer Pen provides precision and comfort when you need to write and annotate on your Zebra L10 tablet. The attached tether keeps the pen and rugged tablet together to prevent loss. Write on your tablet with the ease of standard paper and pencil. The digitizer pen stores easily in the integrated garage of the XPAD L10 or the soft handle garage of the XSLATE L10 and XBOOK L10. **Part Number:** 440036 (Pen) and 440042 (stylus tip replacement kit)



Long ePen:

Designed to fit in the pen garage on the top handle of your XPAD L10 rugged tablet, this powered pen features a 1.5 mm tip that provides pinpoint accuracy for easy writing and annotation on your tablet and enables pressure sensitivity. AAAA battery included. **Part Number:** 440043

L10 Input Devices

L10 Digitizer Pens - Short



Short Active Pen with Tether:

Designed to fit in the pen garage on the side of the XSLATE L10 and XBOOK L10 tablets, this compact digitizer pen offers precision and comfort when you need to write and annotate on your L10 tablet. The attached tether keeps the pen and tablet together to prevent loss. Write on your L10 tablet with the ease of standard paper and pencil. **Part Number:** 440037 (Pen) and 440042 (stylus tip replacement kit)

Short Passive Pen with Tether:

Designed to fit in the pen garage on the side of the XSLATE and XBOOK L10 tablets, the compact Passive Pen provides precision and comfort to write and annotate on your L10 tablet. **Part Number:** 440007

L10 Input Devices

USB Keyboard



Part Numbers:
420009

This durable USB Keyboard by iKey easily connects to any Xplore Tablet PC providing a functioning 104/105 key typing experience for all desktop and word-processing environments. With its ergonomically designed wrist pad and integrated touch pad, the keyboard provides a comfortable user experience in a compact size.

Key Features:

- Compact, lightweight, slim and durable design makes this keyboard easy to travel with or use at your desk
- Integrated touch pad pointing device and mouse buttons
- 88/89 keys keyboard with embedded numeric keypad and 12 dedicated function keys
- Elegant wrist pad for comfortable support and rest
- 2 programmable buttons
- Full functions of 104/105 key enhanced layout

Color: Black

Dimensions: 289mm(L) x 227mm(W) x 27mm(H)

Weight: 0.72 kg

Warranty: 90 days

L10 Input Devices

USB Keyboards



VC USB Keyboard QWERTY

Part Numbers:

KYBD-QW-VC-01 VC USB Keyboard QWERTY

KYBD-AZ-VC-01 VC SB Keyboard AZERTY

Required:

A9183902 USB Cable

VC USB Keyboard - Key Features:

- Based on the VH10 keyboard design
- 12 direct Function keys with an additional 12 via shift function
- Dimmable backlit keys
- IP66, -30 to +50 C, condensing – for use in Freezer Applications
- Heated board and drainage system for condensing environments
- Field replaceable elastomer and cable
- Works with Zebra's high-end performance products

L10 Rugged Tablet Accessories

Carrying Cases

L10 Carrying Cases

L10 KickStrap



Part Numbers:
410055 (L10 KickStrap kit)

This combined **Kickstand and Rotating Hand Strap** provides working comfort for all Zebra L10 rugged tablet models in the field and at a desk. The integrated Kickstand closes tightly when workers are on the move, enabling access to the Rotating Hand Strap, which can be adjusted for hand size as well as unique rotation angle.

Key Features:

KICKSTAND:

- The rigid design provides great ergonomics for reading and touch screen interactions while the tablet is on flat surfaces or while the Companion Keyboard is attached.
- Thickness increase 0.9 in (2.3 cm)
- Weight 0.55 lb (0.25 kg)
- Display angle: User adjustable

ROTATING HANDSTRAP:

- Easy to use while walking
- Adjustable to hand size
- Detents help lock desired rotation angle
- Great for Distribution, Transportation

Compatible with Companion Keyboard, Top Handle, Option modules (RFID, Smart Card Reader / CAC)

Not Compatible with extended battery option, Kickstand

90-day warranty

L10 Carrying Cases

L10 Soft Handle



Part Numbers:

410052 (L10 Soft Handle w/Coiled tether, without Pen)

410061 (L10 Soft Handle Kit – Active Stylus)

410062 (L10 Soft Handle Kit – ePen)

This integrated handle – which attaches to the top of the tablet – allows users to carry the tablet without the worry of dropping it. The soft handle is manufactured with smooth durable rubber, providing maximum grip without sacrificing comfort. The handle contains a pen storage slot suitable for either of the long L10 pens. A detachable shoulder strap, available separately, attaches to the handle for carrying long distances and freeing up hands.

Specifications:

- **Color:** Black
- **Dimensions and Weight:**
 - Length: 16 inches (405 mm)
 - Width: 1.125 inches (28mm)
 - Weight: 1.4 oz (40 grams)

L10 Carrying Cases

L10 Shoulder Strap



Part Numbers:
410057 (L10 Shoulder Strap)

The shoulder strap includes brackets to attach to Zebra XPAD or XSLATE L10 tablets. It is ideal for hands-free, long-distance carrying, and it is adjustable for height. The wide strap enhances comfort and can be easily attached and detached via clips.

Key Features:

- Increases user comfort and endurance while standing and walking
- Allows use of both hands while carrying the tablet
- 90-day warranty

Specifications:

- Adjustable to maximum length of 4.1 ft (1.28 m)
- Strap width 1.5 in (3.8 cm)

L10 Carrying Cases

L10 Carry Case



Part Numbers:

410059 (L10 Carry Case - XPAD)

410058 (L10 Carry Case - XSLATE)

The L10 Carry Case is a professional-grade carrying case designed specifically for your L10-Series Tablet. The integrated handle and optional attachable shoulder strap provide a variety of carrying options. Provides convenient storage for digitizer pens. The L10 Carry Case allows users to easily carry and access their Tablet in the field – computing while standing or walking for mobile professionals who are always on the go.

Key Features:

- Professional quality
- Integrated handle for enhanced portability
- Lightweight
- Support for attachable shoulder strap (sold separately)
- Digitizer pen holders (2) for easy storage
- Easy access to power button, both cameras and ports

L10 Rugged Tablet Accessories

Other

L10 Other Accessories

L10 Screen Protector



The L10 Shatter-Resistant Screen Protector Film is an anti-glare, thin protective film with a coating designed to reduce reflections and give a clear, sharp display view even in brightly-lit conditions. The screen protector works with touch screen and digitizer pen displays to offer additional protection against everyday scratches. Standard on all Zebra L10 models. Available in a 3-pack for replacement of originally-installed screen protector.

Part Numbers:
Contact Zebra for product availability

L10 Other Accessories

Screen Cleaning Cloth



Keep your display clean and smudge free with an approved wiping cloth. These cloths are especially designed to remove dirt and skin oils without damaging the display surface.

Part Numbers:
400025 (Screen Cleaning Cloth)



Contact

Zebra Technologies Corporation
3 Overlook Point
Lincolnshire, IL 60069

www.zebra.com