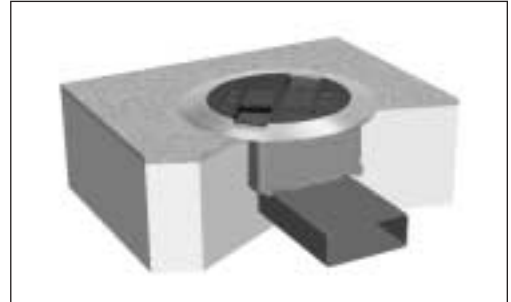


Flush Activations for Walker Underfloor Duct Provide New Capabilities and Aesthetic Options



The New PSRC9 Series of poke-thru style flush service fittings can be applied to multiple Walker Infloor Wire Management Systems using Walkerduct Pro Series aftersets 2" [51mm] and above. The fittings can also attach to Walkerduct Pro Series presets 2" [51mm] and higher. They are an excellent solution for bringing single service power or communication directly to the workstation, with multiple fittings required for two or more services at a single location. The fittings are available in a variety of configurations for power, communication and furniture feed applications. The PSRC9 Series delivers the look, quality and functionality desirable in both new and retrofit construction. Applications include commercial office space, educational facilities, libraries and retail stores.



PSRC9 Series Poke-Thru style service fittings for Underfloor Duct.

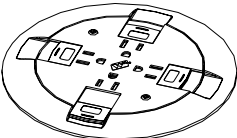
Features & Benefits

- **UL Listed to both U.S. and Canadian safety standards.**
- **Quad power in one fitting.** The design of the PSRC9 Series provides (4) 15A receptacle locations, which can be wired as standard or as isolated ground.
- **Quad communication and furniture feed.** Communication bezels provided accept a wide variety of communication jacks. Furniture feed devices provide 1/2", 3/4" or 1 1/4" and 2" trade size conduit connections.
- **Color matched flanges and slide holder.** Gray and black flanges feature nonmetallic slide holders in the same color. Provides a consistent, aesthetically pleasing appearance. Brass flange features a black nonmetallic slide holder.
- **New aluminum flange.** Brushed aluminum flange with black nonmetallic slide holder compliments other Walker brushed aluminum service fittings.
- **Flush profile cover.** Provides consistent look throughout buildings featuring multiple wire management systems (UFD or poke-thru systems). Flush cover will not obstruct ability to design an open floor plan.
- **Datacom connectivity options.** Accepts industry standard and proprietary devices from a wide range of manufacturers to provide a seamless and aesthetically pleasing interface for voice, data, audio, and video applications at the point of use.
- **Individual slide covers.** Slide covers protect both power and communication devices. Power slide covers snap back into place when receptacle is not in use. PSRC9AMDTC and PSRC9AMDRTTC Series are the only all communication poke-thru style service fittings with slide cover protection when devices are not in use.
- **Meets ADA accessibility guidelines.** Even though ADA does not specifically cover floor boxes or poke-thru style service fittings, the wide trim flange is designed to meet the ADA Accessibility Guidelines as it pertains to ADA Standard 4.5 which addresses changes in ground and floor surface levels. The trim flanges are beveled so the slope is no greater than a 1:2 ratio.

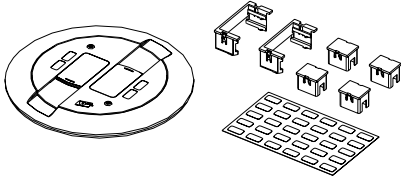
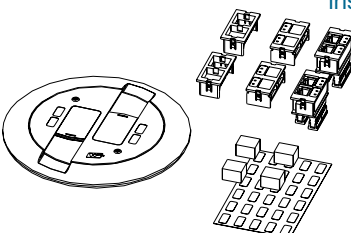
IMPORTANT!

The PSRC9 Series Power and Communication styles can be applied to Walkerduct Pro Series presets and aftersets 2" (51mm) and above. The PSRC9 Furniture Feed style can be applied to Pro Series presets and aftersets 1" and above. Refer to ED825 RC700XR Service Fittings for additional poke-thru style service fittings

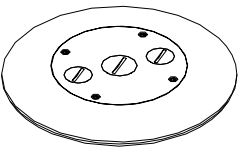
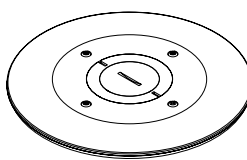
PSRC9TC Series Power Fittings

Catalog No./Item	Description/Specifications
<p>PSRC9TCGY PSRC9TCAL PSRC9TCBK PSRC9TCBS</p>	<p>Quad Power- Available in gray (GY), aluminum (AL), black (BK) or brass (BS). Quad 15A receptacle included for standard or isolated ground wiring. Unit complete with link straps, adapter plate and receptacle bracket to attach preset or afterset.</p>
	

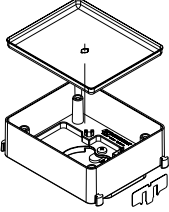
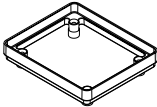
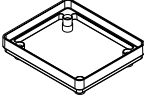
PSRC9AMDTC Series All Communication Fittings

Catalog No./Item	Description/Specifications		Catalog No./Item	Description/Specifications	
<p>PSRC9AMDRTTCGY PSRC9AMDRTTCAL PSRC9AMDRTTCBK PSRC9AMDRTTCBS</p>	<p>Quad Ortronics Communication – Available in gray, aluminum, black or brass. Unit complete with link straps and adapter plate to attach preset or afterset.</p> <ul style="list-style-type: none"> • Accepts Ortronics TracJack and Series II bezels included. • Modular inserts sold separately. 	<div style="background-color: #0056b3; color: white; padding: 2px; margin-bottom: 2px;">ORT</div> <div style="background-color: #cccccc; padding: 2px; margin-bottom: 2px;">P&S</div> <div style="background-color: #cccccc; padding: 2px;">OPEN</div>	<p>PSRC9AMDTCGY PSRC9AMDTCAL PSRC9AMDTCBK PSRC9AMDTCBS</p>	<p>Quad Communication – Available in gray, aluminum, black or brass. Unit complete with link straps and adapter plate to attach preset or afterset.</p> <ul style="list-style-type: none"> • Includes two Pass & Seymour Category 5e dual modular inserts. • Accepts Wiremold Open insert, sold separately. 	<div style="background-color: #0056b3; color: white; padding: 2px; margin-bottom: 2px;">ORT</div> <div style="background-color: #cccccc; padding: 2px; margin-bottom: 2px;">P&S</div> <div style="background-color: #cccccc; padding: 2px;">OPEN</div>
					

PSRC9 Series Furniture Feed Fittings

Catalog No./Item	Description/Specifications
<p>PSRC9FFTCGY PSRC9FFTCAL PSRC9FFTCBK PSRC9FFTCBS</p>	<p>Flush Furniture Feed – Available in gray, aluminum, black or brass. Unit complete with link straps, adapter plate, and conduit assembly featuring (1) 3/4" trade size and (2) 1/2" trade size conduit connections and closure plugs.</p>
	
<p>PSRC9FF2TCGY PSRC9FF2TCAL PSRC9FF2TCBK</p>	<p>2" [51mm] Flush Furniture Feed – Available in gray, aluminum, or black. Unit complete with link straps, adapter plate, and features concentric screw plugs that allow for 1 1/4" or 2" trade size conduit fitting connections.</p>
	

PSRC9 Series Activation Accessories

Catalog No./Item	Description/Specifications
4210 4215 4220 4225 4230	 <p> 1" [25mm] High Afterset 1 1/2" [38mm] High Afterset 2" [51mm] High Afterset 2 1/2" [64mm] High Afterset 3" [76mm] High Afterset – Installed either before or after concrete pour to create activation from duct. Requires 6 1/2" [165mm] core drilled hole in concrete and 2 1/2" [64mm] diameter hole in duct. Grout fill required around afterset once installed to fill voids and support fitting flange. Attaches to duct using locking tabs. Extensions can be attached to increase height (see below). Aftersets are gangable and include alignment clip and mudcap. </p> <div style="border: 1px solid black; padding: 5px; text-align: center; margin: 10px 0;"> <p>IMPORTANT!</p> <p><i>The PSRC9 Series power and communication styles can be applied to Walkerdect Pro Series presets and aftersets 2" [51mm] and above. The PSRC9 furniture feed style can be applied to Pro Series presets and aftersets 1" and above.</i></p> </div>
425 426	 <p> 1/2" (12mm) High Extension 1" (25mm) High Extension – Used to increase height of preset or afterset. Die cast construction. Attach to preset or afterset with push on metal sleeves (included). Cat. No. 426 can be stacked, Cat. No. 425 cannot be stacked. </p>
421	 <p> Mudcap – Steel replacement cap for preset. Recessed to hold 3/8" [9.5mm] concrete. </p>

PSRC9 Series Activation Accessories

OLD CATALOG NUMBER	NEW CATALOG NUMBER
RC700XR-20	PSRC9TCGY or PSRC9TCAL
RC700XR-BR20	PSRC9TCBS
RC700XR-BL20	PSRC9TCBK
RC700XR-MD	PSRC9AMDTCGY or PSRC9AMDTCAL
Alternate Ortronics Version	PSRC9AMDRTTTCGY or PSRC9AMDRTTTCAL
RC700XR-MD-BR	PSRC9AMDTCBS
Alternate Ortronics Version	PSRC9AMDRTTCBS
RC700XR-MD-BL	PSRC9AMDTCBK
Alternate Ortronics Version	PSRCAMDRTTCBK
RC700XR-6-4	PSRC9FFTCGY or PSRC9FFTCAL
RC700XR-6-4BR	PSRC9FFTCBS
RC700XR-6-4BL	PSRC9FFTCBK

Datacom Connectivity Options

Now you have a wide range of options for providing datacom connectivity into Wiremold® Cable Management Systems. They are:

- Ortronics® TracJack® and Series II Modular Connectivity Solutions
- Pass & Seymour Activate™ Modular Inserts
- Open System Communication Modules

ORT	ORT	ORT
P&S	P&S	P&S
OPEN	OPEN	OPEN

Use these icons to determine connectivity options for each Wiremold System component:

ORT
P&S
OPEN

Ortronics® Connectivity

TracJack® Individual Jack System

- Front-loading, snap-in design supports future moves adds and changes
- Inserts for voice, data, audio, and video
- Available Category 3, 5e, 6, USOC 6-position, and other media
- Choice of 13 colors and color matched to Wiremold Systems
- Universal T568A/B wiring format



Series II Front-Loading, Module System

- Module design features easy snap-in front-loading design
- Linear 110 punch down format for easy termination
- Inserts for voice, data, audio, and video
- Available Category 3, 5e, 6, USOC 6-position, and other media
- Color matched to Wiremold Systems



For detailed product selection refer to the Ortronics Catalog or visit www.ortronics.com.

ORT
P&S
OPEN

Pass & Seymour Legrand Network Wiring

Activate™ Series Front-Loading Inserts

- Modular inserts for voice, data, audio and video applications
- Front-load, snap-in design
- Color and texture matched to Wiremold Systems
- Available Category 3, 5e, 6, as well as 6-position USOC
- Universal T568A/B wiring format



For detailed product selection refer to the Pass & Seymour Network Wiring Catalog or visit www.passandseymour.com.

ORT
P&S
OPEN

Open Connectivity Solutions

Wiremold Open System Communications Modules

- Accommodate a wide range of manufacturers' communications outlets including keystone jacks, as well as proprietary solutions from Avaya (Lucent) and NORDX
- Modules insert into a wide range of Wiremold Systems
- Pre-punched faceplates accept common communication devices



NOTE: For more information on integrating connectivity into Wiremold Cable Management Systems contact the Wiremold Applications Engineering Team or your local Wiremold Sales Representative.

WIREMOLD



Wiremold / Legrand
U.S. and International:
60 Woodlawn Street • West Hartford, CT 06110
1-800-621-0049 • FAX 860-232-2062 • Outside U.S. 860-233-6251
Canada:
570 Applewood Crescent • Vaughan, Ontario L4K 4B4
1-800-723-5175 • FAX 905-738-9721

