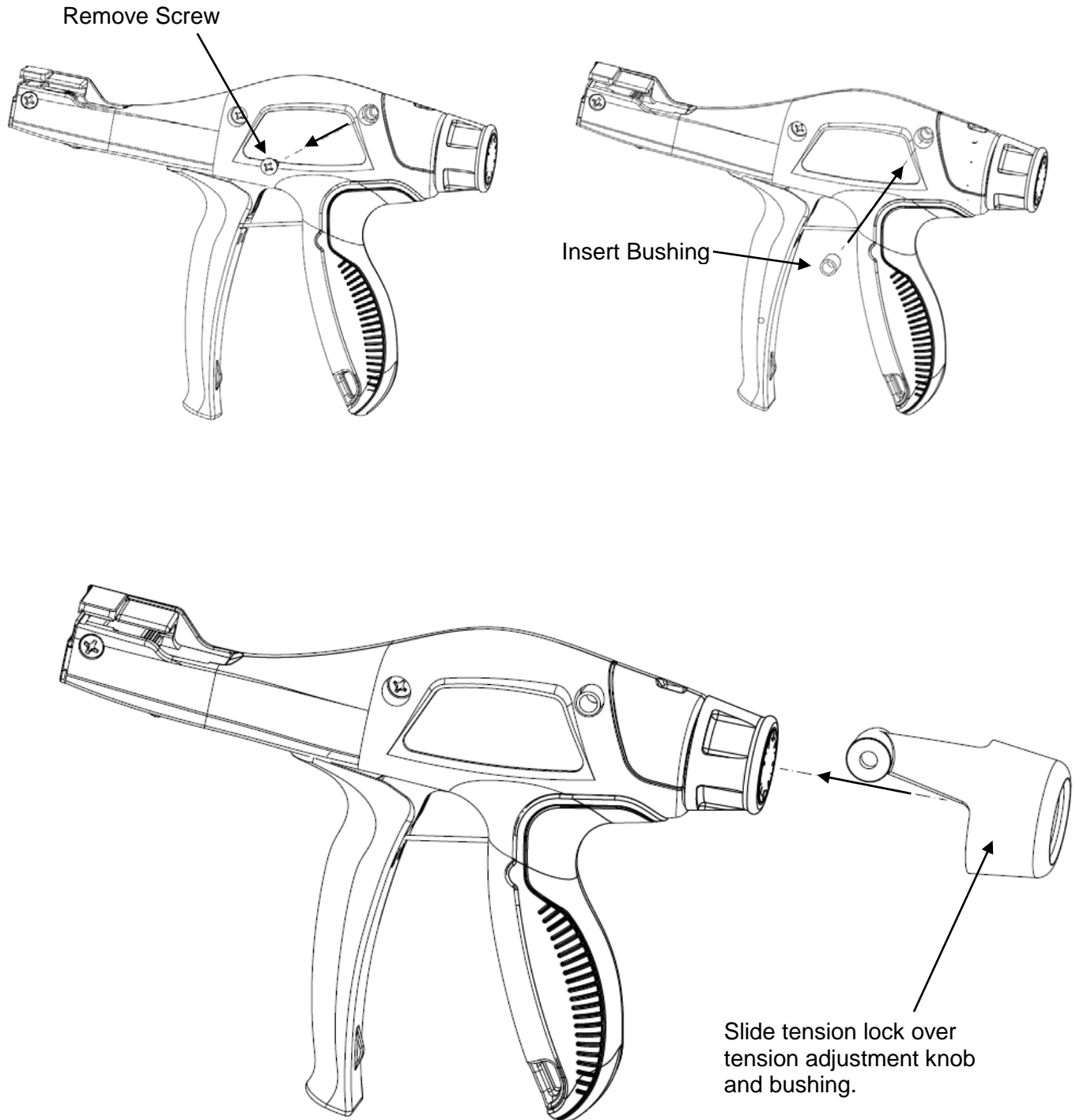
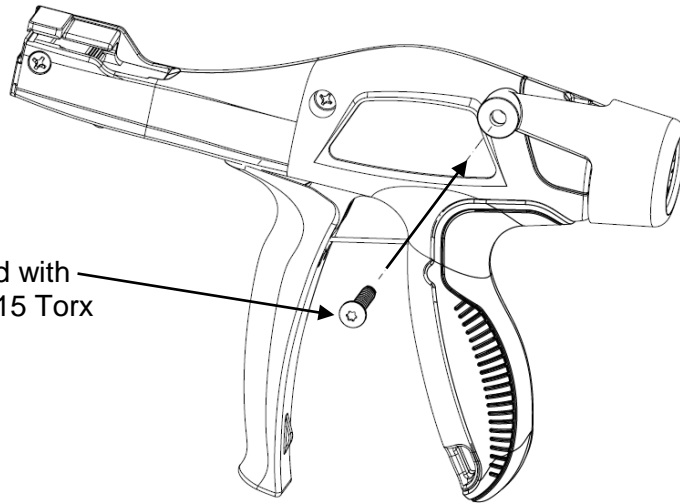


SCREW-TYPE TENSION LOCKOUT KIT INSTALLATION INSTRUCTIONS FOR: GS2B-E, GS4H-E and GS4EH-E and GS4MT-E TOOLS

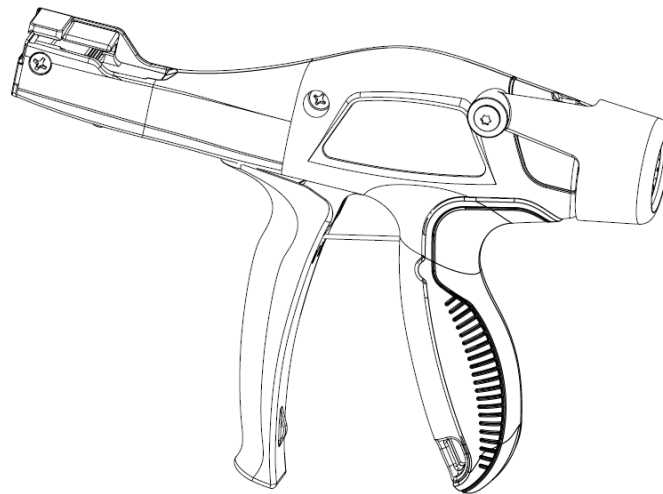
© Panduit Corp. 2019





Insert screw included with tension lock using T15 Torx bit provided.

Torque 10 in. lbs.



PARTS LIST	
DESCRIPTION	QTY.
Tension Lockout	1
Bushing	1
Screw	1
T15 Torx Bit	1

Email:
techsupport@panduit.com

EU Website:
www.panduit.com/emea

EU Email:
emeatoolservicecenter@panduit.com



www.panduit.com

Panduit Corp.
USA Technical Support
Tel: 800-777-3300

Panduit Europe • EMEA Service Center
Tel: +31 546 580 452 • Fax: +31 546 580 441