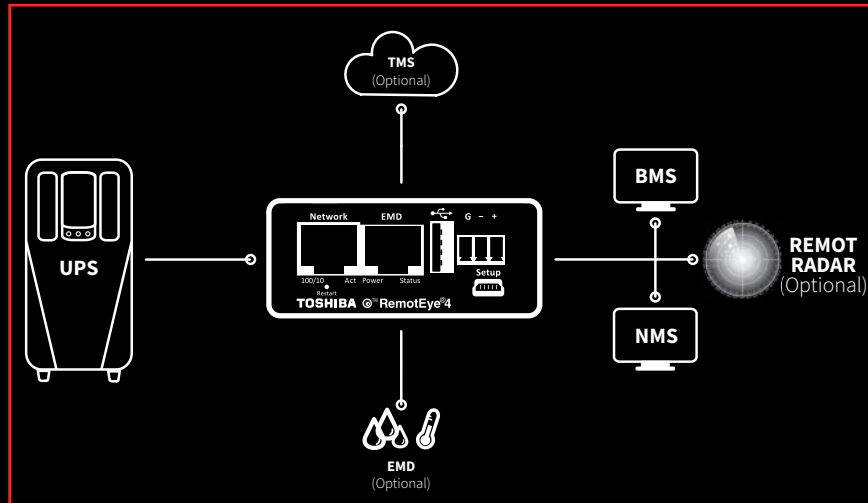


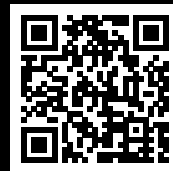
Contact & Follow

Toshiba International Corporation • 13131 W. Little York Rd.
Houston, TX 77041 • 855-803-7087
ToshibaUPS.com • @MadeByTOSHIBA



©Toshiba International Corporation 2019-Rev191122

Watch RemotEye 4 Online



TOSHIBA



RemotEye[®] 4
Multi-Protocol UPS Manager

RemotEye® 4

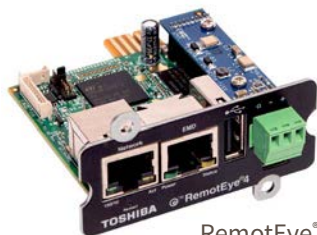
Multi-Protocol UPS Manager

The fourth generation UPS monitoring solution boosts speed and memory for rapid UPS data storage, IoT connectivity, customizable dashboard, and rapid output data via these communication protocols:

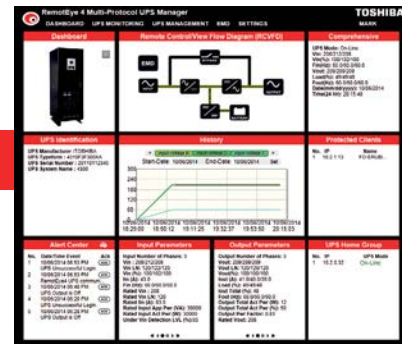
- Modbus TCP & RTU
- BACnet IP & MSTP
- HTTP/HTTPS
- SNMP
- MQTT (for Toshiba Monitoring System)

Custom Dashboards & UPS Home Group

With a variety of widgets to choose from, RemotEye® users can customize personal dashboards for monitoring UPS installations. RemotEye also features a New UPS Home Group option to monitor multiple UPS units simultaneously.



RemotEye® 4



Automated Reminders & Mobile Web

- Custom reminders can be programmed for preventative UPS maintenance, such as air filter replacement
- Mobile-friendly website for status updates on-the-go
- Multi-profile logins for UPS networks
- Compatible with T1000, 1600XP/XPi, 4300, 4400, G9000, G2020, 5000 Series 3P1 & N3R UPS
- Compatible with IPv6

Added Security

RemotEye uses SSHv2 secure connection to ensure data transmitted over the network is protected when connected to console (settings menu).

Innovative Features

- Automatic firmware updates available via the RemotEye® 4 website
- Orderly shutdowns for virtualization operating systems
- Environmental Monitoring Device available for real-time temperature and humidity updates
- Pairs well with RemotRadar® on-premise software for monitoring of up to 1,000 RemotEye cards
- Allows integration of UPS into the Toshiba Monitoring System (TMS) for real-time UPS health monitoring by Toshiba Experts, instant fault detection, data analytics, and many other services.