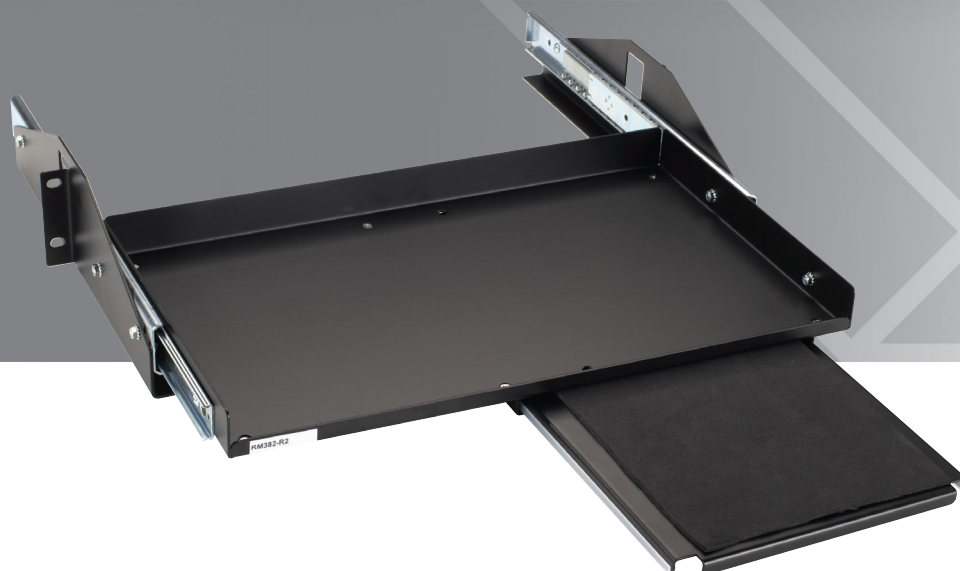




## Sliding Keyboard Shelves with Mouse Pad Extension

Mount your keyboard and mouse on convenient slide-in/slide-out shelves.



### Specifications

**Size** — 3.84"H (2U) x 19.02"W x 14.84" to 24.66"D (9.75 x 48.3 x 37.7 to 62.6 cm);

Keyboard area: 16"W x 9.88"D (40.64 x 25.09 cm);

Mouse area: 8"W x 7.88"D (20.32 x 20.02 cm)

### What's included

Your package should contain the following items. If anything is missing or damaged, contact Black Box Technical Support at 724-746-5500 or [info@blackbox.com](mailto:info@blackbox.com).

- (1) Sliding Keyboard Shelf with Mouse Pad Extension
- (4) 10-32 x 1/2" black panhead screws
- (4) 12-24 x 1/2" black panhead screws
- (4) M6 cage nuts and screws
- This specification sheet

### Customer Support Information

Order toll-free in the U.S.: Call 877-877-BBOX (outside U.S. call 724-746-5500)  
FREE technical support 24 hours a day, 7 days a week: Call 724-746-5500 or fax 724-746-0746  
Mailing address: Black Box Corporation, 1000 Park Drive, Lawrence, PA 15055-1018  
Web site: [www.blackbox.com](http://www.blackbox.com) • E-mail: [info@blackbox.com](mailto:info@blackbox.com)

## Installation

To install the Keyboard Shelf in the vertical mounting rails of your standard 19" rack, you'll need a Phillips-head screwdriver. Follow these steps:

1. Select the desired mounting location for the Keyboard Shelf. Carefully position the Shelf so that the mounting holes in the Shelf's flanges align with the tapped holes in your rack's vertical channels.

*NOTE: The tapped holes are spaced according to EIA-standard universal hole spacing.*

2. Attach the Keyboard Shelf to the vertical channels by inserting the four included panhead screws through the mounting flanges in front of the Shelf and the tapped holes in the vertical channels.
3. Tighten the screws securely.
4. To use the Shelf, simply pull the tray toward you. It will smoothly roll forward on a ball-bearing slide.
5. There are four mounting options for the Mouse Pad. The Pad will be positioned on the right when you receive the Keyboard Shelf. If you'd like to move it to one of the other positions, unscrew the Pad. Reposition it and insert the screws you just removed in the pre-drilled holes. Tighten the screws until the Pad is securely in place. The Mouse Pad slides underneath the Keyboard Shelf when not in use. Make sure to push the Pad into this storage position before closing the Shelf.



© Copyright 2012. Black Box Corporation. All rights reserved. Printed in U.S.A. Black Box® and the Double Diamond logo are registered trademarks of BB Technologies, Inc. Any third-party trademarks appearing in this publication are acknowledged to be the property of their respective owners.

RM382-R3, rev. 2

FREE, live, 24/7 Tech Support is just 30 seconds away.  
724-746-5500 | [blackbox.com](http://blackbox.com)