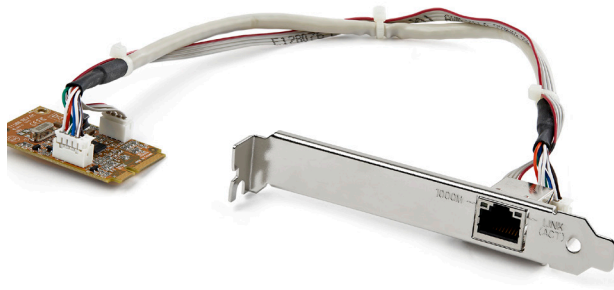


1 Port Mini PCI Express Gigabit Network Adapter

ST1000SMPEX



*actual product may vary from photos

DE: Bedienungsanleitung - de.startech.com

FR: Guide de l'utilisateur - fr.startech.com

ES: Guía del usuario - es.startech.com

IT: Guida per l'uso - it.startech.com

NL: Gebruiksaanwijzing - nl.startech.com

PT: Guia do usuário - pt.startech.com

For the most up-to-date information, please visit: www.startech.com

FCC Compliance Statement

This equipment has been tested and found to comply with the limits for a Class B digital device, pursuant to part 15 of the FCC Rules. These limits are designed to provide reasonable protection against harmful interference in a residential installation. This equipment generates, uses and can radiate radio frequency energy and, if not installed and used in accordance with the instructions, may cause harmful interference to radio communications. However, there is no guarantee that interference will not occur in a particular installation. If this equipment does cause harmful interference to radio or television reception, which can be determined by turning the equipment off and on, the user is encouraged to try to correct the interference by one or more of the following measures:

- Reorient or relocate the receiving antenna.
- Increase the separation between the equipment and receiver.
- Connect the equipment into an outlet on a circuit different from that to which the receiver is connected.
- Consult the dealer or an experienced radio/TV technician for help.

Use of Trademarks, Registered Trademarks, and other Protected Names and Symbols

This manual may make reference to trademarks, registered trademarks, and other protected names and/or symbols of third-party companies not related in any way to StarTech.com. Where they occur these references are for illustrative purposes only and do not represent an endorsement of a product or service by StarTech.com, or an endorsement of the product(s) to which this manual applies by the third-party company in question. Regardless of any direct acknowledgement elsewhere in the body of this document, StarTech.com hereby acknowledges that all trademarks, registered trademarks, service marks, and other protected names and/or symbols contained in this manual and related documents are the property of their respective holders.

Table of Contents

Introduction	1
Package Contents	1
System Requirements.....	1
Installation	2
Hardware Installation	2
Driver Installation.....	3
Specifications	4
Technical Support	5
Warranty Information	5

Introduction

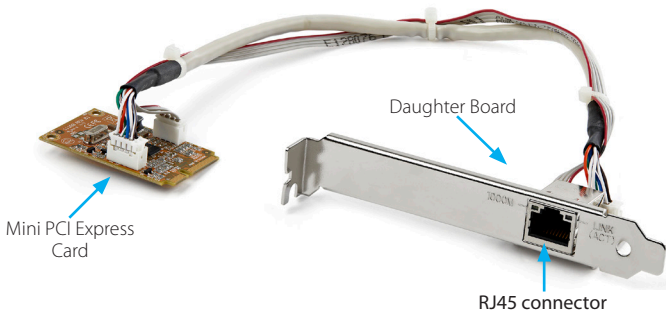
The ST1000SMPEX 1 Port Mini PCI Express Gigabit Network Adapter Card adds 1000Mbps network connectivity to a Mini PCI Express (PCI Express Mini Card, Mini PCIe) enabled computer system, such as Mini-ITX motherboards. Supporting features such as NDIS5 checksum and large send offload for lower CPU utilization, Wake-on-LAN (WOL) and Remote Wake-up power management, jumbo frames and VLAN tagging, this ExpressCard Ethernet Adapter is ready to handle a wide variety of scenarios. Perfect for small form factor or embedded systems that originally lack Gigabit networking, or adding an additional network connection without taking up the full sized PCI Express slots. Includes a low profile bracket for additional installation options.

Package Contents

- 1 x Mini PCIe Card
- 1 x RJ45 Daughter Board
- 1 x Low Profile Installation Bracket
- 1 x Internal LED Cable
- 1 x Internal Data Cable
- 1 x Driver CD
- 1 x Instruction Manual

System Requirements

- PCI Express enabled computer system with available mini PCIe slot
- Microsoft® Windows® 2000/ XP/ Server 2003/ Vista/ Server 2008 R2/ 7 (32/64-bit), or Apple® Mac OS® 10.4.x/10.5.x or Linux® and Unix®



Installation



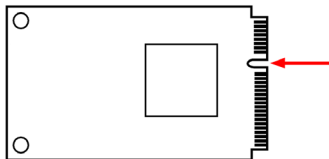
WARNING! Computer parts can be severely damaged by static electricity. Be sure that you are properly grounded before opening your computer case. StarTech.com recommends that you wear an anti-static strap when installing any computer component. If an anti-static strap is unavailable, discharge yourself of any static electricity build-up by touching a large grounded metal surface (such as the computer case) for several seconds.

Hardware Installation

1. Line up and insert the Mini PCI Express adapter card with the Mini PCI Express slot on the system board at a slight angle. Make sure to match up the gap in the card connector, with the notch in the card slot.



*installation photos for reference only



2. Push the Mini Card back against system board and fasten the top edge of the Mini Card to the system board.



NOTE: Different systems may have different methods for installing mini cards, so please refer to documentation for your system/board for full installation instructions for your particular application.

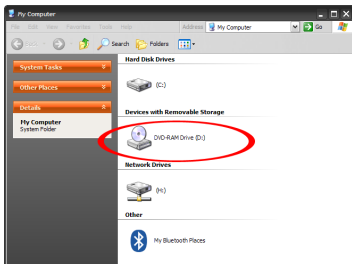
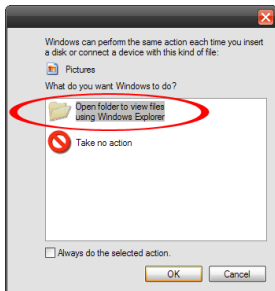
3. Make sure the cable that connects the Mini Card to the Daughter Board is firmly seated at both ends.
4. Locate an open expansion card slot and remove the metal cover plate on the rear of the computer case (Refer to documentation for your computer system for details).
5. Gently insert the Daughter Board into the open expansion slot and fasten the bracket to the rear of the case.

NOTE: If installing the card into a small form factor/low profile system, replacing the pre-installed full profile bracket with the included low profile installation bracket may be necessary.

Driver Installation

Windows 2000/ XP/ Server 2003/ Vista/ Server 2008 R2/ 7

1. Upon starting Windows, if the "Found New Hardware" wizard appears on the screen, cancel/close the window and insert the included Driver CD into the computer's CD/ DVD drive.
2. AutoPlay should automatically launch and display all of the folders on the CD or prompt you to view files. If not, open "My Computer" and double-click on the CD/ DVD drive.



*screenshots for reference only

3. Enter the folder "LAN", then "RealtekRTL8111B_8111C_8111E", followed by your operating system version and double-click the "Setup.exe" file in that folder.
4. This should launch the driver Installation wizard. Continue through the wizard and once complete, all the necessary drivers will be installed.

Specifications

Host Interface	PCI Express Mini Card revision 1.1
Form Factor	Full Length Mini PCI Express
Chipset ID	Realtek RTL8111C
External Connectors	1 x RJ45 Ethernet female
LEDs	1 x Gigabit Link 1 x Activity
Supported Standards	IEEE 802.3, IEEE 802.3u, IEEE 802.3ab
Maximum Data Transfer Rate	1000 Mbps
Full Duplex Support	Yes
Auto MDIX	Yes
Operating Temperature	0°C ~ 55°C (32°F ~ 131°F)
Storage Temperature	-20°C ~ 85°C (-4°F ~ 185°F)
Humidity	5% ~ 95% RH
Dimensions (LxWxH)	51.0mm x 30.0mm x 4.0mm
Weight	150g
Compatible Operating Systems	Windows 2000/ XP/ Server 2003/ Vista/ Server 2008 R2/ 7 (32/64-bit), Mac OS 10.4/10.5, Linux, Unix

Technical Support

StarTech.com's lifetime technical support is an integral part of our commitment to provide industry-leading solutions. If you ever need help with your product, visit www.startech.com/support and access our comprehensive selection of online tools, documentation, and downloads.

For the latest drivers/software, please visit www.startech.com/downloads

Warranty Information

This product is backed by a two year warranty.

In addition, StarTech.com warrants its products against defects in materials and workmanship for the periods noted, following the initial date of purchase. During this period, the products may be returned for repair, or replacement with equivalent products at our discretion. The warranty covers parts and labor costs only. StarTech.com does not warrant its products from defects or damages arising from misuse, abuse, alteration, or normal wear and tear.

Limitation of Liability

In no event shall the liability of StarTech.com Ltd. and StarTech.com USA LLP (or their officers, directors, employees or agents) for any damages (whether direct or indirect, special, punitive, incidental, consequential, or otherwise), loss of profits, loss of business, or any pecuniary loss, arising out of or related to the use of the product exceed the actual price paid for the product. Some states do not allow the exclusion or limitation of incidental or consequential damages. If such laws apply, the limitations or exclusions contained in this statement may not apply to you.

Hard-to-find made easy. At StarTech.com, that isn't a slogan. It's a promise.

StarTech.com is your one-stop source for every connectivity part you need. From the latest technology to legacy products — and all the parts that bridge the old and new — we can help you find the parts that connect your solutions.

We make it easy to locate the parts, and we quickly deliver them wherever they need to go. Just talk to one of our tech advisors or visit our website. You'll be connected to the products you need in no time.

Visit www.startech.com for complete information on all StarTech.com products and to access exclusive resources and time-saving tools.

StarTech.com is an ISO 9001 Registered manufacturer of connectivity and technology parts. StarTech.com was founded in 1985 and has operations in the United States, Canada, the United Kingdom and Taiwan servicing a worldwide market.