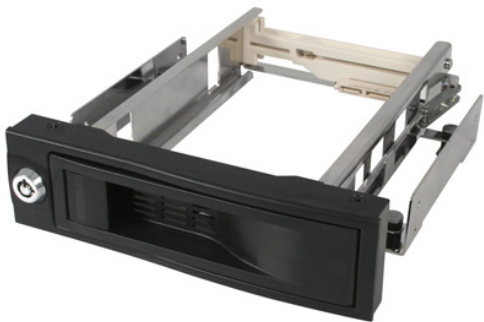


5.25in Trayless Hot Swap Mobile Rack for 3.5in Hard Drive

HSB100SATBK



*actual product may vary from photos

DE: Bedienungsanleitung - de.startech.com

FR: Guide de l'utilisateur - fr.startech.com

ES: Guía del usuario - es.startech.com

IT: Guida per l'uso - it.startech.com

NL: Gebruiksaanwijzing - nl.startech.com

PT: Guia do usuário - pt.startech.com

For the most up-to-date information, please visit: www.startech.com

FCC Compliance Statement

This equipment has been tested and found to comply with the limits for a Class B digital device, pursuant to part 15 of the FCC Rules. These limits are designed to provide reasonable protection against harmful interference in a residential installation. This equipment generates, uses and can radiate radio frequency energy and, if not installed and used in accordance with the instructions, may cause harmful interference to radio communications. However, there is no guarantee that interference will not occur in a particular installation. If this equipment does cause harmful interference to radio or television reception, which can be determined by turning the equipment off and on, the user is encouraged to try to correct the interference by one or more of the following measures:

- Reorient or relocate the receiving antenna.
- Increase the separation between the equipment and receiver.
- Connect the equipment into an outlet on a circuit different from that to which the receiver is connected.
- Consult the dealer or an experienced radio/TV technician for help.

Use of Trademarks, Registered Trademarks, and other Protected Names and Symbols

This manual may make reference to trademarks, registered trademarks, and other protected names and/or symbols of third-party companies not related in any way to StarTech.com. Where they occur these references are for illustrative purposes only and do not represent an endorsement of a product or service by StarTech.com, or an endorsement of the product(s) to which this manual applies by the third-party company in question. Regardless of any direct acknowledgement elsewhere in the body of this document, StarTech.com hereby acknowledges that all trademarks, registered trademarks, service marks, and other protected names and/or symbols contained in this manual and related documents are the property of their respective holders.

Table of Contents

Introduction	1
Packaging Contents	1
System Requirements.....	1
Installation	2
Installing the removable drive frame in the computer	2
Connecting the drive activity indicator	3
Installing the hard drive into the drive frame	3
Removing the hard drive from the drive frame	3
Specifications	4
Technical Support	5
Warranty Information	5

Introduction

Thank you for purchasing a StarTech.com trayless SATA hard drive bay. Now, you can enjoy a truly portable storage solution, with the ability to insert and remove a bare SATA drive without having to mount it in a drive tray or drawer.

Packaging Contents

- 1 x 5.25" Trayless SATA Hot Swap Drive Bay
- 1 x Manual
- 1 x Screw kit
- 2 x Keys
- 1 x Drive Activity LED w/ Pin Wires

System Requirements

- An available 5.25" drive bay
- 3.5" SATA hard drive

Installation

To ensure a quick and easy installation, please read through this section before attempting to install this device.

WARNINGS: Hard drives require careful handling, especially when being transported. If you are not careful with your hard disk, it may result in lost data. Always handle your hard drive with caution.

Hard drives, like all computer equipment can also be severely damaged by static electricity. Be sure that you are properly grounded before opening your computer case or touching any components. StarTech.com recommends that you wear an antistatic strap when installing any computer equipment. If an anti-static strap is unavailable, discharge yourself of any static electricity build-up by touching a large grounded metal surface (such as the computer case) for several seconds.

Do not bump, jar, or drop the device. Do not disconnect any cables or power sources while the hard drive is active. This can result in data loss and possible damage to the hard drive. Always make sure that your hard drive is fully spun down before removing the device.

Installing the removable drive frame in the computer

1. Open your computer case. In most designs, the case is opened by removing two or three screws at the rear of the case and then sliding the covering side panel backward until it comes free. If your case is a tower style, ensure that you remove the panel that will expose the top of the computer's motherboard. This is generally the left-side panel.

Note: There are many different case designs, however, so if you are unsure of how to open your particular case, consult the user manual for your case or contact your local computer store for help.

2. Remove the cover of an empty drive bay.
3. Insert the drive frame into the bay through the empty slot, pushing inwards until the screw holes from the frame are aligned with the holes provided by the drive bay.
4. Secure the frame in the drive bay by inserting and tightening the screws provided, into the holes of the drive bay, and the newly inserted frame.



5. Connect the SATA power cable and the SATA data cables to the appropriate ports provided on the back of the rear panel of the drive frame.

Connecting the drive activity indicator

- Connect the pre-installed LED Cables to the LED Indicator for the installed drive on the Motherboard or Controller Card.

Installing the hard drive into the drive frame

1. Pull the spring lock to open the front door.
2. Position the hard drive near the entry of the frame, with the label of the hard drive facing up, and the rear panel of the hard drive aimed towards the inside of the computer.
3. Gently push the drive into the frame until the locking arm begins to close.
4. Secure the drive in the frame by continuing to close the locking arm. Gently apply pressure to the locking arm, until you hear the 'click' of the spring lock.



5. Optional: To lock the drive in the frame, insert the key provided into the keyhole at the front of the drive bay. Turn the key 90° to the right, and remove the key.

Removing the hard drive from the drive frame

1. If you opted to lock the drive in place, insert the key into the keyhole. Turn the key 90° to the left, and remove the key.
2. Gently, but firmly open the locking arm until it is out of the path of the hard drive removal.
3. Once the locking arm is open, slowly pull the hard drive out of the frame.
4. Return the locking arm to the secured position.

Specifications

Form Factor	Serial ATA
Dimensions	184 x 149 x 42 (mm)
Interface	SATA, SATA II , SATA III
Operating temperature	0° - 55°C
Insertion rating	50,000 insertions/removals

Technical Support

StarTech.com's lifetime technical support is an integral part of our commitment to provide industry-leading solutions. If you ever need help with your product, visit www.startech.com/support and access our comprehensive selection of online tools, documentation, and downloads.

For the latest drivers/software, please visit www.startech.com/downloads

Warranty Information

This product is backed by a two year warranty.

In addition, StarTech.com warrants its products against defects in materials and workmanship for the periods noted, following the initial date of purchase. During this period, the products may be returned for repair, or replacement with equivalent products at our discretion. The warranty covers parts and labor costs only. StarTech.com does not warrant its products from defects or damages arising from misuse, abuse, alteration, or normal wear and tear.

Limitation of Liability

In no event shall the liability of StarTech.com Ltd. and StarTech.com USA LLP (or their officers, directors, employees or agents) for any damages (whether direct or indirect, special, punitive, incidental, consequential, or otherwise), loss of profits, loss of business, or any pecuniary loss, arising out of or related to the use of the product exceed the actual price paid for the product. Some states do not allow the exclusion or limitation of incidental or consequential damages. If such laws apply, the limitations or exclusions contained in this statement may not apply to you.

Hard-to-find made easy. At StarTech.com, that isn't a slogan. It's a promise.

StarTech.com is your one-stop source for every connectivity part you need. From the latest technology to legacy products — and all the parts that bridge the old and new — we can help you find the parts that connect your solutions.

We make it easy to locate the parts, and we quickly deliver them wherever they need to go. Just talk to one of our tech advisors or visit our website. You'll be connected to the products you need in no time.

Visit www.startech.com for complete information on all StarTech.com products and to access exclusive resources and time-saving tools.

StarTech.com is an ISO 9001 Registered manufacturer of connectivity and technology parts. StarTech.com was founded in 1985 and has operations in the United States, Canada, the United Kingdom and Taiwan servicing a worldwide market.