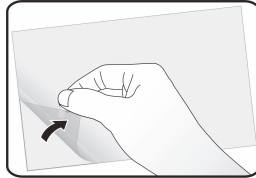


1.



Clean the screen thoroughly with the screen cleaning cloth (included). Make sure there is not any dust, lint, fingerprints, or other particles on the screen surface.

2.

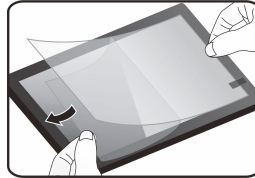


The protection film is shipped in between a thin top layer and a thin backing layer.

At the corner of the backing layer is either a transparent or a white-colored tab. Pull this tab to peel the backing layer off the film by about 1.5 inches along one edge. Do not peel off the whole piece at one time.

Be careful not to touch the adhesive side of the film.

3.



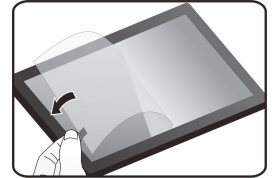
Align the film (adhesive side facing down) with the screen edge and attach the exposed part of the film to the screen. Continue across the screen while peeling off the backing layer a little at a time.

4.



Use the applicator (included) to smooth the film as you work your way across the screen. Remove any remaining air bubbles by pushing them toward the outer edge of the film with the applicator.

5.



Pull the red-colored tab and remove the top layer slowly.



5 6 1 8 1 4 1 1 0 0 0 7 R 0 0