

User Guide for

Surveillance Station 9.0



Table of Contents

Chapter 1: Introduction	01
Chapter 2: Get Started With Surveillance Station	02
2.1 Sign in to Surveillance Station	
2.2 Surveillance Station Desktop	
2.3 Application Center	
2.4 Available clients	
Chapter 3: IP Camera	05
3.1 Add cameras	
3.2 Edit cameras	
3.3 Camera Group	
3.4 Device Pack	
Chapter 4: Video Monitoring	08
4.1 Monitor Center	
4.2 Recording	
4.4 Intelligent Video Analytics	
Chapter 5: Backup	12
5.1 Hyper Backup	
5.2 Archive Vault	
5.3 C2 Surveillance	
Chapter 6: Management	15
6.1 System management	
6.2 Action Rule	
6.3 Home Mode	
6.4 Notification	
6.5 Log	
6.6 CMS	

Chapter 1: Introduction

Surveillance Station is a professional Video Management System (VMS) package bundled with DiskStation Manager (DSM). With its advanced features and comprehensive device compatibility, your surveillance system can be extended far beyond watching camera feeds.

The highlights include:

Camera management: Add multiple cameras and devices and customize the settings. The recording mechanism, audio and video format, stream profile, camera view, and other advanced settings can all be tailored to your needs.

Video monitoring: Customize layouts to view live feeds and playback recordings simultaneously. You can directly control cameras, trigger I/O devices, and oversee detected events through a single monitoring portal.

Recording management: Playback, download, and back up camera recordings. Various searching functions are available to quickly find recordings of specific times and actions. Advanced recording operations allow you to condense videos or customize the recording storage.

Maps: Use interactive maps to guard your premises. Map groups and maps services make it possible to monitor multiple locations at one glance. Detailed alert cards, FOV viewing, and seamless playback features further streamline the operations.

System management: Extend your management with Action Rules that automate surveillance functions, privacy masking and recording encryption that enhance security, and notifications that provide instant alerts to suspicious events.

Centralized Management System (CMS): Host a multi-site surveillance system to manage remote servers, cameras, and recordings from a centralized portal. Automatic failover and backup services are available to ensure uninterrupted surveillance.

Chapter 2: Get Started With Surveillance Station

This chapter explains the sign-in process, navigates you through the Surveillance Station desktop, and compares the available clients.

2.1 Sign in to Surveillance Station

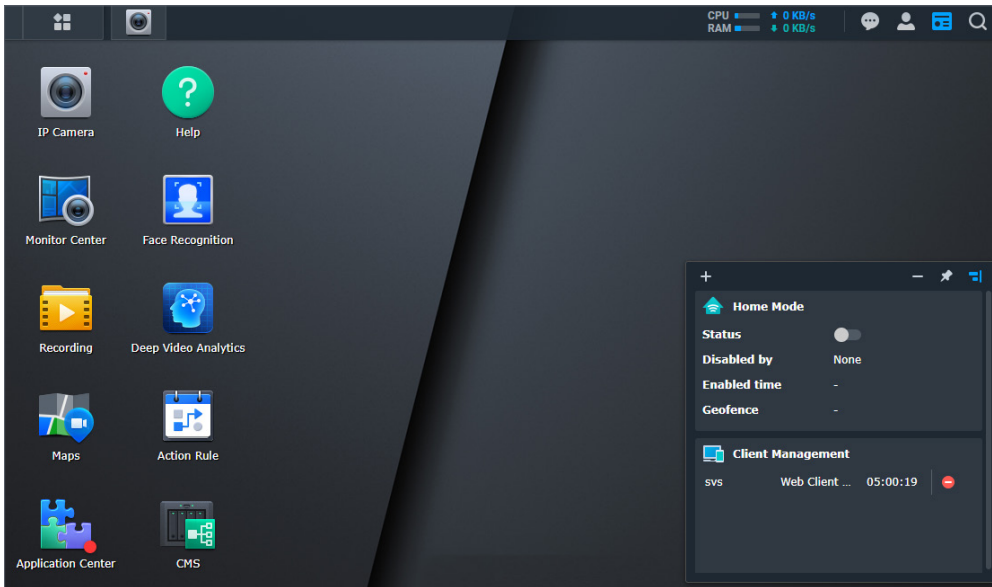
Surveillance Station must be installed and enabled on your DSM to function. Once the installation is complete, there are two ways to sign in using a browser:

- From DSM:
Sign in to DSM and open Surveillance Station from the **Main Menu**.
- From the Login Portal:
Configure the login portal to access Surveillance Station directly. You can then use the server name or IP address to sign in.
 - On DSM 7: Go to **DSM > Control Panel > Login Portal > Applications > Surveillance Station** to configure.
 - On DSM 6: Go to **DSM > Control Panel > Application Portal > Surveillance Station** to configure.

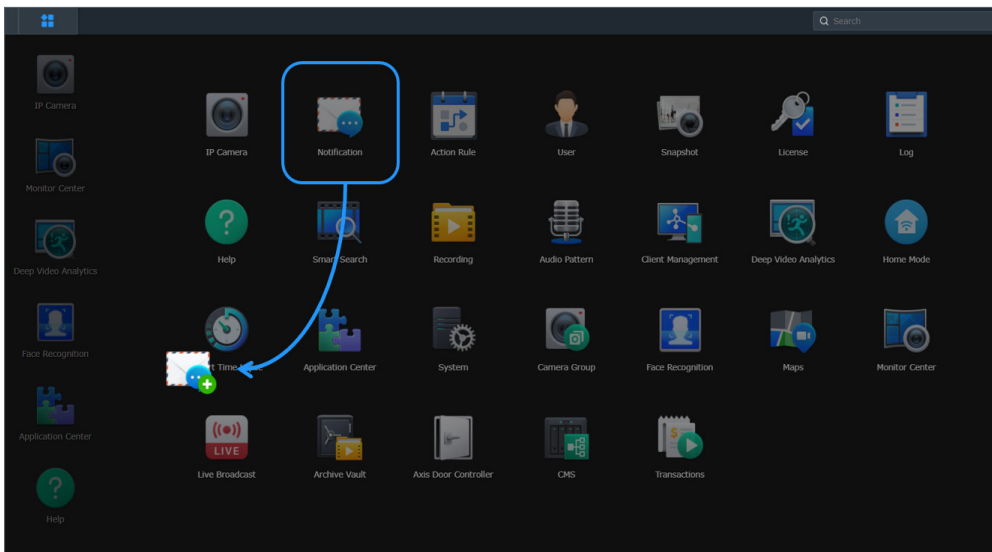
For detailed steps, refer to [this article](#).

2.2 Surveillance Station Desktop

Surveillance Station desktop displays the **Main Menu**, taskbar, and installed applications.

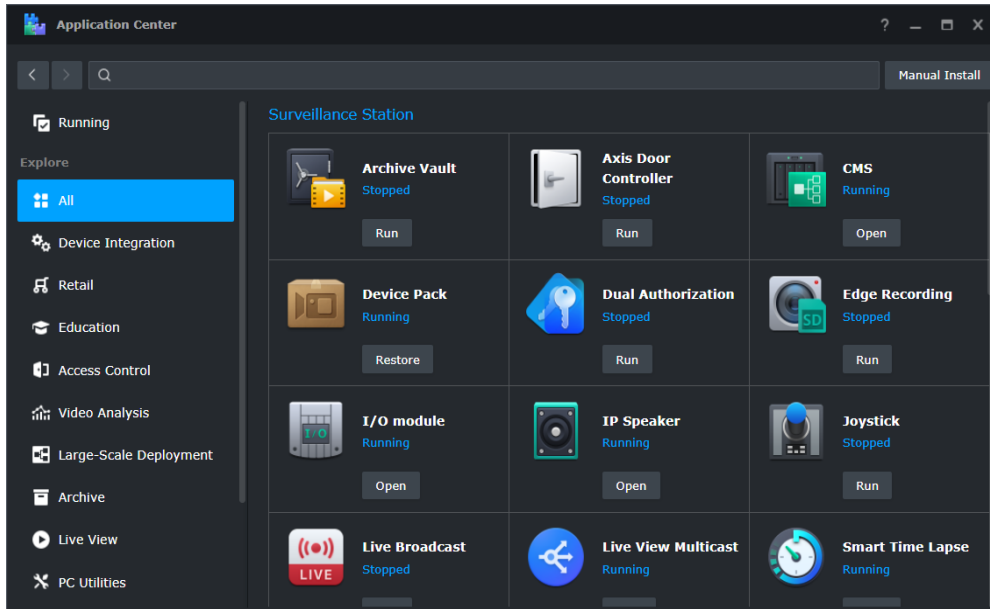


Drag and drop frequently used applications from the **Main Menu** to create desktop shortcuts. The taskbar provides quick access to messages, personal settings, widgets, connected devices, and system statuses.



2.3 Application Center

Application Center offers a variety of surveillance-related applications, desktop utilities, and mobile apps. Use the category panel to explore useful services.



Application Center is also where you run, stop, update, delete, and restore Surveillance Station applications. Click open each app for more information and available operations.

To learn more about **Application Center**, refer to [this article](#).

2.4 Available clients

Surveillance Station supports a variety of clients to suit different usage scenarios.

- **Web browsers:** The web-based interface uses an HTML5 video player and does not require plugins to function. We recommend using Google Chrome for the best user experience.
- **Synology Surveillance Station Client:** The desktop utility provides a smooth viewing experience free from browser limitations. It boosts the system performance when running multiple applications and comes with an additional GPU acceleration function.
Local Display: Local Display is designed for Synology NVR models. Through HDMI output, it supports local live video viewing, recording playback, and other features.
- **VisualStation:** VisualStation is a palm-sized PC-less monitoring device that can function with an Ethernet cable and a monitor. It is ideal for TV-wall setups and multi-screen displays.
- **DS cam:** The mobile app allows you to stream live feeds and control cameras in real-time. It is available on Android and iOS devices.

For the complete list of functions and supported codecs of each client, refer to [this article](#).

Chapter 3: IP Camera

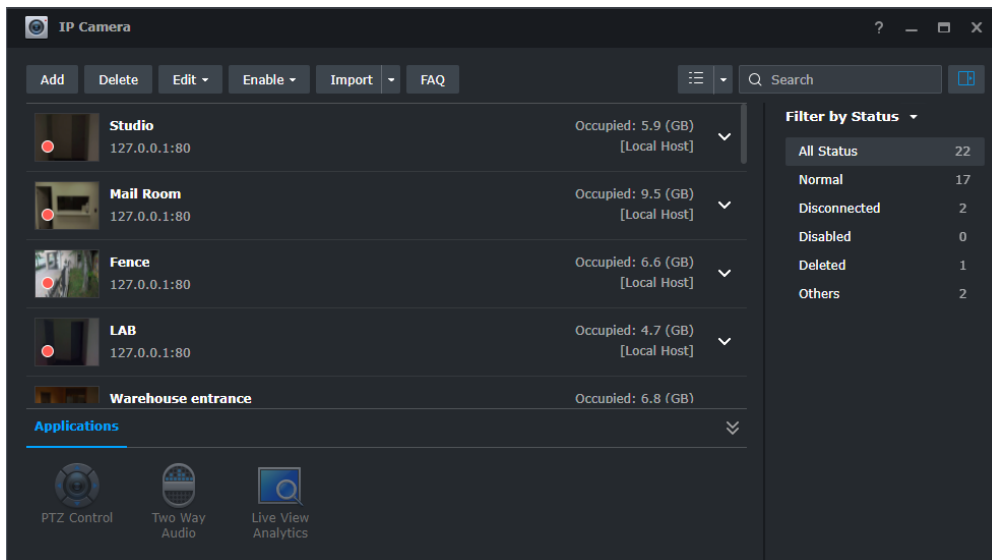
This chapter walks you through the basic setups of IP cameras.

3.1 Add cameras

IP Camera provides two methods to install cameras, **Add** and **Import**. Both are highly flexible and applicable to small and large-scale deployments.

- The **Add** function supports automatically discovering devices and scanning an IP range. You can choose to manually configure settings or copy the settings of existing cameras.
- The **Import** function allows you to add cameras with predefined configurations. You can import a .xlsx list with detailed camera information or a configuration file of existing cameras.

All cameras can be added offline and authenticated later.



Add cameras

Click **Add** to launch the **Add Camera Wizard**. You will be guided through four steps:

1. **Select cameras:** Tick the detected cameras, manually add cameras, or scan an IP range.
2. **Set up camera information:** Name the cameras, select servers, and authenticate the cameras.
3. **Apply camera configurations in batch:** Choose between **Quick Setup** that applies default settings, **Complete Setup** that allows detailed customization, or **Copy Settings** that applies the settings of existing cameras.
4. **Summary:** Check the settings and finish.

For detailed steps, refer to [this article](#).

Import cameras

Click **Import** to launch the **Import Camera Wizard**. You have two options:

- **Camera list:** Download a .xlsx template, fill in the information of your cameras (e.g., name, brand, IP address, video format, resolution), and upload the list back to Surveillance Station.
The wizard will add the cameras with correct settings. If errors occur, download the template that marks the errors and modify the information.
- **Configuration file:** This option helps you migrate cameras between servers. Simply export the configurations of cameras on another server and import the file to this server.

For detailed steps, refer to [this article](#).

3.2 Edit cameras

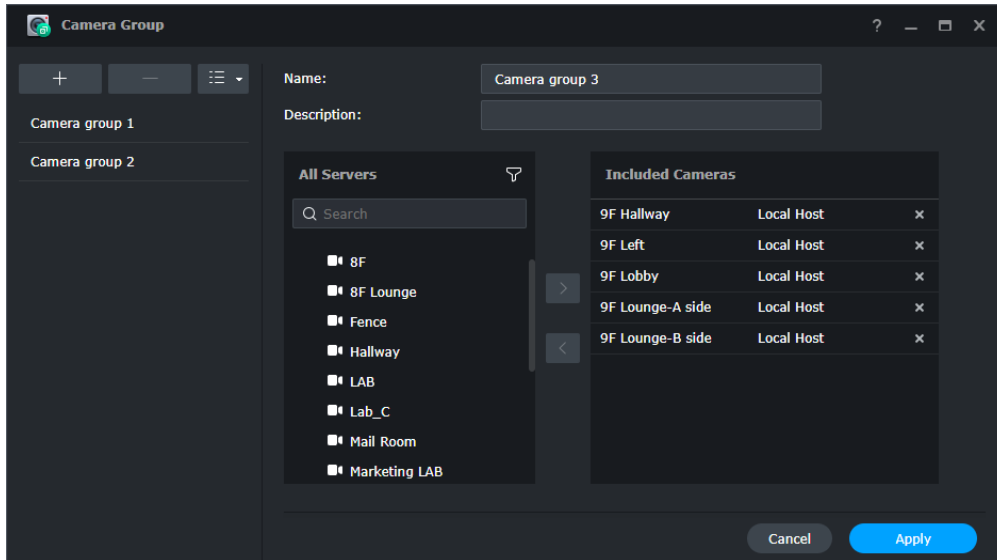
After adding cameras, you can return to **IP Camera** and modify the settings. Basic options include camera information, video stream, SRTP/HTTP connection, and security settings.

For recording, you can customize the type, schedule, and archive rules. For motion detection, choose between using Surveillance Station or built-in camera algorithms. For optimization, adjust the on-screen display, time, and regular restart schedules.

To learn more about the supported functions, refer to [this article](#).

3.3 Camera Group

Organize cameras into groups in the **Camera Group** application. You can use the groups to create **Monitor Center** layouts and grant **User** privileges in batch.



To learn more about **Camera Group**, refer to [this article](#).

3.4 Device Pack

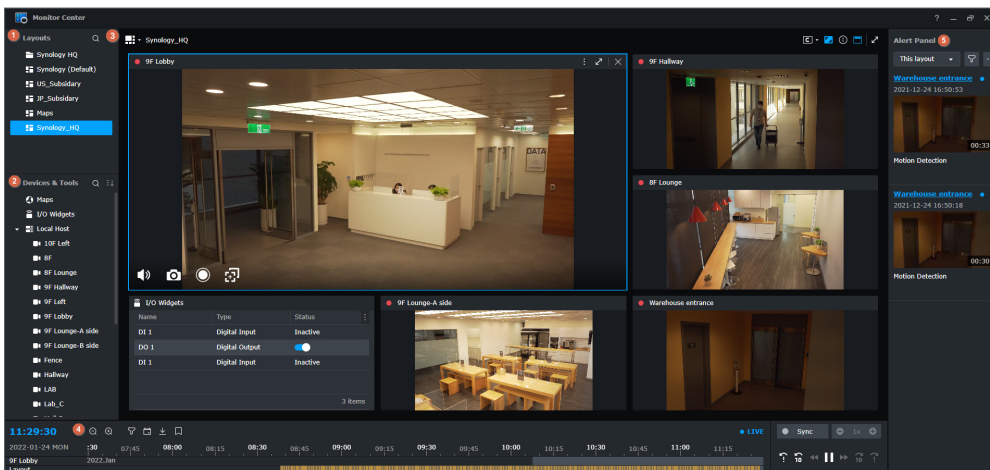
Device Pack regularly adds support for new camera models and enhances the system compatibility with updated camera firmware. Go to **Application Center** and select **Auto-update** to keep updated.

Chapter 4: Video Monitoring

This chapter introduces **Monitor Center**, multiple **Recording** features, **Maps**, and **Intelligent Video Analytics** algorithms.

4.1 Monitor Center

Monitor Center is a centralized interface for viewing camera footage. The main operations are categorized into five panels:



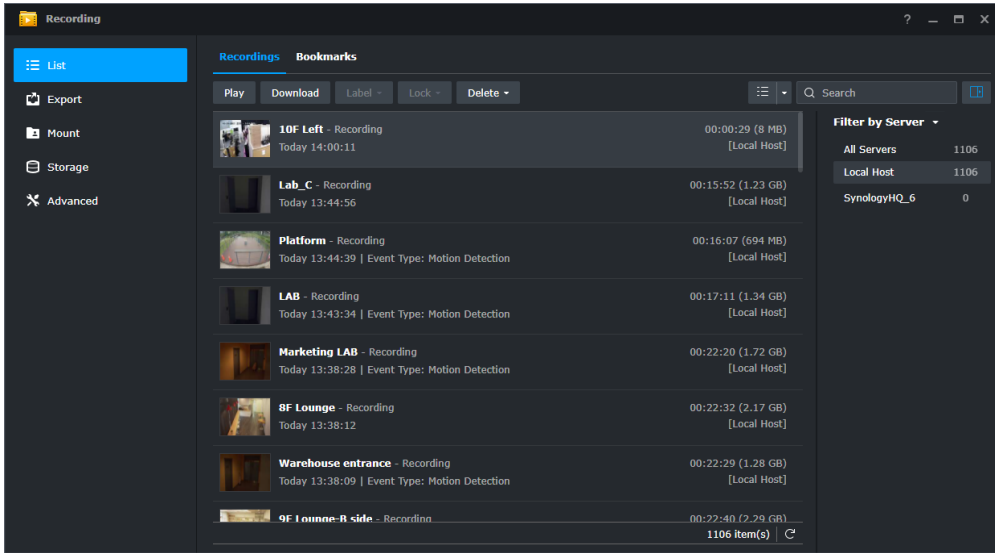
- **Layouts:** Create different layouts for different occasions and arrange them with folders. The preset layout types and templates help you quickly set up the viewer.
- **Device & Tools:** Drag and drop cameras, groups, and tools in your system.
- **Channels:** Watch up to 100 channels of videos. Drag the window frames to resize each channel and use the on-screen display buttons to control the cameras.
- **Timeline:** Scroll through the timeline to view recordings and quickly check important events with the event filter and previous/next event buttons.
- **Alert Panel:** Monitor alerts. Advanced options allow you to focus on the current layout, view historical records, and set filters to find specific entries.

To learn more about **Monitor Center**, refer to [this article](#).

4.2 Recording

4.2.1 Recording

Recording is where you play back and manage recordings. The **Bookmarks** tab and **Search** filters allow you to quickly find specific recordings. Recording storage and file settings are set here.



To learn more about **Recording**, refer to [this article](#).

4.2.2 Smart Search

Smart Search is a video analytics service supported by **Synology Surveillance Station Client**. It is designed to quickly find recordings of special events. Select a camera, detection mode, and detection zone, and set the time to start the search.



To learn more about **Smart Search**, refer to [this article](#).

4.2.3 Smart Time Lapse

Smart Time Lapse condenses long recordings into short videos, allowing you to get a quick overview of all the changes over time. You can choose to reduce the time compression ratio during the events to keep important details intact.

To learn more about **Smart Time Lapse**, refer to [this article](#).

4.2.4 Edge recording

Edge Recording uses a camera's SD card as the backup storage when the camera disconnects. When the connection resumes, Surveillance Station will automatically retrieve the videos recorded during the downtime. You can set up a retrieval schedule to control network bandwidth.

To learn more about **Edge Recording**, refer to [this article](#).

4.2.5 Snapshot

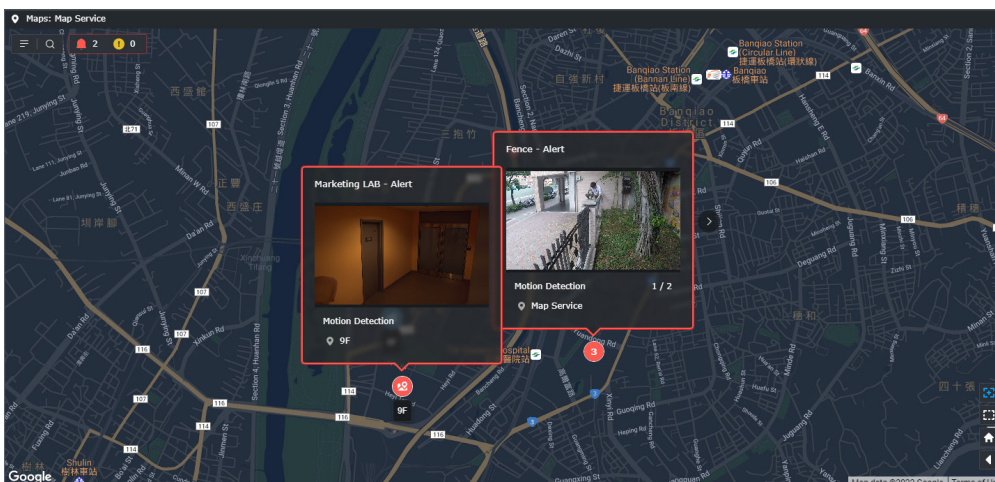
Snapshot is where you view and manage the snapshots taken in Surveillance Station. The **Snapshot Editor** supports zoom-in, blur, and mask features.

To learn more about managing **Snapshot**, refer to [this article](#).

4.3 Maps

Maps shows the locations and alerts of IP cameras, I/O modules, and other devices. You can set up an image map to monitor an individual location, create a map group to navigate between multi-floor facilities, or use OpenStreetMap, Google Maps, or a custom tile server to watch multiple locations.

The interactive functions allow you to quickly switch between different views and camera channels in **Monitor Center**.



To learn more about **Maps**, refer to [this article](#).

4.4 Intelligent Video Analytics

Surveillance Station supports multiple specialized video analytics on [Synology DVA servers](#). Use the AI-powered analytics to enhance security without additional personnel. The real-time statistics and alerts allow you to act on issues immediately.

- **Face Recognition:** Identify allowed, VIP, or prohibited personnel to control access.
- **Intrusion Detection:** Issue alerts when a vehicle or person trespasses a virtual fence.
- **People and Vehicle Detection:**
 - Detect people or vehicles in off-limits areas to increase situational awareness.
 - Use License Plate recognition to identify vehicles based on customized allowed or blocked lists.
- **People Counting:** Monitor venue footfall with two-way counters.
- **Vehicle Counting:** Gather traffic data for insights into pathway efficiency.

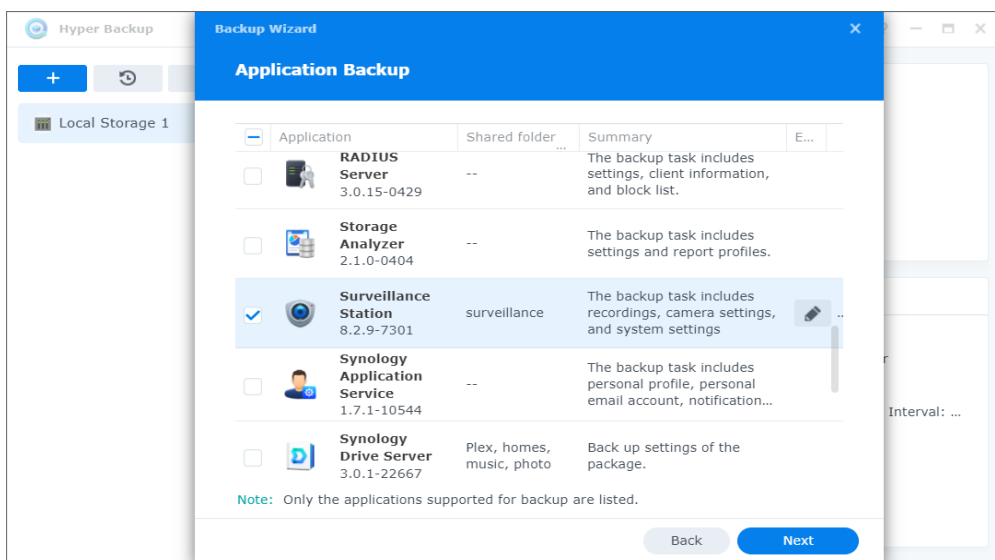
For more information, refer to the [administrator guides](#).

Chapter 5: Backup

This chapter introduces Surveillance Station backup solutions suitable for different usage scenarios. Refer to [this article](#) for the comparison.

5.1 Hyper Backup

Hyper Backup is a DSM package that backs up data from your Synology server to a designated location. You can back up Surveillance Station system configurations with or without recordings.



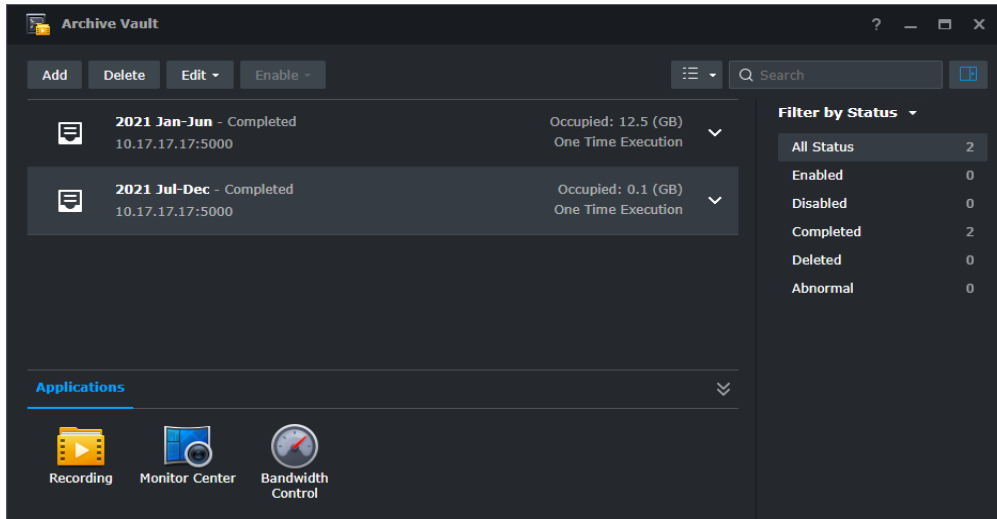
To learn more about **Hyper Backup**, refer to [this article](#).

Further reading:

- [Hyper Backup Quick Start Guide](#)

5.2 Archive Vault

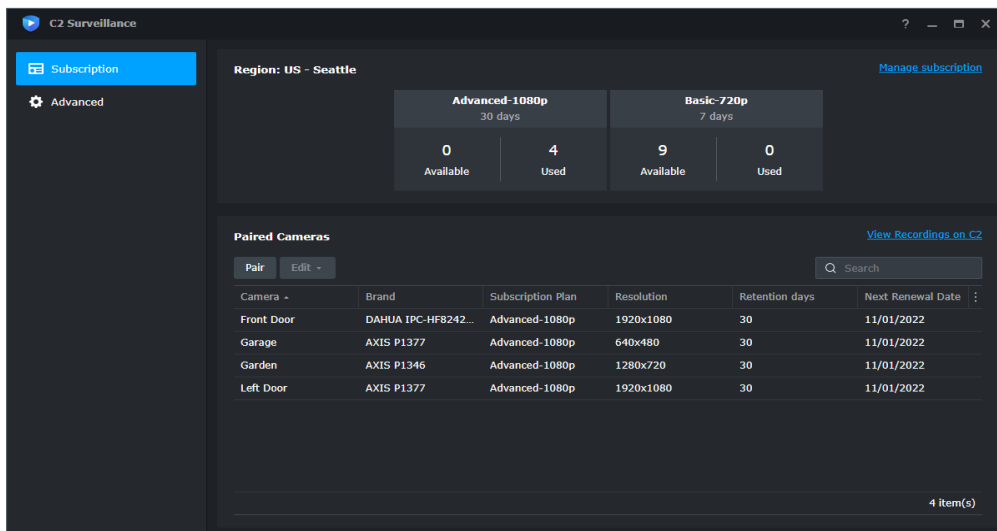
Archive Vault is a Surveillance Station application specialized to back up recordings from the local storage and remote server. It supports short backup intervals, bandwidth control schedules, and direct recording playback in Surveillance Station.

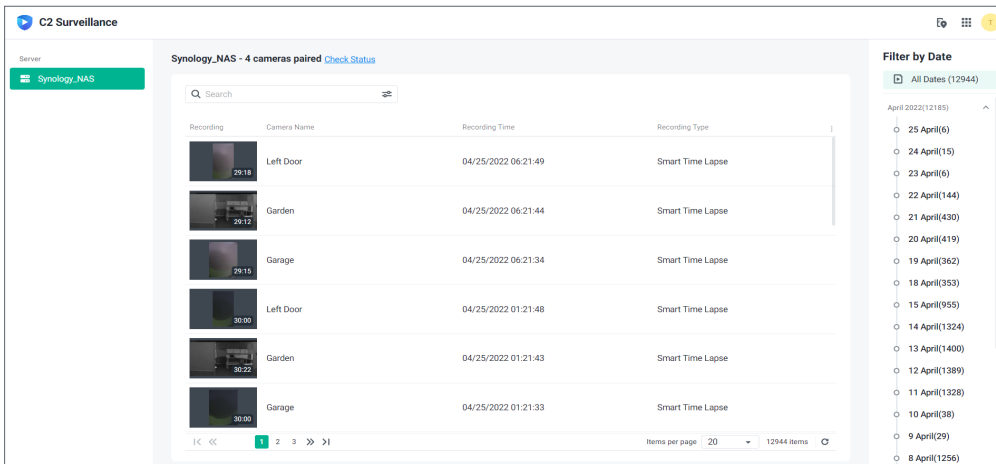


To learn more about **Archive Vault**, refer to [this article](#).

5.3 C2 Surveillance

C2 Surveillance automatically uploads recordings from Surveillance Station to **Synology C2** cloud. It extends your recording storage and secures critical evidence when the physical server is missing or damaged. You can choose a subscription plan based on the recording type, retention period, and resolution.





To learn more about **C2 Surveillance**, refer to [this article](#).

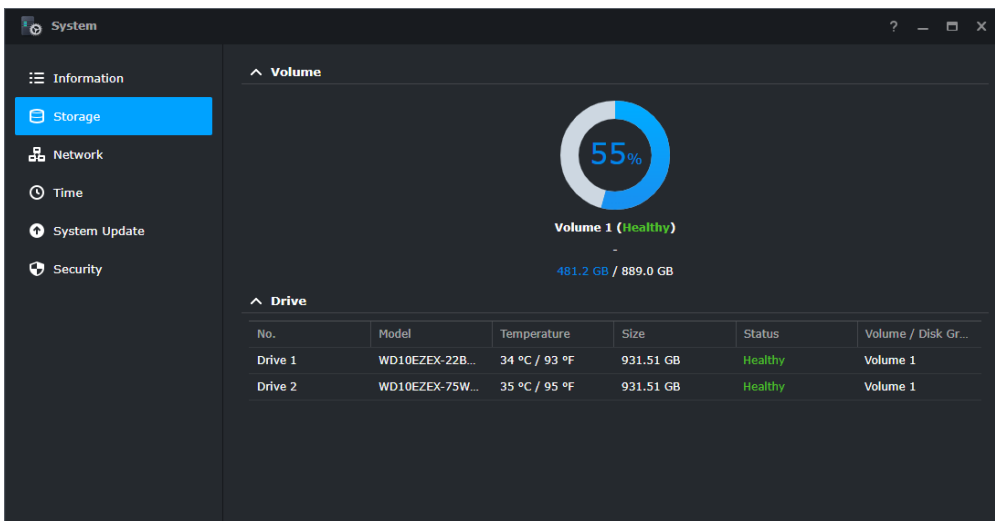
Chapter 6: Management

This chapter introduces system management, recording integration, and large-scale deployment features.

6.1 System management

6.1.1 System

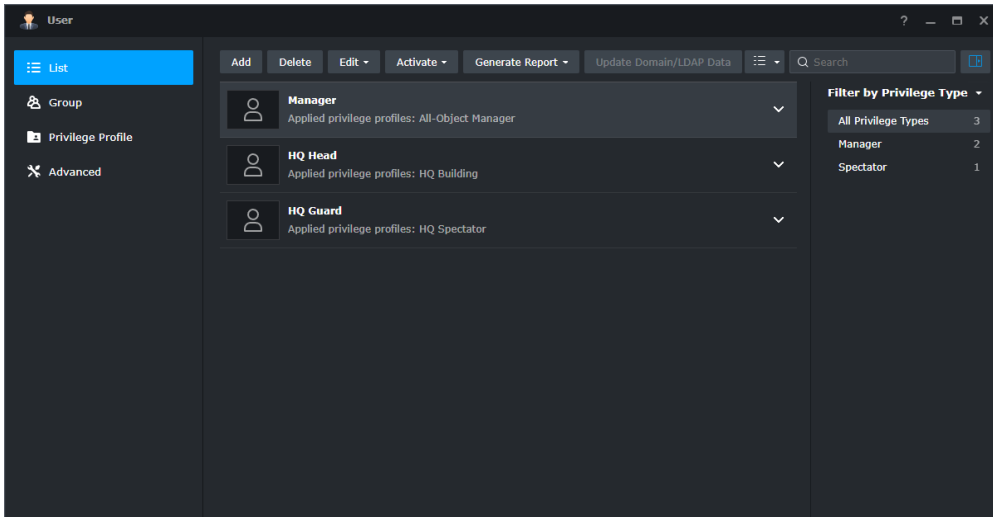
System provides an overview of your server's status. You can check the hardware specifications and storage usage, manage network and time settings, update Surveillance Station, and enable security features.



To learn more about **System**, refer to [this article](#).

6.1.2 User

User is where you manage permission settings for users and groups. Customize **Privilege Profiles** with **Spectator** and **Manager** roles to control access to surveillance services and devices. DSM, domain, and LDAP user lists can be integrated into Surveillance Station.



To learn more about **User**, refer to [this article](#).

Further reading:

- [How do I set up privilege profiles in Surveillance Station?](#)
- [How do I assign Surveillance Station privileges to domain/LDAP users?](#)

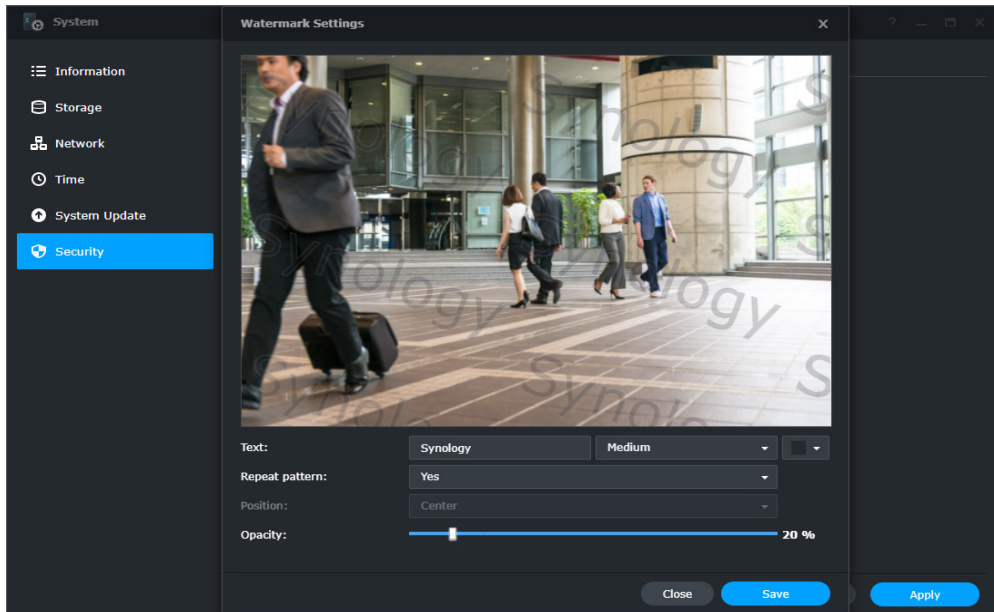
6.1.3 Client Management

Client Management provides remote control over the clients connected to your server. You can rename and control the layout display, update firmware for VisualStation models, or end unwanted connections.

To learn more about **Client Management**, refer to [this article](#).

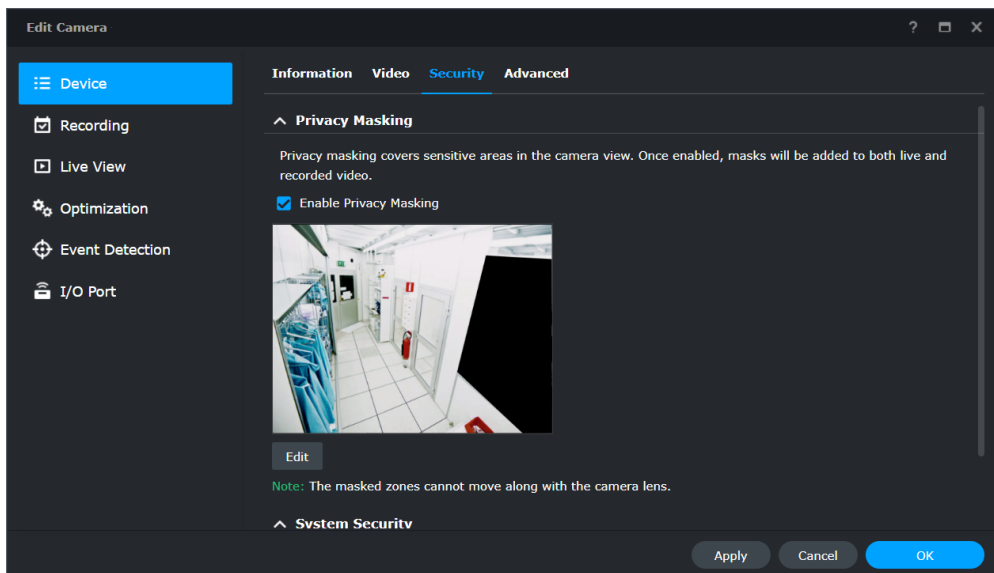
6.1.4 Footage Protection

Surveillance Station supports different features to protect your camera view. In **System > Security**, you can overlay text watermarks in video players to prevent possible leakages.



To learn more about overlaying watermarks, refer to [this article](#).

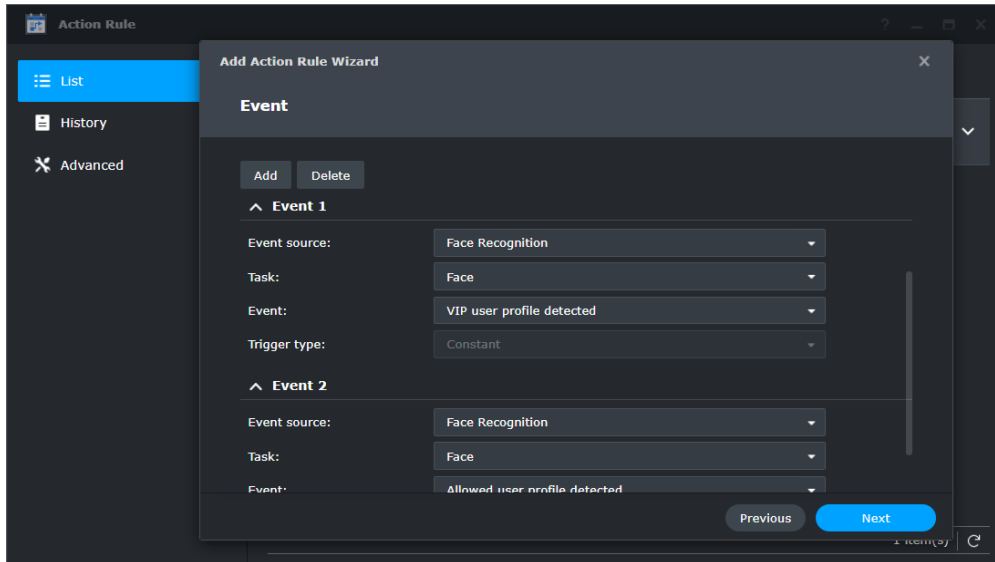
In **IP camera > Device > Security**, you can apply privacy masks to sensitive areas so that unauthorized personnel cannot see or download classified footage. Encrypting recordings helps protect them from security breaches and data leakage.



To learn more about security features, refer to [this article](#).

6.2 Action Rule

Action Rule links different surveillance functions and automates your monitoring system. You can instruct a camera to patrol between preset positions, start recording when a door lock is opened, or use webhooks to trigger specific actions on external devices and services.



To learn more about **Action Rule**, refer to [this article](#).

Further reading:

- [How do I build a Smart Home through IFTTT?](#)

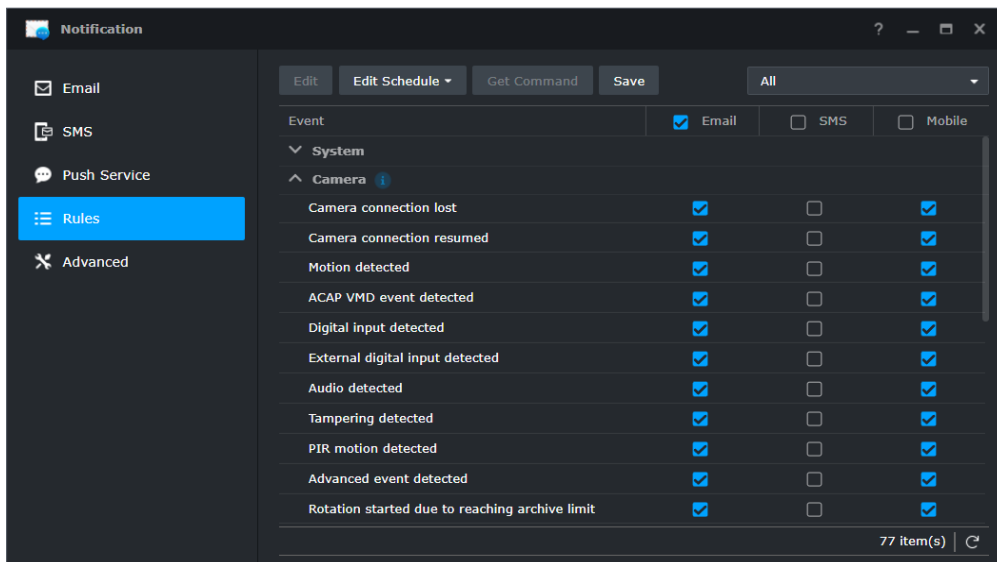
6.3 Home Mode

Enable **Home Mode** to use different recording rules when you are home or away. The mobile app **DS cam** can activate **Home Mode** automatically when your device enters the **Home location** or connects to the **Home Wi-Fi**. You can stop continuous recording and notifications while you are present and apply additional event detection rules when you leave for work.

To learn more about **Home Mode**, refer to [this article](#).

6.4 Notification

Surveillance Station supports sending notifications of system, device, and application events via email, SMS message, and push service. The event types, schedules, and contents are all customizable.



To learn more about **Notification**, refer to [this article](#).

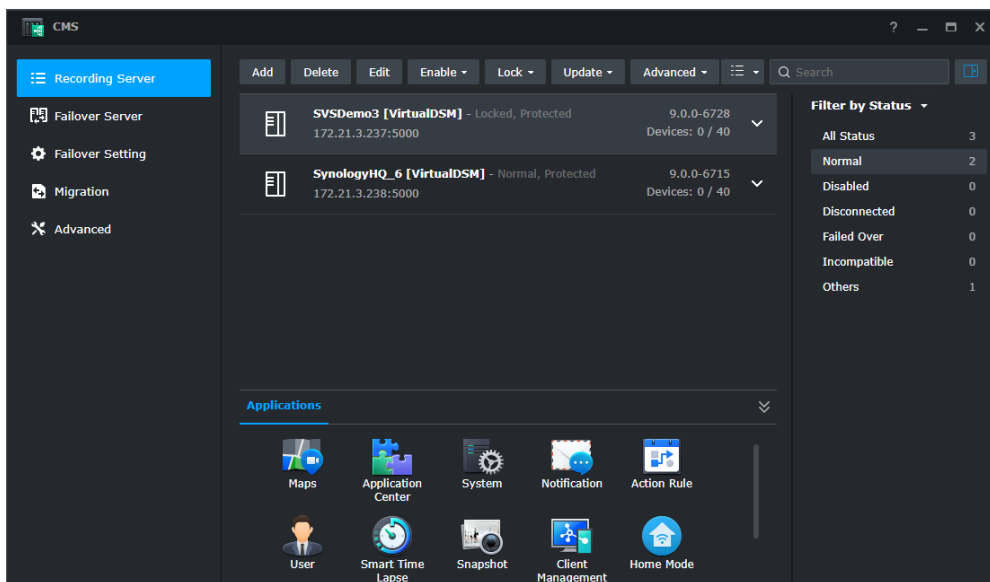
6.5 Log

Use logs to track all activities on your Surveillance Station. **System logs** record system activities such as user login statuses, device setting modifications, and storage usage updates. **Event logs** record the detected events of devices and tasks, and provide direct links to the recordings.

To learn more about logs, refer to [this article](#).

6.6 CMS

Surveillance Station Centralized Management System (CMS) allows you to host a multi-site and multi-server surveillance system. With a single portal, you can update remote servers, manage their applications, view and operate cameras and recordings, and migrate devices among the system. The automatic failover and backup services ensure uninterrupted video surveillance.



To learn more about **CMS**, refer to [this article](#). For more information about **CMS Failover**, refer to [this article](#).

Further reading:

- [How do I select a Synology product as the host server for Surveillance Station CMS structure?](#)



**SYNOLOGY
INC.**

9F, No. 1, Yuandong Rd.
Banqiao Dist., New Taipei City 220545
Taiwan
Tel: +886 2 2955 1814

**SYNOLOGY
AMERICA CORP.**

3535 Factoria Blvd SE, Suite #200,
Bellevue, WA 98006
USA
Tel: +1 425 818 1587

**SYNOLOGY
UK LTD.**

Unit 5 Danbury Court, Linford Wood,
Milton Keynes, MK14 6PL
United Kingdom
Tel.: +44 (0)1908048029

**SYNOLOGY
FRANCE**

102 Terrasse Boieldieu (TOUR W)
92800 Puteaux
France
Tel: +33 147 176288

**SYNOLOGY
GMBH**

Grafenberger Allee 295
40237 Düsseldorf
Deutschland
Tel: +49 211 9666 9666

**SYNOLOGY
SHANGHAI**

200070, Room 201,
No. 511 Tianmu W. Rd.,
Jingan Dist., Shanghai,
China

**SYNOLOGY
JAPAN CO., LTD.**

4F, No. 3-1-2, Higashikanda,
Chiyoda-ku, Tokyo, 101-0031
Japan

Synology®



synology.com

Synology may make changes to specifications and product descriptions at any time, without notice. Copyright © 2020 Synology Inc. All rights reserved. ® Synology and other names of Synology Products are proprietary marks or registered trademarks of Synology Inc. Other products and company names mentioned herein are trademarks of their respective holders.