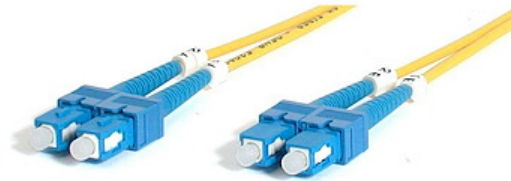


Fiber Optic Cable - Single-Mode Duplex 9/125 - LSZH - SC/SC - 2 m

Product ID: SMFIBSCSC2



The SMFIBSCSC2 2m SC to SC Single-Mode Duplex Fiber Cable features 9/125 micron fiber for high-speed, high bandwidth data transmissions over Gigabit Ethernet and Fiber Channel networks, with support for duplex single-mode applications.

This SC-SC patch cable is housed in a LSZH (Low-Smoke, Zero-Halogen) flame retardant jacket, to ensure minimal smoke, toxicity and corrosion when exposed to high sources of heat, in the event of a fire - an ideal solution for use in industrial settings, central offices and schools, as well as residential settings where building codes are a consideration.

Each Duplex 9/125 (OS1) Single-Mode Fiber Patch Cable is individually tested and certified to be within acceptable optical insertion loss limits for guaranteed compatibility and 100% reliability, and is backed by our lifetime warranty.

Certifications, Reports and Compatibility

Applications

- Used by long distance networks with mission critical data
- Telecommunication/Data communication
- Broadband systems
- Ideal solution for data applications requiring high speed data transmission

Features

- OS1 (9/125)

- LSZH (Low-Smoke, Zero-Halogen) cable jacket
- Attenuation loss meets or exceeds industry standards
- Molded connectors

Hardware

Warranty	Lifetime
Fire Rating	LSZH Rated (Low Smoke Zero Halogen)
Fiber Size	9/125

Performance

Maximum Data Transfer Rate	100Gbps
Cable Rating	10Gbps / 40Gbps / 100Gbps
Fiber Classification	OS1
Type	Single Mode

Connector(s)

Connector A	Fiber Optic SC Duplex
Connector B	Fiber Optic SC Duplex

Environmental

Operating Temperature	-20C to 60C (-4F to 140F)
Storage Temperature	-20C to 60C (-4F to 140F)
Humidity	0~90% RH

Physical Characteristics

Color	Yellow
Cable Length	6.6 ft [2 m]
Product Length	6.6 ft [2.0 m]

Packaging Information

Package Length	5.7 in [14.5 cm]
----------------	------------------

Package Width	6.1 in [15.5 cm]
---------------	------------------

Package Height	0.4 in [11 mm]
----------------	----------------

Shipping (Package) Weight	1.8 oz [50 g]
------------------------------	---------------

**What's in the
Box**

Included in Package	2m Single Mode Duplex Fiber Patch Cable SC-SC
---------------------	---

****Product appearance and specifications are subject to change without notice.***

