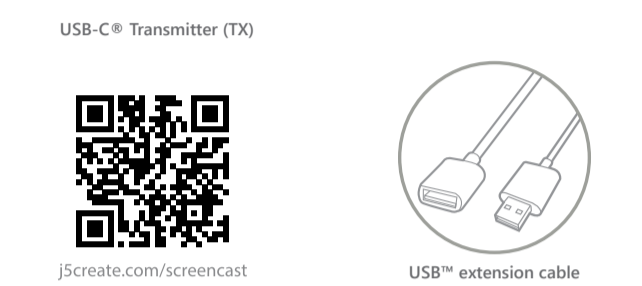


# ScreenCast Duo Mini

Wireless Display Adapter for Mobile Devices



- EN : Quick Installation Guide
- DE : Kurzanleitung Für Installation
- FR : Guide D'installation Rapide
- IT : Guida rapida all'installazione
- NL : Beknopte installatiehandleiding
- ES : Guía De Instalación Rápida
- PT : Guia de instalação rápida
- SE : Snabbinstallationsguide
- 日本語 : クイックインストールガイド
- 繁体中文 : 快速安裝手冊

RF Exposure Statement (Receive) :  
To maintain compliance with FCC's RF Exposure guidelines. This equipment should be installed and operated with minimum distance of 20cm the radiator your body. This device and its antenna(s) must not be co-located or operation in conjunction with any other antenna or transmitter.

(Receive) :  
Radiation Exposure: This equipment complies with Canada radiation exposure limits set forth for an uncontrolled environment. To maintain compliance with IC's RF Exposure guidelines. This equipment should be installed and operated with minimum distance of 20cm the radiator your body. This device and its antenna(s) must not be co-located or operation in conjunction with any other antenna or transmitter.

(Receive) :  
Exposition aux rayonnements : Cet équipement est conforme aux radiations du Canada limites d'exposition pour un environnement incontrôlé noncé d'exposition RF. Pour maintenir le respect des guides d'exposition RF d'IC, ce quipement doit être installé et actionné avec une distance minimale de 20cm le radiateur de votre corps. Cet appareil et ses antennes ne doivent pas être co-localisé ou en opération en conjonction avec toute autre antenne ou émetteur.  
Note: 5G band (W52) indoor use only.

**FCC Warning Statement**  
Changes or modifications not expressly approved by the party responsible for compliance could void the user's authority to operate the equipment. This equipment has been tested and found to comply with the limits for a Class B digital device, pursuant to Part 15 of the FCC Rules. These limits are designed to provide reasonable protection against harmful interference in a residential installation. This equipment generates uses and can radiate radio frequency energy and, if not installed and used in accordance with the instructions, may cause harmful interference to radio communications. However, there is no guarantee that interference will not occur in a particular installation. If this equipment does cause harmful interference to radio or television reception, which can be determined by turning the equipment off and on, the user is encouraged to try to correct the interference by one or more of the following measures:  
-- Reorient or relocate the receiving antenna.  
-- Increase the separation between the equipment and receiver.  
-- Connect the equipment into an outlet on a circuit different from that to which the receiver is connected.  
-- Consult the dealer or an experienced radio/TV technician for help.  
This device complies with part 15 of the FCC Rules. Operation is subject to the following two conditions: (1) This device may not cause harmful interference, and (2) this device must accept any interference received, including interference that may cause undesired operation.

**SAR statement**  
This device meets the government's requirements for exposure to radio waves. This device is designed and manufactured not to exceed the emission limits for exposure to radio frequency (RF) energy set by the Federal Communications Commission of the U.S. Government. The SAR limit set by the FCC is 1.6W/Kg. For body-worn operation, this device has been tested and meets the FCC RF exposure guidelines for use with an accessory that contains no metal and positions the device a minimum of 5mm from the body. RF exposure compliance with any body-worn accessory that contains metal was not tested and certified, and use of such body-worn accessory should be avoided. Accessory available in market and must be used to keep use distance 5mm from EUT to body-worn operation.

**ISED Canada Statement:**  
This device contains licence-exempt transmitter(s)/receiver(s) that comply with Innovation, Science and Economic Development Canada's licence exempt RSS(s). Operation is subject to the following two conditions:  
1) this device may not cause interference and  
2) this device must accept any interference, including interference that may cause undesired operation of the device.

**Radiation Exposure:** This equipment complies with Canada radiation Exposure limits set forth for an uncontrolled environment to maintain compliance with IC's RF Exposure guidelines. This device and its antenna(s) must not be co-located or operation in conjunction with any other antenna or transmitter.

**Déclaration du Canada:**  
Ce dispositif contient un (s) émetteur (s)/récepteur (s) exempté (s) de licence qui respecte l'innovation, Science et développement économique Canada a exempté le ou les RSS de licence. L'exploitation est soumise aux deux conditions suivantes:  
1) cet appareil ne doit pas causer d'interférences et  
2) ce dispositif doit accepter toute interférence, y compris toute interférence pouvant entraîner un fonctionnement indésirable du dispositif.  
Exposition au rayonnement: cet équipement est conforme au rayonnement Canada Les limites d'exposition fixées pour un environnement non contrôlé afin de maintenir la conformité avec les lignes directrices d'exposition aux RF d'IC. Ce dispositif et ses antennes ne doivent pas être co-localisés ni fonctionner en conjonction avec une autre antenne ou un autre émetteur.

The device for the band 5150-5250 MHz is only for indoor usage to reduce the potential for harmful interference to co-channel mobile satellite systems.

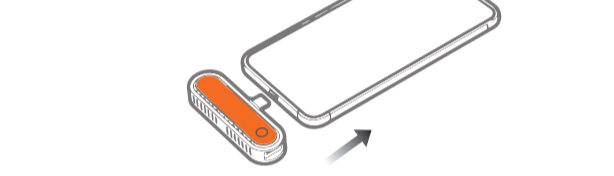
## English

- 1. Connect the RX to Your Display and Power Source**
  - Plug the HDMI™ connector into an available HDMI™ port on the display
  - Plug the USB™ connector into a USB™ Adapter (SV/1A or higher)
- 2. Power On the Display and Select Input**
  - Turn on your display to power up the ScreenCast and select the input until you see the setup screen.
  - If your display remains black, your display may not be supplying enough power. In this case, please plug the USB™ cord into a USB™ power adapter and connect it to an outlet.

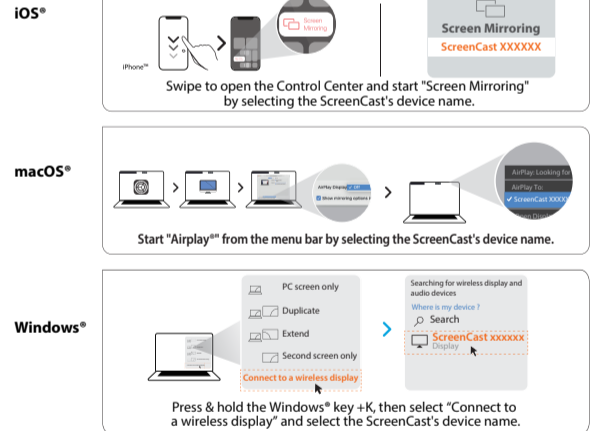


### Casting a Device with the TX (Recommended for Devices with USB-C™ DP™ Output)

- 1. Plug the TX into a laptop or mobile device**
  - Plug the TX into a USB-C™ port on a laptop or mobile device. Wait a few seconds until the flashing light on the TX stops, and it will start mirroring automatically.
  - If the TX flashes for more than 20 seconds, unplug it and then plug it back in. If it flashes for more than 20 seconds again, it will need to be paired to the RX (See the section titled "How to pair the TX with the RX" below).



- 2. Stop and restart mirroring**
  - Press the TX button to stop or restart mirroring.

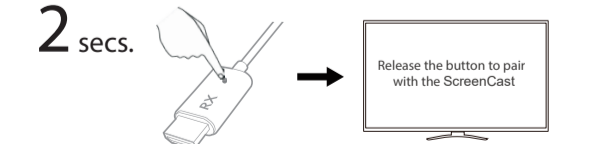


**Portrait Mode**  
With the RX connected to a screen and powered on, each short press of its button will cycle through Portrait Modes for various resolutions. This allows you to select the option that best fits your device's display.



### (Troubleshooting) How to Pair the TX with the RX

- 1. Turn on pairing mode for the receiver**
  - Press the reset button for 2 seconds on the RX. Release the button when the screen shows "Release the button to pair with the ScreenCast".



**Note:**  
The reset button on the RX has 2 functions, which function is performed depends on the duration the button is held down.  
(1) Press and hold for 2 seconds: Turns on pairing mode for the TX.  
(2) Press and hold for 10 seconds: Resets the receiver to default.

- 2. Press the button on the TX**
  - 1. Plug the TX into the laptop or mobile device to supply power.
  - 2. Press and hold the TX button when the screen displays "Ready to Pair".
  - 3. When the screen shows "Pairing", release the TX button and wait until pairing is complete.



## Deutsch

- 1. Connect to Your TV and Power**
  - Schließen Sie den HDMI™-Stecker an einen freien HDMI™-Anschluss am Fernseher/Display an.
  - Stecken Sie den USB™-Stecker in einen USB™-Adapter (SV/1A oder höher).
- 2. Fernseher einschalten und Quelle wählen**
  - Schalten Sie zur Inbetriebnahme von ScreenCast Ihren Fernseher ein und wählen Sie den Eingang, bis Sie den Einrichtungsschirm sehen
  - Si votre écran de télévision reste noir, votre téléviseur peut ne pas fournir suffisamment d'énergie. Dans ce cas, veuillez brancher le cordon USB™ dans un adaptateur de puissance USB™ et le connecter à une prise murale.
  - Falls Ihr Fernseher schwarz bleibt, liefert Ihr Fernseher möglicherweise nicht genügend Strom. In diesem Fall schließen Sie das USB™-Kabel an einen USB™-Netzteil an und verbinden dieses mit einer Steckdose.

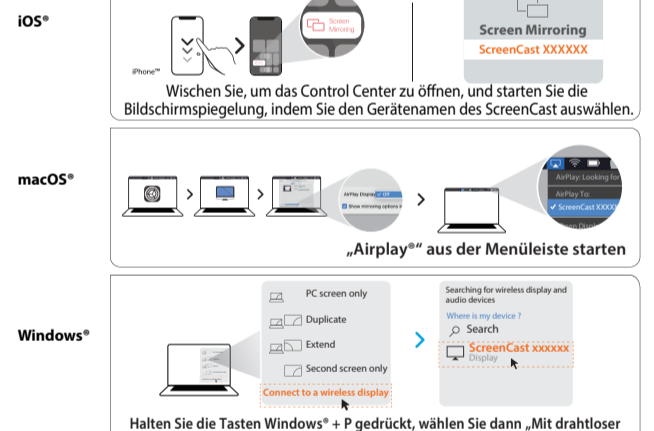


### Übertragen eines Geräts mit dem TX (empfohlen für Geräte mit USB-C™ DP™-Ausgang)

- 1. Einfach an Laptop oder Mobilgerät anschließen**
  - Stecken Sie den TX in einen USB-C™-Anschluss eines Laptops oder Mobilgeräts. Warten Sie ein paar Sekunden, bis das Licht am JVAW615 TX aufhört, und es beginnt
  - automatisch mit der Spiegelung. Bitte stellen Sie sicher, dass Sie den TX Wireless Display Receiver installieren und koppeln, wenn er länger als 20 Sekunden leuchtet.



- 2. Spiegelung stoppen und neu starten**
  - Drücken Sie die Taste TX, um die Spiegelung zu stoppen oder neu zu starten

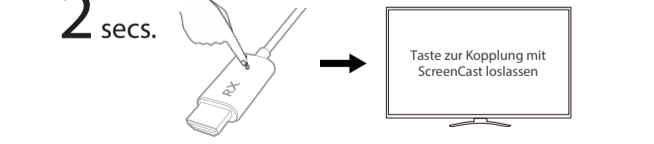


**Hochformatmodus**  
Wenn der RX mit einem Bildschirm verbunden und eingeschaltet ist, wechselt jeder kurze Tastendruck durch die Hochformatmodi für verschiedene Auflösungen. So können Sie die Option auswählen, die am besten zum Display Ihres Geräts passt.



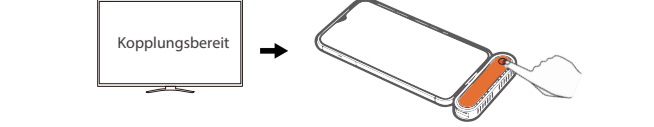
### (Troubleshooting) So koppeln Sie den TX mit dem Receiver

- 1. Pairing-Modus für Receiver einschalten**
  - Drücken Sie die Reset-Taste für 2 Sekunden am drahtlosen Anzeigebildschirm. Geben Sie die Taste frei, wenn die Einstellungen auf dem Bildschirm angezeigt werden.



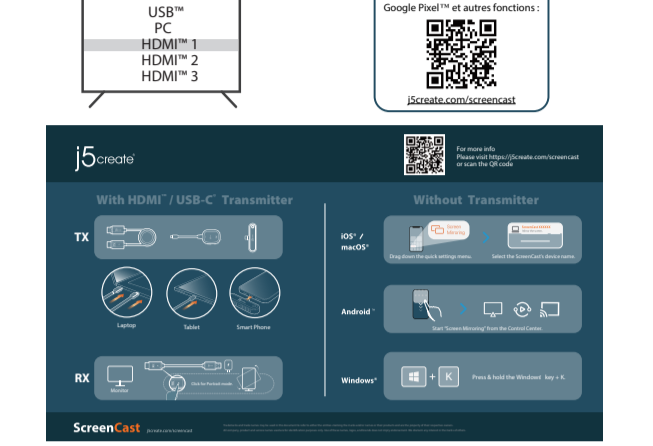
**Hinweis:**  
Die Reset-Taste am Empfänger hat 2 Funktionen. Welche Funktion ausgeführt wird, hängt davon ab, wie lange die Taste gedrückt gehalten wird.  
(1) 2 Sekunden lang drücken: Schaltet den Pairing-Modus für TX ein.  
(2) 10 Sekunden lang drücken: Setzt den Receiver auf die Standardeinstellungen zurück.

- 2. Drücken Sie die TX-Taste des**
  - 1. Schließen Sie den TX an den Laptop oder das mobile Gerät an, um Strom zu erhalten.
  - 2. Drücken und halten Sie die TX-Taste, wenn auf dem Bildschirm „Bereit zum Koppeln“ angezeigt wird.
  - 3. Wenn der Bildschirm „Kopplung“ angezeigt, lassen Sie die TX-Taste los und warten Sie, bis die Kopplung abgeschlossen ist.



## Français

- 1. Connexion de votre téléviseur et alimentation**
  - Branchez le connecteur HDMI™ dans un port HDMI™ disponible sur le téléviseur/écran
  - Branchez le connecteur USB™ dans un adaptateur USB™ (SV/1A ou plus).
- 2. Allumez la télévision et sélectionnez votre signal d'entrée**
  - Allumez votre téléviseur pour alimenter le ScreenCast et choisissez le signal d'écran montrant l'écran d'installation.
  - Si votre écran de télévision reste noir, votre téléviseur peut ne pas fournir suffisamment d'énergie. Dans ce cas, veuillez brancher le cordon USB™ dans un adaptateur de puissance USB™ et le connecter à une prise murale.

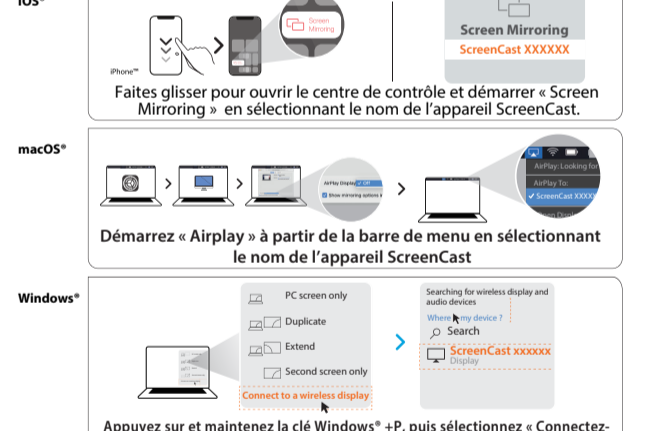
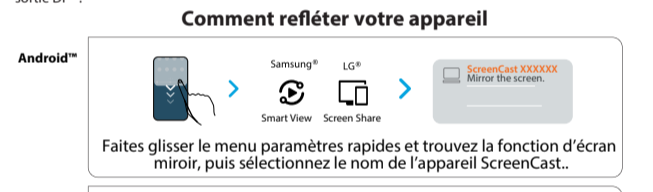


### Diffusion d'un appareil avec le TX (recommandé pour les appareils avec sortie USB-C™ DP™)

- 1. Il suffit de brancher sur un ordinateur portable ou un appareil mobile**
  - Branchez le TX sur le port USB-C™ d'un ordinateur portable ou d'un appareil mobile. Attendez quelques secondes jusqu'à ce que la lumière clignotante sur le TX s'arrête, et l'appareil commencera à se mettre en miroir automatiquement.
  - Assurez-vous d'installer et d'appairer le récepteur d'affichage sans fil TX s'il clignote pendant plus de 20 secondes.



- 2. Arrêter et redémarrer la mise en miroir**
  - Appuyez sur le bouton TX pour arrêter ou redémarrer la mise en miroir.

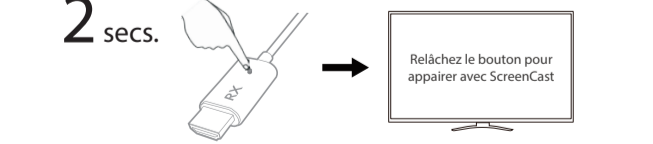


**Mode Portrait**  
Lorsque le RX est connecté à un écran et allumé, chaque pression brève sur son bouton fait défiler les modes Portrait pour différentes résolutions. Cela vous permet de sélectionner l'option qui correspond le mieux à l'affichage de votre appareil.



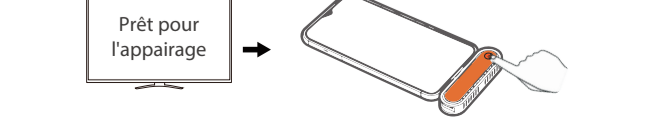
### (Dépannage) Comment coupler le TX avec un récepteur

- 1. Activez le mode d'appariement pour le récepteur**
  - Appuyez sur le bouton de redémarrage pendant 2 secondes sur le récepteur d'affichage sans fil. Relâchez le bouton lorsque l'écran de réglage s'affiche.



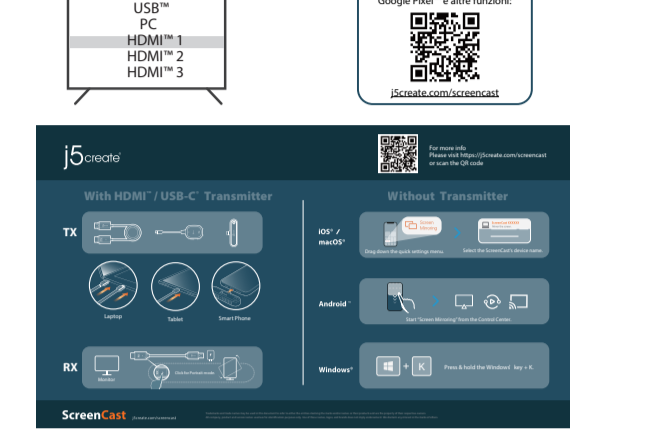
**A noter:**  
Le bouton de redémarrage sur le récepteur a 2 fonctions, la fonction effectuée dépend de la durée pendant laquelle le bouton est maintenu enfoncé.  
(1) Appuyez pendant 2 secondes: Active le mode d'appariement pour TX.  
(2) Appuyez pendant 10 secondes: Redémarrage du récepteur par défaut.

- 2. Appuyez sur le bouton TX**
  - 1. Branchez le TX à l'ordinateur portable ou à l'appareil mobile pour l'alimentation.
  - 2. Appuyez et maintenez le bouton TX lorsque l'écran affiche « Prêt à associer ».
  - 3. Lorsque l'écran indique « Association », relâchez le bouton TX et attendez la fin de l'association.



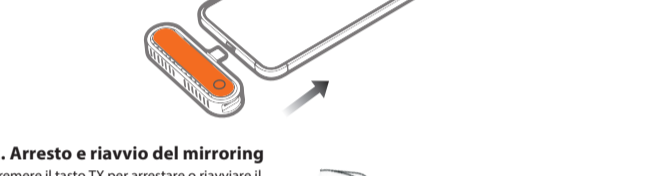
## Italiano

- 1. Collegamento al televisore e all'alimentazione**
  - Inserire il connettore HDMI™ in una porta HDMI™ disponibile sul televisore/display
  - Collega il connettore USB™ ad un adattatore USB™ (SV/1A o superiore).
- 2. Accensione del televisore e selezione dell'ingresso**
  - Accendere il televisore per accendere ScreenCast e selezionare l'ingresso finché non appare la schermata di configurazione
  - Se lo schermo del televisore rimane nero, il televisore potrebbe non fornire energia sufficiente. In tal caso, inserire il cavo USB™ in un adattatore di alimentazione USB™ e collegarlo a una presa.



### Trasmissione di un dispositivo con il TX (consigliato per dispositivi con uscita USB-C™ DP™)

- 1. Basta collegarlo a un laptop o dispositivo mobile**
  - Collegare TX a una porta USB-C™ su un laptop o dispositivo mobile. Attendere qualche secondo finché la spia lampeggiante su TX non si arresta e avvia automaticamente il mirroring.
  - Assicurarsi di installare e associare TX al ricevitore del display wireless RX se lampeggia per oltre 20 secondi.



- 2. Arresto e riavvio del mirroring**
  - Premere il tasto TX per arrestare o riavviare il mirroring.

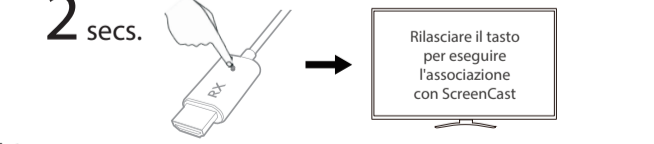


**Modalità Ritratto**  
Con il RX collegato a uno schermo e acceso, ogni breve pressione del suo pulsante scorre tra le modalità verticale per diverse risoluzioni. Questo ti consente di selezionare l'opzione che meglio si adatta al display del tuo dispositivo.



### (Risoluzione dei problemi) Come associare TX al ricevitore

- 1. Attivare la modalità di associazione per il ricevitore**
  - Premere il tasto di ripristino per 2 secondi sul ricevitore del display wireless. Rilasciare il tasto quando sullo schermo viene visualizzata la schermata di impostazione.



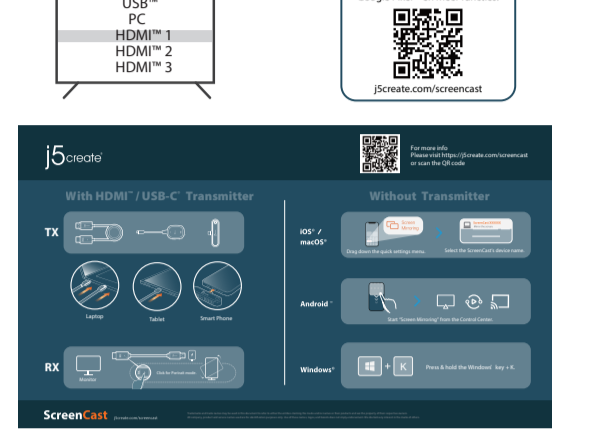
**Nota:**  
Il tasto di ripristino sul ricevitore dispone di 2 funzioni, la cui funzione viene eseguita dipende dalla durata della pressione del tasto.  
(1) Premere per 2 secondi: Attiva la modalità di associazione per TX.  
(2) Premere per 10 secondi: Ripristina le impostazioni predefinite del ricevitore.

- 2. Premere il tasto TX**
  - 1. Collega il TX al laptop o al dispositivo mobile per fornire alimentazione.
  - 2. Tieni premuto il pulsante TX quando sullo schermo compare "Pronto per l'associazione".
  - 3. Quando lo schermo mostra "Associazione", rilascia il pulsante TX e attendi il completamento dell'associazione.



## Nederlands

- 1. Aansluiten op uw tv en voeding**
  - Sluit de HDMI™-connector aan op een beschikbare HDMI™-poort op de tv/display
  - Steek de USB™-connector in een USB™-adapter (SV/1A of hoger)
- 2. TV inschakelen en ingang selecteren**
  - Zet uw tv aan om de ScreenCast in te schakelen en selecteer de ingang totdat u het instelscherm ziet.
  - Als uw tv-scherm zwart blijft, levert uw tv mogelijk niet voldoende stroom.
  - Steek in dat geval de USB™-kabel in een USB™-voedingsadapter en steek deze in een stopcontact.

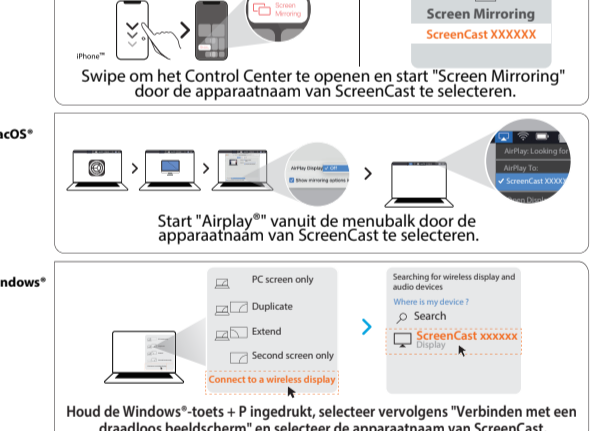


### Casten van een apparaat met de TX (aanbevolen voor apparaten met USB-C™ DP™-uitgang)

- 1. Eenvoudig aan te sluiten op een laptop of mobiel apparaat**
  - Sluit de TX aan op een USB-C™-poort van een laptop of mobiel apparaat. Wacht een paar seconden tot het lampje op de TX stopt met knipperen, en het automatisch begint te spiegelen.
  - Als de TX meer dan 20 seconden blijft branden, koppelt u deze los en sluit u het weer aan. Als het weer langer dan 20 seconden blijft branden, moet deze worden gekoppeld aan de RX.



- 2. Spiegelen stoppen en opnieuw starten**
  - Druk op de TX-knop om spiegelen te stoppen of opnieuw te starten.

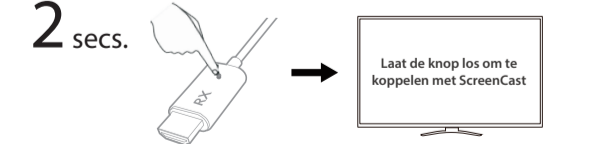


**Opmerking:** TX ondersteunt spiegelen voor alle laptops en mobiele apparaten met de besturingssystemen Windows®, macOS®, iPadOS® en Android™. De USB-C™-poort op het apparaat moet ook DP™-uitvoer ondersteunen



### (Troubleshooting) Hoe de TX te koppelen met de ontvanger

- 1. Schakel de koppelmodus in voor de ontvanger**
  - Houd de resetknop van de draadloze display ontvanger 2 seconden ingedrukt. Laat de knop los te optie kiezen die het beste bij het scherm van uw apparaat past.



**Note:**  
De RESET-knop op de ontvanger heeft 2 functies, afhankelijk van hoe lang de knop ingedrukt wordt gehouden.  
(1) Houd 2 seconden ingedrukt: Schakelt de koppelmodus in voor TX.  
(2) Houd 10 seconden ingedrukt: Hiermee herstelt u de standaardinstellingen van de ontvanger.

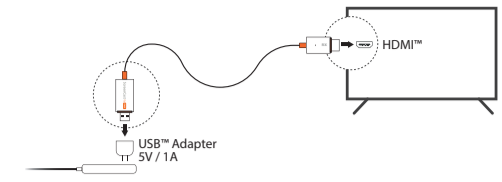
- 2. Druk op de knop van de TX**
  - 1. Sluit de TX aan op de laptop of het mobiele apparaat om van stroom te voorzien.
  - 2. Houd de TX-knop ingedrukt wanneer op het scherm "klaar om te koppelen" wordt weergegeven.
  - 3. Wanneer het scherm "Koppelen" toont, laat de TX-knop los en wacht tot het koppelen is voltooid.



# Español

## 1. Conectarse al televisor y la alimentación

- Conecte el conector HDMI™ a un puerto HDMI™ disponible del televisor o la pantalla.
- Conecte el conector USB™ a un adaptador USB™ (SV1/A o superior).



## 2. TV inschakelen en ingang selecteren

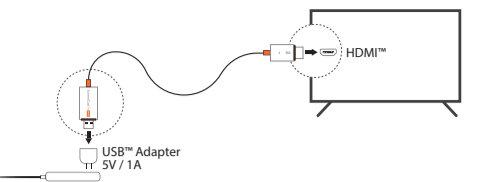
- Zet uw tv aan om de ScreenCast in te schakelen en selecteer de ingang totdat u het instel scherm ziet.
- Als uw tv-scherm zwart blijft, levert uw tv mogelijk niet voldoende stroom. Steek in dat geval de USB™-kabel in een USB™-voedingsadapter en steek deze in een stopcontact.



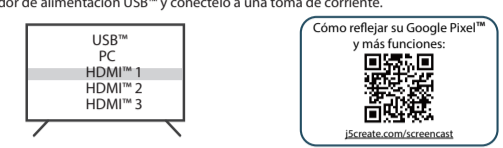
# Português

## 1. Ligar à TV e fornecer energia

- Ligue o conector HDMI™ a uma porta HDMI™ disponível na TV/monitor.
- Conecte o conector USB™ a um adaptador USB™ (SV1/A ou superior).



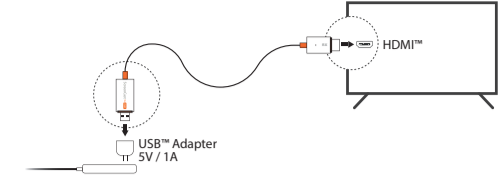
- Encienda el televisor para encender su ScreenCast y seleccione la entrada hasta que vea la pantalla de configuración.
- Si la pantalla del televisor permanece negra, es posible que dicho televisor no esté suministrando suficiente corriente. En este caso, conecte el cable USB™ a un adaptador de alimentación USB™ y conéctelo a una toma de corriente.



# Svenska

## 1. Anslut till din TV och ström

- Anslut HDMI™-kontakten till en ledig HDMI™-port på TV:n/bildskärmen.
- Anslut USB™-kontakten till en USB™-adapter (SV1/A eller högre).



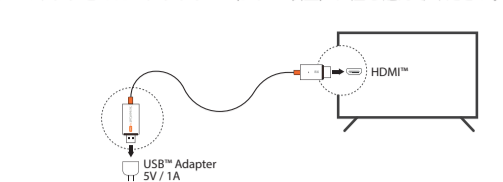
- Encienda el televisor para encender su ScreenCast y seleccione a entrada para acceder a ecra de configuração.
- Se o ecrã da sua TV não exibir qualquer imagem, a TV poderá não estar a fornecer energia suficiente. Nesse caso, ligue o cabo USB™ a um adaptador de corrente USB™ e ligue-o a uma tomada elétrica.



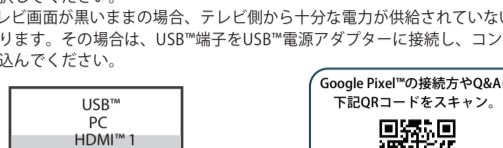
# 日本語

## 1. テレビと電源に接続する

- HDMI™端子をテレビ/プロジェクター側のHDMI™ポートに接続してください。
- USB™コネクタをUSB™アダプター (SV1/A以上) に差し込んでください。



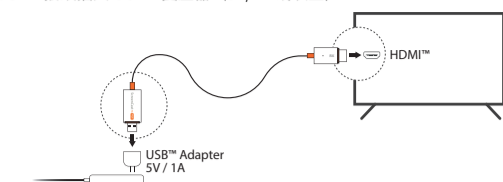
- Encienda el televisor para encender su ScreenCast y seleccione a entrada para acceder a ecra de configuração.
- Se o ecrã da sua TV não exibir qualquer imagem, a TV poderá não estar a fornecer energia suficiente. Nesse caso, ligue o cabo USB™ a um adaptador de corrente USB™ e ligue-o a uma tomada elétrica.



# 繁體中

## 1. 連接電視及電源

- 將HDMI™端連接至電視/投影機的HDMI™埠
- 將USB™接頭插入USB™變壓器 (SV1/A或以上)。



- Encienda el televisor para encender su ScreenCast y seleccione a entrada para acceder a ecra de configuração.
- Se o ecrã da sua TV não exibir qualquer imagem, a TV poderá não estar a fornecer energia suficiente. Nesse caso, ligue o cabo USB™ a um adaptador de corrente USB™ e ligue-o a uma tomada elétrica.



## 2. 打開電源並選擇ScreenCast連接至電視HDMI™孔相對應的訊號源

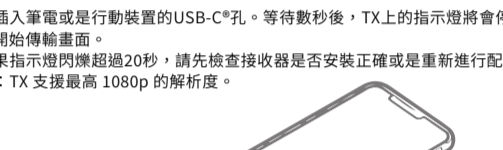
- 打開電視電源並選擇訊號輸入源，直到看到ScreenCast 設定畫面為止。
- 如果電視螢幕仍為黑色，則電視可能未提供足夠的電源。
- 在這種情況下，請將USB™端插入USB™電源供應器，並將其連接到插座。



## 將設備通過 TX 投射 (建議用於具備 USB-C® DP™ 輸出的設備)

### 1. 直接連接筆電或是行動裝置

- 將插入筆電或是行動裝置的USB-C™孔。等待數秒後，TX上的指示燈將會停止閃爍並開始傳輸畫面。
- 如果指示燈閃爍超過20秒，請先檢查接收器是否安裝正確或是重新進行配對。
- 注意：TX支援最高1080p的解析度。



### 2. 暫停或是繼續傳輸畫面

按下TX上的按鈕可暫停或是繼續傳輸畫面。



- 注意：TX適用於具備USB-C® DP™視訊輸出功能的筆電與行動裝置，相容Windows®、macOS®、iPadOS®與Android™作業系統。

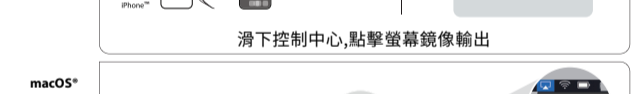
### 如何鏡像投射您的智慧裝置



下拉快速連選，找到鏡像功能，選擇ScreenCast裝置名稱



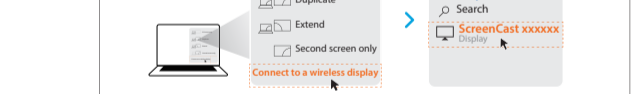
滑下控制中心，點擊螢幕鏡像輸出



開啟上方選單到 'AirPlay™' 開始，按先選擇了 'AirPlay™'。

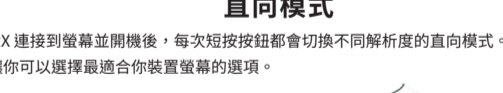


按住Windows™鍵+ P，再選擇 "連接至無線顯示器"，然後選擇ScreenCast的設備名稱。



### 直向模式

當RX連接到螢幕並開機後，每次短按按鈕都會切換不同解析度的直向模式。這讓你可以選擇最適合你裝置螢幕的選項。



# LIMITED WARRANTY

J5create offers a limited 2-year warranty. User's wear & tear damage is not included. The user shall call or email J5create customer service with the defect information of the product and obtain a return authorization number. Users are responsible for one-way return freight cost and we will take care of one-way freight back. In order to obtain a return authorization number, users should have the following information handy when calling or emailing the service team:

- a copy of the original purchase invoice to verify your warranty
- a product serial number
- a description of the problem
- customer's name, address, and telephone number

J5create does not warrant that the operation of the product will be uninterrupted or error-free. J5create is not responsible for damage arising from failure to follow instructions relating to the product's use. This warranty does not apply to: (a) consumable parts, unless damage has occurred due to a defect in materials or workmanship; (b) cosmetic damage, including but not limited to scratches, dents, and broken plastic on ports; (c) damage caused by use with non-J5create products; (d) damage caused by natural disasters; (e) damage caused by human misuse (lost, accident, abuse, misuse or other external causes); (f) damage caused by operating the product outside the permitted or intended uses described by J5create; (g) damage caused by service (including upgrades and expansions) performed by anyone who is not a representative of J5create or a J5create Authorized Service Provider; (h) a product or part that has been modified to alter functionality or capability without the written permission of J5create; or (i) if any J5create serial number on the product has been removed or defaced. If such a situation occurs, J5create will calculate the cost of materials and repair for your reference. This warranty is given by J5create in lieu of any other warranties expressed or implied.

# LIMITATION OF WARRANTY

THIS WARRANTY GIVES YOU SPECIFIC LEGAL RIGHTS, AND YOU MAY HAVE OTHER RIGHTS THAT VARY FROM STATE TO STATE (OR YOUR COUNTRY OR PROVINCE). OTHER THAN AS PERMITTED BY LAW, J5CREATE DOES NOT EXCLUDE, LIMIT OR SUSPEND OTHER RIGHTS YOU MAY HAVE, INCLUDING THOSE THAT MAY ARISE FROM THE NONCONFORMITY OF A SALES CONTRACT. FOR A FULL UNDERSTANDING OF YOUR RIGHTS YOU SHOULD CONSULT THE LAWS OF YOUR COUNTRY, PROVINCE OR STATE. TO THE EXTENT NOT PROHIBITED BY LAW IN YOUR STATE, PROVINCE, JURISDICTION OR COUNTRY, THIS WARRANTY AND THE REMEDIES SET FORTH ARE EXCLUSIVE AND IN LIEU OF ALL OTHER WARRANTIES, REMEDIES AND CONDITIONS, WHETHER ORAL, WRITTEN, STATUTORY, EXPRESS OR IMPLIED.

J5CREATE'S RESPONSIBILITY FOR MALFUNCTIONS AND DEFECTS IN HARDWARE AND/OR SOFTWARE IS LIMITED TO REPAIR OR REPLACEMENT AS SET FORTH IN THIS WARRANTY. J5CREATE'S LIABILITY DOES NOT EXTEND BEYOND THE REMEDIES PROVIDED FOR IN THIS LIMITED WARRANTY, AND J5CREATE DOES NOT ACCEPT LIABILITY FOR CONSEQUENTIAL OR INCIDENTAL DAMAGES. FOR THIRD-PARTY CLAIMS AGAINST YOU FOR DAMAGES, FOR PRODUCTS NOT BEING AVAILABLE FOR USE, OR FOR LOST OR DAMAGED DATA OR SOFTWARE, J5CREATE DOES NOT WARRANT THAT THE OPERATION OF ANY J5CREATE PRODUCT WILL BE UNINTERRUPTED OR ERROR FREE.

J5CREATE'S LIABILITY IN ANY SITUATION WILL BE NO MORE THAN THE AMOUNT YOU PAID FOR THE SPECIFIC PRODUCT THAT IS THE SUBJECT OF A CLAIM. THIS IS THE MAXIMUM AMOUNT FOR WHICH WE ARE RESPONSIBLE.

EXCEPT FOR THE EXPRESS WARRANTIES CONTAINED IN THIS WARRANTY AND TO THE EXTENT NOT PROHIBITED BY LAW, J5CREATE DISCLAIMS ALL OTHER WARRANTIES AND CONDITIONS, EXPRESS OR IMPLIED, STATUTORY OR OTHERWISE, INCLUDING WITHOUT LIMITATION, WARRANTIES OF MERCHANTABILITY, MERCHANTABLE QUALITY AND FITNESS FOR A PARTICULAR PURPOSE AND WARRANTIES AND CONDITIONS AGAINST HIDDEN OR LATENT DEFECTS. SOME STATES, PROVINCES, JURISDICTIONS OR COUNTRIES DO NOT ALLOW DISCLAIMERS OF IMPLIED WARRANTIES AND CONDITIONS, SO THIS DISCLAIMER MAY NOT APPLY TO YOU.

TO THE EXTENT SUCH WARRANTIES AND CONDITIONS CANNOT BE DISCLAIMED UNDER THE LAWS OF THE UNITED STATES, CANADA (AND ITS PROVINCES) OR OTHERWISE, J5CREATE LIMITS THE DURATION AND REMEDIES OF SUCH WARRANTIES AND CONDITIONS TO THE DURATION OF THIS EXPRESS LIMITED WARRANTY AND, AT J5CREATE'S OPTION, REPAIR OR REPLACEMENT SERVICES. SOME STATES, PROVINCES, JURISDICTIONS OR COUNTRIES MAY NOT ALLOW LIMITATIONS ON HOW LONG AN IMPLIED WARRANTY OR CONDITION MAY LAST, SO THE LIMITATION DESCRIBED ABOVE MAY NOT APPLY TO YOU.

NO WARRANTIES OR CONDITIONS, WHETHER EXPRESS OR IMPLIED, WILL APPLY AFTER THE LIMITED WARRANTY PERIOD HAS EXPIRED. SOME STATES, PROVINCES, JURISDICTIONS OR COUNTRIES DO NOT ALLOW LIMITATIONS ON HOW LONG AN IMPLIED WARRANTY OR CONDITION LASTS, SO THIS LIMITATION MAY NOT APPLY TO YOU.

WARRANTY SUPPORT ONLY APPLIES WHEN THE COVERED PRODUCT IS LOCATED WITHIN THE COUNTRY IN WHICH J5CREATE ORIGINALLY SOLD THE SYSTEM, AS REFLECTED IN J5CREATE'S RECORDS. IF YOU NEED SUPPORT FOR THE PRODUCT OUTSIDE OF THE COUNTRY OF ORIGIN (FOR EXAMPLE, WHILE TRAVELING, OR IF THE SYSTEM HAS BEEN RELOCATED TO A NEW COUNTRY), THEN J5CREATE MAY OFFER YOU OTHER SUPPORT OPTIONS FOR AN ADDITIONAL CHARGE.

For more information, please visit our website at <http://www.j5create.com>

Copyright© 2025 J5create. All rights reserved. All trade names are registered trademarks of their respective owners. Features and specifications are subject to change without notice. Product may not be exactly as shown in the diagrams.

USB and USB-C are trademarks of USB Implementers Forum, Inc., its affiliates or its respective owners, registered or used in many jurisdictions worldwide. Apple, iPhone, iOS, macOS, and iPadOS are trademarks of Apple Inc., its affiliates or its respective owners, registered or used in many jurisdictions worldwide. Miracast is a trademark of Wi-Fi Alliance, its affiliates or its respective owners, registered or used in many jurisdictions worldwide. HDMI is a trademark of HDMI Licensing Administrator, Inc., its affiliates or its respective owners, registered or used in many jurisdictions worldwide. Samsung is a trademark of Samsung Electronics Co., Ltd., its affiliates or its respective owners, registered or used in many jurisdictions worldwide. AirPlay is a trademark of Video Electronics Standards Association, its affiliates or its respective owners, registered or used in many jurisdictions worldwide. Android and Google Play are trademarks of Google LLC, its affiliates or its respective owners, registered or used in many jurisdictions worldwide. Windows is a trademark of Microsoft Corp., its affiliates or its respective owners, registered or used in many jurisdictions worldwide. LG is a trademark of LG Electronics, its affiliates or its respective owners, registered or used in many jurisdictions worldwide. Other trademarks and trade names may be used in this document to refer to either the entities claiming the marks and/or names or their products and are the property of their respective owners. All company, product and service names used are for identification purposes only. Use of these names, logos, and brands does not imply endorsement. We disclaim any interest in the marks of others.

NCC 警語

「取得審驗證明之低功率射頻器材，非經核准，公司、商號或使用均不得擅自變更頻率、加大功率或變更設計之特性及功能。低功率射頻器材之使用不得影響飛航安全及干擾合法通信；經發現有干擾現象時，應立即停止，並改善至無干擾後方得繼續使用。前項合法通信，指依電信管理法規定位之無線電通信。低功率射頻器材須符合通過合法工業、科學及醫療用電磁辐射性電機設備之干擾。」

STOP

If you have any problems with this product please contact our technical support team for assistance.

Customer Service: **888-988-0488**  
 Technical Support: **888-689-4088**  
 Email: [service@j5create.com](mailto:service@j5create.com) 202509-V2

SOPORTE TÉCNICO  
 Número gratuito: +1-888-988-0488  
 Horario de atención:  
 Lun-Vier, 10:00 am - 6:00 EST  
 Email: [service@j5create.com](mailto:service@j5create.com)

Kajiet Technology International B.V.  
 Phone Number: +31 (0) 7986117  
 Customer service hours:  
 Mon - Fri, 10:00 am - 6:00 pm EST  
 E-mail: [service@j5create.com](mailto:service@j5create.com)

TECHNISCHER SUPPORT  
 Kostenloser Anruf bei:  
 +1-888-988-0488  
 Sprechstunden:  
 Mon.-Frei, 10.00 – 18.00 EST  
 E-Mail: [service@j5create.com](mailto:service@j5create.com)

TECHNICAL SUPPORT  
 Numéru gratuit:  
 +1-888-988-0488  
 Heures d'ouverture:  
 Lun.-Ven, 10:00 am - 06:00 EST  
 Email: [service@j5create.com](mailto:service@j5create.com)

TECHNICAL SUPPORT  
 Numéru gratuit:  
 +1-888-988-0488  
 Heures d'ouverture:  
 Lun.-Ven, 10:00 am - 06:00 EST  
 Email: [service@j5create.com](mailto:service@j5create.com)

TECHNICAL SUPPORT  
 Numéru gratuit:  
 +1-888-988-0488  
 Heures d'ouverture:  
 Lun.-Ven, 10:00 am - 06:00 EST  
 Email: [service@j5create.com](mailto:service@j5create.com)

TECHNICAL SUPPORT  
 Numéru gratuit:  
 +1-888-988-0488  
 Heures d'ouverture:  
 Lun.-Ven, 10:00 am - 06:00 EST  
 Email: [service@j5create.com](mailto:service@j5create.com)

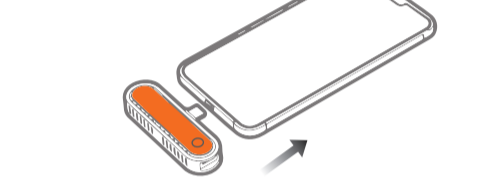
TECHNICAL SUPPORT  
 Numéru gratuit:  
 +1-888-988-0488  
 Heures d'ouverture:  
 Lun.-Ven, 10:00 am - 06:00 EST  
 Email: [service@j5create.com](mailto:service@j5create.com)

TECHNICAL SUPPORT  
 Numéru gratuit:  
 +1-888-988-0488  
 Heures d'ouverture:  
 Lun.-Ven, 10:00 am - 06:00 EST  
 Email: [service@j5create.com](mailto:service@j5create.com)

## Transmitir un dispositivo con el TX (recomendado para dispositivos con salida USB-C® DP™)

1. Simplemente conéctelo a una computadora portátil o dispositivo móvil

- Conecte el TX a un puerto USB-C™ en una computadora portátil o dispositivo móvil. Espere unos segundos hasta que la luz parpadeante del TX se detenga y comenzará a reflejarse automáticamente.
- Asegúrese de instalar y emparejar el TX con el receptor de pantalla inalámbrico RX si se enciende durante más de 20 segundos.
- Nota: el TX admite una resolución de hasta 1080p.



## 2. Detenga y reinicie la duplicación

Presione el botón TX para detener o reiniciar la duplicación.

Nota: TX admite la duplicación para todas las computadoras portátiles y dispositivos móviles que ejecutan los sistemas operativos Windows®, macOS®, iPadOS® y Android™. El puerto USB-C™ del dispositivo también debe admitir la salida DP™.



## Transmissão de um dispositivo com o TX (recomendado para dispositivos com saída USB-C® DP™)

1. Basta ligar a um computador portátil ou dispositivo móvel

- Ligue o TX a uma porta USB-C™ de um computador portátil ou dispositivo móvel. Aguarde alguns segundos até que a luz do J5create TX deixe de piscar e o espelhamento iniciará automaticamente.
- Instale e emparelhe o TX ao receptor de monitor sem fios RX se o indicador piscar durante mais de 20 segundos.
- Observação: o TX é compatível com resolução de até 1080p.



## 2. Parar e reiniciar o espelhamento

Pressione o botão do TX para parar ou reiniciar o espelhamento.

Nota: O TX suporta o espelhamento de todos os computadores portáteis e dispositivos móveis com os sistemas operativos Windows®, macOS®, iPadOS® e Android™. A porta USB-C™ do dispositivo deve também suportar a saída DP™.



## Strömma en enhet med TX (rekommenderas för enheter med USB-C®-DP™-utgång)

1. Anslut till en bärbar dator eller en mobil enhet

- Anslut TX till en USB-C™-port på en bärbar dator eller mobil enhet. Vänta några sekunder tills den blinkande lampan på J5create TX slutar att blinka, så börjar speglingen automatiskt.
- Se till att installera och koppla TX till RX-mottagaren för trådlös visning om den blinkar i över 20 sekunder.
- Obs: TX stöder upp till 1080p-upplösning.



## 2. Stoppa och starta om spegling

Tryck på TX-knappen för att stoppa eller starta om speglingen.

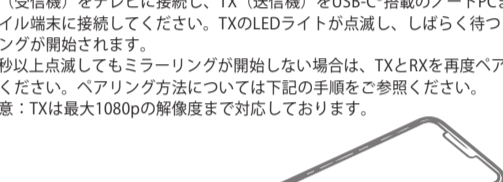
Obs! TX stöder spegling för alla bärbara datorer och mobila enheter som kör operativsystemen Windows®, macOS®, iPadOS® och Android™. USB-C™-porten på enheten måste också stödja DP™-utgång.



## TXを使用してデバイスをキャスト USB-C® DP™出力対応機器でのご使用を推奨いたします

1. ノートパソコンまたはモバイル機器に直接接続してください。

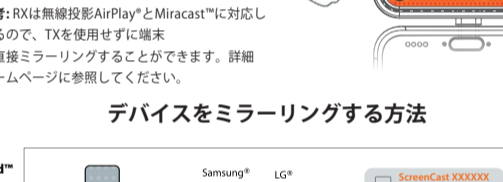
- RX (受信機) をテレビに接続し、TX (送信機) をUSB-C™搭載のノートPCまたはモバイル端末に接続してください。TXのLEDライトが点滅し、しばらく待つとミラーリングが開始されます。
- 20秒以上点滅してもミラーリングが開始しない場合は、TXとRXを再度ペアリングしてください。ペアリング方法については下記の手順をご参照ください。
- ご注意：TXは最大1080pの解像度まで対応しております。



## 2. ミラーリングを停止・再開します。

TXボタンはミラーリング停止と再開ができます

※備考: RXは無線投影AirPlay™とMiracast™に対応しているため、TXを使用せずに購入から直接ミラーリングすることが可能です。詳細はホームページに参照してください。



## デバイスをミラーリングする方法

- Android™

Abra o menu de definições rápidas e encontre a função de projeção do ecrã.



- iOS®

Abra o menu de definições rápidas e encontre a função de projeção do ecrã.



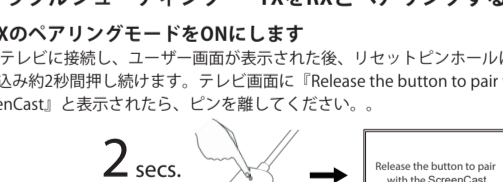
- macOS®

スワイプして、Control Centerを開き、「画面ミラーリング」を開始します

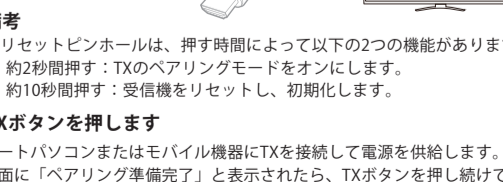


- Windows®

画面上部のメニューバーから「AirPlay™」を起動し、接続先を選択してください。



- Windows® キー+ P を押し続け、「ワイヤレスディスプレイに接続する」を選択して、「ScreenCast デバイス名」を選択してください。



## 縦向きモード

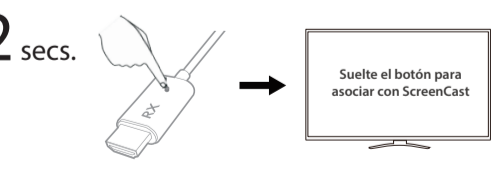
RX を画面に接続して電源を入れると、ボタンを短く押すたびにさまざまな解像度の縦向きモードを切り替えることができます。これにより、お使いのデバイスのディスプレイに最も適したオプションを選択できます。



## (Solución de problemas) Cómo emparejar el TX con el receptor

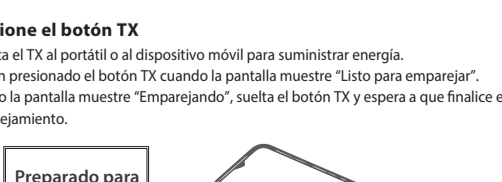
1. Active el modo de emparejamiento para el receptor

Presione el botón de reinicio durante 2 segundos en el receptor de pantalla inalámbrico. Suelte el botón cuando la pantalla muestre "Suelte el botón para emparejar con ScreenCast".



## 2. Presione el botón TX

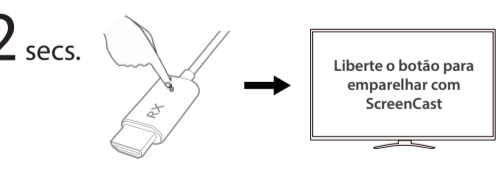
- 1. Conecta el TX al dispositivo móvil para suministrar energía.
- 2. Mantén presionado el botón TX cuando la pantalla muestre "Listo para emparejar".
- 3. Cuando la pantalla muestre "Emparejando", suelta el botón TX y espera a que el emparejamiento se complete.



## (Resolução de problemas) Como emparelhar o TX com o recetor

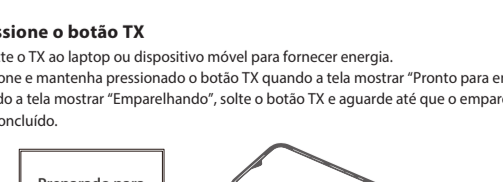
1. Ativar o modo de emparelhamento no recetor

Pressione o botão de reposição durante 2 segundos no recetor de monitor sem fios. Liberte o botão quando o ecrã mostrar a mensagem "Liberte o botão para emparelhar com ScreenCast".



## 2. Pressione o botão TX

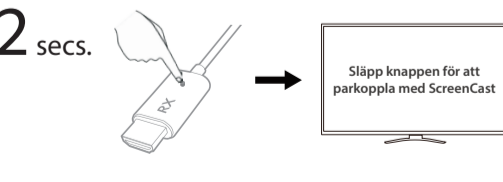
- 1. Conecte o TX ao laptop ou dispositivo móvel para fornecer energia.
- 2. Pressione e mantenha pressionado o botão TX quando a tela mostrar "Pronto para emparelhar".
- 3. Quando a tela mostrar "Emparelhando", solte o botão TX e aguarde até que o emparelhamento seja concluído.



## (Felsökning) Hur du kopplar ihop TX med mottagaren

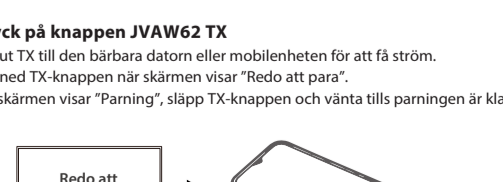
1. Aktivera kopplingsläget på mottagaren

Tryck på återställningsknappen i 2 sekunder på den trådlösa mottagaren. Släpp knappen när skärmen visar "Släpp knappen för att koppla ihop med ScreenCast".



## 2. Tryck på knappen J5A06 62 TX

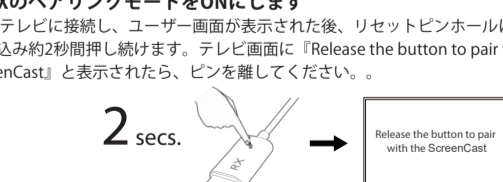
- 1. Notera att TX till en bärbar dator eller mobilenheten för att få ström.
- 2. Håll ned TX-knappen när skärmen visar "Redo att para".
- 3. När skärmen visar "Parning", släpp TX-knappen och vänta tills parningen är klar.



## (問題排除) 如何配對TX與接收器

1. 將接收器設定為配對模式

請確認您的接收器軟體已經更新到最新版。使用取卡針或類似工具按住接收器上的重置孔達2秒，當螢幕畫面呈現 "Release the button to pair with ScreenCast" 時即可放開。



## 2. 按住 TX 上的按鈕

- 1. 將 TX 插入筆記型電腦或行動裝置以供电。
- 2. 當螢幕顯示 "準備配對" 時，長按 TX 按鈕。
- 3. 當螢幕顯示 "正在配對" 時，放開 TX 按鈕，並等待配對完成。