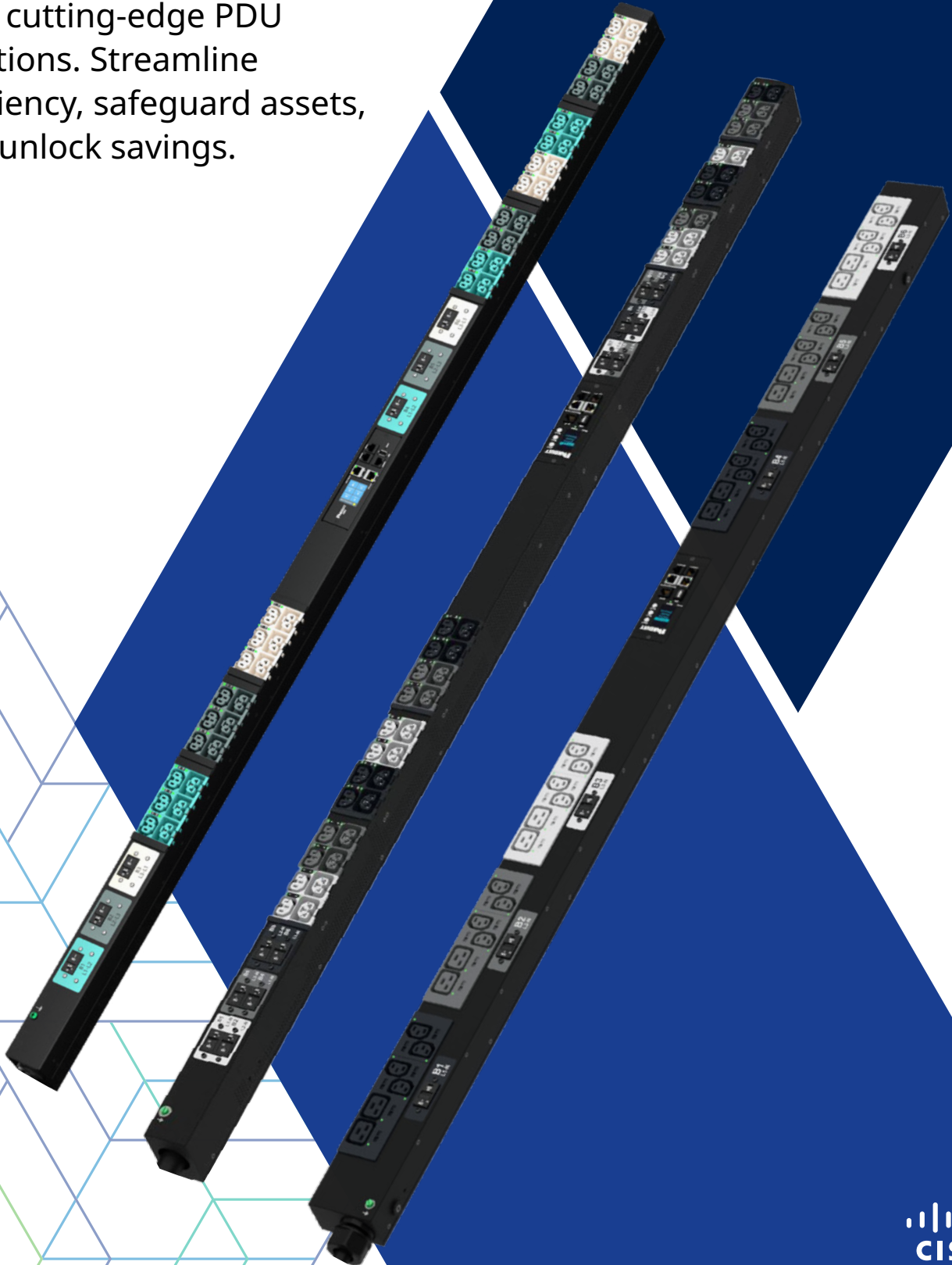


Power Distribution Units

PANDUIT®

Empower your operations with cutting-edge PDU solutions. Streamline efficiency, safeguard assets, and unlock savings.



Welcome to Panduit® Power Distribution

In today's dynamic IT landscapes, efficiency and reliability aren't just goals — they're necessities. Our innovative PDU solutions, harmonized with Cisco Nexus platforms are engineered to elevate your operations, merging cutting-edge technology with uncompromised performance. Panduit PDUs stand as the cornerstone of power management, ensuring seamless operation of your equipment in data centers and high-density IT environments.

Value Proposition



Quality & Reliability

3-Year standard and 5-Year extended warranty.



Real-Time Monitor

Real-time Monitoring of Power, Environmental & Cabinet Security.



High Temperature

Built with premium components to withstand 140°F (60°C) at full load.



Plug & Play Accessories

Variety Environmental & Cabinet Access Control Accessories.



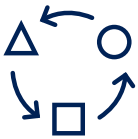
High Density Power

Unique outlets design for high outlet density.



Multi-Device WebGUI

Enhanced User-Experience with a self adjusting WebGUI that senses the device you are on.



Hot-Swappable & Upgradable

Hot-Swappable Controller with large OLED display.



Multi-Color

A variety of colored PDU chassis, power cords, and cable ties.



Hardened Security

Enhanced security with certificate-based advanced asymmetric encryption, validated and hardened with multiple security scanning tools.



Cisco Compatible

Panduit's intelligent PDUs are compatible with Cisco Nexus Dashboard software to enhance its insights related to Energy Savings and Sustainability.



1 GB On Board Ethernet Connection

Reduces deployment time and labor as PDU auto negotiates to 1GB network switches.

Power up your knowledge!

Scan the QR code to connect with our critical power specialist today and discover how we can supercharge your data center.



Table of Contents

| | |
|---|---|
| PDU Applications.....4 | Monitored Per Outlet Series.....13 |
| Explore the versatility of PDUs across various industries, delivering reliable power where it's needed most. | Provides intricate power insights with dual-level monitoring at both the input and individual outlet, bringing unparalleled control over your energy distribution. |
| Cisco Compatibility & Integration.....5 | Monitored Switched Per Outlet Series.....14 |
| Discover seamless integration with Cisco systems, enhancing network efficiency and power management. | Harmonizes comprehensive power monitoring at input and output levels with the strategic capability of individual outlet switching, epitomizing the pinnacle of integrated power management solutions. |
| Critical Power Integrated Solutions.....6 | Universal Input Series.....15 |
| Dive into solutions that dive into solutions that keep your critical systems running without interruption thanks to robust and reliable power delivery. | Enhance the safety and efficiency of your infrastructure with our advanced sensors and security solutions. |
| Series Features.....7 | Sensors & Security.....16 |
| Unveil the unique features of our PDU series, designed to meet the diverse needs of modern data centers. | Enhance the safety and efficiency of your infrastructure with our advanced sensors and security solutions. |
| Which Panduit PDU is Right for You?.....8 | Power Cords.....17 |
| Review the key features and benefits of our various PDU devices. | Connect with confidence using our durable and reliable power cords, tailored for a variety of applications. |
| Applications & Mounting.....9 | SiteCommand Utility Software.....18 |
| Gain installation insights to help prepare for installation day. | Elevate PDU management with our SiteCommand Utility software that is designed for efficiency and reliability. |
| Basic Series.....10 | How to Select a PDU.....19 |
| Meet daily power distribution needs effortlessly, allowing devices to stay powered from UPS systems, generators, or direct mains supply. | Determine which PDU is right for you based on power capacity, input and output configurations, monitoring features and scalability needs. |
| Metered Input Series.....11 | Product Part Numbers & Specifications.....20 |
| Specializes in precise input power monitoring, providing continuous surveillance and stability of your power service. | Find detailed specifications and part numbers to select the perfect PDU solutions for your specific requirements. |
| Monitored Switched Series.....12 | |
| Merges meticulous input power monitoring with dynamic outlet switching, offering a robust solution for sophisticated power management | |

PDU Applications & Sectors

Panduit Power Distribution Units are designed for the modern data center, integrating seamlessly with facility systems. Our PDUs offer versatile options in density, capacity, and connectivity, future-proofing your infrastructure to meet diverse application needs.

In the era of hybrid IT, our PDUs deliver reliable power across sectors like education, retail, healthcare, and finance. Our on-premise and colocation solutions enhance operational efficiency with a resilient architecture, future-proofing your operations for tomorrow's challenges.



Colocation Data Center

Offers multi-tenant data centers dual feeds, precise metering, and management, ensuring availability, billing accuracy, and space efficiency.



Education

Provides uninterrupted power to tech-enhanced classrooms and labs, supporting a seamless educational experience.



Financial

Secures transactional and operational continuity with robust power supply and real-time monitoring, fortifying trust and stability.



Healthcare

Delivers critical power reliability to protect medical records and data systems, underpinning patient care and data security.



Retail

Drives continuous operation of sales and digital systems, enhancing customer engagement and operational efficiency.



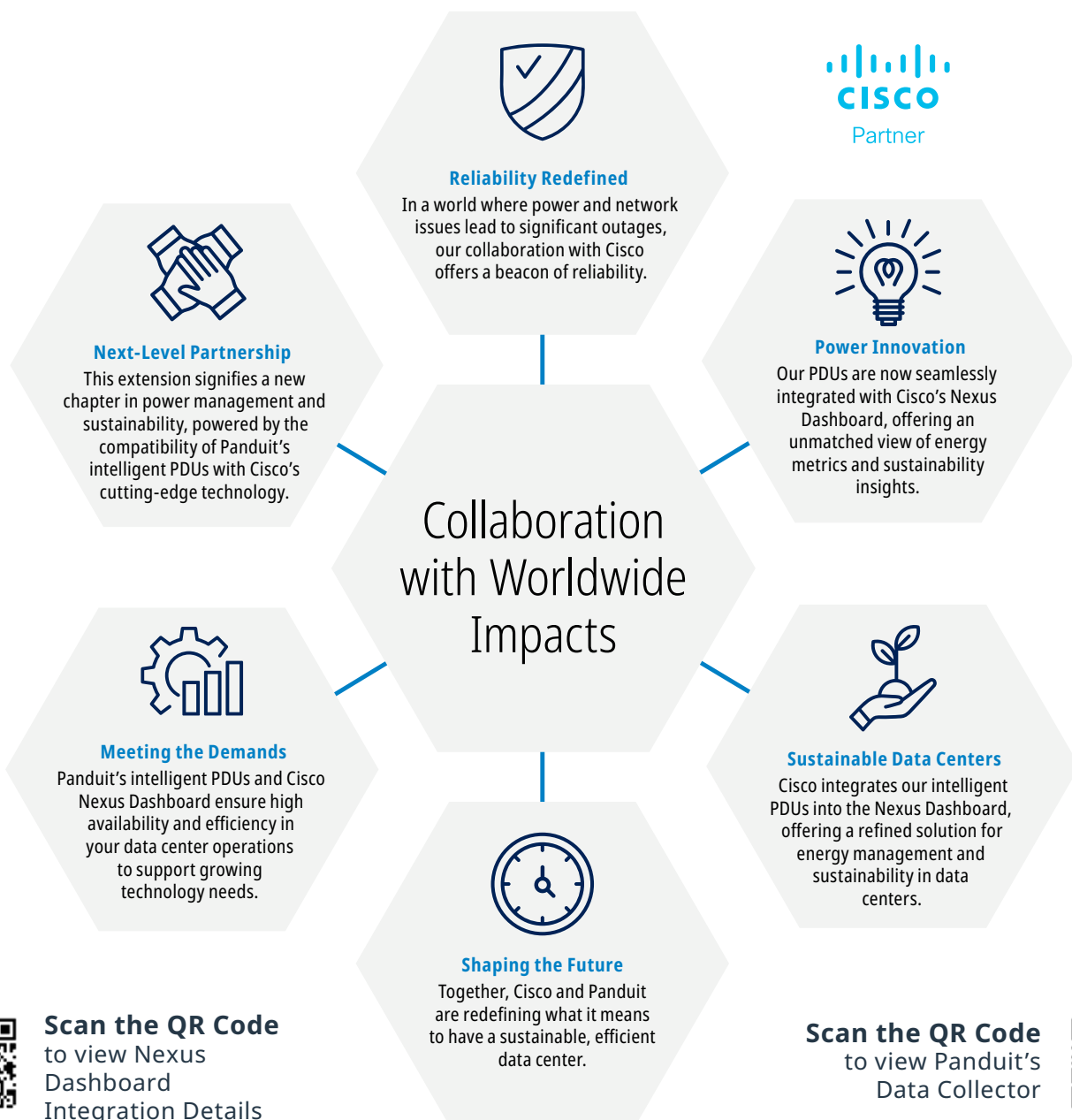
On-Prem Data Centers

Supplying a range of PDUs from basic to intelligent, tailored for the diverse and evolving needs of modern data centers.

Cisco Integration

Panduit's Intelligent Power Distribution Units (PDUs) seamlessly integrate with Cisco Nexus Dashboard software, elevating energy savings and sustainability insights to new heights. Through the innovative Panduit Data Collector, power data is effortlessly harvested from Panduit PDUs and relayed to the Nexus Dashboard via validated APIs, streamlining the management of both existing and new PDUs.

This integration empowers data center operators with unparalleled visibility — down to the site, equipment, or individual PDU outlet — providing actionable insights that drive energy efficiency, reduce operational costs, and enhance sustainability strategies. Discover the future of intelligent power management with Panduit, where advanced technology meets environmental stewardship.



Scan the QR Code
to view Nexus
Dashboard
Integration Details

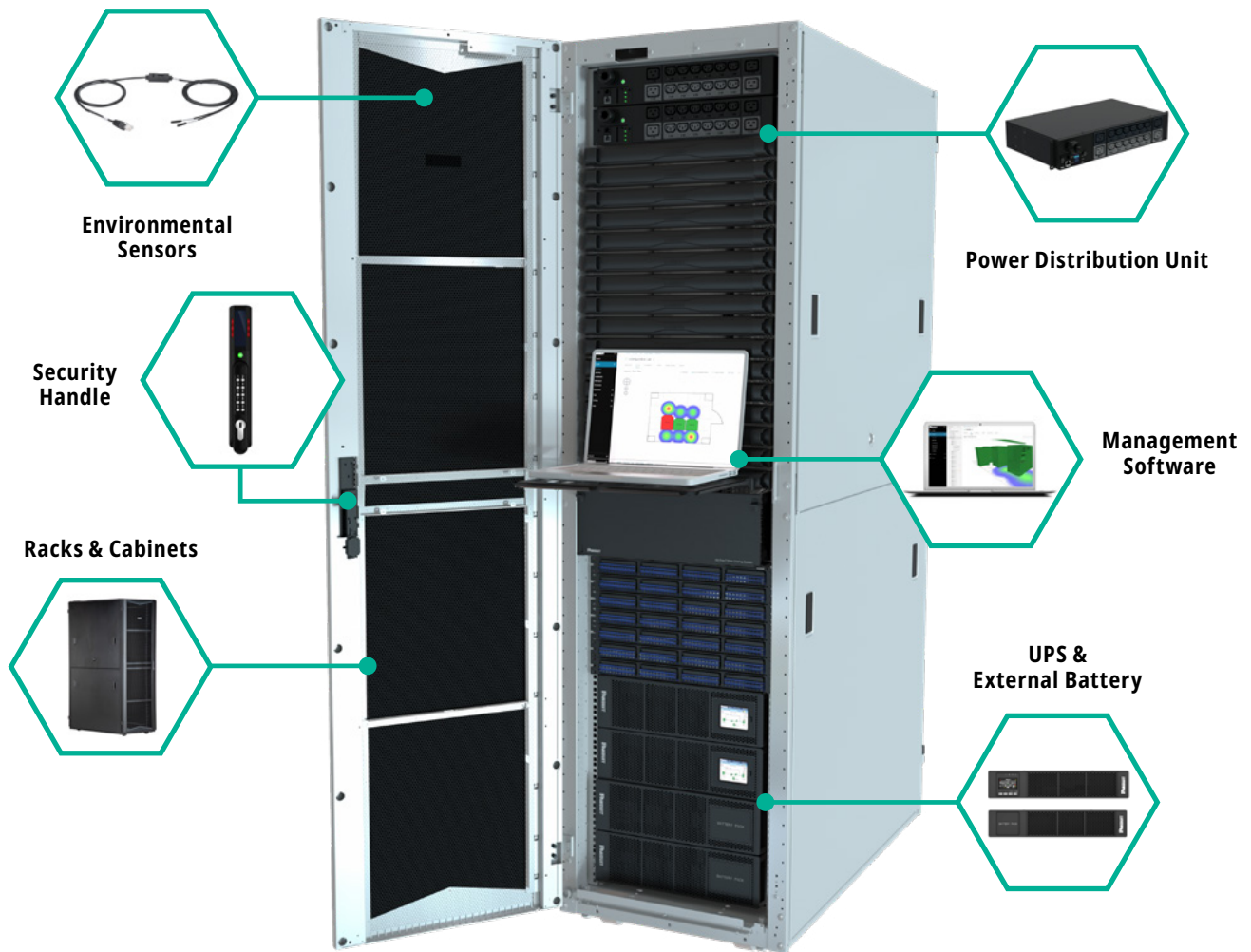
Scan the QR Code
to view Panduit's
Data Collector



Panduit Integration

Panduit's integrated power management ecosystem is the intelligent core of your data center, with our PDU functioning as the pivotal connection point. This setup delivers a seamless interaction between the resilience of UPS systems, the comprehensive distribution capabilities of our PDUs, and the acute awareness brought in by intelligent environmental sensors and rack access control. Together, they form a cohesive network, all monitored under the vigilant eyes of third-party DCIM software.

This intelligent integration allows for precise power monitoring, proactive environmental adaptation, and fortified security, all within the robust framework of our 2- and 4-post racks and enclosures. It's this strategic alliance of technology that grants you sophisticated control over your data center operations, optimizing every aspect from performance to resource utilization, and ensuring that your critical power needs are not just met but anticipated and managed with precision.



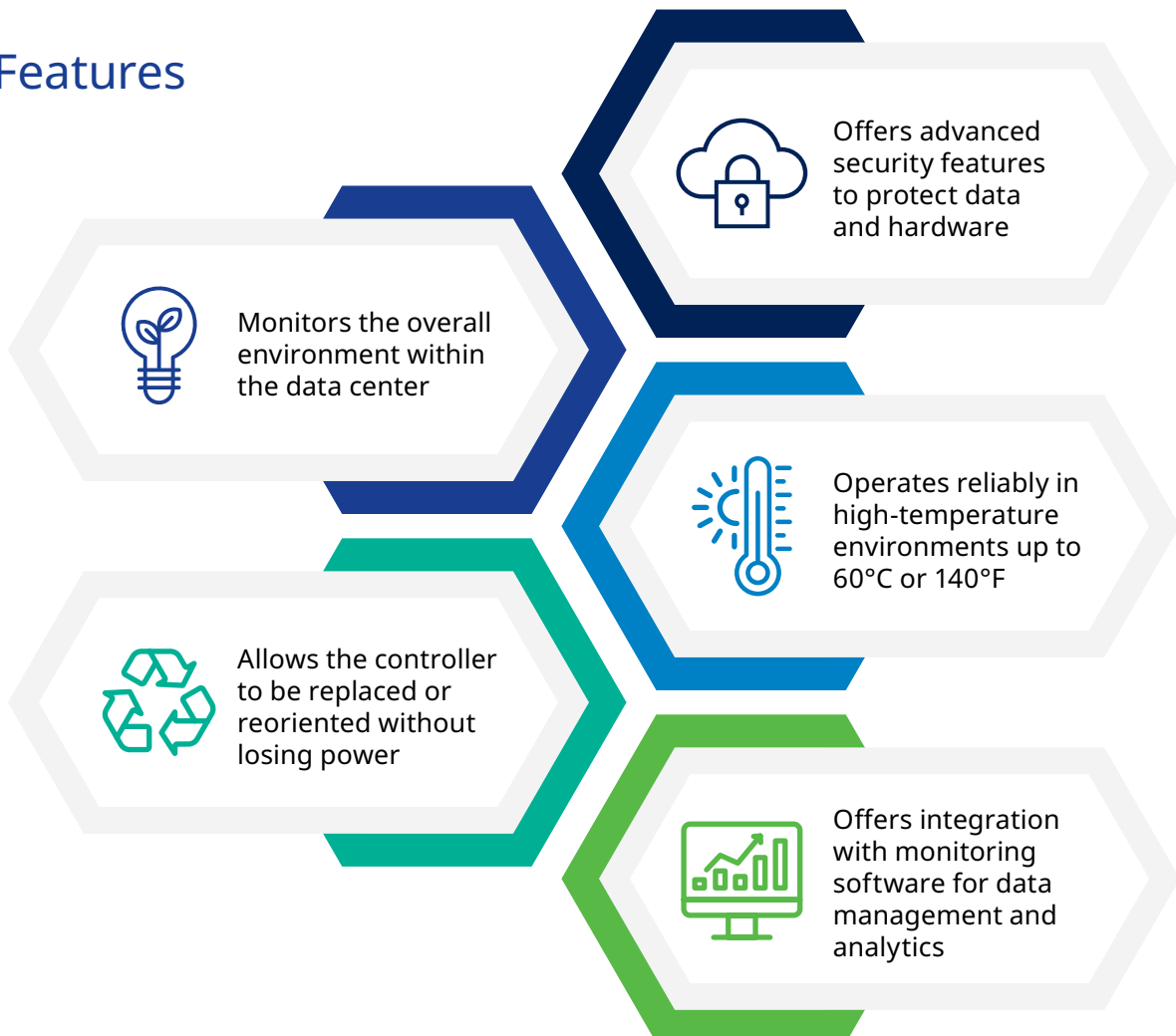
Scan the QR Code
to dive into our critical power solutions



PDU Series Features

| Feature/Series | Basic PDU | MI Series | MS Series | MPO Series | MSPO Series |
|---|-----------|-----------|-----------|------------|-------------|
| Non-Intelligent Power Distribution | ✓ | - | - | - | - |
| Intelligent Power Monitoring | - | ✓ | ✓ | ✓ | ✓ |
| Outlet Level Switching | - | - | ✓ | - | ✓ |
| Input Level Monitoring | - | ✓ | ✓ | ✓ | ✓ |
| Outlet Level Monitoring | - | - | - | ✓ | ✓ |
| Optimized Form Factor | ✓ | - | - | - | - |
| Environmental Monitoring | - | ✓ | ✓ | ✓ | ✓ |
| Security Handle Integration | - | ✓ | ✓ | ✓ | ✓ |
| High-Temperature Operation (60°C/140°F) | ✓ | ✓ | ✓ | ✓ | ✓ |
| Hot-Swappable Controller | - | ✓ | ✓ | ✓ | ✓ |
| Cloud Software Integration | - | ✓ | ✓ | ✓ | ✓ |
| 4:1 Combination Outlets | - | ✓ | ✓ | - | ✓ |

Key Features



Which Panduit PDU is Right for You?

G5 vs. G6 vs. EL2P



| Feature and Benefit | G5 | G6 | EL2P |
|--|----|----|------|
| Auto-Rotating UI | - | - | ✓ |
| Touchscreen Display | - | - | ✓ |
| Secure Zero Touch Provisioning (sZTP) | - | - | ✓ |
| Meets UL-2900-1 & IEC 62443-4-2 | - | - | ✓ |
| 802.1X Network Security | - | - | ✓ |
| Meets 0.5% Metering Accuracy | - | - | ✓ |
| Redfish API Integration | - | ✓ | ✓ |
| Mixed Part Number Daisy-Chaining | - | - | ✓ |
| 360° Multi-Axis Swivel Input Cord | - | - | ✓ |
| Multiple Power Cord Accepting Outlet Modules (C14 and C5) and (C14/C15/C20/21) | - | ✓ | ✓ |
| Horizontal Form Factor | ✓ | - | - |
| Basic Non-Network Intelligence | ✓ | - | - |
| NEMA Outlets | ✓ | ✓ | - |
| Universal Input Plug | ✓ | - | - |
| Hot-Swappable Controller | ✓ | ✓ | ✓ |
| Dual 1G Ethernet | - | - | ✓ |
| 60°C Operating Temperature | ✓ | ✓ | ✓ |
| Toolless Mounting | ✓ | ✓ | ✓ |

Applications & Mounting



Chassis and Plug Location

180-Degree symmetric vertical chassis with end-exiting cable simplifies the supply chain by enabling a single part number for both overhead and under floor power.



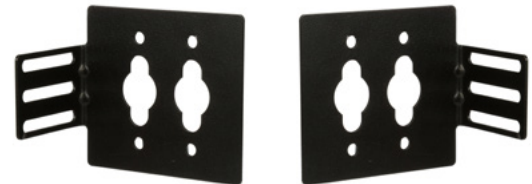
Universal Inlet

Future-proof your infrastructure with a single PDU that can be deployed globally by simply swapping in the appropriate facility type cord for your region, allowing power scaling from 5kW to 27.6kW.



Combination Outlets

Provide ultimate flexibility, allowing each outlet to be used as a C21, C19, C15, or C13, catering to various application needs.



Tool-less Mounting

Effortlessly mount your PDU into a rack with tool-less installation using a convenient button slot, saving time and simplifying setup.



Hot-Swappable Controllers

Allow complete removal of the network interface module without affecting outlet status, making them ideal for service or repair.



Rotatable Controllers

Enables a single part number to be used for both overhead and underfloor power management.

Basic PDU

Our Basic PDUs offer optimized horizontal/vertical form factors, minimizing space in a rack/cabinet while maintaining outlet count. They deliver our renowned quality and reliability without the extra cost of network intelligence or outlet control. In the “last mile” of the data center power chain, only the best will do.

Enhanced Circuit Protection

- Equipped with built-in magnetic hydraulic circuit breakers
- Provides robust defense against short circuits and overloads
- Not susceptible to high operating temperature environments
- Guarantees safe, uninterrupted operation
- Single and three phase power

Heavy-Duty Power Input

- Durable, NRTL-approved input cords and plugs ensure longevity even in the harshest environments.
- The power cord exits through the end cap, enabling a single part number to be used for both overhead and underfloor power configurations.
- Models 20A and below feature C20 inlet with a detachable input cord

Reliable Power Outlet Connectivity

- Locking power cord compatible
- Cable tie slots for enhanced cord retention (on select models)
- High quality components

Simplified Installation

- Tool-less mounting buttons enable quick and secure setup of vertical PDUs
- Facilitates effortless attachment to PDU mounting bracket keyhole slots

Robust Construction

- Constructed with a durable metal housing and premium components
- Built to last, ensuring increased longevity and reliability
- Designed to perform even in demanding high-temperature environments

Comprehensive Offering

- Models offering up to 54 outlets and 22kW
- Designed for versatile rack integration
- Accommodates any data center layout

Versatile Mounting Options

- Mounting buttons, brackets and hardware is included
- Vertical models feature threaded inserts on 3 sides to enable either back or side mounting
- Horizontal models are EIA-310 compliant



Characteristics of Power Distribution Units



Non-Intelligent PDU



Optimized Form Factor



High-Temp Operations



Input Level Monitoring



Intelligent Power Monitoring



Outlet Level Switching



Outlet Level Monitoring



Cisco Compatible

Metered Input

Metered Input PDUs add network intelligence to measure power consumption, energy use, and circuit breaker amperage. Pair with sensors and electronic handles for access control and environmental sensing.

Comprehensive Monitoring

- Advanced monitoring capabilities deliver precise, reliable power distribution
- Essential for mitigating disruptions and upholding seamless operations
- SNMP compatibility sends power data to your BMS/DCIM
- Built-in alerts and user-defined thresholds notify you of abnormalities before they become critical

Outlet Configuration

- Features a strategic mix of C13 and C19 outlets
- Models like the P42D20M adapt to diverse equipment needs
- Offers unparalleled device compatibility and configuration flexibility

High Capacity

- Tailored for intense power requirements
- PDUs like the P42D21M model excel in high-power demand settings
- Provides robust support for numerous devices
- 12 circuit breakers, 60/63 amp, 415 V, three-phase 34.6kW (North America) and 43.6kW (EMEA) power capacity

Environmental Monitoring

- Extend vigilance to environmental conditions
- Proactively protect IT assets from environmental threats
- Provides insights for optimal operational efficiency

Security and Safety Features

- Enhance data center integrity with physical access monitoring
- Significantly reinforce cabinet security
- Safeguard critical systems and data

Vertical and Tool-less Mounting

- Tool-less mounting buttons enable quick and secure setup of vertical PDUs
- Facilitates effortless attachment to rack keyhole slots



**EL2P PDU
E42D20L**

Characteristics of Power Distribution Units

- | | | | |
|--|--|---|--|
|  Non-Intelligent PDU |  Optimized Form Factor |  High-Temp Operations |  Input Level Monitoring |
|  Intelligent Power Monitoring |  Outlet Level Switching |  Outlet Level Monitoring |  Cisco Compatible |

Monitored Switched

When users require advanced management and control, Switched PDUs set the standard in IT environments. Building on the intelligence of the Metered Input family, Switched PDUs offer outlet control (on/off/power cycle). For distributed sites and lights-out environments, they are indispensable.

Advanced Monitoring

- Provide comprehensive input power monitoring
- Obtain precise outlet control
- Include power cycling capabilities
- Deliver superior power distribution oversight

Capacity Planning and Optimization

- Provide intricate data for meticulous capacity planning
- Support power resource optimization
- Obtain efficient and cost-effective power infrastructure management

Enhanced Security and Uptime

- Secures data center infrastructure with remote power control
- Grants outlet control to authorized personnel only
- Allows for swift incident response
- Streamlines power management

Integration with DCIM Solutions

- Designed for integration with DCIM solutions
- Provide a holistic view of the data center's power, space, and environment
- Enhance management efficiency

Environmental Monitoring

- Extend vigilance to environmental conditions
- Proactively protect IT assets from environmental threats
- Operate at optimal efficiency



**EL2P
E42E24L**

Characteristics of Power Distribution Units

- | | | | |
|--|--|---|--|
|  Non-Intelligent PDU |  Optimized Form Factor |  High-Temp Operations |  Input Level Monitoring |
|  Intelligent Power Monitoring |  Outlet Level Switching |  Outlet Level Monitoring |  Cisco Compatible |

Monitored Per Outlet

Monitored per Outlet PDUs offer precise power monitoring at the outlet level, ensuring optimal power distribution for data centers. This series enhances energy management, operational efficiency, and reliability in demanding environments.

Detailed Power Monitoring

- Maximize energy efficiency with Detailed Power Monitoring
- Enable meticulous tracking of power consumption at each outlet
- Optimize energy management
- Reduce costs with unparalleled precision

Environmental Monitoring

- Maintain the perfect environment for IT equipment with environmental monitoring
- Monitor critical environmental factors
- Confirms hardware operates within optimal conditions

Load Monitoring

- Achieve perfect load distribution with load monitoring
- Keep power loads balanced and efficient
- Prevent overloads
- Maximize operational performance

Alarm Thresholds

- Stay ahead of potential issues with customizable alarm thresholds
- Receive immediate notifications for any irregularities
- Allow for swift action to maintain continuity



E36F13L

Characteristics of Power Distribution Units

- | | | | |
|--|--|---|--|
|  Non-Intelligent PDU |  Optimized Form Factor |  High-Temp Operations |  Input Level Monitoring |
|  Intelligent Power Monitoring |  Outlet Level Switching |  Outlet Level Monitoring |  Cisco Compatible |

Monitored Switched Per Outlet

Monitored & Switched per Outlet PDU series offer granular power monitoring and remote outlet switching. Enhance operational safety and optimize power usage with environmental monitoring, perfect for data centers prioritizing efficiency, security, and detailed power management.

Granular Control and Monitoring

- Dive deep into power management with granular control and monitoring
- Offer detailed insights and remote control over each outlet
- Elevate troubleshooting and power management strategies
- Achieve new heights of precision and convenience

Environmental Sensing

- Allows IT equipment to thrive under ideal conditions with environmental sensing capabilities
- Monitor temperature and humidity
- Safeguard technology from environmental threats
- Optimize performance and longevity

Efficient Energy Management

- Provide critical insights into power consumption
- Empower cost-effective, sustainable decisions
- Optimize power distribution needs

Integration with DCIM

- Achieve a holistic view of your data center's power and environmental health
- Seamless integration with DCIM systems
- Enhance operational insights
- Merge power management with comprehensive infrastructure oversight



**EL2P PDU
E42G20L**

Characteristics of Power Distribution Units

 Non-Intelligent PDU

 Intelligent Power Monitoring

 Optimized Form Factor

 Outlet Level Switching

 High-Temp Operations

 Outlet Level Monitoring

 Input Level Monitoring

 Cisco Compatible

Universal

The universal PDU offers modularity and scalability with changeable input cords for global compatibility. Its 4:1 outlets (C13/C15/C19/C21) accommodate various cords, making it adaptable for multiple input and output configurations, aiming for a truly “universal” PDU.

Global Versatility

- Universal inlet design
- Broad voltage compatibility
- Redefine power distribution
- Simplify global deployments
- Reduce inventory challenges

Scalable Power

- Panduit’s uPDU supports power requirements from 3.3kW to 27.6kW
- Offers flexibility to adapt to changing power needs
- Simply swap out the input cord
- No need to replace the entire PDU due to increased power requirements

Environmental Sensing

- Built-in sensors for real-time monitoring
- Safeguard critical infrastructure from environmental risks
- Maintain optimal operational conditions

Energy Management

- Offers advanced analytics on energy consumption, promoting cost savings and sustainability by optimizing energy use

DCIM Integration

- Enables seamless integration with DCIM systems
- Provides comprehensive insights into power and environmental conditions
- Supports strategic decision making



**G5 PDU
P36E50M**

Characteristics of Power Distribution Units

- | | | | |
|--|--|---|--|
|  Non-Intelligent PDU |  Optimized Form Factor |  High-Temp Operations |  Input Level Monitoring |
|  Intelligent Power Monitoring |  Outlet Level Switching |  Outlet Level Monitoring |  Cisco Compatible |

Panduit Integration

Panduit Environmental Sensors and Smart Rack Handles paired with a Panduit iPDU and UPS provide real-time monitoring and advanced physical security to ensure your operations run smoothly and securely.

Environmental Sensors

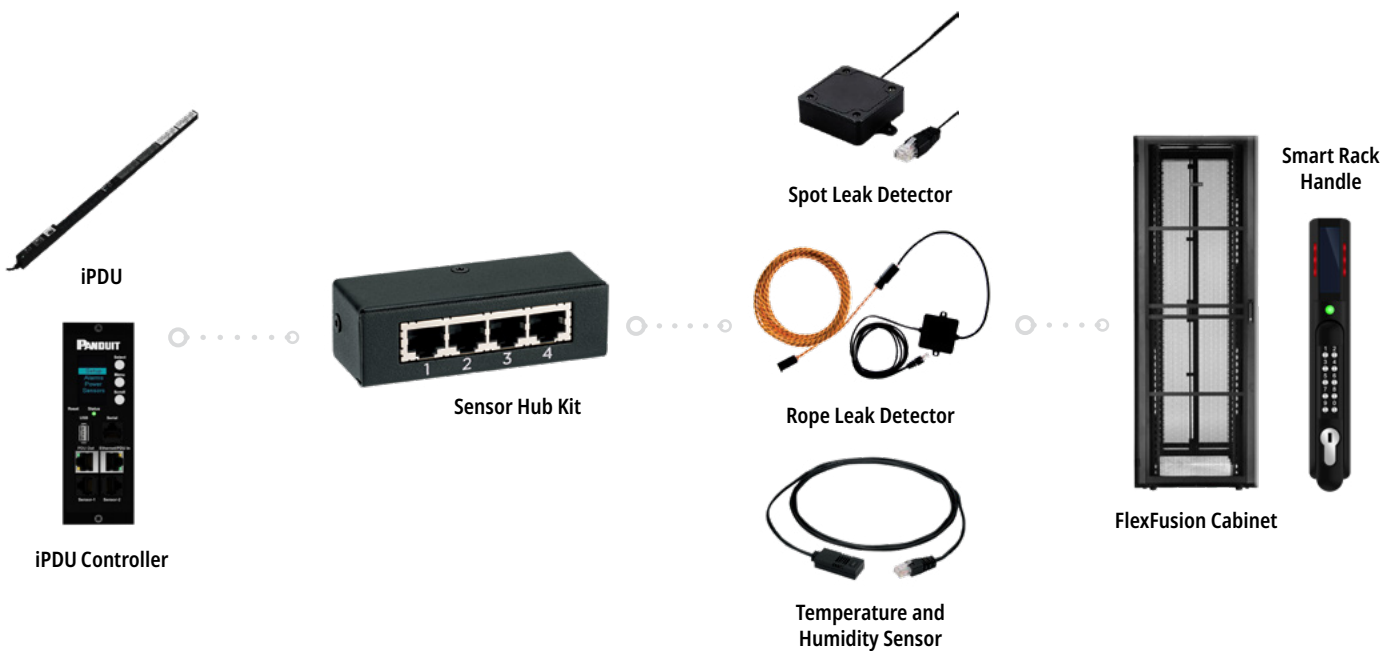
Features

- Real-time temperature, humidity, and leak detection
- Customizable alerts and thresholds
- Easy integration with DCIM software
- Panduit iPDU and UPS firmware self-identification
- Quick connect with RJ45 plug

Smart Rack Handle

Features

- Up to 200 users
- Multifrequency card access
- HID 125 kHz/13.5 MHz, Mifare and iClass
- Dual authentication (keypad version)

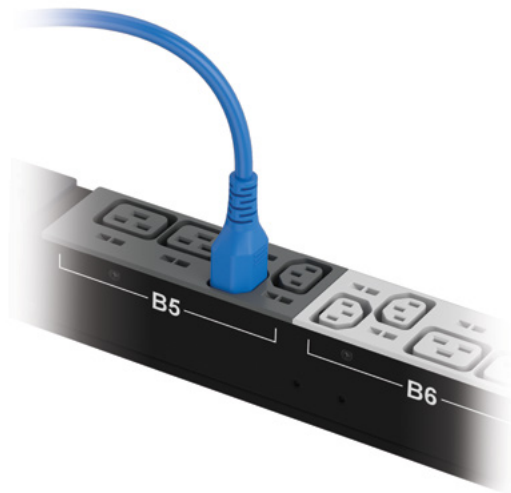


Discover how our environmental sensors and rack security solutions can transform your data center operations.

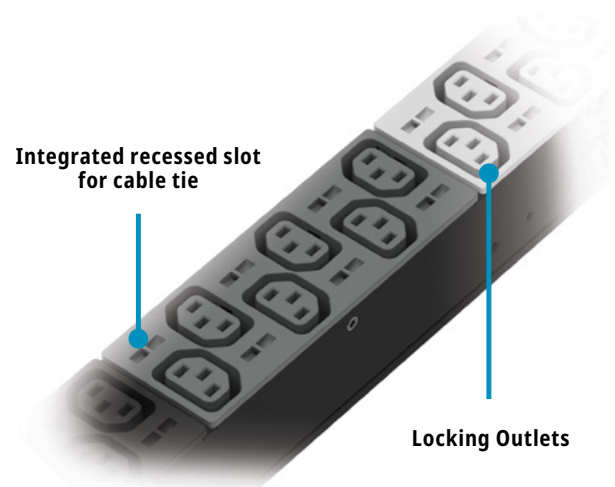
▶ **Environmental & Security Solutions**

Dual-Locking IT Power Cords

Our dual-locking IT power cords are designed to reliably transfer power from the rack PDU to active IT equipment in the data center cabinet or rack. Recognized for their best-in-class, heavy-duty, dual-locking configuration, dual-locking IT power cords establish a secure and stable power supply. These cords are meticulously crafted to minimize management of slack loops and unnecessary clutter, effectively optimizing the organization of your IT racks.



Integrated recessed slot for cable tie



Locking Outlets



LPCB02-X



LPCB03-X



LPCA03-X



LPCA08-X



LPCA06-X



LPCA07-X



LPCA12-X

Scan the QR Code

to view the Power Cords Selector Guide



SiteCommand Utility Software

Elevate PDU Management

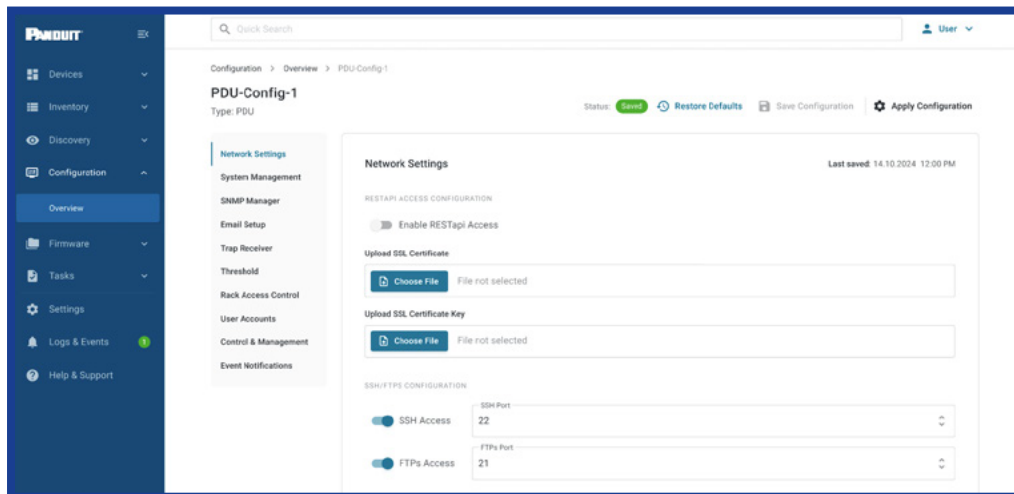
Experience seamless management of our iPDU with Panduit SiteCommand Utility software. Designed for efficiency, this utility tool enables bulk configuration and firmware updates, helping power infrastructures operate at peak performance. This comprehensive software simplifies PDU management, and enhances reliability, making it an essential asset for any organization.

Use Case Scenarios

- **Data Center Operations:** Simplify iPDU onboarding and operation with bulk configuration
- **Edge Sites:** Centrally manage devices across multiple locations
- **Enterprise Networks:** Quick deploy security patches through firmware updates

Benefits

- **Reduced Risk:** Keeps system up-to-date
- **Efficiency Gains:** Streamline configuration processes
- **Enhanced Performance:** Allows for optimal system performance



[Review Our Online Resource Center Here](#)

Product Part Numbers & Specifications

BASIC PDU

| Part Number | Description |
|----------------|---|
| P12B01M | This Panduit G5 Basic PDU features (12) 5-20R outlets. It is a 15 amp, 120 V, single phase PDU with a NEMA 5-15P input plug and a 10 foot (3m) power cord. |
| P12B19M | This Panduit G5 Basic PDU features (12) 5-20R outlets. It is a 20 amp, 120 V, single phase PDU with a NEMA 5-20P input plug and a 10 foot (3m) power cord. |
| P30B06M | This Panduit G5 Basic PDU features (24) C13 and (6) C19 outlets. It is a 32 amp, 230 V, single phase PDU with an IEC 60309 2P+E 6h 32A (IP44) input plug and a 10 foot (3m) power cord. |

METERED INPUT PDU

| Part Number | Description |
|----------------|---|
| P42D06M | This Panduit G5 Monitored Input PDU features (36) C13 and (6) C19 outlets. It is a 32 amp, 230 V, single phase PDU with an IEC 60309 2P+E 6h 32A (IP44) input plug and a 10 foot (3m) power cord. |
| P38D25G | The Panduit G6 Monitored Input PDU features (32) C13 and (6) C19 outlets. It is a 30 amp, 208 V, single phase PDU with a NEMA L6-30P input plug and a 10 foot (3m) power cord. |
| P42D04G | The Panduit G6 Monitored Input PDU features (32) C13 and (6) C19 outlets. It is a 30 amp, 208 V, single phase PDU with a NEMA L6-30P input plug and a 10 foot (3m) power cord. |
| E42D04L | This Panduit EL2P Monitored PDU features (21) C13/C15 and (21) C13/C15/C19/C21 outlets. It is a 32-amp, three-phase PDU with an IEC 60309 3P+N+E 6h 32A (IP44) input plug. |
| E42D06L | This Panduit EL2P Monitored PDU features (21) C13/C15 and (21) C13/C15/C19/C21 outlets. It is a 32-amp, single-phase PDU with an IEC 60309 2P+E 6h 32A (IP44) input plug. |
| E36D06L | This Panduit EL2P Monitored PDU features (18) C13/C15 and (18) C13/C15/C19/C21 outlets. It is a 32-amp, single-phase PDU with an IEC 60309 2P+E 6h 32A (IP44) input plug. |
| E48D31L | This Panduit EL2P Monitored PDU features (24) C13/C15 and (24) C13/C15/C19/C21 outlets. It is a dual-rated 60/63-amp, three-phase PDU with an IEC 60309 3P+N+E 6h 63A/60A (IP44) input plug. |
| E36D25L | This Panduit EL2P Monitored PDU features (18) C13/C15 and (18) C13/C15/C19/C21 outlets. It is a 30-amp, single-phase PDU with a NEMA L6-30P input plug. |
| E36E09L | This Panduit EL2P Monitored Switched PDU features (18) C13/C15 and (18) C13/C15/C19/C21 outlets. It is a 32-amp, three-phase PDU with an IEC 60309 3P+N+E 6h 32A (IP44) input plug. |

MONITORED SWITCH PDU

| Part Number | Description |
|----------------|---|
| P32E06M | This Panduit G5 Monitored Switched PDU features (24) C13 and (8) C19 outlets. It is a Dual Rated 30/32 amp, 240/230V, single phase PDU with IEC 60309 2P+E 6h 30/32A (IP44) input plug and a 10 foot (3m) power cord. |
| P36E09M | This Panduit G5 Monitored Switched PDU features (24) C13 and (8) C19 outlets. It is a Dual Rated 30/32 amp, 240/230V, single phase PDU with IEC 60309 2P+E 6h 30/32A (IP44) input plug and a 10 foot (3m) power cord. |
| P24E01M | This Panduit G5 Monitored Switched PDU features (20) C13 and (4) C19 outlets. It is a 32 amp, 230 V, single phase PDU with an IEC 60309 2P+E 6h 32A (IP44) input plug and a 10 foot (3m) power cord. |

(continued on next page)


Product Part Numbers & Specifications (continued)

MONITORED PER OUTLET PDU

| Part Number | Description |
|----------------|--|
| P36F13M | This Panduit G5 Monitored Per Outlet PDU features (24) C13 and (12) C19 outlets. It is a 32 amp, 400 V, three phase PDU with an IEC 60309 3P+N+E 6h 32A (IP44) input plug and a 10 foot (3m) power cord. |
| P36F12M | This Panduit G5 Monitored Per Outlet PDU features (30) C13 and (6) C19 outlets. It is a 16 amp, 400 V, three phase PDU with an IEC 60309 3P+N+E 6h 16A (IP44) input plug and a 10 foot (3m) power cord. |
| E36F13L | This Panduit EL2P Monitored Per Outlet PDU features (18) C13/C15 and (18) C13/C15/C19/C21 outlets. It is a 32-amp, three-phase PDU with an IEC 60309 3P+N+E 6h 32A (IP44) input plug. |

MONITORED SWITCHED PER OUTLET PDU

| Part Number | Description |
|----------------|--|
| P36G18M | This Panduit G5 Monitored & Switched per Outlet PDU features (30) C13 and (6) C19 outlets. It is a 30 amp, 208 V, single phase PDU with a NEMA L6-30P input plug and a 10 foot (3m) power cord. |
| P24G01G | This Panduit G5 Monitored & Switched per Outlet PDU features (30) C13 and (6) C19 outlets. It is a 30 amp, 208 V, single phase PDU with a NEMA L6-30P input plug and a 10 foot (3m) power cord. |
| E42G20L | This Panduit EL2P Monitored Switched Per Outlet PDU features (21) C13/C15 and (21) C13/C15/C19/C21 outlets. It is a 60-amp, three-phase PDU with an IEC 60309 3P+E 9h 60A (IP44) input plug. |
| E42G05L | This Panduit EL2P Monitored Switched Per Outlet PDU features (21) C13/C15 and (21) C13/C15/C19/C21 outlets. It is a dual-rated 30/32-amp, three-phase PDU with an IEC 60309 3P+N+E 6h 32A/30A (IP44) input plug. |
| E36G18L | This Panduit EL2P Monitored Switched Per Outlet PDU features (18) C13/C15 and (18) C13/C15/C19/C21 outlets. It is a 30-amp, single-phase PDU with a NEMA L6-30P input plug. |
| E48G01L | This Panduit EL2P Monitored Switched Per Outlet PDU features (24) C13/C15 and (24) C13/C15/C19/C21 outlets. It is a dual-rated 60/63-amp, three-phase PDU with an IEC 60309 3P+N+E 6h 63A/60A (IP44) input plug. |
| E42G03L | This Panduit EL2P Monitored Switched Per Outlet PDU features (21) C13/C15 and (21) C13/C15/C19/C21 outlets. It is a dual-rated 30/32-amp, single-phase PDU with an IEC 60309 2P+E 6h 32A/30A (IP44) input plug. |
| E48G04L | This Panduit EL2P Monitored Switched Per Outlet PDU features (24) C13/C15 and (24) C13/C15/C19/C21 outlets. It is a 30-amp, three-phase PDU with a NEMA L22-30P input plug. |
| E42G02L | This Panduit EL2P Monitored Switched Per Outlet PDU features (21) C13/C15 and (21) C13/C15/C19/C21 outlets. It is a 60-amp, single-phase PDU with an IEC 60309 2P+E 6h 60A (IP44) input plug. |
| E36G19L | This Panduit EL2P Monitored Switched Per Outlet PDU features (18) C13/C15 and (18) C13/C15/C19/C21 outlets. It is a 30-amp, three-phase PDU with a NEMA L21-30P input plug. |



We have the knowledge
and experience to help you
make the most of your
infrastructure investment.

panduit.com/pdu



Let's connect

panduit.com/contact-us

PANDUIT[®]

infrastructure for a connected world