

ASUS NUC 13 PRO

The Right Size for Modern Business



ASUS NUC 13 Pro Mini PCs, Kits, and Boards deliver breakthrough performance and connectivity in a 4x4 device for productivity, collaboration, and edge compute. Drive enterprise-class performance with 12-core 13th Gen Intel® Core™ processors, up to 64GB dual-channel memory and massive SSD capacity. Fast and flexible connectivity with Intel® Wi-Fi 6E (Gig+) and dual Thunderbolt™ 4 ports are just a few of the many business-class features ASUS NUC 13 Pro offers. Select NUC 13 Pro SKUs feature Intel vPro® Enterprise for Windows with 13th Gen Intel® Core™ processors, which provides performance, security, stability, and manageability features for managed businesses of all sizes.

Key Selling Points

- Pack the power of a full-size desktop PCs into a form factor small enough to hold in your hand
- Support a variety of uses including kiosks, multiple displays walls, meeting rooms, telehealth, and more.
- Get all the ports and wireless connections expected from a desktop PC—USB, HDMI, Thunderbolt™ technology, 2.5 Gigabit Ethernet, Wi-Fi—in ASUS's industry-leading ultra-small form factor.
- Build on the Intel vPro® Platform for greater manageability, built-in security features, and stability to help lower costs by simplifying IT administration and increasing uptime.

Audience:

- MSPs, resellers and professionals, Forward-thinking early adopters

Target Usages:

- NUC Pro Software Suite featuring Intel Watchdog Utility
- Display emulation



Image A



Image B

ASUS NUC 13 PRO

Mini-PC Specifications

Marketing Name	ASUS NUC 13 Pro Mini-PC	ASUS NUC 13 Pro Mini-PC
Project Code	NUC13ANH-B / NUC13LCH-B	NUC13ANK-B / NUC13LCK-B
Photo	Image A	Image B
ASUS Logo	N/A	N/A
ASUS NUC Logo	N/A	N/A
Color	Black	Black
OS Support	Windows 11 Home 64-bit Windows 11 Pro 64-bit * OS version pre-installed at shipment is based on order SKU	Windows 11 Home 64-bit Windows 11 Pro 64-bit * OS version pre-installed at shipment is based on order SKU
CPU	Intel® Core™ i7-1360P Processor, cTDP 40W Intel® Core™ i5-1340P Processor, cTDP 40W Intel® Core™ i3-1315U Processor, cTDP 20W	Intel® Core™ i7-1360P Processor, cTDP 40W Intel® Core™ i5-1340P Processor, cTDP 40W Intel® Core™ i3-1315U Processor, cTDP 20W
Chipset	Integrated	Integrated
Integrated Graphics	Intel® Iris® Xe Graphics (i5/i7) Intel® UHD Graphics (i3)	Intel® Iris® Xe Graphics (i5/i7) Intel® UHD Graphics (i3)
Discrete Graphics	N/A	N/A
Memory	2 x SO-DIMM, Up to DDR4-3200, 32GB*2	2 x SO-DIMM, Up to DDR4-3200, 32GB*2
Storage	1 x M.2 2280 PCIe Gen4x4, supports 128GB~8TB NVMe™ SSD 1 x 2.5" SATA 6Gb/s, supports 4TB 7~15mm HDD 1 x SATA Power/DATA header for 2.5in SSD/HDD, supports 128GB~2TB SATA drive	1 x M.2 2280 PCIe Gen4x4, supports 128GB~8TB NVMe™ SSD 1 x M.2 2242 PCIe x1, supports 128GB~1TB SATA SSD
Wireless Network	Intel® AX211 (Gig+), Wi-Fi 6E, Bluetooth 5.3	Intel® AX211 (Gig+), Wi-Fi 6E, Bluetooth 5.3
LAN	Intel® Ethernet Controller I226-V, 2.5G	Intel® Ethernet Controller I226-V, 2.5G
Audio	Realtek ALC269	Realtek ALC269
TPM	fTPM or TPM 2.0 chip	fTPM or TPM 2.0 chip
Card Reader	None	None
HDMI CEC	Yes, 2 ports on back panel	Yes, 2 ports on back panel
Front I/O Ports	2 x USB 3.2 Gen2 Type-A 1 x 3.5mm Headset Jack	2 x USB 3.2 Gen2 Type-A 1 x 3.5mm Headset Jack
Back I/O Ports	2 x Thunderbolt 4 Type-C w/ DisplayPort 1.4 1 x USB 3.2 Gen 2 Type-A 1 x USB 2.0 Type-A 2 x HDMI 2.1 (TMDS) 1 x RJ45 LAN 1 x DC-in	2 x Thunderbolt 4 Type-C w/ DisplayPort 1.4 1 x USB 3.2 Gen 2 Type-A 1 x USB 2.0 Type-A 2 x HDMI 2.1 (TMDS) 1 x RJ45 LAN 1 x DC-in
Side I/O Ports	1 x Kensington Lock slot	1 x Kensington Lock slot
Power Supply	Power Adapter Meets DOE Level VI, efficiency >=88% 20VDC, 6.0A, 120W Power Adapter (i7/i5 CPU) 19VDC, 4.74A, 90W Power Adapter (i3 CPU)	Power Adapter Meets DOE Level VI, efficiency >=88% 20VDC, 6.0A, 120W Power Adapter (i7/i5 CPU) 19VDC, 4.74A, 90W Power Adapter (i3 CPU)
Product Dimensions (W x D x H)	"H" 117 x 112 x 54mm	"K" 117 x 112 x 37 mm
Product Weight	~ 590g	~590g
Color Box Dimensions (W x D x H)	192 x 160 x 121 mm	192 x 160 x 104 mm
Packaged Weight	~1.426 kg	~1.363 kg
Operating Temperature	0°C-40°C	0°C-40°C
Storage Temperature	-20°C-40°C	-20°C-40°C
Humidity	0%-92% non-condensing ⁽¹⁾	0%-92% non-condensing ⁽¹⁾
Noise Level (idle mode to full load mode)	23dBA~50dBA	23dBA~50dBA
Accessories	AC Adapter+Power Cord ⁽²⁾ VESA Bracket and Screws M3 Screws for 2.5in Drive Cable Clip Safety/Caution/Regulatory Insert Warranty Card	AC Adapter+Power Cord ⁽²⁾ VESA Bracket and Screws Cable Clip Safety/Caution/Regulatory Insert Warranty Card

⁽¹⁾ Humidity Info detail please check link: [Non-condensing humidity as defined by temperature vs dew point.](#)

⁽²⁾ Power cord included is region specific, and some SKUs do not include the power cord

ASUS NUC 13 PRO

Kit Specifications



Image C



Image D

Marketing Name	ASUS NUC 13 Pro Kit	
Project Code	NUC13ANH-B / NUC13LCH-B	NUC13ANK-B / NUC13LCK-B
Photo	Image C	Image D
ASUS Logo	N/A	N/A
ASUS NUC Logo	N/A	N/A
Color	Black	Black
OS Support	Windows 11 Home 64-bit Windows 11 Pro 64-bit Windows 10 IoT Enterprise 64-bit RedHat Enterprise Linux 9.1 64-bit Ubuntu 20.04/22.04 LTS 64-bit * No OS installed at shipment	Windows 11 Home 64-bit Windows 11 Pro 64-bit Windows 10 IoT Enterprise 64-bit RedHat Enterprise Linux 9.1 64-bit Ubuntu 20.04/22.04 LTS 64-bit * No OS installed at shipment
CPU	Intel® Core™ i7-1370P Processor w/ vPro, cTDP 40W Intel® Core™ i7-1360P Processor, cTDP 40W Intel® Core™ i5-1350P Processor w/ vPro, cTDP 40W Intel® Core™ i5-1340P Processor, cTDP 40W Intel® Core™ i3-1315U Processor, cTDP 20W	Intel® Core™ i7-1370P Processor w/ vPro, cTDP 40W Intel® Core™ i7-1370PE Processor w/ vPro, cTDP 40W Intel® Core™ i7-1360P Processor, cTDP 40W Intel® Core™ i5-1350P Processor w/ vPro, cTDP 40W Intel® Core™ i5-1350PE Processor, cTDP 40W Intel® Core™ i5-1340P Processor, cTDP 40W Intel® Core™ i5-1340PE Processor w/ vPro, cTDP 40W Intel® Core™ i3-1315U Processor, cTDP 20W Intel® Core™ i3-1315UE Processor, cTDP 20W
Chipset	Integrated	Integrated
Integrated Graphics	Intel® Iris® Xe Graphics (i5/i7) Intel® UHD Graphics (i3)	Intel® Iris® Xe Graphics (i5/i7) Intel® UHD Graphics (i3)
Discrete Graphics	N/A	N/A
Memory	2 x SO-DIMM, Up to DDR4-3200, 32GB*2	2 x SO-DIMM, Up to DDR4-3200, 32GB*2
Storage	1 x M.2 2280 PCIe Gen4x4, supports 128GB~8TB NVMe™ SSD 1 x M.2 2242 PCIe x1, supports 128GB~1TB SATA SSD 1 x 2.5" SATA 6Gb/s, supports 4TB 7~15mm HDD	1 x M.2 2280 PCIe Gen4x4, supports 128GB~8TB NVMe™ SSD 1 x M.2 2242 PCIe x1, supports 128GB~1TB SATA SSD
Wireless Network	Intel® AX211 (Gig+), Wi-Fi 6E, Bluetooth 5.3 Intel® vPro® Technology (i7/i5 vPro SKUs only)	Intel® AX211 (Gig+), Wi-Fi 6E, Bluetooth 5.3 Intel® vPro® Technology (i7/i5 vPro SKUs only)
LAN	Intel® Ethernet Controller I226-V/LM, 2.5G ¹	Intel® Ethernet Controller I226-V/LM, 2.5G ¹
Audio	Realtek ALC269	Realtek ALC269
TPM	fTPM or TPM 2.0 chip	fTPM or TPM 2.0 chip
Card Reader	None	None
HDMI CEC	Yes, 2 ports on back panel	Yes, 2 ports on back panel
Front I/O Ports	2 x USB 3.2 Gen2 Type-A 1 x Headset Jack	2 x USB 3.2 Gen2 Type-A 1 x Headset Jack
Back I/O Ports	2 x Thunderbolt 4 Type-C w/ DisplayPort 1.4 1 x USB 3.2 Gen 2 Type-A 1 x USB 2.0 Type-A 2 x HDMI 2.1 (TMDS) 1 x RJ45 LAN 1 x DC-in	2 x Thunderbolt 4 Type-C w/ DisplayPort 1.4 1 x USB 3.2 Gen 2 Type-A 1 x USB 2.0 Type-A 2 x HDMI 2.1 (TMDS) 1 x RJ45 LAN 1 x DC-in
Side I/O Ports	1 x Kensington Lock slot	1 x Kensington Lock slot
Power Supply	Power Adapter Meets DOE Level VI, efficiency >=88% 20VDC, 6.0A, 120W Power Adapter (i7/i5 CPU) 19VDC, 4.74A, 90W Power Adapter (i3 CPU)	Power Adapter Meets DOE Level VI, efficiency >=88% 20VDC, 6.0A, 120W Power Adapter (i7/i5 CPU) 19VDC, 4.74A, 90W Power Adapter (i3 CPU)
Product Dimensions (W x D x H)	"H" 117 x 112 x 54mm	"K" 117 x 112 x 37 mm
Product Weight	~590g	~590g
Color Box Dimensions (W x D x H)	192 x 160 x 121 mm	192 x 160 x 104 mm
Packaged Weight	~1.426 kg	~1.363 kg
Operating Temperature	0°C-40°C	0°C-40°C
Storage Temperature	-20°C-40°C	-20°C-40°C
Humidity	0%-92% non-condensing ²	0%-92% non-condensing ²
Noise Level (idle mode to full load mode)	23dBA~50dBA	23dBA~50dBA
Accessories	AC Adapter+Power Cord ³ VESA Bracket and Screws M3 Screws for 2.5in Drive Cable Clip Safety/Caution/Regulatory Insert Warranty Card	AC Adapter+Power Cord ³ VESA Bracket and Screws Cable Clip Safety/Caution/Regulatory Insert Warranty Card

(1) Intel® Ethernet Controller I226-LM included on vPro enable systems

(2) Humidity Info detail please check link: [Non-condensing humidity as defined by temperature vs dew point](#)

(3) Power cord included is region specific, and some SKUs do not include the power cord

ASUS NUC 13 PRO

Mini-PC Specifications



Image A



Image B

Marketing Name	ASUS NUC 13 Pro Mini-PC	ASUS NUC 13 Pro Mini-PC
Project Code	NUC13ANH-Refresh	NUC13ANK-Refresh
Photo	Image A	Image B
ASUS Logo	N/A	N/A
ASUS NUC Logo	N/A	N/A
Color	Black	Black
OS Support	Windows 11 Home 64-bit Windows 11 Pro 64-bit	Windows 11 Home 64-bit Windows 11 Pro 64-bit
	* OS version pre-installed at shipment is based on order SKU	* OS version pre-installed at shipment is based on order SKU
CPU	Intel® Core™ i5-13420H Processor, cTDP 45W Intel® Core™ i7-13620H Processor, cTDP 45W	Intel® Core™ i5-13420H Processor, cTDP 45W Intel® Core™ i7-13620H Processor, cTDP 45W
Chipset	Integrated	Integrated
Integrated Graphics	Intel® UHD Graphics (i5/i7)	Intel® UHD Graphics (i5/i7)
Discrete Graphics	N/A	N/A
Memory	2 x SO-DIMM, Up to DDR4-3200, 8GB*2	2 x SO-DIMM, Up to DDR4-3200, 8GB*2
Storage	1 x M.2 2280 PCIe Gen4x4, supports 128GB~8TB NVMe™ SSD 1 x 2.5" SATA 6Gb/s, supports 4TB 7~15mm HDD 1 x SATA Power/DATA header for 2.5in SSD/HDD, supports 128GB~2TB SATA drive	1 x M.2 2280 PCIe Gen4x4, supports 128GB~8TB NVMe™ SSD 1 x M.2 2242 PCIe x1, supports 128GB~1TB SATA SSD
Wireless Network	Intel® AX211 (Gig+), Wi-Fi 6E, Bluetooth 5.3	Intel® AX211 (Gig+), Wi-Fi 6E, Bluetooth 5.3
LAN	Intel® Ethernet Controller I226-V, 2.5G	Intel® Ethernet Controller I226-V, 2.5G
Audio	Realtek ALC269	Realtek ALC269
TPM	fTPM or TPM 2.0 chip	fTPM or TPM 2.0 chip
Card Reader	None	None
HDMI CEC	Yes, 2 ports on back panel	Yes, 2 ports on back panel
Front I/O Ports	2 x USB 3.2 Gen2 Type-A 1 x 3.5mm Headset Jack	2 x USB 3.2 Gen2 Type-A 1 x 3.5mm Headset Jack
Back I/O Ports	2 x Thunderbolt 4 Type-C w/ DisplayPort 1.4 1 x USB 3.2 Gen 2 Type-A 1 x USB 2.0 Type-A 2 x HDMI 2.1 (TMDS) 1 x RJ45 LAN 1 x DC-in	2 x Thunderbolt 4 Type-C w/ DisplayPort 1.4 1 x USB 3.2 Gen 2 Type-A 1 x USB 2.0 Type-A 2 x HDMI 2.1 (TMDS) 1 x RJ45 LAN 1 x DC-in
Side I/O Ports	1 x Kensington Lock slot	1 x Kensington Lock slot
Power Supply	20VDC, 6.0A, 120W Power Adapter (i7/i5 CPU) 19VDC, 4.74A, 90W Power Adapter (i3 CPU)	20VDC, 6.0A, 120W Power Adapter (i7/i5 CPU) 19VDC, 4.74A, 90W Power Adapter (i3 CPU)
Product Dimensions (W x D x H)	"H" 117 x 112 x 54mm	"K" 117 x 112 x 37 mm
Product Weight	~ 590g	~590g
Color Box Dimensions (W x D x H)	192 x 160 x 121 mm	192 x 160 x 104 mm
Packaged Weight	~1.426 kg	~1.363 kg
Operating Temperature	0°C-40°C	0°C-40°C
Storage Temperature	-20°C-40°C	-20°C-40°C
Humidity	0%-92% non-condensing ¹	0%-92% non-condensing ¹
Accessories	AC Adapter+Power Cord ² VESA Bracket and Screws M3 Screws for 2.5in Drive Cable Clip Safety/Caution/Regulatory Insert Warranty Card	AC Adapter+Power Cord ² VESA Bracket and Screws Cable Clip Safety/Caution/Regulatory Insert Warranty Card

⁽¹⁾ Humidity Info detail please check link: [Non-condensing humidity as defined by temperature vs dew point.](#)

⁽²⁾ Power cord included is region specific, and some SKUs do not include the power cord



Image C



Image D

ASUS NUC 13 PRO

Kit Specifications

Marketing Name	ASUS NUC 13 Pro Kit	ASUS NUC 13 Pro Kit
Project Code	NUC13ANH-Refresh	NUC13ANK-Refresh
Photo	Image C	Image D
ASUS Logo	N/A	N/A
ASUS NUC Logo	N/A	N/A
Color	Black	Black
OS Support	Windows 11 Home 64-bit Windows 11 Pro 64-bit Windows 10 IoT Enterprise 64-bit RedHat Enterprise Linux 9.1 64-bit Ubuntu 20.04/22.04 LTS 64-bit * No OS installed at shipment	Windows 11 Home 64-bit Windows 11 Pro 64-bit Windows 10 IoT Enterprise 64-bit RedHat Enterprise Linux 9.1 64-bit Ubuntu 20.04/22.04 LTS 64-bit * No OS installed at shipment
CPU	Intel® Core™ i5-13420H Processor, cTDP 45W Intel® Core™ i7-13620H Processor, cTDP 45W	Intel® Core™ i5-13420H Processor, cTDP 45W Intel® Core™ i7-13620H Processor, cTDP 45W
Chipset	Integrated	Integrated
Integrated Graphics	Intel® Iris® Xe Graphics (i5/i7)	Intel® Iris® Xe Graphics (i5/i7)
Discrete Graphics	N/A	N/A
Memory	2 x SO-DIMM, Up to DDR4-3200, 32GB*2	2 x SO-DIMM, Up to DDR4-3200, 32GB*2
Storage	1 x M.2 2280 PCIe Gen4x4, supports 128GB~8TB NVMe™ SSD 1 x M.2 2242 PCIe x1, supports 128GB~1TB SATA SSD 1 x 2.5" SATA 6Gb/s, supports 4TB 7~15mm HDD	1 x M.2 2280 PCIe Gen4x4, supports 128GB~4TB NVMe™ SSD or higher 1 x M.2 2242 PCIe x1, supports 128GB~4TB SATA SSD or higher
Wireless Network	Intel® AX211 (Gig+), Wi-Fi 6E, Bluetooth 5.3	Intel® AX211 (Gig+), Wi-Fi 6E, Bluetooth 5.3
LAN	Intel® Ethernet Controller I226-V, 2.5G	Intel® Ethernet Controller I226-V, 2.5G
Audio	Realtek ALC269	Realtek ALC269
TPM	fTPM or TPM 2.0 chip	fTPM or TPM 2.0 chip
Card Reader	None	None
HDMI CEC	Yes, 2 ports on back panel	Yes, 2 ports on back panel
Front I/O Ports	2 x USB 3.2 Gen2 Type-A 1 x Headset Jack	2 x USB 3.2 Gen2 Type-A 1 x Headset Jack
Back I/O Ports	2 x Thunderbolt 4 Type-C w/ DisplayPort 1.4 1 x USB 3.2 Gen 2 Type-A 1 x USB 2.0 Type-A 2 x HDMI 2.1 (TMDS) 1 x RJ45 LAN 1 x DC-in	2 x Thunderbolt 4 Type-C w/ DisplayPort 1.4 1 x USB 3.2 Gen 2 Type-A 1 x USB 2.0 Type-A 2 x HDMI 2.1 (TMDS) 1 x RJ45 LAN 1 x DC-in
Side I/O Ports	1 x Kensington Lock slot	1 x Kensington Lock slot
Power Supply	20VDC, 6.0A, 120W Power Adapter (i7/i5 CPU)	20VDC, 6.0A, 120W Power Adapter (i7/i5 CPU) 19VDC, 4.74A, 90W Power Adapter (i3 CPU)
Product Dimensions (W x D x H)	"H" 117 x 112 x 54mm	"K" 117 x 112 x 37 mm
Product Weight	~ 590g	~590g
Color Box Dimensions (W x D x H)	192 x 160 x 121 mm	192 x 160 x 104 mm
Packaged Weight	~1.426 kg	~1.363 kg
Operating Temperature	0°C-40°C	0°C-40°C
Storage Temperature	-20°C-40°C	-20°C-40°C
Humidity	0%-92% non-condensing ⁽¹⁾	0%-92% non-condensing ⁽¹⁾
Accessories	AC Adapter+Power Cord ⁽²⁾ VESA Bracket and Screws M3 Screws for 2.5in Drive Cable Clip Safety/Caution/Regulatory Insert Warranty Card	AC Adapter+Power Cord ⁽²⁾ VESA Bracket and Screws Cable Clip Safety/Caution/Regulatory Insert Warranty Card

⁽¹⁾ Intel® Ethernet Controller I226-LM included on vPro enable systems

⁽²⁾ Humidity Info detail please check link: [Non-condensing humidity as defined by temperature vs dew point](#)

⁽³⁾ Power cord included is region specific, and some SKUs do not include the power cord



Image E

ASUS NUC 13 PRO

Board Specifications

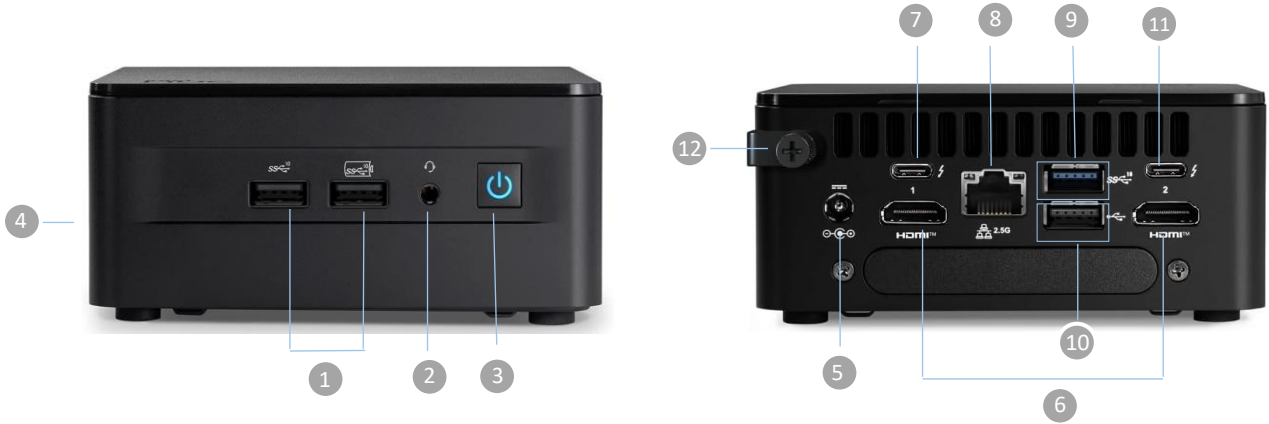
Marketing Name	ASUS NUC 13 Pro Board
Project Code	NUC13ANB-M / NUC13LCB-M
Photo	Image E
ASUS Logo	N/A
ASUS NUC Logo	N/A
Color	N/A
OS Support	Windows 11 Home 64-bit Windows 11 Pro 64-bit Windows 10 IoT Enterprise 64-bit RedHat Enterprise Linux 9.1 64-bit Ubuntu 20.04/22.04 LTS 64-bit * No OS installed at shipment
CPU	Intel® Core™ i7-1370PE Processor w/ vPro, cTDP 40W Intel® Core™ i5-1350P Processor w/ vPro, cTDP 40W Intel® Core™ i5-1350PE Processor w/ vPro, cTDP 40W Intel® Core™ i5-1340P Processor, cTDP 40W Intel® Core™ i5-1340PE Processor, cTDP 40W Intel® Core™ i3-1315U Processor, cTDP 20W Intel® Core™ i3-1315UE Processor, cTDP 20W
Chipset	Integrated
Graphics	Intel® Iris® Xe Graphics (i5/i7) Intel® UHD Graphics (i3)
Memory	2 x SO-DIMM, Up to DDR4-3200, 32GB*2
Storage	1 x M.2 2280 PCIe Gen4x4, supports 128GB~8TB NVMe SSD 1 x M.2 2242 PCIe x1, supports 128GB~1TB SATA SSD 1 x SATA Power/DATA header for 2.5in SSD/HDD, supports 128GB~2TB SATA drive
Wireless Network	No Wireless Card Installed
LAN	Intel® Ethernet Controller I226-V/LM, 2.5G ¹
Audio	Realtek ALC269
TPM	fTPM or TPM 2.0 chip
Card Reader	None
HDMI CEC	Yes, 2 ports on back panel
Front I/O Ports	2 x USB 3.2 Gen2 Type-A 1 x 3.5mm Headset Jack
Back I/O Ports	2 x Thunderbolt 4 Type-C w/ DisplayPort 1.4 1 x USB 3.2 Gen 2 Type-A 1 x USB 2.0 Type-A 2 x HDMI 2.1 (TMDS) 1 x RJ45 LAN 1 x DC-in
Side I/O Ports	N/A
Power Supply	N/A
Operating Temp	0 to 50°C
Storage Temp	-20 to 40°C
Humidity	0%-92% non-condensing ²
Product Dimensions (W x D x H)	110mm x 102mm x 28mm
Product Weights	~225g
Color Box Dimensions (W x D x H)	228 x 151 x 128mm
Packaged Weight	~1.5kg
Accessories	Warranty Card Safety/Caution/Regulatory Insert

⁽¹⁾ Intel® Ethernet Controller I226-LM included on vPro enable systems

⁽²⁾ Humidity Info detail please check link: [Non-condensing humidity as defined by temperature vs dew point](#)

ASUS NUC 13 PRO

Model NUC13ANH-B / NUC13LCH-B (Tall) Connections



- | | | |
|-----------------------------------|------------------------------|-------------------------------|
| 1 2 x USB 3.2 Gen2 Type-A | 5 1 x DC Input | 9 1 x USB 3.2 Gen 2, Type-A |
| 2 1 x 3.5mm Headset Jack | 6 2 x HDMI 2.1 (TMDS) | 10 1 x USB 2.0, Type-A |
| 3 1 x Power Bottom | 7 1 x Thunderbolt 4 Type-C w | 11 1 x Thunderbolt 4 Type-C w |
| 4 1 x Kensington Lock (Side Port) | 8 1 x 2.5Gb Ethernet | 12 Cable Locking Arm |

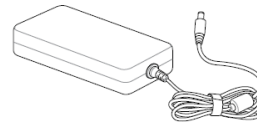
Model NUC13ANK-B / NUC13LCK-B (Slim) Connections



- | | | |
|-----------------------------------|------------------------------|-------------------------------|
| 1 2 x USB 3.2 Gen2 Type-A | 5 1 x DC Input | 9 1 x USB 3.2 Gen 2, Type-A |
| 2 1 x 3.5mm Headset Jack | 6 2 x HDMI 2.1 (TMDS) | 10 1 x USB 2.0, Type-A |
| 3 1 x Power Bottom | 7 1 x Thunderbolt 4 Type-C w | 11 1 x Thunderbolt 4 Type-C w |
| 4 1 x Kensington Lock (Side Port) | 8 1 x 2.5Gb Ethernet | 12 Cable Locking Arm |

ASUS NUC 13 PRO

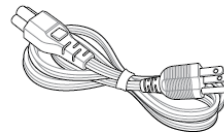
What's in the box



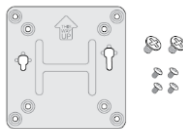
90 / 120 W power supply



Inserts



Power Cord*



VESA bracket and
Screws

NOTE:

- The most up-to-date and accurate product specifications are available on www.asus.com for download.
- Product and accessory images are for illustrative purposes only. The actual appearance and specifications may vary depending on the model.
- *The bundled power adapter may vary depending on the model and the country (or region) of sale.
- Some bundled accessories may vary depending on the model. For details on these accessories, refer to their respective user manuals.
- If the device or its components fail or malfunction during normal and proper use within the warranty period, bring the warranty card to the ASUS Service Center for replacement of the defective components.