



JLAB
FLOW
BUNDLE

We love that you are rocking JLab!
We take pride in our products and fully stand behind them.



YOUR WARRANTY

All warranty claims are subject to JLab authorization and at our sole discretion. Retain your proof of purchase to ensure warranty coverage.



CONTACT US

Reach out to us at support@jlab.com or visit jlab.com/contact

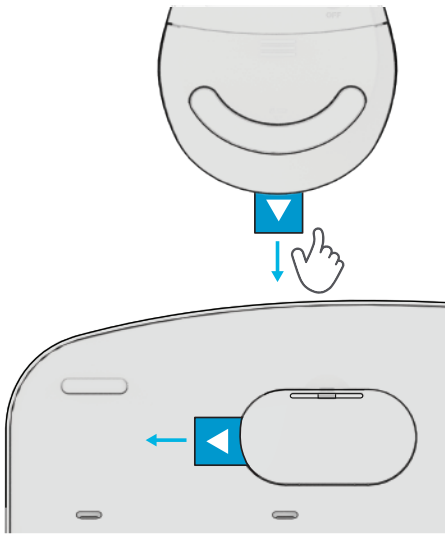
REGISTER TODAY

jlab.com/register

Product updates | How-to tips
FAQs & more

CONNECT WITH DONGLE

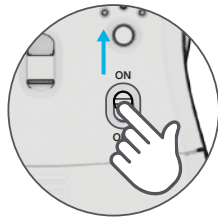
- 1 Remove pull tabs, batteries already installed in both devices.



- 2

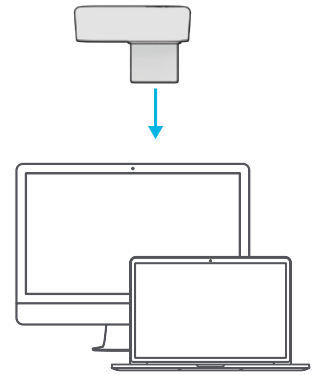


Switch both devices on



- 3

Install 2.4G USB dongle



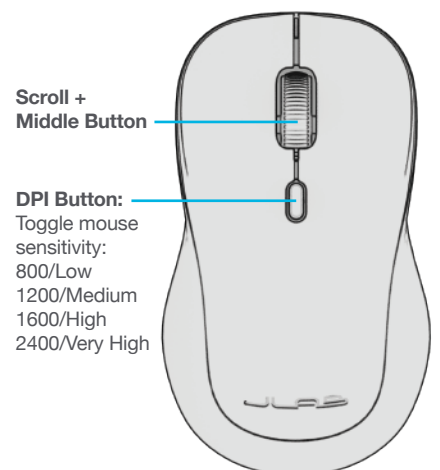
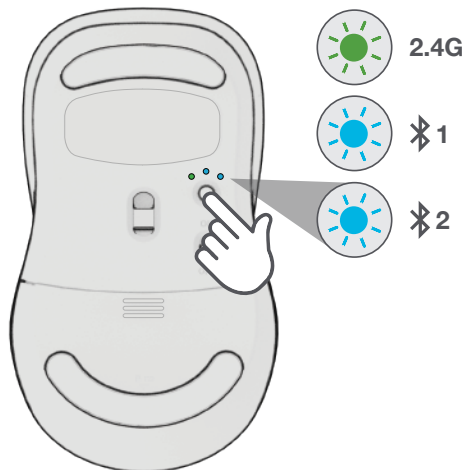
CONNECT MOUSE WITH BLUETOOTH

- 1 **SWITCH CONNECTION:**

Quick press button
(Light switches to associated connection)

- 2 **PAIRING**

Press and hold button to enter pairing mode
Select "Flow Mouse" in device settings

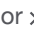



Scroll + Middle Button



DPI Button:
Toggle mouse sensitivity:
800/Low
1200/Medium
1600/High
2400/Very High

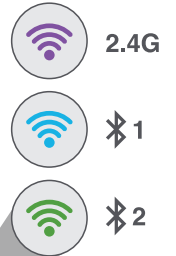
CONNECT KEYBOARD WITH BLUETOOTH

1 SWITCH CONNECTION:

Quick press Fn +  1 or  2
(Light switches to associated connection color)

2 PAIRING

Press hold Fn +  1 or  2 to enter Pairing Mode (Blinking light)
Select "Flow Keys" in device settings



KEYS / CONTROLS

Fn + F1-F12:
Shortcut keys (see Shortcut Keys list)

Custom Keys
Set commands using desktop app

Fn + 1 / 2 / 3:
Quick connection switch

Fn + Q / W / E:
Switch to
Mac / Android /
Windows
keyboard layout



MEDIA DIAL
Vol +/- : Rotate
Play/Pause:
Single press
Track Forward:
Double press
Track Back:
Press and hold

Fn + Right Shift:
Lock / Unlock Fn key
(See Shortcut Keys)

SHORTCUT KEYS

Fn +	MAC	PC	Android
Esc	N/A	Homepage	Homepage
F1	Brightness -	Brightness -	Brightness -
F2	Brightness +	Brightness +	Brightness +
F3	Task Control	Task Control	N/A
F4	Show Applications	Notification Center	N/A
F5	Search	Search	Search
F6	Desktop	Desktop	N/A
F7	Track Back	Track Back	Track Back
F8	Play/Pause	Play/Pause	Play/Pause
F9	Track Forward	Track Forward	Track Forward
F10	Mute	Mute	Mute
F11	Screenshot	Screenshot	Screenshot
F12	Dashboard	Calculator	N/A
Delete	N/A	Screen lock	Screen lock

TROUBLESHOOTING

- If your device is not connecting to Bluetooth, forget the Flow Keys or Flow Mouse in your device settings. Turn device off and on. Press and hold for bluetooth connection until blinking blue light indicates pairing mode. Reenter your device settings to re-pair.
- If the USB dongle is not registering keyboard:
 1. Remove dongle
 2. Press Fn + 1 to enter 2.4G connection
 3. Press + hold CONNECT button until green light blinks quickly
 4. Plug dongle back in
- If the USB dongle is not registering mouse:
 1. Remove dongle
 2. Quick press Connect button until LED blinks green to indicate 2.4G mode
 3. Press and hold Connect button until green light blinks quickly
 4. Plug dongle back in



[Shop products](#) | [Product alerts](#) | [Burn-in your headphones](#)

JLab Audio + Burn-in Tool

