



Cleaning Solutions Guide





Professional Performance, Every Day



For almost 70 years, Betco® has created value through development of high-performing products and programs with proven success. Our customers have chosen Betco for decades, leveraging our expertise in providing powerful, reliable performance in the commercial cleaning industry.

A family-owned business, Betco has a deeply rooted entrepreneurial passion for developing the most dependable processes in the industry. With countless high-achieving products coupled with quality training and support, there's a reason we're our customers' preferred choice.



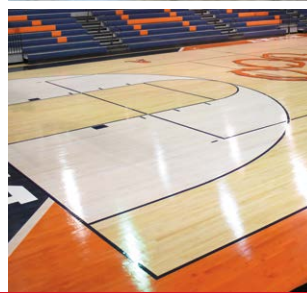
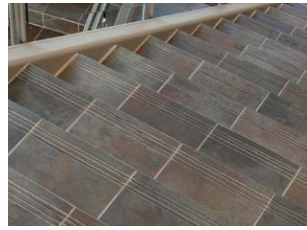
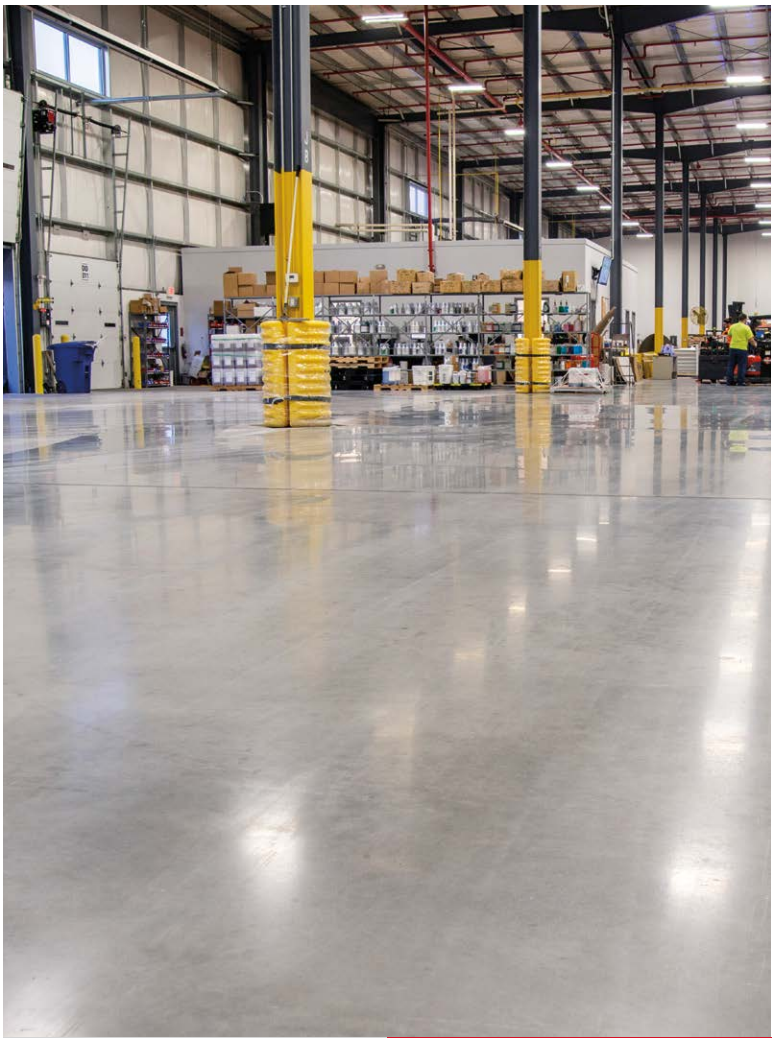


What Do You Get When You Choose Betco?

- National leading brand quality with consistency and powerful performance
- Consultation-based cleaning solutions — turn-key programs that offer value and enhance facilities through right-size solutions
- Best-in-class on-demand training, education, and technology that reaches beyond the product

Contents

| | |
|--------------------------------------|---------|
| <i>Floor Care</i> | 4 - 6 |
| <i>General Cleaning</i> | 7 - 29 |
| <i>Food Service / Warewash</i> | 30 - 37 |
| <i>Laundry</i> | 38 - 42 |
| <i>Dilution Control</i> | 43 - 47 |
| <i>Hand Hygiene</i> | 48 - 52 |
| <i>Equipment</i> | 53 - 59 |
| <i>Product Index</i> | 60 - 64 |



Improve the appearance of any substrate throughout each step in the life cycle of floor care

Innovative solutions, equipment, and procedures combine to boost productivity and save labor

High-performing products protect the flooring investment and reduce costly restoration



Floor Care Solutions

The Leading Choice in Floor Care

From resilient tile to carpets, concrete to wood sports floors, and even grouted tile or stone, we have the right solution for every floor, whether you have time constraints for maintenance or want the optimal appearance level. With free best-in-class training, it's never been easier or more affordable to put your best floor forward with a customized program.



Betco® Floor Finish Overview

| MAINTENANCE FREQUENCY | GOOD | BETTER | | BEST |
|--|--|--|--|---|
| Low to Medium Maintenance Burnishing <i>LESS</i> than 3x per week | Glare® <ul style="list-style-type: none"> Durable High gloss Easy to use Low cost | Hard As Nails® <ul style="list-style-type: none"> Superior wear Resists dirt embedment Resists scuffing Easy to use | Finish 101® <ul style="list-style-type: none"> Low cost build Superior wear Low maintenance | Untouchable® <ul style="list-style-type: none"> Superior wear Resists dirt embedment Exceptional BHMR High build |
| Medium to High Maintenance Burnishing <i>MORE</i> than 3x per week | Photon Max™ <ul style="list-style-type: none"> Excellent "off the mop" gloss Exceptional burnish response Superior Black Heel Mark Resistance (BHMR) | Hi-Tech® <ul style="list-style-type: none"> Excellent wet look gloss Exceptional burnish response Superior flexibility for alternate substrates Excellent build | Hybrid® <ul style="list-style-type: none"> High build / high wet look gloss Exceptional dirt embedment Superior detergent resistance Industry's most versatile finish | |

Specialty Functional Coatings

| SPECIALTY | PRODUCT |
|-------------------------|--|
| GREEN CERTIFIED | Green Earth® Floor Finish Medium to High Maintenance |
| MAX CURE - 6 COATS/HOUR | Betco® Express Max Cure - Superior BHMR |
| HIGH SOLIDS TECHNOLOGY | Betco® Best LM Medium to High Maintenance |
| LOW GLOSS FORMULA | Rescue TruMatte Low Gloss Formula |

| SPECIALTY | PRODUCT |
|---------------------|--|
| STATIC DISSIPATIVE | Insulator™ Static Dissipative Floor Finish |
| ECONOMICAL SEALER | Floor Sealer Economical Floor Sealer |
| CEMENTITIOUS SEALER | Sure Cure™ Urethane Fortified / Cementitious |

FLOOR FINISHES

Hybrid®

Industry's Most Versatile Floor Finish

3,000 sq. ft. per gallon

| Item # | Size |
|----------|-------------------------|
| 66059-00 | 2 - 1.25 Gal. Quickcoat |
| 66004-00 | 4 - 1 Gal. Bottles |
| 660B5-00 | 5 Gal. Bag in Box |
| 66055-00 | 55 Gal. Drum |



Versatile extended wear formula provides long lasting shine.

- Extended wear formula
- Versatile, fits low to frequent maintenance applications
- Superior wear resistance for heavy traffic applications
- Use on all types of resilient flooring

Hard As Nails®

Black Mark Resistant Metal Interlocked Floor Finish

3,000 sq. ft. per gallon

| Item # | Size |
|----------|-------------------------|
| 65959-00 | 2 - 1.25 Gal. Quickcoat |
| 65904-00 | 4 - 1 Gal. Bottles |
| 659B5-00 | 5 Gal. Bag in Box |
| 65955-00 | 55 Gal. Drum |



Long-wearing hard film formula requires less maintenance.

- Superior wearing, non-scuffing
- Self-leveling, self-sealing
- Resists dirt embedment
- Use on all types of resilient flooring

Betco Express® with SRT™

Fast Drying • Fast Curing Floor Finish • Max Cure™ Technology

5,000 sq. ft. per gallon

| Item # | Size |
|----------|-------------------------|
| 65859-00 | 2 - 1.25 Gal. Quickcoat |
| 65804-00 | 4 - 1 Gal. Bottles |
| 658B5-00 | 5 Gal. Bag in Box |
| 65855-00 | 55 Gal. Drum |



Fast dry/cure formula allows up to 6 coats in an hour.

- Coats dry in 10-15 minutes
- Extremely low odor
- Superior black heel mark resistance
- Low to medium maintenance, can be burnished between coats
- Max-Cure Technology™ allows for efficient application

FLOOR FINISHES

Untouchable® with SRT™

Black Mark Resistant Metal Interlocked Floor Finish

3,000 sq. ft. per gallon



Low maintenance floor finish with Scuff Resistant Technology™.

- Superior black heel mark resistance
- High gloss with minimal burnishing
- Self-sealing
- Extremely low odor
- Superior floor protection

| Item # | Size |
|----------|-------------------------|
| 60659-00 | 2 - 1.25 Gal. Quickcoat |
| 60604-00 | 4 - 1 Gal. Bottles |
| 606B5-00 | 5 Gal. Bag in Box |
| 60655-00 | 55 Gal. Drum |

Hi-Tech®

Metal Interlocked Floor Finish

3,000 sq. ft. per gallon



Excellent wet-look shine after burnishing.

- Best product for synthetic rubber floors
- Outstanding performance when paired with high-speed maintenance program
- Self-leveling and self-sealing
- For use on all types of resilient flooring

| Item # | Size |
|----------|--------------------|
| 61004-00 | 4 - 1 Gal. Bottles |
| 610B5-00 | 5 Gal. Bag in Box |
| 61055-00 | 55 Gal. Drum |

BetcoBest® LM High Build Floor Finish

High Build Floor Finish with MMT/50™ Technology

2,500 sq. ft. per gallon



Patented MMT/50™ formula combines high solid content and low viscosity for fewer coats.

- Fewer coats reduce labor
- Maintains high gloss with minimal burnishing
- Extended wear formula for high traffic applications
- Built-in application indicator makes training easy
- For use on all types of resilient flooring

| Item # | Size |
|----------|-------------------------|
| 64459-00 | 2 - 1.25 Gal. Quickcoat |
| 64404-00 | 4 - 1 Gal. Bottles |
| 64405-00 | 5 Gal. Pail |
| 64455-00 | 55 Gal. Drum |

Glare®

Metal Interlocked Acrylic Polymer Floor Finish

3,000 sq. ft. per gallon



Extended wear, extremely high gloss formula requires less burnishing.

- Durable extended wear provides superior protection
- Black mark and detergent resistant
- Self-leveling, excellent flow for easy application with little to no mop drag
- For use on all types of resilient flooring

| Item # | Size |
|----------|--------------------|
| 60504-00 | 4 - 1 Gal. Bottles |
| 605B5-00 | 5 Gal. Bag in Box |
| 60555-00 | 55 Gal. Drum |

Finish 101™

Acrylic Polymer Floor Finish

3,000 sq. ft. per gallon



Efficient build with fewer coats reduces labor.

- Optimal value and performance
- Designed for low maintenance with minimal burnishing
- Deep gloss with bright, clear appearance
- Durable with higher cross link density
- For use on all types of resilient flooring

| Item # | Size |
|----------|--------------------|
| 69604-00 | 4 - 1 Gal. Bottles |
| 696B5-00 | 5 Gal. Bag in Box |
| 69655-00 | 55 Gal. Drum |

Photon™ Max with SRT™

High Gloss Remarkable Response Floor Finish

3,000 sq. ft. per gallon



Dramatic gloss response with frequent maintenance.

- Scuff Resistant Technology™ provides superior black heel mark resistance
- Exceptional response to propane, electric, or battery-operated equipment
- Excellent "off the mop" gloss
- Superior soil resistance

| Item # | Size |
|----------|--------------------|
| 63204-00 | 4 - 1 Gal. Bottles |
| 632B5-00 | 5 Gal. Bag in Box |
| 63255-00 | 55 Gal. Drum |

Insulator™

Static Dissipative Floor Finish

3,000 sq. ft. per gallon



Dissipative Polymer Technology designed for conductive and dissipative floor care programs.

- Meets ASTM F 150 for static control flooring
- Meets Mil-STD-3010B for electrostatic decay
- Meets ANSI/ESD STM97.2 for voltage in combination with a person through a floor system
- Low maintenance/high gloss

| Item # | Size |
|----------|--------------------|
| 63804-00 | 4 - 1 Gal. Bottles |
| 63855-00 | 55 Gal. Drum |

FLOOR FINISHES / SEALERS / QUICKCOAT® APPLICATOR

Rescue Gloss

LVT / Multi-Surface Floor Finish

2,000 - 3,000 sq. ft. per gallon



Protects and extends lifespan of low maintenance floors.

- Designed specifically for low and no maintenance floors
- Best adhesion in class
- Low maintenance, durable formula
- For use on LVT and most other flooring types

| Item # | Size |
|-----------|--------------------|
| 168104-00 | 4 - 1 Gal. Bottles |
| 1681B5-00 | 5 Gal. Bag in Box |

Rescue TruMatte

LVT / Multi-Surface Floor Finish

2,000 - 3,000 sq. ft. per gallon



Protects and extends lifespan of low maintenance floors.

- Best adhesion in its class
- TruMatte technology provides natural look
- Low maintenance, durable formula
- For use on LVT and most other flooring types

| Item # | Size |
|-----------|--------------------|
| 168204-00 | 4 - 1 Gal. Bottles |

Green Earth® Floor Finish

Non-Zinc Floor Finish and Sealer

3,000 sq. ft. per gallon



Versatile extended wear formula provides long lasting shine.

- Extended wear formula
- Versatile, fits low to frequent maintenance applications
- Superior wear resistance for heavy traffic areas

| Item # | Size |
|----------|-------------------|
| 542B5-00 | 5 Gal. Bag in Box |
| 54255-00 | 55 Gal. Drum |

Floor Sealer

Metal Interlocked Acrylic Polymer Floor Sealer

2,000 sq. ft. per gallon



Provides durable uniform base to protect floor finishes.

- Compatible with all water-based finishes or waxes
- High gloss enhances the appearance of the finish
- Acrylic polymer provides long-lasting, durable protection
- Perfect for providing a smooth surface on worn and damaged tiles
- For use on all types of resilient flooring

| Item # | Size |
|----------|--------------------|
| 60704-00 | 4 - 1 Gal. Bottles |
| 607B5-00 | 5 Gal. Bag in Box |
| 60755-00 | 55 Gal. Drum |

Sure Cure™

Acrylic / Urethane Sealer

2,000 sq. ft. per gallon



Fortified waterbased urethane formula.

- Adheres to a variety of hard surface floors
- Long-lasting protection and abrasion resistance
- Labor saving, high solids require fewer coats
- For use on concrete, resilient flooring, and stone

| Item # | Size |
|----------|--------------------|
| 60904-00 | 4 - 1 Gal. Bottles |
| 609B5-00 | 5 Gal. Bag in Box |
| 60955-00 | 55 Gal. Drum |

QuickCoat®

Finish Application System

| Item # | Size |
|----------|----------------|
| 91904-00 | 1 - Applicator |



Enhance productivity as much as 50%.

- Eliminates messy mops and buckets
- Reduced product waste
- Ergonomic design reduces fatigue
- For use on all types of resilient flooring

FLOOR STRIPPERS

Extreme®

High Power • Fast Acting • Low Odor • No-Rinse Floor Stripper

Concentrate 1:5



Penetrates and removes multiple coats with minimum labor.

- Rinse free, has lower pH and requires no neutralization
- Extremely powerful
- Unlocks chemical bonds of acrylic and urethane floor finishes for efficient stripping
- Use on all types of resilient flooring

| Item # | Size |
|----------|--------------------|
| 18404-00 | 4 - 1 Gal. Bottles |
| 184B5-00 | 5 Gal. Bag in Box |
| 18455-00 | 55 Gal. Drum |



FLOOR STRIPPERS

Extreme® Ultra

Ultra Concentrated • Low Odor Floor Stripper

Concentrate 1:20



Powerful acting formula uses less product and works quickly to lower overall costs.

- Ultra-concentrated, less packaging to dispose
- Low odor, reduces unpleasant and obnoxious stripping odors
- Rinse free, requires no neutralization or flood rinsing
- For use on all types of resilient flooring

| Item # | Size |
|----------|-----------------------|
| 19412-00 | 12 - 32 oz. Bottles |
| 19447-00 | 4 - 2 Liter FastDraw® |
| 194B5-00 | 5 Gal. Bag in Box |

Emulsinator

Aggressive No-Rinse Stripper

Concentrate 1:10



Quickly removes many layers of floor finish in less time with less effort and no rinsing.

- Powerful formula cuts through layers of old finish in minutes
- Rinse free, no alkaline residue
- Low foaming

| Item # | Size |
|----------|---------------------|
| 15104-00 | 14 - 1 Gal. Bottles |
| 151B5-00 | 5 Gal. Bag in Box |

Ax-It® Plus

Very Aggressive No-Rinse Stripper

Concentrate 1:10



Powerful formula cuts through layers of old finish in minutes.

- Low foaming
- Rinse free, no alkaline residue
- Use on all types of resilient flooring

| Item # | Size |
|----------|--------------------|
| 15404-00 | 4 - 1 Gal. Bottles |
| 154B5-00 | 5 Gal. Bag in Box |
| 15455-00 | 55 Gal. Drum |

Unlock™

No-Rinse Floor Stripper

Concentrate 1:5



Penetrates and removes multiple coats quickly with minimum labor.

- Powerful stripping action
- Energy saving formula works with cold water
- Pleasant to use, no harsh ammonia or solvent odors
- Low foaming
- For use on most types of resilient flooring

| Item # | Size |
|----------|--------------------|
| 88804-00 | 4 - 1 Gal. Bottles |
| 888B5-00 | 5 Gal. Bag in Box |
| 88855-00 | 55 Gal. Drum |

Geraldine®

Non-ammoniated Wax and Finish Stripper

Concentrate 1:10



Unlocks molecular structure of waterbased finishes and sealers.

- Powerful stripping action
- Pleasant to use, no harsh ammonia or solvent odors
- Extended suspension of emulsified particles eliminates costly restriping
- For use on all types of resilient flooring

| Item # | Size |
|----------|-------------------|
| 104B5-00 | 5 Gal. Bag in Box |
| 10455-00 | 55 Gal. Drum |

Green Earth® Floor Stripper

Non-Butyl • Non-Ammoniated Floor Stripper

Concentrate 1:5



Specially formulated to remove Green Earth® and other conventional floor finishes.

- Strips effectively without the use of butyl and ammonia
- Rinse free formula, low foaming
- No added fragrance or dyes

| Item # | Size |
|----------|--------------------|
| 54104-00 | 4 - 1 Gal. Bottles |
| 541B5-00 | 5 Gal. Bag in Box |
| 54155-00 | 55 Gal. Drum |

Ax-It®

Baseboard Stripper

Ready-To-Use Aerosol



Fast-acting gel dissolves soil and finish build-up.

- Cleans and strips where a floor machine cannot reach
- Convenient and easy-to-use aerosol
- Rinse free formula leaves no alkaline residue

| Item # | Size |
|----------|-------------------|
| 09923-00 | 12 - Aerosol Cans |

FLOOR STRIPPERS / MAINTENANCE

Recover LVT / Multi-Surface Stripper

Concentrate 1:10



Removes multiple coats of metal interlock acrylic floor finish.

- Safe for LVT, sheet vinyl, linoleum, rubber and most all no/low maintenance floors
- Safely removes multiple coats of finish
- Low odor
- Low pH

| Item # | Size |
|-----------|--------------------|
| 168404-00 | 4 - 1 Gal. Bottles |
| 168B5-00 | 5 Gal. Bag in Box |

STG Cleaner Daily Cleaner and Protectant

Concentrate 1:64



Penetrates and protects porous grout, tile and natural stone with every cleaning.

- Easy Clean Technology extends time between cleaning cycles
- Keep floors looking cleaner longer
- Can be used daily in restrooms, kitchens, retail spaces and many others!
- Proprietary blend of surfactants, emulsifiers and repellency aids

| Item # | Size |
|-----------|-----------------------|
| 168512-00 | 12 - 32 oz. Bottles |
| 168547-00 | 4 - 2 Liter FastDraw® |
| 168504-00 | 4 - 1 Gal. Bottles |

STG Penetrating Sealer Stone, Tile, and Grout Penetrating Sealer

2,000 - 3,000 sq. ft. per gallon



Top in class stain resistance and durable for up to 1 year in high traffic applications.

- Semi-permanent protection from stain and soil embedment
- Effective on all types of tile, grout and natural stone surfaces
- The original beauty of your floor will shine through as it does not change the floor's appearance

| Item # | Size |
|-----------|--------------------|
| 168604-00 | 4 - 1 Gal. Bottles |

Green Earth® Daily Floor Cleaner Neutral pH Low Foaming Floor Cleaner

Concentrate 1:256



Emulsifies, removes soil from highly polished floor surfaces.

- Neutral pH
- Wets, emulsifies and suspends soils
- All ingredients are readily biodegradable
- Deodorizes surfaces

| Item # | Size |
|----------|-----------------------|
| 53647-00 | 4 - 2 Liter FastDraw® |
| 53604-00 | 4 - 1 Gal. Bottles |
| 53655-00 | 55 Gal. Drum |

Reinforce Daily Cleaner and Protectant

Concentrate 1:64



Neutral cleaner continually repairs abrasions with daily cleaning.

- Keeps floors looking cleaner longer
- Proprietary blend of surfactants, polymers and waxes
- Safe for LVT, sheet vinyl, rubber, linoleum and most flooring types
- Works on polished VCT floors to clean and repair minor scuffs and scratches

| Item # | Size |
|-----------|---------------------------|
| 168312-00 | 12 - 32 oz. Bottles |
| 168347-00 | 4 - 2 Liter FastDraw® |
| 168304-00 | 4 - 1 Gal. Bottles |
| 168348-00 | 6 - 32 oz. Dosing Bottles |

Tile Clean Deep Cleaning Hard Tile Cleaner

Concentrate 1:21



Efficiently attacks heavy kitchen greases as well as soap scum and organic soils.

- Non-fuming acid formula will not disturb grout or fixtures
- Foaming action provides superior "cling action" on vertical surfaces
- For use on ceramic tile, concrete, quarry tile, and restrooms

| Item # | Size |
|----------|--------------------|
| 11904-00 | 4 - 1 Gal. Bottles |
| 11955-00 | 55 Gal. Drum |



FLOOR MAINTENANCE

Daily Scrub SC
Floor Cleaner

Concentrate 1:256 - 1:1024



Streak-free performance even on heavily soiled floors.

- Great for use with a mop and bucket or automatic scrubber
- Economical and versatile concentration
- Excellent for scrub and recoat programs at stronger dilutions
- Provides a durable clean; extends time between costly strip-outs

| Item # | Size |
|----------|-----------------------|
| 18847-00 | 4 - 2 Liter FastDraw® |
| 18848-00 | 6 - 32 oz. FastDose™ |

Betco® One Step
High Speed Cleaner • Restorer

Concentrate 1:128



One step product reduces labor cost and need to recoat.

- Improves burnish response to repair scuffs and restore gloss
- Helps correct slippery floors and eliminates powdering
- Product certified for reduced environmental impact
- For use on resilient tile, linoleum, quarry tile, stone, terrazzo and vinyl tile

| Item # | Size |
|----------|-----------------------|
| 61812-00 | 12 - 32 oz. Bottles |
| 61804-00 | 4 - 1 Gal. Bottles |
| 61847-00 | 4 - 2 Liter FastDraw® |
| 61805-00 | 5 Gal. Pail |

Best Scrub
High Performance Top Scrub Floor Cleaner

Ready-To-Use



For interim top scrubbing prior to finish recoat.

- Effectively removes top coats of finish without attacking bottom layers
- Pleasant fragrance, no harsh odors
- Low foaming, virtually no foam in scrubber recovery tanks
- No residue, does not require flood rinsing

| Item # | Size |
|----------|---------------------|
| 67004-00 | 12 - 32 oz. Bottles |
| 67005-00 | 5 Gal. Pail |

Easy Task™
Thermoplastic Spray Buff

Concentrate 1:5



Effective repair of all floor finish types.

- Versatile - the perfect product for use with conventional and high speed equipment
- Provides excellent lubricity to pad surface for a higher shine
- Regular use allows reduces stripping and rewaxing procedures by 75%

| Item # | Size |
|----------|---------------------|
| 60812-00 | 12 - 32 oz. Bottles |
| 60804-00 | 4 - 1 Gal. Bottles |

pHerfect
Ice Melt Remover Floor Conditioner

Concentrate 1:15 - 1:54



Dual performance formula penetrates and neutralizes in one step.

- Perfect for entryways, resilient tile, terrazzo, ceramic tile and porcelain tile
- Formulated with neutralizing agents and surfactants to penetrate and clean tough soils and neutralize common ice melt ingredients
- Excellent floor conditioner after strip outs
- Leaves virtually no residue on the floor

| Item # | Size |
|----------|--------------------|
| 53304-00 | 4 - 1 Gal. Bottles |

pH7
Daily Floor Cleaner

Concentrate 1:64



Dissolves and removes a wide variety of soils, leaving floors film free.

- Neutral pH - Won't attack, haze, dull floor gloss or leave a film
- Restores shine to resilient tile floors
- Superior hard water performance
- Controlled foam, ideal for use in autoscrubbers, mop buckets, and spray bottles

| Item # | Size |
|----------|--------------------|
| 13804-00 | 4 - 1 Gal. Bottles |
| 138B5-00 | 5 Gal. Bag in Box |
| 13855-00 | 55 Gal. Drum |
| 13827-00 | 275 Gal. Tote |

pH7 Ultra
Daily Floor Cleaner

Concentrate 1:256



Dissolves and removes a wide variety of soils, leaving floors film free.

- Neutral pH won't dull floor finish or leave a film
- Super concentrated for low end use cost
- Low foam - perfect for automatic scrubber applications
- Effective in hard water

| Item # | Size |
|----------|-----------------------|
| 17870-00 | 6 - 32 oz. Bottles |
| 17848-00 | 6 - 32 oz. FastDose™ |
| 17847-00 | 4 - 2 Liter FastDraw® |
| 17805-00 | 5 Gal. Pail |
| 17855-00 | 55 Gal. Drum |

CRETE RX™ POLISHED CONCRETE & TERRAZZO MAINTENANCE

Crete Rx™ Liquigrind Ready-To-Use Honing Compound

Up to 1,000 sq. ft. per gallon

| Item # | Size |
|-----------|-------------|
| 167005-00 | 5 Gal. Pail |



Nanoparticle abrasive provides maximum coverage for increased efficiency.

- For use on polished concrete
- Easily removes excessive wear and etching
- Works with honing tool to grind out wear and staining

Crete Rx™ Densifier Ready-to-Use Densifying Compound

Up to 2,000 sq. ft. per gallon

| Item # | Size |
|-----------|-------------|
| 167105-00 | 5 Gal. Pail |



Improves abrasion and wear resistance along with improved chemical resistance.

- For use on polished concrete
- Nanoparticle silicate chemistry strengthens and hardens polished concrete
- Aids in lowering concrete dusting
- Intended for use following honing compound for restorative maintenance procedures

Crete Rx™ Stain Defense Ready-to-Use Penetrating Sealer

Up to 4,000 sq. ft. per gallon

| Item # | Size |
|-----------|-------------|
| 167205-00 | 5 Gal. Pail |



Penetrating polymers fill porous concrete to prevent stains and etch.

- For use on polished concrete
- Creates uniform, continuous protective surface
- Resists staining and etching
- Interacts with sealant infused polymers

Crete Rx™ Liquishield Concrete Guard

3,000 - 4,000 sq. ft. per gallon

| Item # | Size |
|-----------|--------------------|
| 167904-00 | 4 - 1 Gal. Bottles |



Advanced protection against stain and etch.

- Ideal for all polished concrete and terrazzo surfaces
- High gloss polymer formula
- Will not peel, flake, or discolor
- Resists scuffs, black marks, and soil
- Water-based formula

Crete Rx™ Liquistrip Concentrated Stripper for Permanent Coatings

Concentrate 1:3

| Item # | Size |
|-----------|--------------------|
| 167804-00 | 4 - 1 Gal. Bottles |



Water-based stripper formulated to remove permanent coatings.

- Strips coatings without the use of diamond tooling
- Quickly removes permanent concrete guards and finishes
- Ultra-concentrated formula for low end user cost
- Rinse-free

Crete Rx™ Densiclean Cleaner Concentrate with Densifier

Concentrate 1:256

| Item # | Size |
|----------|-----------------------|
| 67912-00 | 12 - 32 oz. Bottles |
| 67947-00 | 4 - 2 Liter FastDraw® |
| 67955-00 | 55 Gal. Drum |
| 67970-00 | 6 - 32 oz. Bottles |



For use on polished concrete.

- Advanced cleaning formula with proprietary silicate chemistry
- Interaction with free lime in concrete cuts down on dust mitigation over time
- Suspends the toughest soils and maintains a safe pH

CRETE RX™ SEALANT INFUSED CLEANING & BURNISHING PADS

| Item # | Size | Item # | Size | Item # | Size |
|-----------|------------------|-----------|------------------|-----------|------------------|
| E84111-00 | 11" - 5 pads/cs. | E84115-00 | 15" - 5 pads/cs. | E84124-00 | 24" - 5 pads/cs. |
| E84112-00 | 12" - 5 pads/cs. | E84116-00 | 16" - 5 pads/cs. | E84127-00 | 27" - 5 pads/cs. |
| E84113-00 | 13" - 5 pads/cs. | E84117-00 | 17" - 5 pads/cs. | | |
| E84114-00 | 14" - 5 pads/cs. | E84120-00 | 20" - 5 pads/cs. | | |



Crete Rx™ Concrete Stain Removal Kit

Ready-To-Use



Combines all Crete Rx™ products in one ready-to-use kit.

- Liquigrind removes wear and etching
- Densifier strengthens and hardens polished concrete
- Stain Defense penetrates open pores and creates a uniform continuous protective surface
- Convenient kit allows for spot stain remediation

| Item # | Size |
|----------|---------------------|
| 92411-00 | 12 - 32 oz. Bottles |

Crete Rx™ Reset Tool

Up to 4,000 sq. ft. per tool



Quickly smooths out rough, worn areas of polished concrete.

- Abrasive strength "resets" neglected polished concrete floors
- Prepares polished concrete floors for honing
- Hook-and-loop attachment

| Item # | Size |
|-----------|-----------------|
| E84132-00 | 3 - Tools / cs. |

Crete Rx™ Honing Tool

Up to 4,000 sq. ft. per tool



Channels LiquiGrind particles and prepares concrete for polishing.

- Hones concrete surface
- Removes imperfections and smooths surface
- Hook-and-loop attachment

| Item # | Size |
|-----------|-----------------|
| E84133-00 | 3 - Tools / cs. |

Crete Rx™ Polishing Tool

Up to 8,000 sq. ft. per tool



Pushes resin to fill pores, building a gloss barrier on concrete.

- Tool is infused with sealant
- Effective in dry polish process
- Follows the honing step of the Crete Rx™ system
- Hook-and-loop attachment

| Item # | Size |
|-----------|-----------------|
| E84134-00 | 3 - Tools / cs. |

Crete Rx™ Tool Holder



Universal magnetic tool holder with hook-and-loop backing.

- Accepts and organizes tools for Crete Rx™ system

| Item # | Size |
|-----------|-----------------|
| E84130-00 | 3 - Tools / cs. |

Counter Rotating Plate (CRP)



Enhances performance and productivity of floor machines.

- Adds 26 pounds of head pressure and 960 RPM with counter-rotating motion
- Allows floor machines to better remove stains and etches
- Produces higher depth of gloss
- Ultra-durable aluminum and iron construction

| Item # | Size |
|-----------|------------------------|
| E84143-00 | 1 - 17"/20" Compatible |

Tool Adaptor Pad (TAP)



Universal adapter pad gives autoscrubbers and floor machines Crete Rx™ capability.

- Suitable for autoscrubbers up to 32"
- Suitable for 17" and 20" floor machines
- Double-sided hook-and-loop attachment for Crete Rx™ tools
- Indicators make it simple to identify where to place tools

| Item # | Size |
|-----------|------------------------|
| E80001-00 | 1 - 17"/20" Compatible |

CARPET SPOTTERS

FiberPRO® Spot Bet All Purpose Spot and Stain Remover

Ready-To-Use

| Item # | Size |
|----------|---------------------|
| 42512-00 | 12 - 32 oz. Bottles |



Versatile cleaner effectively removes common stains.

- Effective spotter for use in health care settings; removes betadine and iodine stains
- Quickly unlocks soil from fibers
- Removes most common stains

FiberPRO® Red 'N' Brown Out Red Stain • Tannin Debrowner Treatment • RTU

Ready-To-Use

| Item # | Size |
|----------|---------------------|
| 41918-00 | 12 - 16 oz. Bottles |
| 41904-00 | 4 - 1 Gal. Bottles |



Powerful dual acid stain removal performance.

- Eliminates browning caused by alkaline build-up from shampoo residue
- Dual acid formula removes difficult, stubborn stains
- Can be used as a final rinse after extracting
- For use on all types of carpet, rugs, and upholstery

FiberPRO® Alkaline Conditioner RTU • pH Neutralizer Treatment

Ready-To-Use

| Item # | Size |
|----------|---------------------|
| 41518-00 | 12 - 16 oz. Bottles |



Neutralizes acidic stains while lifting stain from carpet.

- Residue free, rinses completely
- Protects carpet from long-term attacks from acidic stains
- Protects individuals from coming into harmful contact with treated carpeting
- For use on all types of carpet, rugs, and upholstery

Green Earth® Citrus Carpet Spotter Natural Gum and Grease Remover

Ready-To-Use

| Item # | Size |
|----------|---------------------|
| 41618-00 | 12 - 16 oz. Bottles |



Gel formula delivers powerful solvent cleaning directly to desired location.

- Easy to use, thickened formula is easy to apply
- Clings to stain, providing elongated stain removing performance
- Rinses easily with water, will not leave residue
- For use on all types of carpet, rugs, and upholstery

FiberPRO® P.O.-G Paint, Oil and Greaser Remover

Ready-To-Use

| Item # | Size |
|----------|---------------------|
| 41718-00 | 12 - 16 oz. Bottles |



Powerful natural citrus solvents efficiently remove paint, grease, and oil.

- Rinses easily and completely with water
- Extremely versatile, removes a wide variety of stains
- For use on all types of carpet, rugs and upholstery

FiberPRO® Enzyme Deodorizer Organic Stain Remover and Deodorizer

Ready-To-Use

| Item # | Size |
|----------|---------------------|
| 41818-00 | 12 - 16 oz. Bottles |



Eliminates persistent odors from vomit, blood, urine, smoke, and pet stains in carpet/upholstery.

- Pleasant fragrance
- For use alone or in combination with appropriate* cleaners for improved performance and added deodorization
- Enzymes within deodorizer eliminate source of odor

FiberPRO® Gum Remover

Ready-To-Use

| Item # | Size |
|----------|---------------------------|
| 00923-00 | 12 - 6.5 oz. Aerosol Cans |



Fast-freezing action hardens gum and wax for quick removal.

- Convenient, easy-to-use aerosol
- Does not leave a residue
- Allows for a more efficient clean than solvents
- For use on most surfaces including carpet, rugs, and upholstery



CARPET CARE

FiberPRO® TLC
Traffic Lane Cleaner Concentrate

Concentrate 1:20

| Item # | Size |
|----------|--------------------|
| 40604-00 | 4 - 1 Gal. Bottles |



Labor saving solvent quickly emulsifies the worst ground-in soil problems.

- Economical, highly concentrated detergent solvent blend
- Can also be used as a booster for rotary and extraction methods
- For use on carpeting, excluding stain resistant carpeting

FiberPRO® Es-Steam™
Low Foam Extraction Cleaner

Concentrate 1:256

| Item # | Size |
|----------|-----------------------|
| 40247-00 | 4 - 2 Liter FastDraw® |
| 40204-00 | 4 - 1 Gal. Bottles |
| 40205-00 | 5 Gal. Pail |
| 40255-00 | 55 Gal. Drum |



Highly concentrated formula delivers powerful cleaning action at an affordable price.

- Rinses easily and leaves no residue
- Contains patented deodorizing counteractant, eliminates odors at the source
- Penetrates heavy soils
- For use on carpeting, excluding stain resistant carpeting

FiberPRO® Extraction Cleaner
5th Generation Extraction Cleaner

Concentrate 1:256

| Item # | Size |
|----------|--------------------|
| 41204-00 | 4 - 1 Gal. Bottles |



Powerful low-foaming surfactant blend unlocks soil and dirt for easy removal.

- Economical, highly concentrated formula
- Low residue, rinses freely so carpets stay cleaner, longer
- Contains patented deodorizing counteractant, eliminates odors at the source
- For use on all types of carpeting and upholstery, including stain resistant carpeting

FiberPRO® BonBet™
Carpet Shampoo

Concentrate 1:8

| Item # | Size |
|----------|--------------------|
| 40804-00 | 4 - 1 Gal. Bottles |



Fast drying formula dries in less than one hour when used as directed.

- Intended for use with dry or wet bonnet methods
- Powerful blend quickly removes oil, grease, and soils
- For use on all types of carpeting and upholstery, including stain resistant carpeting

FiberCAP™ MP
Multi-Purpose Encapsulation Cleaner

Concentrate 1:10 - 1:32

| Item # | Size |
|----------|--------------------|
| 42004-00 | 4 - 1 Gal. Bottles |



Advanced polymer technology enhances soil entrapment, providing better release from carpet fiber.

- Leaves carpets cleaner, longer
- Low moisture, fast drying
- Minimizes resoiling
- Multi-purpose, versatile cleaner

FiberPRO® Foam Control
Liquid Defoamer

Concentrate 1:128

| Item # | Size |
|----------|--------------------|
| 40304-00 | 4 - 1 Gal. Bottles |
| 40355-00 | 55 Gal. Drum |



Fast acting, breaks foam on contact.

- Eliminates downtime and wasted effort in dumping recovery tanks
- Versatile, has many uses and can be used anywhere foaming is a problem
- Use in recovery tanks of extraction machines

SPORTS ZONE® WATERBASED WOOD COATINGS

StreetShoe® NXT

Waterbased High Traffic Wood Floor Finish

Up to 450 - 650 sq. ft. per gallon



Waterbased system formulated specifically for high traffic wood floors.

- Provides a clear finish that remains unmatched in durability
- Fastest cure available, 90% cured in 24 hours
- UV Inhibitor minimizes sunlight-related color changes
- Apply directly over stain, easy application

| Item # | Size |
|------------|-------------------------------|
| B1664-4312 | 4 - 1 Gal. F-Style w/Catalyst |
| 166405-00 | 5 Gal. Pail in Box w/Catalyst |

GymShoe®

Two Component Waterbased Sport Floor Finish

Up to 500 - 700 sq. ft. per gallon



Exceptionally durable high-traffic sport floor finish.

- Clear, non-yellowing urethane
- 24 hour pot life: once catalyzed, can be re-catalyzed
- Great shine, resists heel marks
- Fast drying, 2-3 hours
- Powders well during application
- Perfect for large sport complexes, higher education, retail and commercial spaces

| Item # | Size |
|------------|-------------------------------|
| B1677-4312 | 4 - 1 Gal. F-Style w/Catalyst |
| 167705-00 | 5 Gal. Pail in Box w/Catalyst |

Emulsion® PRO+

Advanced Oil and Water Wood Floor Finish and Sealer

Up to 450 - 550 sq. ft. per gallon



Commercial grade self-leveling sealer and finish.

- One-component extended pot life
- Ambering, enhances beauty of wood
- Is not OMU, non-flammable
- VOC Compliant in US and Canada
- Low odor

| Item # | Size |
|------------|-------------------------------|
| B0675-4312 | 4 - 1 Gal. F-Style w/Catalyst |
| B0675-0512 | 5 Gal. Pail |

Player's Choice™ One

Clear Waterbased Sport Floor Finish

Up to 500 - 750 sq. ft. per gallon



One component waterbased finish specially formulated for sports floor applications.

- Exceptional durability
- Easy maintenance
- Excellent chemical and perspiration resistance
- Superior flow, leveling, and low foam formula
- Low, non-offensive odor

| Item # | Size |
|------------|-------------------------------|
| B1659-4312 | 4 - 1 Gal. F-Style w/Catalyst |
| B1659-0512 | 5 Gal. Pail |

SPORTS ZONE® WOOD FLOOR MAINTAINERS

Squeaky™ Floor Cleaner

Maintenance Cleaner for Wood Floors

Concentrate 1:4, 1:32, 1:64



Tough on dirt, gentle on floors and cleans without leaving a residue.

- Commercial-grade cleaner for all wood and laminate floors
- No dulling residue
- Excellent choice for routine cleaning
- Environmentally safe
- First step in TyKote® Dust-free Refinishing System

| Item # | Size |
|------------|--------------------|
| B0695-4312 | 4 - 1 Gal. Bottles |
| B0695-0512 | 5 Gal. Pail |

Game Time Cleaner

Maintenance Cleaner for Wood Floors

Concentrate 1:64



For use on sport and commercial wood floors.

- Cleans and removes abrasive soils
- Fast drying
- Leaves no residue
- Restores traction for sports floors
- Versatile - use for daily and periodic maintenance

| Item # | Size |
|------------|-----------------------|
| B069747-00 | 4 - 2 Liter FastDraw® |



SPORTS ZONE® WOOD FLOOR MAINTAINERS

I.F.T Intensive Floor Treatment
Aggressive Wood Floor Cleaner

Concentrate 1:32

| Item # | Size |
|------------|--------------------|
| B1111-0412 | 4 - 1 Gal. Bottles |



Aggressive cleaner, will easily remove ground-in dirt and much more.

- Deep, intensive cleaning
- Effectively removes scuffs and black marks
- I.F.T. is the first step in a two-part cleaning process to prepare floors for TyKote® Dust-free Refinishing System

Dust Mop Treatment
Use on Mops, Cloths, and Filters

Ready-To-Use

| Item # | Size |
|----------|--------------------------|
| 03523-00 | 12 - 17 oz. Aerosol Cans |



Unique formula attracts dust and dirt while prolonging floor appearance when paired with proper dust mopping procedures.

- Treated cloths and mops may be used within 15 minutes of treatment
- Will not cause streaking or leave a film - Pleasant fragrance
- For use on carpeting, excluding stain resistant carpeting

DM120
Dust Mop Treatment

Ready-To-Use

| Item # | Size |
|----------|--------------------|
| 12004-00 | 4 - 1 Gal. Bottles |
| 12055-00 | 55 Gal. Drum |



Treats dust mops / cloths for dust mopping.

- Attracts dust and dirt
- Holds dust like a magnet
- Brightens surfaces
- Economical
- Penetrates mop fibers

TyKote®
Wood Floor Bonding Agent

2,500 - 3,000 sq. ft. per gallon

| Item # | Size |
|------------|--------------------|
| B0691-4312 | 4 - 1 Gal. F-Style |



Revolutionary bonding agent used between existing floor and new topcoat.

- Eliminates the dust, noise, and mess of traditional recoating methods
- Fast: recoat tonight, back in business tomorrow
- Simple and inexpensive process
- Works with site-finished and most prefinished wood floors

SPORTS ZONE® FLOOR APPLICATORS

Heavy Weight Bar
18" / 24" Application Bar

| Item # | Size |
|----------|-------------------------|
| 91185-00 | 1 - 18" Bar Only |
| 91174-00 | 1 - 24" Bar with Handle |



For use on sport and commercial wood floors.

- Consistent and even coverage
- Applies a thicker coat
- Applies finish smoothly and lint-free
- Streak and bubble-free application

Applicator Refill Pads
Refill Pads for Heavy Weight Bar

| Item # | Size |
|----------|----------------------|
| 92426-00 | 20 - 18" Pad Refills |
| 92427-00 | 20 - 24" Pad Refills |



Thousands of microfibers ensure smooth and beautiful finish.

- Applies finish in a smooth, lint free coat
- Streak and bubble-free finish application
- Tapered ends for better maneuverability
- For use with medium or heavy weight T-bar



With 450+ high-performing formulations, our breadth and depth of line conquer any cleaning challenge

From quarts to totes and ready-to-use to concentrates, Betco offers a size and format for everyone

Sustainable products have verified performance and compliance with health/ environmental standards



General Cleaning Solutions

Professional Products, Powerful Clean

Betco products clean and deodorize entire facilities in diverse vertical markets every day. Our comprehensive line features all-purpose cleaners to quickly remove filth from a variety of surfaces, degreasers to penetrate tough oil-based soils, products to keep restrooms hygienic and spotless, and hospital-grade disinfectants to stop the spread of illness-causing germs.



ALL PURPOSE

Top Flite™
All Purpose Cleaner Concentrate

Concentrate 1:20 - 1:64



Suspends the toughest soils and prevents them from redepositing on the surface.

- Versatile product, suitable for mop and bucket, spray and sponge applications
- Can be used as a top scrub cleaner in scrub and recoats
- Extremely effective in hard water
- Safe for use on most hard surfaces

| Item # | Size | Item # | Size |
|----------|-----------------------|----------|--------------------|
| 15012-00 | 12 - 32 oz. Bottles | 15004-00 | 4 - 1 Gal. Bottles |
| 15070-00 | 6 - 32 oz. Bottles | 15005-00 | 5 Gal. Pail |
| 15048-00 | 6 - 32 oz. FastDose™ | 15055-00 | 55 Gal. Drum |
| 15047-00 | 4 - 2 Liter FastDraw® | 15027-00 | 275 Gal. Tote |

Spectaculoso™
Lavender Multi-Purpose Cleaner

Concentrate 1:64



Cleans and deodorizes a variety of surfaces.

- Highly effective on most water washable surfaces
- Concentrated formula saves money
- Effective even in hard water; suspends soils and prevents them from redepositing on the surface
- Rinse-free

| Item # | Size |
|-----------|-----------------------|
| 100370-00 | 6 - 32 oz. Bottles |
| 102347-00 | 4 - 2 Liter FastDraw® |
| 100304-00 | 1 - Gal. Bottle |
| 100355-00 | 55 Gal. Drum |

Green Earth® Peroxide Cleaner
Concentrated Hydrogen Peroxide All Purpose Cleaner

Concentrate 1:10 - 1:64



Clean with the power of peroxide.

- Will not damage clothing like traditional bleach cleaners
- Removes mineral deposits and soap scum from a variety of bathroom surfaces
- Daily cleaner

| Item # | Size |
|----------|-----------------------|
| 33604-00 | 4 - 1 Gal. Bottles |
| 33647-00 | 4 - 2 Liter FastDraw® |
| 336B2-00 | 2 - 2 Liter FastDraw® |
| 33655-00 | 55 Gal. Drum |

Green Earth® RTU Peroxide Cleaner
Ready-To-Use Multi-Purpose Cleaner

Ready-To-Use



Cleans floors, showers, glass and other hard surfaces.

- Removes mineral deposits, hard water build up and soap scum from a variety of restroom surfaces
- Will not damage clothing like traditional bleach cleaners
- Daily cleaner

| Item # | Size |
|----------|---------------------|
| 32912-00 | 12 - 32 oz. Bottles |

Push®
Probiotic All Purpose Cleaner and Odor Eliminator

Ready-to-Use, 1:16-1:64



Use on any hard surface, drain maintenance, carpet stain removal, and odor mitigation.

- Contains enzyme producing bacteria to digest complex proteins, fats, greases, and odors
- Non-corrosive, non-flammable, non-acidic and non-caustic
- Available in three great scents - Classic Mint, Lemon and Sage, Mango

| Item # | Size | Lemon and Sage | |
|----------|-----------------------|----------------|---------------------|
| | | Classic Mint | Item # |
| 13312-00 | 12 - 32 oz. Bottles | 260712-00 | 12 - 32 oz. Bottles |
| 13347-00 | 4 - 2 Liter FastDraw® | 260704-00 | 4 - 1 Gal. Bottles |
| 13304-00 | 4 - 1 Gal. Bottles | 260705-00 | 5 Gal. Pail |
| 13305-00 | 5 Gal. Pail | 260812-00 | 12 - 32 oz. Bottles |
| 13377-00 | 15 Gal. Drum | 260804-00 | 4 - 1 Gal. Bottles |
| 13355-00 | 55 Gal. Drum | 260805-00 | 5 Gal. Pail |

Citrufoam
Citrus All Purpose Cleaner

Ready-To-Use



Clinging foam provides extended contact time when cleaning vertical and inverted surfaces.

- Deodorizes and removes objectionable odors at the source
- Fortified with natural citrus solvents
- Lifts a variety of stubborn stains
- For use on most washable surfaces

| Item # | Size |
|----------|--------------------------|
| 06623-00 | 12 - 19 oz. Aerosol Cans |

Top Flite Plus™
Industrial All Purpose Cleaner

Ready-To-Use



Clinging foam and powerful formula easily removes stubborn soils.

- Emulsifies grease, oil, and much more for easy removal
- One of the most powerful aerosol foam cleaners available
- For use on most hard surfaces

| Item # | Size |
|----------|--------------------------|
| 05923-00 | 12 - 19 oz. Aerosol Cans |

ALL PURPOSE

Green Earth® Natural All Purpose Cleaner
Hard Surface Cleaner

Concentrate 1:10 - 1:64



This versatile and dilutable cleaner quickly and effectively removes a variety of soils from any surface not harmed by water.

- Clean virtually anything with the power of nature
- Dilutable product for light, medium or heavy duty soils
- Will not streak or smear

| Item # | Size |
|----------|-----------------------|
| 19847-00 | 4 - 2 Liter FastDraw® |
| 19804-00 | 4 - 1 Gal. Bottles |
| 19855-00 | 55 Gal. Drum |

Green Earth® Glass Cleaner
Streak Free Glass and Surface Cleaner

Concentrate 1:64



The perfect product for glass, mirrors and many hard surfaces.

- Cleans and polishes without scratching, streaking, fogging or clouding
- Concentrated for effective and economical use

| Item # | Size |
|----------|-----------------------|
| 53547-00 | 4 - 2 Liter FastDraw® |
| 53504-00 | 4 - 1 Gal. Bottles |

Clear Image Concentrate
Non-Ammoniated Glass and Surface Cleaner

Concentrate 1:64



Cleans and polishes glass and plastics without scratching, streaking, fogging, or clouding.

- Powerful cleaning agents cut through grease, smudges, fingerprints, and soils
- Convenient and pleasant to use, no ammonia odor
- For use on mirrors, glass, plastic, and most hard surfaces, including tinted windows and plexiglass

| Item # | Size |
|----------|-----------------------|
| 19947-00 | 4 - 2 Liter FastDraw® |
| 19970-00 | 6 - 32 oz. Bottles |

Clear Image
Non-Ammoniated Glass and Surface Cleaner

Ready-To-Use



Streak free formula, leaves no film.

- Non-ammoniated, no harsh fumes
- Powerful cleaning agents remove tough soil
- Convenient ready-to-use formulation
- For use on mirrors, glass, plastic and most hard surfaces

| Item # | Size |
|----------|---------------------|
| 19212-00 | 12 - 32 oz. Bottles |
| 19204-00 | 4 - 1 Gal. Bottles |
| 19255-00 | 55 Gal. Drum |

Clear Image Aerosol
Non-Ammoniated Glass and Surface Cleaner

Ready-To-Use



Cleans and polishes glass and plastics without scratching, streaking, fogging and clouding.

- Convenient and pleasant to use, no ammonia odor
- Can be used on plexiglas and tinted windows
- Convenient aerosol package

| Item # | Size |
|----------|--------------------------|
| 09223-02 | 12 - 19 oz. Aerosol Cans |

Deep Blue Concentrate
Ammoniated Glass and Surface Cleaner

Concentrate 1:64



Fortified with ammonia for heavy duty cleaning with no streaks.

- Cleans and brightens most hard surfaces
- Dissolves smoke, grease and smudge marks
- For use on mirrors, glass, stainless steel, porcelain, chrome and most hard surfaces

| Item # | Size |
|----------|-----------------------|
| 18148-00 | 6 - 32 oz. FastDose™ |
| 18147-00 | 4 - 2 Liter FastDraw® |

Deep Blue
Ammoniated Glass and Surface Cleaner

Ready-To-Use



Penetrates and dissolves stubborn soils while polishing hard surfaces.

- Cleans and brightens most hard surfaces
- Fortified with ammonia for powerful cleaning
- Dissolves smoke, grease, smudge marks, and more
- For use on mirrors, glass, stainless steel, porcelain, and most hard surfaces

| Item # | Size |
|----------|---------------------|
| 10812-00 | 12 - 32 oz. Bottles |
| 10804-00 | 4 - 1 Gal. Bottles |
| 10855-00 | 55 Gal. Drum |



ALL PURPOSE

Deep Blue Aerosol

Ammoniated Glass and Surface Cleaner

Ready-To-Use

| Item # | Size |
|----------|--------------------------|
| 09023-00 | 12 - 19 oz. Aerosol Cans |



Convenient aerosol with clinging foam cuts through grease and smudges.

- Clinging foam cuts through grease, smudges, fingerprints and soils
- Fortified with ammonia to clean and dry quickly
- Cleans and brightens most hard surfaces
- Perfect for inverted or vertical cleaning

Deep Blue Concentrate 1:20

Ammoniated Glass and Surface Cleaner

Concentrate 1:20

| Item # | Size |
|----------|---------------------|
| 28112-00 | 12 - 32 oz. Bottles |
| 28104-00 | 4 - 1 Gal. Bottle |



Powerful glass cleaner dissolves smoke, grease, and smudge marks.

- Fortified with ammonia for powerful cleaning
- Polishes and brightens glass and window surfaces
- Quickly penetrates dust and grime

Stainless Steel Cleaner & Polish Aerosol

Stainless Steel Cleaner and Brightener

Ready-To-Use

| Item # | Size |
|----------|--------------------------|
| 06523-00 | 12 - 19 oz. Aerosol Cans |



Cleans, polishes, brightens and protects.

- Convenient easy-to-use aerosol package
- Polishes easily leaving no greasy film
- Easily removes tough oil-based stains as well as water spots, spills, and food soils
- For use on aluminum, ceramic tile, chrome, porcelain and stainless steel

Lemon Furniture Polish

Natural Lemon Oil Furniture Polish

Ready-To-Use

| Item # | Size |
|----------|--------------------------|
| 06023-00 | 12 - 15 oz. Aerosol Cans |



Natural lemon conditions, re-moisturizes, and protects fine woods without build-up.

- Cleans and removes wax build-up
- Repairs minor scratches and cracks
- For use on woodwork, vinyl, plastic, laminate and metal

Betco® Brite MSP

High Gloss Multi-Surface Polish • Protectant

Ready-To-Use

| Item # | Size |
|----------|---------------------|
| 15512-00 | 12 - 32 oz. Bottles |
| 15555-00 | 55 Gal. Drum |



Cleans, polishes, and protects a variety of surfaces.

- Protects surfaces against fingerprints and smudges
- Conditions wood and leather
- Natural lemon oil provides a fresh fragrance.
- Rubs out easily to a hard shine
- For use on woodwork, vinyl, plastic, Formica® and metal

Graffiti Remover

Multi-Surface Graffiti Remover

Ready-To-Use

| Item # | Size |
|----------|--------------------------|
| 01523-00 | 12 - 19 oz. Aerosol Cans |



Fast acting gel formula adheres to vertical surfaces for longer contact time.

- Penetrates and removes tar, ink, paints, crayon, wax build-up and scotch tape
- Quickly penetrates and dissolves graffiti
- For use on aluminum, brick, ceramic tile, concrete, glass, marble, porcelain and steel



INDUSTRIAL DEGREASERS

Citruspray™ RTU Foaming Degreaser

Ready-To-Use



Fortified with natural citrus solvents for faster removal of oily and greasy soils.

- Quickly penetrates fats, oils, and grease-based soils
- Clinging foam provides extended cleaning power
- For use on cement, concrete, ceramic tile, grout, porcelain, plastic, resilient tile, walls, stone, stainless steel and tools

| Item # | Size |
|----------|--------------------|
| 13712-00 | 6 - 32 oz. Bottles |
| 13755-00 | 55 Gal. Drum |

Speedex Ready-To-Use Cleaner • Degreaser

Ready-To-Use



Formulated with a blend of powerful cleaning ingredients and boosters.

- Fast acting industrial strength, removes the toughest oily, greasy and stubborn soils
- For use on cement, concrete, equipment, tile, floors, stone, stainless steel, walls, machines and tools in industrial settings

| Item # | Size |
|----------|--------------------|
| 17312-00 | 6 - 32 oz. Bottles |
| 17304-00 | 4 - 1 Gal. Bottles |
| 17355-00 | 55 Gal. Drum |

Speedex Concentrate Heavy Duty Degreaser

Concentrate 1:20



Formulated with a blend of cleaning ingredients and power boosters.

- Quickly removes ink, marker, graffiti, and crayon from a variety of surfaces
- Deodorizes as it cleans
- For use on nonporous concrete, plastic, resilient tile, and steel

| Item # | Size |
|----------|-----------------------|
| 52847-00 | 4 - 2 Liter FastDraw® |
| 52855-00 | 55 Gal. Drum |

Citrus Chisel Natural Non-Butyl Citrus Cleaner Degreaser

Concentrate 1:20 - 1:100



Superior cleaner/degreaser penetrates fats, oils, and grease-based soils.

- Performs practically any cleaning task, from factory to kitchen
- Economical dilution
- Deodorizes with pleasant citrus fragrance while it cleans
- For use on cement, concrete, equipment, floors, machinery, motors, and tools

| Item # | Size |
|----------|-----------------------|
| 16712-00 | 12 - 32 oz. Bottles |
| 16747-00 | 4 - 2 Liter FastDraw® |
| 16704-00 | 4 - 1 Gal. Bottles |
| 16705-00 | 5 Gal. Pail |
| 16755-00 | 55 Gal. Drum |
| 16727-00 | 275 Gal. Tote |

Factory Formula™ HP High Performance Industrial Cleaner • Degreaser Concentrate

Concentrate 1:5 - 1:100



Removes the toughest rubber tire marks, grease, and oil from concrete floors and other surfaces.

- Extremely low foam formula
- Leaves no residual hazy film
- Perfect for use in autoscrubbers and in mop buckets
- For use on cement, concrete, metal, steel, and stone

| Item # | Size |
|----------|--------------------|
| 19304-00 | 4 - 1 Gal. Bottles |
| 19305-00 | 5 Gal. Pail |
| 19355-00 | 55 Gal. Drum |
| 19327-00 | 275 Gal. Tote |

Green Earth® Velocity® Non-Butyl Degreaser

Concentrate 1:5 - 1:30



Neutral-yet-powerful cleaner quickly and effectively removes stubborn soils from a variety of surfaces.

- Penetrates and removes inks, oils, greases, and fats
- As effective as alkaline and butyl degreasers
- Deodorizes as it cleans
- Safely removes black heel mark from rubber flooring

| Item # | Size |
|----------|-----------------------|
| 19747-00 | 4 - 2 Liter FastDraw® |
| 19704-00 | 4 - 1 Gal. Bottles |
| 19755-00 | 55 Gal. Drum |

Green Earth® Natural Degreaser Hard Surface Degreaser

Concentrate 1:20



Powerful, environmentally preferred degreaser removes tough soils and greases.

- Removes inks, oils, greases, and fats from a variety of surfaces
- Manufactured from renewable resources
- Non-combustible, non-corrosive, and biodegradable
- Low foaming formula
- Safe for use on all water washable surfaces

| Item # | Size |
|----------|-----------------------|
| 21747-00 | 4 - 2 Liter FastDraw® |
| 21704-00 | 4 - 1 Gal. Bottles |
| 21755-00 | 55 Gal. Drum |

INDUSTRIAL DEGREASERS

Grease Solv
Probiotic Degreaser

Concentrate 1:10 - 1:128



Rivals any traditional degreaser with added probiotic package for continuous cleaning.

- High count of non-pathogenic probiotics for better cleaning
- Probiotics target petroleum soils and other industrial organics
- Digests organic material, creating fewer issues downstream
- Suitable for industrial cleaning and degreasing, pressure washing, marine cleaning, auto bays, and more

| Item # | Size |
|-----------|--------------------|
| 260104-00 | 4 - 1 Gal. Bottles |
| 260105-00 | 5 Gal. Pail |
| 260155-00 | 55 Gal. Drum |
| 260127-00 | 275 Gal. Tote |

CTW501
Car and Truck Wash

Concentrate 1:128



For use in automated car washes, brush and manual washing applications.

- Quickly breaks down and suspends dirt, dust, grime, insects and road film to be rinsed freely
- Will not dull, waterspot, or streak painted surfaces, windows or chrome
- High sudsing properties help to lubricate brushes to aid in their efficient use

| Item # | Size |
|----------|-------------------|
| 50104-00 | 4 - 1 Gal. Bottle |
| 50105-00 | 5 Gal. Pail |
| 50155-00 | 55 Gal. Drum |
| 50127-00 | 275 Gal. Tote |

Never B4
Vehicle Pressure Washer Cleaner

Concentrate 1:25 - 1:100



Quickly removes dirt, oil, grease, road film and exhaust from aluminum and painted surfaces.

- Sheeting action does not leave a film or residue
- Concentrated proprietary blend of cleaning detergents quickly attacks soil
- For use on trucks, tank trucks and buses

| Item # | Size |
|----------|---------------|
| 50205-00 | 5 Gal. Pail |
| 50255-00 | 55 Gal. Drum |
| 50227-00 | 275 Gal. Tote |

AC114
Multi-Purpose Acid Cleaner • Delimer

Concentrate 1:20



Powerful descaler and acid etcher, dissolves and emulsifies tough soils.

- Concentrated, fast, and effective
- For use on acid resistant metal, concrete and cement
- Pleasant odor
- Restores and rejuvenates many surfaces

| Item # | Size |
|----------|--------------------|
| 11404-00 | 4 - 1 Gal. Bottles |
| 11455-00 | 55 Gal. Drum |
| 11427-00 | 275 Gal. Tote |

Ultra 2000™
Super Double Strength Degreaser

Concentrate 1:10 - 1:100



Powerful degreasing action instantly penetrates oily, greasy soils.

- Concentrated butyl based cleaner for heavy duty cleaning
- Instantly penetrates and emulsifies fats, oils and grease based soils
- Low foaming, ideal for automatic scrubbers, pressure washers, and dip tanks

| Item # | Size |
|----------|--------------------|
| 13604-00 | 4 - 1 Gal. Bottles |
| 13605-00 | 5 Gal. Pail |
| 13655-00 | 55 Gal. Drum |
| 13627-00 | 275 Gal. Tote |

Super Kemite®
Heavy Duty Cleaner • Degreaser

Concentrate 1:10 - 1:32



Versatile, may be used in a variety of cleaning applications with different dilutions.

- Heavy duty cleaning made easy with this advanced grease cutting formula
- Fast penetration and breakdown of greases and oils
- Low foaming formula, ideal for use in automatic scrubbers and pressure washers

| Item # | Size |
|----------|--------------------|
| 10304-00 | 4 - 1 Gal. Bottles |
| 10305-00 | 5 Gal. Pail |
| 10355-00 | 55 Gal. Drum |
| 10327-00 | 275 Gal. Tote |

Liquid Chisel® Max
Ultra Strength Non-Butyl Degreaser

Concentrate 1:10 - 1:100



Advanced and versatile formula quickly emulsifies both animal fats and petroleum greases.

- Varying dilution rates for light and heavy duty applications
- Performs well in hard water
- Non-butyl, no harmful vapors or toxic solvents
- Ideal for automatic scrubber use

| Item # | Size |
|----------|--------------------|
| 14504-00 | 4 - 1 Gal. Bottles |
| 14505-00 | 5 Gal. Pail |
| 14555-00 | 55 Gal. Drum |
| 14527-00 | 275 Gal. Tote |

INDUSTRIAL CHEMICAL MANAGEMENT

High Flow Proportioner

Industrial Proportioner for Auto Scrubbers



For quick filling of automatic scrubbers.

- Conveniently mounts above drum or tote
- Lever control for hands-free filling
- Small and compact unit mounts anywhere
- 8 gallon per minute flow rate

| Item # | Size |
|----------|---------------|
| 90423-00 | 1 - Dispenser |

Tote / Tank Drum Proportioner

Industrial Proportioner for Drums and Totes



The easiest way to dilute directly from drums.

- No complicated wall mount or assembly needed
- 4 gallon per minute flow rate
- Conveniently mounts directly on drum or tote

| Item # | Size |
|----------|---------------|
| 90102-00 | 1 - Dispenser |

INDUSTRIAL SOLVENT DEGREASERS

Citrusolv™ Concentrate

Natural Degreaser • Deodorizer

Ready-to-Use, Concentrate 1:32



Natural citrus solvents remove the toughest soils.

- Perfect for dip cleaning and removing heavy build-up of industrial soil
- Deodorizes as it cleans with citrus fragrance
- Meets VOC requirements in most states

| Item # | Size |
|----------|---------------------|
| 20918-00 | 12 - 16 oz. Bottles |
| 20904-00 | 4 - 1 Gal. Bottles |
| 20905-00 | 5 Gal. Pail |
| 20955-00 | 55 Gal. Drum |

Citrusolv™ 40

Multi-Purpose • Heavy-Duty Solvent • Degreaser

Concentrate 1:5 - 1:43



High quality natural citrus terpenes remove heavy grease deposits and tough soils.

- Nonacidic, noncaustic and non corrosive
- Cleans greasy floors, walls and equipment
- Removes adhesives, decals and chewing gum
- Controls odors in problem areas

| Item # | Size |
|----------|--------------------|
| 21104-00 | 4 - 1 Gal. Bottles |
| 21155-00 | 55 Gal. Drum |

Citrusolv™ HF

High Flash Solvent • Degreaser

Ready-To-Use



Evaporates quickly with no residue.

- 145° F flash point reduces flammability concerns.
- Rapidly removes grease, oil, and other contaminants
- Deodorizes as it cleans
- Non-acidic, non-caustic and non-corrosive.

| Item # | Size |
|----------|--------------|
| 21405-00 | 5 Gal. Pail |
| 21455-00 | 55 Gal. Drum |

Citrusolv™ WR

Water Rinsable Solvent • Degreaser

Ready-To-Use



Natural citrus solvents quickly penetrate grease, oils, adhesives, undercoating, and rubber tire marks.

- Perfect for dip cleaning and removing heavy build-up of industrial soil
- Deodorizes as it cleans with citrus fragrance
- Meets VOC requirements in most states

| Item # | Size |
|----------|--------------|
| 21255-00 | 55 Gal. Drum |



RESTROOM - ACID CLEANERS

Kling™

Thickened Acid Toilet Bowl and Urinal Cleaner

Ready-To-Use



Thickened formula for better cleaning.

- 9% hydrochloric acid for tough soils
- Pleasant mint fragrance
- For use on toilets, urinals, ceramic tile floors, porcelain sinks and urinals

| Item # | Size |
|----------|---------------------|
| 07512-00 | 12 - 32 oz. Bottles |
| 07555-00 | 55 Gal. Drum |

Bol Maid®

Porcelain Toilet Bowl Cleaner

Ready-To-Use



Quickly removes rust, scale, stains, hard water mineral deposits and urine salts.

- 9% hydrochloric acid for tough soils
- Pleasant mint fragrance
- Inhibited to protect plumbing and fixtures
- For use on toilets and urinals

| Item # | Size |
|----------|---------------------|
| 07212-00 | 12 - 32 oz. Bottles |

Pull®

Heavy Duty Toilet Bowl • Urinal Cleaner

Ready-To-Use



Formulated for restorative cleaning to work quickly.

- 23% hydrochloric acid to remove rust, scale and mineral deposits
- For use on inside of toilet bowls and urinals only
- Ideal for hard water applications

| Item # | Size |
|----------|---------------------|
| 07112-00 | 12 - 32 oz. Bottles |
| 07155-00 | 55 Gal. Drum |

Stix™

Toilet Bowl, Porcelain and Shower Tile Cleaner

Ready-To-Use



Quickly removes a variety of soils from restroom surfaces.

- Removes rust, mineral deposits and lime as well as soap scum, body oils and grease
- Mild acid won't damage common restroom surfaces
- Pleasant cherry almond fragrance
- For use on toilets, urinals, porcelain sinks and shower stalls

| Item # | Size |
|----------|---------------------|
| 07612-00 | 12 - 32 oz. Bottles |

Sure Bet™ II

One-Step Acid Cleaner, Disinfectant, Virucide, Mildewstat, and Deodorizer

Concentrate 1:32



Foaming action extends contact time for better cleaning and more effective disinfecting.

- Quickly removes soap scum, hard water deposits and other shower residues
- Defends against harmful germs while deodorizing
- For use on showers, bath tubs, porcelain fixtures and ceramic tile floors

| Item # | Size |
|----------|----------------------------|
| 31412-00 | 12 - 32 oz. Bottles |
| 31447-00 | 4 - 2 Liter FastDraw® |
| 31404-00 | 4 - 1 Gal. Bottles |
| 31405-00 | 5 Gal. Pail |
| 31455-00 | 55 Gal. Drum |
| 31447-07 | 4 - 2 Liter FastDraw® (CA) |
| 31404-07 | 4 - 1 Gal. Bottles (CA) |
| 31455-07 | 55 Gal. Drum (CA) |

RESTROOM - ACID FREE CLEANERS

Green Earth® RTU Restroom Cleaner

Non-Corrosive • Heavy Duty Restroom Cleaner

Ready-To-Use



Removes difficult, hard water stains and soap scum in all areas of the restroom.

- Contains organic acids, powerful cleaning agents that inhibit scaling and soil buildup
- Non-corrosive acid removes the toughest soap scum deposits
- Pleasant fresh mint fragrance
- For use on sinks, counters fixtures, tubs, floors, walls, glazed tile, and porcelain

| Item # | Size |
|----------|--------------------|
| 30912-00 | 6 - 32 oz. Bottles |



RESTROOM - ACID FREE CLEANERS

Green Earth® Restroom Cleaner

Concentrated • Non Corrosive • Heavy Duty Restroom Cleaner

Concentrate 1:20 - 1:64



Safely removes soap scum and hard water from restroom surfaces.

- Foaming action allows for longer contact time and maximum penetration of tough soils
- Pleasant, powerful fragrance
- For use in showers, bathtubs, and other restroom surfaces

| Item # | Size |
|----------|-----------------------|
| 54847-00 | 4 - 2 Liter FastDraw® |
| 54804-00 | 4 - 1 Gal. Bottles |
| 54855-00 | 55 Gal. Drum |

AF79

Acid Free Restroom Cleaner and Disinfectant

Ready-To-Use



Germicidal detergent disinfects, cleans, and deodorizes in one easy step.

- Clean and disinfects hard nonporous bathroom surfaces
- Pleasant citrus bouquet fragrance
- Quickly removes soap scum
- Non-scratch cleaning of showers, tubs, shower doors, fixtures, and toilet bowls

| Item # | Size |
|----------|--------------------|
| 07912-00 | 6 - 32 oz. Bottles |
| 07904-00 | 4 - 1 Gal. Bottles |
| 07955-00 | 55 Gal. Drum |

Rest Stop™

Value Priced Restroom Disinfectant

Ready-To-Use



Latest odor control technology delivers powerful fragrance cleaning ingredients and power boosters.

- Delivers non-acid disinfectant and cleaning performance, with a pleasant citrus bouquet fragrance
- Acid free, will not damage surfaces
- For use on toilets, urinals, sinks, counters, floors, showers, glazed ceramic tiles, and walls

| Item # | Size |
|----------|---------------------|
| 07012-00 | 12 - 32 oz. Bottles |
| 07004-00 | 4 - 1 Gal. Bottles |
| 07005-00 | 5 Gal. Pail |
| 07055-00 | 55 Gal. Drum |

AF79 Concentrate

Concentrated Acid-Free Bathroom Disinfectant

Concentrate 1:64 - 1:128



Offers excellent cleaning performance with outstanding value and economy.

- Effective against SARS-CoV-2 (COVID-19), VRE, MRSA, Staphylococcus aureus, Salmonella enterica, Pseudomonas aeruginosa, and HIV-1 (AIDS)
- Pleasant ocean breeze fragrance
- For use on counters, floors, ceramic tile, concrete, sinks, tables, toilets, trash cans, urinals and walls

| Item # | Size |
|----------|----------------------------|
| 33104-00 | 4 - 1 Gal. Bottles |
| 33147-00 | 4 - 2 Liter FastDraw® |
| 331B2-00 | 2 - 2 Liter FastDraw® |
| 33147-07 | 4 - 2 Liter FastDraw® (CA) |
| 33104-07 | 4 - 1 Gal. Bottles (CA) |

Forest 5

Foaming • Cleaner • Deodorant

Ready-To-Use



Powerful clinging foam action allows for maximum contact time.

- Pleasant mint fragrance
- Versatile all-purpose cleaner
- Excellent for soap scum removal in shower areas
- For use on bathtubs, counters, floors, walls, hampers, showers, sinks and trash cans

| Item # | Size |
|----------|---------------------|
| 30712-00 | 12 - 32 oz. Bottles |
| 30755-00 | 55 Gal. Drum |

Best Bet™

Liquid Creme Cleanser

Ready-To-Use



Contains jeweler's grade abrasive to clean thoroughly without scratching surface.

- Thick clinging formula is ideal for vertical surfaces
- Penetrates, scours, brightens, and polishes without heavy agitation
- Fresh mint fragrance
- For use on bathtubs, chrome, metal, porcelain, sinks, stainless steel, tile, toilets, urinals, and walls

| Item # | Size |
|----------|---------------------|
| 07712-00 | 12 - 32 oz. Bottles |
| 07755-00 | 55 Gal. Drum |

BTB

Instant Mildew Stain Remover • Bathroom Cleaner

Ready-To-Use



Instantly whitens counters, fiberglass, grout, showers, sinks, tiles, tubs and vinyl.

- Instantly removes tough mildew stains
- Increases the level of cleanliness in the shower rooms, locker rooms, and other restroom area
- Pleasant fragrance

| Item # | Size |
|----------|---------------------|
| 32112-00 | 12 - 32 oz. Bottles |

RESTROOM - OTHER

Anti-Splash Urinal Screen

Fragranced • Enzyme Powered • Anti-Splash Urinal Screens

Ready-To-Use



Reduce the spread of germs by avoiding splash back.

- Patented technology allows for effective fragrance release
- Enzyme-powered technology prevents malodors
- 100% recyclable, VOC compliant
- Flexible, designed to fit any urinal and prevent debris

| Item # | Size |
|----------|-----------------------------|
| 987D7-00 | 60 - Screens (Ocean Breeze) |
| 988D7-00 | 60 - Screens (Citrus) |
| 989D7-00 | 60 - Screens (Lavender) |

SmartScreen®

Urinal Screen with Built in Probiotic Puck

Ready-To-Use



Urinal screens with built-in pucks featuring probiotic technology and long-lasting scent.

- Eliminates malodors and reduces drain line build-up
- Biodegradable agents and non-pathogenic bacteria produce enzymes designed to target and break down uric and water scale
- Puck components chemically bond to malodors, rendering them odorless and non-toxic

| Item # | Size |
|----------|-----------------------------|
| 28672-00 | 72 - Screens (Ocean Breeze) |
| 28772-00 | 72 - Screens (Citrus) |

Urinal Puck Blue DSL

Probiotic Urinal Puck

Ready-To-Use



Contains probiotics capable of degrading uric acid and degrading odors naturally.

- Preventative maintenance tool - controls scale build-up
- Works in all types of urinals or troughs
- Cleans and freshens
- Prevents blockages in traps and pipes

| Item # | Size |
|------------|--------------------|
| Z603RP1-00 | 50 - 50 Gram Pucks |

Wild Berry Malodor Counteractant

Powdered Portable Toilet Malodor Counteractant

Ready-To-Use



Concentrated, non-formaldehyde powder combining probiotic waste digesters with powerful odor control and fragrance.

- Convenient pre-measured, quick-dissolve water-soluble pouches
- Eliminates odors instead of covering them up
- For use in portable toilets and RV, bus, boat, and camper black water tanks

| Item # | Size |
|------------|---------------------|
| Z700P15-00 | 800 - 1 oz. Pouches |

Barrier Fluid

Oil-Based Malodor Blocking Liquid

Ready-To-Use



Malodor prevention fluid for use in urinals or floor drains.

- Reduces odor and enhances the restroom experience
- Pleasant, long-lasting fragrance
- For use in water free urinals and floor drains

| Item # | Size |
|----------|--------------------|
| 29170-00 | 6 - 32 oz. Bottles |

CONCENTRATED DISINFECTANTS

AF315

Disinfectant • Deodorant • Cleaner

Concentrate 1:26



Provides long lasting freshness against tough odors.

- Disinfectant kills pseudomonas, salmonella, and staph
- Cleans, disinfects, and deodorizes in one step
- Kills HIV-1 (AIDS) on precleaned environmental surfaces/objects
- Neutral pH will not attack floor finish

| Item # | Size |
|----------|-----------------------|
| 31512-00 | 12 - 32 oz. Bottles |
| 31547-00 | 4 - 2 Liter FastDraw® |
| 31504-00 | 4 - 1 Gal. Bottles |
| 31505-00 | 5 Gal. Pail |
| 31555-00 | 55 Gal. Drum |

pH7Q Dual

Neutral pH Disinfectant • Detergent • Deodorant

Concentrate 1:256



Neutral pH cleaner, disinfectant and deodorizer.

- Disinfects, cleans, and deodorizes in one labor-saving step
- Kills SARS-CoV-2 (COVID-19), HIV-1 (AIDS virus), Influenza A, Hepatitis B, VRE and MRSA on pre-cleaned environmental surfaces
- For use on floors, chairs, bathroom fixtures, desks, counters and stainless steel

| Item # | Size |
|----------|-----------------------|
| 35547-00 | 4 - 2 Liter FastDraw® |
| 35504-00 | 4 - 1 Gal. Bottles |
| 35555-00 | 55 Gal. Drum |

Daily Disinfectant Dual

Neutral pH Disinfectant • Detergent • Deodorant

Concentrate 1:256



Economical ultra concentrate provides low end-use cost.

- Disinfects, cleans, and deodorizes in one labor saving step
- Kills SARS-CoV-2 (COVID-19), HIV-1 (AIDS virus), Influenza A, Listeria, VRE and MRSA on pre-cleaned environmental surfaces
- Economical ultra concentrate provides low end-use cost
- Perfect for damp mopping highly polished floors
- For use on floors, walls, toilets, sinks, glazed porcelain and plastic

| Item # | Size |
|----------|----------------------------|
| 35504-07 | 4 - 1 Gal. Bottles (CA) |
| 35547-07 | 4 - 2 Liter FastDraw® (CA) |

pH7Q

Neutral pH Disinfectant • Detergent • Deodorant

Concentrate 1:64



Neutral pH cleaner disinfectant and deodorizer.

- Disinfects, cleans, and deodorizes in one labor saving step
- Kills SARS-CoV-2 (COVID-19), HIV-1 (AIDS virus), Influenza A, Hepatitis B, VRE and MRSA on pre-cleaned environmental surfaces
- For use on floors, walls, toilets, sinks, glazed porcelain and plastic

| Item # | Size |
|----------|-----------------------|
| 31604-00 | 4 - 1 Gal. Bottles |
| 31647-00 | 4 - 2 Liter FastDraw® |
| 31605-00 | 5 Gal. Pail |
| 31655-00 | 55 Gal. Drum |

Quat-Stat™ 5

One-Step Disinfectant • Cleaner

Concentrate 1:256



A heavy duty disinfectant that cleans disinfects and deodorize.

- Can be used through an auto scrubber without dulling gloss
- Effective against a broad spectrum of bacteria, is virucidal including SARS-CoV-2 (COVID-19), HIV-1 (AIDS virus), Hepatitis B and C and is fungicidal
- Approved for use in electrostatic sprayers

| Item # | Size |
|----------|--------------------------|
| 34148-00 | 6 - 32 oz. Dosing Bottle |
| 34147-00 | 4 - 2 Liter FastDraw® |
| 34104-00 | 4 - 1 Gal. Bottles |
| 34155-00 | 55 Gal. Drum |

Triforce

One-Step Disinfectant • Bactericidal • Fungicidal • Virucidal*

Concentrate 1:256



3 minute broad spectrum hard surface disinfectant and soft surface sanitizer.

- Efficacy against SARS-CoV-2 (COVID-19) Staphylococcus, Klebsiella Pneumoniae, HIV, Hepatitis B & C, Influenza
- Approved for use in electrostatic sprayers
- Added benefit of soft surface sanitization
- Formulated to reduce cross-contamination on treated surfaces

| Item # | Size |
|----------|-----------------------|
| 33347-00 | 4 - 2 Liter FastDraw® |
| 33304-00 | 4 - 1 Gal. Bottles |

VersiFect™

Disinfectant, Virucide, Cleaner and Deodorizer

Concentrate 1:64



Effective against SARS-Related Coronavirus (SARS-CoV-2) in 1 minute.

- Economical concentrate that can be used with a mop and bucket, trigger sprayers or sponge
- Kills Pseudomonas aeruginosa, Staphylococcus aureus (MRSA), CA-MRSA, HBV
- Hospital disinfectant and kills HIV-1 (AIDS virus) and Influenza A
- This product saves, time, labor and cost.

| Item # | Size |
|-----------|-----------------------|
| 382047-00 | 4 - 2 Liter FastDraw® |
| 382004-00 | 4 - 1 Gal. Bottles |
| 382005-00 | 5 Gal. Pail |
| 382055-00 | 55 Gal. Drum |

CONCENTRATED DISINFECTANTS

Pine Quat

Pine Cleaner Disinfectant • Deodorant

Concentrate 1:32



One-step cleaner serves as fungicide in the presence of organic soils.

- Neutral pH, no harsh alkali, will not attack floor finish
- Simple to use with pleasant pine fragrance
- Deodorizes surfaces restrooms, locker rooms and exercise facilities
- For use on floors, countertops, desks, walls, shower stalls, tubs, toilets, sinks, laminate, stainless steel, glazed porcelain and plastic

| Item # | Size |
|----------|--------------------|
| 30470-00 | 6 - 32 oz. Bottles |
| 30404-00 | 4 - 1 Gal. Bottles |
| 30405-00 | 5 Gal. Pail |
| 30455-00 | 55 Gal. Drum |

READY-TO-USE DISINFECTANTS

Fight-Bac™ RTU

Broad Spectrum Disinfectant • Cleaner

Ready-To-Use



Use on hard non-porous surfaces in hospitals, nursing homes, schools, office buildings and lodging establishments.

- Kills 99.9% of bacteria when used according to disinfection directions
- Cuts tough grease and grime and will not scratch or bleach surfaces
- Kills SARS-CoV-2 virus on hard non-porous surfaces

| Item # | Size |
|----------|--------------------------|
| 31112-00 | 12 - 32 oz. Bottles |
| 31104-00 | 4 - 1 Gal. Bottles |
| 31155-00 | 55 Gal. Drum |
| 31112-07 | 12 - 32 oz. Bottles (CA) |
| 31104-07 | 4 - 1 Gal. Bottles (CA) |
| 31155-07 | 55 Gal. Drum (CA) |

GE Fight-Bac™ RTU

Disinfectant • Cleaner • Virucide • Fungicide

Ready-To-Use



One step, no rinse cleaner and disinfectant formulated with a botanical citric acid.

- Demonstrates efficacy against pathogens like SARS-CoV-2 (COVID-19)
- Can be used as a food contact sanitizer with no rinsing or wiping required
- Suitable for use on hard and/or soft surfaces
- For use on desks, countertops, kitchen surfaces, restrooms, stainless steel

| Item # | Size |
|----------|---------------------|
| 39012-00 | 12 - 32 oz. Bottles |
| 39004-00 | 4 - 1 Gal. Bottles |
| 39005-00 | 5 Gal. Pail |
| 39055-00 | 55 Gal. Drum |
| 39027-00 | 275 Gal. Tote |

GE Fight-Bac™ Wipes

Disinfectant • Cleaner • Virucide • Fungicide

Ready-To-Use



Free from harsh chemicals and formulated with citric acid, a botanical active ingredient.

- Demonstrates efficacy against pathogens like SARS-CoV-2 (COVID-19)
- Hospital grade efficacy
- Environmentally friendly, no harsh fumes for the user
- Requires no PPE

| Item # | Size |
|----------|----------------------------|
| 392F1-00 | 500 - 5.5" x 7" Sheet |
| 392F5-00 | 1500 - 11" x 7" Sheet |
| 392F1-07 | 500 - 5.5" x 7" Sheet (CA) |
| 392F5-07 | 1500 - 11" x 7" Sheet (CA) |

Glybet™ III

Disinfectant • Deodorant Tuberculocidal • Virucide • Fungicide

Ready-To-Use



Disinfectant for use in restrooms and on hard surfaces.

- Serves as a fungicide against pathogenic fungi, mold, and mildew
- Kills odor-causing bacteria at the source
- Kills Influenza A and B virus, VRE, MRSA, salmonella, and pseudomonas
- Tuberculocidal hospital-grade disinfectant

| Item # | Size |
|-----------|----------------------------|
| 108623-00 | 12 - 15.5 oz. Aerosol Cans |

Cide-Bet II

Hospital Disinfectant Foaming Germicidal Cleaner • Citrus Bouquet

Ready-To-Use



Hospital-grade disinfectant cleans without scouring or scratching.

- Dispenses a clinging foam for vertical surfaces
- Virucidal against AIDS virus and Herpes Simplex 1 & 2
- Deodorizes with pleasant scent, eliminating all malodors at the source

| Item # | Size |
|----------|--------------------------|
| 08723-00 | 12 - 19 oz. Aerosol Cans |



Bloodborne Pathogen Standard Compliance

The United States Department of Labor, Occupational Health and Safety Administration (OSHA) recognizes EPA registered disinfectants which are tuberculocidal or are EPA registered as efficacious against both the Hepatitis B virus and the HIV-1 (AIDS Virus) as meeting the requirements of the OSHA Bloodborne Pathogen Standard for decontamination of work surfaces.

AIR CARE

Best Scent™ Ocean Breeze
Air Freshener

Ready-To-Use / Concentrate 1:10 - 1:256



Immediately defeats lingering odors, freshening the treated area with a pleasant aroma.

- Use on airborne odors, floors, carpets, trash containers
- Fresh ocean breeze scent
- Versatile, use in any deodorizing application
- Available in ready-to use or concentrated

| Item # | Size |
|----------|--------------------------------|
| 23147-00 | 4 - 2 Liter FastDraw® |
| 23104-00 | 4 - 1 Gal. Bottles |
| 23155-00 | 55 Gal. Drum |
| 23512-00 | 12 - 32 oz. Bottles (RTU) |
| 02423-00 | 12 - 16 oz. Aerosol Cans (RTU) |

Best Scent™ Lemon Zest
Air Freshener

Ready-To-Use / Concentrate 1:10 - 1:256



Immediately defeats lingering odors, freshening the treated area with a pleasant aroma.

- Use on airborne odors, floors, carpets, trash containers
- Fresh lemon zest scent
- Versatile, use in any deodorizing application
- Available in ready-to-use or concentrate

| Item # | Size |
|----------|---------------------------|
| 22647-00 | 4 - 2 Liter FastDraw® |
| 22604-00 | 4 - 1 Gal. Bottles |
| 22655-00 | 55 Gal. Drum |
| 23312-00 | 12 - 32 oz. Bottles (RTU) |

Best Scent™ Smoke & Odor
Odor Neutralizer

Ready-To-Use



Contains odor counteractant technology to eliminate smoke and burnt malodors, not just cover them up.

- For use on airborne odors, floors, carpets and trash containers
- Versatile, use in any deodorizing application.
- Spring renewal scent

| Item # | Size |
|----------|--------------------------|
| 23404-00 | 4 - 1 Gal. Bottles |
| 23455-00 | 55 Gal. Drum |
| 23412-00 | 12 - 32 oz. Bottles |
| 06223-00 | 12 - 16 oz. Aerosol Cans |

SenTec® Mountain Meadow
Odor Eliminator Technology

Ready-To-Use / Concentrate 1:10 - 1:256



Scientifically formulated to completely eliminate odors instead of covering them up.

- Unique malodor counteractant technology eliminates odors
- SenTec® traps and removes odors from the air

| Item # | Size |
|-----------|--------------------------|
| 4125B2-00 | 2 - 2 Liter FastDraw® |
| 412504-00 | 4 - 1 Gal. Bottles |
| 402570-00 | 6 - 32 oz. Bottles (RTU) |

SenTec® Pure Linen
Odor Eliminator Technology

Ready-To-Use / Concentrate 1:10 - 1:256



Scientifically formulated to completely eliminate odors instead of covering them up.

- Unique malodor counteractant technology eliminates odors
- SenTec® traps and removes odors from the air

| Item # | Size |
|-----------|--------------------------|
| 4130B2-00 | 2 - 2 Liter FastDraw® |
| 413004-00 | 4 - 1 Gal. Bottles |
| 403070-00 | 6 - 32 oz. Bottles (RTU) |

Odor Control Metered Aerosol Dispenser
Continuous Deodorizing Dispenser for Restrooms



Metered aerosol dispenser system that provides excellent malodor elimination.

- Installs in 2 minutes, requires 2 c-cell batteries
- Improves restroom experience by eliminating malodors
- Fragrance options include Best Scent™ Ocean Breeze, SenTec® Pure Linen, and SenTec® Mountain Meadow

| Item # | Size |
|----------|------------------------|
| 91753-00 | 6 - Metered Dispensers |

Best Scent™ / ScenTec® Metered Aerosols
Air Freshener for use with Odor Control Metered Aerosol Dispenser

Ready-To-Use



Metered aerosol that provide excellent malodor elimination.

- For use with Metered Dispenser System
- Low VOC formulation

| Item # | Size |
|-----------|--|
| 02583-00 | 6 - 7 oz. Aerosol Cans (Ocean Breeze) |
| 442583-00 | 6 - 7 oz. Aerosol Cans (Mountain Meadow) |
| 443083-00 | 6 - 7 oz. Aerosol Cans (Pure Linen) |





SYMPPLICITY™

Premium products and programs are uniquely designed to deliver one-wash clean performance

No-contact SureConnect dispensing offers performance, safety, environmental, and cost-saving benefits

Experts provide support materials and continuous training to keep operations running smoothly



Food Service & Warewash Solutions

Clean, Safe, and Simple Innovation

A full streamlined offering of cleaning products and dispensing equipment covers all front- and back-of-house needs while reducing inventory costs and simplifying the reordering process. Many products have low environmental impact and feature SureConnect—an easy-to-use, color-coded, closed loop dispensing system that eliminates waste and employee guesswork.



MANUAL POT & PAN DETERGENT

Symplicity™ In-Sync

Ultra Concentrated Manual Pot & Pan Detergent

Concentrate - 1 - 2 oz. per 10 gallons



Ultra-concentrated hand dishwashing detergent.

- Formulated to take on the leading blue brand
- Ideal for cleaning heavily encrusted pots and pans and has the power to cut through the toughest grease
- Specifically designed for supermarket, institutional and restaurant use where fast grease emulsification and lasting suds are a must
- Great for dispensing

| Item # | Size |
|-----------|-----------------------|
| 185147-00 | 4 - 2 Liter FastDraw® |
| 185104-00 | 4 - 1 Gal. Bottles |
| 185105-00 | 5 Gal. Pail |
| 185125-00 | 2.5 - Gal. BIB |
| 1851B9-00 | 8 - 38 oz. Bottles |
| 185155-00 | 55 Gal. Drum |

Symplicity™ Citrusuds™

Lemon Scented Pot & Pan Detergent

Concentrate - .4 oz. per gallon



Lemon scented manual dishwashing detergent.

- Ideal for cleaning pots, pans, and dishes
- Works quickly and leaves surfaces spot and film-free
- Effective on grease and fat but mild on the hands

| Item # | Size |
|-----------|-----------------------|
| 210947-00 | 4 - 2 Liter FastDraw® |
| 210904-00 | 4 - 1 Gal. Bottles |
| 210905-00 | 5 Gal. Pail |

Symplicity™ Envy

Premium Pot & Pan Detergent

Concentrate - 1 - 2 oz. per 10 gallons



A rich ultra-concentrated dish detergent.

- Formulated to take on the leading green brand
- Provides a powerful, grease fighting clean while remaining gentle on hands
- Delivers a mountain of suds with every drop for an ultimate clean and shine

| Item # | Size |
|-----------|-------------|
| 211905-00 | 5 Gal. Pail |

Symplicity™ Tilly®

Hand Dishwashing Detergent

Concentrate - 1 oz. per gallon



Lotionized, pH neutral pink hand dishwashing detergent.

- Gentle on the hands in industrial, institutional, and restaurant applications
- Quickly cuts through baked-on food and grease deposits
- Provides long lasting, stable suds
- Pleasant fragrance

| Item # | Size |
|----------|--------------------|
| 11004-00 | 4 - 1 Gal. Bottles |
| 11005-00 | 5 Gal. Pail |

Symplicity™ Fresh Suds

Hand Dishwashing Detergent

Concentrate - 1 oz. per 3 gallons



Economical hand dishwashing detergent.

- Economical dishwashing detergent specially designed for industrial, institutional and restaurant use
- Rinses freely - This product provides stable suds yet never streaks

| Item # | Size |
|-----------|--------------------|
| 210204-00 | 4 - 1 Gal. Bottles |
| 210205-00 | 5 Gal. Pail |

Symplicity™ Green Earth® Pot & Pan Detergent

Premium 100% Active Solid Pot & Pan Detergent

Concentrate



Non-phosphate manual detergent rapidly penetrates and suspends difficult food soils.

- Low environmental impact, low VOCs, no phosphorus, APEs, or NPEs
- Compact and convenient size with molded jar handle for quick change out
- Rich, long-lasting suds

| Item # | Size |
|----------|-----------------|
| 25671-00 | 2 - 5 Pint Jars |

SANITIZERS

Symlicity™ Sanibet™ Multi-Range
Sanitizer • Disinfectant • Cleaner

Concentrate 1:512



To sanitize mobile and immobile items such as drinking glasses and eating utensils, tanks, chopping blocks and countertops.

- Kills Listeria, E-Coli, Salmonella
- No rinse required when used as directed as a sanitizer
- Concentrated for economical use
- Effective in hard water

| Item # | Size | Item # | Size |
|----------|-----------------------|----------|----------------------------|
| 23704-00 | 4 - 1 Gal. Bottles | 23704-07 | 4 - 1 Gal. Bottles (CA) |
| 23725-00 | 2.5 Gal. Bag in Box | 23725-07 | 2.5 Gal. Bag in Box (CA) |
| 23705-00 | 5 Gal. Pail | 23705-07 | 5 Gal. Pail (CA) |
| 23747-00 | 4 - 2 Liter FastDraw® | 23747-07 | 4 - 2 Liter FastDraw® (CA) |
| 23755-00 | 55 Gal. Drum | | |

Sanibet™ RTU
Cleaner • Sanitizer • Deodorizer

Ready-To-Use



This product is an effective sanitizer/cleaner for use on food contact surfaces.

- Use in restaurants, bars, kitchens, and meat and poultry plants
- No need to rinse, air dry
- Convenient ready-to-use spray bottle

| Item # | Size |
|----------|---------------------|
| 34212-00 | 12 - 32 oz. Bottles |

CLEANERS / DEGREASERS

Citrus Chisel
Natural Citrus Cleaner • Degreaser

Concentrate 1:20 - 1:100



Performs practically any cleaning tasks from factory to kitchen.

- May be diluted up to 1:100 for great economy
- Superior performance with natural citrus solvents
- For use on cement, concrete, equipment, floors, machinery, motors and tools
- Deodorizes as it cleans with a pleasant citrus fragrance

| Item # | Size |
|----------|-----------------------|
| 16712-00 | 12 - 32 oz. Bottles |
| 16747-00 | 4 - 2 Liter FastDraw® |
| 16704-00 | 4 - 1 Gal. Bottles |
| 16705-00 | 5 Gal. Pail |
| 16755-00 | 55 Gal. Drum |
| 16727-00 | 275 Gal. Tote |

Oven Jell
Oven • Grill and Range Hood Cleaner

Ready-To-Use



Gel formula clings to surfaces, quickly penetrating and removing baked and burnt-on deposits.

- Breaks chemical bond between soil and oven, releasing deposits
- Non-fuming, non-flammable
- For use on deep fat fryers, electric burners, frying pans, ovens, range hoods, and stove burners

| Item # | Size |
|----------|---------------------|
| 13912-00 | 12 - 32 oz. Bottles |
| 13904-00 | 4 - 1 Gal. Bottles |
| 13955-00 | 55 Gal. Drum |

Oven and Grill Cleaner
Aerosol Oven and Grill Cleaner

Ready-To-Use



Versatile, can be used in hot or cold ovens.

- Gel formulation clings and cleans
- Self-scouring, penetrates grease/carbon instantly
- Lemon scent, pleasant and convenient to use
- For use on griddles, ovens and grills, rotisseries and stove burners

| Item # | Size |
|----------|--------------------------|
| 05523-00 | 12 - 19 oz. Aerosol Cans |

No-Rinse Floor Cleaner
Probiotic No-Rinse Multi-Surface Floor Cleaner

Concentrate 1:64



Proprietary blend of surfactants and non-pathogenic probiotics for immediate and extended cleaning.

- Ideal for food service environments, targets starches and fats
- Continues cleaning even after floor is dry
- Economical concentration for low end use cost
- No rinse formula saves time and labor

| Item # | Size |
|----------|-----------------------|
| 25847-00 | 4 - 2 Liter FastDraw® |
| 25804-00 | 4 - 1 Gal. Bottles |
| 25805-00 | 5 Gal. Pail |
| 25877-00 | 15 Gal. Drum |
| 25827-00 | 275 Gal. Tote |



CLEANERS / DEGREASERS

Spray Foam

Heavy Duty Foaming Degreaser

Concentrate 1:20



Clinging formula allows easy cleaning of vertical surfaces.

- Quickly emulsifies and removes animal fats, grease and vegetable oils
- Leaves hard surfaces such as floors, walls, and equipment odorless and film-free
- For use in supermarkets, food processing plants and other food service environments

| Item # | Size |
|----------|--------------------|
| 12604-00 | 4 - 1 Gal. Bottles |
| 12605-00 | 5 Gal. Pail |
| 12655-00 | 55 Gal. Drum |
| 12627-00 | 275 Gal. Tote |

Spray Foam Ultra

Heavy Duty Foaming Degreaser

Concentrate 1:256



Non-caustic, non-corrosive, clinging foam allows easy cleaning of vertical surfaces.

- Concentrated yet effective formula for maximum efficiency
- Free rinsing, no residue and very low foam
- Quickly emulsifies/removes animal fat, grease, vegetable oil, blood and fatty soils
- For use in supermarkets, food processing plants and other food service environments

| Item # | Size |
|----------|-----------------------|
| 18647-00 | 4 - 2 Liter FastDraw® |
| 18604-00 | 4 - 1 Gal. Bottles |

MAD

Mild Acid Detergent

Concentrate 1:15 - 1:64



For use on chrome, floors, showers, sinks, stainless steel, tubs, tile, grout and walls.

- Concentrated for effective end-use dilutions
- Removes rust, lime and scale from hard non-porous surfaces
- Removes salt residues and neutralizes floors after intense strip jobs

| Item # | Size |
|----------|--------------------|
| 13504-00 | 4 - 1 Gal. Bottles |
| 13555-00 | 55 Gal. Drum |

HD High Foam Chlorinated Degreaser

High Foaming Chlorinated Degreaser

Concentrate 1:20



Thick, rich, clinging foam, ideal for CIP (clean in place) applications.

- High caustic formula removes the toughest fats, oils, grease and blood stains
- Sodium hypochlorite whitens discolored areas
- Non-butyl, no perfume or dyes
- For use on food processing floors, walls and equipment

| Item # | Size |
|----------|--------------------|
| 54004-00 | 4 - 1 Gal. Bottles |
| 54005-00 | 5 Gal. Pail |
| 54055-00 | 55 Gal. Drum |
| 54027-00 | 275 Gal. Tote |

HD Low Foam CIP Chlorinated Degreaser

Low Foaming Chlorinated Degreaser for CIP (Clean in Place) Cleaning

Concentrate 1:20



Very low foam, ideal for CIP applications.

- High caustic formula removes the toughest fats, oils, grease and blood stains
- Sodium hypochlorite whitens discolored areas.
- Non-butyl, no perfume or dyes
- For use on food processing floors, walls and equipment

| Item # | Size |
|----------|--------------------|
| 53004-00 | 4 - 1 Gal. Bottles |
| 53055-00 | 55 Gal. Drum |

Citrus Kitchen Degreaser

Citrus Cleaner • Degreaser

Concentrate 1:6 - 1:32



Superior cleaning performance with natural citrus solvents.

- Citrus solvents and surfactants emulsify fats, oils, and greases from kitchen floors and surfaces
- Great deodorizer
- Highly economical concentration for versatility and low end use cost
- Performs well in hot, cold, hard, or soft water

| Item # | Size |
|-----------|--------------------|
| 113104-00 | 4 - 1 Gal. Bottles |

Kitchen Degreaser

Cleaner and Degreaser

Concentrate 1:6 - 1:32



A heavy duty degreaser specifically formulated to instantly dissolve greasy, oily soils found in commercial kitchens.

- Works well in hot, cold, hard or soft waters
- Ultra-concentrated product offers true economy and unbeatable performance
- Versatile, use for everything from light to heavy duty cleaning

| Item # | Size |
|-----------|--------------------|
| 101204-00 | 4 - 1 Gal. Bottles |
| 101205-00 | 5 Gal. Pail |
| 101255-00 | 55 Gal. Drum |

CLEANERS / DEGREASERS

Oven / Fryer / Grill Cleaner
Ready-To-Use Cleaner

Ready-To-Use

| Item # | Size |
|-----------|--------------------|
| 100104-00 | 4 - 1 Gal. Bottles |



Breaks chemical bond of baked-on deposits, releasing them from oven surface.

- Quickly penetrates and releases soils
- Non-fuming with fresh fragrance
- Versatile, for use on ovens, grills, and range hoods

Drain and Trap Treatment

Drain and Grease Trap Cleaner and Maintainer

Ready-To-Use

| Item # | Size |
|-----------|---------------------|
| 260012-00 | 12 - 32 oz. Bottles |
| 260004-00 | 4 - 1 Gal. Bottles |
| 260005-00 | 5 Gal. Pail |



Probiotics work to degrade grease and fatty acids, keeping drain lines clear.

- Proprietary nutrients reduce production of harmful odor-inducing bacteria
- Neutral formula doesn't contain caustics or acids
- Won't damage pipes or traps

Garbage Disposal Cleaner

Foaming Probiotic Garbage Disposal Cleaner and Freshener

Ready-To-Use

| Item # | Size |
|------------|--------------------|
| 2605P57-00 | 30 - 2 oz. Pouches |



Foaming probiotic cleaner and freshener for all types of garbage disposals.

- Water-soluble packaging for simple dosing and application
- Helps prevent downstream clogging
- Powerful formula effective at degrading buildup in restaurant disposals
- Leaves kitchen sinks clean and running smoothly

Drain Treatment Neem

Drain Treatment for Beverage Machines

Ready-To-Use

| Item # | Size |
|------------|---------------------|
| Z321C12-00 | 400 - 16 Gram Pucks |



Formulated with probiotics to treat the drain lines and drain tray of beverage dispensing machines.

- Preventative maintenance tool, helps control build-up in tray, lines, drain
- Cleans and freshens
- Helps prevent formation of sugar snakes
- Mitigates fruit flies by digesting their food source

Grease Trap and Drain Cleaner

Grease Trap and Drain Cleaner Blocks

Ready-To-Use

| Item # | Size |
|------------|---------------------|
| Z320C14-00 | 64 - 226 Gram Pucks |



Releases beneficial probiotics into the drain or grease trap to digest FOG and maintain clean, free-flowing systems.

- Extended release block for continuous treatment eliminates the cost of daily or weekly treatments.
- Saves money by reducing the frequency of manual cleanouts, preventing blockages, and lowering grease disposal costs
- Reduces malodors associated with organic waste and sludge

Dumpster Treatment

Dumpster Cleaner and Odor Eliminator

Concentrate 1:20

| Item # | Size |
|-----------|---------------------|
| 260912-00 | 12 - 32 oz. Bottles |
| 260904-00 | 4 - 1 Gal. Bottles |
| 260905-00 | 5 Gal. Pail |



Triple odor control, fragrance, malodor counteractant and probiotic bacteria fight odors long after initial application.

- Rich clinging foam for extended cleaning and odor control
- Use on any dumpster, trash receptacles, trash chutes and loading docks
- Use with Betco Foam Gun for maximum performance

WAREWASHING

Symlicity™ Blaze Machine Detergent
Machine Detergent Concentrate

Concentrate

| Item # | Size |
|----------|-----------------|
| 23973-00 | 4 - 5 Pint Jars |



Extra strength solid machine detergent for one-pass clean dishes, crystal clear glassware, and spotless silverware.

- Solid, economical concentrate saves money
- Compact size for simple storage
- No waste, all product evacuates from capsule
- Prevents misuse, product can only be used in chemical management systems
- Molded jar handle for quick change out

WAREWASHING

Symplicity™ Blaze NP Machine Detergent
Non-Phosphate Machine Detergent

Concentrate

| Item # | Size |
|----------|-----------------|
| 93273-00 | 4 - 5 Pint Jars |



Phosphate-free solid machine detergent removes heavy food soils in wide range of conditions.

- Solid, economical concentrate saves money
- Low environmental impact, low VOCs and no APEs, NPEs, or EDTAs
- Versatile, works in high and low temp dish machines

Symplicity™ Krystal Solid Rinse Aid
Solid Machine Rinse Aid

Concentrate

| Item # | Size |
|----------|----------------|
| 268A3-00 | 1 - 5 Pint Jar |



Boasts excellent sheeting and quick drying.

- Ultra low foaming formula controls wash tank foam
- No waste, all product is evacuated from capsule
- Economical, 100% active product
- For use in high or low temps, hard or soft water

Symplicity™ Green Earth® Machine Detergent
Machine Detergent Concentrate

Concentrate

| Item # | Size |
|----------|-----------------|
| 24073-00 | 4 - 5 Pint Jars |



Metal-safe, phosphate-free solid machine detergent.

- Solid, economical concentrate saves money
- Low environmental impact with low VOCs and no APEs, NPEs, or EDTAs
- Compact solid size ensures ease of storage and handling
- Performs well in high and low temp dish machines

Symplicity™ All Temp Machine Detergent
Concentrated All Temperature Machine Detergent

Concentrate

| Item # | Size |
|----------|--------------------|
| 24474-00 | 4 - 1 Gal. Bottles |
| 24478-00 | 5 Gal. Pail |
| 24477-00 | 15 Gal. Drum |
| 24455-00 | 55 Gal. Drum |



Non-chlorinated, all-temp machine detergent for excellent soil most water conditions.

- Economical liquid concentrate saves money
- Effective in hard water
- SureConnect system enhances safety and ensures no contact, no spills
- Free rinsing, improved performance
- For use in both high or low temp machines

Symplicity™ Metal Safe Detergent
Concentrated All Temp Machine Detergent

Concentrate

| Item # | Size |
|-----------|--------------------|
| 244974-00 | 4 - 1 Gal. Bottles |
| 244978-00 | 5 Gal. Pail |
| 244977-00 | 15 Gal. Drum |
| 244955-00 | 55 Gal. Drum |



Formulated to clean the toughest soils and prevent corrosion on aluminum, copper, pewter, brass and other soft metals.

- Hard water tolerant, improved performance in all water conditions
- All temp, use in both high or low temp machines
- SureConnect, no contact, no spills, enhances safety and more
- Liquid concentrate, economical, saves money

Symplicity™ All Temp Rinse Aid
Dish Machine All Temperature Rinse Aid

Concentrate

| Item # | Size |
|----------|--------------------|
| 24574-00 | 4 - 1 Gal. Bottles |
| 24578-00 | 5 Gal. Pail |



Concentrated rinse additive delivers rapid sheeting for spot free drying in both low and high temperature dishmachines.

- Controls foaming, improved performance
- Hard water effective, improved performance
- SureConnect, no contact, no spills, enhances safety and more
- Accelerates drying, labor saving, increased productivity
- Liquid concentrate, economical, saves money

Symplicity™ Machine Rinse Aid
Dish Machine Rinse Aid

Concentrate

| Item # | Size |
|----------|--------------------|
| 26174-00 | 4 - 1 Gal. Bottles |
| 26178-00 | 5 Gal. Pail |



All-temp, low-foaming dish machine rinse aid.

- Designed specifically for low and high temp applications
- Provides quick drying and excellent sheeting action in soft water
- SureConnect system enhances safety and ensures no contact, no spills



WAREWASHING

Symlicity™ Chlorinated Machine Detergent
Stain Fighting Detergent

Concentrate

| Item # | Size |
|----------|--------------|
| 24178-00 | 5 Gal. Pail |
| 24155-00 | 55 Gal. Drum |



Premium chlorinated high temp machine detergent for superior performance and optimal stain removal in most water conditions.

- Economical liquid concentrate saves money
- Improved performance in all water conditions, including hard water
- Chlorine additive eliminates coffee and tea stains
- SureConnect enhances safety while ensuring no contact, no spills
- Free rinsing, improves rinsing performance

Symlicity™ High Temp Rinse Aid
Premium Rinse Aid

Concentrate

| Item # | Size |
|----------|-------------|
| 24278-00 | 5 Gal. Pail |



Premium concentrated rinse additive increases dish room productivity with unparalleled sheeting action leaving dishware and utensils spotless.

- Economical liquid concentrate saves money
- Eliminates rewash and accelerates drying, saves labor
- Effective in hard water
- Low foam formula increases machine efficiency
- SureConnect system enhances safety while ensuring no contact, no spills

Symlicity™ TDS Rinse Aid
Concentrated Liquid Rinse Aid

Concentrate

| Item # | Size |
|----------|-------------|
| 24378-00 | 5 Gal. Pail |



Premium rinse aid formulated for hard water and high total dissolved solid water conditions.

- Economical liquid concentrate saves money
- Prevents spotting, eliminates rewash
- Formulated for accelerated drying, saves labor
- Low foam formula increases machine efficiency
- Low environmental impact with low VOCs and no phosphorus, APES, NPES, or EDTAs

Symlicity™ Low Temp Machine Sanitizer 215
EPA Registered Machine Sanitizer

Concentrate

| Item # | Size |
|----------|--------------------|
| 24674-00 | 4 - 1 Gal. Bottles |
| 24678-00 | 5 Gal. Pail |
| 24678-07 | 5 Gal. Pail (CA) |



Chlorinated sanitizer for use for use with low temp, low energy machines.

- Active chlorine eliminates coffee and tea stains, attacks protein soils
- EPA registered with proven effectiveness
- Economical liquid concentrate saves money
- SureConnect system enhances safety and ensures no contact, no spills
- For use on stainless steel, glass, china, porcelain, and plastic

Symlicity™ Pinnacle Presoak
Concentrated Flatware Presoak with Enzymes

Concentrate

| Item # | Size |
|----------|-----------------|
| 24771-00 | 2 - 5 Pint Jars |



Solid, dual active enzyme pre-soak penetrates hardened food soils and de-tarnishes silverware.

- Enzymes quickly remove difficult stains
- Economical liquid concentrate saves money
- Spotless one-pass washing reduces rewash
- Compact solid offers convenient size and easy handling

Flatware Presoak
Concentrated Liquid Presoak & Brightener

Concentrate 1 to 2 oz. per gallon

| Item # | Size |
|-----------|--------------------|
| 259904-00 | 4 - 1 Gal. Bottles |



Effective double-duty presoak softens food soils on flatware prior to machine processing.

- Brightens and shines stainless ware
- Spotless one-pass washing reduces rewash
- Economical liquid concentrate saves money
- Fast-acting, saves labor

Symlicity™ Oxy Destainer Powder
Oxygen Stain Remover

Concentrate 1 to 2 oz. per gallon

| Item # | Size |
|-----------|------------------|
| 2450G9-00 | 2 - 8 Pound Jars |



An oxygen releasing compound formulated to remove stains from china and plasticware.

- Reduces rewash, spotless one pass washing
- May be used as a presoaking solution prior to machine or manual dishwashing
- Effective on tea, coffee, cola and food soil stains
- Also an effective stain remover and deodorizer for laundry and hard surface cleaning

WAREWASHING

Symlicity™ L-S-R Delimer Dish Machine Descaler

Concentrate 2 to 4 oz. per gallon



Premium acid-based lime scale remover/delimer with saffrafras fragrance.

- Versatile, descales a variety of equipment
- Low foaming formula improves performance
- Economical concentrate saves money
- Fast-acting, saves labor

| Item # | Size |
|----------|--------------------|
| 24804-00 | 4 - 1 Gal. Bottles |
| 24855-00 | 55 Gal. Drum |

Symlicity™ Betco® Bar Glass Detergent Low Foam Bar Glass Detergent

Concentrate 1 oz per 10 gallons



Low foam bar glass detergent removes stubborn lipstick and other soils.

- Will not affect beer head
- Effective cleaning
- Economical liquid concentrate saves money
- Low foaming formula improves performance
- Improved rinsing performance

| Item # | Size |
|----------|--------------------|
| 25704-00 | 4 - 1 Gal. Bottles |

DISPENSERS

Spray and Foam Dispenser

Spray and Foam Dispenser that Degreases and Sanitizes



For cleaning and sanitizing of meat rooms, food service/prep areas, processing/packaging areas, or anywhere large surface cleaning is needed.

- Convenient dial rotates to wash, rinse, and sanitize operations
- Knob eliminates user mistakes and safeguards against inaccurate dilutions
- Comes complete with 25 ft. hose, spray gun, and foam wand
- Durable stainless steel construction

| Item # | Size |
|----------|---------------|
| 92364-00 | 1 - Dispenser |

Symlicity™ Sink Station

Three Compartment Sink Food Service Dispenser



Mounts directly above sinks and conveniently dispenses detergent and sanitizer in food service setting.

- Levers ensure correct dilution
- Intended for use with Betco's superior detergents and sanitizers
- Use dilution dial, no metering tips

| Item # | Size |
|----------|-------------------------------|
| 91639-00 | 1 - Sink Station I Dispenser |
| 91640-00 | 1 - Sink Station II Dispenser |

Drain Station Dispenser

AC or DC Drain Station



Automatically dispenses drain maintainer to keep drains clean and prevent clogged drains due to fats, oils, and greases.

- Simple to program and operate
- Dispenses from gallon bottles, 5 gallon pails, or 55 gallon drum
- Operates via AC or DC power

| Item # | Size |
|----------|------------------|
| 91686-00 | 1 - AC Dispenser |
| 91687-00 | 1 - DC Dispenser |

Dumpster Spray System

Automatic Dumpster Spray System



Automatically treat dumpsters throughout the day with simple digital programming.

- Intuitive and simple digital programming
- AC Power -plugs into any wall outlet
- Water resistant and durable ABS enclosure
- Adjustable brass nozzle from coarse spray to wide mist
- Runs on peristaltic pump - chemical can be placed in any convenient location

| Item # | Size |
|----------|---------------------------|
| 90273-00 | 1 - Dumpster Spray System |

Foam Gun

Foam Gun for Dumpster Treatment



Produces a thick rich foam for extended contact time on vertical surfaces.

- No need to manually dilute, metering tips make sure you get the right dilution
- Use in conjunction with Dumpster Treatment for cleaning and deodorizing dumpsters and other trash receptacles
- Convenient small size and lightweight gun

| Item # | Size |
|----------|--------------|
| 98474-00 | 1 - Foam Gun |





SYMPLICITY™

Save money, time, and water with superior products and programs that provide one-pass cleaning

Dispense concentrated products accurately without risk of chemical contact/spills using SureConnect

Value added training resources, assessment tools, and expert field support ensure smooth operations



Laundry Solutions

Clean, Safe, and Simple Innovation

Betco formulas aim to provide the lowest end-use cost, meet or exceed sustainability guidelines, and—coupled with our diverse dispensers—form a comprehensive but efficient line for reduced inventory and simplified reordering. Many products also feature SureConnect—an easy-to-use, color-coded, closed loop dispensing system to alleviate waste and guesswork.



BREAKS

Symplicity™ Break Alkaline Builder

Concentrate



Contains anti-redeposition agents that prevent graying and dulling.

- Economical liquid concentrate saves money
- Improves detergent performance
- Performs well in hard water
- SureConnect system enhances safety and ensures no contact, no spills

| Item # | Size |
|----------|--------------|
| 47078-00 | 5 Gal. Pail |
| 47077-00 | 15 Gal. Drum |
| 47055-00 | 55 Gal. Drum |

Symplicity™ Break Ultra Super Concentrated Laundry Break

Concentrate



Ultra-concentrated alkaline builder breaks "soil to linen" bond.

- Formulated to work synergistically with Detergent Ultra in the break/suds cycle
- Enhanced with wash water conditioners, it improves detergent performance delivering one wash clean results
- SureConnect system enhances safety and ensures no contact, no spills
- Recommended for use on all fabrics except for wool and silk

| Item # | Size |
|----------|--------------|
| 49478-00 | 5 Gal. Pail |
| 49477-00 | 15 Gal. Drum |
| 49455-00 | 55 Gal. Drum |

DETERGENTS

Symplicity™ Emulsifier Emulsifying Detergent

Concentrate



Concentrated heavy duty detergent with emulsifying solvents for enhanced performance on difficult grease and oil soils.

- Economical liquid concentrate saves money
- Effective for cleaning table linens and polyesters
- Effective in both warm and hot water
- SureConnect system enhances safety and ensures no contact, no spills
- Contains natural solvents, will not harm environment or linen

| Item # | Size |
|----------|--------------|
| 47378-00 | 5 Gal. Pail |
| 47377-00 | 15 Gal. Drum |

Symplicity™ Built Detergent High Performance Built Detergent

Concentrate



Ultra-concentrated detergent with alkaline base prevents graying or dulling.

- "One shot" product eliminates need for break
- Effective in a variety of water conditions
- Economical concentration saves money
- SureConnect system enhances safety and ensures no contact, no spills

| Item # | Size |
|----------|--------------|
| 49278-00 | 5 Gal. Pail |
| 49277-00 | 15 Gal. Drum |
| 49255-00 | 55 Gal. Drum |

Symplicity™ Detergent High Performance Detergent

Concentrate



Concentrated, high performance detergent with brightening agents and springtime fresh fragrance.

- Prevents graying and dulling
- Can be used with or without a break
- Suitable for all temperatures
- Economical concentration saves money
- SureConnect system enhances safety and ensures no contact, no spills

| Item # | Size |
|----------|--------------------|
| 47174-00 | 4 - 1 Gal. Bottles |
| 47178-00 | 5 Gal. Pail |
| 47177-00 | 15 Gal. Drum |
| 47155-00 | 55 Gal. Drum |

Symplicity™ Detergent Ultra Super-Concentrated Laundry Detergent

Concentrate



Super concentrated high performance detergent removes difficult soils quickly.

- Super concentrated non-built detergent to be used synergistically for improved performance with Symplicity Break Ultra in the break/suds cycle
- Breaks the "soil to linen" bond
- Economical concentration
- SureConnect system enhances safety and ensures no contact, no spills

| Item # | Size |
|----------|--------------|
| 49678-00 | 5 Gal. Pail |
| 49677-00 | 15 Gal. Drum |
| 49655-00 | 55 Gal. Drum |

DETERGENTS

Symplicity™ Dye Free Fragrance Free Detergent

High Performance Detergent

Concentrate



Same great cleaning performance as Betco's detergent but without dyes and fragrance that cause allergies and sensitivities in some customers.

- Prevents graying and dulling
- Suitable for all temperatures
- Economical concentration saves money
- SureConnect system enhances safety and ensures no contact, no spills

| Item # | Size |
|----------|--------------|
| 49878-00 | 5 Gal. Pail |
| 49877-00 | 15 Gal. Drum |

Symplicity™ Duet - OPL

Detergent with Enzymes

Concentrate



Non-built detergent with enzymes.

- Concentrated synthetic detergent with powerful surfactants, soil devouring enzymes, and anti-redeposition agents
- Delivers one wash clean at a low end use cost
- Designed for use without the need for an alkaline break or an acid sour
- Safe on all water washable fabrics in hot or cold water

| Item # | Size |
|----------|--------------|
| 49578-00 | 5 Gal. Pail |
| 49577-00 | 15 Gal. Drum |
| 49555-00 | 55 Gal. Drum |

Symplicity™ Duet-S

High Performance Detergent

Concentrate



100% active solid one-shot laundry detergent with enzymes and color-safe bleach.

- Cleans/brightens linens, even in cold water
- Low environmental impact with low VOCs and no phosphorus, APes, NPes, or EDTAs
- Economical concentrate saves money
- Molded jar handle for quick change out

| Item # | Size |
|----------|-----------------|
| 47471-00 | 2 - 5 Pint Jars |

Duet-L with Bleach Alternative

Liquid All Fabric Laundry Detergent with Color Safe Bleach & Enzymes

Concentrate



Super concentrated high performance detergent removes difficult soils quickly.

- Easy-to-use, single liquid product
- Cleans/brightens linens even in cold water
- Chlorine scavenger extends life of colored linen
- Low environmental impact with low VOCs and no phosphorus, APes, NPes, or EDTAs

| Item # | Size |
|----------|--------------------|
| 47504-00 | 4 - 1 Gal. Bottles |
| 47505-00 | 5 Gal. Pail |
| 47577-00 | 15 Gal. Drum |
| 47555-00 | 55 Gal. Drum |

DESTAINERS

Symplicity™ Destainer

Chlorine Destainer

Concentrate



Concentrated laundry destainer for use on whites and colorfast linens.

- Excellent labor-saving destaining power
- Brightens linen and extends useful life
- Economical concentration with optimum bleaching
- SureConnect system enhances safety and ensures no contact, no spills

| Item # | Size |
|----------|--------------------|
| 47774-00 | 4 - 1 Gal. Bottles |
| 47778-00 | 5 Gal. Pail |
| 47777-00 | 15 Gal. Drum |
| 47755-00 | 55 Gal. Drum |

Symplicity™ Color Safe Destainer

Concentrated Color Safe Destainer

Concentrate



Concentrated laundry destainer for use on all fabric types including colored fabrics.

- No chlorine, safe on colors
- Promotes longer fabric life
- Brightens linen with minimized reclaim
- Economical liquid concentration
- SureConnect system enhances safety and ensures no contact, no spills

| Item # | Size |
|----------|--------------------|
| 47874-00 | 4 - 1 Gal. Bottles |
| 47878-00 | 5 Gal. Pail |
| 47877-00 | 15 Gal. Drum |
| 47855-00 | 55 Gal. Drum |

SOURS & SOFTENERS

Symplicity™ Sour Laundry Neutralizer

Concentrate



Highly concentrated laundry sour for neutralizing alkalinity and controlling iron stains.

- Controls pH, eliminating skin irritation
- Neutralizes alkaline residues, extending linen life
- Prevents graying and yellowing stains
- Economical concentration saves money
- SureConnect system enhances safety and ensures no contact, no spills

| Item # | Size |
|----------|--------------|
| 48178-00 | 5 Gal. Pail |
| 48177-00 | 15 Gal. Drum |
| 48155-00 | 55 Gal. Drum |

Symplicity™ Sour Ultra Super-Concentrated Laundry Sour

Concentrate



Ultra-concentrated fabric neutralizer optimized for iron inhibition.

- Eliminates graying caused by iron in the water supply
- Restores pH balance, reducing risk of skin irritation
- Economical concentration
- SureConnect system enhances safety and ensures no contact, no spills

| Item # | Size |
|----------|--------------------|
| 49774-00 | 4 - 1 Gal. Bottles |
| 49778-00 | 5 Gal. Pail |
| 49777-00 | 15 Gal. Drum |
| 49755-00 | 55 Gal. Drum |

Symplicity™ Sour & Softener Neutralizer and Fabric Softener

Concentrate



Concentrated liquid laundry sour and softener combination product in springtime fresh fragrance.

- Reduces static electricity and wrinkling
- Restores pH balance and reduces risk of skin irritation
- Dual action product reduces inventory and training
- Economical concentration
- SureConnect system enhances safety and ensures no contact, no spills

| Item # | Size |
|----------|--------------------|
| 48374-00 | 4 - 1 Gal. Bottles |
| 48378-00 | 5 Gal. Pail |
| 48377-00 | 15 Gal. Drum |
| 48355-00 | 55 Gal. Drum |

Symplicity™ Softener Fabric Softener

Concentrate



Concentrated liquid fabric softener enhances operational efficiency in springtime fresh fragrance.

- Reduces static electricity and wrinkling
- Speeds up drying time, saves time and energy
- Economical concentration saves money
- SureConnect system enhances safety and ensures no contact, no spills

| Item # | Size |
|----------|--------------|
| 48278-00 | 5 Gal. Pail |
| 48277-00 | 15 Gal. Drum |

Symplicity™ Sanitizing Softener 550 Softener Sanitizer

Concentrate



Fabric softener concentrate reduces the number of odor-causing bacteria from wet contamination.

- Residual self-sanitizing activity
- Softens clothes, eliminates chafing
- Reduces static electricity and wrinkling
- Economical concentration saves money
- SureConnect system enhances safety and ensures no contact, no spills

| Item # | Size |
|----------|--------------|
| 47978-00 | 5 Gal. Pail |
| 47977-00 | 15 Gal. Drum |
| 47955-00 | 55 Gal. Drum |

PREWASH / STAIN REMOVERS

Symlicity™ PRO G
Healthcare Prewash

Ready-To-Use

| Item # | Size |
|----------|----------------------------------|
| 48816-00 | 6 - 32 oz. Bottles w/ 3 Triggers |



Targeted RTU spray for healthcare associated stain treatment.

- Designed for healthcare specific stains
- Effective on a variety of soils
- Reduces rewash
- Fast-acting, saves labor

Symlicity™ PRO S

Solvent Prewash for Broad Spectrum Organic Soils

Ready-To-Use

| Item # | Size |
|----------|----------------------------------|
| 48916-00 | 6 - 32 oz. Bottles w/ 3 Triggers |



Designed for organic stains, including oils and grease.

- Reduces rewash, labor saving
- Fast-acting
- Versatile, effective on a variety of soils including shoe polish, oil based cosmetics, crayon, marker, shop grease, and tar
- Convenient, ready-to-use packaging

Symlicity™ PRO A

Prewash for Broad Spectrum Organic Stains

Ready-To-Use

| Item # | Size |
|----------|----------------------------------|
| 49016-00 | 6 - 32 oz. Bottles w/ 3 Triggers |



Broad spectrum RTU enzyme spray for organic stain treatment.

- Designed for a broad spectrum of stains including grass, food, and more
- Reduces rewash, labor saving
- Fast-acting
- Convenient, ready-to-use packaging

Symlicity™ PRO R

Prewash for Rust and Metallic Stains

Ready-To-Use

| Item # | Size |
|----------|----------------------------------|
| 49116-00 | 6 - 32 oz. Bottles w/ 3 Triggers |



Spray for rust, tannin and metallic stain treatment.

- Designed for rust and tannin stains
- Reduces rewash, labor saving
- Versatile, effective on a variety of soils
- Fast-acting
- Convenient ready-to-use packaging

RECLAIMS

Symlicity™ Reclaim C
Reclaim Powder for Color Linens

Ready-To-Use

| Item # | Size |
|----------|------------------|
| 48679-00 | 6 - 2 Pound Jars |



Formulated with water conditioners, high-alkaline salts, and colorsafe bleaching agents.

- Restores linen, preserves investment
- Economical powder concentrate saves money
- Treats a variety of soils and stains
- Pre-measured and easy to use

Symlicity™ Reclaim W

Reclaim Powder for White Linens

Ready-To-Use

| Item # | Size |
|----------|------------------|
| 48579-00 | 6 - 2 Pound Jars |



A blend of water conditioners, alkaline salts, and chlorine that removes deeply embedded stains.

- Restores linen, preserves investment
- Economical powder concentrate saves money
- Treats a variety of soils and stains
- Pre-measured and easy to use

Symlicity™ Reclaim R

Reclaim Powder for Rust and Tannin Linens

Ready-To-Use

| Item # | Size |
|----------|------------------|
| 48779-00 | 6 - 2 Pound Jars |



Reclaim powder for linen discolored from iron and alkali.

- Formulated with iron inhibiting organic acids
- Restores linen, preserves investment
- Economical powder concentration saves money
- Treats a variety of soils and stains
- Pre-measured and easy to use



Eliminate guesswork to accurately dilute chemical for greater time efficiency and cost savings up to 30%

Enhance cleaning staff safety by reducing the potential for accidental chemical contact and spills

A variety of 30+ high-performing cleaning and maintenance solutions meet a wide range of facility needs



Dilution Control Solutions

The Most Innovative, Simple, and Versatile Systems

Single or multiple product, wall mounted or portable, water access or not, Betco has a dilution control system that is right for you. Our flagship program, FastDraw® offers diverse dispensers to fill spray bottles, mop buckets, and automatic scrubbers and perform foaming spray applications, as well as spill-proof, number/color-coded bottles with built-in metering inserts.



CHEMICAL MANAGEMENT

FastDraw® Freedom Portable Dispensing System

| Item # | Size |
|----------|-----------------|
| 91290-00 | 12 - Dispensers |



No wall space, no problem! One versatile system does it all.

- Fills spray bottles with little to no foam
- Sprays a clinging foam for extended contact on vertical surfaces.
- Fills buckets/autoscrubbers quickly and easily
- Hassle free operation, hook up the hose and turn the dial to choose the application
- Small, lightweight design for easy transportation

FastDraw® 1 One Product Chemical Management Dispenser

| Item # | Size |
|----------|--------------------------|
| 91043-00 | 1 - Action Gap Dispenser |
| 91069-00 | 1 - Air Gap Dispenser |



Small dispenser can be used virtually anywhere.

- Extremely easy to install and simple to change or replace product
- Instantly primes, when disengaged product drains back into container, no cross-contamination
- Numbered/color coded for simplified use/training
- Choose bottle or bucket fill options with the flick of a lever

FastDraw® Pro 4 Product Locking Chemical Management System

| Item # | Size |
|----------|--------------------------|
| 92682-00 | 1 - Action Gap Dispenser |
| 92698-00 | 1 - Air Gap Dispenser |



The most durable, versatile and simple 4 bay locking chemical management system on the market.

- Locking doors to prevent tampering or theft
- Space saving design, mounts to either a flat wall or in a corner
- Dispenses into both spray bottles and mop buckets/automatic scrubbers.
- Durable polypropylene construction, suitable for the toughest cleaning environments
- Bottle and bucket fill from each bay, simple one-hand bottle fill

FastDraw® Foamer II Foaming Dispenser

| Item # | Size |
|----------|---------------|
| 92216-00 | 1 - Dispenser |



Excellent thick, clinging foam ideal for vertical surface cleaning.

- For use in large shower areas, food processing plants, walk-in coolers and other foaming applications
- Locks for continuous foaming action
- Conveniently transports on cleaning carts
- Easily screws onto FastDraw bottle
- Surecomfort™ handle

FastDose™ Chemical Management System

| Item # | Product Name | Size |
|-----------|-----------------------|------------------------------|
| 15048-00 | Top Flite™ | 6 - 32 oz. FastDose™ Bottles |
| 17848-00 | pH7 Ultra | 6 - 32 oz. FastDose™ Bottles |
| 18148-00 | Deep Blue Concentrate | 6 - 32 oz. FastDose™ Bottles |
| 18848-00 | Daily Scrub SC | 6 - 32 oz. FastDose™ Bottles |
| 34148-00 | Quat-Stat™ 5 | 6 - 32 oz. FastDose™ Bottles |
| 168348-00 | Reinforce | 6 - 32 oz. FastDose™ Bottles |



Ideal for portable dilution control.

- Simplified chemical management without a dispenser
- Small, convenient containers are perfect for portable operations
- Economical dilutions as high as 1/8 oz. per gallon (1:1024) for extremely low cost
- Perfect for retail settings, convenience stores, and contract cleaning uses

Green Earth® II 1 Button Dispenser

| Item # | Size |
|----------|---------------|
| 91162-00 | 1 - Dispenser |



Simple low cost dispenser for one product use.

- Dilutes and dispenses one product into buckets or automatic scrubbers
- Economical, lowest cost dispenser
- Small size, uses very little wall space

Green Earth® II 4 x 4 Multi-Product Dispenser

| Item # | Size |
|----------|---------------|
| 92720-00 | 1 - Dispenser |



Convenient Multi-Product Dispenser.

- Dispenses up to eight products from one dispenser
- Simple and convenient one hand bottle fill
- Gas pump style hose for hands free filling

CHEMICAL MANAGEMENT

Quarterpack

Chemical Management System



No wall space, no problem. Quarterpack is designed to use quart bottles that are formulated so one quart bottle can be added to a 5 gallon container, then filled with water.

- Sturdy rack holds up to four products
- May be used with bottles, mop buckets or autoscrubbers
- Economical design, simple and convenient to use

| Item # | Size |
|----------|------------------------|
| 90099-00 | 1 - Quarterpack Rack |
| 90100-00 | 1 - 5 Gallon Container |

FastPak™

Mobile Dilution Control Kit



Combines professional, concentrated cleaners and disinfectants, with safe, precise dosing to enhance cleanliness, lower costs and simplify your operations.

- Simple, easy-to-use, no training required, no complicated equipment
- Precise, easily measure 1/4 to 3 oz. with accurate results every time
- Safe, reduce unnecessary spills or splash risks
- Value, savings with concentrates and eliminates overdosing

| Item # | Size |
|------------|-------------------------------|
| 92535F6-00 | 32 oz. Bottles w/Proportioner |
| 92531-00 | 1 - Proportioner |

SoliChem™ Grease Solv

Solid Industrial Degreaser



Rivals traditional degreasers with the added benefit of probiotics that aide in digesting organic material, creating fewer issues downstream.

- High count non-pathogenic probiotics for better cleaning
- Probiotic package that targets petroleum soils and other industrial organics
- For use only with Betco® GeneSys™ Scrubbers
- Use in industrial floor cleaning and degreasing
- Up to 80% lower cost versus traditional liquids
- 350 gallons of solution per solid

| Item # | Size |
|----------|---------------------|
| 821E3-00 | 4 - 575 Gram Solids |

SoliChem™ pH7 Ultra

Solid Neutral Floor Cleaner



High-performance daily, neutral floor cleaner that will keep floors looking brighter and cleaner, every day.

- Controlled foam, for use only with Betco® GeneSys™ mid size scrubbers
- Neutral pH, won't attack, haze, dull floor gloss or leave a film
- Dissolves and removes a wide variety of soils, leaving floors film free
- Up to 80% lower cost versus traditional liquids
- 350 gallons of solution per solid

| Item # | Size |
|----------|---------------------|
| 819E3-00 | 4 - 575 Gram Solids |

Fortify™ Foam Control

Concentrated Solid Antifoam Puck



Quickly penetrates and knocks down foam to eliminate problems associated with recovery tank foaming.

- Fast acting, breaks foam on contact
- Saves time, eliminates downtime and wasted effort in dumping recovery tanks
- Versatile, can be used in Betco's GeneSys™ scrubber series and put into the debris tray of other auto scrubber tanks

| Item # | Size |
|----------|--------------------|
| 820E3-00 | 4 - 275 Gram Pucks |

SoliChem™ Combo Pack - Grease Solv

Solid Industrial Degreaser & Fortify™ Foam Control



Pack combines Grease Solv solids and Fortify™ Foam Control Pucks.

- Probiotic Grease Solv formula rivals traditional degreasers
- Pucks quickly penetrate and knock down foam
- For use with Betco® GeneSys™ walk-behind scrubbers

| Item # | Size |
|------------|---|
| 92493E4-00 | 4 - 575 Gram Solids 4 - 275 Gram Pucks |

SoliChem™ Combo Pack - pH7 Ultra

Solid Neutral Floor Cleaner & Fortify™ Foam Control



Pack combines pH7 Ultra solids and Fortify™ Foam Control Pucks.

- pH7 Ultra formula keeps floors looking brighter and cleaner
- Pucks quickly penetrate and knock down foam
- For use with Betco® GeneSys™ walk-behind scrubbers

| Item # | Size |
|------------|---|
| 92686E4-00 | 4 - 575 Gram Solids 4 - 275 Gram Pucks |



PRODUCT SELECTION GUIDE

| PRODUCT NAME | FASTDRAW® | FASTDOSE™ | FASTPAK™ | QUARTERPACK | SOLICHEM™ | INFO |
|--|-----------|-----------|----------|-------------|-----------|--------|
| FLOOR CARE | | | | | | |
| Betco® One Step | ✓ | | | | | pg. 10 |
| Game Time Cleaner | ✓ | | | | | pg. 15 |
| Extreme® Ultra | ✓ | | | ✓ | | pg. 8 |
| Crete Rx™ Densiclean™ | ✓ | | | | | pg. 11 |
| STG Cleaner | ✓ | | | | | pg. 9 |
| FiberPRO® Es-Steam™ | ✓ | | | | | pg. 14 |
| Reinforce | ✓ | ✓ | | | | pg. 9 |
| Daily Scrub SC | ✓ | ✓ | | | | pg. 10 |
| Green Earth® Daily Floor Cleaner | ✓ | | | | | pg. 9 |
| No-Rinse Floor Cleaner | ✓ | | | | | pg. 32 |
| GENERAL CLEANING | | | | | | |
| Deep Blue | ✓ | ✓ | | ✓ | | pg. 19 |
| Clear Image | ✓ | | ✓ | | | pg. 19 |
| Green Earth® Glass Cleaner | ✓ | | | | | pg. 19 |
| Top Flite™ | ✓ | ✓ | ✓ | ✓ | | pg. 18 |
| Spectaculo™ | ✓ | | ✓ | | | pg. 18 |
| pH7 Ultra | ✓ | ✓ | ✓ | | ✓ | pg. 10 |
| Green Earth® Peroxide Cleaner | ✓ | | | | | pg. 18 |
| Push® Classic Mint | ✓ | | | | | pg. 18 |
| Green Earth® Natural All Purpose Cleaner | ✓ | | | | | pg. 19 |
| RESTROOM | | | | | | |
| AF79 Concentrate | ✓ | | | ✓ | | pg. 25 |
| Sure Bet™ II | ✓ | | | | | pg. 24 |
| Green Earth® Restroom Cleaner | ✓ | | | | | pg. 25 |

PRODUCT SELECTION GUIDE

| PRODUCT NAME | FASTDRAW® | FASTDOSE™ | FASTPAK™ | QUARTERPACK | SOLICHEM™ | INFO |
|----------------------------------|-----------|-----------|----------|-------------|-----------|--------|
| DISINFECTANTS | | | | | | |
| AF315 | ✓ | | | ✓ | | pg. 27 |
| pH7Q | ✓ | | | | | pg. 27 |
| pH7Q Dual | ✓ | | | | | pg. 27 |
| Quat-Stat™ 5 | ✓ | ✓ | | | | pg. 27 |
| Triforce | ✓ | | | | | pg. 27 |
| Versifect™ | ✓ | | | | | pg. 27 |
| Pine Quat | | | ✓ | | | pg. 28 |
| Daily Disinfectant Dual | ✓ | | | | | pg. 27 |
| FOOD SERVICE | | | | | | |
| Spray Foam Ultra | ✓ | | | | | pg. 33 |
| Symplicity™ Sanibet™ Multi-Range | ✓ | | | | | pg. 32 |
| Symplicity™ In-Sync | ✓ | | | | | pg. 31 |
| Symplicity™ Citrusuds™ | ✓ | | | | | pg. 31 |
| DEODORIZERS | | | | | | |
| SenTec® Mountain Meadow | ✓ | | | | | pg. 29 |
| SenTec® Pure Linen | ✓ | | | | | pg. 29 |
| Best Scent™ Ocean Breeze | ✓ | | | | | pg. 29 |
| Best Scent™ Lemon Zest | ✓ | | | | | pg. 29 |
| INDUSTRIAL | | | | | | |
| Citrus Chisel | ✓ | | | ✓ | | pg. 21 |
| Speedex Concentrate | ✓ | | | | | pg. 21 |
| Green Earth® Velocity® | ✓ | | | | | pg. 21 |
| Green Earth® Natural Degreaser | ✓ | | | | | pg. 21 |
| Grease Solv Degreaser | | | | | ✓ | pg. 22 |



Wide selection of world-class foaming and lotion/gel cleanser and sanitizer formulas and fragrances

Choose between top-of-the-line dispensing systems or small countertop and high-volume bulk solutions

Training resources ensure successful implementation of a complete hand hygiene program



Hand Hygiene Solutions

Format That Best Serves Your Facility's Needs

Your one partner in hand hygiene, we have a comprehensive line for a healthy environment in any facility. Clario is the most versatile, cost-effective program for institutional dispensing, Triton sets a new value in heavy-duty and large-quantity industrial dispensing, and we even have you covered with bulk/countertop options for convenient deployment anywhere.



FOAMING SKIN CLEANSERS

Green Earth™ Clear Foaming Skin Cleanser

Dye Free and Fragrance Free Foaming Skin Cleanser



Cleans hands without impacting the skin, will not cause dryness or skin irritation, encourages frequent hand washing.

- Dye free and fragrance free
- Gentle and mild to hands, will not cause dryness or irritation
- Encourages frequent hand washing

| Item # | Size |
|----------|-------------------------|
| 71504-00 | 4 - 1 Gal. Bottles |
| 71529-00 | 6 - 1000 mL Clario Bags |

Green Earth™ Foaming Skin Cleanser

Luxurious Foaming Skin Cleanser



Foaming skin cleanser with emollients.

- Gentle and mild to hands, will not cause dryness or irritation
- Has a very light, pleasant scent
- Encourages frequent hand washing

| Item # | Size |
|----------|-------------------------|
| 78104-00 | 4 - 1 Gal. Bottles |
| 78129-00 | 6 - 1000 mL Clario Bags |

Pink Foaming Skin Cleanser

Mildly Fragranced Foaming Skin Cleanser



Ultra mild and gentle to hands.

- Emollients moisturize skin, encouraging frequent hand washing
- Cleans light to medium soils
- Mild scent

| Item # | Size |
|----------|--------------------------|
| 75004-00 | 4 - 1 Gal. Bottles |
| 75029-00 | 6 - 1000 mL Clario Bags |
| 750E9-00 | 12 - 500 mL Pump Bottles |
| 75055-00 | 55 Gal. Drum |

E2 Antibacterial Foaming Skin Cleanser

Dye, Fragrance and Triclosan Free Foaming Cleanser



E2 rated antibacterial foaming skin cleanser for food service and healthcare applications.

- Dye free and fragrance free
- Preferred skin cleanser for the food service industry
- Clean rinsing, leaving hands without dryness, stickiness, or residue

| Item # | Size |
|----------|-------------------------|
| 71704-00 | 4 - 1 Gal. Bottles |
| 71729-00 | 6 - 1000 mL Clario Bags |
| 71755-00 | 55 Gal. Drum |

Foaming Antibacterial Skin Cleanser

Foaming Skin Cleanser



Aloe enriched, antibacterial foaming skin cleanser.

- Contains 0.25 benzalkonium chloride for effective broad spectrum germ kill
- Cleans and moisturizers, will not cause dryness or skin irritation
- Quick-acting antibacterial foam soap for general hand washing

| Item # | Size |
|----------|------------------------------|
| 75104-00 | 4 - 1 Gal. Bottles |
| 75129-00 | 6 - 1000 mL Clario Bags |
| 75129-07 | 6 - 1000 mL Clario Bags (CA) |
| 75155-00 | 55 Gal. Drum |

UltraBlue™ Antibacterial Foaming Skin Cleanser

Luxury Foam Antibacterial Skin Cleanser



Ultra thick foam helps prevent the spread of infection and encourages frequent hand washing.

- Ideal for healthcare facilities
- Contains benzalkonium chloride for effective broad spectrum germ kill
- For skin care use in daycare, hospitals, nursing homes, physician offices, dental offices and clinics

| Item # | Size |
|----------|--------------------------|
| 75904-00 | 4 - 1 Gal. Bottles |
| 75929-00 | 6 - 1000 mL Clario Bags |
| 759E9-00 | 12 - 500 mL Pump Bottles |

LOTION SKIN CLEANSERS

Green Earth™ Lotion Skin Cleanser

Moisturizing Lotion Skin Cleanser



Luxurious lotion skin cleanser.

- Gentle to hands, cleans light to medium soils
- Contains moisturizers, will not cause dryness or irritation
- Fresh and clean fragrance

| Item # | Size |
|----------|-------------------------|
| 78329-00 | 6 - 1000 mL Clario Bags |
| 78304-00 | 4 - 1 Gal. Bottles |

LOTION SKIN CLEANSERS

Pink Lotion Skin Cleanser

Pearlized Skin Cleanser with Emollients



pH balanced ultra mild lotion skin cleanser formulated with emollients.

- Ultra mild lotion soap gentle moisturizes the skin while protecting skin health
- Clean rinsing and non-irritating
- Refreshing scent for a pleasant hand wash

| Item # | Size |
|----------|----------------------------|
| 11219-00 | 12 - 900 mL Bag in Box |
| 11229-00 | 6 - 1000 mL Clario Bags |
| 11204-00 | 4 - 1 Gal. Bottles |
| 11262-00 | 6 - 2 Liter Triton Bottles |
| 11255-00 | 55 Gal. Drum |
| 11262-00 | 6 - 2 Liter Triton Bottles |

Antibacterial Lotion Skin Cleanser

Pearlized Antibacterial Skin Cleanser with Chloroxylenol (PCMX)



Gentle on the skin, will not cause dryness or irritation.

- Contains PCMX to help reduce microorganisms on the skin
- Formulated with moisturizers, will not cause dryness or skin irritation
- Tropical hibiscus scent encourages frequent hand washing

| Item # | Size |
|----------|--------------------------|
| 14119-00 | 12 - 900 mL Bag in Box |
| 141E9-00 | 12 - 500 mL Pump Bottles |
| 14129-00 | 6 - 1000 mL Clario Bags |
| 14104-00 | 4 - 1 Gal. Bottles |
| 14155-00 | 55 Gal. Drum |

Pearlized White Lotion Skin Cleanser

Lotion Skin Cleanser with Emollients



Leaves hands soft and refreshed.

- pH balanced so it's non-drying and non-irritating
- Leaves no residue, hands feel clean and soft
- Gentle enough for frequent hand washing

| Item # | Size |
|----------|--------------------|
| 71904-00 | 4 - 1 Gal. Bottles |

HAND SANITIZERS

Alcohol Free Foaming Hand Sanitizer

Freshly Scented, Alcohol Free Foaming Hand Sanitizer



For alcohol restricted and non-flammable applications.

- For use when soap and water are not available
- Contains 0.13% benzalkonium chloride that kills most germs that can cause disease
- Leaves hands fresh with no sticky residue

| Item # | Size |
|----------|--------------------------|
| 752E9-00 | 12 - 500 mL Pump Bottles |
| 75229-00 | 6 - 1000 mL Clario Bags |
| 75204-00 | 4 - 1 Gal. Bottles |
| 75255-00 | 55 Gal. Drum |
| 75227-00 | 275 Gal. Tote |

Advanced Alcohol Foaming Hand Sanitizer

Ethanol Based Foaming Hand Sanitizer with Aloe



Kills 99.999% of most common germs in as little as 15 seconds.

- For use when soap and water are not available
- 70% ethyl alcohol reduces germs on hands
- Emollients moisturize the skin, will not cause dryness or irritation

| Item # | Size |
|----------|--------------------------|
| 795E9-00 | 12 - 500 mL Pump Bottles |
| 79529-00 | 6 - 1000 mL Clario Bags |
| 79504-00 | 4 - 1 Gal. Bottles |
| 79555-00 | 55 Gal. Drum |

E3 Alcohol Free Foaming Sanitizer

Fast Drying, Moisturizing Hand Sanitizer for Food Service



Alcohol free foaming sanitizer for use in all regulated food processing and food service environments.

- For use when soap and water are not available
- Contains 0.1% benzalkonium chloride
- Emollients moisturize the skin, will not cause dryness or irritation

| Item # | Size |
|----------|-------------------------|
| 77929-00 | 6 - 1000 mL Clario Bags |
| 77904-00 | 4 - 1 Gal. Bottles |
| 77955-00 | 55 Gal. Drum |

Advanced Alcohol Gel Sanitizer

Ethanol Based Gel Hand Sanitizer with Aloe



Fast drying, lightly fragranced gel sanitizer.

- Kills 99.999% of most common germs that can cause disease
- 70% ethyl alcohol evaporates quickly with no sticky residue
- Moisturizes and conditions skin

| Item # | Size |
|----------|------------------------------|
| 796E9-00 | 12 - 500 mL Pump Bottles |
| 79619-00 | 12 - 900 mL Bag in Box |
| 79629-00 | 6 - 1000 mL Clario Bags |
| 79629-07 | 6 - 1000 mL Clario Bags (CA) |
| 79604-00 | 4 - 1 Gal. Bottles |
| 79655-00 | 55 Gal. Drum |

INDUSTRIAL SKIN CLEANSERS

HD Orange Hand Cleaner

Heavy Duty Hand Cleaner with Citrus and Fine Pumice



Heavy duty skin cleanser, with citrus and pumice.

- Ideal for heavy duty industrial use
- Formulated with natural citrus and fine milled Aztec pumice for quick removal of grease and grime
- For skin care use in a variety of industrial settings including manufacturing, machine shops, maintenance areas and automotive shops

| Item # | Size |
|----------|----------------------------|
| 79262-00 | 6 - 2 Liter Triton Bottles |
| 79231-00 | 4 - 4 Liter Triton Bottles |
| 79244-00 | 4 - 1 Gal. Flat Top Disp. |
| 79255-00 | 55 Gal. Drum |

XHD Hand Cleaner

Extra Heavy Duty Hand Cleaner with Soy and Walnut Shell Scrubber



Heavy duty skin cleanser for removing heavy grease, carbon, tar and oil.

- Contains all natural, refined walnut shell scrubbing particles
- Contains conditioners to prevent drying and cracking
- For skin care use in a variety of industrial settings including manufacturing, machine shops, maintenance areas and automotive shops

| Item # | Size |
|----------|----------------------------|
| 79362-00 | 6 - 2 Liter Triton Bottles |
| 79331-00 | 4 - 4 Liter Triton Bottles |
| 79344-00 | 4 - 1 Gal. Flat Top Disp. |

BiCarbonX™ Premium Industrial Hand Cleaner

Premium Industrial Hand Cleaner and Conditioner, Timber Jack Scent



Offers a skin-conditioning experience the toughest workers deserve.

- Increases skin moisture while reducing absenteeism due to skin issues
- Natural deodorizers leaves a fresh, clean scent
- Has no negative downstream environmental effects

| Item # | Size |
|----------|----------------------------|
| 708G6-00 | 4 - 2 Liter Triton Bottles |
| 70831-00 | 4 - 4 Liter Triton Bottles |
| 70804-00 | 4 - 1 Gal. Bottles |

HAIR & BODY CLEANSERS

Foaming Hand, Hair and Body Shampoo

Vitamin E Enriched Hair and Body Shampoo



Thick, rich foam is gentle on the skin and hair, and will not cause dryness or irritation.

- Use almost 50% less liquid for each wash
- Cleans and moisturizes with a fresh, neutral scent
- For skin care use in a variety of public facilities including schools, daycare centers, health spas, locker rooms, hotels and resorts

| Item # | Size |
|----------|-------------------------|
| 75329-00 | 6 - 1000 mL Clario Bags |
| 75304-00 | 4 - 1 Gal. Bottles |
| 75355-00 | 55 Gal. Drum |

Lotion Hand, Hair and Body Shampoo

Pleasantly Scented Hair and Body Shampoo



Designed to leave hair and skin delicate, soft, and conditioned.

- Clean rinsing leaves hair silky and manageable
- More economical and sanitary than bar soaps
- For skin care use in a variety of public facilities including schools, daycare centers, health spas, locker rooms, hotels and resorts

| Item # | Size |
|----------|----------------------------|
| 77319-00 | 12 - 900 mL Bag in Box |
| 77329-00 | 6 - 1000 mL Clario Bags |
| 77362-00 | 6 - 2 Liter Triton Bottles |
| 77304-00 | 4 - 1 Gal. Bottles |
| 77355-00 | 55 Gal. Drum |

DISPENSERS

Clario® Manual Dispensers

Foaming and Lotion Manual Dispensers



Durable cost effective dispenser that is easy to refill and easy to use.

- Large site glass for easy product identification and maintenance
- Pre-drilled backplate designed to reduce installation time
- Sanitary factory sealed 1,000 mL bags prevent contamination
- ADA compliant

| Item # | Size |
|----------|--------------------------|
| 92542-00 | 12 - Foam White Manual |
| 92543-00 | 12 - Foam Black Manual |
| 92540-00 | 12 - Lotion White Manual |
| 92541-00 | 12 - Lotion Black Manual |



DISPENSERS

Clario® Touch Free Dispensers

Foaming Touch Free Dispensers



Touch free, durable, easy to refill with 98% no-waste evacuation.

- Use same 1000 mL bags as Clario® manual dispensers.
- Automatic dispensing promotes increased hand washing for a healthier environment
- Batteries included, no extra expense at installation
- Durable ABS construction with easily cleaned cover

| Item # | Size |
|----------|-------------------------|
| 91866-00 | 6 - Foam White TF Disp. |
| 91968-00 | 6 - Foam Black TF Disp. |

Drip Tray

Plastic Dispenser Drip Tray



Plastic dispenser tray can be used with Clario® Touch Free and Clario manual dispensers.

- Catches any misses to keep floors clean
- Easily attaches to wall under each dispenser

| Item # | Size |
|----------|---------------|
| 92351-00 | 1 - Drip Tray |

Clario® TF Black Floor Stand

Black Metal Floor Stand Designed for Clario® Touch Free Dispenser



Black metal floor stand makes sanitizing convenient.

- Sturdy construction and stable design prevents tipping
- Easy installation, hardware included
- Pleasing design fits any facility
- Ideal for use where wall mounted dispensers are not practical

| Item # | Size |
|----------|-----------------|
| 92060-00 | 1 - Floor Stand |

Flat Top Gallon Dispenser Pump and Wall Bracket

Pump and Wall Bracket for Flat Top Gallon Dispensers



Great for both grit and lotion hand cleansers.

- For use with flat top dispenser containers
- For skin care use in a variety of industrial settings including manufacturing, machine shops, maintenance areas and automotive shops

| Item # | Size |
|----------|--------------------|
| 90106-00 | 1 - Dispenser Pump |
| 90105-00 | 1 - Wall Bracket |

Triton® HD 2 L Dispenser

Dispenser for 2 Liter Triton Bottles



Heavy duty, excellent for high traffic, high volume areas.

- Sanitary factory sealed bottle
- Precise portion control
- Opaque bottle makes it easy to determine when it's time to replace

| Item # | Size |
|----------|------------------------|
| 91827-00 | 6 - 2 Liter Dispensers |

Triton® HD 4 L Dispenser

Dispenser for 4 Liter Triton Bottles



Heavy duty, excellent for high traffic, high volume areas.

- Opaque bottle makes it easy to determine when it's time to replace
- Sanitary factory sealed bottle
- Precise portion control

| Item # | Size |
|----------|------------------------|
| 91828-00 | 4 - 4 Liter Dispensers |



Equipment innovations from Betco reduce labor costs, increase productivity, and optimize processes

Machines are built to provide years of reliable service and backed by an industry-leading warranty policy

Technical service team is available to assist with troubleshooting, repairs, and general questions



Equipment Solutions

That Meet the Need

We've applied 70+ years of experience into creating cutting-edge equipment that cleans better, faster. Our line features next-generation automatic scrubbers from small area to rider, durable workhorse burnishers and floor machines, the market's most efficient stripping machines, and more—many of which feature best-in-class specifications and innovative technologies.



SMALL AREA AUTOMATIC SCRUBBERS

MotoMop® Small Area Cleaning Machine

Up to 7,320 sq. ft. / hr.



True clean, up to 400% faster!

- Removes up to 98% more soil than a mop and bucket
- Small area cleaning and spill clean-up and recovery
- 360° motion to clean in all directions
- Lithium ion battery with 3 year full warranty

Length: 17.5"
Width: 16"
Height: 51"

| Item # | Description |
|-----------|-----------------------------|
| E84700-00 | MotoMop® Automatic Scrubber |

GeneSys™ 15 15" Cylindrical Automatic Scrubber

Up to 10,000 sq. ft. / hr.



Greatest versatility, clean any small area!

- Powerful cylindrical scrub brush for hard surfaces
- Multiple tool options create 4 machines in 1 - carpet extractor, upholstery spotter, wet/dry vacuum, and solution sprayer
- Ergonomic handle design, easy operator controls
- 15" medium duty brush included

Length: 31"
Height: 22"
Width: 19"

| Item # | Description |
|-----------|---|
| E88900-00 | GeneSys™ 15" Cylindrical Automatic Scrubber |

Optional Accessories

- E88624-00 - Brush, General Scrubbing
- E88681-00 - Brush, Grit Stripping
- EP50167-00 - Hard Surface Tool Kit
- EP50168-00 - Carpet and Upholstery Tool Kit
- E88976-00 - Solution Spray Wand
- EP50170-00 - Complete Master Tool Kit

Genie™ B All Purpose Automatic Scrubber

Up to 11,560 sq. ft. / hr.



Goes anywhere a mop and bucket can go!

- Compact size cleans tight spaces
- Low 69 dB noise level is ideal for use in occupied spaces
- Onboard charger with maintenance free battery
- Use for daily scrubbing of VCT, resilient, concrete, textured/grouted floors
- General purpose scrub brush included

Length: 27"
Width: 17"
Height: 17" storage
Height: 44" upright

| Item # | Description |
|-----------|---|
| E83039-00 | Genie™ B All Purpose Automatic Scrubber |

Optional Accessories

- E82408-00 - Pad Holder
- E82526-00 - Brush, Medium Scrubbing
- EP50061-00 - Battery & Charger Kit

GENESYS™ 20" AUTOMATIC SCRUBBERS

GeneSys™ 20D 20" Automatic Scrubber w/ Pad Assist

Up to 22,500 sq. ft. / hr.



Clean faster and with less effort.

- Best performance specifications in its class
- SoliChem™ Technology (option) reduces daily chemical costs by up to 80%
- Airoflex® Squeegee Technology (standard) increases vacuum by up to 40%
- Fortify™ Asset Protection & Management suite focuses on extending machine life and lowering cost of ownership
- One 20" pad holder included

Length: 51"
Height: 42"
Width: 21" w/o squeegee
Width: 30" w/ squeegee

| Item # | Description |
|-----------|--|
| E26700-00 | w/ 2-12V 130AH Wet Battery, On-board Charger |
| E26704-00 | w/ 2-12V 110AH AGM Battery, On-board Charger |

Optional Accessories

- E29540-00 General Purpose Brush - 20-inch
- E29011-00 Red Pads - 20-inch
- SoliChem™ Technology
- Wet Battery Protection System
- Armor™ Telemetry
- Programmable Timer Lock-out
- SoliChem™ Chemicals - pH7 Ultra or Grease Solv

GeneSys™ 20DT 20" Automatic Scrubber w/ Transaxle Drive

Up to 22,500 sq. ft. / hr.



Clean faster and with less effort.

- Best performance specifications in its class
- SoliChem™ Technology (option) reduces daily chemical costs by up to 80%
- Airoflex® Squeegee Technology (standard) increases vacuum by up to 40%
- Fortify™ Asset Protection & Management suite focuses on extending machine life and lowering cost of ownership
- One 20" pad holder included

Length: 51"
Height: 42"
Width: 21" w/o squeegee
Width: 30" w/ squeegee

| Item # | Description |
|-----------|--|
| E26800-00 | w/ 2-12V 130AH Wet Battery, On-board Charger |
| E26804-00 | w/ 2-12V 110AH AGM Battery, On-board Charger |

Optional Accessories

- E29540-00 General Purpose Brush - 20-inch
- E29011-00 Red Pads - 20-inch
- SoliChem™ Technology
- Wet Battery Protection System
- Armor™ Telemetry
- Programmable Timer Lock-out
- SoliChem™ Chemicals - pH7 Ultra or Grease Solv

GeneSys™ 20ORB 20" Orbital Automatic Scrubber w/ Traction Drive

Up to 22,500 sq. ft. / hr.



Powerful cleaning and finish removal in one compact, quiet design.

- Boasts 110 lb of down pressure - the highest down pressure in the category.
- Removes layers of even the hardest finishes in one pass.
- Ideal for day cleaning or finish removal at up to 80% faster than traditional stripping.
- SoliChem™ Technology (option) reduces daily chemical costs by up to 80%

Length: 46"
Height: 42"
Width: 21" w/o squeegee
Width: 30" w/ squeegee

| Item # | Description |
|-----------|--|
| E26900-00 | w/ 2-12V 130AH Wet Battery, On-board Charger |
| E26904-00 | w/ 2-12V 110AH AGM Battery, On-board Charger |

Optional Accessories

- E29540-00 General Purpose Brush - 20-inch
- E29011-00 Red Pads - 20-inch
- SoliChem™ Technology
- Wet Battery Protection System
- Armor™ Telemetry
- Programmable Timer Lock-out
- SoliChem™ Chemicals - pH7 Ultra or Grease Solv

Airoflex® is a registered trademark of the Midwest Rubber Company
Armor™ is a trademark of USA Clean

CREWMAN™ 20" AUTOMATIC SCRUBBERS

Crewman™ AS20B

20" Automatic Scrubber w/ Brush Assist

Up to 15,000 sq. ft. / hr.



Simple design and rugged construction provide great value.

- Simple touch button controls make training easy
- Weighted squeegee maximizes water recovery
- Sleek body design is perfect for small and congested areas
- 20" pad holder is included

Length: 43"
Height: 38"
Width: 22" w/o squeegee
Width: 30" w/ squeegee

| Item # | Description |
|-----------|--|
| E29968-00 | w/ 2-12V 115AH Wet Battery, 12 Amp Charger |
| E29969-00 | w/ 2-12V 130AH Wet Battery, 12 Amp Charger |
| E29967-00 | w/ 2-12V 110AH AGM Battery, 12 Amp Charger |

Optional Accessories

- E88330-00 - Brush, General Scrubbing
- E88269-00 - Brush, Medium Scrubbing
- E88270-00 - Brush, Heavy Duty Scrubbing
- E88271-00 - Brush, Grit Stripping

GENESYS™ 20" MID SIZE AUTOMATIC SCRUBBERS

GeneSys™ 26D

26" Disk Auto Scrubber

Up to 29,000 sq. ft. / hr.



Clean faster and with less effort.

- Best performance specifications in its class
- SoliChem™ Technology (standard) reduces daily chemical costs by up to 80%
- Airoflex® Squeegee Technology (standard) increases vacuum by up to 40%
- Fortify™ Asset Protection & Management suite focuses on extending machine life and lowering cost of ownership
- Two 13" pad holders included

Length: 55"
Width: 28" w/o squeegee
Width: 35" w/ squeegee
Height: 44"

| Item # | Description |
|-----------|---|
| E27200-00 | GeneSys™ 26D - (4) 6V 260AH Wet Battery |
| E27212-00 | GeneSys™ 26D - (4) 6V 220AH AGM Battery |

Additional configurations available

Optional Accessories

- Wet Battery Protection System
- Armor™ Telemetry
- BlueTooth Battery Gauge
- Programmable Timer Lock-out
- General Purpose Brush
- SoliChem™ Chemicals - pH7 Ultra or Grease Solv

GeneSys™ 28D

28" Disk Auto Scrubber

Up to 31,500 sq. ft. / hr.



Clean faster and with less effort.

- Best performance specifications in its class
- SoliChem™ Technology (standard) reduces daily chemical costs by up to 80%
- Airoflex® Squeegee Technology (standard) increases vacuum by up to 40%
- Fortify™ Asset Protection & Management suite focuses on extending machine life and lowering cost of ownership
- Two 14" pad holders included

Length: 56"
Width: 30" w/o squeegee
Width: 40" w/ squeegee
Height: 44"

| Item # | Description |
|-----------|---|
| E27300-00 | GeneSys™ 28D - (4) 6V 260AH Wet Battery |
| E27312-00 | GeneSys™ 28D - (4) 6V 220AH AGM Battery |

Additional configurations available

Optional Accessories

- Wet Battery Protection System
- Armor™ Telemetry
- BlueTooth Battery Gauge
- Programmable Timer Lock-out
- General Purpose Brush
- SoliChem™ Chemicals - pH7 Ultra or Grease Solv

GeneSys™ 32D

32" Disk Auto Scrubber

Up to 36,000 sq. ft. / hr.



Clean faster and with less effort.

- Best performance specifications in its class
- SoliChem™ Technology (standard) reduces daily chemical costs by up to 80%
- Airoflex® Squeegee Technology (standard) increases vacuum by up to 40%
- Fortify™ Asset Protection & Management suite focuses on extending machine life and lowering cost of ownership
- Two 16" pad holders included

Length: 59"
Width: 34" w/o squeegee
Width: 45" w/ squeegee
Height: 44"

| Item # | Description |
|-----------|---|
| E27500-00 | GeneSys™ 32D - (4) 6V 260AH Wet Battery |
| E27512-00 | GeneSys™ 32D - (4) 6V 220AH AGM Battery |

Additional configurations available

Optional Accessories

- Wet Battery Protection System
- Armor™ Telemetry
- BlueTooth Battery Gauge
- Programmable Timer Lock-out
- General Purpose Brush
- SoliChem™ Chemicals - pH7 Ultra or Grease Solv

GeneSys™ 28ORB

28" Orbital Auto Scrubber

Up to 31,500 sq. ft. / hr.



Clean faster and with less effort.

- Best performance specifications in its class
- SoliChem™ Technology (standard) reduces daily chemical costs by up to 80%
- Airoflex® Squeegee Technology (standard) increases vacuum by up to 40%
- Fortify™ Asset Protection & Management suite focuses on extending machine life and lowering cost of ownership
- One 28" x 14" pad drive plate included

Length: 54"
Width: 29" w/o squeegee
Width: 40" w/ squeegee
Height: 44"

| Item # | Description |
|-----------|---|
| E27400-00 | GeneSys™ 28ORB - (4) 6V 260AH Wet Battery |
| E27412-00 | GeneSys™ 28ORB - (4) 6V 220AH AGM Battery |

Additional configurations available

Optional Accessories

- Wet Battery Protection System
- Armor™ Telemetry
- BlueTooth Battery Gauge
- Programmable Timer Lock-out
- General Purpose Brush
- SoliChem™ Chemicals - pH7 Ultra or Grease Solv

Airoflex® is a registered trademark of the Midwest Rubber Company
Armor™ is a trademark of USA Clean



STEALTH™ 20" AUTOMATIC RIDING SCRUBBERS

Stealth™ DRS21BT MicroRiding Scrubber

Up to 30,000 sq. ft. / hr.



The most compact ride-on scrubber.

- Cleans 30,000 square feet per hour, reducing cleaning costs by 36%
- Exclusive ECO-Mode technology reduces noise level to 54 dBA and lowers energy consumption
- Large tank size provides extended runtime
- 21" pad holder included

Length: 52"
Height: 47"
Width: 23" w/o squeegee
Width: 30" w/ squeegee

| Item # | Description |
|-----------|--|
| E29961-00 | w/ 2-12V 130AH Wet Battery, 12 Amp Charger |
| E29962-00 | w/ 2-12V 110AH AGM Battery, 12 Amp Charger |
| E29963-00 | w/ 2-12V 155AH Wet Battery, 12 Amp Charger |

Optional Accessories

- E22654-00 - Brush, General Scrubbing
- E22655-00 - Brush, Medium Scrubbing
- E22656-00 - Brush, Heavy Duty Scrubbing

Stealth™ DRS26BT Automatic Rider Scrubber

Up to 42,000 sq. ft. / hr.



Highest productivity, simple design.

- Innovative design is 4X quieter than other automatic scrubbers on the market
- 1-Touch Intelligent Drive Control System
- Simple operator controls
- Ideal for day cleaning
- Two 13" pad holders included

Length: 62"
Height: 52"
Width: 27" w/o squeegee
Width: 35" w/ squeegee

| Item # | Description |
|-----------|---|
| E29926-00 | w/ 4-6V 235AH Wet Battery, 25 Amp Charger |
| E29927-00 | w/ 4-6V 200AH AGM Battery, 25 Amp Charger |

Optional Accessories

- E81681-00 - Brush, General Scrubbing
- E82850-00 - Brush, Medium Scrubbing
- E82851-00 - Brush, Heavy Duty Scrubbing
- E82852-00 - Brush, Grit Stripping

Stealth™ DRS32BT Automatic Rider Scrubber

Up to 55,000 sq. ft. / hr.



Highest productivity, simple design.

- Innovative design is 4X quieter than other automatic scrubbers on the market
- 1-Touch Intelligent Drive Control System
- Simple operator controls
- Ideal for day cleaning
- Two 16" pad holders included

Length: 62"
Height: 54"
Width: 33" w/o squeegee
Width: 41" w/ squeegee

| Item # | Description |
|-----------|---|
| E29931-00 | w/ 4-6V 235AH Wet Battery, 25 Amp Charger |
| E29932-00 | w/ 4-6V 200AH AGM Battery, 25 Amp Charger |

Optional Accessories

- E22093-00 - Brush, General Scrubbing
- E89557-00 - Brush, Medium Scrubbing
- E22092-00 - Brush, Heavy Duty Scrubbing
- E22094-00 - Brush, Grit Stripping

HIGH SPEED BURNISHERS

Crewman™ 1600 / Crewman™ 2000 20" High Speed Burnishers

Up to 16,000 sq. ft. / hr.



Value positioned.

- Fully adjustable handle can be used in floating or locked position
- Rugged durability, heavy duty 1.5 hp motor
- Precision balanced, flexible pad driver offers an even burnish
- Use for dry and restorative burnishing

Pad size: 20"

| Item # | Description |
|-----------|--|
| E83015-00 | Crewman™ 1600 - 20" High Speed Burnisher |
| E83016-00 | Crewman™ 2000 - 20" High Speed Burnisher |

Optima XR Series High Speed Burnishers

Up to 34,000 sq. ft. / hr.



Up to 27% more fuel efficient.

- XR (Xtended Run) due to exclusive, high-efficiency fuel delivery system
- Increased gloss with increased pad speed
- Powerful Kawasaki 603cc engine with certified EPA emissions
- Premium cast aluminum deck and heavy-duty components
- Industry leading 3-year warranty

Pad sizes: 21", 27"

| Item # | Description |
|-----------|--|
| E12800-00 | Optima XR - 21" Propane Burnisher |
| E12830-00 | Optima XR - 27" Propane Burnisher |
| E12850-00 | Optima XR - 27" Propane Burnisher w/Dust Control |

Optional Accessories

- Emission Monitoring System
- Centrifugal Clutch
- Dust Control (27 inch only)

FLOOR MACHINES

Crewman™ 17HD / Crewman™ 20HD Standard Floor Machines

Up to 1,100 sq. ft. / hr.



Value positioned.

- Precision balancing reduces operator fatigue
- Rugged durability, heavy-duty 1.5 hp motor, triple planetary steel gearbox
- Use for stripping, scrubbing, spray buffing and carpet bonneting

Pad size: 17"
Pad size: 20"

| Item # | Description |
|---|--|
| E83013-00 | Crewman™ 17HD - 17" Standard Floor Machine |
| E83014-00 | Crewman™ 20HD - 20" Standard Floor Machine |
| Optional Accessories | |
| <ul style="list-style-type: none"> • E83186-00 - Pad Holder • E87001-00 - Poly Scrub Brush • E87002-00 - Nylon Carpet Brush • E87003-00 - Brush, Grit Stripping • E87004-00 - Brush, Grit Scrubbing • E83187-00 - Solution Tank | |

Foreman® 20DS 20" Dual Speed Floor Machine

Up to 1,100 sq. ft. / hr.



Versatile, select 175 or 330 RPM to strip, scrub or buff.

- Hour meter to manage maintenance and usage
- Durable roto-mold construction, heavy duty 1.5 hp motor, triple planetary steel gearbox
- Use for stripping, scrubbing, spray buffing and carpet bonneting

Pad size: 20"

| Item # | Description |
|---|--|
| E83010-00 | Foreman® 20DS - 20" Dual Speed Floor Machine |
| Optional Accessories | |
| <ul style="list-style-type: none"> • E83185-00 - Pad Holder • E87012-00 - Poly Scrub Brush • E87013-00 - Nylon Carpet Brush • E87014-00 - Brush, Grit Stripping • E87015-00 - Brush, Grit Scrubbing • E83187-00 - Solution Tank | |

FLOOR STRIPPERS

Crewman™ 20 ORB 20" Orbital Strip Machine

Up to 7,000 sq. ft./hr. on Wood Floors
Up to 2,700 sq. ft./hr. on VCT Floors



Safely and effectively strip and prep any floor surface.

- High speed 3,400 RPM orbital motor quickly cuts through the toughest coatings without the use of harsh chemicals
- Cast iron base and optional weight system provide maximum durability
- Optional dust containment system easily connects to any dry vacuum

Length: 22"
Width: 16"
Height: 46"

| Item # | Description |
|--|--|
| E12801-00 | Crewman™ 20 ORB - 20" Standard Machine |
| E12806-00 | Crewman™ 20 ORB - 20" Machine w/ weights |
| Optional Accessories | |
| <ul style="list-style-type: none"> • EP50249 - 20" Dust Containment Kit | |

Crewman™ 28 ORB 28" Orbital Strip Machine

Up to 10,000 sq. ft./hr. on Wood Floors
Up to 3,600 sq. ft./hr. on VCT Floors



Safely and effectively strip and prep any floor surface.

- High speed 3,400 RPM orbital motor quickly cuts through the toughest coatings without the use of harsh chemicals
- Cast iron base and optional weight system provide maximum durability
- Optional dust containment system easily connects to any dry vacuum

Length: 30"
Width: 16"
Height: 46"

| Item # | Description |
|--|--|
| E12811-00 | Crewman™ 28 ORB - 28" Machine w/ weights |
| Optional Accessories | |
| <ul style="list-style-type: none"> • EP50250 - 28" Dust Containment Kit | |

Big Bertha® 30" Stripping Machine

Up to 30,000 sq. ft. / hr.



Most productive machine for stripping large areas and excessive finish build up.

- Triple counter-rotating brushes easily remove multiple layers of floor finish in a single pass
- Rugged powder coated steel construction for heavy use in tough environments
- Floating shroud contains stripper/prevents splashing

Length: 57"
Width: 33"
Height: 43.5"

| Item # | Description |
|-----------|---------------------------------------|
| E12327-00 | Big Bertha® - 30" - Stripping Machine |

Lil Bertha® 24" Stripping Machine

Up to 24,000 sq. ft. / hr.



Most productive machine for stripping large areas and excessive finish build up.

- Triple counter-rotating brushes easily remove multiple layers of floor finish in a single pass
- Rugged powder coated steel construction for heavy use in tough environments
- Floating shroud contains stripper/prevents splashing

Length: 54"
Width: 27"
Height: 43.5"

| Item # | Description |
|-----------|-------------------------------------|
| E88398-00 | Lil Bertha® - 24" Stripping Machine |



CONCRETE & TERRAZZO POLISHERS

Crete Rx™ CM30

Concrete / Terrazzo Maintenance Machine

Up to 3,375 sq. ft. / hr.

| Item # | Description |
|-----------|--------------------------------------|
| E29805-00 | Crete Rx™ CM30 - Maintenance Machine |



Quick, affordable concrete maintenance.

- Propane power with planetary drive performs Crete Rx™ honing and polishing with ease
- Smaller footprint with aggressive, high-speed RPM
- All steel construction with EPA/CARB certified engine

Length: 79
Width: 32
Height: 46

WET / DRY VACUUMS

Workman® 20

Wet / Dry Vacuum

Up to 8,000 sq. ft. / hr.

| Item # | Description |
|-----------|--------------------------------|
| E83012-00 | Workman® 20 - Wet / Dry Vacuum |



Innovative "tip and pour" design makes emptying easy, large 20 gallon capacity.

- Powerful 1.75 hp motor offers maximum recovery in wet and dry applications
- Multi task tool kit included, optional front mount squeegee available
- Use for all types of wet or dry vacuuming on hard floor and carpet

Width: 20.5" w/o squeegee
Width: 29" w/ squeegee
Height: 39.75"

Optional Accessories

- E83011-00 - Front Mount Squeegee
- E83594-00 - HEPA Filter

DRY VACUUMS

PowerUP 14

Upright Vacuum

Up to 3,300 sq. ft. / hr.

| Item # | Description |
|-----------|-----------------------------|
| E29990-00 | PowerUP 14 - Upright Vacuum |



Powerful dual motor system optimizes cleaning, includes onboard tool kit with telescoping wand.

- Standard HEPA filter, filters out 99.97% of contaminants at 3 microns
- Expanded wheel base and locking foot pedal to maximize stability
- Use for carpet, blinds and upholstery vacuuming

Length: 8" Base
Width: 14"
Height: 46" handle upright
Height: 6" handle lowered

Bac Pac Lite

5 Liter Backpack Vacuum

7,500 sq. ft. / hr. on Floors
2,900 sq. ft. / hr. on Stairways
2,200 sq. ft. / hr. on Partitions

| Item # | Description |
|-----------|--|
| E85903-00 | Bac Pac Lite - 5 Liter Backpack Vacuum |



Lightweight ergonomic design helps prevent operator fatigue.

- Less than 70 dB sound level, ideal for use in occupied spaces
- Use for residential, commercial carpet, office partitions, blinds, draperies, vent and duct cleaning

Height: 22.5"

CARPET MACHINES

FiberPRO® 8
Self Contained Carpet Extractor

Up to 2,000 sq. ft. / hr.

| Item # | Description |
|-----------|---|
| E87304-00 | FiberPRO® 8 - Self Contained Carpet Extractor |



Deep cleans all types of carpets in a single pass maximizing productivity.

- Preferred method of cleaning, uses less chemical and allows carpets to dry in less than 24 hours
- Unique roller support bar evenly balances machine helping reduce operator fatigue

Length: 41"
Width: 17.5"
Height: 34"

FiberPRO® 20
Self Contained Carpet Extractor

Up to 8,000 sq. ft. / hr.

| Item # | Description |
|-----------|--|
| E87303-00 | FiberPRO® 20 - Self Contained Carpet Extractor |



Deep cleans all types of carpets in a single pass maximizing productivity.

- Self propelled, variable speed; multiple brush settings
- Floating vacuum shoe provides high water recovery reducing dry times
- Large 20 gallon capacity for cleaning large areas

Length: 49"
Width: 22"
Height: 41"

Optional Accessories

- E85516-00 - 20' Vac & Solution Hose Assembly
- E85519-00 - Stainless Steel Carpet Wand
- E85523-00 - 3" Hand Tool

FiberPRO® Carpet Spotter
Carpet Spotter

| Item # | Description |
|-----------|--------------------------|
| E88049-00 | FiberPRO® Carpet Spotter |



Effectively removes spots and soils from carpeting and upholstery.

- Retractable handle and wide wheel base make transport easy
- Optional floor wand available for cleaning stairs and larger areas

Length: 21"
Width: 13"
Height: 23"

Optional Accessories

- E85524-00 - Stainless Steel Carpet Wand

FiberPRO® Air Mover
Floor Dryer

| Item # | Description |
|-----------|-----------------------------------|
| E89968-00 | FiberPRO® Air Mover - Floor Dryer |



Powerful 1500 RPM airflow accelerates dry times.

- Rugged roto-mold construction, 3 speed settings
- Stackable design for increased airflow and easy storage
- Extend reach and increase air flow with daisy-chain multi-unit capability
- Three operating positions: 0°, 45° and 90°

Length: 15"
Width: 15"
Height: 15"

| Products | Page |
|--|--------|
| AC114 Multi-Purpose Acid Cleaner • Delimer..... | 22 |
| AF315 Disinfectant • Deodorant • Cleaner..... | 27 |
| AF79 Disinfectant, Cleaner, Fungicide, Mildewstat, Virucide, Deodorizer..... | 25 |
| AF79 CONCENTRATE Acid Free Cleaner • Disinfectant Fungicidal • Virucidal..... | 25 |
| ALCOHOL FREE FOAMING HAND SANITIZER Freshly Scented, Foaming..... | 50 |
| ALCOHOL FOAMING HAND SANITIZER Ethanol Based Foaming..... | 50 |
| ALCOHOL GEL SANITIZER Ethanol Based..... | 50 |
| ANTIBACTERIAL LOTION SKIN CLEANSER Pearlized Cleanser with PCMX..... | 50 |
| ANTI-SPLASH URINAL SCREEN 100% Recyclable..... | 26 |
| APPLICATOR REFILL PADS 18" or 24"..... | 16 |
| AX-IT® AEROSOL Baseboard Cleaner and Stripper..... | 8 |
| AX-IT® PLUS Very Aggressive No-Rinse Floor Stripper..... | 8 |
| BARRIER FLUID Oil-based Malodor Blocking Liquid..... | 26 |
| BEST BET™ Liquid Creme Cleanser..... | 25 |
| BEST SCENT Air Fresheners..... | 29 |
| BEST SCRUB Top Scrub Floor Cleaner..... | 10 |
| BETCO EXPRESS® with SRT Fast Drying - Fast Curing Floor Finish..... | 5 |
| BETCOBEST® LM HIGH BUILD FLOOR FINISH with MMT/50™ Technology..... | 6 |
| BETCO® BRITE MSP Multi-Surface Polish • Protectant..... | 20 |
| BETCO® ONE STEP High Speed Cleaner • Restorer..... | 10 |
| BOL MAID® Porcelain Toilet Bowl Cleaner..... | 24 |
| BTB Mildew Stain Remover • Bathroom Cleaner..... | 25 |
| CIDE-BET II Antibacterial, Bactericidal, Virucidal, Fungicidal... | 28 |
| CITRUFoAM All Purpose Cleaner • Degreaser..... | 18 |
| CITRUS CHISEL Natural Citrus Cleaner Degreaser..... | 21, 32 |
| CITRUS KITCHEN DEGREASER Citrus Cleaner Degreaser..... | 33 |
| CITRUSOLV™ 40 Heavy-Duty Solvent Degreaser..... | 23 |
| CITRUSOLV™ CONCENTRATE Natural Degreaser • Deodorant..... | 23 |

| Products | Page |
|--|------|
| CITRUSOLV™ HF High Flash Solvent Degreaser..... | 23 |
| CITRUSOLV™ WR Water Rinsable Degreaser..... | 23 |
| CITRUSPRAY™ Foaming Degreaser..... | 21 |
| CLARIO® MANUAL DISPENSERS Foaming and Lotion Dispensers..... | 51 |
| CLARIO® TOUCH FREE DISPENSERS Foaming and Lotion Dispensers..... | 52 |
| CLARIO® TOUCH FREE BLACK FLOOR STAND For use with Touch Free Dispensers..... | 52 |
| CLEAR IMAGE Glass and Surface Cleaner..... | 19 |
| CLEAR IMAGE AEROSOL Glass and Surface Cleaner..... | 19 |
| CLEAR IMAGE CONCENTRATE Glass and Surface Cleaner..... | 19 |
| CRETE RX™ CLEANING & BURNISHING PADS For Use with CreteRx..... | 11 |
| CRETE RX™ CONCRETE STAIN REMOVAL KIT For Use with CreteRx..... | 12 |
| CRETE RX™ DENSICLEAN® Polished Concrete Cleaner..... | 9 |
| CRETE RX™ DENSIFIER CreteRx RTU Densifying Compound..... | 11 |
| CRETE RX™ HONING TOOL For Use with CreteRx..... | 12 |
| CRETE RX™ LIQUIGRIND Ready To Use Honing Compound..... | 11 |
| CRETE RX™ LIQUISHIELD Concrete Guard..... | 11 |
| CRETE RX™ LIQUISTRIP Concentrated Stripper for Permanent Coatings... | 11 |
| CRETE RX™ POLISHING TOOL For Use with CreteRx..... | 12 |
| CRETE RX™ RESET TOOL For Use with CreteRx..... | 12 |
| CRETE RX™ STAIN DEFENSE CreteRx Ready to Use Penetrating Sealer..... | 11 |
| CRETE RX™ TOOL HOLDER For Use with CreteRx..... | 12 |
| COUNTER ROTATING PLATE (CRP) For Use with CreteRx..... | 12 |
| CTW501 Car and Truck Wash..... | 22 |
| DAILY DISINFECTANT DUAL Disinfectant/Detergent/Deodorant..... | 27 |
| DAILY SCRUB SC Floor Cleaner..... | 10 |
| DEEP BLUE Glass and Surface Cleaner..... | 19 |
| DEEP BLUE AEROSOL Glass and Surface Cleaner..... | 20 |
| DEEP BLUE CONCENTRATE Glass and Surface Cleaner..... | 19 |
| DEEP BLUE CONCENTRATE 1:20 Glass and Surface Cleaner..... | 20 |

| Products | Page |
|---|------|
| DM120 Dust Mop Treatment..... | 16 |
| DRAIN STATION Drain Maintenance Pump..... | 37 |
| DRAIN & TRAP TREATMENT Cleaner and Maintainer..... | 34 |
| DRAIN TREATMENT NEEM Drain Treatment for Beverage Machines..... | 34 |
| DRIP TRAY For use with Clario Dispensers..... | 52 |
| DUMPSTER SPRAY SYSTEM Automatic Dumpster Spray System..... | 37 |
| DUMPSTER TREATMENT Dumpster Cleaner and Odor Eliminator..... | 34 |
| DUST MOP TREATMENT AEROSOL Water-Based Dust Mop Treatment..... | 16 |
| E2 ANTIBACTERIAL FOAMING SKIN CLEANSER For Food Service Applications..... | 49 |
| E3 ALCOHOL FREE FOAMING SANITIZER Fast Drying Moisturizing..... | 50 |
| EASY TASK™ Thermoplastic Spray Buff..... | 10 |
| EMULSINATOR Aggressive No-Rinse Stripper..... | 8 |
| EMULSION PRO+ Oil and Water Wood Floor Finish and Sealer..... | 15 |
| EXTREME® Low Odor No-Rinse Floor Stripper..... | 7 |
| EXTREME® ULTRA Ultra Concentrated Low Odor Floor Stripper..... | 8 |
| FACTORY FORMULA™ HP Cleaner • Degreaser Concentrate..... | 21 |
| FASTDOSE™ Chemical Management..... | 44 |
| FASTDRAW® 1 Chemical Management..... | 44 |
| FASTDRAW® FOAMER II Chemical Management..... | 44 |
| FASTDRAW® FREEDOM Chemical Management..... | 44 |
| FASTDRAW® PRO Chemical Management..... | 44 |
| FASTPAK® Mobile Dilution Control Kit..... | 45 |
| FIBERCAP™ MP Multi-Purpose Encapsulation Cleaner..... | 14 |
| FIBERPRO® ALKALINE CONDITIONER pH Neutralizer Treatment..... | 13 |
| FIBERPRO® BONBET™ Bonnet Shampoo..... | 14 |
| FIBERPRO® ENZYME DEODORIZER Organic Stain Remover and Deodorizer..... | 13 |
| FIBERPRO® ES-STEAM™ Extraction Cleaner..... | 14 |
| FIBERPRO® EXTRACTION CLEANER 5th Generation Extraction Cleaner..... | 14 |
| FIBERPRO® FOAM CONTROL Liquid Defoamer..... | 14 |

| Products | Page |
|---|------|
| FIBERPRO® GUM REMOVER Gum Remover..... | 13 |
| FIBERPRO® P • O • G Paint, Oil and Grease Remover..... | 13 |
| FIBERPRO® RED 'N' BROWN OUT Red Stain • Tannin Debrowner Treatment..... | 13 |
| FIBERPRO® SPOT BET All Purpose Spot and Stain Remover..... | 13 |
| FIBERPRO® TLC Traffic Lane Cleaner..... | 14 |
| FIGHT-BAC® RTU Disinfectant • Deodorizer • Cleaner..... | 28 |
| FINISH 101® Acrylic Polymer Floor Finish..... | 6 |
| FLAT TOP GALLON DISPENSER PUMP & WALL BRACKET For Flat Top Gallon Dispensers..... | 52 |
| FLATWARE PRESOAK Concentrated Liquid Presoak & Brightener..... | 36 |
| FLOOR SEALER Metal Interlocked Acrylic Polymer Floor Sealer..... | 7 |
| FOAM GUN Foam Gun for Dumpster Treatment..... | 37 |
| FOAMING ANTIBACTERIAL SKIN CLEANSER Vitamin E Enriched..... | 49 |
| FOAMING HAND, HAIR AND BODY SHAMPOO Vitamin E Enriched..... | 51 |
| FOREST 5 Foaming RTU Cleaner • Disinfectant..... | 25 |
| FORTIFY® FOAM CONTROL Concentrated Solid Antifoam Puck..... | 45 |
| GARBAGE DISPOSAL CLEANER Foaming Probiotic Cleaner and Freshener..... | 34 |
| GAME TIME CLEANER Maintenance Cleaner for Wood Floors..... | 15 |
| GE FIGHT-BAC® RTU Disinfectant • Cleaner • Virucide • Fungicide..... | 28 |
| GE FIGHT-BAC® RTU WIPES Disinfectant • Cleaner • Virucide • Fungicide..... | 28 |
| GERALDINE® Nonammoniated Finish Wax and Finish Stripper..... | 8 |
| GLARE® Metal Interlocked Acrylic Polymer Floor Finish..... | 6 |
| GLYBET™ III Disinfectant • Deodorant..... | 28 |
| GRAFFITI REMOVER Gel Formula..... | 20 |
| GREASE SOLV Probiotic Degreaser..... | 22 |
| GREEN EARTH® CITRUS CARPET SPOTTER Natural Gum and Grease Remover..... | 13 |
| GREEN EARTH® CLEAR FOAMING SKIN CLEANSER Dye Free and Fragrance Free..... | 49 |
| GREEN EARTH® DAILY FLOOR CLEANER Neutral pH Low Foaming..... | 9 |
| GREEN EARTH® FLOOR FINISH Non-Zinc Floor Finish and Sealer..... | 7 |
| GREEN EARTH® FLOOR STRIPPER Non-Butyl • Non-Ammoniated..... | 8 |

| Products | Page |
|--|------|
| GREEN EARTH® FOAMING SKIN CLEANSER Luxurious with Emollients..... | 49 |
| GREEN EARTH® GLASS CLEANER Streak Free Glass and Surface..... | 19 |
| GREEN EARTH® LOTION SKIN CLEANSER Moisturizing Lotion..... | 49 |
| GREEN EARTH® NATURAL ALL PURPOSE CLEANER Hard Surface Cleaner..... | 19 |
| GREEN EARTH® NATURAL DEGREASER Hard Surface Degreaser..... | 21 |
| GREEN EARTH® PEROXIDE CLEANER Concentrated All Purpose Cleaner..... | 18 |
| GREEN EARTH® RESTROOM CLEANER Concentrated • Non Corrosive • Heavy Duty..... | 25 |
| GREEN EARTH® RTU PEROXIDE CLEANER Ready-To-Use • Multi-Purpose..... | 18 |
| GREEN EARTH® RTU RESTROOM CLEANER Ready-To-Use • Non-Corrosive • Heavy Duty..... | 24 |
| GREEN EARTH® VELOCITY® Non-Butyl Degreaser..... | 21 |
| GYMSHOE® Two Component Waterbased Sport Floor Finish..... | 15 |
| HARD AS NAILS® Black Mark Resistant Metal Interlocked Finish..... | 5 |
| HEAVY WEIGHT BAR 18" / 24"..... | 16 |
| HD HIGH FOAM CHLORINATED DEGREASER High Foaming Degreaser..... | 33 |
| HD LOW FOAM CIP CHLORINATED DEGREASER Low Foaming Degreaser..... | 33 |
| HD ORANGE HAND CLEANER Heavy Duty with Citrus and Fine Pumice..... | 51 |
| HIGH FLOW PROPORTIONER Industrial Proportioner for Auto Scrubbers..... | 23 |
| HI-TECH® Metal Interlocked Floor Finish..... | 6 |
| HYBRID® Optically Energized Extended Wear Floor Finish..... | 5 |
| I.F.T. Intensive Floor Treatment..... | 16 |
| INSULATOR™ Static Dissipative Floor Finish..... | 6 |
| KITCHEN DEGREASER Cleaner and Degreaser..... | 33 |
| KLING™ Thickened Acid Toilet Bowl and Urinal Cleaner..... | 24 |
| LEMON FURNITURE POLISH Natural Lemon Oil..... | 20 |
| LIQUID CHISEL® MAX Ultra Strength Non-Butyl Degreaser..... | 22 |
| LOTION HAND, HAIR AND BODY SHAMPOO Pleasantly Scented..... | 51 |
| MAD Mild Acid Detergent..... | 33 |
| NEVER B4 Vehicle Cleaner • Pressure Washer Cleaner..... | 22 |
| NO-RINSE FLOOR CLEANER Continuous Floor Treatment..... | 32 |

| Products | Page |
|---|---------|
| ODOR CONTROL METERED AEROSOLS For Use with Metered Aerosol Dispenser..... | 29 |
| ODOR CONTROL METERED AEROSOL DISPENSER For Use with Metered Aerosols..... | 29 |
| OVEN/FRYER/GRILL CLEANER Ready To Use..... | 34 |
| OVEN AND GRILL CLEANER AEROSOL Gel Formulation • Fast Acting Lemon Fragrance..... | 32 |
| OVEN JELL Oven • Grill and Rangehood Cleaner..... | 32 |
| PEARLIZED WHITE LOTION SKIN CLEANSER Cleanser with Emollients..... | 50 |
| PINE QUAT Disinfectant, Deodorant, Detergent..... | 28 |
| PINK FOAMING SKIN CLEANSER Luxury Foaming..... | 49 |
| PINK LOTION SKIN CLEANSER Pearlized with Emollients..... | 50 |
| pH7 Daily Floor Cleaner..... | 10 |
| pH7 DUAL Neutral pH Disinfectant, Detergent, Deodorant..... | 27 |
| pH7 ULTRA Daily Floor Cleaner..... | 10 |
| pH7Q Neutral pH Disinfectant, Detergent, Deodorant..... | 27 |
| pHPERFECT Ice Melt Remover Floor Conditioner..... | 10 |
| PHOTON™ MAX with SRT High Gloss Remarkable Response Floor Finish..... | 6 |
| PLAYER'S CHOICE™ ONE Clear Waterbased Sport Floor Finish..... | 15 |
| PRODUCT SELECTION GUIDE Chemical Management..... | 46 - 47 |
| PULL® Toilet Bowl • Urinal Cleaner..... | 24 |
| PUSH® Drain Maintainer • Floor Cleaner • Spotter..... | 18 |
| QUARTERPACK Chemical Management..... | 45 |
| QUAT-STAT™ 5 One-Step Disinfectant • Cleaner..... | 27 |
| QUICKCOAT® Finish Applicator System..... | 7 |
| RECOVER LVT / Multi-Surface Stripper..... | 9 |
| REINFORCE Daily Cleaner and Protectant..... | 9 |
| REST STOP™ Virucidal, RTU Germicide, Cleaner, Disinfectant..... | 25 |
| RESCUE GLOSS LVT / Multi-Surface Floor Finish..... | 7 |
| RESCUE TRUMATTE LVT / Multi-Surface Floor Finish..... | 7 |
| SANIBET™ RTU Cleaner • Sanitizer • Deodorizer..... | 32 |
| SENTEC® Odor Eliminator Technology..... | 29 |

| Products | Page |
|---|------|
| SENTEC® METERED AEROSOLS For Use with Odor Control Dispenser..... | 29 |
| SMARTSCREEN® Urinal Screen with built in Pucks..... | 26 |
| SOLICHEM™ COMBO PACK - GREASE SOLV Solid Industrial Degreaser & Fortify™ Foam Control... .. | 45 |
| SOLICHEM™ COMBO PACK - pH7 Ultra Solid Neutral Floor Cleaner & Fortify™ Foam Control... .. | 45 |
| SOLICHEM™ GREASE SOLV Solid Industrial Degreaser | 45 |
| SOLICHEM™ pH7 Ultra Solid Neutral Floor Cleaner | 45 |
| SPECTACULOSO Lavender Multi-Purpose Cleaner..... | 18 |
| SPEEDEX CONCENTRATE Cleaner • Degreaser | 21 |
| SPEEDEX Ready-To-Use Cleaner • Degreaser..... | 21 |
| SPRAY AND FOAM DISPENSER Meat Room Dispenser..... | 37 |
| SPRAY FOAM Heavy Duty Foaming Degreaser | 33 |
| SPRAY FOAM ULTRA Heavy Duty Foaming Degreaser | 33 |
| SQUEAKY™ FLOOR CLEANER Maintenance Cleaner for Wood Floors..... | 15 |
| STAINLESS STEEL CLEANER • POLISH AEROSOL Streak Free • Ready-To-Use | 20 |
| STG CLEANER Daily Cleaner and Protectant..... | 9 |
| STG PENETRATING SEALER Stone, Tile, and Grout | 9 |
| STIX™ Toilet Bowl • Porcelain Cleaner | 24 |
| STREETSHOE® NXT Waterbased High Traffic Wood Floor Finish..... | 15 |
| SUPER KEMITE® Heavy Duty Cleaner • Degreaser..... | 22 |
| SURE BET™ II Foaming Shower Restroom Cleaner | 24 |
| SURE CURE™ Acrylic/Urethane Sealer | 7 |
| SYMPPLICITY™ ALL TEMP MACHINE DETERGENT Concentrated All Temperature..... | 35 |
| SYMPPLICITY™ ALL TEMP RINSE AID Concentrated Liquid Rinse Aid | 35 |
| SYMPPLICITY™ BETCO® BAR GLASS DETERGENT Low Foam | 37 |
| SYMPPLICITY™ BLAZE MACHINE DETERGENT Machine Detergent Concentrate | 34 |
| SYMPPLICITY™ BLAZE NP MACHINE DETERGENT Non Phosphate Machine Detergent | 35 |
| SYMPPLICITY™ BREAK Alkaline Builder | 39 |
| SYMPPLICITY™ BREAK ULTRA Super Concentrated Laundry Break | 39 |
| SYMPPLICITY™ BUILT DETERGENT Ultra High Performance | 39 |

| Products | Page |
|---|------|
| SYMPPLICITY™ CHLORINATED MACHINE DETERGENT Stain Fighting Detergent | 36 |
| SYMPPLICITY™ CITRUSUDS Dish & Pan Detergent | 31 |
| SYMPPLICITY™ COLOR SAFE DESTAINER Color Safe Destainer | 40 |
| SYMPPLICITY™ DESTAINER Laundry Bleach | 40 |
| SYMPPLICITY™ DETERGENT High Performance Detergent | 39 |
| SYMPPLICITY™ DETERGENT ULTRA Super-Concentrated Laundry Detergent | 39 |
| SYMPPLICITY™ DUET-OPL Detergent with Enzymes | 40 |
| SYMPPLICITY™ DUET-L Liquid Detergent with Bleach Alternative..... | 40 |
| SYMPPLICITY™ DUET-S Detergent with Color Safe Bleach | 40 |
| SYMPPLICITY™ DYE FREE FRAGRANCE FREE DETERGENT High Performance Detergent | 40 |
| SYMPPLICITY™ EMULSIFIER Emulsifying Detergent..... | 39 |
| SYMPPLICITY™ ENVY Super-Concentrated Laundry Detergent | 31 |
| SYMPPLICITY™ FRESH SUDS Super-Concentrated Laundry Detergent | 31 |
| SYMPPLICITY™ GREEN EARTH MACHINE DETERGENT Machine Detergent Concentrate | 35 |
| SYMPPLICITY™ GREEN EARTH POT & PAN DETERGENT Premium 100% Active Detergent..... | 31 |
| SYMPPLICITY™ HIGH TEMP RINSE AID Concentrated Liquid Rinse Aid | 35 |
| SYMPPLICITY™ KRYSTAL SOLID RINSE AID Solid Machine Rinse Aid..... | 35 |
| SYMPPLICITY™ IN-SYNC Premium Pot & Pan Detergent..... | 31 |
| SYMPPLICITY™ LOW TEMP MACHINE SANITIZER Machine Sanitizer..... | 36 |
| SYMPPLICITY™ L-S-R DELIMER Dish Machine Descaler | 37 |
| SYMPPLICITY™ MACHINE RINSE AID Dish Machine Rinse Aid | 35 |
| SYMPPLICITY™ METAL SAFE DETERGENT Concentrated All Temp Machine | 35 |
| SYMPPLICITY™ OXY DESTAINER POWDER Oxygen Stain Remover | 36 |
| SYMPPLICITY™ PINNACLE PRESOAK Solid Pre-Soak & Detarnisher..... | 36 |
| SYMPPLICITY™ PRO A for Organic Stains | 42 |
| SYMPPLICITY™ PRO G for Healthcare Related Stains..... | 42 |
| SYMPPLICITY™ PRO R for Rust and Metallic Stains | 42 |
| SYMPPLICITY™ PRO S for Inorganic Stains | 42 |
| SYMPPLICITY™ RECLAIM C for Colored Linens | 42 |

| Products | Page |
|--|------|
| SYMPPLICITY™ RECLAIM R for Rust | 42 |
| SYMPPLICITY™ RECLAIM W for White Linens | 42 |
| SYMPPLICITY™ SANIBET™ MULTI-RANGE Sanitizer • Disinfectant • Deodorizer..... | 32 |
| SYMPPLICITY™ SANITIZING SOFTENER 550 Softener Sanitizer..... | 41 |
| SYMPPLICITY™ SINK STATION Three Compartment Sink Dispenser..... | 37 |
| SYMPPLICITY™ SOFTENER Fabric Softener..... | 41 |
| SYMPPLICITY™ SOUR Laundry Neutralizer..... | 41 |
| SYMPPLICITY™ SOUR & SOFTENER Neutralizer and Fabric Softener..... | 41 |
| SYMPPLICITY™ SOUR ULTRA Super-Concentrated Laundry Sour | 41 |
| SYMPPLICITY™ TDS RINSE AID Concentrated Liquid Rinse Aid | 36 |
| SYMPPLICITY™ TILLY Hand Dishwashing Detergent | 31 |
| TILE CLEAN Deep Cleansing Hard Tile Cleaner | 9 |
| TOOL ADAPTOR PAD (TAP) For Use with CreteRx | 12 |
| TOP FLITE™ All Purpose Cleaner Concentrate | 18 |
| TOP FLITE™ PLUS All Purpose Cleaner..... | 18 |
| TOTE/TANK/DRUM PROPORTIONER..... | 23 |
| TRIFORCE Disinfectant • Bactericidal • Fungicidal | 27 |
| TRITON® HD 2 L DISPENSER Dispenser for 2 Liter Triton Bottles | 52 |
| TRITON® HD 4 L DISPENSER Dispenser for 4 Liter Triton Bottles | 52 |
| TYKOTE Wood Floor Bonding Agent | 16 |
| ULTRABLUE™ Antibacterial Foaming Skin Cleanser | 49 |
| ULTRA 2000™ Super Double Strength Degreaser | 22 |
| UNLOCK™ No-Rinse Floor Stripper..... | 8 |
| UNTOUCHABLE™ with SRT Black Mark Resistant Metal Interlocked Finish | 6 |
| URINAL PUCK BLUE DSL Probiotic Urinal Puck..... | 26 |
| VERSIFECT™ Disinfectant, Virucide, Cleaner and Deodorizer .. | 27 |
| WILD BERRY MALODOR COUNTERACTANT Powdered Portable Toilet | 26 |
| XHD HAND CLEANER Extra Heavy Duty with Soy and Walnut | 51 |

Automatic Scrubbers **Page**

| | |
|---|----|
| CREWMAN™ AS20B 20" Automatic Scrubber w/ Brush Assist | 55 |
| GENESYS™ 20D 20" Automatic Scrubber w/ Pad Assist | 54 |
| GENESYS™ 20DT 20" Automatic Scrubber w/ Transaxle Drive | 54 |
| GENESYS™ 20ORB 20" Orbital w/ Traction Drive | 54 |
| GENESYS™ 26D 26" Disk Auto Scrubber | 55 |
| GENESYS™ 28D 28" Disk Auto Scrubber | 55 |
| GENESYS™ 32D 32" Disk Auto Scrubber | 55 |
| GENESYS™ 28ORB 28" Orbital Scrubber | 55 |
| STEALTH™ DRS21BT MicroRiding Scrubber | 56 |
| STEALTH™ DRS26BT Automatic Rider Scrubber | 56 |
| STEALTH™ DRS32BT Automatic Rider Scrubber | 56 |

Burnishers **Page**

| | |
|--|----|
| CREWMAN™ 1600 20" High Speed Burnisher | 56 |
| CREWMAN™ 2000 20" High Speed Burnisher | 56 |
| OPTIMA XR SERIES High Speed Burnishers | 56 |

Carpet Machines **Page**

| | |
|--|----|
| FIBERPRO® 8 Self Contained Carpet Extractor | 59 |
| FIBERPRO® 20 Self Contained Carpet Extractor | 59 |
| FIBERPRO® CARPET SPOTTER Carpet Spotter | 59 |
| FIBERPRO® AIR MOVER Floor Dryer | 59 |

Concrete & Terrazzo Polishers **Page**

| | |
|--|----|
| CRETE RX™ CM30 Concrete / Terrazzo Maintenance Machine | 58 |
|--|----|

Dry Vacuums **Page**

| | |
|---|----|
| BAC PAC LITE 5 Liter Bac Pac Vacuum | 58 |
| POWERUP 14 Upright Vacuum | 58 |

Floor Machines **Page**

| | |
|--|----|
| CREWMAN™ 17HD Standard Floor Machine | 57 |
| CREWMAN™ 20HD Standard Floor Machine | 57 |
| FOREMAN® 20DS Dual Speed Floor Machine | 57 |

Floor Strippers **Page**

| | |
|---|----|
| BIG BERTHA® 30" Stripping Machine | 57 |
| CREWMAN™ 20 ORB 20" Orbital Strip Machine | 57 |
| CREWMAN™ 28 ORB 28" Orbital Strip Machine | 57 |
| LIL BERTHA® 24" Stripping Machine | 57 |

Small Area Autoscrubbers **Page**

| | |
|--|----|
| GENESYS™ 15 15" Cylindrical Automatic Scrubber | 54 |
| GENIE® B All Purpose Automatic Scrubber | 54 |
| MOTOMOP® Small Area Cleaning Machine | 54 |

Wet/Dry Vacuums **Page**

| | |
|--|----|
| WORKMAN® 20 Wet / Dry Vacuum | 58 |
|--|----|

Contents

| | |
|--------------------------------|---------|
| <i>Floor Care</i> | 4 - 6 |
| <i>General Cleaning</i> | 7 - 29 |
| <i>Food Service / Warewash</i> | 30 - 37 |
| <i>Laundry</i> | 38 - 42 |
| <i>Dilution Control</i> | 43 - 47 |
| <i>Hand Hygiene</i> | 48 - 52 |
| <i>Equipment</i> | 53 - 59 |
| <i>Product Index</i> | 60 - 64 |





888-GO BETCO | betco.com

©2023 Betco Corporation
All Rights Reserved.
400 Van Camp Road
Bowling Green, Ohio 43402
Item #90211-92



08/2023