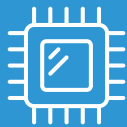




# I-Series 3 with Intel®

All-in-One Interactive Display



**Intel 12th Gen  
Processors**



**IPS PCAP  
Touchscreen**



**Fanless, IP54  
Rated Design**

## Product Overview

Elo's I-Series delivers reliable, enterprise-grade security and performance powered by Intel 12th gen processors including Celeron, Core i3, i5 and i7. Designed with a sleek and durable fixed tablet form factor, the I-Series offer models that support Windows, ChromeOS Flex and Linux (SuSE, Ubuntu and Red Hat). Available in sizes ranging from 15" to 24" with square and wide aspect ratios, with and without stands, the I-Series offers a modular platform with versatility to fit almost any application - from point-of-sale and interactive signage to self-service and automation controls.

**Available in 15" and 17" square aspect and 15", 22" and 24" wide aspect sizes with sleek edge-to-edge glass PCAP (10 touch) touchscreen**

**Elo Edge Connect™ compatibility - payment devices, barcode scanners, cameras, RFID, fingerprint reader, status lights and more**

**Modular design offering with stand and without stand options for flexible mounting in portrait, landscape and table-top orientation**

## 15-inch (4:3) I-Series 3 with Intel (With Stand)

| Model                                 | i2 Models   | i3 Models  | i5 Models  | i7 Models   |
|---------------------------------------|---|--|--|---|
| Enclosure Color                       | Black   |  |  |   |
| Display                               | 15.0" / 381 mm diagonal, active matrix TFT LED LCD  |  |  |   |
| Aspect Ratio                          | 4:3 (standard)  |  |  |   |
| Active Display Area (W x H)           | 11.97" x 8.98" / 304.1 mm x 228.1 mm  |  |  |   |
| Native (optimal) Resolution           | 1024 x 768 @ 60Hz   |  |  |   |
| Touch Technologies                    | 10-touch TouchPro® PCAP   |  |  |   |
| Colors                                | 262K  |  |  |   |
| Brightness (typical)                  | LCD panel: 400 nits; TouchPro PCAP: 340 nits  |  |  |   |
| Response Time Total (typical)         | 23 msec   |  |  |   |
| Viewing Angle (typical)               | Horizontal: 80°/80° or 160° total / Vertical: 70°/80° or 150° total   |  |  |   |
| Contrast Ratio (typical)              | 800:1   |  |  |   |
| Processor                             | Intel Celeron Processor 7305L (8M Smart Cache, up to 1.10 GHz)  | Intel Core i3-1215UL Processor (10M Smart Cache, up to 4.40 GHz by Intel Turbo Boost Technology 2.0) | Intel Core i5-1245UL Processor (12M Smart Cache, up to 4.40 GHz by Intel Turbo Boost Technology 2.0) with Intel vPro™ Support        | Intel Core i7-1265UL Processor (12M Smart Cache, up to 4.80 GHz by Intel Turbo Boost Technology 2.0) with Intel vPro™ Support |
| Graphics                              | Intel UHD Graphics  |  | Intel Iris Xe Graphics eligible: to use the Intel Iris Xe Graphics, the system must be populated with 128-bit (dual channel) memory. |   |
| BIOS                                  | AMI   |  |  |   |
| Memory (RAM)                          | 8GB 4800MHz DDR5 SO-DIMM on 1 of 2 slots<br>(Expandable to 64GB maximum <sup>1</sup> on 2 slots) <sup>2</sup><br><sup>1</sup> Maximum memory using 2 slots. Expandable up to 64GB maximum, SO-DIMM DDR5-4800.<br><sup>2</sup> Check brand of the memory included in your unit before purchasing the memory kit.   |  |  | 16GB 4800MHz DDR5 SO-DIMM on 1 of 2 slots   |
| Storage                               | 128GB M.2 PCIe (NVMe) SSD, 80 TBW, 256GB M.2 PCIe (NVMe) SSD, 160 TBW<br>GB equals one billion bytes when referring to storage capacity. Accessible capacity may be less.   |  |  |   |
| Operating Systems                     | No Operating System, Microsoft Windows 10 IoT Enterprise LTSC 64-bit, Windows 11 Professional 64-bit  |  |  |   |
| I/O Ports                             | 1x RJ45 LAN (Gigabit) Port, 4x USB 3.0 Ports, 4x Micro USB 2.0 Ports for Elo Edge Connect peripherals, 1x 24V Powered USB Port, 2x 12V Powered USB Ports, 1x RJ50 Powered Serial Port, 1x 12V/24V Cash Drawer Port (EPSON Pinout, 24V default; selectable by BIOS setting), 1x Full-function USB-C Port (Power up to 27W, USB 3.0, Display Port, Additional Video Out), 1x Audio Port (3.5 mm headset jack) |  |  |   |
| Wireless Connectivity                 | 802.11 a/b/g/n/ac/ax 2.4GHz, 5GHz and 6GHz, Bluetooth 5.3   |  |  |   |
| TPM                                   | TPM 2.0   |  |  |   |
| RAID                                  | Intel Volume Management Device (VMD) technology for select SKUs   |  |  |   |
| AMT                                   | N/A   |  | Intel Active Management Technology (AMT)   |   |
| Audio                                 | 2x 2W internal speakers   |  |  |   |
| Power                                 | External 24VDC universal-type power supply brick, AC input voltage: 100-240 VAC, Input frequency: 50-60 Hz, Maximum output power: 180W  |  |  |   |
| Power Consumption                     | Without peripherals* - On Celeron: 34W, On i3: 49W, On i5: 50W, On i7: 50W, Sleep: < 5W, Off: < 0.5W<br>*Condition for i5 & i7 models with 16GB DIMM/256GB SSD, others with 8GB DIMM/128GB SSD  |  |  |   |
| Dimensions                            | Unpackaged: 14.15" x 14.02" x 7.78" / 359.5 mm x 356.0 mm x 197.5 mm, Packaged: 19.6" x 19.2" x 13.6" / 497 mm x 487 mm x 345 mm  |  |  |   |
| Weight                                | Unpacked: 14.77 lbs / 6.7 kg, Packaged: 17.42 lbs / 7.9 kg  |  |  |   |
| Temperature                           | Operating: 0°C to 35°C / 32°F to 95°F, Storage: -20°C to 60°C / -4°F to 140°F<br>Note: the thermal report pass airflow 0.5m/s condition. For No OS SKUs, recommend using the Elo optimize TDP tool for better performance.  |  |  |   |
| Humidity (non-condensing)             | Operating: 20% to 80%; Storage: 5% to 95% (38.7°C max wet bulb temperature)   |  |  |   |
| Regulatory approvals and declarations | Canada cUL, IC; United States UL, FCC; Germany TUV; Europe CE; Australia RCM; United Kingdom UKCA; International CB; Argentina S-Mark; Brazil ANATEL; Japan VCCI, MIC; China CCC, SRRC; Mexico NOM; RoHS CoC; New Zealand R-NZ; Singapore IMDA for i5 only  |  |  |   |
| Mounting Options                      | 75mm VESA mount   |  |  |   |
| Real-Time Clock                       | Replaceable CR2450 lithium metal battery for clock  |  |  |   |
| Warranty                              | 3-year  |  |  |   |
| Extended Warranties                   | 4 year: E819598; 5 year: E819795; 3 year + AUR: E820186; 4 year + AUR: E820388; 5 year + AUR: E820582   |  |  |   |
| MTBF                                  | 50,000 hours demonstrated   |  |  |   |
| Other Features                        | Serviceable internal components, Models with a stand for desktop application, Kensington lock   |  |  |   |
| What's in the box                     | I-Series with stand, North America Power Cord, European Power Cord, Power Adapter - 180W, Cable RJ-50 to DB-9, Quick Installation Guide (QIG), Cable tie, CFD mounting screw, VESA mounting screw, VESA cover, VESA cover mounting screw  |  |  |   |

## Ordering Information

| Part Number | Processor | OS                  | Memory | Storage | Surface Treatment |
|-------------|-----------|---------------------|--------|---------|-------------------|
| E700385     | 7305L     | No OS               | 8GB    | 128GB   | Anti-glare        |
| E700571     | 7305L     | Window 10 2021 LTSC | 8GB    | 128GB   | Anti-glare        |
| E700774     | i3-1215UL | No OS               | 8GB    | 128GB   | Anti-glare        |
| E700960     | i3-1215UL | Window 10 2021 LTSC | 8GB    | 128GB   | Anti-glare        |
| E701155     | i5-1245UL | No OS               | 8GB    | 128GB   | Anti-glare        |
| E701351     | i5-1245UL | Window 10 2021 LTSC | 8GB    | 128GB   | Anti-glare        |
| E701555     | i7-1265UL | No OS               | 16GB   | 256GB   | Anti-glare        |
| E701737     | i7-1265UL | Window 10 2021 LTSC | 16GB   | 256GB   | Anti-glare        |

## 15-inch (16:9) I-Series 3 with Intel (With Stand)

| Model                                 | i2 Models   | i3 Models  | i5 Models  | i7 Models   |
|---------------------------------------|---|--|--|---|
| Enclosure Color                       | Black   |  |  |   |
| Display                               | 15.6" / 396.24 mm diagonal, active matrix TFT LED LCD   |  |  |   |
| Aspect Ratio                          | 16:9 (standard)   |  |  |   |
| Active Display Area (W x H)           | 13.55" x 7.62" / 344.2 mm x 193.5 mm  |  |  |   |
| Native (optimal) Resolution           | 1920 x 1080 @ 60Hz  |  |  |   |
| Touch Technologies                    | 10-touch TouchPro® PCAP   |  |  |   |
| Colors                                | 16.2M   |  |  |   |
| Brightness (typical)                  | LCD panel: 350 nits, TouchPro PCAP: 297.5 nits  |  |  |   |
| Response Time Total (typical)         | 25 msec   |  |  |   |
| Viewing Angle (typical)               | Horizontal: 85°/85° or 170° total / Vertical: 85°/85° or 170° total   |  |  |   |
| Contrast Ratio (typical)              | 1000:1  |  |  |   |
| Processor                             | Intel Celeron Processor 7305L (8M Smart Cache, up to 1.10 GHz)  | Intel Core i3-1215UL Processor (10M Smart Cache, up to 4.40 GHz by Intel Turbo Boost Technology 2.0) | Intel Core i5-1245UL Processor (12M Smart Cache, up to 4.40 GHz by Intel Turbo Boost Technology 2.0) with Intel vPro™ Support        | Intel Core i7-1265UL Processor (12M Smart Cache, up to 4.80 GHz by Intel Turbo Boost Technology 2.0) with Intel vPro™ Support |
| Graphics                              | Intel UHD Graphics  |  | Intel Iris Xe Graphics eligible: to use the Intel Iris Xe Graphics, the system must be populated with 128-bit (dual channel) memory. |   |
| BIOS                                  | AMI   |  |  |   |
| Memory (RAM)                          | 8GB 4800MHz DDR5 SO-DIMM on 1 of 2 slots<br>(Expandable to 64GB maximum <sup>1</sup> on 2 slots) <sup>2</sup><br><sup>1</sup> Maximum memory using 2 slots. Expandable up to 64GB maximum, SO-DIMM DDR5-4800.<br><sup>2</sup> Check brand of the memory included in your unit before purchasing the memory kit.   |  |  | 16GB 4800MHz DDR5 SO-DIMM on 1 of 2 slots   |
| Storage                               | 128GB M.2 PCIe (NVMe) SSD, 80 TBW, 256GB M.2 PCIe (NVMe) SSD, 160 TBW<br>GB equals one billion bytes when referring to storage capacity. Accessible capacity may be less.   |  |  |   |
| Operating Systems                     | No Operating System, Microsoft Windows 10 IoT Enterprise LTSC 64-bit, Windows 11 Professional 64-bit  |  |  |   |
| I/O Ports                             | 1x RJ45 LAN (Gigabit) Port, 4x USB 3.0 Ports, 4x Micro USB 2.0 Ports for Elo Edge Connect peripherals, 1x 24V Powered USB Port, 2x 12V Powered USB Ports, 1x RJ50 Powered Serial Port, 1x 12V/24V Cash Drawer Port (EPSON Pinout, 24V default; selectable by BIOS setting), 1x Full-function USB-C Port (Power up to 27W, USB 3.0, Display Port, Additional Video Out), 1x Audio Port (3.5 mm headset jack) |  |  |   |
| Wireless Connectivity                 | 802.11 a/b/g/n/ac/ax 2.4GHz, 5GHz and 6GHz, Bluetooth 5.3   |  |  |   |
| TPM                                   | TPM 2.0   |  |  |   |
| RAID                                  | Intel Volume Management Device (VMD) technology for select SKUs   |  |  |   |
| AMT                                   | N/A   |  | Intel Active Management Technology (AMT)   |   |
| Audio                                 | 2x 2W internal speakers   |  |  |   |
| Power                                 | External 24VDC universal-type power supply brick, AC input voltage: 100-240 VAC, Input frequency: 50-60 Hz, Maximum output power: 180W  |  |  |   |
| Power Consumption                     | Without peripherals* - On Celeron: 33W, On i3: 43W, On i5: 43W, On i7: 46W, Sleep: < 5W, Off: < 0.5W<br>*Condition for i7 models with 16GB DIMM/256GB SSD, others with 8GB DIMM/128GB SSD   |  |  |   |
| Dimensions                            | Unpackaged: 15.12" x 13.32" x 7.78" / 384.1 mm x 338.4 mm x 197.5 mm, Packaged: 19.6" x 19.2" x 13.6" / 497 mm x 487 mm x 345 mm  |  |  |   |
| Weight                                | Unpacked: 14.08 lbs / 6.4 kg, Packaged: 19.58 lbs / 8.9 kg  |  |  |   |
| Temperature                           | Operating: 0°C to 35°C / 32°F to 95°F, Storage: -20°C to 60°C / -4°F to 140°F<br>Note: the thermal report pass airflow 0.5m/s condition. For No OS SKUs, recommend using the Elo optimize TDP tool for better performance.  |  |  |   |
| Humidity (non-condensing)             | Operating: 20% to 80%; Storage: 5% to 95% (38.7°C max wet bulb temperature)   |  |  |   |
| Energy Star Certified                 | Energy Star 8.0 certified configurations available  |  |  |   |
| Regulatory approvals and declarations | Canada cUL, IC; United States UL, FCC; Germany TUV; Europe CE; Australia RCM; United Kingdom UKCA; International CB; Argentina S-Mark; Brazil ANATEL; Japan VCCI, MIC; China CCC, SRRC; Mexico NOM; RoHS CoC; New Zealand R-NZ; Singapore IMDA for i5 only  |  |  |   |
| Mounting Options                      | 75mm VESA mount   |  |  |   |
| Real-Time Clock                       | Replaceable CR2450 lithium metal battery for clock  |  |  |   |
| Warranty                              | 3-year  |  |  |   |
| Extended Warranties                   | 4 year: E819598; 5 year: E819795; 3 year + AUR: E820186; 4 year + AUR: E820388; 5 year + AUR: E820582   |  |  |   |
| MTBF                                  | 50,000 hours demonstrated   |  |  |   |
| Other Features                        | Serviceable internal components, Models with a stand for desktop application, Kensington lock   |  |  |   |
| What's in the box                     | I-Series with stand, North America Power Cord, European Power Cord, Power Adapter - 180W, Cable RJ-50 to DB-9, Quick Installation Guide (QIG), Cable tie, CFD mounting screw, VESA mounting screw, VESA cover, VESA cover mounting screw  |  |  |   |

## Ordering Information

| Part Number | Processor | OS                  | Memory | Storage | Surface Treatment |
|-------------|-----------|---------------------|--------|---------|-------------------|
| E705229     | 7305L     | No OS               | 8GB    | 128GB   | Anti-glare        |
| E705428     | 7305L     | Window 10 2021 LTSC | 8GB    | 128GB   | Anti-glare        |
| E705627     | i3-1215UL | No OS               | 8GB    | 128GB   | Anti-glare        |
| E705831     | i3-1215UL | Window 10 2021 LTSC | 8GB    | 128GB   | Anti-glare        |
| E744038     | i3-1215UL | Window 10 2021 LTSC | 8GB    | 256GB   | Anti-glare        |
| E706031     | i5-1245UL | No OS               | 8GB    | 128GB   | Anti-glare        |
| E706223     | i5-1245UL | Window 10 2021 LTSC | 8GB    | 128GB   | Anti-glare        |
| E743853     | i5-1245UL | Window 10 2021 LTSC | 16GB   | 256GB   | Anti-glare        |
| E940867     | i5-1245UL | Window 10 2021 LTSC | 16GB   | 512GB   | Anti-glare        |
| E706421     | i7-1265UL | No OS               | 16GB   | 256GB   | Anti-glare        |
| E706613     | i7-1265UL | Window 10 2021 LTSC | 16GB   | 256GB   | Anti-glare        |

Elo reserves the right to change or update, without notice, any information contained herein; to change, without notice, the design, construction, materials, processing or specifications of any products; and to discontinue or limit production or distribution of any products. Elo and the Elo logo are either trademarks or registered trademarks of Elo Touch Solutions, Inc. All other trademarks are the property of their respective owners.  
© 2024 Elo Touch Solutions, Inc. All rights reserved. 24101AES00177



## 15-inch (16:9) I-Series 3 with Intel (Without Stand)

| Model                                 | i2 Models   | i3 Models  | i5 Models  | i7 Models   |
|---------------------------------------|---|--|--|---|
| Enclosure Color                       | Black   |  |  |   |
| Display                               | 15.6" / 396.24 mm diagonal, active matrix TFT LED LCD   |  |  |   |
| Aspect Ratio                          | 16:9 (standard)   |  |  |   |
| Active Display Area (W x H)           | 13.55" x 7.62" / 344.2 mm x 193.5 mm  |  |  |   |
| Native (optimal) Resolution           | 1920 x 1080 @ 60Hz  |  |  |   |
| Touch Technologies                    | 10-touch TouchPro® PCAP   |  |  |   |
| Colors                                | 16.2M   |  |  |   |
| Brightness (typical)                  | LCD panel: 350 nits, TouchPro PCAP: 297.5 nits  |  |  |   |
| Response Time Total (typical)         | 25 msec   |  |  |   |
| Viewing Angle (typical)               | Horizontal: 85°/85° or 170° total / Vertical: 85°/85° or 170° total   |  |  |   |
| Contrast Ratio (typical)              | 1000:1  |  |  |   |
| Processor                             | Intel Celeron Processor 7305L (8M Smart Cache, up to 1.10 GHz)  | Intel Core i3-1215UL Processor (10M Smart Cache, up to 4.40 GHz by Intel Turbo Boost Technology 2.0) | Intel Core i5-1245UL Processor (12M Smart Cache, up to 4.40 GHz by Intel Turbo Boost Technology 2.0) with Intel vPro™ Support        | Intel Core i7-1265UL Processor (12M Smart Cache, up to 4.80 GHz by Intel Turbo Boost Technology 2.0) with Intel vPro™ Support |
| Graphics                              | Intel UHD Graphics  |  | Intel Iris Xe Graphics eligible: to use the Intel Iris Xe Graphics, the system must be populated with 128-bit (dual channel) memory. |   |
| BIOS                                  | AMI   |  |  |   |
| Memory (RAM)                          | 8GB 4800MHz DDR5 SO-DIMM on 1 of 2 slots<br>(Expandable to 64GB maximum <sup>1</sup> on 2 slots) <sup>2</sup><br><sup>1</sup> Maximum memory using 2 slots. Expandable up to 64GB maximum, SO-DIMM DDR5-4800.<br><sup>2</sup> Check brand of the memory included in your unit before purchasing the memory kit. |  |  | 16GB 4800MHz DDR5 SO-DIMM on 1 of 2 slots   |
| Storage                               | 128GB M.2 PCIe (NVMe) SSD, 80 TBW, 256GB M.2 PCIe (NVMe) SSD, 160 TBW<br>GB equals one billion bytes when referring to storage capacity. Accessible capacity may be less.   |  |  |   |
| Operating Systems                     | No Operating System, Microsoft Windows 10 IoT Enterprise LTSC 64-bit, Windows 11 Professional 64-bit  |  |  |   |
| I/O Ports                             | 1x RJ45 LAN (Gigabit) Port, 4x USB 3.0 Ports, 4x Micro USB 2.0 Ports for Elo Edge Connect peripherals, 1x RJ50 Powered Serial Port, 1x Full-function USB-C Port (Power up to 27W, USB 3.0, Display Port, Additional Video Out), 1x Audio Port (3.5 mm headset jack)   |  |  |   |
| Wireless Connectivity                 | 802.11 a/b/g/n/ac/ax 2.4GHz, 5GHz and 6GHz, Bluetooth 5.3   |  |  |   |
| TPM                                   | TPM 2.0   |  |  |   |
| RAID                                  | Intel Volume Management Device (VMD) technology for select SKUs   |  |  |   |
| AMT                                   | N/A   |  | Intel Active Management Technology (AMT)   |   |
| Audio                                 | 2x 2W internal speakers   |  |  |   |
| Power                                 | External 24VDC universal-type power supply brick, AC input voltage: 100-240 VAC, Input frequency: 50-60 Hz, Maximum output power: 180W  |  |  |   |
| Power Consumption                     | Without peripherals* - On Celeron: 33W, On i3: 43W, On i5: 43W, On i7: 46W, Sleep: < 5W, Off: < 0.5W<br>*Condition for i7 models with 16GB DIMM/256GB SSD, others with 8GB DIMM/128GB SSD   |  |  |   |
| Dimensions                            | Unpackaged: 15.12" x 9.75" x 1.46" / 384.1 mm x 247.7 mm x 37.2 mm, Packaged: 18.9" x 7.8" x 13.6" / 481 mm x 197 mm x 345 mm   |  |  |   |
| Weight                                | Unpacked: 6.82 lbs / 3.1 kg, Packaged: 11 lbs / 5 kg  |  |  |   |
| Temperature                           | Operating: 0°C to 35°C / 32°F to 95°F, Storage: -20°C to 60°C / -4°F to 140°F<br>Note: the thermal report pass airflow 0.5m/s condition. For No OS SKUs, recommend using the Elo optimize TDP tool for better performance.  |  |  |   |
| Humidity (non-condensing)             | Operating: 20% to 80%; Storage: 5% to 95% (38.7°C max wet bulb temperature)   |  |  |   |
| Energy Star Certified                 | Energy Star 8.0 certified configurations available  |  |  |   |
| Regulatory approvals and declarations | Canada cUL, IC; United States UL, FCC; Germany TUV; Europe CE; Australia RCM; United Kingdom UKCA; International CB; Argentina S-Mark; Brazil ANATEL; Japan VCCI, MIC; China CCC, SRRC; Mexico NOM; RoHS CoC; New Zealand R-NZ; Singapore IMDA for i5 only  |  |  |   |
| Mounting Options                      | 75mm VESA mount   |  |  |   |
| Real-Time Clock                       | Replaceable CR2450 lithium metal battery for clock  |  |  |   |
| Warranty                              | 3-year  |  |  |   |
| Extended Warranties                   | 4 year: E819598; 5 year: E819795; 3 year + AUR: E820186; 4 year + AUR: E820388; 5 year + AUR: E820582   |  |  |   |
| MTBF                                  | 50,000 hours demonstrated   |  |  |   |
| Other Features                        | Serviceable internal components, Models with a stand for desktop application, Kensington lock   |  |  |   |
| What's in the box                     | I-Series, North America Power Cord, European Power Cord, Power Adapter - 180W, Cable RJ-50 to DB-9, Quick Installation Guide (QIG), Cable tie, VESA mounting screw  |  |  |   |

## Ordering Information

| Part Number | Processor | OS                  | Memory | Storage | Surface Treatment |
|-------------|-----------|---------------------|--------|---------|-------------------|
| E605332     | 7305L     | No OS               | 8GB    | 128GB   | Clear             |
| E605520     | 7305L     | Window 10 2021 LTSC | 8GB    | 128GB   | Clear             |
| E605919     | i3-1215UL | No OS               | 8GB    | 128GB   | Clear             |
| E606120     | i3-1215UL | Window 10 2021 LTSC | 8GB    | 128GB   | Clear             |
| E980839     | i3-1215UL | Window 10 2021 LTSC | 8GB    | 256GB   | Clear             |
| E606323     | i5-1245UL | No OS               | 8GB    | 128GB   | Clear             |
| E606511     | i5-1245UL | Window 10 2021 LTSC | 8GB    | 128GB   | Clear             |
| E836250     | i5-1245UL | Window 10 2021 LTSC | 16GB   | 256GB   | Clear             |

## 17-inch (5:4) I-Series 3 with Intel (With Stand)

| Model                                 | i2 Models   | i3 Models  | i5 Models  | i7 Models   |
|---------------------------------------|---|--|--|---|
| Enclosure Color                       | Black   |  |  |   |
| Display                               | 17.0" / 431.8 mm diagonal, active matrix TFT LED LCD  |  |  |   |
| Aspect Ratio                          | 5:4 (standard)  |  |  |   |
| Active Display Area (W x H)           | 13.3" x 10.64" / 337.9 mm x 270.3 mm  |  |  |   |
| Native (optimal) Resolution           | 1280 x 1024 @ 60Hz  |  |  |   |
| Touch Technologies                    | 10-touch TouchPro® PCAP   |  |  |   |
| Colors                                | 16.7M   |  |  |   |
| Brightness (typical)                  | LCD panel: 250 nits, TouchPro PCAP: 212.5 nits  |  |  |   |
| Response Time Total (typical)         | 25 msec   |  |  |   |
| Viewing Angle (typical)               | Horizontal: 85°/85° or 170° total / Vertical: 80°/80° or 160° total   |  |  |   |
| Contrast Ratio (typical)              | 1000:1  |  |  |   |
| Processor                             | Intel Celeron Processor 7305L (8M Smart Cache, up to 1.10 GHz)  | Intel Core i3-1215UL Processor (10M Smart Cache, up to 4.40 GHz by Intel Turbo Boost Technology 2.0) | Intel Core i5-1245UL Processor (12M Smart Cache, up to 4.40 GHz by Intel Turbo Boost Technology 2.0) with Intel vPro™ Support        | Intel Core i7-1265UL Processor (12M Smart Cache, up to 4.80 GHz by Intel Turbo Boost Technology 2.0) with Intel vPro™ Support |
| Graphics                              | Intel UHD Graphics  |  | Intel Iris Xe Graphics eligible: to use the Intel Iris Xe Graphics, the system must be populated with 128-bit (dual channel) memory. |   |
| BIOS                                  | AMI   |  |  |   |
| Memory (RAM)                          | 8GB 4800MHz DDR5 SO-DIMM on 1 of 2 slots<br>(Expandable to 64GB maximum <sup>1</sup> on 2 slots) <sup>2</sup><br><sup>1</sup> Maximum memory using 2 slots. Expandable up to 64GB maximum, SO-DIMM DDR5-4800.<br><sup>2</sup> Check brand of the memory included in your unit before purchasing the memory kit.   |  |  | 16GB 4800MHz DDR5 SO-DIMM on 1 of 2 slots   |
| Storage                               | 128GB M.2 PCIe (NVMe) SSD, 80 TBW, 256GB M.2 PCIe (NVMe) SSD, 160 TBW<br>GB equals one billion bytes when referring to storage capacity. Accessible capacity may be less.   |  |  |   |
| Operating Systems                     | No Operating System, Microsoft Windows 10 IoT Enterprise LTSC 64-bit, Windows 11 Professional 64-bit  |  |  |   |
| I/O Ports                             | 1x RJ45 LAN (Gigabit) Port, 4x USB 3.0 Ports, 4x Micro USB 2.0 Ports for Elo Edge Connect peripherals, 1x 24V Powered USB Port, 2x 12V Powered USB Ports, 1x RJ50 Powered Serial Port, 1x 12V/24V Cash Drawer Port (EPSON Pinout, 24V default; selectable by BIOS setting), 1x Full-function USB-C Port (Power up to 27W, USB 3.0, Display Port, Additional Video Out), 1x Audio Port (3.5 mm headset jack) |  |  |   |
| Wireless Connectivity                 | 802.11 a/b/g/n/ac/ax 2.4GHz, 5GHz and 6GHz, Bluetooth 5.3   |  |  |   |
| TPM                                   | TPM 2.0   |  |  |   |
| RAID                                  | Intel Volume Management Device (VMD) technology for select SKUs   |  |  |   |
| AMT                                   | N/A   |  | Intel Active Management Technology (AMT)   |   |
| Audio                                 | 2x 2W internal speakers   |  |  |   |
| Power                                 | External 24VDC universal-type power supply brick, AC input voltage: 100-240 VAC, Input frequency: 50-60 Hz, Maximum output power: 180W  |  |  |   |
| Power Consumption                     | Without peripherals* - On Celeron: 33W, On i3: 47W, On i5: 50W, On i7: 54W, Sleep: < 5W, Off: < 0.5W<br>*Condition for i7 models with 16GB DIMM/256GB SSD, others with 8GB DIMM/128GB SSD   |  |  |   |
| Dimensions                            | Unpackaged: 15.49" x 14.61" x 8.09" / 393.4 mm x 371.2 mm x 205.6 mm, Packaged: 20.8" x 21.2" x 12.4" / 529 mm x 539 mm x 315 mm  |  |  |   |
| Weight                                | Unpacked: 21.16 lbs / 9.6 kg, Packaged: 27.34 lbs / 12.4 kg   |  |  |   |
| Temperature                           | Operating: 0°C to 35°C / 32°F to 95°F, Storage: -20°C to 60°C / -4°F to 140°F<br>Note: the thermal report pass airflow 0.5m/s condition. For No OS SKUs, recommend using the Elo optimize TDP tool for better performance.  |  |  |   |
| Humidity (non-condensing)             | Operating: 20% to 80%; Storage: 5% to 95% (38.7°C max wet bulb temperature)   |  |  |   |
| Energy Star Certified                 | Energy Star 8.0 certified configurations available  |  |  |   |
| Regulatory approvals and declarations | Canada cUL, IC; United States UL, FCC; Germany TUV; Europe CE; Australia RCM; United Kingdom UKCA; International CB; Argentina S-Mark; Brazil ANATEL; Japan VCCI, MIC; China CCC, SRRC; Mexico NOM; RoHS CoC; New Zealand R-NZ  |  |  |   |
| Mounting Options                      | 100mm VESA mount  |  |  |   |
| Real-Time Clock                       | Replaceable CR2450 lithium metal battery for clock  |  |  |   |
| Warranty                              | 3-year  |  |  |   |
| Extended Warranties                   | 4 year: E819598; 5 year: E819795; 3 year + AUR: E820186; 4 year + AUR: E820388; 5 year + AUR: E820582   |  |  |   |
| MTBF                                  | 50,000 hours demonstrated   |  |  |   |
| Other Features                        | Serviceable internal components, Models with a stand for desktop application, Kensington lock   |  |  |   |
| What's in the box                     | I-Series with stand, North America Power Cord, European Power Cord, Power Adapter - 180W, Cable RJ-50 to DB-9, Quick Installation Guide (QIG), Cable tie, CFD mounting screw, VESA mounting screw, VESA cover, VESA cover mounting screw  |  |  |   |

## Ordering Information

| Part Number | Processor | OS                  | Memory | Storage | Surface Treatment |
|-------------|-----------|---------------------|--------|---------|-------------------|
| E708361     | 7305L     | No OS               | 8GB    | 128GB   | Anti-glare        |
| E708554     | 7305L     | Window 10 2021 LTSC | 8GB    | 128GB   | Anti-glare        |
| E708749     | i3-1215UL | No OS               | 8GB    | 128GB   | Anti-glare        |
| E708953     | i3-1215UL | Window 10 2021 LTSC | 8GB    | 128GB   | Anti-glare        |
| E709150     | i5-1245UL | No OS               | 8GB    | 128GB   | Anti-glare        |
| E709349     | i5-1245UL | Window 10 2021 LTSC | 8GB    | 128GB   | Anti-glare        |
| E869447     | i5-1245UL | Window 10 2021 LTSC | 16GB   | 256GB   | Anti-glare        |
| E709537     | i7-1265UL | No OS               | 16GB   | 256GB   | Anti-glare        |
| E709726     | i7-1265UL | Window 10 2021 LTSC | 16GB   | 256GB   | Anti-glare        |

## 22-inch (16:9) I-Series 3 with Intel (With Stand)

| Model                                 | i2 Models   | i3 Models  | i5 Models  | i7 Models   |
|---------------------------------------|---|--|--|---|
| Enclosure Color                       | Black   |  |  |   |
| Display                               | 21.5" / 546.1 mm diagonal, active matrix TFT LED LCD  |  |  |   |
| Aspect Ratio                          | 16:9 (standard)   |  |  |   |
| Active Display Area (W x H)           | 18.74" x 10.54" / 476.1 mm x 267.8 mm   |  |  |   |
| Native (optimal) Resolution           | 1920 x 1080 @ 60Hz  |  |  |   |
| Touch Technologies                    | 10-touch TouchPro® PCAP   |  |  |   |
| Colors                                | 16.7M   |  |  |   |
| Brightness (typical)                  | LCD panel: 250 nits, TouchPro PCAP: 212.5 nits  |  |  |   |
| Response Time Total (typical)         | 14 msec   |  |  |   |
| Viewing Angle (typical)               | Horizontal: 89°/89° or 178° total / Vertical: 89°/89° or 178° total   |  |  |   |
| Contrast Ratio (typical)              | 1000:1  |  |  |   |
| Processor                             | Intel Celeron Processor 7305L (8M Smart Cache, up to 1.10 GHz)  | Intel Core i3-1215UL Processor (10M Smart Cache, up to 4.40 GHz by Intel Turbo Boost Technology 2.0) | Intel Core i5-1245UL Processor (12M Smart Cache, up to 4.40 GHz by Intel Turbo Boost Technology 2.0) with Intel vPro™ Support        | Intel Core i7-1265UL Processor (12M Smart Cache, up to 4.80 GHz by Intel Turbo Boost Technology 2.0) with Intel vPro™ Support |
| Graphics                              | Intel UHD Graphics  |  | Intel Iris Xe Graphics eligible: to use the Intel Iris Xe Graphics, the system must be populated with 128-bit (dual channel) memory. |   |
| BIOS                                  | AMI   |  |  |   |
| Memory (RAM)                          | 8GB 4800MHz DDR5 SO-DIMM on 1 of 2 slots  |  |  | 16GB 4800MHz DDR5 SO-DIMM on 1 of 2 slots   |
|                                       | (Expandable to 64GB maximum <sup>1</sup> on 2 slots) <sup>2</sup>   |  |  |   |
|                                       | <sup>1</sup> Maximum memory using 2 slots. Expandable up to 64GB maximum, SO-DIMM DDR5-4800.<br><sup>2</sup> Check brand of the memory included in your unit before purchasing the memory kit.  |  |  |   |
| Storage                               | 128GB M.2 PCIe (NVMe) SSD, 80 TBW, 256GB M.2 PCIe (NVMe) SSD, 160 TBW<br>GB equals one billion bytes when referring to storage capacity. Accessible capacity may be less.   |  |  |   |
| Operating Systems                     | No Operating System, Microsoft Windows 10 IoT Enterprise LTSC 64-bit  |  |  |   |
| I/O Ports                             | 1x RJ45 LAN (Gigabit) Port, 4x USB 3.0 Ports, 4x Micro USB 2.0 Ports for Elo Edge Connect peripherals, 1x 24V Powered USB Port, 2x 12V Powered USB Ports, 1x RJ50 Powered Serial Port, 1x 12V/24V Cash Drawer Port (EPSON Pinout, 24V default; selectable by BIOS setting), 1x Full-function USB-C Port (Power up to 27W, USB 3.0, Display Port, Additional Video Out), 1x Audio Port (3.5 mm headset jack) |  |  |   |
| Wireless Connectivity                 | 802.11 a/b/g/n/ac/ax 2.4GHz, 5GHz and 6GHz, Bluetooth 5.3   |  |  |   |
| TPM                                   | TPM 2.0   |  |  |   |
| RAID                                  | Intel Volume Management Device (VMD) technology for select SKUs   |  |  |   |
| AMT                                   | N/A   |  | Intel Active Management Technology (AMT)   |   |
| Audio                                 | 2x 2W internal speakers   |  |  |   |
| Power                                 | External 24VDC universal-type power supply brick, AC input voltage: 100-240 VAC, Input frequency: 50-60 Hz, Maximum output power: 180W  |  |  |   |
| Power Consumption                     | Without peripherals* - On Celeron: 39W, On i3: 51W, On i5: 57W, On i7: 56W, Sleep: < 5W, Off: < 0.5W<br>*Condition for i5 & i7 models with 16GB DIMM/256GB SSD, others with 8GB DIMM/128GB SSD  |  |  |   |
| Dimensions                            | Unpackaged: 20.70" x 14.52" x 8.06" / 525.8 mm x 368.7 mm x 204.6 mm, Packaged: 25.4" x 19.8" x 12.4" / 645 mm x 503 mm x 316 mm  |  |  |   |
| Weight                                | Unpacked: 22.3 lbs / 10.1 kg, Packaged: 26.46 lbs / 12 kg   |  |  |   |
| Temperature                           | Operating: 0°C to 35°C / 32°F to 95°F, Storage: -20°C to 60°C / -4°F to 140°F<br>Note: the thermal report pass airflow 0.5m/s condition. For No OS SKUs, recommend using the Elo optimize TDP tool for better performance.  |  |  |   |
| Humidity (non-condensing)             | Operating: 20% to 80%; Storage: 5% to 95% (38.7°C max wet bulb temperature)   |  |  |   |
| Energy Star Certified                 | Energy Star 8.0 certified configurations available  |  |  |   |
| Regulatory approvals and declarations | Canada cUL, IC; United States UL, FCC; Germany TUV; Europe CE; Australia RCM; United Kingdom UKCA; International CB; Argentina S-Mark; Brazil ANATEL; Japan VCCI, MIC; China CCC, SRRC; Mexico NOM; RoHS CoC; New Zealand R-NZ  |  |  |   |
| Mounting Options                      | 100mm VESA mount  |  |  |   |
| Real-Time Clock                       | Replaceable CR2450 lithium metal battery for clock  |  |  |   |
| Warranty                              | 3-year  |  |  |   |
| Extended Warranties                   | 4 year: E819598; 5 year: E819795; 3 year + AUR: E820186; 4 year + AUR: E820388; 5 year + AUR: E820582   |  |  |   |
| MTBF                                  | 50,000 hours demonstrated   |  |  |   |
| Other Features                        | Serviceable internal components, Models with a stand for desktop application, Kensington lock   |  |  |   |
| What's in the box                     | I-Series with stand, North America Power Cord, European Power Cord, Power Adapter - 180W, Cable RJ-50 to DB-9, Quick Installation Guide (QIG), Cable tie, CFD mounting screw, VESA mounting screw, VESA cover, VESA cover mounting screw  |  |  |   |

## Ordering Information

| Part Number | Processor | OS                  | Memory | Storage | Surface Treatment |
|-------------|-----------|---------------------|--------|---------|-------------------|
| E706811     | 7305L     | No OS               | 8GB    | 128GB   | Anti-glare        |
| E707003     | 7305L     | Window 10 2021 LTSC | 8GB    | 128GB   | Anti-glare        |
| E707193     | i3-1215UL | No OS               | 8GB    | 128GB   | Anti-glare        |
| E707378     | i3-1215UL | Window 10 2021 LTSC | 8GB    | 128GB   | Anti-glare        |
| E707579     | i5-1245UL | No OS               | 8GB    | 128GB   | Anti-glare        |
| E707769     | i5-1245UL | Window 10 2021 LTSC | 8GB    | 128GB   | Anti-glare        |
| E155493     | i7-1265UL | No OS               | 16GB   | 256GB   | Anti-glare        |
| E155309     | i7-1265UL | Window 10 2021 LTSC | 16GB   | 256GB   | Anti-glare        |
| E457084     | i5-1245UL | No OS               | 16GB   | 256GB   | Anti-glare        |
| E457278     | i5-1245UL | Window 10 2021 LTSC | 16GB   | 256GB   | Anti-glare        |
| E707974     | i7-1265UL | No OS               | 16GB   | 256GB   | Anti-glare        |
| E708162     | i7-1265UL | Window 10 2021 LTSC | 16GB   | 256GB   | Anti-glare        |

Elo reserves the right to change or update, without notice, any information contained herein; to change, without notice, the design, construction, materials, processing or specifications of any products; and to discontinue or limit production or distribution of any products. Elo and the Elo logo are either trademarks or registered trademarks of Elo Touch Solutions, Inc. All other trademarks are the property of their respective owners.  
© 2024 Elo Touch Solutions, Inc. All rights reserved. 24101AES00177



## 22-inch (16:9) I-Series 3 with Intel (Without Stand)

| Model                                 | i2 Models   | i3 Models  | i5 Models  | i7 Models   |
|---------------------------------------|---|--|--|---|
| Enclosure Color                       | Black   |  |  |   |
| Display                               | 21.5" / 546.1 mm diagonal, active matrix TFT LED LCD  |  |  |   |
| Aspect Ratio                          | 16:9 (standard)   |  |  |   |
| Active Display Area (W x H)           | 18.74" x 10.54" / 476.1 mm x 267.8 mm   |  |  |   |
| Native (optimal) Resolution           | 1920 x 1080 @ 60Hz  |  |  |   |
| Touch Technologies                    | 10-touch TouchPro® PCAP   |  |  |   |
| Colors                                | 16.7M   |  |  |   |
| Brightness (typical)                  | LCD panel: 250 nits, TouchPro PCAP: 212.5 nits  |  |  |   |
| Response Time Total (typical)         | 14 msec   |  |  |   |
| Viewing Angle (typical)               | Horizontal: 89°/89° or 178° total / Vertical: 89°/89° or 178° total   |  |  |   |
| Contrast Ratio (typical)              | 1000:1  |  |  |   |
| Processor                             | Intel Celeron Processor 7305L (8M Smart Cache, up to 1.10 GHz)  | Intel Core i3-1215UL Processor (10M Smart Cache, up to 4.40 GHz by Intel Turbo Boost Technology 2.0) | Intel Core i5-1245UL Processor (12M Smart Cache, up to 4.40 GHz by Intel Turbo Boost Technology 2.0) with Intel vPro™ Support        | Intel Core i7-1265UL Processor (12M Smart Cache, up to 4.80 GHz by Intel Turbo Boost Technology 2.0) with Intel vPro™ Support |
| Graphics                              | Intel UHD Graphics  |  | Intel Iris Xe Graphics eligible: to use the Intel Iris Xe Graphics, the system must be populated with 128-bit (dual channel) memory. |   |
| BIOS                                  | AMI   |  |  |   |
| Memory (RAM)                          | 8GB 4800MHz DDR5 SO-DIMM on 1 of 2 slots<br>(Expandable to 64GB maximum <sup>1</sup> on 2 slots) <sup>2</sup><br><sup>1</sup> Maximum memory using 2 slots. Expandable up to 64GB maximum, SO-DIMM DDR5-4800.<br><sup>2</sup> Check brand of the memory included in your unit before purchasing the memory kit. |  |  | 16GB 4800MHz DDR5 SO-DIMM on 1 of 2 slots   |
| Storage                               | 128GB M.2 PCIe (NVMe) SSD, 80 TBW, 256GB M.2 PCIe (NVMe) SSD, 160 TBW<br>GB equals one billion bytes when referring to storage capacity. Accessible capacity may be less.   |  |  |   |
| Operating Systems                     | No Operating System, Microsoft Windows 10 IoT Enterprise LTSC 64-bit, Windows 11 Professional 64-bit  |  |  |   |
| I/O Ports                             | 1x RJ45 LAN (Gigabit) Port, 4x USB 3.0 Ports, 4x Micro USB 2.0 Ports for Elo Edge Connect peripherals, 1x RJ50 Powered Serial Port, 1x Full-function USB-C Port (Power up to 27W, USB 3.0, Display Port, Additional Video Out), 1x Audio Port (3.5 mm headset jack)   |  |  |   |
| Wireless Connectivity                 | 802.11 a/b/g/n/ac/ax 2.4GHz, 5GHz and 6GHz, Bluetooth 5.3   |  |  |   |
| TPM                                   | TPM 2.0   |  |  |   |
| RAID                                  | Intel Volume Management Device (VMD) technology for select SKUs   |  |  |   |
| AMT                                   | N/A   |  | Intel Active Management Technology (AMT)   |   |
| Audio                                 | 2x 2W internal speakers   |  |  |   |
| Power                                 | External 24VDC universal-type power supply brick, AC input voltage: 100-240 VAC, Input frequency: 50-60 Hz, Maximum output power: 180W  |  |  |   |
| Power Consumption                     | Without peripherals* - On Celeron: 39W, On i3: 51W, On i5: 57W, On i7: 56W, Sleep: < 5W, Off: < 0.5W<br>*Condition for i5 & i7 models with 16GB DIMM/256GB SSD, others with 8GB DIMM/128GB SSD  |  |  |   |
| Dimensions                            | Unpackaged: 20.70" x 12.64" x 1.56" / 525.8 mm x 321.1 mm x 39.6 mm, Packaged: 25.3" x 8.4" x 17.3" / 643 mm x 214 mm x 439 mm  |  |  |   |
| Weight                                | Unpacked: 13.5 lbs / 6.1 kg, Packaged: 16.76 lbs / 7.6 kg   |  |  |   |
| Temperature                           | Operating: 0°C to 35°C / 32°F to 95°F, Storage: -20°C to 60°C / -4°F to 140°F<br>Note: the thermal report pass airflow 0.5m/s condition. For No OS SKUs, recommend using the Elo optimize TDP tool for better performance.  |  |  |   |
| Humidity (non-condensing)             | Operating: 20% to 80%; Storage: 5% to 95% (38.7°C max wet bulb temperature)   |  |  |   |
| Energy Star Certified                 | Energy Star 8.0 certified configurations available  |  |  |   |
| Regulatory approvals and declarations | Canada cUL, IC; United States UL, FCC; Germany TUV; Europe CE; Australia RCM; United Kingdom UKCA; International CB; Argentina S-Mark; Brazil ANATEL; Japan VCCI, MIC; China CCC, SRRC; Mexico NOM; RoHS CoC; New Zealand R-NZ  |  |  |   |
| Mounting Options                      | 100mm VESA mount  |  |  |   |
| Real-Time Clock                       | Replaceable CR2450 lithium metal battery for clock  |  |  |   |
| Warranty                              | 3-year  |  |  |   |
| Extended Warranties                   | 4 year: E819598; 5 year: E819795; 3 year + AUR: E820186; 4 year + AUR: E820388; 5 year + AUR: E820582   |  |  |   |
| MTBF                                  | 50,000 hours demonstrated   |  |  |   |
| Other Features                        | Serviceable internal components, Models with a stand for desktop application, Kensington lock   |  |  |   |
| What's in the box                     | I-Series, North America Power Cord, European Power Cord, Power Adapter - 180W, Cable RJ-50 to DB-9, Quick Installation Guide (QIG), Cable tie, VESA mounting screw  |  |  |   |

## Ordering Information

| Part Number | Processor | OS                  | Memory | Storage | Surface Treatment |
|-------------|-----------|---------------------|--------|---------|-------------------|
| E606708     | 7305L     | No OS               | 8GB    | 128GB   | Clear             |
| E606903     | 7305L     | Window 10 2021 LTSC | 8GB    | 128GB   | Clear             |
| E607093     | i3-1215UL | No OS               | 8GB    | 128GB   | Clear             |
| E607299     | i3-1215UL | Window 10 2021 LTSC | 8GB    | 128GB   | Clear             |
| E981022     | i3-1215UL | Window 10 2021 LTSC | 8GB    | 256GB   | Clear             |
| E607503     | i5-1245UL | No OS               | 8GB    | 128GB   | Clear             |
| E607709     | i5-1245UL | Window 10 2021 LTSC | 8GB    | 128GB   | Clear             |

## 24-inch (16:9) I-Series 3 with Intel (Without Stand)

| Model                                 | i2 Models   | i3 Models  | i5 Models  |
|---------------------------------------|---|--|--|
| Enclosure Color                       | Black   |  |  |
| Display                               | 23.8" / 604.52 mm diagonal, active matrix TFT LED LCD   |  |  |
| Aspect Ratio                          | 16:9 (standard)   |  |  |
| Active Display Area (W x H)           | 20.75" x 11.67" / 527.04 mm x 296.46 mm   |  |  |
| Native (optimal) Resolution           | 1920 x 1080 @ 60Hz  |  |  |
| Touch Technologies                    | 10-touch TouchPro® PCAP   |  |  |
| Colors                                | 16.7M   |  |  |
| Brightness (typical)                  | LCD panel: 250 nits, TouchPro PCAP: 212.5 nits  |  |  |
| Response Time Total (typical)         | 16 msec   |  |  |
| Viewing Angle (typical)               | Horizontal: 89°/89° or 178° total / Vertical: 89°/89° or 178° total   |  |  |
| Contrast Ratio (typical)              | 1000:1  |  |  |
| Processor                             | Intel Celeron Processor 7305L (8M Smart Cache, up to 1.10 GHz)  | Intel Core i3-1215UL Processor (10M Smart Cache, up to 4.40 GHz by Intel Turbo Boost Technology 2.0) | Intel Core i5-1245UL Processor (12M Smart Cache, up to 4.40 GHz by Intel Turbo Boost Technology 2.0) with Intel vPro™ Support        |
| Graphics                              | Intel UHD Graphics  |  | Intel Iris Xe Graphics eligible: to use the Intel Iris Xe Graphics, the system must be populated with 128-bit (dual channel) memory. |
| BIOS                                  | AMI   |  |  |
| Memory (RAM)                          | 8GB 4800MHz DDR5 SO-DIMM on 1 of 2 slots (Expandable to 64GB maximum <sup>1</sup> on 2 slots) <sup>2</sup>  |  |  |
|                                       | <sup>1</sup> Maximum memory using 2 slots. Expandable up to 64GB maximum, SO-DIMM DDR5-4800.<br><sup>2</sup> Check brand of the memory included in your unit before purchasing the memory kit.  |  |  |
| Storage                               | 128GB M.2 PCIe (NVMe) SSD, 80 TBW, 256GB M.2 PCIe (NVMe) SSD, 160 TBW<br>GB equals one billion bytes when referring to storage capacity. Accessible capacity may be less.   |  |  |
| Operating Systems                     | No Operating System, Microsoft Windows 10 IoT Enterprise LTSC 64-bit, Windows 11 Professional 64-bit  |  |  |
| I/O Ports                             | 1x RJ45 LAN (Gigabit) Port, 4x USB 3.0 Ports, 4x Micro USB 2.0 Ports for Elo Edge Connect peripherals, 1x RJ50 Powered Serial Port, 1x Full-function USB-C Port (Power up to 27W, USB 3.0, Display Port, Additional Video Out), 1x Audio Port (3.5 mm headset jack) |  |  |
| Wireless Connectivity                 | 802.11 a/b/g/n/ac/ax 2.4GHz, 5GHz and 6GHz, Bluetooth 5.3   |  |  |
| TPM                                   | TPM 2.0   |  |  |
| RAID                                  | Intel Volume Management Device (VMD) technology for select SKUs   |  |  |
| AMT                                   | N/A   |  | Intel Active Management Technology (AMT)   |
| Audio                                 | 2x 2W internal speakers   |  |  |
| Power                                 | External 24VDC universal-type power supply brick, AC input voltage: 100-240 VAC, Input frequency: 50-60 Hz, Maximum output power: 180W  |  |  |
| Power Consumption                     | Without peripherals* - On Celeron: 40W, On i3: 52W, On i5: 56W, Sleep: < 5W, Off: < 0.5W<br>*Condition for i7 models with 16GB DIMM/256GB SSD, others with 8GB DIMM/128GB SSD   |  |  |
| Dimensions                            | Unpackaged: 22.49" x 13.86" x 1.54" / 571.2 mm x 352.0 mm x 39.0 mm, Packaged: 27.4" x 20.8" x 7.4" / 697 mm x 529 mm x 188 mm  |  |  |
| Weight                                | Unpacked: 14.8 lbs / 6.7 kg, Packaged: 21.16 lbs / 9.6 kg   |  |  |
| Temperature                           | Operating: 0°C to 35°C / 32°F to 95°F, Storage: -20°C to 60°C / -4°F to 140°F<br>Note: the thermal report pass airflow 0.5m/s condition. For No OS SKUs, recommend using the Elo optimize TDP tool for better performance.  |  |  |
| Humidity (non-condensing)             | Operating: 20% to 80%; Storage: 5% to 95% (38.7°C max wet bulb temperature)   |  |  |
| Energy Star Certified                 | Energy Star 8.0 certified configurations available  |  |  |
| Regulatory approvals and declarations | Canada cUL, IC; United States UL, FCC; Germany TUV; Europe CE; Australia RCM; United Kingdom UKCA; International CB; Argentina S-Mark; Brazil ANATEL; Japan VCCI, MIC; China CCC, SRRC; Mexico NOM; RoHS CoC; New Zealand R-NZ                                      |  |  |
| Mounting Options                      | 100mm VESA mount  |  |  |
| Real-Time Clock                       | Replaceable CR2450 lithium metal battery for clock  |  |  |
| Warranty                              | 3-year  |  |  |
| Extended Warranties                   | 4 year: E819598; 5 year: E819795; 3 year + AUR: E820186; 4 year + AUR: E820388; 5 year + AUR: E820582   |  |  |
| MTBF                                  | 50,000 hours demonstrated   |  |  |
| Other Features                        | Serviceable internal components, Models with a stand for desktop application, Kensington lock   |  |  |
| What's in the box                     | I-Series, North America Power Cord, European Power Cord, Power Adapter - 180W, Cable RJ-50 to DB-9, Quick Installation Guide (QIG), Cable tie, VESA mounting screw  |  |  |

## Ordering Information

| Part Number | Processor | OS                  | Memory | Storage | Surface Treatment |
|-------------|-----------|---------------------|--------|---------|-------------------|
| E607901     | 7305L     | No OS               | 8GB    | 128GB   | Clear             |
| E608084     | 7305L     | Window 10 2021 LTSC | 8GB    | 128GB   | Clear             |
| E608275     | i3-1215UL | No OS               | 8GB    | 128GB   | Clear             |
| E608462     | i3-1215UL | Window 10 2021 LTSC | 8GB    | 128GB   | Clear             |
| E608662     | i5-1245UL | No OS               | 8GB    | 128GB   | Clear             |
| E608847     | i5-1245UL | Window 10 2021 LTSC | 8GB    | 128GB   | Clear             |

Learn more about Elo at [EloTouch.com](https://www.elotouch.com).

### Americas

Tel +1 408 597 8000  
elosales.na@elotouch.com

### Europe (EMEA)

Tel +32 (0)16 70 45 00  
EMEA.Sales@elotouch.com

### Asia Pacific

Tel +86 (21) 3329 1385  
www.elotouch.com.cn

Elo reserves the right to change or update, without notice, any information contained herein; to change, without notice, the design, construction, materials, processing or specifications of any products; and to discontinue or limit production or distribution of any products. Elo and the Elo logo are either trademarks or registered trademarks of Elo Touch Solutions, Inc. All other trademarks are the property of their respective owners.  
© 2024 Elo Touch Solutions, Inc. All rights reserved. 24101AES00177

