



Maintenance and Service Guide

322pf model

SUMMARY

This guide provides information about spare parts, removal and replacement of parts, diagnostic tests, problem troubleshooting, and more.

© Copyright 2024 HP Development Company, L.P.

AMD is a trademark of Advanced Micro Devices, Inc. Bluetooth is a trademark owned by its proprietor and used by HP Inc. under license. NVIDIA is a trademark and/or registered trademark of NVIDIA Corporation in the U.S. and other countries. USB Type-C and USB-C are registered trademarks of USB Implementers Forum. DisplayPort and the DisplayPort logo are trademarks owned by the Video Electronics Standards Association (VESA) in the United States and other countries.

The information contained herein is subject to change without notice. The only warranties for HP products and services are set forth in the express warranty statements accompanying such products and services. Nothing herein should be construed as constituting an additional warranty. HP shall not be liable for technical or editorial errors or omissions contained herein.

First Edition: June 2024

Document Part Number: N95371-322pf-MSG-V1

Assembly part number: N95371-001

Product notice

Only trained service personnel familiar with this product should service it. Before performing any maintenance or service, be sure to read "Important Safety Information".

Table of Contents

1	Getting started.....	2
	Important safety information.....	2
	Important service information and precautions	2
	RoHS (2002/95/EC) requirements	3
	General descriptions	3
	Firmware updates	3
	Before returning the repaired product to the customer	3
2	Monitor features.....	4
	Features	4
	Front components	5
	Rear components	5
	Locating the serial number and product number	7
3	Illustrated parts catalog	8
	How to order parts	9
4	Removal and replacement procedures	11
	Preparation for disassembly	11
	Rear Cover	11
	Power board.....	14
	Connector repair.....	15
	DP connector CN501.....	16
	HDMI connector CN502	17
	D-SUB connector CN503.....	18
	Function test	19
	Support and troubleshooting	19
	Index.....	21

1 Getting started

Read this chapter to learn about safety information and where to find additional HP resources.

Important safety information

Carefully read the cautions and notes within this document to minimize the risk of personal injury to service personnel. The cautions and notes are not exhaustive. Proper service methods are important to the safe, reliable operation of equipment. Improper service methods can damage equipment.

The service procedures recommended and described in this service manual provide effective methods of performing service operations. Service engineers should have prior repair knowledge and experience as well as appropriate training for the product before performing service procedures.

- Be sure your working environment is dry and clean and meets all government safety requirements.
- Be sure that other persons are safe while you are servicing the product.
- Do not perform any action that can cause a hazard to the customer or make the product unsafe.
- Use proper safety devices to ensure your personal safety.
- Always use approved tools and test equipment for servicing.
- Never assume the product's power is disconnected from the main power supply. Check that it is disconnected before opening the product's cabinet.
- Modules containing electrical components are sensitive to electrostatic discharge (ESD). Follow ESD safety procedures while handling these parts.
- Some products contain more than one battery. Do not disassemble or expose a battery to high temperatures, such as throwing into fire, or the battery may explode.
- Refer to government requirements for battery recycling or disposal.

This information provides general service information for the monitor. Adherence to the procedures and precautions is essential for proper service.

IMPORTANT: Only trained service personnel who are familiar with this HP product should perform service or maintenance for it. Before performing any service or maintenance, personnel must read the important safety information.

IMPORTANT: You must disconnect the power cord from the power source before opening the monitor to prevent component damage.

Important service information and precautions

- Repair must be performed by professional service technicians in a repair center. End users should not perform these procedures.
- Please note during servicing that the primary side is the high voltage area.
- This monitor meets ROHS requirements. Be sure to use lead-free solder wire when soldering.
- If you must change a capacitor, be sure to match the polarity as printed on the PCB.
- If you must replace a capacitor, make sure the specification and part number match the BOM and location.
- If you must replace a capacitor, insert new parts carefully to avoid a short circuit caused by the near pin.
- Do not get the board wet. Water and moisture can cause a short circuit that causes malfunctions.

- To avoid damage, be sure to use lead-free solder.
- When soldering, work quickly to avoid overheating the circuit board.
- Keep the soldering iron tip clean and well tinned when replacing parts.
- After repair, perform a close inspection of the circuit board to confirm it is in good condition.
- After repair, perform a function test to confirm the power supply is working properly.

ERP Lot5 requirement

1. A professional repairer must have the technical competence to repair electronic displays and comply with the applicable regulations for repairers of electrical equipment in the Member States where the repairer operates. Reference to an official registration system as professional repairer, where such a system exists in the Member States, shall be accepted as proof of compliance.

2. A professional repairer must have insurance that covers liabilities resulting from repairs, regardless of whether required by the Member State.

RoHS (2002/95/EC) requirements

Applied to all countries that require RoHS.

The RoHS (Restriction of Hazardous Substance in Electrical and Electronic Equipment Directive) is a legal requirement by the EU (European Union) for the global electronics industry sold in the EU and other countries. Any electrical and electronics products launched in the market after June 2006 should meet this RoHS requirement. Products launched in the market before June 2006 are not required to be compliant with RoHS parts. If the original parts are not RoHS complaint, the replacement parts can be non-ROHS complaint. If the original parts are RoHS compliant, the replacement parts **MUST** be RoHS complaint.

If product service or maintenance requires replacing parts, confirm the RoHS requirement before replacement.

General descriptions

This manual contains general information. There are two levels of service:

Level 1: Cosmetic/appearance/alignment service

Level 2: Circuit board or standard parts replacement

Firmware updates

Firmware updates for the monitor are available at support.hp.com. If no firmware is posted, the monitor does not need a firmware update.

Before returning the repaired product to the customer

Perform an AC leakage current check on exposed metallic parts to be sure the product is safe to operate without the potential of electrical shock. Do not use a line isolation transformer during this check.

Measurements that are not within specified limits present a possible shock hazard. You must check and repair the product before returning it to the customer.

2 Monitor features

This chapter provides an overview of the monitor's features.

Features

Depending on the model, your monitor might include the following features:

Display features

- 54.6 cm (21.5 in), plus full-screen support for lower resolutions; includes custom scaling for maximum image size while preserving original aspect ratio
- Liquid crystal display (LCD) with active matrix and in-plane switching (IPS) (select products only)
- NTSC color gamut
- Nonglare panel with an LED backlight
- Tilt capabilities
- On-screen display (OSD) adjustments in several languages for easy setup and screen optimization
- Energy saver feature to meet requirements for reduced power consumption
- Security cable slot on the rear of the monitor for an optional security cable
- Cable management feature for placement of cables and cords
- HP Eye Ease (TUV low blue light hardware solution, certified and up to 100Hz max refresh rate)
- Compatible with display software, including:
 - HP Display Center
 - HP Display Manager

Connector

- VGA port
- DisplayPort™ video input(select products only)
- High-Definition Multimedia Interface™ (HDMI) video input
- Plug and Play capability, if supported by your operating system

Monitor stand

- Removable stand for flexible monitor head mounting solutions
- VESA® mounting capability (100 × 100 mm) for attaching the monitor to a swing arm mount
- Support for a mounting bracket to attach the monitor to a workstation

NOTE: For safety and regulatory information, refer to the Product Notices provided in your documentation kit. To access the latest user guides or manuals for your product, go to <http://www.hp.com/support> and follow the instructions to find your product. Then select **Manuals**.

Front components

To identify the components on the front of the monitor, use this illustration and table.

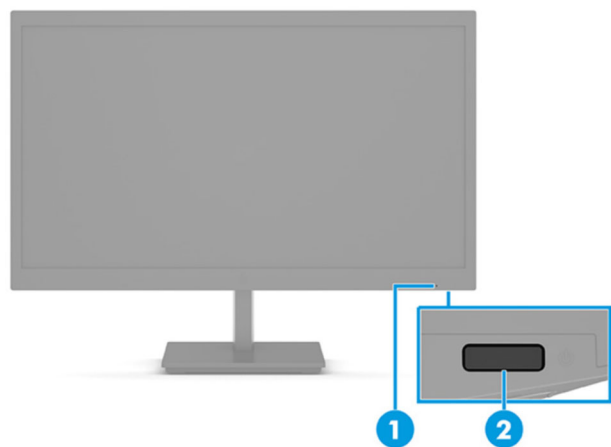


Table 1-1: Front components and their descriptions

Component		Function
1	Power LED	Indicates that the monitor is powered on.
2	Power button	Turns the monitor on or off.

Rear components

To identify the components on the rear of the monitor, use this illustration and table.

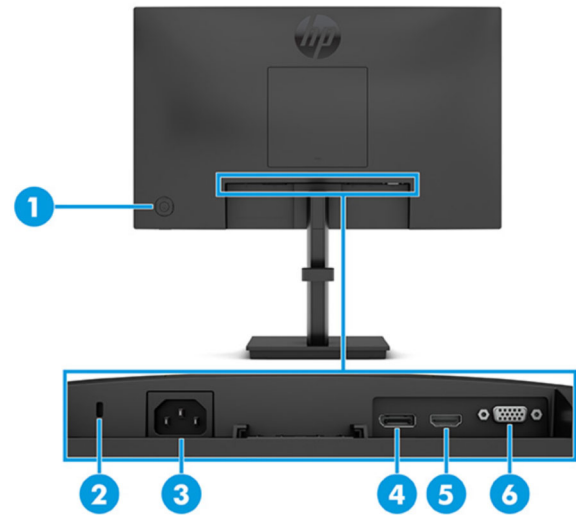


Table 1-2: Rear components and their descriptions

Component		Function
1	Joypad OSD button	Opens the OSD settings.
2	Security cable slot	Connects an optional security cable.

3	Power connector	Connects a power cord.
4	DisplayPort connector	Connects a DisplayPort cable to a source device such as a computer or game console.
5	HDMI port	Connects the HDMI cable to a source device such as a computer or game console.
6	VGA port	Connects a VGA cable to a source device such as a computer or game console.

Locating the serial number and product number

The Barcode label **(1)** and SPEC label **(2)** are located on the rear of the monitor. The serial number and product number are located on a Safety label. You may need these numbers when contacting HP about the monitor model.



For worldwide models (including India)

Barcode label

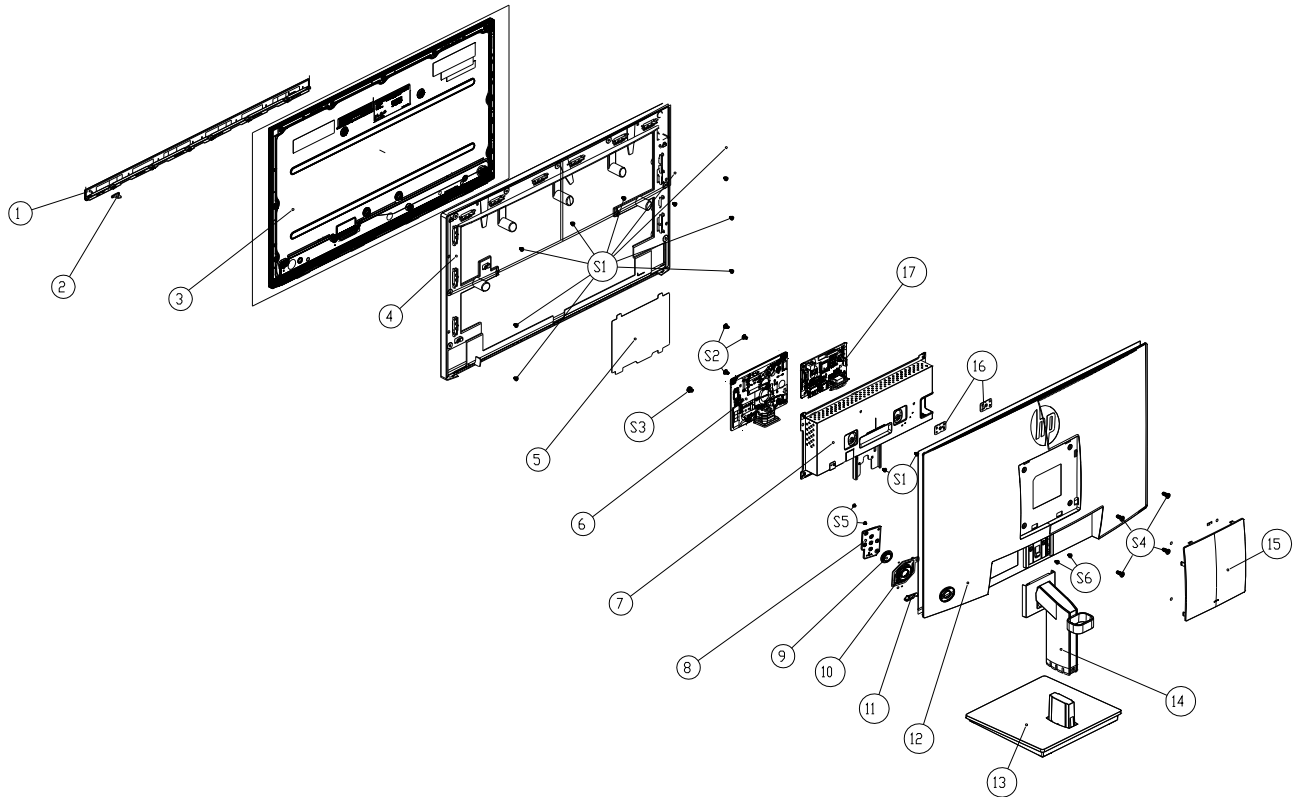


Spec label



3 Illustrated parts catalog

To identify the monitor major components, use this illustration and table.



Item	Description	Qty
1	DECO_BEZEL	1
2	LENS	1
3	PANEL	1
4	MIDDLE_FRAME	1
5	POWER MYLAR	1
6	POWER BOARD	1
7	MAIN FRAME	1
8	KEY BOARD	1
9	KEY	1
10	KEY_FUNCTION	1
11	KEY_POWER	1
12	REAR_COVER	1
13	BASE_ASS'Y L215W-Fhp1b-s1 N/A	1

14	stand ass"y L215W-Fhp1b-s1 NA	1
15	COVER_VESA L215W-Fhp1b-s1	1
16	BKT_VESA	1
17	MAIN BOARD	1
S1	0M1G3030 4120	11
S2	0M1G1030 6120	3
S3	QM1G38400601200ARA	1
S4	0M1G2940 10 47 CR3	4
S5	QQ1G24200301200AWL	2
S6	0M1G3030 4 47 CR3	2

How to order parts

The HP authorized repair center can purchase the power board from HP.

Power board

Description	HP spare part number	Manufacturer part number
PSU 322pf 1 st source	P15938-001	PLPCNB391GQA3(LG)
PSU 322pf 2 nd source	P15938-002	PLPCNB441AQA1(AUO)
PSU 322pf 3 rd source	P15938-003	PLPCNB511QA2(INX)

Capacitors and connectors are available for purchase from the following EU distributors:

- RS Component: [Capacitors | RS Components \(rs-online.com\)](https://www.rs-online.com)
- Tme Component: [Transfer Multisort Elektronik](https://www.tme.eu)
- Element14 Component: <https://cn.element14.com/>

Capacitors by distributor

Component description	Location	Component distributor	Distributor part number
EC 470uF 20% 25V 10x12 5000 hr 1.7A ERF1	C916/C917	Element14	ESY477M025AH2AA

Connectors by manufacturer

Component description	Location identifier	Component distributor	Distributor part number
DisplayPort	CN501	RS	47272-0001 (Molex)
HDMI	CN502	RS	685119134923 (Würth Elektronik)
D-SUB	CN503	tme	HDL15-SL-B (ADAM TECH)

NOTE: Rear cover and chassis need to be modified to hold connector. Connector may need modifications to meet functional, safety and regulatory requirements accordingly if it doesn't match exactly.

You can purchase cables from the HP part store at <https://partsurfer.hp.com/Search.aspx>.

Internal and External Power Supplies are available for purchase from the following EU distributor: EET <https://www.eetgroup.com/en-eu/>

NOTE: HP continually improves and changes product parts. For complete and current information about supported parts for your product, go to <https://partsurfer.hp.com/Search.aspx>, select your country or region, and then follow the on-screen instructions.

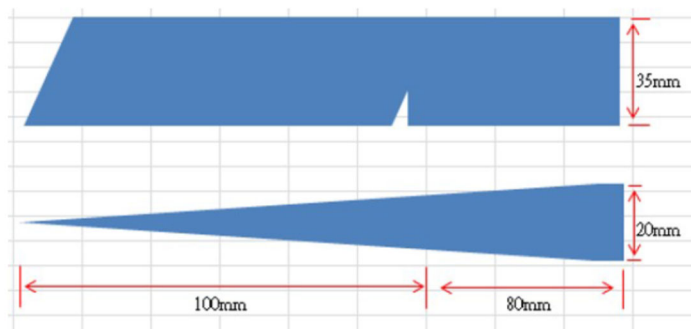
4 Removal and replacement procedures

Adherence to these procedures and precautions is essential for proper service.

Preparation for disassembly

Use this information to properly prepare to disassemble and reassemble the monitor.

- 1) Read the “Important safety information” and “Important service information and precautions” sections in the “Getting started” chapter of this guide.
- 2) Clean the room for disassembly.
- 3) Identify the disassembly area.
- 4) Check the position that the monitors are to be placed along with the number of monitors. Prepare the area for material flow according to the disassembly layout.
- 5) Be sure to have the following equipment and materials:
 - Press fixture
 - Working table
 - Screwdriver
 - Knife
 - Gloves
 - Cleaning cloth
 - ESD protection
 - Scraper bar in the following dimensions:



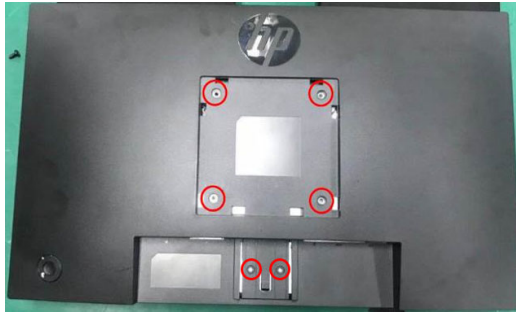
Rear Cover

Before removing the Rear Cover, follow these steps:

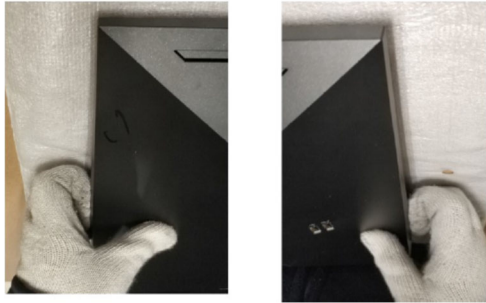
- ▲ Prepare the monitor for disassembly. See Preparation for disassembly on page 11.

Remove the Rear Cover:

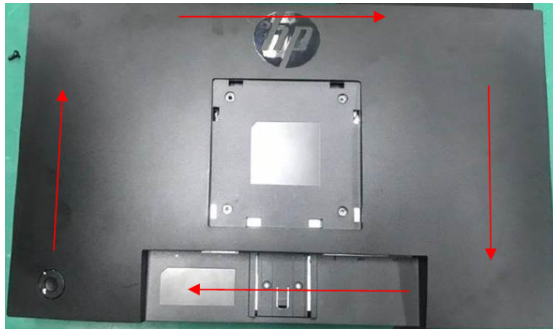
- 1) Remove six screw from the rear case.



- 2) Use your fingers to split the left and right sides apart between the middle frame and rear case.



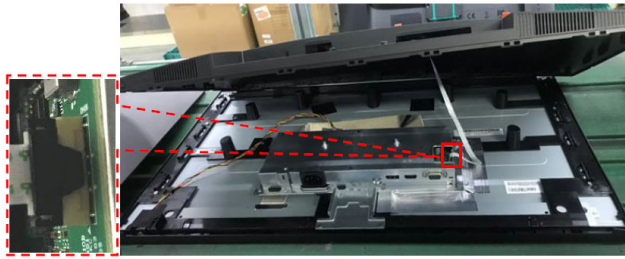
- 3) Insert the scraper bar tool into the gap between the middle frame and rear case, and then rotate. The hook opens. Repeat the steps.



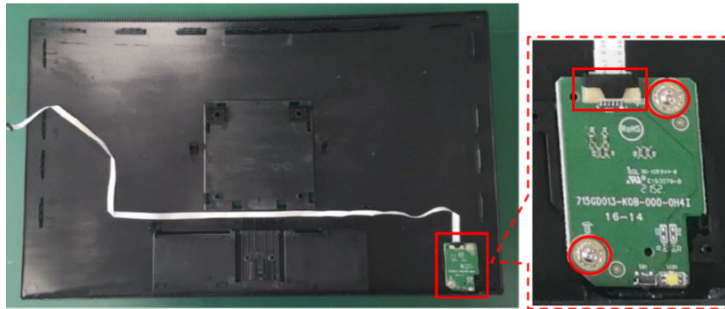
- 4) Disassemble Rear Cover.



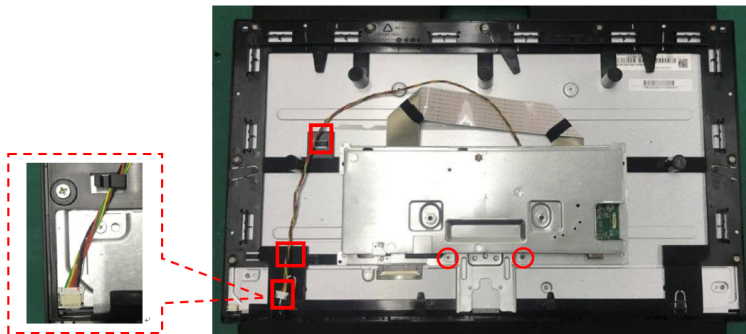
- 5) Remove the key board wire from the Interface-board.



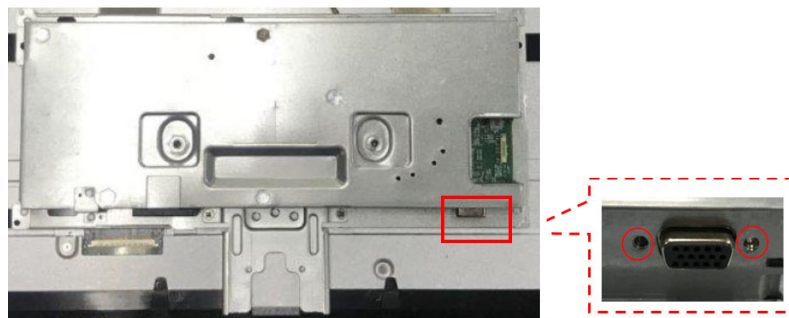
- 6) Disassemble the key board from the Rear Cover (if required).



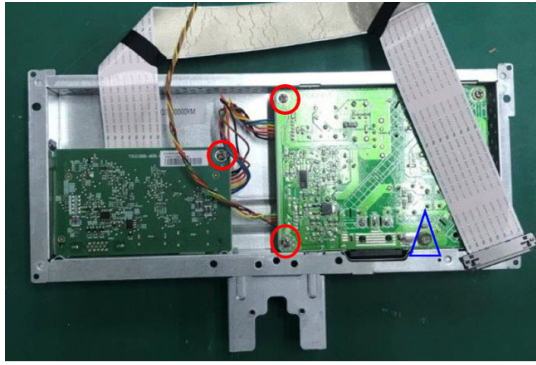
- 7) Remove 2 screws and disconnect the cable to disassemble the main frame from panel



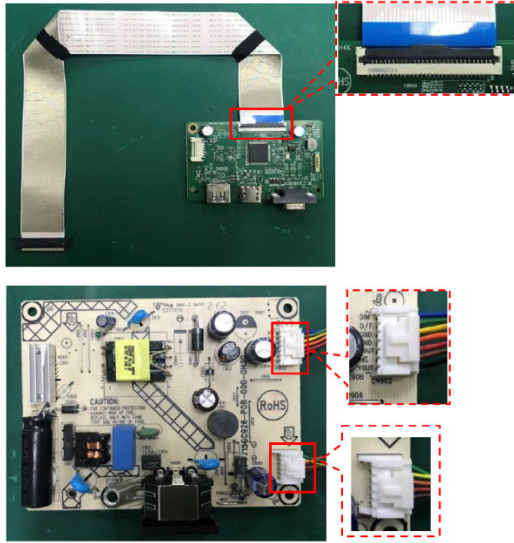
- 8) Remove 2 screws from the bracket.



- 9) Disassemble 4 screws from the board.



- 10) Disassemble all the boards from housing.
- 11) Disconnect all the wires from the board.



Power board

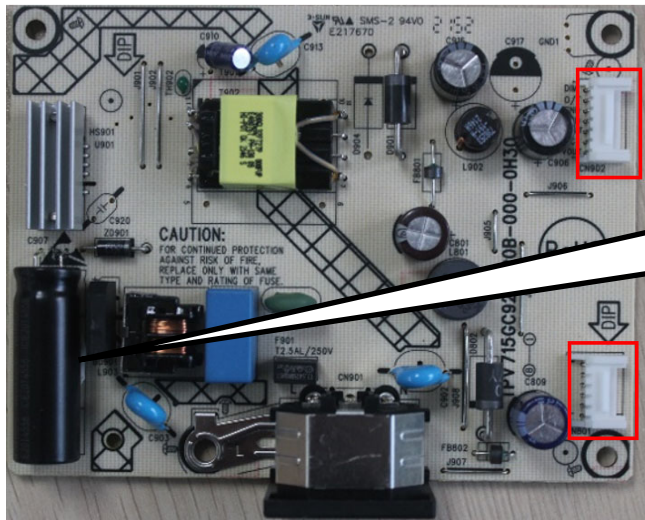
The power board part number is PLPCNB391GQA3 (1st source)

Before removing the power board, follow these steps:

- ▲ Prepare the monitor for disassembly. See Preparation for disassembly on page 11.

Remove the power board:

- 1) The HP 322pf power board connector position is as follows:

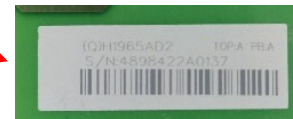
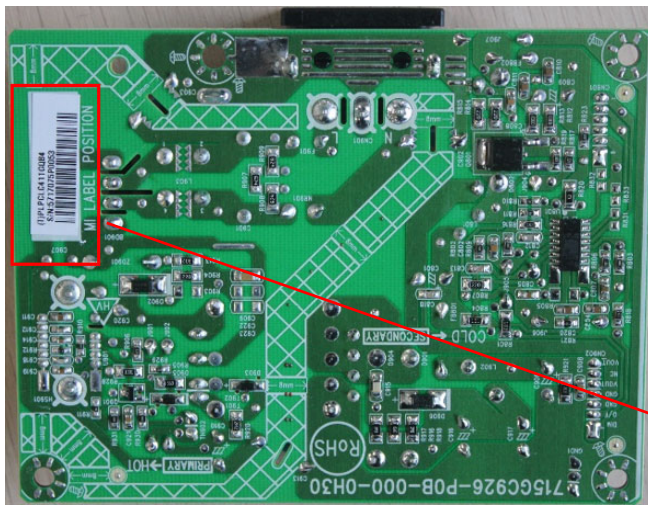


CN902

Warning: After unplugging the power supply, the capacitance is still charged, do not touch and discharge the capacitor.

CN801

2) Locate the part number location on the board



Connector repair

This procedure includes DisplayPort, HDMI and D-SUB connectors.

The connectors are on the main board (board part number CBPR3EBHPQ1)

The connectors' identifiers are as follows:

Connector	Location
DisplayPort	CN501
HDMI	CN502
D-SUB	CN503



Before repairing connectors, follow these steps:

- ▲ Prepare the monitor for disassembly. See [Preparation for disassembly](#) on page 11.

IMPORTANT:

- **Repair Condition: Connector repair is only for out of warranty.**
- **Repairing must operate by professional repairers (Note) in repair center, not applicable for end user.**
- **Electrostatic protection is required when component replacement is required.**
- **The monitor meets ROHS, please use Lead-free solder wire for soldering.**
- **If Connector need to replace, must check specification and part number whether match the BOM and location.**
- **If connector need to replace, please insert new parts carefully because the near pin may cause short circuit by inappropriate operate.**
- **DO NOT allow any liquid on the board. Water and moisture may cause short-circuit to the electronic components and lead to malfunctions.**
- **The fusion point of Lead-Free solder is requested. Repairing with conventional lead wire may cause damage.**
- **Work quickly to avoid overheating the circuit board as soon as you confirm the steady soldering condition.**
- **Keep the soldering iron tip clean and well tinned and when replacing parts.**
- **A close inspection of the circuit board revealed look in good condition.**
- **After repaired, must connect source to each port to check Main board function is ordinary.**

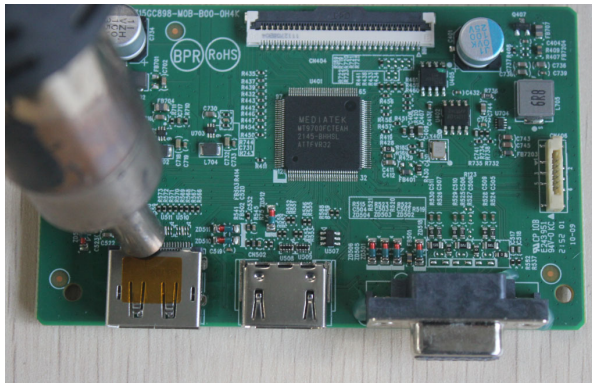
Note: (The requirement of professional repairers' regulation by ERP lot5)

- 1) The professional repairer has the technical competence to repair electronic displays and complies with the applicable regulations for repairers of electrical equipment in the Member States where it operates. Reference to an official registration system as professional repairer, where such system exists in the Member States concerned, shall be accepted as proof of compliance with this point.
- 2) The professional repairer is covered by insurance covering liabilities resulting from its activity, regardless of whether this is required by the Member State.

DP connector CN501

Repair the DP connector:

- 1) Use a soldering iron and a de-soldering pump to remove as much solder as possible from the pin.



- 2) Use a hot air gun to melt the solder on the pins.

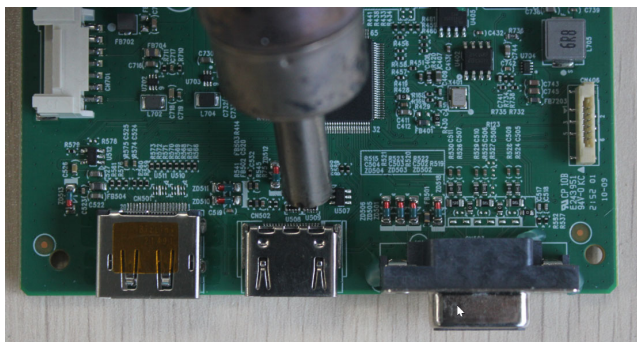


- 3) Lift the CN501 connector from the PCB
- 4) Place the new component on the circuit board. Be sure that it matches the footprint.
- 5) Solder the new component.

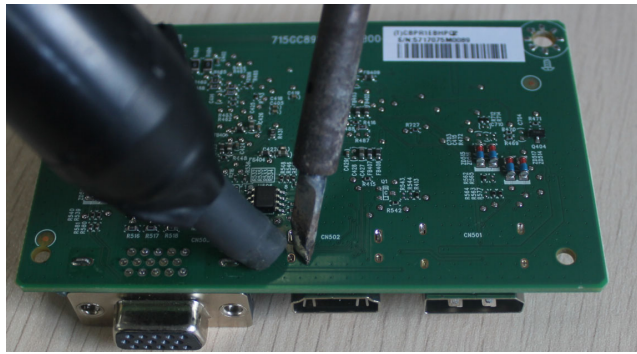
HDMI connector CN502

Repair the HDMI connector:

- 1) Use a soldering iron and a de-soldering pump to remove as much solder as possible from the pin.



- 2) Use a hot air gun to melt the solder on the pins.



- 3) Lift the CN502 connector from the circuit board.
- 4) Place the new component on the circuit board. Be sure that it matches the footprint.
- 5) Solder the new component.

D-SUB connector CN503

Repair the D-SUB connector:

- 1) Use a soldering iron and a de-soldering pump to remove as much solder as possible from the pin.



- 2) Lift the CN503 connector from the circuit board.
- 3) Place the new component on the circuit board. Be sure that it matches the footprint.
- 4) Solder the new component.

Function test

After repair, be sure to confirm that all functions are working.

Table 4-1: Function test

Test item	Operating description	Tool used
HDMI test	Confirm whether image displays and sound plays correctly on the monitor.	Computer or DVD player
DP test	Confirm whether image displays and sound plays correctly on the monitor.	Computer or DVD player
D-SUB test	Confirm whether image displays and sound plays correctly on the monitor	Computer or D-SUB player

Support and troubleshooting

The following table lists possible problems, the possible cause or each problem, and the recommended solutions.

Table 4-2: Solving common problems

Problem	Possible cause	Solution
Screen is blank or video is flashing.	Power cord is disconnected.	Connect the power cord.
	Monitor is off.	Power the power button. NOTE: If pressing the Power button has no effect, press and hold the power button for 10 seconds to disable the Power Button Lockout feature.
	Video cable is improperly connected.	Connect the video cable properly.
	System is in Auto-Sleep Mode.	Press any key on the keyboard or move the mouse to inactivate the screen blanking utility.
	Video card is incompatible.	Perform one of the following actions: <ul style="list-style-type: none">• Open the OSD menu and select the Input menu. Set Auto-Switch Input to Off and manually select the input.• Replace the video card or connect the video cable to one of the computer's on-board sources.
Image appears blurred, indistinct, or too dark.	Brightness is too low.	Open the OSD menu and select Brightness to adjust the

		brightness scale as needed.
Check Video Cable is displayed on screen.	Monitor video cable is disconnected.	Connect the appropriate video signal cable between the computer and monitor. Be sure that the computer power is off while connecting the video cable.
“Input Signal Out of Range” is displayed on screen.	Video resolution, refresh rate, or both, are set higher than the monitor supports.	Change the settings to a supported setting.
The monitor does not enter into a low-power sleep state.	The monitor's power saving control is disabled.	Open the OSD menu and select Power, select Auto-Sleep Mode, and then set auto-sleep to On.
“OSD Lockout” is displayed	The monitor’s OSD lockout function is enabled.	Press and hold the Left button for 10 seconds to disable the OSD Lockout function.
“Power Button Lockout” is displayed.	The monitor's Power Button Lockout feature is enabled.	Press and hold the Power button for 10 seconds to unlock the power button function.
Monitor has trouble waking from Sleep mode		DisplayPort or USB Type-C inputs: Set the DisplayPort hot-plug detection to Always Active. Power mode monitors: Set the hot-plug detection to Always Active to switch the monitor to Performance mode.
Slow performance from USB		The monitor has a two-lane default form USB-C. On selected products, you can press the Joypad button to open the OSD menu, navigate to the USB type-C configuration, and then select USB-C Video +USB 3.0 for data transfer prioritization
Lower refresh rate or color bits		Select USB-C Video +USB 2.0 for refresh rate/color bits prioritization
LAN connection drop		Check if the LAN driver version on the host PC is up to date.

Index

components

- front, 5

- rear, 5

- connector repair, 15

- features, 4

- firmware updates, 3

- front components, 5

- function test, 19

- how to order parts, 9

- illustrated parts catalog, 8

- menu button location, 5

- parts, 8

- parts, ordering, 9

- power board removal, 14

- precautions, 2

- preparation for disassembly, 11

- RC removal, 11

- rear components, 5

- removal

 - power board, 14

 - RC, 11

- removal and replacement procedures, 11

- returning to customer, 3

- RoHS (2002/95/EC) requirements, 3

- safety information, 2

- serial number location, 7

- service information, 2

- spare parts, 8

- support and troubleshooting, 19

- troubleshooting, 19