



## TC-KP12V (V1.xR) SETUP INFO

UPC #	710931401745
Master Carton UPC #	10710931401742
Product Page	<a href="https://www.trendnet.com/products/wall-mount-patch-panel/12-port-blank-angled-wall-mount-keystone-patch-panel-TC-KP12V-v1">https://www.trendnet.com/products/wall-mount-patch-panel/12-port-blank-angled-wall-mount-keystone-patch-panel-TC-KP12V-v1</a>
Additional Images	<a href="https://www.trendnet.com/support/support-detail?prod=150_TC-KP12V">https://www.trendnet.com/support/support-detail?prod=150_TC-KP12V</a>
Key Search Words	Cat5, Cat5e, Cat6, Cat6A, fiber, lc, hdmi, usb, 3.5mm, audio, horizontal mount, vertical mount, Shielded patch panel, 12-port, wall mount, TC-K05LC, TC-K06C6A, TC-KC06C6A, TC-K25C6BK, TC-K50C6BK, TC-K25C6, TC-K50C6, gigabit, 10G, keystone jack, STP, Angled design, adjustable angled, swivel, 89D, patch panel, modular
Package Dimensions	27.0 x 8.6 x 8.0 cm (11 x 4 x 4 in.)
Package Weight	0.53kg (1.32 lbs.)
Unit Qty per Case	20
Case Dimension	56 x 46 x 19 cm (23 x 18 x 8 in.)
Case Weight	9.65kg (24 lbs.)
Country of Origin	Taiwan
Product Availability Date	April 2024
Warranty	2 year
MSRP	\$19.99

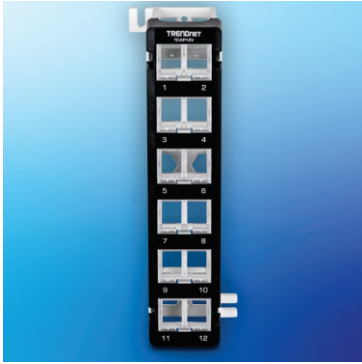


## 12-Port Blank Angled Wall Mount Keystone Patch Panel

TC-KP12V (v1.xR)

- 12-Port blank angled keystone patch panel
- Adjustable angled keystone design for easy cable management
- Wall mount
- Included 89D wall mount bracket for vertical or horizontal installations
- Compact design for residential or small business use
- Use with TRENDnet keystone jacks TC-K05LC, TC-K06C6A, TC-KC06C6A, TC-K25C6BK, TC-K50C6BK, TC-K25C6, TC-K50C6 (sold separately)

TRENDnet's 12-Port Blank Angled Wall Mount Keystone Patch Panel, model TC-KP12V, is a reliable modular patch panel designed for use with TRENDnet's keystone jacks. When used together, they create a wall mount patch panel solution suitable for different network applications. The snap-in style wall mount bracket design provides quick and easy access to cable connections when needed for installation or troubleshooting. This compact/mini wall mount patch panel also includes a wall mount bracket for vertical or horizontal installations.



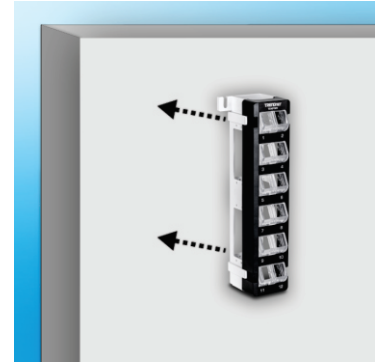
### 12-Port

The 12-Port patch panel is designed for use with TRENDnet's keystone jacks (sold separately).



### Adjustable Angle

The blank keystone patch panel features an adjustable angled keystone design for easy cable management.



### Wall Mount

This compact wall mount patch panel includes a wall mount bracket for vertical or horizontal installations.

## NETWORKING SOLUTION

Included 89D wall mount bracket for vertical or horizontal installations

Adjustable angled keystone design for easy cable management

12-Port blank angled keystone patch panel

Use with TRENDnet keystone jacks TC-K05LC, TC-K06C6A, TC-KC06C6A, TC-K25C6BK, TC-K50C6BK, TC-K25C6, TC-K50C6 (sold separately)

## SPECIFICATIONS

### Features

- 12-Port blank keystone patch panel
- Adjustable angle for easy cable management
- Use with TRENDnet keystone jacks TC-K05LC, TC-K06C6A, TC-KC06C6A, TC-K25C6BK, TC-K50C6BK, TC-K25C6, TC-K50C6 (sold separately)

### Materials

- Plastic
- Black coating

### Dimensions

- 255 x 55 x 65mm (10 x 2.2 x 2.6 in.)

### Weight

- 168g (6 oz.)

### Warranty

- 2-year

### Package Contents

- TC-KP12V
- Quick Installation Guide

All references to speed are for comparison purposes only. Product specifications, size, and shape are subject to change without notice, and actual product appearance may differ from that depicted herein.