



Technical Product Specification

CBM3r9MS

CBM3r7MS

CBM3r5MS

Version .1.0

Revision Date: 06/12/2023

Preface

The purpose of this document is to provide technical reference for customers and developers for the Moonstone family of products. Moonstone SKUS include CBM3r9MS, CBM3r7MS, and CBM3r5MS.

Contents

1.1. Overview	6
1.2. Processor	6
1.3. Integrated Graphics Processing Unit	7
1.4. Memory	7
1.5. Storage	8
1.5.1. SATA Interface	8
1.5.2. PCIe Interface	8
1.6. Networking	8
1.6.1. Wireless Networking Interface	9
2. Technical Reference	9
2.1. Headers – Top of Board	9
2.2. Battery Header	11
2.3. COM Header	12
2.4. APU Fan Header	13
2.5. Headers – Bottom of Board	14
2.6. M.2 for Storage	15
2.7. SATA Pinout	17
2.8. DDR5 SO-DIMM Socket	17
2.9. M.2 for Radio	18
2.10. Front Panel Header	20
2.11. USB 3.0 Header	21
2.12. RGB Header	22
2.13. Chassis I/O Connectors	23
3. Mechanical Dimensions	24
3.1. Motherboard Height	25
4. Version History	25

Tables

Table 1: APU Features	5
Table 2: APU Features	9
Table 3: Top Side Header Definitions	9
Table 4: Top Side Header Definitions	10
Table 5: COM Header Pinout	11
Table 6: APU Fan Header Pinout	12
Table 7: Bottom-Side Header Definitions	13
Table 8: M.2 Key-M SSD Pinout	14
Table 9: Front Panel Header Pinout	16
Table 10: M.2 Key-E Pinout	17
Table 11: Front Panel Header Pinout	19
Table 12: USB 3.0 Pinout	20
Table 13: RGB Pinout	21
Table 14: Front Side Connections Defined	22
Table 15: Back Side Connections Defined	23

Figures

Figure 1: Top Side Header Locations	9
Figure 2: Top Side Header Locations	10
Figure 3: COM Header	11
Figure 4: APU Fan Header Pinout	12
Figure 5: Bottom Side Header Locations	13
Figure 6: Front Panel Header	16
Figure 7: Front Panel Header	19
Figure 8: Front Side Connections	22
Figure 9: Back Side Connections	23
Figure 10: Motherboard Height Dimensions	23
Figure 11: Motherboard Dimensions	24

1. Description

The Moonstone is a small form factor powered by an AMD 7000 series mobile processor. This is great for everyday use in office environments, lite CAD development and video editing, and mid tier gaming.

1.1. Overview

Moonstone has the following features

- AMD 7940HS, 7735U, and 7535U,
- Radeon Phoenix (R9) or the AMD Rembrandt (R7)
- Two DDR5-4800 SO-DIMM Sockets
- M.2 slot for PCIe Gen4
- One 10/100/1000/2500Mbps Ethernet Ports
- M.2 slot for Wi-Fi/ Bluetooth radio
- Two HDMI ports (4k, 60Hz)
- Two USB-C 3.2
- One Front USB 2.0 Gen 2 Type-A Port
- One Front USB 3.2 Gen 2 Type-A Port
- Two Rear USB 3.2 Gen 2 Type-A Port
- 3.5mm Combination Microphone/Headphone Jack
- 19VDC 120W(R9) or 90W(R7 and R5) Power Supply Adapter
- 12V – 19V Input Power Supply Range

1.2. Processor

Moonstone has the following features

Table 1: APU Features

Moonstone	CBM3r9MS	CBM3r7MS	CBM3r5MS
AMD APU	7940HS	7735U	7535U
Cores	8	8	6
Threads	16	16	12
L1 Cache	8 x 32KB + 8 x 32KB	8 x 32KB + 8 x 32KB	6 x 32KB + 6 x 32KB
L2 Cache	8 x 1M	8 x 512KB	6 X 256KB

Moonstone	CBM3r9MS	CBM3r7MS	CBM3r5MS
L3 Cache	16MB	16MB	16M
Base Speed (Turbo) [MHz]	4000(5250)	2700(4800)	2900(4600)
TDP [W]	45W	28W	28W
Integrated Graphics	Radeon 780M	Radeon 680M	Radeon 660M

1.3. Integrated Graphics Processing Unit

Moonstone CPU has an integrated AMD graphics processing unit with the following features

Table 2: Graphics Features

	R9	R7	R5
Integrated Graphics	Radeon 780M	Radeon 680M	Radeon 660M
Graphics Max Dynamic Frequency[GHz]	2800	2400	1900
Graphics Output	HDMI 2.1, USB-C Alt DP		
Max Resolution (HDMI)	3840 x 2160		
Max Resolution (DP)	3840 x 2160		
DirectX Support	12		
HDCP Version support	2.1		
Maximum Number of Displays	4		

1.4. Memory

Moonstone has two 260-pin 1.2V DDR5 SDRAM SODIMMS sockets:

- Support for DDR5 4800
- Support for minimum 8GB single channel
- Support for maximum 64GB dual channel (32GB SODIMM per socket)

1.5. Storage

One M.2 PCIe Gen3/4 connector supporting M.2 22x80 (key type M) for Nvme Only. One SATA 6.0 Gb/s combined data and power connector for 2.5 inch SSD

1.5.1. SATA Interface

The SATA III port has a theoretical maximum transfer rate of 8Gbps.

1.5.2. PCIe Interface

The M.2 slot is a key-M slot for an PCIe 2280 M.2 module, up to 8TB in density. The PCIe 4.0 x4 interface on the port has a theoretical maximum transfer rate of 8Gbps.

1.6. Networking

Moonstone has an Intel i225v 2.5 gigabit ethernet controller that interfaces to the onboard RJ-45 connector that provides a 2.5 gigabit ethernet connection. The i225v controller features:

- Integrated MAC + BASE-T PHY.
- MDI (Copper) standard IEEE 802.3 Ethernet interface for 2500BASE-T, 1000BASE-T, 100BASE-TX, and 10BASE-TE applications (802.3, 802.3u, 802.3bz, and 802.3ab).
- MDI lane swap.
- IEEE 802.3 auto-negotiator.
- IEEE 802.3x and IEEE 802.3z compliant flow control support with software-controllable Rx thresholds and Tx pause frames.
- Automatic crossover detection function (MDI/ MDI-X).
- IEEE 1588 protocol and 802.1AS implementation.
- Supporting Time Sensitive Networking (TSN) Capabilities (IEEE 802.1Qbu, 802.3br, 802.1Qbv, 802.1AS-REV, 802.1p, Q, and 802.1Qav).
- Supports IEEE 802.3az – Energy Efficient Ethernet (EEE).
- Smart Power Down (SPD) at S0 no link/Sx no link.
- Full wake up support (APM and ACPI).
- MAC Power Management controls.
- Power Management Protocol Offload (Proxying).
- Latency Tolerance Reporting (LTR.)
- TCP/UDP, Ipv4 checksum offloads (Rx/ Tx).
- Transmit Segmentation Offloading (TSO) (Ipv4, Ipv6).
- Legacy, Message Signal Interrupt (MSI) and Message Signal Interrupt Extension (MSI-X).
- Support for packets up to 9.5 KB (Jumbo Frames).
- Descriptor ring management hardware for Transmit and Receive.

1.6.1. Wireless Networking Interface

Moonstone as an AX210 Wi-Fi card that supports:

- 2.4Ghz, 5Ghz, and 6E support.
- Maximum bandwidth of 2.4Gbps
- 2x2 transmit/receive streams.
- Supports IEEE WLAN standards IEEE 802.11a/b/d/e/g/h/i/k/n/r/u/v/w/ac/ax
- Supports authentications WPA and WPA2, 802.1X EAP-TLS, EAP-TTLS/MSCHAPv2, PEAPv0-MSCHAPv2 (EAP-SIM, EAP-AKA, EAP-AKA')
- 64-bit and 128-bit WEP,TKIP, 128-bit AES-CCMP, 256-bit AES-GCMP encryption supported
- Bluetooth® 5.2, BLE.

2. Technical Reference

2.1. Headers – Top of Board

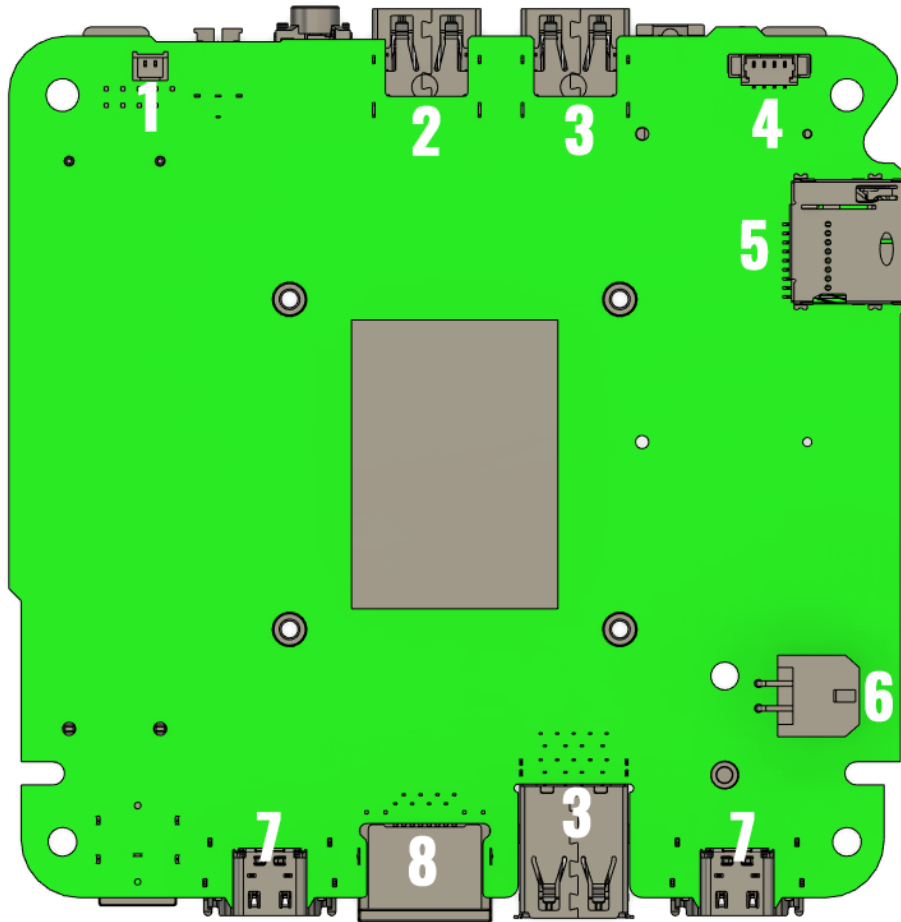


Figure 1: Top Side Header Locations

Table 3: Top Side Header Definitions

Identifier	Header
1	CMOS header
2	USB 2.0 Type A
3	USB 3.2 Type A
4	Fan Header
5	SD Card Reader

6	4 pin Power connector
7	USB 3.2 Type C
8	Ethernet

2.2. Battery Header

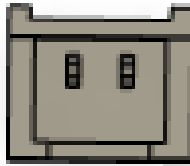


Figure 2: Top Side Header Locations

Table 4: Top Side Header Definitions

Pin	Signal
1	3V Positive(right)
2	Ground

2.3. COM Header



Figure 3: COM Header

Table 5: COM Header Pinout

Pin	Signal
1	DCD_1
2	RxD1
3	TxD1
4	DTR_1

Pin	Signal
5	GROUND
6	DSR_1
7	RTS_1
8	CTS_1
9	RI_1

2.4. APU Fan Header

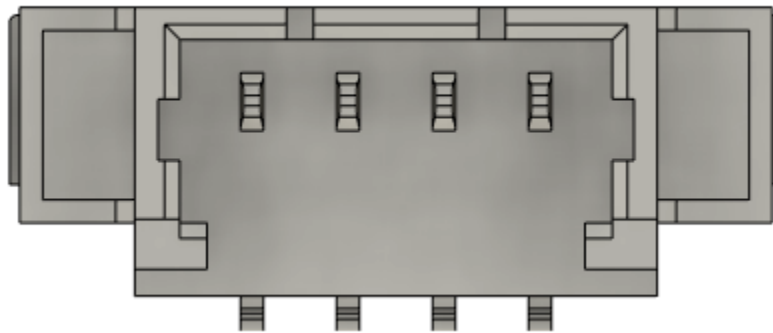


Figure 4: APU Fan Header Pinout

Table 6: APU Fan Header Pinout

Pin	Signal Definition
1	5V
2	FAN_TAC2
3	FAN_CRL2
4	GROUND

2.5. Headers – Bottom of Board

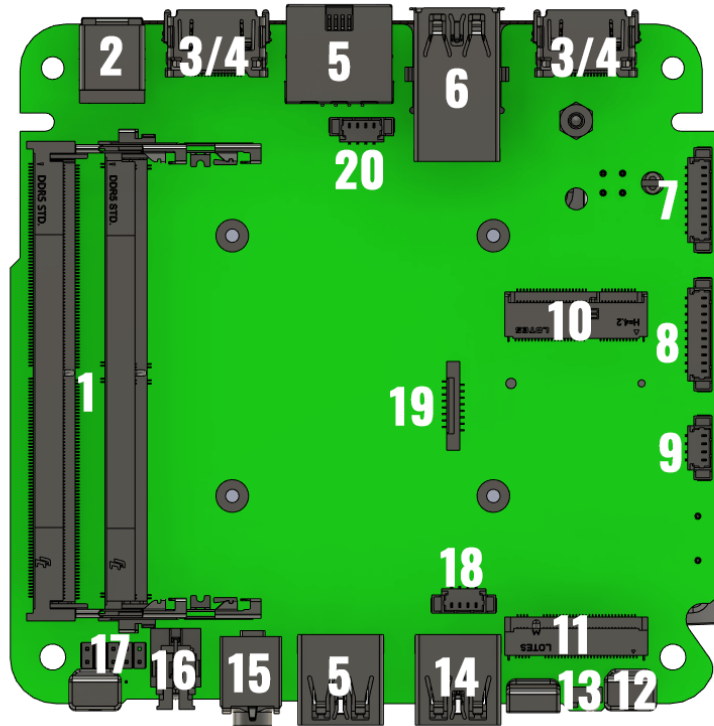


Figure 5: Bottom Side Header Locations

Table 7: Bottom-Side Header Definitions

Identifier	Header	Header	Identifier
1	SO DIMM Socket	M.2 2280 M Key	11
2	19V Power Plug	Microphone Array	12
3	HDMI 2.1 Port	Drive Activity LED	13
4	USB 3.2 Type C	USB 2.0 Type A	14
5	Ethernet	3.5mm Combination Jack	15
6	USB 3.2 Type A	Power Button	16
7	Com Header	Front Panel Header	17
8	USB 3.0 Header	RGB Header	18
9	USB 2.0 Header	SATA Connector	19
10	M.2 2230 B Key	CEC Header	20

2.6. M.2 for Storage

Table 8: M.2 Key-M SSD Pinout

Pin	Signal	Signal	Pin
74	3.3V	GND	75
72	3.3V	GND	73
70	3.3V	GND	71
68	N/A	PEDET	69
66	CONNECTOR KEY	N/A	67
64	CONNECTOR KEY	CONNECTOR KEY	65
62	CONNECTOR KEY	CONNECTOR KEY	63
60	CONNECTOR KEY	CONNECTOR KEY	61
58	N/A	CONNECTOR KEY	59
56	N/A	GND	57
54	WAKE#	PEFCLKp	55
52	CLKREQ#	PEFCLKn	53
50	PERST#	GND	51
48	N/A	PETp0	49
46	N/A	PETn0	47
44	N/A	GND	45
42	SMB_DATA	PERp0	43
40	SMB_CLK	PERn0	41
38	N/A	GND	39
36	N/A	PETp1	37
34	N/A	PETn1	35

32	N/A	GND	33
30	N/A	PERp1	31
28	N/A	PERn1	29
26	N/A	GND	27
24	N/A	PETp2	25
22	N/A	PETn2	23
20	N/A	GND	21
18	3.3V	PERp2	19
16	3.3V	PERn2	17
14	3.3V	GND	15
12	3.3V	PETp3	13
10		PETn3	11
8	N/A	GND	9
6	N/A	PERp3	7
4	3.3V	PERn3	5
2	3.3V	GND	3
		GND	1

2.7. SATA Pinout

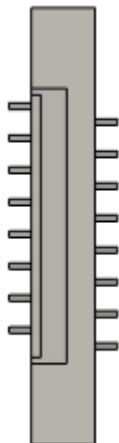


Figure 6: Front Panel Header

Table 9: Front Panel Header Pinout

Pin	Signal	Signal	Pin
1	5V	Ground	9
2	5V	Ground	10
3	5V	SATA_RXOP	11
4		SATA_RXON	12
5		Ground	13
6		SATA_TXOP	14
7		SATA_TXON	15
8	SATA_DEVSLP0	Ground	16

2.8. DDR5 SO-DIMM Socket

Moonstone has two 260-pin 1.2V DDR5 SDRAM SODIMMS sockets:

- Support for DDR5 4800
- Support for minimum 8GB single channel
- Support for maximum 64GB dual channel (32GB SODIMM per socket)

2.9. M.2 for Radio

Table 10: M.2 Key-E Pinout

Pin	Signal	Signal	Pin
74	3.3V	GND	75
72	3.3V	GND	73
70	3.3V	GND	71
68	N/A	PEDET	69
66	CONNECTOR KEY	N/A	67
64	CONNECTOR KEY	CONNECTOR KEY	65
62	CONNECTOR KEY	CONNECTOR KEY	63
60	CONNECTOR KEY	CONNECTOR KEY	61
58	N/A	CONNECTOR KEY	59
56	N/A	GND	57
54	WAKE#	PEFCLKp	55
52	CLKREQ#	PEFCLKn	53
50	PERST#	GND	51
48	N/A	PETp0	49
46	N/A	PETn0	47
44	N/A	GND	45
42	SMB_DATA	PERp0	43
40	SMB_CLK	PERn0	41
38	N/A	GND	39
36	N/A	PETp1	37
34	N/A	PETn1	35

Pin	Signal	Signal	Pin
32	N/A	GND	33
30	N/A	PERp1	31
28	N/A	PERn1	29
26	N/A	GND	27
24	N/A	PETp2	25
22	N/A	PETn2	23
20	N/A	GND	21
18	3.3V	PERp2	19
16	3.3V	PERn2	17
14	3.3V	GND	15
12	3.3V	PETp3	13
10		PETn3	11
8	N/A	GND	9
6	N/A	PERp3	7
4	3.3V	PERn3	5
2	3.3V	GND	3
		GND	1

2.10. Front Panel Header

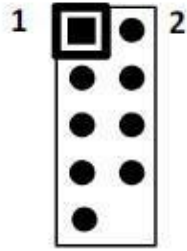


Figure 7: Front Panel Header

Table 11: Front Panel Header Pinout

Pin	Signal
1	HLED+
2	PWR_BTN_LED+
3	HLED-
4	PWR_BTN_LED-
5	GROUND/RESET
6	PANSHW
7	SYS_RST
8	GROUND
9	NOT USED
10	INTENTIONALLY BLANK

2.11. USB 3.0 Header



Figure 8: USB 3.0 Header

Table 12: USB 3.0 Pinout

Pin	Signal
1	USB_VBUS
2	USB1_N
3	USB1_P
4	GROUND
5	USBSS1_TX_N
6	USBSS1_TX_P
7	GROUND
8	USBSS1_RX_N
9	USBSS1_RX_P

2.12. RGB Header

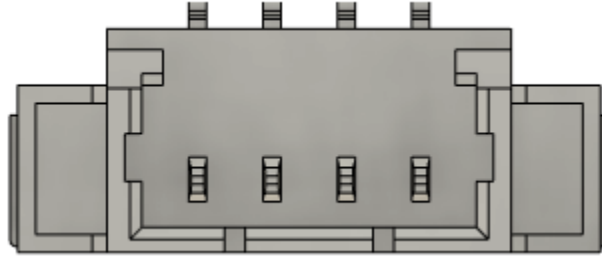


Figure 9: RGB Header

Table 13: RGB Pinout

Pin	Signal
1	12V Power (Left)
2	Red
3	Green
4	Blue (Right)

2.13. Chassis I/O Connectors

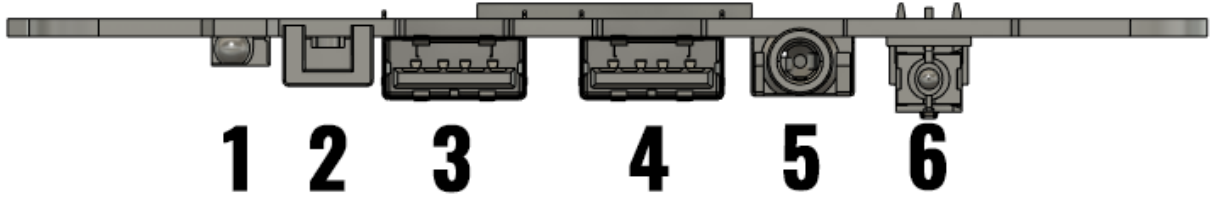


Figure 8: Front Side Connections

Table 14: Front Side Connections Defined

Identifier	Connector
1	Drive Indicator LED
2	Microphone Array
3	USB 2.0 Type A
4	USB 3.2 Type A
5	3.5mm Combination Jack
6	Power Button

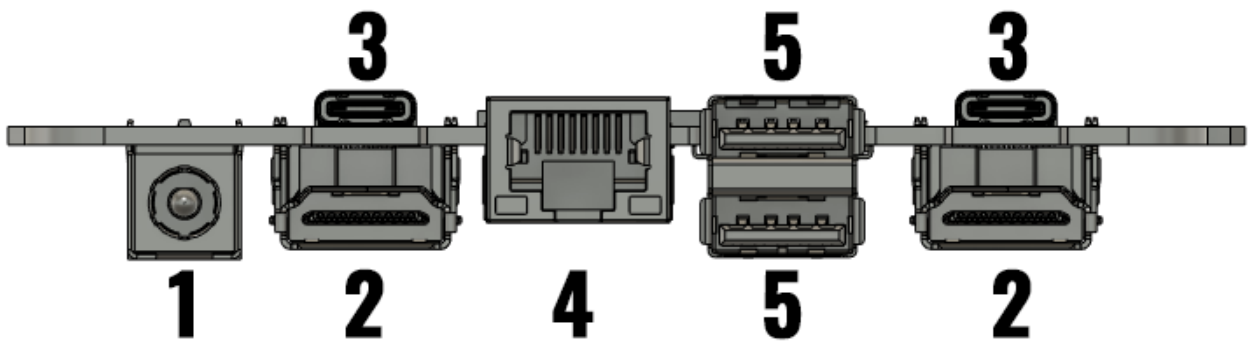


Figure 9: Back Side Connections

Table 15: Back Side Connections Defined

Identifier	Connector
1	5.5mm Barrel Power connector
2	HDMI 2.1
3	USB 3.2 Type C
4	Ethernet
5	USB 3.2 Type A

3. Mechanical Dimensions



Figure 10: Motherboard Height Dimensions

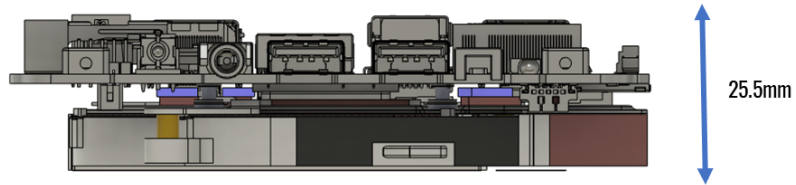


Figure 11: Motherboard Dimensions

4. Version History

Version	Date	Comments
0.1	6/12/2023	Initial Creation
1.0	6/12/2023	Release Version.