



Vertiv™ Liebert® EXS

Three Phase UPS

V-Models 15, 20, 30 and 40kVA
208/220V Tower

Online Double Conversion
UPS offers the Highest
level of Power Protection



Highlights

The Liebert® EXS UPS V-Model is an on-line, three-phase (in/out), 208/220V integrated UPS, optimized with a flexible design.

Key Benefits

- Standard configurations offer a reliable and economical power solution in 15, 20, 30 and 40kVA capacities.
- Integrated solution supports faster deployments
- Easy to install and maintain owing to front access design
- Diverse applications scenarios: In-Row, Room and against the wall
- Maximum efficiency and eco mode saves energy
- Flexible UPS, power distribution and battery arrangements to meet capacity and runtime demands
- High power factor delivers more usable power
- Integrated maintenance by-pass option ensures greater availability
- Top and rear entry only cable access; Front and top only service access
- Intelligent monitoring and management offers improved visibility and control

Offers reliable, high-quality AC Power to a Variety of IT Systems:

- Small data rooms
- IT closets, servers and storage
- Branch, small-midsize IT systems
- Medical/lab testing equipment
- High Availability
- VoIP
- ISDN and frame relay applications
- Storage systems
- Security systems

Consider the Liebert® EXS UPS V-Model for Room and Row 3-phase applications including IT Edge.



Flexible And Optimized Design



Fast, Easy Installation and Serviceability



Maximum Reliability and Efficiency



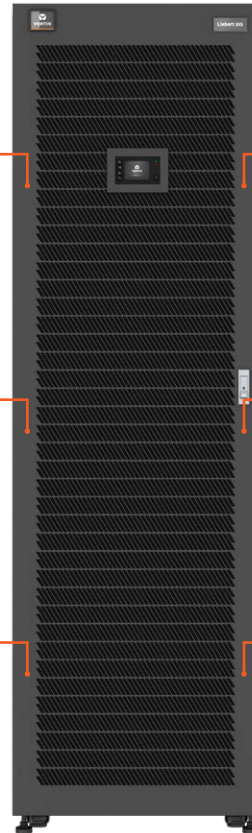
Complete Integrated Solution



Flexible monitoring and management options



Runtime Expandability



High Availability


Reliable performance and high availability are derived through a proven on-line, double conversion, transformer-free design.

- Integrated Maintenance Bypass ensures critical loads operate even during service
- Short circuit withstand rating up to 30kA
- Temperature compensating battery charger prolongs battery life

What's In The Box?

- UPS
- Quick Installation Guide
- Vertiv™ Power Insight Management Software (free download from Vertiv.com)
- IS-Unity DP Communication Card
- Safety Instructions
- WEE Recycling Sheet (ISO 14001 Compliance)

Why choose Vertiv™ Liebert® EXS UPS V-Model?



Key Product Attributes

- Small footprint w/ internal battery (6-18 min)
- External Battery Cabinet Options (21- 72 min)
- Unity Power Factor (kW=kVA)
- High efficiency (93.4-94%)
- Easy to operate and monitor; integrate
- Installation flexibility and easy serviceability
- Integrated Maintenance Bypass
- Vertiv™ LIFE™ Services Compatible

Key Applications and Market Verticals for Liebert® EXS UPS V-Model



Banking

- Highly reliable back-up for banks, financial services and Insurance companies
- IT branches- support server room computers, ATMS and other onsite equipment
- Protect critical processes and customer data in case of an outage



Retail

- Highly reliable back-up for retail stores back offices and ecommerce operations
- Maintain uptime for critical daily business operations
- Protect inventory log data in case of an outage



Healthcare

- Provides maximum equipment uptime to non-life critical medical equipment
- Maintain access to critical electronic health records for continuous patient care
- Support back up operations and critical data at Urgent Cares, local pharmacies (e.g., CVS, Walgreens etc.)

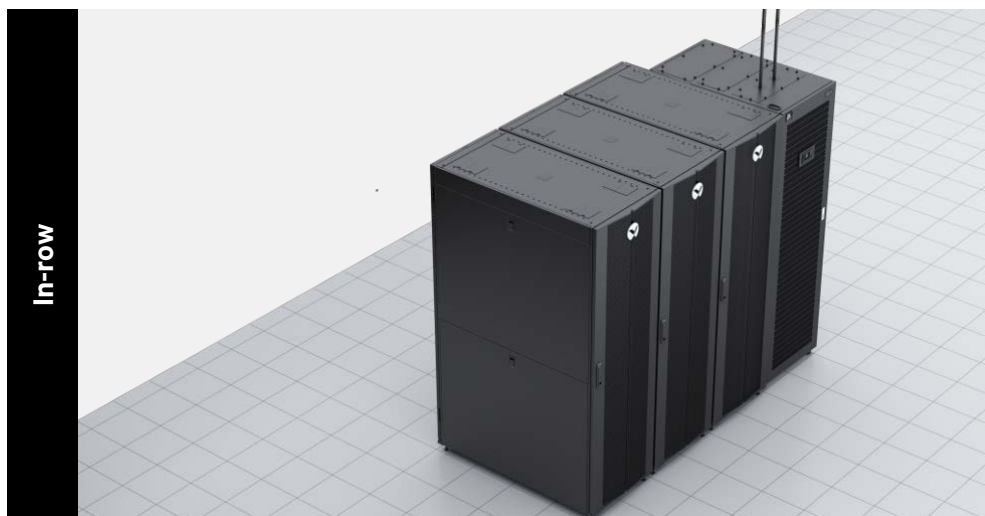


Manufacturing And Light Industrial

- Deliver efficient back-up power to small medium mfg. production lines
- Reliable back up power for testing environments of manufacturing operations to avoid interruptions and maintain quality
- Reduce downtime and support monitoring systems to maintain processes
- Ideal for room-based applications in electrical rooms of industrial facilities

Seamlessly Integrate Aesthetic Design into Your Infrastructure

- Ideal for **In-Row** server rack applications
- Suitable to be installed **adjacent to the wall**
- Suitable to be installed against the wall using **optional** top fan kit
- The **top fan option** is to allow the UPS to vent out through the top, instead of the rear. This allows the unit to be placed directly against the wall, limiting the amount of required footprint needed for the unit to operate



With NO Top Fan Kit



With (Optional) Top Fan Kit

Simplified installation and easy serviceability

- IPower modules slide in for simplified installation
- Clearance at top of the cabinet is 24in.
- At the front 3ft. Clearance is needed
- Front door opening is more than 180 (deg).
- Serviceability has been made easier with its easy front access design eliminating all side and rear service clearances requirement
- For maintenance and repair Vertiv world class services team and multiple services options enables hassle free experience

1 Input output connections

2 Integrated Maintenance Bypass; Available Circuit Breakers Section:

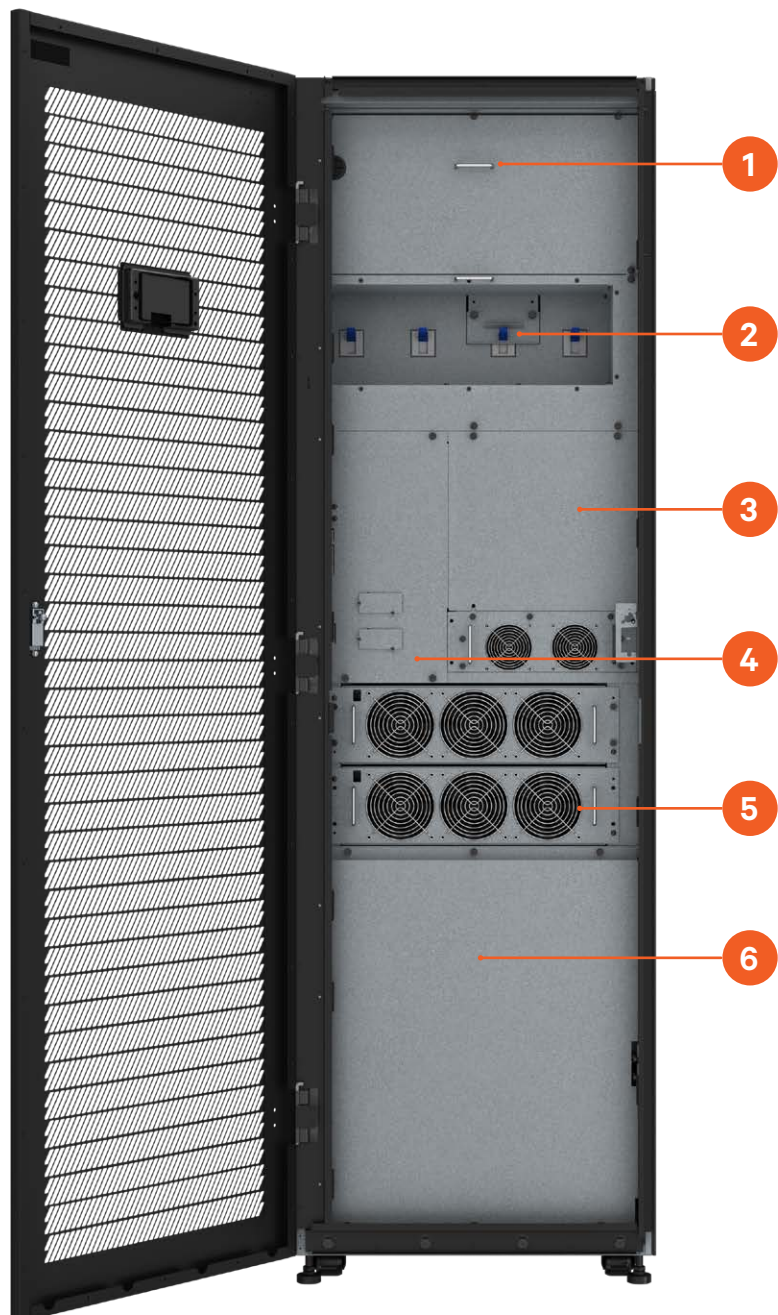
- Rectifier input breaker (RIB)
- Maintenance-isolation breaker (MIB)
- Bypass-input breaker (BIB)
- Maintenance-bypass breaker (MBB)

3 Dry Contacts input/output

4 Power Module

5 Vertiv™ Liebert® Intellislot™ Ports

6 Battery Trays



Robust and Reliable Design for Optimal Performances

The Liebert® EXS UPS V-Model is a transformer-free UPS offering exceptional features for mission-critical applications. With best-in-class efficiency of up to 93.4%, double conversion mode and upto 97% in ECO mode. Hence, Liebert EXS UPS ensures **remarkable operational cost savings**, reducing both the Total Cost of Ownership (TCO) and environmental impact giving the confidence of getting the most out of the power source, and saving on energy bills.

The Liebert EXS UPS V-Model has a unity output power factor and high- power density, which provides the **highest possible active power** in a room and row-based design unit applicable to any network closet. This means critical devices have necessary reliable power and protection without sacrificing valuable space, making it perfect for installations where space is limited.

Maximum Uptime

Liebert EXS UPS comes with internal batteries having a long life span of 8-10 years. With **optimized internal runtime** and with the capability of additional runtime obtained by optional external battery cabinets, the Liebert EXS UPS V-Model offers absolute reliability and delivers continuous power protection, ensuring that critical devices remain powered in the event of an outage, preventing any loss of data or productivity.

These benefits make the Liebert EXS UPS V-Model ideal for a wide range of **mission-critical applications**, including IT installations, transportation, healthcare, retail, and government facilities

Tolerates High Ambient Temperatures

Internal components and circuitry of Liebert EXS UPS V-Model are designed to seamlessly operate up to 40 °C without any capacity impact and further can sustain high ambient temperature up to 50 °C with auto-derating.

Integrated Autonomy

The Liebert EXS UPS V-Model comes equipped with internal battery, maintenance bypass, and optional receptacle distribution in one, simple package. Liebert EXS provides an **optimized integrated autonomy** which results in back up times in a compact footprint.



**93.4%
Efficiency**



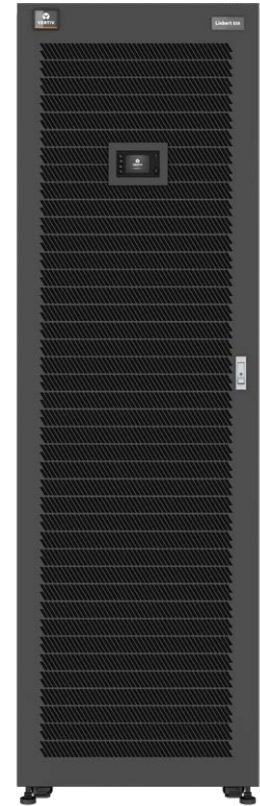
**Rising
temperature**



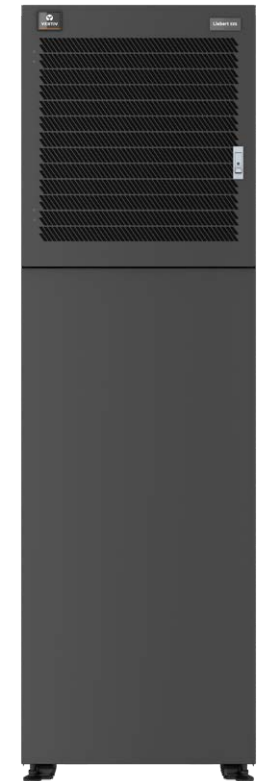
**97% Eco
Mode**



**Battery
runtime**



**Vertiv™ Liebert®
EXS UPS V-Model**



**Vertiv™ Liebert® EXS V-Model
External Battery Cabinet**

Vertiv™ Liebert® EXS UPS V-Model 15 to 40 kVA Features

High power factor (1.0)
More usable power enables more connected loads saving space and costs.

Factory Installed Network Card
Vertiv™ Liebert® IS-UNITY DP card enables Remote Management

Internal Battery Cabinets with auto-detection
Be confident the UPS is set up correctly to report available runtime when used with available optional external battery cabinets.

Product warranty
Standard 1 year warranty along with extended warranty options and service contracts.

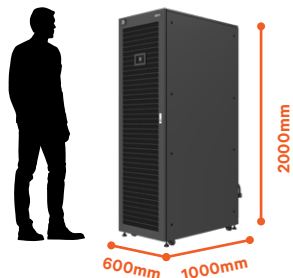
Internal Maintenance Bypass
Facilitates UPS maintenance if needed, without having to shutdown the connected equipment.

Efficiency (up to 93.4%) in online mode
Energy Star 2.0 certification. Higher efficiency means an optimized energy management and lower heat dissipation, for energy savings and improved reliability.

Compact Design
Space saving UPS footprint provides space optimization and flexible installation in room/row configuration.

Vertiv™ Liebert® EXS Three Phase UPS

V-Model



Vertiv™ Liebert®
EXS UPS V-Model



Vertiv™ Liebert®
EXS V-Model External
Battery Cabinet

Liebert® EXS UPS V-Model Models SKU's

Model Numbers

"With NO Top Fan Kit along with Corresponding External Battery Cabinets SKU's" [UPS can take only up to 1 EBC]

EXSV-15KN

- EXSV-EBC1
- EXSV-EBC2

EXSV-20KN

- EXSV-EBC1
- EXSV-EBC2

EXSV-30KN

- EXSV-EBCXR1
- EXSV-EBCXR2

EXSV-40KN

- EXSV-EBCXR1
- EXSV-EBCXR2

EXSV-15KXRN

- EXSV-EBCXR1
- EXSV-EBCXR2

EXSV-20KXRN

- EXSV-EBCXR1
- EXSV-EBCXR2

Model Numbers

"With (Optional)Top Fan Kit along with Corresponding External Battery Cabinets SKU's" [UPS can take only up to 1 EBC]

EXSV-15KTN

- EXSV-EBC1
- EXSV-EBC2

EXSV-20KTN

- EXSV-EBC1
- EXSV-EBC2

EXSV-30KTN

- EXSV-EBCXR1
- EXSV-EBCXR2

EXSV-40KTN

- EXSV-EBCXR1
- EXSV-EBCXR2

EXSV-15KXRN

- EXSV-EBCXR1
- EXSV-EBCXR2

EXSV-20KXRN

- EXSV-EBCXR1
- EXSV-EBCXR2

Ratings

15kVA/15kW

20kVA/20kW

30kVA/30kW

40kVA/40kW

UPS Dimensions

600x1000x2000 (mm)

Liebert® EXS UPS V-Model Pre-Configured SKUs-"With no top fan kit"

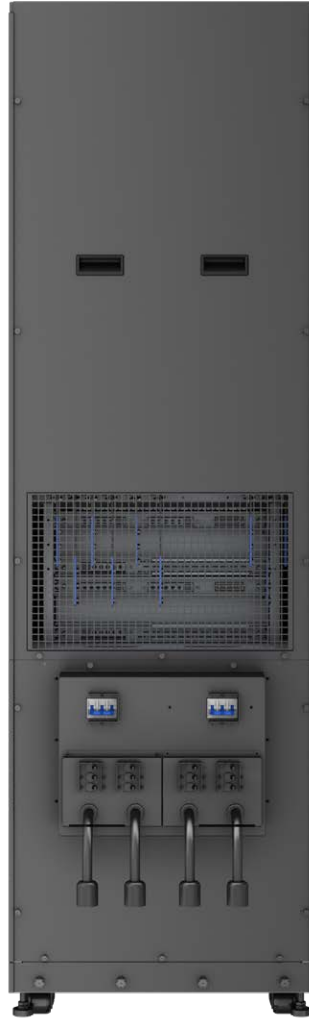
Preconfigured sku	Rating	Description	Runtime (mins)	
			Full load	Half Load
EXSV-15KN	15kVA/15kW	Liebert® EXS 15kVA UPS (V-Model) with internal VRLA battery and IS-UNITY-DP network Communication Card	15	32
EXSV-EBC1		Liebert EXS External Battery Cabinet, 37.5Ah, 1 String VRLA	41	94
EXSV-EBC2		Liebert EXS External Battery Cabinet, 37.5Ah, 2 String VRLA	71	159
EXSV-15KXRN		Liebert EXS 15kVA UPS (V-Model) with internal VRLA extended runtime battery (larger battery) and IS-UNITY-DP network Communication Card	18	49
EXSV-EBCXR1		Liebert EXS External Battery Cabinet, 50Ah, 1 String VRLA	59	133
EXSV-EBCXR2		Liebert EXS External Battery Cabinet, 50Ah, 2 String VRLA	100	221
EXSV-20KN	20kVA/20kW	Liebert EXS 20kVA UPS (V-Model) with internal VRLA battery and IS-UNITY-DP network Communication Card	11	31
EXSV-EBC1		Liebert EXS External Battery Cabinet, 37.5Ah, 1 String VRLA	28	69
EXSV-EBC2		Liebert EXS External Battery Cabinet, 37.5Ah, 2 String VRLA	51	117
EXSV-20KXRN		Liebert EXS 20kVA UPS (V-Model) with internal VRLA extended runtime battery (larger battery) and IS-UNITY-DP network Communication Card	13	36
EXSV-EBCXR1		Liebert EXS External Battery Cabinet, 50Ah, 1 String VRLA	41	96
EXSV-EBCXR2		Liebert EXS External Battery Cabinet, 50Ah, 2 String VRLA	71	162
EXSV-30KN	30kVA/30kW	Liebert EXS 30kVA UPS (V-Model) with internal VRLA battery and IS-UNITY-DP network Communication Card	10	26
EXSV-EBCXR1		Liebert EXS External Battery Cabinet, 50Ah, 1 String VRLA	30	69
EXSV-EBCXR2		Liebert EXS External Battery Cabinet, 50Ah, 2 String VRLA	51	112
EXSV-40KN	40kVA/kW	Liebert EXS 40kVA UPS (V-Model) with internal VRLA battery and IS-UNITY-DP network Communication Card	6	18
EXSV-EBCXR1		Liebert EXS External Battery Cabinet, 50Ah, 1 String VRLA	21	49
EXSV-EBCXR2		Liebert EXS External Battery Cabinet, 50Ah, 2 String VRLA	36	81

Vertiv™ Liebert® EXS UPS V-Model Pre-Configured SKUs-"With Top Fan Kit"

Preconfigured sku	Rating	Description	Runtime (mins)	
			Full load	Half Load
EXSV-15KTN	15kVA/15kW	Liebert® EXS 15kVA UPS (V-Model) with internal VRLA battery, top fan venting, and IS-UNITY-DP network Communication Card	15	32
EXSV-EBC1		Liebert EXS External Battery Cabinet, 37.5Ah, 1 String VRLA	41	94
EXSV-EBC2		Liebert EXS External Battery Cabinet, 37.5Ah, 2 String VRLA	71	159
EXSV-15KXRTN		Liebert EXS 15kVA UPS (V-Model) with internal VRLA extended runtime battery (larger battery), top fan venting, and IS-UNITY-DP network Communication Card	18	49
EXSV-EBCXR1		Liebert EXS External Battery Cabinet, 50Ah, 1 String VRLA	59	133
EXSV-EBCXR2		Liebert EXS External Battery Cabinet, 50Ah, 2 String VRLA	100	221
EXSV-20KTN	20kVA/20kW	Liebert EXS 20kVA UPS (V-Model) with internal VRLA battery, top fan venting, and IS-UNITY-DP network Communication Card	11	31
EXSV-EBC1		Liebert EXS External Battery Cabinet, 37.5Ah, 1 String VRLA	28	69
EXSV-EBC2		Liebert EXS External Battery Cabinet, 37.5Ah, 2 String VRLA	51	117
EXSV-20KXRTN		Liebert EXS 20kVA UPS (40kVA Frame) with internal VRLA extended runtime battery (larger battery), top fan venting, and IS-UNITY-DP network Communication Card	13	36
EXSV-EBCXR1		Liebert EXS External Battery Cabinet, 50Ah, 1 String VRLA	41	96
EXSV-EBCXR2		Liebert EXS External Battery Cabinet, 50Ah, 2 String VRLA	71	162
EXSV-30KTN	30kVA/30kW	Liebert EXS 30kVA UPS (V-Model) with internal VRLA battery, top fan venting, and IS-UNITY-DP network Communication Card	10	26
EXSV-EBCXR1		Liebert EXS External Battery Cabinet, 50Ah, 1 String VRLA	30	69
EXSV-EBCXR2		Liebert EXS External Battery Cabinet, 50Ah, 2 String VRLA	51	112
EXSV-40KTN	40kVA/kW	Liebert EXS 40kVA UPS (40kVA Frame) with internal VRLA battery, top fan venting, and IS-UNITY-DP network Communication Card	6	18
EXSV-EBCXR1		Liebert EXS External Battery Cabinet, 50Ah, 1 String VRLA	21	49
EXSV-EBCXR2		Liebert EXS External Battery Cabinet, 50Ah, 2 String VRLA	36	81

Liebert® EXS UPS V-Model Series Pre-Configured SKUs-Wire Sizing Guide

EXSV-Model UPS Ratings	Corresponding SKU's	Recommended Wire Size	Recommended Breaker Size	Recommended Lugs	Number of wires
15	EXSV-15KN	3 AWG	70A	Thomas and Betts: 256-30695-257	5 (L-L-L-N-G)
	EXSV-15KXRN				
	EXSV-15KTN				
	EXSV-15KXRTN				
20	EXSV-20KN	2 AWG	90A	Thomas and Betts: 256-30695-257	5 (L-L-L-N-G)
	EXSV-20KXRN				
	EXSV-20KTN				
30	EXSV-30KN	3/0 AWG	150A	Thomas and Betts: 54211	5 (L-L-L-N-G)
	EXSV-30KTN				
40	EXSV-40KN	4/0 AWG	175A	Thomas and Betts: 54212	5 (L-L-L-N-G)
	EXSV-40KTN				
EXSV-Model External Battery Cabinets	EXSV-EBC1 EXSV-EBC2 EXSV-EBCXR1 EXSV-EBCXR2	4/0 AWG		Thomas and Betts: 54212	3 (L-L-G)



Power Distribution

Fast, simple and flexible power distribution is accomplished using either a straight hardwired approach or by applying various optional distribution PODs (power output distribution) for quick and easy receptacle deployments. In addition, users can mix and match power distribution assemblies.

Distribution Options	Qty of Receptacles	Part Number
Hardwire	-	Does Not Apply
L21-30R	2	PD3-001
L21-20R	2	PD3-009
L6-30R	6	PD3-002
L6-20R	6	PD3-006
L5-30R	6	PD3-003
L5-20R	6	PD3-005
IEC60309 4W+G	1	PD3-011
IEC60309 3W+G	1	PD3-004

Network communications and environmental sensors (Standard on all models of Liebert® EXS UPS)

Network Communications	IS-Unity DP	Intellislot™ web card for SNMP and web management. Supports environmental sensors.
	IS-RELAY	Intellislot™ Interface Kit for Relay Contacts
Environmental Sensors (Compatible with optional Liebert® network card IS-UNITY DP)	SN-Z01	Integrated cable with single temperature sensor
	SN-Z02	Integrated cable with three temperature sensors
	SN-Z03	Integrated cable with three temperature and one humidity sensors
	SN-T	Modular with single temperature sensor
	SN-2D	Modular with two door contact inputs
	SN-3C	Modular with three dry contact inputs
	SN-L20	Modular leak zone sensor with 20 -foot cable
UPS manageability options	Vertiv™ Power Insight Software Management	Vertiv™ Power Insight is a complimentary web-based software designed to monitor up to 100 Vertiv™ UPSs and Vertiv™ rPDUs

Intelligent Communications

Vertiv connects and protects your network with core-to-edge solutions and unmatched expertise. For maximum visibility and effective monitoring in one view, pair your Vertiv™ UPS with a software solution.

Vertiv™ Environet™ Alert

Environet™ Alert provides industry companies with critical facility monitoring software that is affordable and easy to use. This solution delivers superior monitoring, alerting, trending and data organization. Get monitoring, alerting and trending at a price that's right for your business.

Vertiv™ Power Insight

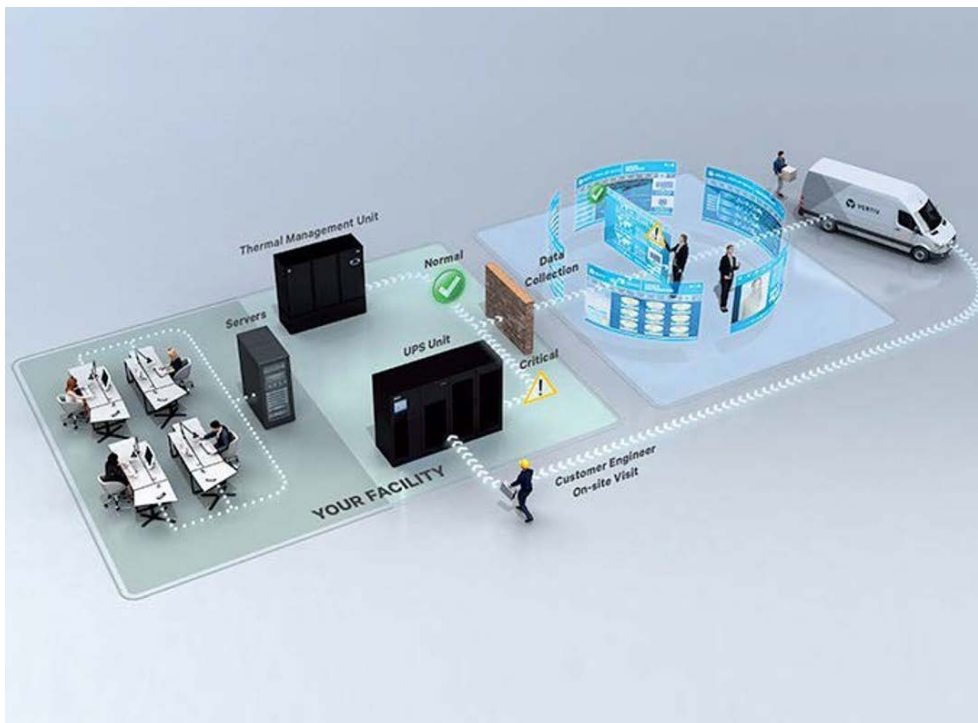
Power Insight is a complimentary web-based software designed for users with a distributed infrastructure that need a way to manage multiple devices. It is a simple to install, easy to use solution that provides a single interface for up to 100 UPSs or rPDUs. Visit the [product page](#) to download.



Service and Support

We get you started and keep you going. Only Vertiv Services can provide the degree of the support required to ensure the availability needed for critical systems. Several programs are available to meet the needs of your operation.

LIFE™ Remote Diagnostic Services for Rapid Response



Refer to page for service SKUs

This UPS can monitor:



- Capacity**
- Temperature**
- Humidity**
- Access**
- Leaks**

IS-UNITY-DP - Supports remote and local environmental monitoring. Compatible with the Vertiv™ Platform. Connect to IT networks and building management systems (BACNET/MODBUS).

Uptime assurance

- Continuous monitoring for early detection of trends and operating anomalies
- Analysis and interpretation of alarm and status messages

Rapid incident response

- Automatic transmission of data for analysis
- Concurrent diagnosis and dispatch of engineer to site
- Shipment of parts for corrective maintenance

Increased insight and ease of management

- Notification of operating conditions that may impact system health
- Periodic trend and analysis reports
- Integration of remote and on-site services to ensure business continuity

Liebert® EXS UPS V-Model 15-40kVA Services and Extended Warranties

Power Startup Services - Summary

- Installation includes mounting and start-up of new UPS or EBC (excludes hard-wired applications).
- Services performed by Vertiv factory trained technician
- Services performed 7 X 24, excluding national holidays within the 48 contiguous states and Hawaii
- Removal and disposal of existing UPS or EBC equipment, if selected

Startups SKU's- Required

Equipment Model / Type	Part Number	Description
Liebert® EXS UPS V-Model 15kVA 20kVA, 30kVA and 40kVA	SUEXSV10-40U7	Startup 7x24 EXS V-Model 15-40kVA
	SUEXSV10U-40UM	Startup M-F EXS V-Model 15-40kVA

Extended Warranties for Liebert® EXS UPS V-Model

Extended Warranties	Parts and Labor Warranty	Warranty Premier	Warranty Premier+
Equipment Model / Type	Part Number	Part Number	
Liebert® EXS 15 and 20kVA			
12 Months	12MTHWARPARTSLABACPEXSV20	12MTHWARPREFACP1PMEXSV20	12MTHWARPREMACP1PMEXSV20
18 Months	18MTHWARPARTSLABACPEXSV20		
24 Months		24MTHWARPREFACP1PMEXSV20	24MTHWARPREMACP1PMEXSV20
Liebert® EXS 30 and 40kVA			
12 Months	12MTHWARPARTSLABACPEXSV40	12MTHWARPREFACP1PMEXSV40	12MTHWARPREMACP1PMEXSV40
18 Months	18MTHWARPARTSLABACPEXSV40		
24 Months		24MTHWARPREFACP1PMEXSV40	24MTHWARPREMACP1PMEXSV40

Extended Warranties



Parts and Labor Warranty



Parts Included

All parts included except EOL components and consumables



Labor Included

The cost of labor is included



Warranty Premier



Parts Included

All parts included except EOL components and consumables



Labor Included

The cost of labor is included



Preventive Maintenance

PM (8x5) Visit(s) within Warranty Extension to ensure continuous and optimal equipment performance



Warranty Premier+



Parts Included

All parts included except EOL components and consumables



Labor Included

The cost of labor is included



Preventive Maintenance

PM (7x24) Visit(s) within Warranty Extension to ensure continuous and optimal equipment performance



Response Time

If an anomaly occurs, CE visit is granted within known and established amount of time

Vertiv™ Liebert® EXS UPS V-Model 15-40 kVA Service Contracts

Service Contracts	PM Only 8x5	PM Only 24x7	Basic 1PM24x7	Essential 1PM8X5	Preferred 1PM24X7
Equipment Model / Type	Part Number	Part Number	Part Number	Part Number	Part Number
Liebert® EXS 15 and 20kVA	MUEXSV208-15PF1	MUEXSV208-15P71	MUEXSV208-15BA1	MUEXSV208-15ES1	MUEXSV208-15PR1
Liebert EXS 30 and 40kVA	MUEXSV208-40PF1	MUEXSV208-40P71	MUEXSV208-40BA1	MUEXSV208-40ES1	MUEXSV208-40PR1

Labor Warranty Supplement

1WARACPLAB-B

Service Contracts	PM Only 8x5	PM Only 24x7	Basic	Essential	Preferred
On-Site Service:					
<ul style="list-style-type: none"> Includes 1 Preventive Maintenance Service, scheduled by the customer between 8am-5pm, Monday-Friday (excluding national holidays) 	✓			✓	
<ul style="list-style-type: none"> Includes 1 Preventive Maintenance Service, scheduled by the customer at the customer's convenience 24x7 (excluding national holidays). 		✓			✓
<ul style="list-style-type: none"> Includes a Performance Evaluation inspection performed immediately after the completion of an emergency visit. 			✓		
Customer Support:					
Includes access to the Customer Resolution Center (1-800-543-2378) and the Vertiv Customer Services Network Online Internet portal.	✓	✓	✓	✓	✓
Service Professional:					
Performed by Vertiv factory-trained and authorized technician equipped with Vertiv Proprietary tools and software. Vertiv CE's and Vertiv Partners are the only approved OEM service providers for Vertiv products.	✓	✓	✓	✓	✓
Response Time:					
Guaranteed 4-hour on-site emergency response, 7 days/week, 24 hours/day, within 150 miles of a Vertiv's Service City.			✓	✓	✓
Parts:					
Includes parts coverage.			✓	✓	✓
Labor and Travel:					
Includes 100% labor and travel coverage 7 days/week, 24 hours/day, within the 48 contiguous states and Hawaii.			✓	✓	✓
Internal Battery Coverage:					
Includes parts, labor, disposal and battery jars as required - up to 1 string of battery jars per year, not accumulated over contract term				✓	✓
Battery Recycling:					
Includes battery recycling as required, with documentation meeting EPA requirements				✓	✓

Battery Runtimes in Minutes- (37.5 Ah) Battery Runtimes in Minutes- (37.5 Ah)

Applicable model numbers: EXSV-EBC1; EXSV-EBC2

UPS Model	Battery String Qty.	100%	90%	80%	70%	60%	50%	40%	30%	20%	10%
15kVA		15 kW	13.5 kW	12 kW	11.25kW	9 kW	7.5 kW	6 kW	4.5 kW	3.75 kW	1.5 kW
	1	12	14	17.5	20.5	25	32	44	65	108	244.5
	2	41.5	47.5	58	66	77	94.5	122	170	267	577
		100%	90%	80%	70%	60%	50%	40%	30%	20%	10%
20kVA		20 kW	18 kW	16 kW	15 kW	12 kW	10 kW	8 kW	6 kW	5 kW	2 kW
	1	11.5	13.5	16	19.5	25.5	31.5	41	57	90.5	204.5
	2	28	32.5	38	45.5	58	69.5	88	122	193.5	428.5

Battery Runtimes in Minutes- (50 Ah)

Applicable model numbers: EXSV-EBCXR1; EXSV-EBCXR2

UPS Model	Battery String Qty.	100%	90%	80%	70%	60%	50%	40%	30%	20%	10%
15kVA		15 kW	13.5 kW	12 kW	11.25kW	9 kW	7.5 kW	6 kW	4.5 kW	3.75 kW	1.5 kW
	1	18	21	26.5	31	37.5	48.5	65.5	94.5	151	342
	2	59.5	67.5	81	92	107.5	133	171.5	235.5	369	782.5
		100%	90%	80%	70%	60%	50%	40%	30%	20%	10%
20kVA		20 kW	18 kW	16 kW	15 kW	12 kW	10 kW	8 kW	6 kW	5 kW	2 kW
	1	13	15.5	18.5	22	29	36.5	48.5	70.5	113	257.5
	2	41.5	47.5	55	64.5	81	96.5	123.5	171.5	269	594.5
		100%	90%	80%	70%	60%	50%	40%	30%	20%	10%
30kVA		30 kW	27kW	24 kW	22.5 kW	18 kW	15 kW	12 kW	9 kW	7.5 kW	3 kW
	1	11.5	13.5	16	19.5	25.5	31.5	41	57	90.5	204.5
	2	28	32.5	38	45.5	58	69.5	88	122	193.5	428.5
		100%	90%	80%	70%	60%	50%	40%	30%	20%	10%
40kVA		40 kW	38 kW	32 kW	30 kW	24 kW	20 kW	16 kW	12 kW	10 kW	4 kW
	1	6.5	8	9.5	11.5	14	18.5	25	38	58	128.5
	2	21.5	24.5	28.5	33	39.5	49	64	93	140	291.5

UPS Specifications

Power Rating kVA/kW (PF=1)

		15	20	30	40
General Specifications	UPS Technology	On-Line Double Conversion			
	Input AC Specification				
	Input Voltage	208/120, 220/127VAC, 60Hz 3-phase, 4-wire plus ground			
	Frequency Range	40-70Hz			
Output AC Specifications	Voltage	208/120, 220/127VAC, 60Hz 3-phase, 3- or 4-wire plus ground			
	Power Factor	1.0 (Unity)			
	Power Output Distribution Ports	2	2	2	2
Battery Specifications	Battery Technology	Valve-regulated lead acid battery			
Communications	Options	(2) Intellislot™ Ports			
	Card Compatibility	IS-UNITY-DP, IS-UNITY-SNMP, IS-UNITY-LIFE, IS-485EXI, IS-RELAY			
	Protocols Available	MODBUS-IP, MODBUS-485, BACNET-IP, BACNET-MSTP, SNMP, HTTP, LIFE™ Services, Relay Contacts			
Environmental Sensors Options	Liebert® SN Series	Temperature, Humidity, Temperature/Humidity Combination, Contact Closure			
Physical Data UPS	Dimensions, W x D x H in (mm)*	23.6 39.3x78.7 (600x1000x2000)			
	Total Unit Weight lb (kg)	Standard Runtime: 1212 (550)	Standard Runtime: 1212 (550)	1521 (690)	1543 (700)
		Extended Run Time: 1455 (660)	Extended Run Time: 1455 (660)		
	Battery Weight lb (kg)	Standard: 527 (239) Extended: 762.6 (346)	Standard: 527 (239) Extended: 762.6 (346)	762.6 (346)	762.6 (346)
Environmental	Operating Temperature	32-104°F (0-400°C), 68°F to 77°F (20°C to 25°C) for optimum battery life			
	Relative Humidity	5% to 95% non-condensing			
	Operating Altitude	Sea level to 4,921 ft (1,500 m) without derating {Derate Output power by 1% per 328ft (100mm) up to 10,000 ft(3000m)}			
	Acoustical Noise	<55dB			
Agency/Certification/Conformance	cULus (UL 1778 5th Edition, CSA No.22.2 107.3. Meets current requirements for safe high performance UPS operation. ENERGY STAR qualified.				
Standard Warranty	1 year				

* Note: Power Distribution option adds 6.2 (157mm) to the cabinet depth (D)



Vertiv.com | Vertiv Headquarters, 505 N Cleveland Ave, Westerville, OH 43082, USA

© 2024 Vertiv Group Corp. All rights reserved. Vertiv™ and the Vertiv logo are trademarks or registered trademarks of Vertiv Group Corp. All other names and logos referred to are trade names, trademarks or registered trademarks of their respective owners. While every precaution has been taken to ensure accuracy and completeness here, Vertiv Group Corp. assumes no responsibility, and disclaims all liability, for damages resulting from use of this information or for any errors or omissions. Specifications, rebates and other promotional offers are subject to change at Vertiv's sole discretion upon notice.