

# INSTALLATION INSTRUCTIONS:

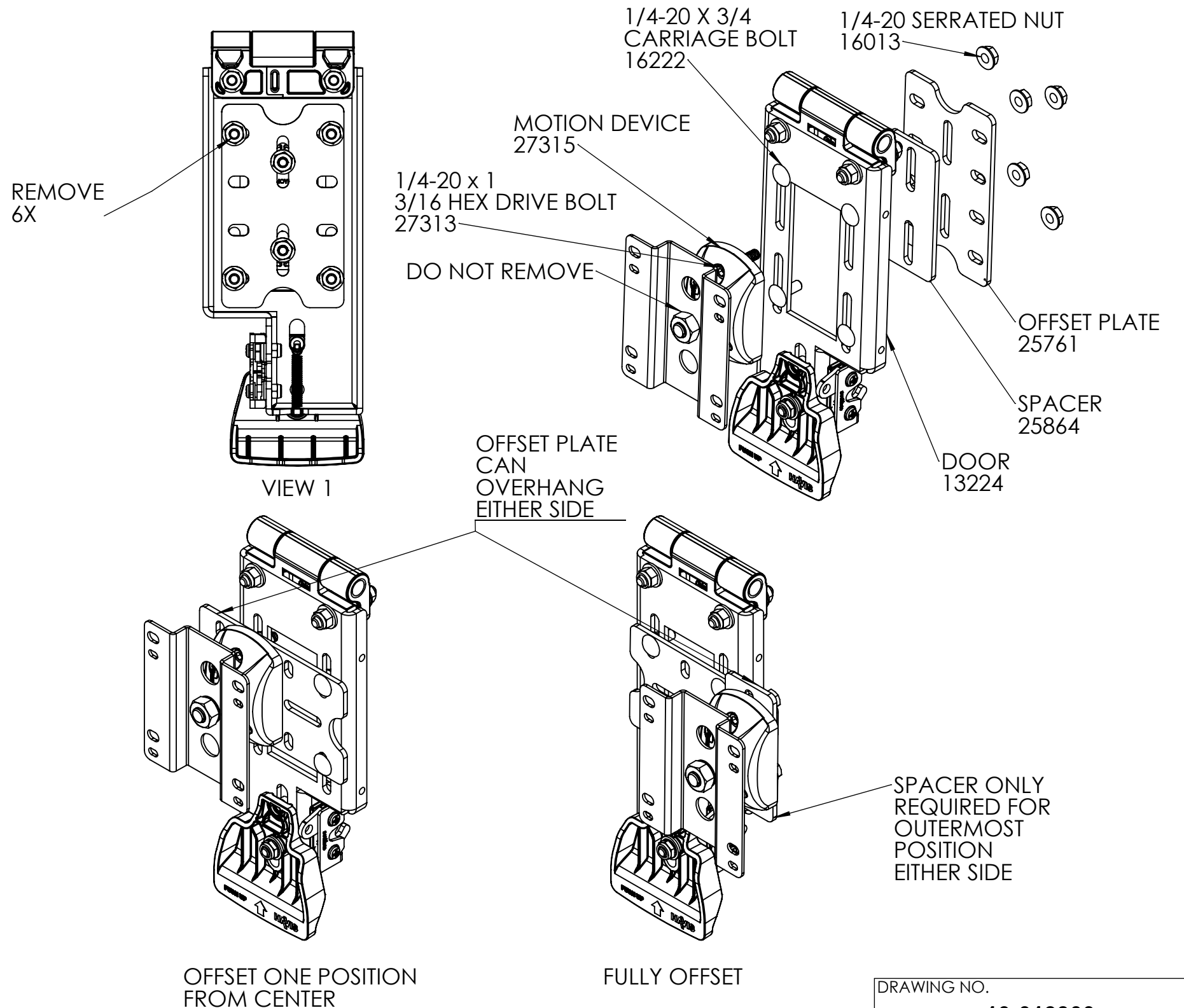
MOUNT SHIPS IN CENTER POSITION FOR USE IN MOST APPLICATIONS. IF NECESSARY, FOLLOW THE STEPS BELOW TO OFFSET THE MOUNT TO THE PASSENGER OR DRIVER SIDE.

## TO OFFSET MOUNT ONE POSITION FROM CENTER:


1. REMOVE SIX 16013 1/4-20 NUTS FROM BACK OF 13224 DOOR. RETAIN HARDWARE FOR REUSE.
2. POSITION THE 25761 OFFSET PLATE AGAINST THE FRONT OF THE 13224 DOOR. OVERHANG OFFSET PLATE TO THE DESIRED SIDE.
3. REMOUNT MOTION DEVICE, BOLTING THROUGH OFFSET PLATE AND LONG SLOTS OF THE DOOR. REUSE 1/4-20 CARRIAGE BOLTS AND NUTS TO SECURE THE OPPOSITE SIDE.
4. TIGHTEN ALL HARDWARE. INSTALLATION COMPLETE

## TO OFFSET MOUNT FULLY TO ONE SIDE:

1. REMOVE SIX 16013 1/4-20 NUTS FROM BACK OF 13224 DOOR. RETAIN HARDWARE FOR REUSE.
2. POSITION THE 25761 OFFSET PLATE AGAINST THE FRONT OF THE DOOR. OVERHANG OFFSET PLATE TO THE DESIRED SIDE.
3. REUSING HARDWARE FROM STEP 1, REMOUNT OFFSET PLATE THROUGH LONG SLOTS OF THE DOOR.
4. MOUNT THE MOTION DEVICE IN THE OUTERMOST POSITION. BOLT THROUGH THE SPACER AND OFFSET PLATE USING HARDWARE FROM STEP 1.
5. TIGHTEN ALL HARDWARE. INSTALLATION COMPLETE.



**WARNING:** ALL HAVIS INC. PRODUCTS ARE DESIGNED WITH SAFETY OF USE AND INSTALLATION IN MIND. HOWEVER, IT IS THE SOLE RESPONSIBILITY OF THE OWNER/OPERATOR OF A VEHICLE USING HAVIS INC. MOUNTING AND DOCKING EQUIPMENT, TO INSURE THAT THE EQUIPMENT IS INSTALLED SO THAT IT WILL NOT INTERFERE WITH VEHICLE OPERATION, INTERFERE WITH SAFETY DEVICES, OBSTRUCT VIEW OF DRIVING CONDITIONS, OR IN ANY WAY DEGRADE OCCUPANT SAFETY. IMPROPER INSTALLATION CAN CAUSE SERIOUS INJURY IN THE EVENT OF AN ACCIDENT. INSTALLATION SHOULD ONLY BE PERFORMED BY QUALIFIED PROFESSIONALS. COMPUTERS AND MOTION DEVICES MUST BE MOVED TO AND STOWED/SECURED IN THEIR SAFE DRIVING POSITIONS BEFORE OPERATING VEHICLE.

DRAWING NO. <b>10-013300</b>	
PRODUCT DESCRIPTION <b>ASSY, DMM, SPHERICAL DOOR SUB</b>	
 1-800-524-9900 WWW.HAVIS.COM	WEIGHT: (LBS) <b>2.66</b>
	REV. DATE <b>XX-XX-XX</b>