



newline

CONNECT. CREATE. COLLABORATE.

Spring 2024



Process!



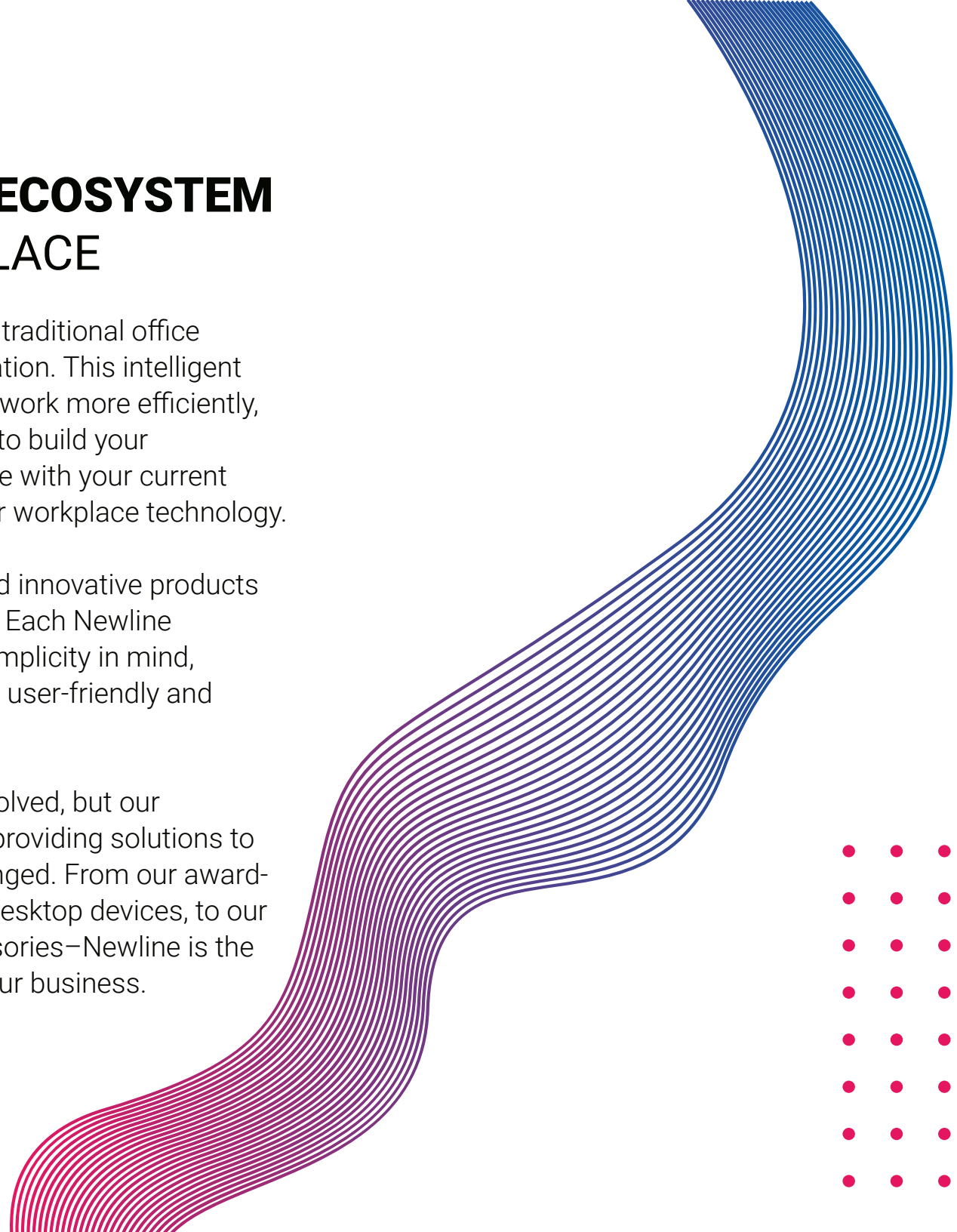


THE INTERACTIVE **ECOSYSTEM** FOR YOUR WORKPLACE

Newline bridges the gap between traditional office collaboration and virtual collaboration. This intelligent and flexible workspace helps you work more efficiently, faster and better. With the option to build your technology ecosystem or integrate with your current system—Newline streamlines your workplace technology.

We believe that truly impactful and innovative products should be easy for anyone to use. Each Newline product was purpose-built with simplicity in mind, making each interactive flat-panel user-friendly and completely non-proprietary.

The work landscape may have evolved, but our commitment to your success by providing solutions to your everyday needs has not changed. From our award-winning interactive displays and desktop devices, to our cutting-edge software and accessories—Newline is the premier technology partner for your business.





TRANSFORM YOUR WORKPLACE

Newline is a one-stop shop for business. Our all-in-one solutions and accessories give you all the innovative tools you need.

Newline focuses on creating products that help you work more efficiently. From our award-winning and easy-to-use interactive touch panels, to our innovative desktop solution and wide range of software, Newline has everything you need to bring in-person and remote work success into your business.

Easy for Anyone to Use

If a solution isn't easy to use, we won't bring it to the market. All of our products are designed with you in mind and it is the key to our success.

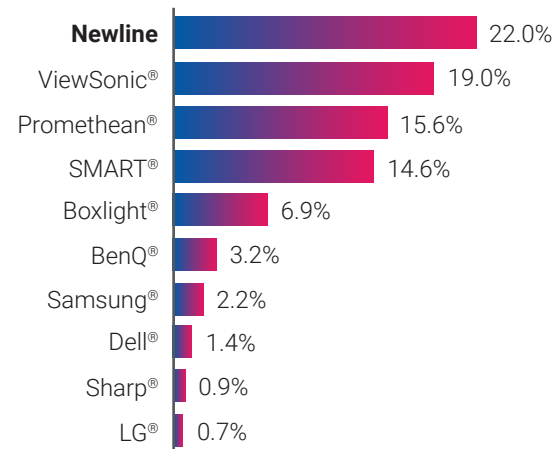
Completely Non-Proprietary

We work in your world. No matter what software or hardware you want to use, our solutions give you the freedom to collaborate how you choose.

Newline is Number 1!

Newline is the largest manufacturer of interactive displays in the United States. Our business model keeps us growing like none other.

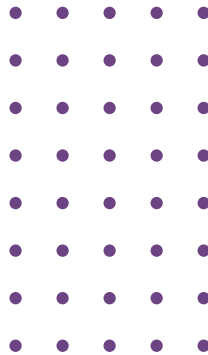
2023 Q3 USA Market Share



* Data provided by 2023 Futuresource Consulting Ltd



***"We Help Your Business
Make an Impact"***



We Own the Factory

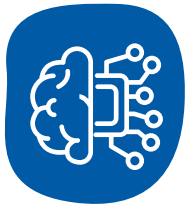
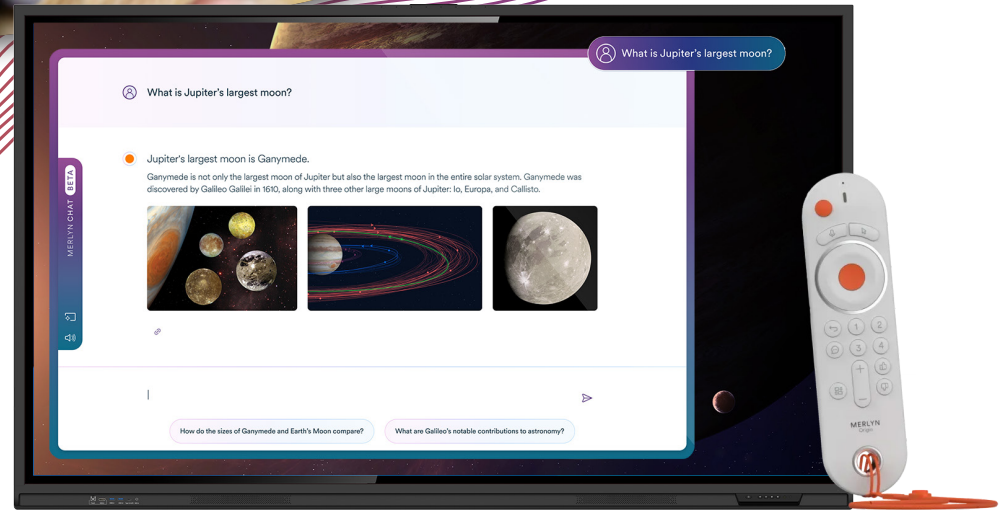
Newline has complete control over product improvements and how much is produced. We listen to our clients and their needs to make sure the products we provide help them succeed.



Well-Stocked Local Warehouses

With warehouses in strategic places across the country, Newline gets displays to their destination faster than ever with same and next day shipping. You'll never have to worry about if Newline can fill an order.

Newline + Merlyn AI



Leverage the Power of Generative AI

Leverage the power of Merlyn's generative AI during collaborative sessions and business meetings to deliver text and images that enhances engagement and provides intelligent content generation.



Control with Your Voice

Using the power of Merlyn AI and natural language voice commands, users can access all of the Newline features they know and love from anywhere in the room.



Safe, Secure and Private

Merlyn AI is built on the first LLM designed specifically for education, so you can be confident content is pulled from vetted educational content and resources, not off the internet.

NEW! With the power of Merlyn AI, Newline's interactive panels are easier to use than ever! The Newline Q and Q Pro Series interactive panels with Merlyn AI allows users to control their panels with only their voice and leverage the power of generative AI to deliver text and images to the panel as if by magic.



Leverage the Power of Generative AI



Integrated with the Q Pro & Q Series



Control With Your Voice



LLM Sourced from Vetted Content



Private, Safe & Secure



Highly Versatile AI assistant

Product Part Numbers

55" Q Pro Bundle - TT-5524QP-A11
65" Q Pro Bundle - TT-6524QP-A11
75" Q Pro Bundle - TT-7524QP-A11

86" Q Pro Bundle - TT-8624QP-A11
98" Q Pro Bundle - TT-9824QP-A11

1 year subscription - MER-AI-1
3 year subscription - MER-AI-3
5 year subscription - MER-AI-5

Q Pro Series



NEW! Increase productivity and collaboration across the board with the Newline Q Pro Series, a high-performance interactive display solution with native Google EDLA Certification. Seamless integration with Google Apps enhances instruction by providing easy access to Google Classroom, Google Drive, and other Google applications.



Google EDLA Certified



USB Type-C with 65W Power



Android 13 OS with User Profiles



Camera Module Capable



Better Connectivity with Wi-Fi 6



Embedded 20W Speakers



Up to 40 Points of Touch



Compatible with All Devices

Product Part Numbers

55" - TT-5524QPRO 65" - TT-6524QPRO 75" - TT-7524QPRO
86" - TT-8624QPRO 98" - TT-9824QPRO

Certified Google Integration

Google EDLA certification ensures compatibility and optimal performance with Google applications and services.



Powerful Android 13 OS

Powered by the latest and most advanced Android 13 operating system, the Q Pro Series is highly customizable, allowing for tailored user profiles.

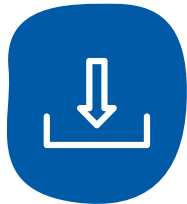
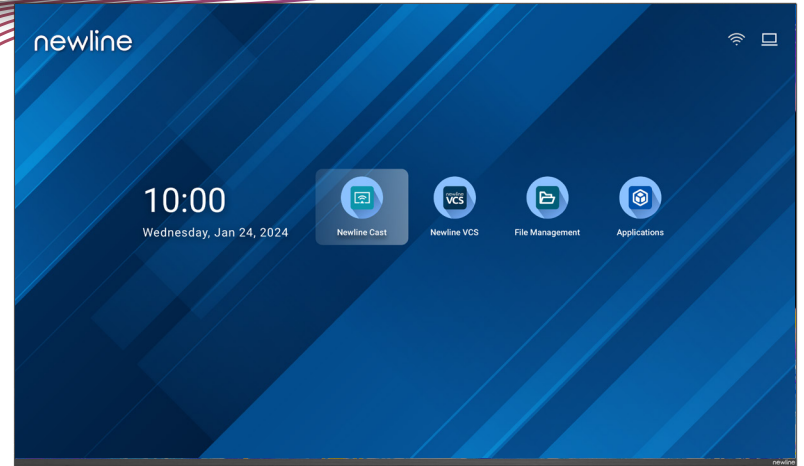


Up to 40 Points of Touch

The Q Pro supports up to 40 points of touch and Object Recognition that can differentiate between fingers, pens and palms to react as a marker, thin pen or eraser.

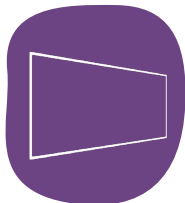


STV Series



Preloaded Apps

With a suite of preloaded apps, including popular productivity tools, the STV ensures that you have instant access to a world of information.



1mm Ultra-thin Bezel

The STV Series boasts an exceptionally slim bezel of up to 1mm, breaks free from conventional television boundaries, surpassing the screen-to-body ratio of the ordinary display.



Digital Signage Compatible

Digital Signage Compatibility with Newline VCS turns the STV into an effective communication tool.

NEW! Introducing the STV Series, Newline's first Pro Series TV. With 4K HD resolution, a 1mm ultra-thin bezel, and High Dynamic Range users enter an immersive audiovisual experience. Collaboration with wireless casting connectivity allows users to share their ideas with Windows, Mac, Android, and iPhone in the classroom, huddle room, and conference room with simplicity.



Newline's First Pro Series TV



Ultra Bright Display



4K UHD Resolution



Ultra Thin Bezel



Preloaded Apps



Digital Signage Compatible



Best in Class Warranty



Available in sizes 43\"/>

Product Part Numbers

43\" - STV-4324
55\" - STV-5524

65\" - STV-6524
75\" - STV-7524

85\" - STV-8524
98\" - STV-9824

C Series



NEW! Introducing the Newline C Series, a versatile and cost-effective interactive display is designed to be user-friendly and adaptable, making it a perfect tool for engagement and collaboration. The C Series seamlessly integrates with your pre-existing technology, including your favorite hardware and software, maintaining the quality, reliability, and flexibility you've come to expect from Newline.



No On-board OS



Ultra Bright Display



4K UHD Resolution



Up to 40 Points of Touch



OPS Capable



Plug & Play Design



Variety of Connections



Compatible with all Devices

Product Part Numbers

65" - TT-6523C

75" - TT-7523C

86" - TT-8623C



No On-Board OS

With no on-board operating system, you can interact in your favorite software ecosystem and never worry about management or security settings.



OPS Compatible

All C Series interactive touch panels come with an easy to access OPS port. Add a powerful on-board computer module to bring the power of a desktop right to your display.



Compatible with all Devices

Seamlessly connect with all your devices effortlessly, the C Series is designed to be compatible with a wide range of devices.



Z Series



Built-in Mic Array

An integrated 8-microphone array with automatic gain control and echo canceling technology ensures a crisp clear voice transmission from anywhere in the room.



Modular Camera

The UC Ready Z Series comes with a flexible 4K modular, wide-angle camera with a 120° FOV can be tilted upward and downward within 15° to the angle that works for conference rooms of all sizes.



Eco-Friendly Proximity Sensor

Equipped with a Proximity Sensor, the display will sleep/reawaken automatically based on human presence in the room.

Redefine collaboration with the Newline Z Series, an ultra-high definition display that provides an immersive audio-visual experience for your meeting rooms and huddle spaces. The UC Ready Z Series comes with an onboard computer (OPS) and a flexible 4K wide-angle camera. Don't need an OPS or camera? Choose the non-UC Z Series and save.



USB Type-C
With Power



Secure
Android 11 OS



Tilttable 4K Wide-
Angle Camera



Superior Capacitive
Touch (PCAP)



Compatible with
all Devices



Antimicrobial
Surface



Built-in Mic
Array



Eco-friendly
Proximity Sensor



Better
Connectivity

Product Part Numbers

55" - TT-5522Z
TT-5522Z-UC

65" - TT-6522Z
TT-6522Z-UC

75" - TT-7522Z
TT-7522Z-UC

86" - TT-8622Z
TT-8622Z-UC

Q Series



Your team has varying levels of needs, so naturally your office hardware must be equipped to meet that demand. Connectivity that matches your personal devices, displays to rival even the best televisions, and integration that makes for a seamless transition. Leverage the power of the Q Series for today's complex collaboration landscape.



4K Ultra-High Definition



Embedded Android 11.0



WiFi 6 Module



Remote Management



Compatible with all Devices



Antimicrobial Coating



Custom User Profiles



Integrated Pen Tray



USB Type-C With Power

Product Part Numbers

55" - TT-5521Q 65" - TT-6521Q 75" - TT-7521Q 86" - TT-8621Q 98" - TT-9821Q

Modern Connectivity

Avoid adapter mishaps and incompatibility. The Q Series has the latest I/Os such as USB-C (with power) and WiFi 6.



Embedded Whiteboard

Make the best use of virtual/hybrid meetings with a feature-rich whiteboard. Import docs, images, and videos in one app.

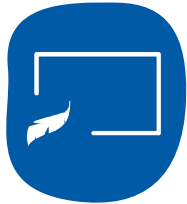


Newline App Store

Don't sacrifice the tools already in use. Download your project management, meeting, and news apps compatible with touch.



DV Series



Minimalist Design

The DV Series adopts a sleek bezel-less display area and lightweight design with a 19.8mm cabinet mounted to a 6mm ultra-thin frame.



Efficiency and Convenience

The All-in-One design integrates power supplies, speakers, and control systems to streamline installation, and reduce power consumption and maintenance efforts.



Stunning Visuals

Advanced 24-bit color processing technology, 3840 Hz ultra-high refresh rate, and image calibration ensures that the DV delivers an unparalleled visual performance.

New Product! The Newline DV Series is an intelligent All-in-One Direct View LED display that combines cutting-edge technology with seamless design. Whether used for boardrooms, presentations or digital signage, this large format Direct View LED display provides an immersive viewing experience that leaves a lasting impression.



6mm Thin Frame



Ultra High Refresh Rate



Integrated Speakers



Self-Adaptive Brightness



Plug & Play Design

Product Part Numbers

120" - DV-12023H

150" - DV-15023H

180" - DV-18023H

NT+ Series



As the next generation of 4K non-touch displays, the newly updated NT+ Series brings you everything you need for presentations, wireless casting, and sharing files and videos. Have everything you want on a bright, vivid display without paying for more features that you don't need. The NT+ Series streamlines how you communicate in the office by focusing on being a brilliant, easy to control TV.



USB Type-C Connection



Modular Wi-Fi with Casting



Remote Display Management



4K Image Quality



24/7 Commercial Grade LED

Product Part Numbers

55" - TT-5523NT-PLUS

65" - TT-6523NT-PLUS

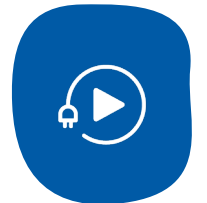
75" - TT-7523NT-PLUS

86" - TT-8623NT-PLUS

98" - TT-9823NT-PLUS

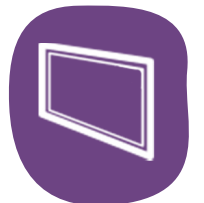
Better Connection

With Plug & Play USB Type-C, the entire setup process is streamlined to one cable and instant access.



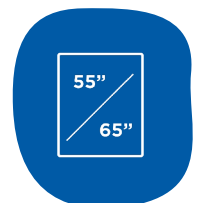
Sleek Bezel & Design

The newly redesigned NT+ Series offers a sleeker profile and slimmer bezel to elegantly blend in to your room's décor.

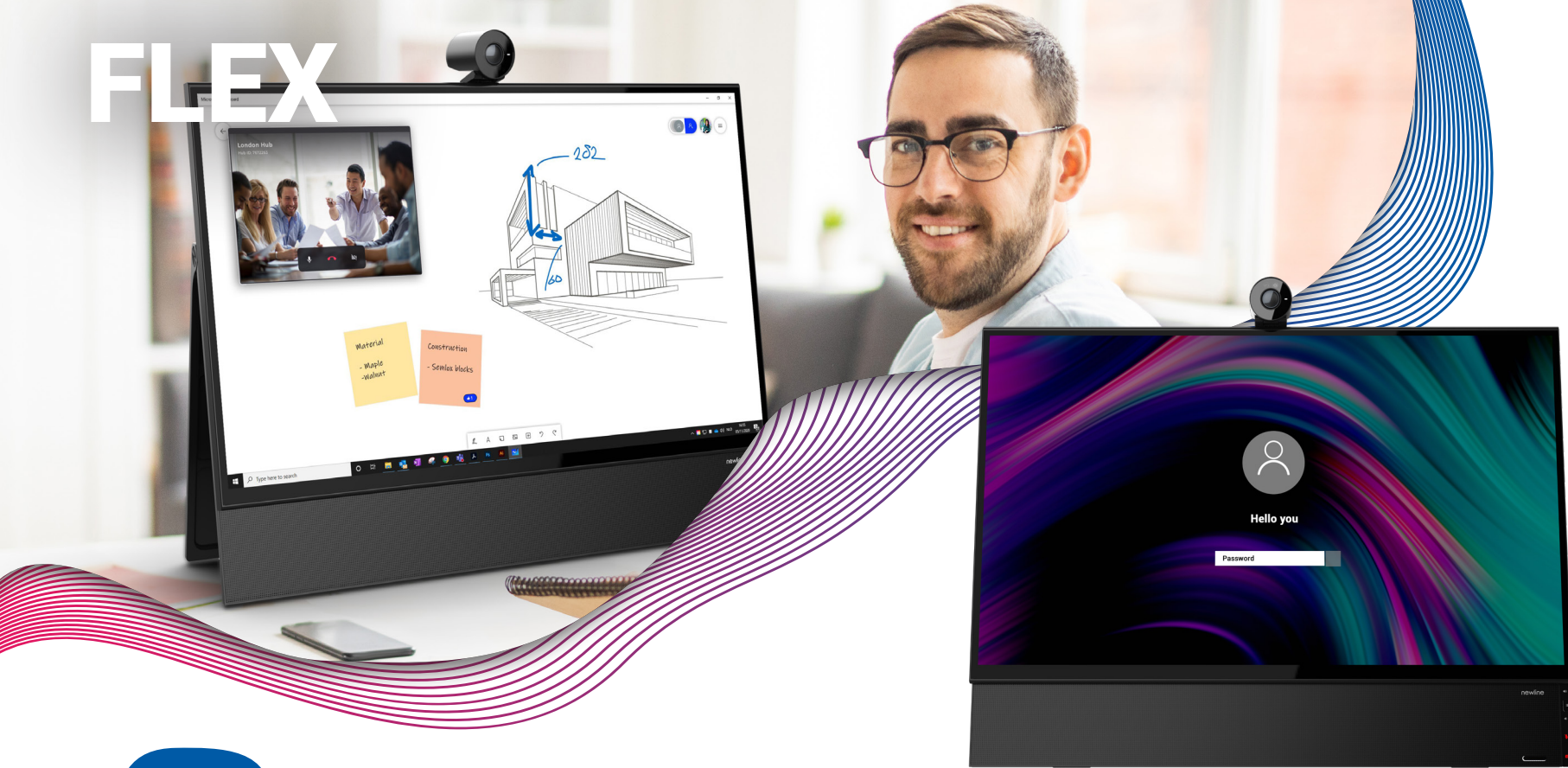


Portrait Mode

55" and 65" inch NT+ models can be mounted in portrait mode for use as digital signage.



FLEX



Plug & Play Design

Plug in your laptop with just one cable and activate touch functionality. No drivers to install* and connectivity is instant.



Tilt & Turn 4K Camera

Show up to video meetings with confidence and communicate with less strain. With a versatile 4K camera, remote communication improves.



Capacitive Touch

What is a touch screen device without superior interactivity? Second nature writing and responsive touch relieves you from the mouse!

*Touch drivers must be installed for Apple products.

Seemingly overnight physical paperwork and in-person meetings became antiquated workplace concepts. Navigate the new workplace environment with ease. The Newline Flex helps you attend meetings, review documents, and collaborate from one device, in office or remote. Don't put your laptop away just yet—with easy connectivity, you can ditch the charging cable.

27"

27" All-in-One Appliance



Powered USB Type-C w/ 60W



8 Mic Array & Echo Cancellation



Active Pen w/ Palm Rejection



2.1 Channel Speakers

Product Part Numbers

FLEX

CAMERAS & MICROPHONES

Connect Your Team to the World

Complete your Newline ecosystem with the perfect camera and mic set. An easy-to-install camera instantly prepares you for your important video meetings, virtual presentations, or hybrid meetings. Save yourself from countless hours of research on “the best camera.” The best options for your Newline display are right here! Discover the perfect fit for your team.



MODULAR MIC ARRAY

- ✓ Connect via bluetooth & USB
- ✓ Noise Reduction
- ✓ Echo cancellation
- ✓ 360° bluetooth microphone - place anywhere in the room
- ✓ Ultra Portable Compact Design
- ✓ Plug & Play Design



Bluetooth/USB Connection



360° Microphone



DOCUMENT CAMERA

- ✓ 4K camera
- ✓ Auto-Focus Lens
- ✓ Connect via USB Type-C
- ✓ Flexible multi-jointed design
- ✓ Adjustable LED Light
- ✓ Works with all Newline displays



4K Camera



Flexible Shooting Area



4K MODCAM+

- ✓ 4K camera
- ✓ Built-In ANR/AGC Mic
- ✓ Built-In AI Auto Framing
- ✓ Connect via USB
- ✓ Control by Remote
- ✓ Works with Q & Z Series displays



4K Camera



Plug & Play Design

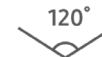


TANGO

- ✓ 1080p HD camera
- ✓ Integrated microphone
- ✓ Connect via USB
- ✓ 120° camera field-of-view
- ✓ Digital noise reduction
- ✓ Works with all Newline displays



1080p Camera



120° Field of View



MEET CAM

- ✓ 4K camera
- ✓ Auto framing
- ✓ 120° camera field-of-view
- ✓ Connect via bluetooth & USB
- ✓ 360° bluetooth microphone - place anywhere in the room
- ✓ Echo cancellation



4K Camera



360° Microphone



ON-BOARD COMPUTERS

Plug & Play Computers for Your Display

Upgrade your operating system with a dedicated on-board computer. Bypass connecting or casting a laptop with the integrated OPS. Fill your display's OPS slot with an on-board computer that brings you all the power of a desktop computer right to your display. As your organization continues to grow and demands more power, the OPS is easily swappable for a more powerful version.

NEW! Google EDLA Certified OPS Android Computer



Part Number	RK3588
CPU	Quad-core Cortex-A55
GPU	Mali-G52-2EE
Storage	64GB eMMC
RAM	8GB
Built-in WiFi	WiFi 6 2.4GHz + 5GHz
Bluetooth	Bluetooth 5.2
OS	Android 12
Ports	(1) USB 2.0, (1) USB 2.0 (OTG), (2) USB 3.0; (1) RJ45 Gigabit; (1) MIC-IN; (1) Micro SD

Intel-Powered OPS



	Good 4K	Better 4K	Best 4K
Part Number	EPR8A65800-000	EPR8A64000-000	EPR8A67160-000
CPU	i5 11th Gen	i7 11th Gen	i7 11th Gen
GPU	Intel UHD Graphics	Intel UHD Graphics	Intel UHD Graphics
RAM	8GB DDR4	8GB DDR4	16GB DDR4
Hard Disk	128GB SSD	256GB SSD	256GB SSD
Built-in WiFi & Bluetooth	Wi-Fi 6 + BT 5.0	Wi-Fi 6 + BT 5.0	Wi-Fi 6 + BT 5.0
OS	Win 11 Pro (Win 10 Optional)	Win 11 Pro (Win 10 Optional)	Win 11 Pro (Win 10 Optional)
RAM Upgrades	Up to 32GB	Up to 32GB	Up to 32GB
Storage Upgrades	Up to 1TB SSD	Up to 1TB SSD	Up to 1TB SSD

ACCESSORIES

Solutions for your Interactive Display

Support your various workspaces with reliable products that are compatible with Newline displays.

Mount your panel to a wall or choose a more mobile mounting solution.

newline

Wall Mount

- ✓ Keep your display sturdy on the wall with the standard Newline wall mount.
- ✓ The light, compact design makes it easy to install while providing strength and durability.



SKU: EPR8A50600-000

*Fits 55" - 80" Panels

*Fits 80" - 98" Panels

SKU: EPR8A50980-000

newline

Mobile Stand

- ✓ Adjust the height of your display so that your students can touch and interact directly with the screen.



*Fits all Panel Sizes

SKU: EPR8A50500-SQR*

newline

TRULIFT Mobile Stand

- ✓ Motorized stands let you adjust your display height with a remote or electronic option, giving you easy visibility.



*Fits all Panel Sizes

SKU: EPR8A60060-000*

Newline partners with a variety of different mobile stand and wall mount providers to help you find the best fit for your needs.

BalanceBox®

Wall Mount

SKU: EPR8A88700-000

*Fits 55" - 80" Panels

SKU: EPR8A88900-000

*Fits 80" - 98" Panels

MOORECO

iTeach Stand

SKU: EPR8A70080-000*

*Fits all Panel Sizes

MOORECO

iTeach Motorized Stand

SKU: EPR8A70070-000*

*Fits all Panel Sizes

BalanceBox®

Mobile Stand

SKU: EPR8A88555-000*

SKU: EPR8A88666-000†

SOFTWARE SOLUTIONS

Software to Transform Workspace

Newline's dedication to providing the complete solution to the workplace needs does not stop with the hardware. Our software solutions round out the ecosystem with tools that provide superior synchronous and asynchronous communication support.

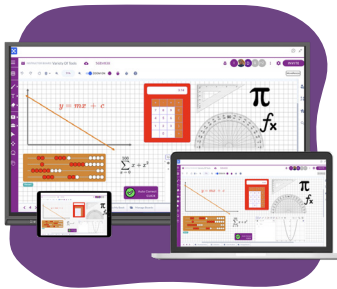
Always evolving and always updating, many of these solutions are pre-installed on the Newline flat panels.

Talk with your Newlines Sale Manager to determine the best software package for your organization's needs.

All Newline Software Solutions are compatible with:



ENGAGE CLOUD



Cloud-Based Whiteboarding

- ✓ Online, cloud-based interactive whiteboard for remote, hybrid and in-person collaboration.
- ✓ Real-time collaboration allows users to interact on a single whiteboard while easily sharing content such as PDFs, photos, audio and video.
- ✓ Device agnostic, Newline Engage Cloud works on Newline panels as well as tablets, Chromebooks, mobile phones, and more.



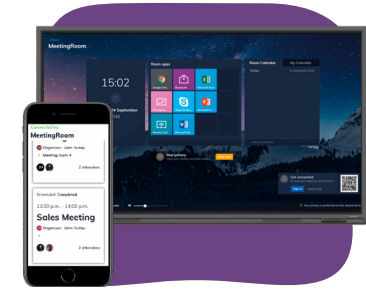
VISUAL COMMUNICATION SOLUTION



Digital Signage

- ✓ Newline Visual Communication Solutions powered by TSN is a digital broadcast network designed to provide unified visual communications in businesses.
- ✓ Broadcast important and engaging messages to employees and the community directly through a Newline panel without the need for a separate media player.
- ✓ Leverage your Newline display for all your digital signage and visual communication needs.

LAUNCH CONTROL



All-In-One Meeting Solution

- ✓ Walk up and start your meetings with a one-touch solution that keeps your computer and network secure.
- ✓ Easily access approved apps, view the room's calendar, and start a videoconferencing call - all with one button!

Launch Control supports:



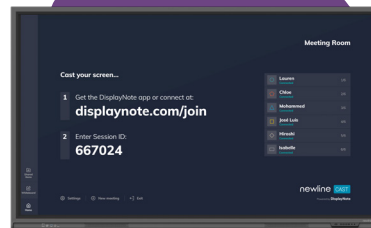
DISPLAY MANAGEMENT PLUS



Remote Management

- ✓ Centrally manage your Newline interactive displays from any location through a secure and dedicated web portal.
- ✓ Easily manage and deploy apps and configure Newline display settings.
- ✓ Use the digital signage features or broadcast messages to all displays.

CAST



Wireless Screen Sharing

- ✓ Easily share your screen from any device.
- ✓ Newline Cast is simple to use, with one click you can present wirelessly from any network.
- ✓ Control and annotate from the Newline display or from your own device all with the freedom to walk around the room.
- ✓ Present up to 4 screens simultaneously.

BROADCAST



Content Sharing

- ✓ Tap one button and share your display screen with team members who may not be able to see the display clearly.
- ✓ They can follow along on their own personal screen, reducing eyestrain and making sure everyone gets the most out of the meeting and presentation.



OUR SERVICE GUARANTEE

Newline's commitment to quality service and your organization's success extends past the initial purchase. We provide lifetime service, free training, and world-class technical support as well as a best-in-class warranty.



On Demand Technical Support

Newline provides continuous U.S. based technical phone support, email support through our Helpdesk Ticket System, and remote desktop support. You will always have access to answers at our online support knowledgebase. Proactively find answers, any time, with our completely comprehensive self-help system.



Training Geared Towards Ease of Use

Protect your investment through training and ensure staff are comfortable with the technology. Newline provides free, quality instructional training opportunities for all staff. The easier our display is for your team to use effectively, the more you can succeed.



Advanced Replacement Warranty

Newline has one of the best warranty programs in the industry. Not only do we provide 3-years of coverage, but it is an all inclusive advanced replacement warranty. That way your progress and productivity is not affected by technology defects.



Virtual & In-Person Demo Scheduling

Our training team works with your schedule and limitations. If you require someone to be onsite or virtual, our team makes it work! Simply select an available time on the online scheduler.

OUR PARTNERSHIPS

Newline is committed to providing the best user experience possible, which includes partnering with the best technology companies. We are proud to sell innovative products that incorporate their expertise to make interactivity easier than ever!



A Partnership for Education

Newline is proud to be named a Google for Education Partner, leveraging the Newline Engage Cloud software with Google Cloud to deliver collaboration solutions for businesses and schools.



Powerful On-Board Computers

Our OPS On-Board Computers come with powerful Intel processors, providing customers with an all-in-one computing solution.



A Bundle for the Virtual World

Microsoft Windows Whiteboard leverages the power of touch to bring lessons and whiteboarding sessions to life.





Logitech provides camera and microphone options that easily integrate with all of Newline's touch solutions



Newline and Crestron have teamed up to bring you the complete solution for your interactive display.



Clickshare is an agnostic meeting solution for starting video calls from your laptop, working with all UC clients, and instantly connects to RS+ Series panels.



Adjust your Newline display with BalanceBox's options for wall mounts and mobile stands, some even motorized.



The versatile, configurable and durable Anywhere Cart mobile stands provide high quality classroom solutions.



Enhance your Newline interactive touch display with a versatile Mooreco mobile cart solution to provide you mobility.



Provide financing solutions to your Newline customers through TEQlease, giving additional purchasing options.



FlatFrog's InGlass Technology powers several of Newline displays for a seamless and natural writing experience.



Keep your Newline displays safe with Jelco's padded display covers. Jelco is an established market leader and develops a wide variety of industry first products.



Free your Newline display from the wall by putting it on one of Conen's several mobile stand options.



Legrand | AV offers audiovisual products including flat panel mounting solutions, projector mounts and more to Commercial AV markets.



Peerless-AV provides industry leading fixed mount and mobile stand solutions designed to improve your Newline experience.



T1V provides a hardware wireless casting solution, along with other multi-touch applications that work with Newline displays.



FROM OUR CUSTOMERS



John O'Hara
Director of Technology
National Flight Academy

"The 28 Newline touchscreens have been instrumental in setting the immersive tone at the National Flight Academy. Our students depend on these touchscreens as they plan, brief and coordinate each of their missions. The National Flight Academy has been extremely pleased with their performance."



Tom Eifler, Jr.
President
Eifler Advisory Group

"With the whiteboard feature, to be able to actually talk about ideas and concepts, I feel like people are very visual, so if you can draw it out and show it to them, it really settles in and helps them understand."



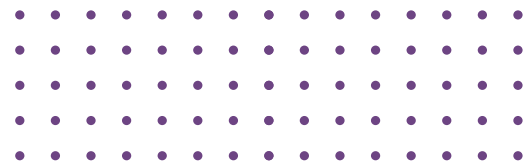
Eric Matthews
Director of Information Technology
City of Allen

"Newline panels provide a consistent, high-quality conference room and video conference experience for our employees that is simple to use."



Jay Arbetter
Senior Vice President
UBS Financial

"Newline has significantly improved communication with our clients. The more clear our communication, the stronger relationships we build to grow our business."





A FEW OF THE GREAT COMPANIES
WE WORK WITH:



OUR AWARDS

Each year, Newline shatters it's goals and gets recognized for it. Trust a brand that consistently receives accolades from industry experts on innovatie design, relevant product features, and company growth.



Entrepreneur of the Year Finalists



Infocomm 2015 Hot 50 Product



CBS Eye on Technology Appearance

2015



Best New Interactive Flat Panel - ISE



Infocomm 2016 Best in Show



Entrepreneur of the Year Finalists



Best Office Technology Product Finalist



#1 Fast Tech Company



AV Awards 2016 Finalist

2016



Infocomm 2017 Best in Show



Entrepreneur of the Year Finalists



AV Awards 2017 Finalist



Top 5 Fast Tech Companies



#10 of the Dallas 100



Ranked #149 in 2017 Inc. 500

2017



AV Awards 2018 Finalist



Top 5 Fast Tech Companies



Ranked #293 in 2018 Inc. 500



#6 of the Dallas 100



Ranked #81 of the Deloitte Fast 500

2018



Stability

With a steady financial revenue growth, you don't have to worry that the company you're working with will go out of business anytime soon. They'll be able to continue honoring warranties and providing you service for years to come.



Security

A proven track record of success means you don't have to worry about receiving anything less than the best. An Inc. 500 ranked company will make sure you are taken care of and satisfied.

2019



TCEA 2019 Best of Show



Intel IoT Solutions Alliance Partner of the Year



Entrepreneur of the Year Finalists



EdTech Cool Tool Awards Finalist



#377 Growjo Fastest Growing TX Companies



Ranked #406 in 2019 Inc. 500



Ranked #114 of the Deloitte Fast 500

2020



Ranked #1088 in 2020 Inc. 5000



Ranked #18 in the Dallas Middle Market 50



Ranked #266 of the Deloitte Fast 500



#15 of the Dallas 100



AV Awards 2020 Finalist

2021



iF Design Award 2021



EdTech Cool Tool Awards Finalist



reddot design award

Red Dot Award Product Design 2021



Ranked #1963 in 2021 Inc. 5000



Best Innovation for the Post-COVID Workspace



Ranked #480 of the Deloitte Fast 500



#18 of the Dallas 100

2022



EdTech Cool Tool Awards Finalist



Ranked #1577 in 2022 Inc. 5000



Secondary Education Winner - Q Series



#6 of the Dallas 100



Tech Titans Fast Tech Company

2023



Entrepreneur of the Year Southwest Finalists



Entrepreneur of the Year Southwest Winners



Entrepreneur of the Year National Finalists



#11 of the Dallas 100



Ranked #12 in the Dallas Middle Market 50



Ranked #2312 in 2021 Inc. 5000



Ranked #489 of the Deloitte Fast 500



newline

CONNECT. CREATE. **COLLABORATE.**

950 W Bethany Drive

Suite 330

Allen, TX 75013

sales@newline-interactive.com

www.newline-interactive.com