

Acclaim Pro Series

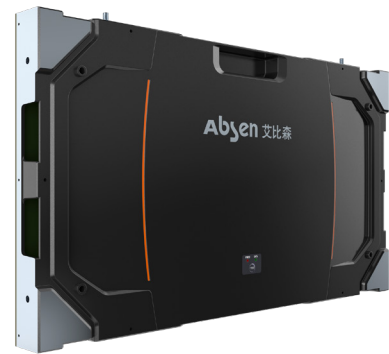
- Pixel pitch range of 1.27/1.58mm
- Corporate, mall, chain store, transportation hub, etc
- Native 16:9, 27.5". Pixel to pixel 4K/FHD resolution
- 4 in 1 integrated packaging
- Front maintenance of module, PSU, etc



| Parameters | A2712 Pro | A2715 Pro |
|--------------------------|---------------------------------|---------------|
| Pixel pitch (mm) | 1.27 | 1.58 |
| LED type | Black SMD1515 | Black SMD2121 |
| Brightness (nit) | 600 | 600 |
| Panel dimensions (WxHxD) | 610x343x49mm(24.02x13.50x1.93") | |

Acclaim Plus Series

- Pixel pitch range of 1.27mm – 2.54mm
- Corporate, mall, chain store, transportation hub, etc
- Native 16:9, 27.5". Pixel to pixel 4K/HD resolution
- A5C+ calibration technology for better display uniformity
- Front maintenance of module, PSU, etc



| Parameters | A2712 Plus | A2715 Plus | A2719 Plus | A2725 Plus |
|--------------------------|---------------------------------|----------------|----------------|----------------|
| Pixel pitch (mm) | 1.27 | 1.58 | 1.90 | 2.54 |
| LED type | Black SMD 1010 | Black SMD 1010 | Black SMD 1515 | Black SMD 2121 |
| Brightness (nit) | 600 | 600 | 800 | 1000 |
| Panel dimensions (WxHxD) | 610x343x49mm(24.02x13.50x1.93") | | | |

NX Series

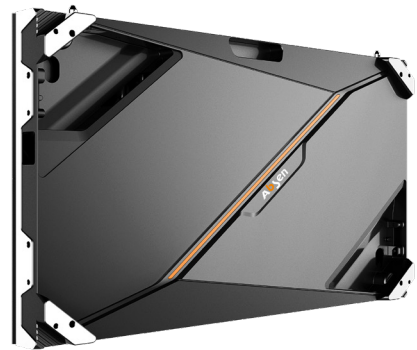
- Pixel pitch range of 1.5mm – 3.75mm
- Corporate, mall, chain store, transportation hub, etc
- Native 16:9, 27.5". Superior 4K/8K visual experience
- 16bits high grayscale and fine image
- Front/rear maintenance of module, PSU, receiving card, etc



| Parameters | NX1.5 | NX1.8 Normal | NX1.8 High brightness | NX2.5 Normal | NX2.5 High brightness | NX3.7 Normal | NX3.7 High brightness |
|--------------------------|---|------------------------|---------------------------------|------------------------|---------------------------------|------------------------|---------------------------------|
| Pixel pitch (mm) | 1.5 | 1.87 | 1.87 | 2.5 | 2.5 | 3.75 | 3.75 |
| LED type | SMD1212 | SMD1515 | SMD1515 | SMD1515 | SMD1515 | SMD1515 | SMD1515 |
| Brightness (nit) | 800 | 800 | 1500 | 800 | 1500 | 800 | 1500 |
| Panel dimensions (WxHxD) | 960x540x43.5mm(37.80x21.26x1.71")/ 240x540x43.5mm(9.45x21.26x1.71") | | | | | | |

KL II Series

- Pixel pitch range of 1.25mm – 2.5mm
- Corporate, mall, education, transportation hub, etc
- n^2 panels can be spliced into 2K, 4K or 8K 16:9 screen
- HFR+ mode for capturing the best moments
- Front maintenance of module, receiving card, etc



| Parameters | KL1.2 II | KL1.5 II | KL1.8 II | KL2.5 II |
|--------------------------|---------------------------------|-----------------|-----------------|-----------------|
| Pixel pitch (mm) | 1.25 | 1.53 | 1.86 | 2.5 |
| LED type | Black SMD1010 | Black SMD1212 | Black SMD1515 | Black SMD1515 |
| Brightness (nit) | 800 | 800 | 800 | 600 |
| Panel dimensions (WxHxD) | 640x360x65mm(25.20x14.17x2.56") | | | |