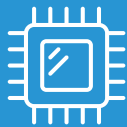




# I-Series 3 with Intel®

All-in-One Interactive Display



**Intel 12th Gen  
Processors**



**IPS PCAP  
Touchscreen**



**Fanless, IP54  
Rated Design**

## Product Overview

Elo's I-Series delivers reliable, enterprise-grade security and performance powered by Intel 12th gen processors including Celeron, Core i3, i5 and i7. Designed with a sleek and durable fixed tablet form factor, the I-Series offer models that support Windows, ChromeOS Flex and Linux (SuSE, Ubuntu and Red Hat). Available in sizes ranging from 15" to 24" with square and wide aspect ratios, with and without stands, the I-Series offers a modular platform with versatility to fit almost any application - from point-of-sale and interactive signage to self-service and automation controls.

**Available in 15" and 17" square aspect and 15", 22" and 24" wide aspect sizes with sleek edge-to-edge glass PCAP (10 touch) touchscreen**

**Elo Edge Connect™ compatibility - payment devices, barcode scanners, cameras, RFID, fingerprint reader, status lights and more**

**Modular design offering with stand and without stand options for flexible mounting in portrait, landscape and table-top orientation**

15-inch (4:3) I-Series 3 with Intel (With Stand)

Model	i2 Models		i3 Models	i5 Models	i7 Models
Enclosure Color	Black				
Display	15.0" / 381 mm diagonal, active matrix TFT LED LCD				
Aspect Ratio	4:3 (standard)				
Active Display Area (W x H)	11.97" x 8.98" / 304.1 mm x 228.1 mm				
Native (optimal) Resolution	1024 x 768 @ 60Hz				
Touch Technologies	10-touch TouchPro® PCAP				
Colors	262K				
Brightness (typical)	LCD panel: 400 nits; TouchPro PCAP: 340 nits				
Response Time Total (typical)	23 msec				
Viewing Angle (typical)	Horizontal: 80°/80° or 160° total / Vertical: 70°/80° or 150° total				
Contrast Ratio (typical)	800:1				
Processor	Intel Celeron Processor 7305L (8M Smart Cache, up to 1.10 GHz)	Intel Core i3-1215UL Processor (10M Smart Cache, up to 4.40 GHz by Intel Turbo Boost Technology 2.0)	Intel Core i5-1245UL Processor (12M Smart Cache, up to 4.40 GHz by Intel Turbo Boost Technology 2.0) with Intel vPro™ Support	Intel Core i7-1265UL Processor (12M Smart Cache, up to 4.80 GHz by Intel Turbo Boost Technology 2.0) with Intel vPro™ Support	
Graphics	Intel UHD Graphics		Intel Iris Xe Graphics eligible: to use the Intel Iris Xe Graphics, the system must be populated with 128-bit (dual channel) memory.		
BIOS	AMI				
Memory (RAM)	8GB 4800MHz DDR5 SO-DIMM on 1 of 2 slots				16GB 4800MHz DDR5 SO-DIMM on 1 of 2 slots
	(Expandable to 64GB maximum <sup>1</sup> on 2 slots) <sup>2</sup>				
	<sup>1</sup> Maximum memory using 2 slots. Expandable up to 64GB maximum, SO-DIMM DDR5-4800. <sup>2</sup> Check brand of the memory included in your unit before purchasing the memory kit.				
Storage	128GB M.2 PCIe (NVMe) SSD, 80 TBW, 256GB M.2 PCIe (NVMe) SSD, 160 TBW GB equals one billion bytes when referring to storage capacity. Accessible capacity may be less.				
Operating Systems	No Operating System, Microsoft Windows 10 IoT Enterprise LTSC 64-bit, Windows 11 Professional 64-bit				
I/O Ports	1x RJ45 LAN (Gigabit) Port, 4x USB 3.0 Ports, 4x Micro USB 2.0 Ports for Elo Edge Connect peripherals, 1x 24V Powered USB Port, 2x 12V Powered USB Ports, 1x RJ50 Powered Serial Port, 1x 12V/24V Cash Drawer Port (EPSON Pinout, 24V default; selectable by BIOS setting), 1x Full-function USB-C Port (Power up to 27W, USB 3.0, Display Port, Additional Video Out), 1x Audio Port (3.5 mm headset jack)				
Wireless Connectivity	802.11 a/b/g/n/ac/ax 2.4GHz, 5GHz and 6GHz, Bluetooth 5.3				
TPM	TPM 2.0				
RAID	Intel Volume Management Device (VMD) technology for select SKUs				
AMT	N/A			Intel Active Management Technology (AMT)	
Audio	2x 2W internal speakers				
Power	External 24VDC universal-type power supply brick, AC input voltage: 100-240 VAC, Input frequency: 50-60 Hz, Maximum output power: 180W				
Power Consumption	Without peripherals* - On Celeron: 34W, On i3: 49W, On i5: 50W, On i7: 50W, Sleep: < 5W, Off: < 0.5W *Condition for i5 & i7 models with 16GB DIMM/256GB SSD, others with 8GB DIMM/128GB SSD				
Dimensions	Unpackaged: 14.15" x 14.02" x 7.78" / 359.5 mm x 356.0 mm x 197.5 mm, Packaged: 19.6" x 19.2" x 13.6" / 497 mm x 487 mm x 345 mm				
Weight	Unpacked: 14.77 lbs / 6.7 kg, Packaged: 22.61 lbs / 10.26 kg				
Temperature	Operating: 0°C to 35°C / 32°F to 95°F, Storage: -20°C to 60°C / -4°F to 140°F Note: the thermal report pass airflow 0.5m/s condition. For No OS SKUs, recommend using the Elo optimize TDP tool for better performance.				
Humidity (non-condensing)	Operating: 20% to 80%; Storage: 5% to 95% (38.7°C max wet bulb temperature)				
Compliance	Energy Star 8.0 certified configurations available				
Regulatory approvals and declarations	Canada cUL, IC; United States UL, FCC; Germany TUV; Europe CE; Australia RCM; United Kingdom UKCA; International CB; Argentina S-Mark; Brazil ANATEL; Japan VCCI, MIC; China CCC, SRRC; Mexico NOM; RoHS CoC; New Zealand R-NZ; Singapore IMDA				
Mounting Options	75mm VESA mount				
Real-Time Clock	Replaceable CR2450 lithium metal battery for clock				
Warranty	3-year				
Extended Warranties	4 year: E819598; 5 year: E819795; 3 year + AUR: E820186; 4 year + AUR: E820388; 5 year + AUR: E820582				
MTBF	50,000 hours demonstrated				
Other Features	Serviceable internal components, Models with a stand for desktop application, Kensington lock				
What's in the box	I-Series with stand, North America Power Cord, European Power Cord, Power Adapter - 180W, Cable RJ-50 to DB-9, Quick Installation Guide (QIG), Cable tie, CFD mounting screw, VESA mounting screw, VESA cover and mounting screw, 75mm to 100mm adapter and mounting screw				

Ordering Information

Part Number	Processor	OS	Memory	Storage	Surface Treatment
E700385	7305L	No OS	8GB	128GB	Anti-glare
E700571	7305L	Window 10 2021 LTSC	8GB	128GB	Anti-glare
E700774	i3-1215UL	No OS	8GB	128GB	Anti-glare
E700960	i3-1215UL	Window 10 2021 LTSC	8GB	128GB	Anti-glare
E701155	i5-1245UL	No OS	8GB	128GB	Anti-glare
E701351	i5-1245UL	Window 10 2021 LTSC	8GB	128GB	Anti-glare
E613232	i5-1245UL	No OS	16GB	256GB	Anti-glare
E613436	i5-1245UL	Window 10 2021 LTSC	16GB	256GB	Anti-glare
E701555	i7-1265UL	No OS	16GB	256GB	Anti-glare
E701737	i7-1265UL	Window 10 2021 LTSC	16GB	256GB	Anti-glare



## 15-inch (16:9) I-Series 3 with Intel (With Stand)

Model	i2 Models		i3 Models	i5 Models	i7 Models
Enclosure Color	Black				
Display	15.6" / 396.24 mm diagonal, active matrix TFT LED LCD				
Aspect Ratio	16:9 (standard)				
Active Display Area (W x H)	13.55" x 7.62" / 344.2 mm x 193.5 mm				
Native (optimal) Resolution	1920 x 1080 @ 60Hz				
Touch Technologies	10-touch TouchPro® PCAP				
Colors	16.2M				
Brightness (typical)	LCD panel: 350 nits, TouchPro PCAP: 297.5 nits				
Response Time Total (typical)	25 msec				
Viewing Angle (typical)	Horizontal: 85°/85° or 170° total / Vertical: 85°/85° or 170° total				
Contrast Ratio (typical)	1000:1				
Processor	Intel Celeron Processor 7305L (8M Smart Cache, up to 1.10 GHz)	Intel Core i3-1215UL Processor (10M Smart Cache, up to 4.40 GHz by Intel Turbo Boost Technology 2.0)	Intel Core i5-1245UL Processor (12M Smart Cache, up to 4.40 GHz by Intel Turbo Boost Technology 2.0) with Intel vPro™ Support	Intel Core i7-1265UL Processor (12M Smart Cache, up to 4.80 GHz by Intel Turbo Boost Technology 2.0) with Intel vPro™ Support	
Graphics	Intel UHD Graphics		Intel Iris Xe Graphics eligible: to use the Intel Iris Xe Graphics, the system must be populated with 128-bit (dual channel) memory.		
BIOS	AMI				
Memory (RAM)	8GB 4800MHz DDR5 SO-DIMM on 1 of 2 slots				16GB 4800MHz DDR5 SO-DIMM on 1 of 2 slots
	(Expandable to 64GB maximum <sup>1</sup> on 2 slots) <sup>2</sup>				
	<sup>1</sup> Maximum memory using 2 slots. Expandable up to 64GB maximum, SO-DIMM DDR5-4800. <sup>2</sup> Check brand of the memory included in your unit before purchasing the memory kit.				
Storage	128GB M.2 PCIe (NVMe) SSD, 80 TBW, 256GB M.2 PCIe (NVMe) SSD, 160 TBW GB equals one billion bytes when referring to storage capacity. Accessible capacity may be less.				
Operating Systems	No Operating System, Microsoft Windows 10 IoT Enterprise LTSC 64-bit				
I/O Ports	1x RJ45 LAN (Gigabit) Port, 4x USB 3.0 Ports, 4x Micro USB 2.0 Ports for Elo Edge Connect peripherals, 1x 24V Powered USB Port, 2x 12V Powered USB Ports, 1x RJ50 Powered Serial Port, 1x 12V/24V Cash Drawer Port (EPSON Pinout, 24V default; selectable by BIOS setting), 1x Full-function USB-C Port (Power up to 27W, USB 3.0, Display Port, Additional Video Out), 1x Audio Port (3.5 mm headset jack)				
Wireless Connectivity	802.11 a/b/g/n/ac/ax 2.4GHz, 5GHz and 6GHz, Bluetooth 5.3				
TPM	TPM 2.0				
RAID	Intel Volume Management Device (VMD) technology for select SKUs				
AMT	N/A			Intel Active Management Technology (AMT)	
Audio	2x 2W internal speakers				
Power	External 24VDC universal-type power supply brick, AC input voltage: 100-240 VAC, Input frequency: 50-60 Hz, Maximum output power: 180W				
Power Consumption	Without peripherals* - On Celeron: 33W, On i3: 43W, On i5: 43W, On i7: 46W, Sleep: < 5W, Off: < 0.5W *Condition for i7 models with 16GB DIMM/256GB SSD, others with 8GB DIMM/128GB SSD				
Dimensions	Unpackaged: 15.12" x 13.32" x 7.78" / 384.1 mm x 338.4 mm x 197.5 mm, Packaged: 19.6" x 19.2" x 13.6" / 497 mm x 487 mm x 345 mm				
Weight	Unpacked: 14.08 lbs / 6.4 kg, Packaged: 22.6 lbs / 10.25 kg				
Temperature	Operating: 0°C to 35°C / 32°F to 95°F, Storage: -20°C to 60°C / -4°F to 140°F Note: the thermal report pass airflow 0.5m/s condition. For No OS SKUs, recommend using the Elo optimize TDP tool for better performance.				
Humidity (non-condensing)	Operating: 20% to 80%; Storage: 5% to 95% (38.7°C max wet bulb temperature)				
Compliance	Energy Star 8.0 certified configurations available				
Regulatory approvals and declarations	Canada cUL, IC; United States UL, FCC; Germany TUV; Europe CE; Australia RCM; United Kingdom UKCA; International CB; Argentina S-Mark; Brazil ANATEL; Japan VCCI, MIC; China CCC, SRRC; Mexico NOM; RoHS CoC; New Zealand R-NZ; Singapore IMDA				
Mounting Options	75mm VESA mount				
Real-Time Clock	Replaceable CR2450 lithium metal battery for clock				
Warranty	3-year				
Extended Warranties	4 year: E819598; 5 year: E819795; 3 year + AUR: E820186; 4 year + AUR: E820388; 5 year + AUR: E820582				
MTBF	50,000 hours demonstrated				
Other Features	Serviceable internal components, Models with a stand for desktop application, Kensington lock				
What's in the box	I-Series with stand, North America Power Cord, European Power Cord, Power Adapter - 180W, Cable RJ-50 to DB-9, Quick Installation Guide (QIG), Cable tie, CFD mounting screw, VESA mounting screw, VESA cover and mounting screw, 75mm to 100mm adapter and mounting screw				

## Ordering Information

Part Number	Processor	OS	Memory	Storage	Surface Treatment
E705229	7305L	No OS	8GB	128GB	Anti-glare
E705428	7305L	Window 10 2021 LTSC	8GB	128GB	Anti-glare
E705627	i3-1215UL	No OS	8GB	128GB	Anti-glare
E705831	i3-1215UL	Window 10 2021 LTSC	8GB	128GB	Anti-glare
E706031	i5-1245UL	No OS	8GB	128GB	Anti-glare
E706223	i5-1245UL	Window 10 2021 LTSC	8GB	128GB	Anti-glare
E743853	i5-1245UL	Window 10 2021 LTSC	16GB	256GB	Anti-glare
E940867	i5-1245UL	Window 10 2021 LTSC	16GB	512GB	Anti-glare
E706421	i7-1265UL	No OS	16GB	256GB	Anti-glare
E706613	i7-1265UL	Window 10 2021 LTSC	16GB	256GB	Anti-glare

## 15-inch (16:9) I-Series 3 with Intel (Without Stand)

Model	i2 Models		i3 Models	i5 Models	i7 Models
Enclosure Color	Black				
Display	15.6" / 396.24 mm diagonal, active matrix TFT LED LCD				
Aspect Ratio	16:9 (standard)				
Active Display Area (W x H)	13.55" x 7.62" / 344.2 mm x 193.5 mm				
Native (optimal) Resolution	1920 x 1080 @ 60Hz				
Touch Technologies	10-touch TouchPro® PCAP				
Colors	16.2M				
Brightness (typical)	LCD panel: 350 nits, TouchPro PCAP: 297.5 nits				
Response Time Total (typical)	25 msec				
Viewing Angle (typical)	Horizontal: 85°/85° or 170° total / Vertical: 85°/85° or 170° total				
Contrast Ratio (typical)	1000:1				
Processor	Intel Celeron Processor 7305L (8M Smart Cache, up to 1.10 GHz)	Intel Core i3-1215UL Processor (10M Smart Cache, up to 4.40 GHz by Intel Turbo Boost Technology 2.0)	Intel Core i5-1245UL Processor (12M Smart Cache, up to 4.40 GHz by Intel Turbo Boost Technology 2.0) with Intel vPro™ Support	Intel Core i7-1265UL Processor (12M Smart Cache, up to 4.80 GHz by Intel Turbo Boost Technology 2.0) with Intel vPro™ Support	
Graphics	Intel UHD Graphics		Intel Iris Xe Graphics eligible: to use the Intel Iris Xe Graphics, the system must be populated with 128-bit (dual channel) memory.		
BIOS	AMI				
Memory (RAM)	8GB 4800MHz DDR5 SO-DIMM on 1 of 2 slots			16GB 4800MHz DDR5 SO-DIMM on 1 of 2 slots	
	(Expandable to 64GB maximum¹ on 2 slots)? - ¹ Maximum memory using 2 slots. Expandable up to 64GB maximum, SO-DIMM DDR5-4800. ² Check brand of the memory included in your unit before purchasing the memory kit.				
Storage	128GB M.2 PCIe (NVMe) SSD, 80 TBW, 256GB M.2 PCIe (NVMe) SSD, 160 TBW GB equals one billion bytes when referring to storage capacity. Accessible capacity may be less.				
Operating Systems	No Operating System, Microsoft Windows 10 IoT Enterprise LTSC 64-bit, Windows 11 Professional 64-bit, ChromeOS Flex				
I/O Ports	1x RJ45 LAN (Gigabit) Port, 4x USB 3.0 Ports, 4x Micro USB 2.0 Ports for Elo Edge Connect peripherals, 1x RJ50 Powered Serial Port, 1x Full-function USB-C Port (Power up to 27W, USB 3.0, Display Port, Additional Video Out), 1x Audio Port (3.5 mm headset jack)				
Wireless Connectivity	802.11 a/b/g/n/ac/ax 2.4GHz, 5GHz and 6GHz, Bluetooth 5.3				
TPM	TPM 2.0				
RAID	Intel Volume Management Device (VMD) technology for select SKUs				
AMT	N/A			Intel Active Management Technology (AMT)	
Audio	2x 2W internal speakers				
Power	External 24VDC universal-type power supply brick, AC input voltage: 100-240 VAC, Input frequency: 50-60 Hz, Maximum output power: 180W				
Power Consumption	Without peripherals* - On Celeron: 33W, On i3: 43W, On i5: 43W, On i7: 46W, Sleep: < 5W, Off: < 0.5W *Condition for i7 models with 16GB DIMM/256GB SSD, others with 8GB DIMM/128GB SSD				
Dimensions	Unpackaged: 15.12" x 9.75" x 1.46" / 384.1 mm x 247.7 mm x 37.2 mm, Packaged: 18.9" x 7.8" x 13.6" / 481 mm x 197 mm x 345 mm				
Weight	Unpacked: 7.94 lbs / 3.6 kg, Packaged: 14.37 lbs / 6.52 kg				
Temperature	Operating: 0°C to 35°C / 32°F to 95°F, Storage: -20°C to 60°C / -4°F to 140°F Note: the thermal report pass airflow 0.5m/s condition. For No OS SKUs, recommend using the Elo optimize TDP tool for better performance.				
Humidity (non-condensing)	Operating: 20% to 80%; Storage: 5% to 95% (38.7°C max wet bulb temperature)				
Compliance	Energy Star 8.0 certified configurations available				
Regulatory approvals and declarations	Canada cUL, IC; United States UL, FCC; Germany TUV; Europe CE; Australia RCM; United Kingdom UKCA; International CB; Argentina S-Mark; Brazil ANATEL; Japan VCCI, MIC; China CCC, SRRC; Mexico NOM; RoHS CoC; New Zealand R-NZ; Singapore IMDA				
Mounting Options	75mm VESA mount				
Real-Time Clock	Replaceable CR2450 lithium metal battery for clock				
Warranty	3-year				
Extended Warranties	4 year: E819598; 5 year: E819795; 3 year + AUR: E820186; 4 year + AUR: E820388; 5 year + AUR: E820582				
MTBF	50,000 hours demonstrated				
Other Features	Serviceable internal components, Models with a stand for desktop application, Kensington lock				
What's in the box	I-Series, North America Power Cord, European Power Cord, Power Adapter - 180W, Cable RJ-50 to DB-9, Quick Installation Guide (QIG), Cable tie, VESA mounting screw, 75mm to 100mm adapter and mounting screw				

## Ordering Information

Part Number	Processor	OS	Memory	Storage	Surface Treatment
E605332	7305L	No OS	8GB	128GB	Clear
E605520	7305L	Window 10 2021 LTSC	8GB	128GB	Clear
E274321	7305L	ChromeOS Flex	8GB	128GB	Clear
E430821	i3-1215UL	Win 10 LTSC / Win 11 LTSC	8GB	256GB	Clear
E605919	i3-1215UL	No OS	8GB	128GB	Clear
E606120	i3-1215UL	Window 10 2021 LTSC	8GB	128GB	Clear
E274504	i3-1215UL	ChromeOS Flex	8GB	128GB	Clear
E980839	i3-1215UL	Window 10 2021 LTSC	8GB	256GB	Clear
E431006	i3-1215UL	Win 10 LTSC / Win 11 LTSC	8GB	256GB	Clear
E606323	i5-1245UL	No OS	8GB	128GB	Clear
E606511	i5-1245UL	Window 10 2021 LTSC	8GB	128GB	Clear
E274708	i5-1245UL	ChromeOS Flex	8GB	128GB	Clear
E836250	i5-1245UL	Window 10 2021 LTSC	16GB	256GB	Clear
E157906	i7-1265UL	Window 10 2021 LTSC	16GB	256GB	Clear
E164949	i7-1265UL	No OS	32GB	1TB	Clear

Elo reserves the right to change or update, without notice, any information contained herein; to change, without notice, the design, construction, materials, processing or specifications of any products; and to discontinue or limit production or distribution of any products. Elo and the Elo logo are either trademarks or registered trademarks of Elo Touch Solutions, Inc. All other trademarks are the property of their respective owners.  
© 2025 Elo Touch Solutions, Inc. All rights reserved. 25032AES00177



17-inch (5:4) I-Series 3 with Intel (With Stand)

Model	i2 Models	i3 Models	i5 Models	i7 Models
Enclosure Color	Black			
Display	17.0" / 431.8 mm diagonal, active matrix TFT LED LCD			
Aspect Ratio	5:4 (standard)			
Active Display Area (W x H)	13.3" x 10.64" / 337.9 mm x 270.3 mm			
Native (optimal) Resolution	1280 x 1024 @ 60Hz			
Touch Technologies	10-touch TouchPro® PCAP			
Colors	16.7M			
Brightness (typical)	LCD panel: 250 nits, TouchPro PCAP: 212.5 nits			
Response Time Total (typical)	25 msec			
Viewing Angle (typical)	Horizontal: 85°/85° or 170° total / Vertical: 80°/80° or 160° total			
Contrast Ratio (typical)	1000:1			
Processor	Intel Celeron Processor 7305L (8M Smart Cache, up to 1.10 GHz)	Intel Core i3-1215UL Processor (10M Smart Cache, up to 4.40 GHz by Intel Turbo Boost Technology 2.0)	Intel Core i5-1245UL Processor (12M Smart Cache, up to 4.40 GHz by Intel Turbo Boost Technology 2.0) with Intel vPro™ Support	Intel Core i7-1265UL Processor (12M Smart Cache, up to 4.80 GHz by Intel Turbo Boost Technology 2.0) with Intel vPro™ Support
Graphics	Intel UHD Graphics		Intel Iris Xe Graphics eligible: to use the Intel Iris Xe Graphics, the system must be populated with 128-bit (dual channel) memory.	
BIOS	AMI			
Memory (RAM)	8GB 4800MHz DDR5 SO-DIMM on 1 of 2 slots			16GB 4800MHz DDR5 SO-DIMM on 1 of 2 slots
	(Expandable to 64GB maximum <sup>1</sup> on 2 slots) <sup>2</sup>			
	<sup>1</sup> Maximum memory using 2 slots. Expandable up to 64GB maximum, SO-DIMM DDR5-4800. <sup>2</sup> Check brand of the memory included in your unit before purchasing the memory kit.			
Storage	128GB M.2 PCIe (NVMe) SSD, 80 TBW, 256GB M.2 PCIe (NVMe) SSD, 160 TBW GB equals one billion bytes when referring to storage capacity. Accessible capacity may be less.			
Operating Systems	No Operating System, Microsoft Windows 10 IoT Enterprise LTSC 64-bit			
I/O Ports	1x RJ45 LAN (Gigabit) Port, 4x USB 3.0 Ports, 4x Micro USB 2.0 Ports for Elo Edge Connect peripherals, 1x 24V Powered USB Port, 2x 12V Powered USB Ports, 1x RJ50 Powered Serial Port, 1x 12V/24V Cash Drawer Port (EPSON Pinout, 24V default; selectable by BIOS setting), 1x Full-function USB-C Port (Power up to 27W, USB 3.0, Display Port, Additional Video Out), 1x Audio Port (3.5 mm headset jack)			
Wireless Connectivity	802.11 a/b/g/n/ac/ax 2.4GHz, 5GHz and 6GHz, Bluetooth 5.3			
TPM	TPM 2.0			
RAID	Intel Volume Management Device (VMD) technology for select SKUs			
AMT	N/A		Intel Active Management Technology (AMT)	
Audio	2x 2W internal speakers			
Power	External 24VDC universal-type power supply brick, AC input voltage: 100-240 VAC, Input frequency: 50-60 Hz, Maximum output power: 180W			
Power Consumption	Without peripherals* - On Celeron: 33W, On i3: 47W, On i5: 50W, On i7: 54W, Sleep: < 5W, Off: < 0.5W *Condition for i7 models with 16GB DIMM/256GB SSD, others with 8GB DIMM/128GB SSD			
Dimensions	Unpackaged: 15.49" x 14.61" x 8.09" / 393.4 mm x 371.2 mm x 205.6 mm, Packaged: 20.8" x 21.2" x 12.4" / 529 mm x 539 mm x 315 mm			
Weight	Unpacked: 20.28 lbs / 9.2 kg, Packaged: 27.12 lbs / 12.3 kg			
Temperature	Operating: 0°C to 35°C / 32°F to 95°F, Storage: -20°C to 60°C / -4°F to 140°F Note: the thermal report pass airflow 0.5m/s condition. For No OS SKUs, recommend using the Elo optimize TDP tool for better performance.			
Humidity (non-condensing)	Operating: 20% to 80%; Storage: 5% to 95% (38.7°C max wet bulb temperature)			
Compliance	Energy Star 8.0 certified configurations available			
Regulatory approvals and declarations	Canada cUL, IC; United States UL, FCC; Germany TUV; Europe CE; Australia RCM; United Kingdom UKCA; International CB; Argentina S-Mark; Brazil ANATEL; Japan VCCI, MIC; China CCC, SRRC; Mexico NOM; RoHS CoC; New Zealand R-NZ			
Mounting Options	100mm VESA mount			
Real-Time Clock	Replaceable CR2450 lithium metal battery for clock			
Warranty	3-year			
Extended Warranties	4 year: E819598; 5 year: E819795; 3 year + AUR: E820186; 4 year + AUR: E820388; 5 year + AUR: E820582			
MTBF	50,000 hours demonstrated			
Other Features	Serviceable internal components, Models with a stand for desktop application, Kensington lock			
What's in the box	I-Series with stand, North America Power Cord, European Power Cord, Power Adapter - 180W, Cable RJ-50 to DB-9, Quick Installation Guide (QIG), Cable tie, CFD mounting screw, VESA mounting screw, VESA cover and mounting screw			

Ordering Information

Part Number	Processor	OS	Memory	Storage	Surface Treatment
E708361	7305L	No OS	8GB	128GB	Anti-glare
E708554	7305L	Window 10 2021 LTSC	8GB	128GB	Anti-glare
E708749	i3-1215UL	No OS	8GB	128GB	Anti-glare
E708953	i3-1215UL	Window 10 2021 LTSC	8GB	128GB	Anti-glare
E709150	i5-1245UL	No OS	8GB	128GB	Anti-glare
E709349	i5-1245UL	Window 10 2021 LTSC	8GB	128GB	Anti-glare
E709537	i7-1265UL	No OS	16GB	256GB	Anti-glare
E709726	i7-1265UL	Window 10 2021 LTSC	16GB	256GB	Anti-glare



## 22-inch (16:9) I-Series 3 with Intel (With Stand)

Model	i2 Models		i3 Models	i5 Models	i7 Models
Enclosure Color	Black				
Display	21.5" / 546.1 mm diagonal, active matrix TFT LED LCD				
Aspect Ratio	16:9 (standard)				
Active Display Area (W x H)	18.74" x 10.54" / 476.1 mm x 267.8 mm				
Native (optimal) Resolution	1920 x 1080 @ 60Hz				
Touch Technologies	10-touch TouchPro® PCAP				
Colors	16.7M				
Brightness (typical)	LCD panel: 250 nits, TouchPro PCAP: 212.5 nits				
Response Time Total (typical)	14 msec				
Viewing Angle (typical)	Horizontal: 89°/89° or 178° total / Vertical: 89°/89° or 178° total				
Contrast Ratio (typical)	1000:1				
Processor	Intel Celeron Processor 7305L (8M Smart Cache, up to 1.10 GHz)	Intel Core i3-1215UL Processor (10M Smart Cache, up to 4.40 GHz by Intel Turbo Boost Technology 2.0)		Intel Core i5-1245UL Processor (12M Smart Cache, up to 4.40 GHz by Intel Turbo Boost Technology 2.0) with Intel vPro™ Support	Intel Core i7-1265UL Processor (12M Smart Cache, up to 4.80 GHz by Intel Turbo Boost Technology 2.0) with Intel vPro™ Support
Graphics	Intel UHD Graphics			Intel Iris Xe Graphics eligible: to use the Intel Iris Xe Graphics, the system must be populated with 128-bit (dual channel) memory.	
BIOS	AMI				
Memory (RAM)	8GB 4800MHz DDR5 SO-DIMM on 1 of 2 slots				16GB 4800MHz DDR5 SO-DIMM on 1 of 2 slots
	(Expandable to 64GB maximum <sup>1</sup> on 2 slots) <sup>2</sup>				
	<sup>1</sup> Maximum memory using 2 slots. Expandable up to 64GB maximum, SO-DIMM DDR5-4800. <sup>2</sup> Check brand of the memory included in your unit before purchasing the memory kit.				
Storage	128GB M.2 PCIe (NVMe) SSD, 80 TBW, 256GB M.2 PCIe (NVMe) SSD, 160 TBW GB equals one billion bytes when referring to storage capacity. Accessible capacity may be less.				
Operating Systems	No Operating System, Microsoft Windows 10 IoT Enterprise LTSC 64-bit				
I/O Ports	1x RJ45 LAN (Gigabit) Port, 4x USB 3.0 Ports, 4x Micro USB 2.0 Ports for Elo Edge Connect peripherals, 1x 24V Powered USB Port, 2x 12V Powered USB Ports, 1x RJ50 Powered Serial Port, 1x 12V/24V Cash Drawer Port (EPSON Pinout, 24V default; selectable by BIOS setting), 1x Full-function USB-C Port (Power up to 27W, USB 3.0, Display Port, Additional Video Out), 1x Audio Port (3.5 mm headset jack)				
Wireless Connectivity	802.11 a/b/g/n/ac/ax 2.4GHz, 5GHz and 6GHz, Bluetooth 5.3				
TPM	TPM 2.0				
RAID	Intel Volume Management Device (VMD) technology for select SKUs				
AMT	N/A			Intel Active Management Technology (AMT)	
Audio	2x 2W internal speakers				
Power	External 24VDC universal-type power supply brick, AC input voltage: 100-240 VAC, Input frequency: 50-60 Hz, Maximum output power: 180W				
Power Consumption	Without peripherals* - On Celeron: 39W, On i3: 51W, On i5: 57W, On i7: 56W, Sleep: < 5W, Off: < 0.5W *Condition for i5 & i7 models with 16GB DIMM/256GB SSD, others with 8GB DIMM/128GB SSD				
Dimensions	Unpackaged: 20.70" x 14.52" x 8.06" / 525.8 mm x 368.7 mm x 204.6 mm, Packaged: 25.4" x 19.8" x 12.4" / 645 mm x 503 mm x 316 mm				
Weight	Unpacked: 22.09 lbs / 10.02 kg, Packaged: 29.19 lbs / 13.24 kg				
Temperature	Operating: 0°C to 35°C / 32°F to 95°F, Storage: -20°C to 60°C / -4°F to 140°F Note: the thermal report pass airflow 0.5m/s condition. For No OS SKUs, recommend using the Elo optimize TDP tool for better performance.				
Humidity (non-condensing)	Operating: 20% to 80%; Storage: 5% to 95% (38.7°C max wet bulb temperature)				
Compliance	Energy Star 8.0 certified configurations available				
Regulatory approvals and declarations	Canada cUL, IC; United States UL, FCC; Germany TUV; Europe CE; Australia RCM; United Kingdom UKCA; International CB; Argentina S-Mark; Brazil ANATEL; Japan VCCI, MIC; China CCC, SRRC; Mexico NOM; RoHS CoC; New Zealand R-NZ				
Mounting Options	100mm VESA mount				
Real-Time Clock	Replaceable CR2450 lithium metal battery for clock				
Warranty	3-year				
Extended Warranties	4 year: E819598; 5 year: E819795; 3 year + AUR: E820186; 4 year + AUR: E820388; 5 year + AUR: E820582				
MTBF	50,000 hours demonstrated				
Other Features	Serviceable internal components, Models with a stand for desktop application, Kensington lock				
What's in the box	I-Series with stand, North America Power Cord, European Power Cord, Power Adapter - 180W, Cable RJ-50 to DB-9, Quick Installation Guide (QIG), Cable tie, CFD mounting screw, VESA mounting screw, VESA cover and mounting screw				

## Ordering Information

Part Number	Processor	OS	Memory	Storage	Surface Treatment
E706811	7305L	No OS	8GB	128GB	Anti-glare
E707003	7305L	Window 10 2021 LTSC	8GB	128GB	Anti-glare
E707193	i3-1215UL	No OS	8GB	128GB	Anti-glare
E707378	i3-1215UL	Window 10 2021 LTSC	8GB	128GB	Anti-glare
E707579	i5-1245UL	No OS	8GB	128GB	Anti-glare
E707769	i5-1245UL	Window 10 2021 LTSC	8GB	128GB	Anti-glare
E155493	i5-1245UL	No OS	16GB	256GB	Anti-glare
E155309	i5-1245UL	Window 10 2021 LTSC	16GB	256GB	Anti-glare
E457084	i5-1245UL	No OS	16GB	256GB	Anti-glare
E457278	i5-1245UL	Window 10 2021 LTSC	16GB	256GB	Anti-glare
E707974	i7-1265UL	No OS	16GB	256GB	Anti-glare
E708162	i7-1265UL	Window 10 2021 LTSC	16GB	256GB	Anti-glare

## 22-inch (16:9) I-Series 3 with Intel (Without Stand)

Model	i2 Models		i3 Models	i5 Models	i7 Models
Enclosure Color	Black				
Display	21.5" / 546.1 mm diagonal, active matrix TFT LED LCD				
Aspect Ratio	16:9 (standard)				
Active Display Area (W x H)	18.74" x 10.54" / 476.1 mm x 267.8 mm				
Native (optimal) Resolution	1920 x 1080 @ 60Hz				
Touch Technologies	10-touch TouchPro® PCAP				
Colors	16.7M				
Brightness (typical)	LCD panel: 250 nits, TouchPro PCAP: 212.5 nits				
Response Time Total (typical)	14 msec				
Viewing Angle (typical)	Horizontal: 89°/89° or 178° total / Vertical: 89°/89° or 178° total				
Contrast Ratio (typical)	1000:1				
Processor	Intel Celeron Processor 7305L (8M Smart Cache, up to 1.10 GHz)	Intel Core i3-1215UL Processor (10M Smart Cache, up to 4.40 GHz by Intel Turbo Boost Technology 2.0)	Intel Core i5-1245UL Processor (12M Smart Cache, up to 4.40 GHz by Intel Turbo Boost Technology 2.0) with Intel vPro™ Support	Intel Core i7-1265UL Processor (12M Smart Cache, up to 4.80 GHz by Intel Turbo Boost Technology 2.0) with Intel vPro™ Support	
Graphics	Intel UHD Graphics		Intel Iris Xe Graphics eligible: to use the Intel Iris Xe Graphics, the system must be populated with 128-bit (dual channel) memory.		
BIOS	AMI				
Memory (RAM)	8GB 4800MHz DDR5 SO-DIMM on 1 of 2 slots				16GB 4800MHz DDR5 SO-DIMM on 1 of 2 slots
	(Expandable to 64GB maximum <sup>1</sup> on 2 slots) <sup>2</sup>				
	<sup>1</sup> Maximum memory using 2 slots. Expandable up to 64GB maximum, SO-DIMM DDR5-4800. <sup>2</sup> Check brand of the memory included in your unit before purchasing the memory kit.				
Storage	128GB M.2 PCIe (NVMe) SSD, 80 TBW, 256GB M.2 PCIe (NVMe) SSD, 160 TBW GB equals one billion bytes when referring to storage capacity. Accessible capacity may be less.				
Operating Systems	No Operating System, Microsoft Windows 10 IoT Enterprise LTSC 64-bit, Windows 11 Professional 64-bit, ChromeOS Flex				
I/O Ports	1x RJ45 LAN (Gigabit) Port, 4x USB 3.0 Ports, 4x Micro USB 2.0 Ports for Elo Edge Connect peripherals, 1x RJ50 Powered Serial Port, 1x Full-function USB-C Port (Power up to 27W, USB 3.0, Display Port, Additional Video Out), 1x Audio Port (3.5 mm headset jack)				
Wireless Connectivity	802.11 a/b/g/n/ac/ax 2.4GHz, 5GHz and 6GHz, Bluetooth 5.3				
TPM	TPM 2.0				
RAID	Intel Volume Management Device (VMD) technology for select SKUs				
AMT	N/A			Intel Active Management Technology (AMT)	
Audio	2x 2W internal speakers				
Power	External 24VDC universal-type power supply brick, AC input voltage: 100-240 VAC, Input frequency: 50-60 Hz, Maximum output power: 180W				
Power Consumption	Without peripherals* - On Celeron: 39W, On i3: 51W, On i5: 57W, On i7: 56W, Sleep: < 5W, Off: < 0.5W *Condition for i5 & i7 models with 16GB DIMM/256GB SSD, others with 8GB DIMM/128GB SSD				
Dimensions	Unpackaged: 20.70" x 12.64" x 1.56" / 525.8 mm x 321.1 mm x 39.6 mm, Packaged: 25.3" x 8.4" x 17.3" / 643 mm x 214 mm x 439 mm				
Weight	Unpacked: 13.23 lbs / 6 kg, Packaged: 19 lbs / 8.62 kg				
Temperature	Operating: 0°C to 35°C / 32°F to 95°F, Storage: -20°C to 60°C / -4°F to 140°F Note: the thermal report pass airflow 0.5m/s condition. For No OS SKUs, recommend using the Elo optimize TDP tool for better performance.				
Humidity (non-condensing)	Operating: 20% to 80%; Storage: 5% to 95% (38.7°C max wet bulb temperature)				
Compliance	Energy Star 8.0 certified configurations available				
Regulatory approvals and declarations	Canada cUL, IC; United States UL, FCC; Germany TUV; Europe CE; Australia RCM; United Kingdom UKCA; International CB; Argentina S-Mark; Brazil ANATEL; Japan VCCI, MIC; China CCC, SRRC; Mexico NOM; RoHS CoC; New Zealand R-NZ				
Mounting Options	100mm VESA mount				
Real-Time Clock	Replaceable CR2450 lithium metal battery for clock				
Warranty	3-year				
Extended Warranties	4 year: E819598; 5 year: E819795; 3 year + AUR: E820186; 4 year + AUR: E820388; 5 year + AUR: E820582				
MTBF	50,000 hours demonstrated				
Other Features	Serviceable internal components, Models with a stand for desktop application, Kensington lock				
What's in the box	I-Series, North America Power Cord, European Power Cord, Power Adapter - 180W, Cable RJ-50 to DB-9, Quick Installation Guide (QIG), Cable tie, VESA mounting screw				

## Ordering Information

Part Number	Processor	OS	Memory	Storage	Surface Treatment
E606708	7305L	No OS	8GB	128GB	Clear
E606903	7305L	Window 10 2021 LTSC	8GB	128GB	Clear
E274899	7305L	ChromeOS Flex	8GB	128GB	Clear
E607093	i3-1215UL	No OS	8GB	128GB	Clear
E607299	i3-1215UL	Window 10 2021 LTSC	8GB	128GB	Clear
E275103	i3-1215UL	ChromeOS Flex	8GB	128GB	Clear
E432006	i3-1215UL	Win 10 LTSC / Win 11 LTSC	8GB	256GB	Clear
E607503	i5-1245UL	No OS	8GB	128GB	Clear
E607709	i5-1245UL	Window 10 2021 LTSC	8GB	128GB	Clear
E275288	i5-1245UL	ChromeOS Flex	8GB	128GB	Clear
E165135	i7-1265UL	No OS	32GB	1TB	Clear

## 24-inch (16:9) I-Series 3 with Intel (Without Stand)

Model	i2 Models		i3 Models	i5 Models	
Enclosure Color	Black				
Display	23.8" / 604.52 mm diagonal, active matrix TFT LED LCD				
Aspect Ratio	16:9 (standard)				
Active Display Area (W x H)	20.75" x 11.67" / 527.04 mm x 296.46 mm				
Native (optimal) Resolution	1920 x 1080 @ 60Hz				
Touch Technologies	10-touch TouchPro® PCAP				
Colors	16.7M				
Brightness (typical)	LCD panel: 250 nits, TouchPro PCAP: 212.5 nits				
Response Time Total (typical)	16 msec				
Viewing Angle (typical)	Horizontal: 89°/89° or 178° total / Vertical: 89°/89° or 178° total				
Contrast Ratio (typical)	1000:1				
Processor	Intel Celeron Processor 7305L (8M Smart Cache, up to 1.10 GHz)	Intel Core i3-1215UL Processor (10M Smart Cache, up to 4.40 GHz by Intel Turbo Boost Technology 2.0)	Intel Core i5-1245UL Processor (12M Smart Cache, up to 4.40 GHz by Intel Turbo Boost Technology 2.0) with Intel vPro™ Support	Intel Core i7-1265UL Processor (12M Smart Cache, up to 4.80 GHz by Intel Turbo Boost Technology 2.0) with Intel vPro™ Support	
Graphics	Intel UHD Graphics		Intel Iris Xe Graphics eligible: to use the Intel Iris Xe Graphics, the system must be populated with 128-bit (dual channel) memory.		
BIOS	AMI				
Memory (RAM)	8GB 4800MHz DDR5 SO-DIMM on 1 of 2 slots (Expandable to 64GB maximum¹ on 2 slots)²			16GB 4800MHz DDR5 SO-DIMM on 1 of 2 slots	
	¹ Maximum memory using 2 slots. Expandable up to 64GB maximum, SO-DIMM DDR5-4800.				
	² Check brand of the memory included in your unit before purchasing the memory kit.				
Storage	128GB M.2 PCIe (NVMe) SSD, 80 TBW, 256GB M.2 PCIe (NVMe) SSD, 160 TBW GB equals one billion bytes when referring to storage capacity. Accessible capacity may be less.				
Operating Systems	No Operating System, Microsoft Windows 10 IoT Enterprise LTSC 64-bit, ChromeOS Flex				
I/O Ports	1x RJ45 LAN (Gigabit) Port, 4x USB 3.0 Ports, 4x Micro USB 2.0 Ports for Elo Edge Connect peripherals, 1x RJ50 Powered Serial Port, 1x Full-function USB-C Port (Power up to 27W, USB 3.0, Display Port, Additional Video Out), 1x Audio Port (3.5 mm headset jack)				
Wireless Connectivity	802.11 a/b/g/n/ac/ax 2.4GHz, 5GHz and 6GHz, Bluetooth 5.3				
TPM	TPM 2.0				
RAID	Intel Volume Management Device (VMD) technology for select SKUs				
AMT	N/A		Intel Active Management Technology (AMT)		
Audio	2x 2W internal speakers				
Power	External 24VDC universal-type power supply brick, AC input voltage: 100-240 VAC, Input frequency: 50-60 Hz, Maximum output power: 180W				
Power Consumption	Without peripherals* - On Celeron: 40W, On i3: 52W, On i5: 56W, Sleep: < 5W, Off: < 0.5W *Condition for i7 models with 16GB DIMM/256GB SSD, others with 8GB DIMM/128GB SSD				
Dimensions	Unpackaged: 22.49" x 13.86" x 1.54" / 571.2 mm x 352.0 mm x 39.0 mm, Packaged: 27.4" x 20.8" x 7.4" / 697 mm x 529 mm x 188 mm				
Weight	Unpacked: 15.65 lbs / 7.1 kg, Packaged: 21.38 lbs / 9.7 kg				
Temperature	Operating: 0°C to 35°C / 32°F to 95°F, Storage: -20°C to 60°C / -4°F to 140°F Note: the thermal report pass airflow 0.5m/s condition. For No OS SKUs, recommend using the Elo optimize TDP tool for better performance.				
Humidity (non-condensing)	Operating: 20% to 80%; Storage: 5% to 95% (38.7°C max wet bulb temperature)				
Compliance	Energy Star 8.0 certified configurations available				
Regulatory approvals and declarations	Canada cUL, IC; United States UL, FCC; Germany TUV; Europe CE; Australia RCM; United Kingdom UKCA; International CB; Argentina S-Mark; Brazil ANATEL; Japan VCCI, MIC; China CCC, SRRC; Mexico NOM; RoHS CoC; New Zealand R-NZ				
Mounting Options	100mm VESA mount				
Real-Time Clock	Replaceable CR2450 lithium metal battery for clock				
Warranty	3-year				
Extended Warranties	4 year: E819598; 5 year: E819795; 3 year + AUR: E820186; 4 year + AUR: E820388; 5 year + AUR: E820582				
MTBF	50,000 hours demonstrated				
Other Features	Serviceable internal components, Models with a stand for desktop application, Kensington lock				
What's in the box	I-Series, NA Power Cord, EU Power Cord, Power Adapter - 180W, Cable RJ-50 to DB-9, Quick Installation Guide (QIG), Cable tie, VESA mounting screw				

## Ordering Information

Part Number	Processor	OS	Memory	Storage	Surface Treatment
E607901	7305L	No OS	8GB	128GB	Clear
E608084	7305L	Window 10 2021 LTSC	8GB	128GB	Clear
E275486	7305L	ChromeOS Flex	8GB	128GB	Clear
E608275	i3-1215UL	No OS	8GB	128GB	Clear
E608462	i3-1215UL	Window 10 2021 LTSC	8GB	128GB	Clear
E275675	i3-1215UL	ChromeOS Flex	8GB	128GB	Clear
E608662	i5-1245UL	No OS	8GB	128GB	Clear
E608847	i5-1245UL	Window 10 2021 LTSC	8GB	128GB	Clear
E275889	i5-1245UL	ChromeOS Flex	8GB	128GB	Clear
E156961	i5-1245UL	No OS	16GB	256GB	Clear
E157163	i5-1245UL	Window 10 2021 LTSC	16GB	256GB	Clear
E165341	i7-1265UL	No OS	32GB	1TB	Clear

Learn more about Elo at [EloTouch.com](https://www.elotouch.com).

### Americas

Tel +1 408 597 8000  
elosales.na@elotouch.com

### Europe (EMEA)

Tel +32 (0)16 70 45 00  
EMEA.Sales@elotouch.com

### Asia Pacific

Tel +86 (21) 3329 1385  
www.elotouch.com.cn

Elo reserves the right to change or update, without notice, any information contained herein; to change, without notice, the design, construction, materials, processing or specifications of any products; and to discontinue or limit production or distribution of any products. Elo and the Elo logo are either trademarks or registered trademarks of Elo Touch Solutions, Inc. All other trademarks are the property of their respective owners.  
© 2025 Elo Touch Solutions, Inc. All rights reserved. 25032AES00177

