

WEARABLE SCANNERS



HandScanner

- Improves productivity saving 4 seconds per scan
- Improves accuracy: up to 33% less errors
- Improves worker ergonomics: weight savings of up to 1.5 tons per shift
- Best performance: megapixel resolution and ability to capture 1D/2D barcodes
- Premium solution compared to a ring scanner: fingers are free to grab items and use tools and device is less exposed to impacts

INDUSTRIAL HANDHELD SCANNERS



PowerScan 9100

- Datalogic's linear imaging technology for 1D bar code labels
- Green scanning line with the same definition of a Laser beam
- Outstanding decoding capability on damaged and poor printed barcodes
- Bluetooth and Datalogic proprietary STAR Radio with display and keypad options
- Balanced ergonomics and built to last with its 10 million hits trigger



PowerScan 9500

- Omnidirectional reading on 1D, 2D, Stacked and Postal Codes
- Standard-range and long-range scanning capabilities
- Bluetooth and proprietary Datalogic STAR Radio system with display and keypad options
- Multiple connectivity including Ethernet and Industrial Ethernet
- Specific models for Direct Part Mark codes
- Superior Good Read feedbacks with 3GL technology and Green Spot



PowerScan 9600

- Snappy omnidirectional reading on 1D, stacked and 2D codes, postal codes
- Standard Range, High Performance and Document Capture models
- Wireless Charging reducing total cost of ownership
- Water and Particulate Sealing Rating: IP65 and IP67; Cradle IP65; 10 million hits trigger
- Center of gravity design
- Modular cradle design allowing interface expansion
- White light illumination
- High visibility OLED Display with 4-Keys /16-Keys keypad options
- Datalogic's 3GL™ (3 Green Lights) technology and loud beeper for good-read feedback

Retail Portfolio & Barcode Testing Chart

POCKET GUIDE



GENERAL PURPOSE HANDHELD SCANNERS



Gryphon 4200

- Unique 'soft line viewfinder' to easily target the code
- Bluetooth™ wireless or Datalogic's STAR
- Wireless battery charging system
- Disinfectant Ready enclosures



Gryphon 4500

- 1 MP optics for enhanced scanning & superior DOF
- Omnidirectional reading of 1D/2D codes
- Bluetooth™ wireless or Datalogic's STAR Cordless System™
- Wireless battery charging system
- Disinfectant Ready enclosures



QuickScan 2100

- Extra-wide scan angle and extra-long scan line
- Choice of Bluetooth wireless technology or Datalogic STAR Cordless System (radio frequency available in 433 MHz)
- Compatible with Android™ and iOS devices through the Bluetooth HID profile
- Easy, tool-free, user-replaceable, long-lasting lithium-ion battery



QuickScan 2500

- 1 MP optics for superior scanning and DOF
- Unique technology LED-based extreme precision aiming system
- Motionix™ patented motion-sensing technology for seamless reading mode transitions
- Multi-interface includes the latest USB-C



QuickScan 2200

- Light weight and balanced design
- Extra-wide scan angle and extra-long scan line
- Extended reading range and depth-of-field (DOF)
- Sharp and highly visible scan line
- Datalogic's distinctive 'Green Spot' technology for superior good-read feedback
- Intrinsic Trigger Robustness by Design
- USB interface, includes the latest USB-C standard
- Wide choice of stands and accessories



Heron

- Outstanding reading performance on 1D, 2D, postal codes, stacked and composite codes
- Innovative and unique design raises the bar for a cutting-edge POS check-out experience
- Multiple changing color LEDs on sides and top
- Automatic switching between handheld and hands-free operations
- Efficient illumination and aiming system



RIDA

- Small, ergonomic, perfectly hand-fitted
- Innovative, unique and compact design for a new and modern operator's experience
- Compatible with Android, Apple iOS and Windows Mobile devices
- Vibration and good read feedback

SELF-SHOPPING



Joya Touch 22

- Powerful Octa-Core Qualcomm platform SDA660 with 4GB RAM and 32GB FLASH
- Android™ operating system running Google Mobile Services (GMS)
- Unique wireless charging technology in the self-shopping market
- Available in standard or personalized colors and in two form factors: pistol grip and handheld



Memor 11

- Ultra-Ergonomic, compact and robust
- 5 inch brilliant capacitive multi-touch HD display
- Validated by Google as 'Android Enterprise Recommended' for rugged devices
- Wireless charging increases reliability dramatically by eliminating contacts on both the device and docks
- Ruggedized with drop resistance to 1.5 m / 5 ft to concrete and IP65 sealing
- Full suite of cellular connectivity for voice and data, featuring LTE-Advanced/4G+



Memor K

- Ergonomic, light weight and pocketable size to read 1D/2D codes in any direction and on any surface, including mobile screens
- Easy-swappable battery for a quick replacement
- Enhanced productivity all over the store: run simultaneous applications smoothly



Skorpio X5

- Largest 4.3" high visibility display in its class
- High performance octa-core 2.2 GHz Qualcomm processor up to 4 GB RAM
- Handheld and Pistol-grip form with 3 keyboard layouts
- Fully rugged 1.8 m drop and IP65 rating
- Choice between Wireless Charging or Wired versions with dedicated docks
- Scan engine: 1D Imager, 2D Imager Standard Range, Mid-Range and near/far Extra-Long-Range Imager

VEHICLE MOUNT COMPUTERS



Rhino and SH15/SH21

- 10 ,12, 15, 21 inch-high resolution color display
- Operating System: Windows 7 Emb, Windows 10 IoT or Android 7.1
- Capacitive multi-touch screen with gloves support
- Wide operating temperature range from -20 to 55 °C / -4 to 131 °F (Freezer model from -30 °C / -22 °F)

SD9030 DONGLE

- Reduced dimensions and universal bracket for easy installation
- Datalogic's STAR Cordless System™ 2.0 Proprietary Narrow Band Radio
- Compatible with all PowerScan PM9XXX products
- RGB LED and 'Find Me' button

MULTI - PLANE IMAGING SCANNERS/SCALE



Magellan 9600i /9900i

- Magellan 9600i and 9900i bring fresh styling and all the great features of previous multi-plane scanners plus even more
- Both feature Powerful QuadVision technology that improves performance by 10% over competitors
- Both models set new standards for 2D barcode read rate to future proof the scanner for GS1 Digital Link
- Both offer new options that enable Artificial Intelligence (AI) at the check-out which will help customers implement new solutions to reduce shrink and improve customer experience
- Magellan™ 9900i offer a 30% smaller bonnet for less footprint above the counter plus an optional Top Down Reader creating a 6th sided view to improve scan capability



Magellan 9800i

- Seamless reading of 1D/2D codes in all planes with good-read audio and visual confirmation for fast, uninterrupted scanning
- Optional Top-Down Reader (TDR) adds large topside field-of-view
- All-Weights™ scale platter enables effortless, accurate weighing of long or bulky items
- ScaleSentry™ Shrink Monitoring/Prevention System technology reduces losses from oversized items
- Low bonnet height allows for accessibility in checkstand layout
- Optional Digimarc® Barcode reading
- Optional Top Down imager (TDi) to enable Machine Learning functionality for produce identification
- Available with ScanSentry, reduces shrink by detecting when items are passed over the scanner, but not scanned



Magellan 9300i/9400i

- Available with a dedicated Magellan Customer Service Scanner (CSS) with flexible mounting for reading cell phones, coupons and loyalty cards
- Magellan 9300i/9400i bi-optic form factor is compatible with traditional checkstands and scanning techniques
- Available with factory installed scales in pre-verified and on-site certifiable versions and models for integration with local scale manufacturer solutions
- Available with ScanSentry. Detects when an object enters and leaves the scan volume, reduces shrink by detecting when items are passed over the scanner, but not scanned

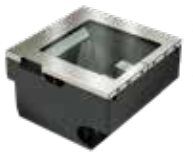
www.datalogic.com

SINGLE PLANE SCANNERS



Magellan 34xx VSi

- On-counter high performance barcode reader
- Advanced digital imaging provides class-leading performance and reliability
- Seamless 1D, 2D and Digimarc® digital watermark reading
- Smoothly reads all barcodes, whether displayed on cell phones or printed
- Subtle, adaptive illumination for user comfort
- Large, intuitive field of view for easy scanning



Magellan 35xx HSi

- In-counter high performance barcode reader
- Advanced digital imaging provides class-leading performance and reliability
- Seamless 1D, 2D and Digimarc® digital watermark reading
- Smoothly reads all bar codes, whether displayed on cell phones or printed
- Subtle, adaptive illumination for user comfort
- Premium all Stainless Steel and Sapphire glass design removes clutter at the POS
- Superior slide-scanning ergonomics to minimize item handling and lifting



Magellan 1500i

- Advanced digital imaging provides class-leading performance and reliability
- Seamlessly reads 1D and 2D barcodes, whether printed or displayed on mobile phones, laptop or tablets
- Compact, ergonomic design for hands-free or handheld operations



Gryphon I GPS4400 2D

- Digital imaging provides performance and reliability
- Easily read 1D and 2D barcodes with Greenspot™ Good read confirmation
- Optional tilting stand provides hands-free operation and an ergonomic scan area

1D CODES

Code 93 13mils



2165144

Codabar 13mils



9847516

Plessey 8mils



12345678

UPC-A 13mils



0 1 4 1 4 9 9 2 9 9 6 2

Interleaved 2 of 5 13mils



3571297342

GS1 Databar (RSS) 13 mils



(01) 0 0000123 00001 7

EAN8 13mils



2 1 2 3 4 5 6 9

UPC-E 13mils



0 4 0 2 9 3 1 1

Standard 2 of 5 13mils



65791813

EAN13 13mils



6 4 5 6 8 1 3 4 7 2 3 4 5

1D CODES

LONG CODES

ISSN 13mils



ISSN 977-832-26-1345-1

9 7 7 8 3 2 2 6 1 3 4 5 1

Code 128 10mils



2112345678917

Code 39 - Full ASCII 10mils



123abc

GS1-128 13mils



24561239

Code 32 13mils



A056742113

Code 128 10mils (35 Digits)



95158975215978415159875314097845345

ISBN 13mils



ISBN 979-923-45-6421-6

9 7 9 9 2 3 4 5 6 4 2 1 1

MSI Plessey 10mils



161499967

Code 39 - Regular 13mils



121654

2D CODES

QR Code 15mils



QR Code 5mils



Data Matrix 55mils



Aztec Code 15mils



EAN • UCC Composite



Micro QR 15mils



Data Matrix 15mils



Data Matrix 100mils



Han Xin Code 15mils



Maxicode



QR Code 3mils



PDF417 10mils



LOW CONTRAST CODES

DAMAGED CODES

EAN13 13mils (60% PCS)



0 8 5 6 8 1 3 4 7 2 3 6 3

QR Code 15mils (40% PCS)



EAN13 13mils (30% PCS)



0 8 5 6 8 1 3 4 7 2 3 6 3

QR Code 15mils (25% PCS)



EAN13 13mils (20% PCS)



0 8 5 6 8 1 3 4 7 2 3 6 3

Code 128 13mils



Code 128 13 mils



Code 128 13mils



QR Code



12345678

Code 128



24 1 8 5 7 2 9 0 0 6 0 0 0 8

QR Code



Data Matrix



QR Code



Data Matrix



Data Matrix




LARGE CAPACITY CODES

INVERSE COLOR CODES

HIGH DENSITY CODES


QR Code 15mils



Code 128 13mils



EAN8 13mils



2 1 2 3 4 5 6 9

Code 39 5mils




8 5 6 8 1 3 4 7 2 3 6

PDF417 5mils




Data Matrix



QR Code 15mils



Code 128 3mils



6541

Data Matrix 5mils

