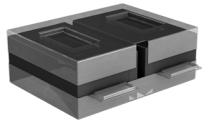
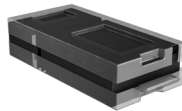


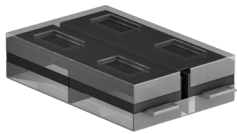
SmartZone™ UPS Replacement Batteries & Accessories



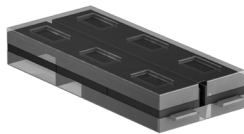
UVC024



UVC036



UVC048



UVC072



UVD024



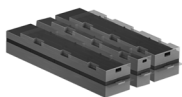
UVD036



UVD048



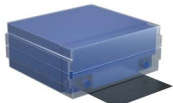
UVD072



UVD240



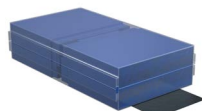
UVD480



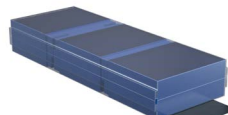
ULC024



ULC048



ULC272



ULC372

Part Numbers	Description
UVC024	24 V Replacement VRLA battery cartridge for 1kVA UPS only
UVC036	36 V Replacement VRLA battery cartridge for 1kVA UPS only
UVC048	48 V Replacement VRLA battery cartridge for 2kVA UPS only
UVC072	Replacement VRLA battery cartridge for 3kVA UPS only
UVD024	24 V Replacement VRLA battery cartridge set for 1kVA 24Vdc UPS EBP (2 × 24 V battery cartridges)
UVD036	36 V Replacement VRLA battery cartridge set for 1kVA 36Vdc UPS EBP (2 × 36 V battery cartridges)
UVD048	48 V Replacement VRLA battery cartridge set for 2kVA 48Vdc UPS EBP (2 × 48 V battery cartridges)
UVD072	72 V Replacement VRLA battery cartridge set for 3kVA 72Vdc UPS EBP (2 × 72 V battery cartridges)
UVD240	240 V Replacement VRLA battery cartridge set for 5-10kVA UPS EBP (2 × 8-battery and 1 × 4-battery cartridges)
UVD480	480 V Replacement VRLA battery cartridge set for 3phase UPS EBP (4 × battery cartridges)
ULC024	24 V LFP 1kVA Lithium Replacement Battery Cartridge
ULC048	48 V LFP 1.5kVA Lithium Replacement Battery Cartridge
ULC272	72 V 6Ah LFP 2kVA Lithium Replacement Battery Cartridge
ULC372	72 V 9Ah LFP 3kVA Lithium Replacement Battery Cartridge



URC005



UNCP01



UTOWFT



URMKIT2



UMB20K



URM480



SRM19CM3

Part Numbers	Description
URC005	Relay card (MiniAS400) (12 V) (for 1 to 10kVA single phase UPS units)
UNCP01	Intelligent Network Management Card (iNMC). See iNMC specs for more details.
UTOWFT	Tower stabilizer brackets
URMKIT2	Rack mount rail kit for 1-3kVA and 5-10kVA UPS and EBP
UMB20K	SmartZone™ PDU (Maintenance Bypass Switch) (17.3 in. × 25.98 in. × 5.1 in.) (440mm × 660mm × 131mm) (15kg)
URM480	Rack mount rail kit for External Battery Pack 480 V chassis
SRM19CM3	2-post Rack Mount Cantilevered Shelf. The two-piece shelf mounts to the front and back of 2-post EIA racks.